



Introducing Signare

Signare is a vibrant British lifestyle brand. We design, manufacture and distribute stylish fashion bags and home furnishings featuring distinctly individual patterns.

The value of the brand is in the creation of Signare design artworks. Every Signare product has its own personality and a story to tell. Many of our designs are inspired by great art, and in our collection, you'll find iconic works – some of them licensed from world-renowned museums and heritage organisations.

Signare designs include:

- Great Masterpieces such as the *Mona Lisa*, *Starry Night*, *Poppy Field* and *Tree of Life*.
- Works by famous designers including William Morris, Rennie Mackintosh and Charles Voysey.
- Patterns celebrating the lives and achievements of great figures from world history, including Jane Austen and William Shakespeare.
- Designs that reflect the colour and variety of life itself, from garden wildlife to cute cats and adorable dogs, from historical landmarks to geometric patterns.

We've taken the ancient art of tapestry and given it a modern twist; every Signare design is reproduced in exquisite woven detail.

Our product distribution channels encompass a wide range of retail sectors, from department stores to museum gift shops, garden centres to heritage attractions, fashion boutiques to furniture and interior design stores – and more.

Our mission is to bring happiness and fun into the lives of our customers. Signare products make perfect personal treats or great gifts for special friends or family.

At Signare, we aim to deliver a healthy profit to our retail partners by providing our unique products at highly competitive trade prices. We're committed to continually supplying high quality, fresh, creative new products to the market, and to provide industry-leading customer service at all times.

Tapestry Cushions

A decorative cushion cover that is sure to liven up any room in your house.

Signare's seamless cushions come in a wide variety of styles from William Morris to gorgeous floral patterns and adorable animals. Our panel art cushions feature masterpieces from famous artists such as Vincent van Gogh and Leonardo da Vinci.

- The unique cushion covers have a double-sided tapestry pattern with a piped edge.
- A concealed zip on one end allows the inner cushion to be removed for washing or replacement.
- Fabric Composition for Seamless Cushion: 100% Polyester
- Fabric Composition for Panel Art Cushion: 55% Cotton; 45% Polyester



Tapestry Wall Hangings

Bring a masterpiece into your home!

Tapestry is an ancient art form dating back over 2000 years. In the UK and Europe, tapestry art was most prominent during the middle-ages. Barons and knights would adorn their castle walls with them for both decoration and to keep in the warmth.

A beautiful tapestry wall hanging will be sure to liven up any room and create a focal point. The wide range of styles and classical artwork means there is something to suit every taste and every home.

- Fabric Composition for Wall Hanging: 100% cotton
- Can be easily cleaned at home with a damp cloth. No need for dry cleaning.
- Features a hidden pocket at the top for sliding a rod into for easy hanging.



Design Inspired by Walter Crane

This pattern was inspired by an 1878 wallpaper *Almond Blossom and Swallow*, designed by Walter Crane (1845–1915), one of the leading exponents of the Aesthetic Movement and the first President of the Arts and Crafts Exhibition Society. Crane's wallpaper designs were often narrative and show the influence of Japanese art on British culture. This wallpaper pattern was exhibited at the International Exhibition held in Paris in 1878, where it was awarded a gold medal. The original design is now housed at the V&A.



CCOV-BLOS
Almond Blossom
and Swallow

Design Inspired by Bruce J. Talbert

This design, *Golden Fern*, was inspired by a furnishing fabric designed by Scottish architect, furniture designer and author, Bruce J. Talbert (1838–81), in 1875. Talbert favoured a new aesthetic derived from Japanese decorative art, also known as Aestheticism. The art movement was a complex mixture of several styles, and emphasised the importance of art above everything else and the pleasure to be found in beautiful things. This design is now held in the V&A archive.



CCOV-GFERN
Golden Fern



Celebrating creativity,
the V&A is the world's
leading museum of art,
design and performance.

Discover more at vam.ac.uk

Design Inspired by Jacob Marrel

Jacob Marrel (1614-1681) was a German-born painter who spent part of his working life in the Netherlands. He was greatly appreciated because of his still life art using the 'wild tulip'.

The tulip is a beautiful flower that originates from Turkey and was introduced to Western Europe in 1562. From that moment on, the Netherlands would forever be considered the home of the tulip. Many of Marrel's tulip paintings can be viewed at the Rijksmuseum in Amsterdam.



CCOV-JMTBK
Marrel's Tulip Black



CCOV-JMTWT
Marrel's Tulip White



Inspired by...

Jane Austen's life in Hampshire



CCOV-AUST
Austen Blue



CCOV-JANE
Jane's Oak

Jane Austen, one of the world's most famous authors, spent most of her life in Hampshire where its countryside and people influenced many of her novels. This design was inspired by an oak leaf motif from a pelisse coat thought to have belonged to Jane Austen. Oak leaves were a popular national symbol at the time.



Designs Inspired by Charles Voysey

English architect and designer, Charles Voysey (1857-1941), produced a wide range of designs for textiles and wallpaper. His patterns are characterised by bold, repeating patterns and natural forms. Signare have created two designs based on Voysey's original work.



CCOV-ALICE
Alice in Wonderland



CCOV-SPFL
Spring Flowers

Alice in Wonderland

Featuring all of the weird and wonderful characters you know and love from the eccentric and unpredictable 'Mad Hatter' to the witty 'Cheshire Cat'.

Spring Flowers

The colourful combination of pretty summer butterflies, birds and tulips is designed to help you create the perfect sun-sational outfit this year!

Designs Inspired by Charles Rennie Mackintosh

Charles Rennie Mackintosh (1868-1928) was a Scottish architect, designer and artist. His work was influential on European design movements such as Art Nouveau and Secessionism.

Mackintosh Simple Rose

Inspired by Mackintosh, the *Simple Rose* design contrasts strong right angles and floral-inspired decorative motifs with subtle curves. The deep red rose pattern is romantic and timeless.

Mackintosh Rose and Teardrop

Mackintosh used stylised roses throughout his career, and this design is one of the most developed; each one of the twenty roses being completely unique.



CCOV-RMSP
Simple Rose



CCOV-RMTD
Rose & Teardrop

Designs Inspired by William Morris

William Morris (1834–1896) was a British textile designer, poet and novelist. Associated with the British Arts and Crafts Movement, he was a major contributor to the revival of traditional British textile arts and methods of production. Signare have created a number of designs inspired by William Morris.

Strawberry Thief Design

Strawberry Thief design is instantly recognisable as the work of the decorative arts revivalist William Morris. It reproduces in glorious detail an original tapestry created by Morris in the late 19th century. The picture of a thrush stealing fresh strawberries is said to have been inspired by the Morris family's attempts to grow fruit at their Oxfordshire home.



CCOV-STBL, S'Thief Blue



CCOV-STRD, S'Thief Red



CCOV-CRAY, The Cray



CCOV-GLILY, Golden Lily



CCOV-WIOW, Willow Bough

The Cray

The flourishing flowers of William Morris's *The Cray* create a swirling pattern and bursts of colour throughout this delicately woven tapestry pattern.

Golden Lily

Inspired by the work of English textile designer J. H. Dearle, the striking seasonal fabric of entwined lily flowers creates a floral arrangement designed to blend well with sun-kissed pastel colours.

Willow Bough

Another pattern from our collection of William Morris designs. The delicate blue leaves are reminiscent of oriental art. Reproduced as a tapestry, the enduring pattern is seen from a new perspective.

The Crown and Royal Designs



CCOV-PN-CRWBK
Crown Black



CCOV-PN-CRWWT
Crown Beige



CCOV-PN-FDLBL
Fleur-de-lis Blue



CCOV-PN-FDLRD
Fleur-de-lis Red

Animal Designs



CCOV-PN-CHIBG
Chihuahua Beige



CCOV-PN-CHIBG
Chihuahua Beige



CCOV-PN-CHIBG
Chihuahua Beige



CCOV-PN-CHIOL
Chihuahua Beige



CCOV-PN-SCOTTIE
Scottie



CCOV-PN-STAG
Stag



CCOV-PN-WJACKET
Whistlejacket



CCOV-PN-YOGAC1
Yoga Cat 1

More William Morris Designs



CCOV-FREN
French Bulldog



CCOV-KGCS
King Charles Spaniel



CCOV-LAB
Labrador



CCOV-UJ
Union Flag



CCOV-RGD
Royal Guard



CCOV-MSLN
Miss London



CCOV-PAIS
Paisley



CCOV-RSTT
Royal Stewart Tartan



CCOV-ART-MORRIS-7
The peacock



92cm X 139cm

Floral and Garden Designs



CCOV-BUTT
Butterfly



CCOV-POP
Poppy



CCOV-ORC
Orchid



CCOV-THIS
Thistle

Bird Designs



CCOV-FLAM
Flamingo



CCOV-HUMM
Hummingbird



CCOV-LDBD
Ladybird



CCOV-ROB
Robin

Cat Designs



CCOV-CHEKY
Cheeky Cat



CCOV-CUDE
Catitude



CCOV-RAC
Racing



CCOV-RHOR
Running Horse

Horse Designs

Dog Designs



CCOV-FREN
French Bulldog



CCOV-KGCS
King Charles Spaniel



CCOV-LAB
Labrador



CCOV-PUG
Pug



CCOV-WES
Westie

Landmark and Heritage Designs



CCOV-UJ
Union Flag



CCOV-RGD
Royal Guard



CCOV-MSLN
Miss London



CCOV-LNBE
London Bear



CCOV-CART
Cartouche

Pattern Designs



CCOV-PAIS
Paisley



CCOV-RSTT
Royal Stewart Tartan



CCOV-MTRI
Multi' Triangle



CCOV-BHUT
Beach Hut



CCOV-SHELL
Sea Shell

Sea Life Designs

Designs Inspired by Great Art

Vincent van Gogh (1853-1890, Dutch Painter)

The Dutch Post-Impressionist painter, Vincent van Gogh, is one of the most famous and beloved artists of all time. He created over 2000 pieces of art but never found fame during his lifetime, dying at just 37 after struggling with mental illness and poverty.



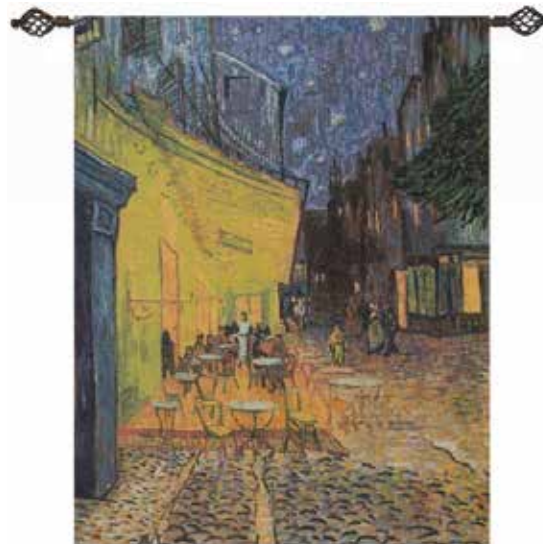
WH-VG-SN (120cm x 82cm)
The Starry Night



CCOV-ART-VANGOGH-1, Starry Night



WH-VG-SF (95cm x 139cm)
Sun Flower



WH-VG-CT (100cm x 138cm)
Cafe Terrace



CCOV-ART-VANGOGH-2, Iris



CCOV-ART-VANGOGH-3, Sun Flower

Claude Monet (1840-1926, French Painter)

Claude Monet helped give rise to the Impressionist movement in France during the late 1800s. Much of his artwork depicts landscapes in which he painted certain scenes a number of times to capture the changing light and seasons.

Monet purchased a house and gardens in Giverny, France during the 1880s, which he used as inspiration for a number of his paintings. This included designing the layout for the plants, trees, lakes and even installing a Japanese bridge. Two of his most famous paintings are included in our Signare tapestry collection. The detail and colour he imbued each picture with are an endless joy today.



WH-CM-WL (148cm x 69cm)
Water Lily



WH-CM-JB-SMALL (73cm x 68cm)
Japanese Bridge



CCOV-ART-MONET-1, Poppy Field



CCOV-ART-MONET-2, Water Lily



CCOV-ART-MONET-3, Japanese Bridge

The Lady and the Unicorn

The Lady and the Unicorn is a collection of six tapestries dating from around 1500 AD. Five of the tapestries are considered to depict the five senses of smell, taste, touch, hearing and sight.

Each picture depicts a noble lady in the centre with a unicorn on her left and a lion on her right. Other animals are also shown, including a monkey in some scenes.

The artwork currently resides in the Thermes de Cluny in Paris.



CCOV-ART-LU-LION
Lady and Unicorn-Lion



CCOV-ART-LU-UNI
Lady and Unicorn-Unicorn



CCOV-ART-LU-DE
A Mon Seul Desir



CCOV-ART-LU-HE
Sense of Hearing



CCOV-ART-LU-TA
Sense of Taste



CCOV-ART-LU-SI
Sense of Sight



CCOV-ART-LU-SM
Sense of Smell



CCOV-ART-LU-TO
Sense of Touch





WH-LU-DE

Size: 120cm x 85cm & 138cm x 116cm
A Mon Seul Desir



WH-LU-SI

Size: 120cm x 85cm & 138cm x 100cm
Sense of Sight



WH-LU-TA

Size: 120cm x 85cm & 138cm x 100cm
Sense of Taste



WH-LU-HE

Size: 120cm x 85cm & 138cm x 100cm
Sense of Hearing



WH-LU-SM

Size: 120cm x 85cm & 138cm x 100cm
Sense of Smell



WH-LU-TO

Size: 120cm x 85cm & 138cm x 100cm
Sense of Touch

William Morris (1834-1986, British Designer)

William Morris was a famous British textile designer during the 1800s. He is considered to be a major contributor in helping the British textile industry and their methods of production to grow and improve during this time.

Morris created hundreds of textile patterns during his lifetime, teaching himself about embroidery and becoming an expert in the process of how to dye materials.



WH-WM-LNFST (139cm x 87cm), Lion and the Forest



CCOV-ART-MORRIS-4
The Hare



CCOV-ART-MORRIS-5
The Lion



CCOV-ART-MORRIS-6
The Fox



CCOV-ART-MORRIS-1
Orange tree



WH-WM-WP (69cm x 139cm)
Woodpecker in Fruit Tree

Woodpecker in Fruit Tree tapestry was woven in 1877 and depicts a woodpecker sitting in a tree decorated with flowers and leaves. It is unusual in that it was designed completely by William Morris himself.

Lion and Forest tapestry is one part of a larger collection known as *The Forest* made in 1887. This stunning tapestry resides at the V&A in London.

William Morris Tree of Life Collection

The Tree of Life is a symbol of the abundance and continuity of life. It was inspired by a decorative technique known as Mille Fleur (French for 'Thousand Flowers'), meaning to create a background with many flowers, plants and other ornamental elements.



WH-WM-TLBL-1 (103cm x 138cm)
Tree of Life Blue 1



WH-WM-TLBL-2
(68cm x 160cm)
Tree of Life Blue 2



WH-WM-TLRD-1 (103cm x 138cm)
Tree of Life Red 1



WH-WM-TLRD-2
(68cm x 160cm)
Tree of Life Red 2



CCOV-ART-MORRIS-2
Tree of Life-Blue



CCOV-ART-MORRIS-3
Tree of Life-Red

Gustav Klimt (1862-1918, Austrian Artist)

Gustav Klimt is known for his paintings, murals and sketches, with the female body being a primary inspiration for his work. The early 1900s saw Klimt go through his 'Golden Phase', which was critically and commercially successful for him. This period is defined by his bold use of gold leaf and abstract depictions of the human form.

The tree of life has been used by many cultures to symbolise the connection between heaven and the underworld. The sacred tree having many religious or philosophical connotations. Klimt's *The Tree of Life* was painted in 1909 in the style of Art Nouveau. It was commissioned as a series of three mosaics to be displayed in the Palais Stoclet in Brussels, Belgium. This *Stoclet Frieze* also included a standing female figure and an embracing couple.



WH-GK-TL-1 (138cm x 82cm)
Tree of Life-Whole



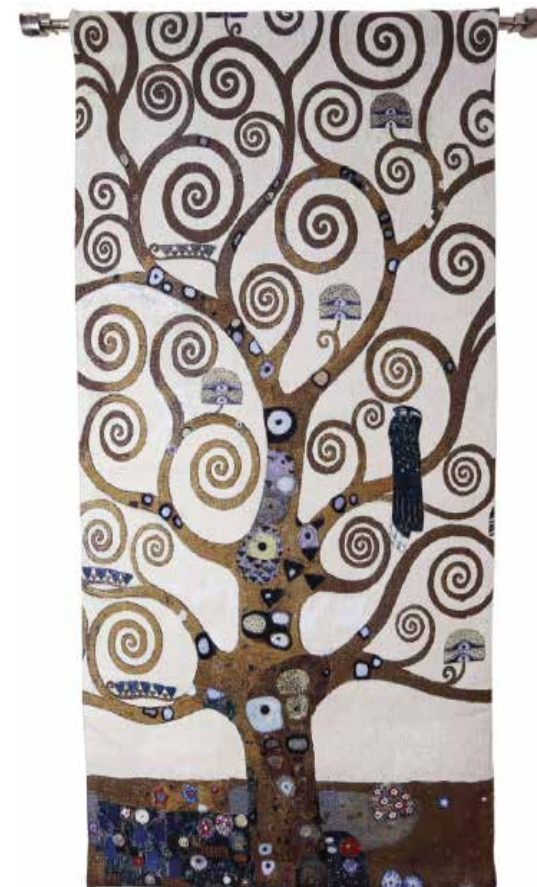
CCOV-ART-KLIMT-1
Lady



CCOV-ART-KLIMT-2
Tree of Life



CCOV-ART-KLIMT-3
Kiss



WH-GK-TL-2 (78cm x 138cm)
Tree of Life-Tree Only



WH-GK-KS (90cm x 138cm)
The Kiss



CCOV-ART-KLIMT-4
Gold Kiss



WH-GK-LF (100cm x 100cm)
Lady with Fan



WH-GK-WGD (100cm x 100cm)
Woman in Gold



WH-GK-SSPT (68cm x 173cm)
Portrait of Sea Serpent

Hokusai (1760-1849, Japanese Artist)



WH-JP-GWK (100cm x 69cm), Great Wave off Kanagawa



CCOV-ART-JP-WAVE
Great Wave off
Kanagawa

Edgar Degas (1834-1917, French Artist)



CCOV-ART-ED-BLR-1
The Star



CCOV-ART-ED-BLR-2
Two Dancers on a Stage



WH-ED-BA (89cm x 69cm)
Degas's Ballet Class

Frederic Leighton (1830-1896, English Painter)



WH-FL-FLAM (100cm x 100cm), Flaming June

Georges Seurat (1859-1891, French Painter)



WH-GS-LGJ (173cm x 68cm)
A Sunday Afternoon on the Island of La Grande Jatte



WH-TULIPVS (136cm x 98cm)
Tulips in a Vase



WH-FL
Size: 68cm x 51cm & 138cm x 105cm
White Beauties

Leonardo da Vinci (1452-1519, Italian Artist)



CCOV-ART-
LDV-ERMINE
Lady with an Ermine



CCOV-ART-
LDV-MONA
Mona Lisa

Johannes Vermeer (1632-1675, Dutch Painter)



CCOV-ART-JV-GIRL
Girl with a Pearl Earring

Théophile Steinlen (1859-1932, French Painter)



CCOV-ART-TS-CHAT
Tournée du Chat noir

Mappemonde tapestry



WH-MAP-1 (140cm x 99cm)
WH-Map-1



WH-MAP-2 (139cm x 109cm)
WH-Map-2

Edmund Leighton (1852-1922, English painter)



WH-EB-AC (100cm x 139cm)
Accolade



WH-EB-GS (98cm x 139cm)
God Speed

Bayeux Tapestry



WH-BT-HB (151cm x 45cm)
Bayeux Tapestry Hastings Battle

The Hunt of the Unicorn



WH-HU (100cm x 100cm)
The Unicorn is Found

Walter Crane (1845-1915, English Artist)



CCOV-ART-WC-SWAN
Swan

Jan Frans van Dael
(1764-1840,
Flemish Painter)



WH-FGP (100cm x 138cm)
WH-Flowers and Grapes

Jan van Huysum
(1682-1749,
Dutch Painter)



WH-JVH-HOLL (101cm x 139cm)
Hollyhocks and Other Flowers in a Vase



WH-ROD-120
Wall Hanging Rods (Size 2)
Extends from 120cm to 180cm

WH-ROD-70
Wall Hanging Rods (Size 1)
Extends from 70cm to 120cm

- Metallic rod for hanging your tapestry. Two size available.
- Ornamental end-pieces slide off allowing easy fitting of artwork.
- Two wall-mounting brackets are included.



WH-TASS
Wall Hanging Tassel

Add a touch of style to your wall hanging tapestry with these golden hanging tassels.

- Measures 85cm (33.5")
- Two tassels are included.





Signare[®]

Unit 2L, Albany Park, Frimley, Surrey, GU16 7PL, UK

Tel: 00 44 (0) 1276 29483 Fax: 00 44 (0) 845 257 2279 E-mail: info@acjade.co.uk

www.signaretrade.co.uk www.signaretapestry.com

Signare is distributed by AC Jade Trading Ltd. Registered in England and Wales No. 6420073. VAT No. 924 4388 12

