

2025 Preview



hello!

WELCOME

We have been trading in the wholesale gift and home-ware industry for over 30 years, supplying fantastic products to customers in the UK, Europe, and beyond! Offering a range of designs produced both in-house and with our license partners, all at fantastic prices.



Come and...

FIND US

Showrooms

We have two main showrooms; one in Sheffield, UK and our newest edition in Homexpo Paris, France.

Distribution Centres

There are two distribution centres; one in Cornwall, UK and another in Wrocław, Poland.

Offices

We have six main offices in Europe with eleven international departments.





relaxea^{zzz}



Maddie the Axolotl **CUSH403** / Finley the Clown Fish **CUSH353**
Frida the Taco **CUSH400** / Bembo the Parrot **CUSH402** / Oliver the Pig **CUSH355**
Nori the Ramen Bowl **CUSH401** / Gigi the Toy Poodle **CUSH351** / Frances the Rabbit **CUSH352**



2-in-1 travel pillow

Pedro the Avocado **CUSH422** / Shuggs the Shiba Inu **CUSH421**
Susu the Panda **CUSH420**

SWAPSEAzzz



zzz



inKredible
Stationery

EverLaSting Pencils

Everlasting
Pencil



Everlasting Pencil **STA377**



Erasable Pen **PEN266**



Everlasting Pencil **STA364**



Erasable Pen **PEN252**



Fine Tip Pen **PEN297**



Rainbow Ink Pen **PEN260**

The FOODIE MALS



Taco & Hot Sauce Ceramic Salt & Pepper Set **SP111**
Ramen Ceramic Salt & Pepper Set **SP110** / Squidglys Plush Keyrings **KEY291**



Hand Cream **HANDC14** / Lip Balm **LIP167** / Keyring **KEY296**
Pop Top Bottle **BOT345** / Bento Lunch Box **LBOX115** / Lip Balm Tin **LIP166**
Everlasting Pencil **STA371** / Pencil Case **PCASE86**

ADORAMALS

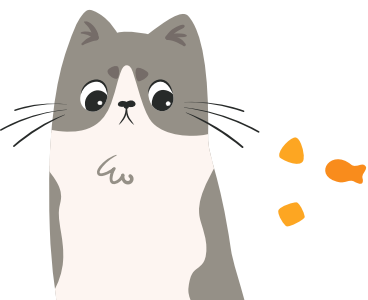


Magnetic Bookmarks **BOOK15** / Snack Box **LBOX117**
Axolotl Fluffy Notebook **MEMO131** / Mini Purse **PUR143**



BEANS & CO





Stainless Steel Bottle **BOT363** / Purse **PUR168**
Tote Bag **CBAG131** / Mug **MUG475**





Capybara



Knights & Dragons





Drawstring Bag **BAG221**



Mug **MUG470**



Snack Box **LBOX125**



Pencil Pot **PCASE94**





Shatterproof Sippy Cup **SCUP02** / Glitter Snow Storm **WB37**
Puzzle Cube Toy **TY954** / Magnetic Bookmarks **BOOK17**

Unicorn Magic



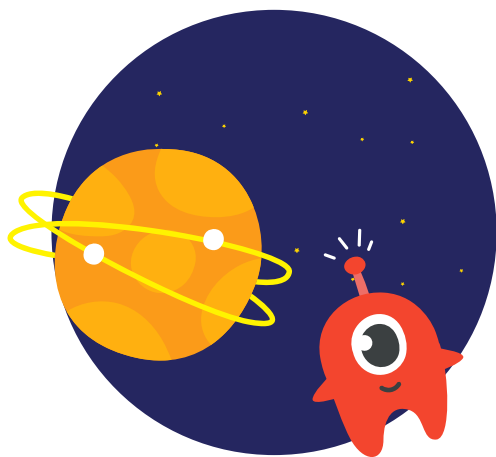
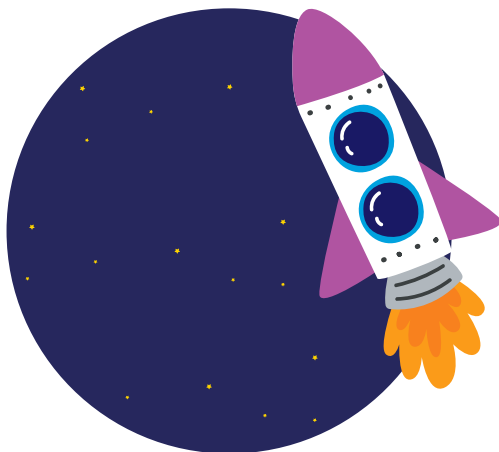
Matchbook Nail Files **NAIL152**
Rainbow Bath Bomb **BATH95** / Shower Jelly **BATH91**

A vibrant, cartoon-style illustration of outer space. The background is a deep blue with large, dark blue, wavy, nebula-like patterns. In the top left, a white rocket with red fins and a red nose cone is flying upwards, leaving a large, bright orange flame trail. A small girl with brown hair and a pink bow is visible through the circular porthole. In the top right, a large, light blue planet with darker blue circular patterns is partially visible. In the bottom left, an orange planet with yellow rings and two white dots is shown. In the bottom right, a pink, two-eyed alien with a transparent helmet stands on a grey, cratered moon. Several yellow and blue stars are scattered throughout the scene.

Space Cadets



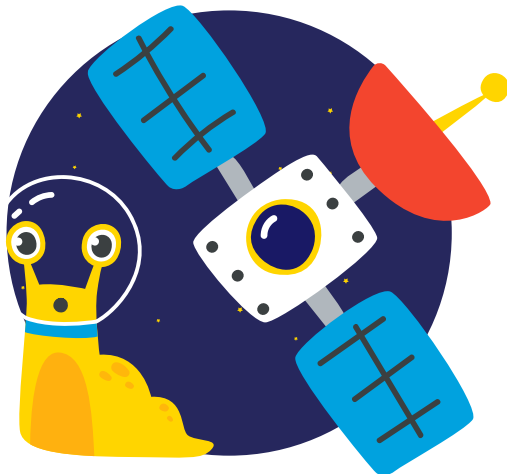
Snack Box **LBOX127**



Puzzle Cube Toy **TY1036**



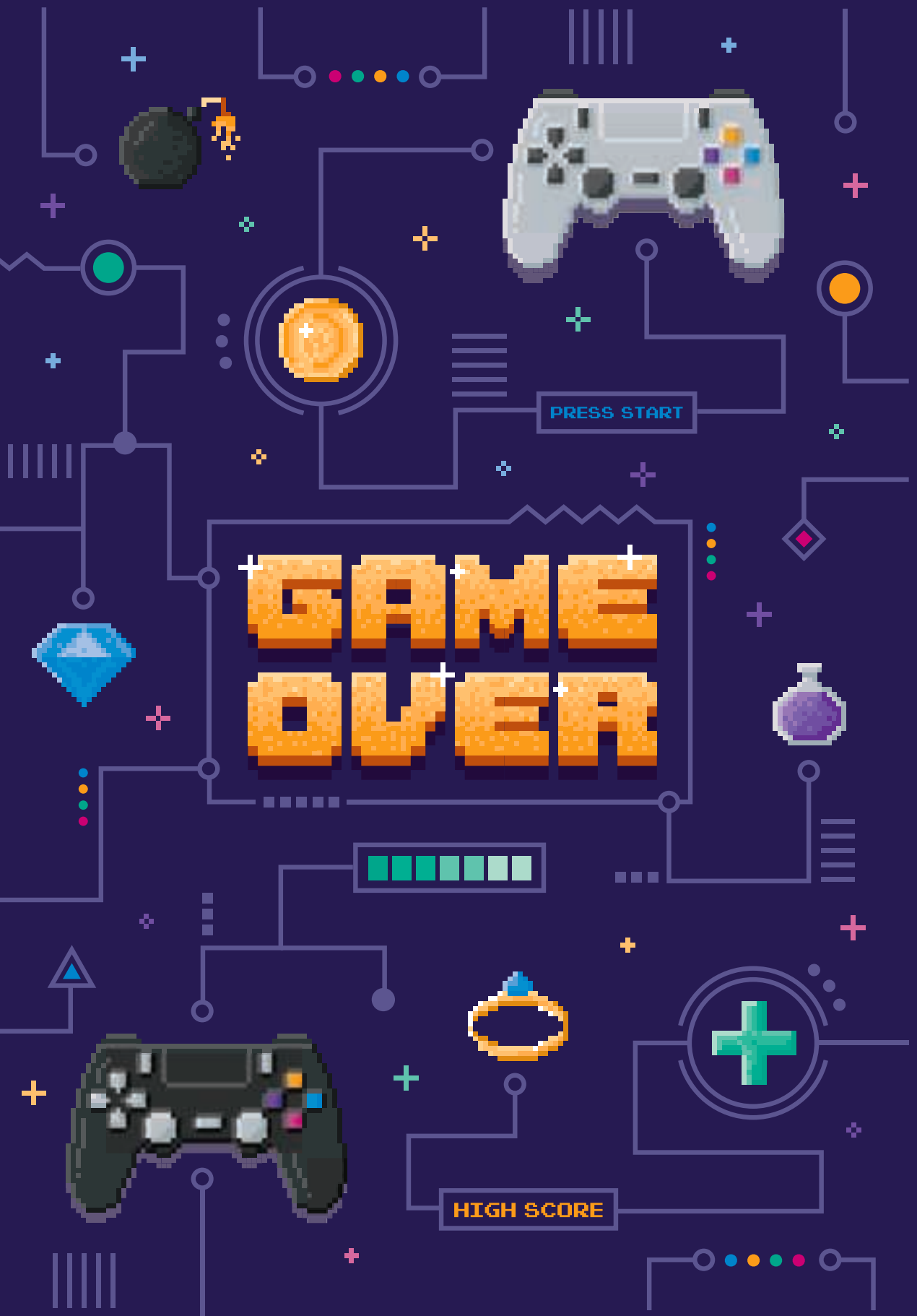
Mug **MUG471**



LOADING



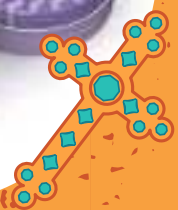
Cool Bag **COOLB141** / Mug **MUG472**
Pop Top Bottle **BOT356** / Bento Lunch Box **LBOX129**







Stainless Steel Bottle **BOT361**



Lip Balm Tin **LIP176**



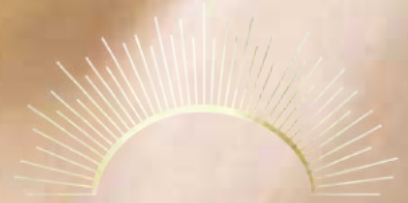
Cool Bag **COOLB136**



Pencil Pot **PCASE93**

BOO!





CHAKRA

Incense Burner Dish **SOB32**
Ashcatcher Incense Burner **SOB34**





Autumn HARVEST



Mug & Coaster Set **MUGC40**



Hand Cream **HANDC13** / Manicure Set **NAIL150** / Mirror **MIRR77**



A vibrant, stylized illustration of various summer fruits. The background is a bright yellow with diagonal stripes. The fruits include a whole orange, a slice of orange, a watermelon slice, a papaya slice, a banana, a whole apple, a pineapple, a lime slice, and a strawberry. The text "Summer FRUITS" is centered in the middle. "Summer" is in a red, cursive font, and "FRUITS" is in a teal, bold, sans-serif font.

Summer FRUITS



Hand Cream **HANDC17** / Stainless Steel Bottle **BOT364** / Lip Balm Stick **LIP175**

TROPICAL

Frogs





Nail File **NAIL160**



Mug **MUG465**



Stainless Steel Bottle **BOT360**



Lunch Box Set **LBOX123**





Coastal





Cool Bag **COOLB113** / Lunch Box **LBOX94** / Cup **RPCUP02**



Nectar Meadows



Shaped Wooden Jigsaw **JIG07**



Set of 3 Lunch Box **LBOX94**



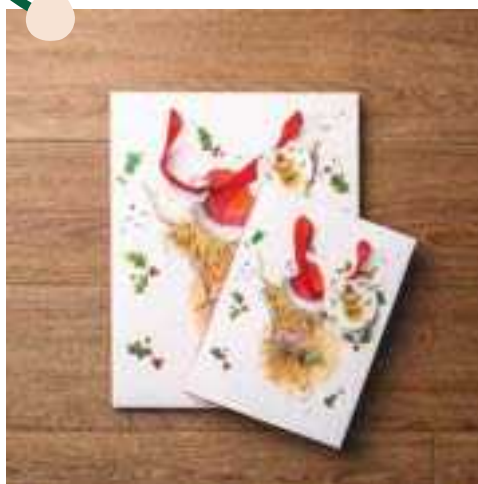
Compact Mirror **MIRR65**



Recycled Notebook **MEMO98**







Jan Pashley Gift Bags **XGBAG117** / Adoramals Pencils **XSTA368**
Baker Street Pens **XSTA344** / Baker Street Bath Bombs **XBATH84**



Compact Mirror **XMIRR74** / Hand Cream **XHANDC12** / Lip Balm **XLIP150**

Pusheen™

© 2025 Pusheen Corp.



Bento Lunch Box **LBOX116**



Digital Watch **WATC26**

PADDINGTON™



Travel Pillow **CUSH381**

© P&Co. Ltd./SC 2025 Licensed on behalf of Studiocanal S.A.S by Copyrights Group



Playing Cards **PCARD12**



Left: Digital Watch **WATC25** Right: Solar Pal **FF144**



MINECRAFT





Erasable Pen **PEN275**



Glow in the Dark Digital Watch **WATC24**



01

HatsuneMiku.



初音ミク

HATSUNE MIKU



Digital Watch **WATC32**



Bento Lunch Box **LBOX132**



Nail File **NAIL164**



Lip Balm Tin **LIP179**

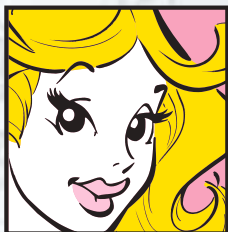
NARUTO SHIPPUDEN

©2002 MASASHI KISHIMOTO / 2007 SHIPPUDEN All Rights Reserved.



Astérix®

© 6™ AAROMAN ANIMATIONS LTD/WALLACE&GROMIT LTD 2025. ALL RIGHTS RESERVED.



Idefix (Dogmatix) Solar Pal **FF142** / Asterix Head Shaped Mug **LMUG21**
Obelix Head Shaped Mug **LMUG22**

Wallace & Gromit
Est. 1989



Erasable Pen PEN283

© 2025 AARDMAN ANIMATIONS LTD/WALLACE&GROMIT LTD 2025. ALL RIGHTS RESERVED.

★
AARDMAN

AARDMAN, SHAUN THE SHEEP
AND SHAUN'S IMAGE ARE
TRADE MARKS OF AARDMAN
ANIMATIONS LIMITED 2025.
ALL RIGHTS RESERVED.

Shaun the Sheep™



Squidgly **CUSH383** / Queasy Squeezy **TY973**
Compressed Towel **CT21** / Lip Balm Tin **LIP160**

MOOMIN[®]

©Moomin Characters™



Compact Mirror **MIRR79**
Snack Box **LBOX126**



Lip Balm Stick **LIP172**

Hand Cream **HANDC15** / Kaleidoscope **KAL11**

Unicorn Magic



Unicorn Magic FSDU **FSDU07**

Pre-filled FSDU: Free FSDU included when shown product pack is purchased.

Back to School



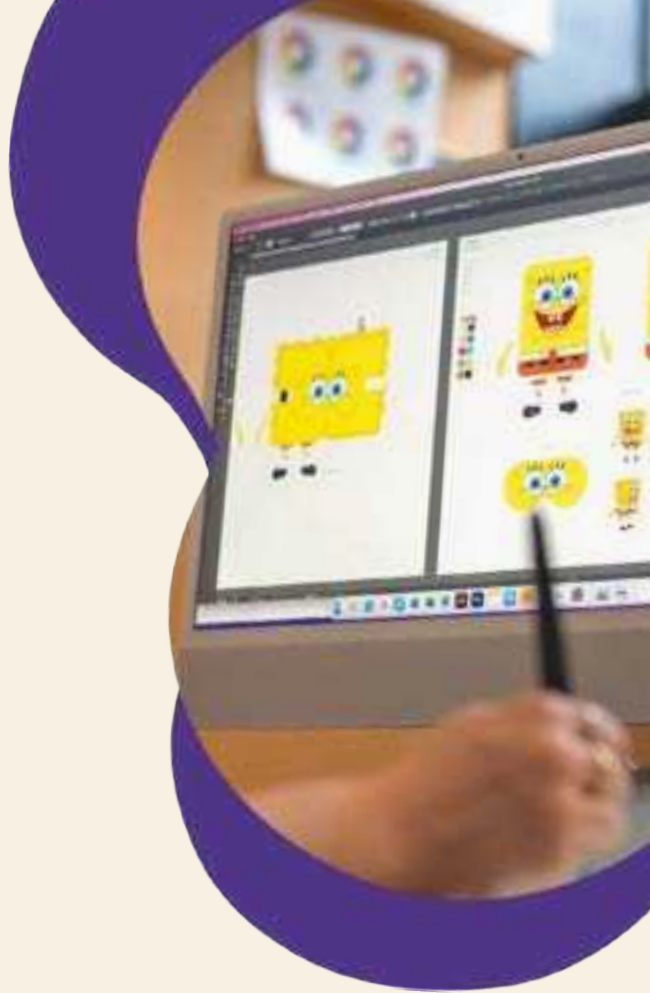
Back To School FSDU **FSDU06**

Pre-filled FSDU: Free FSDU included when shown product pack is purchased.

BESPOKE

Our bespoke design service is a complete package, led by our UK-based product design team. From the initial client consultation through to the final stages of mass production, we ensure every aspect of your product is carefully curated and executed to perfection.





WORK WITH US

1

Initial Client Meeting

To understand your requirements and expectations.

2

Initial Concept & Design Submission

We will design to the given brief. Once complete we will send you a final PDF with all designs, mock-ups and packaging.

3

Sample Production, Amends & Confirmation

Samples will be produced and sign off will be required. Amends can be made at this stage.

4

Production Samples

Production samples will be produced, amends can also be made at this stage.

5

Production & Shipping

Once you are happy with the samples and designs are signed off, production will commence. Once your order has been produced it will be shipped.

VISIT

Visit us at our 2025 Tradeshows and Exhibitions

Giving & Living Exeter, UK

12th -14th January
Stand 338/239

Home Expo Paris, France

6th - 24th January
Showroom Puckator France
Homexpo Paris 4 rue
Montservon, 95500 Gonesse,
France

Maison & Objet Paris, France

16th - 20th January
Hall 1 Stand A68

Scotland's Spring Fair Glasgow, Scotland

19th - 21st January
Stand G37

London Toy Fair Exeter, UK

22nd - 24th January
Stand UN39

FIMI Valencia, Spain

22nd - 24th January
Hall 7 Stand C55

Quick&More Milano, Italy

23rd - 26th January
Hall 6 Stand A31 B32

South Wales Gift Fair Bridgend, UK

26th - 28th January
Burton Central stand

Spielwarenmesse Nuremberg, Germany

28th January - 1st February
Hall 3C - B04

NEC Spring Fair Birmingham, UK

2nd - 5th February
Stand 4B10-C11

Intergift Madrid, Spain

5th - 8th February
Hall 7 Stand D01

Ambiente Frankfurt, Germany

7th - 11th February
Hall 4.2 Stand K11

Kid's Time Kielce, Poland

25th - 27th February
Hall 3 TBC

Algarve Showroom Quarteira, Portugal

8th - 12th March
Parque das Laranjeiras.
EN 125 - Entrada de
Vilamoura - Benfarras
8125-017 Quarteira

Porto Showroom Porto, Portugal

26th - 29th March
Grande Hotel do Porto -
Rua de Santa Catarina
197 - 4000-450 Porto

Formex Stockholm, Sweden

TBC

Maison & Objet Paris, France

TBC

Book in to visit our permanent showrooms:

Sheffield Showroom Sheffield, UK

Puckator Ltd
8-12 The Pavement
Duke Street S25QD

France Showroom Paris, France

Cellule No. C6.2 Homexpo Paris
4 rue Montservan 95500
Gonesse France

CONTACT



0800 011 6969
customerservices@puckator.co.uk
www.puckator.co.uk



+33 (0) 975182298
serviceclients@puckator.fr
www.puckator.fr



793 053 819
biuro@puckator.pl
www.puckator.pl



011 280 406
servizioclienti@puckator.it
www.puckator.it



+48 (0) 71 716 65 39
customerservices@puckator-wholesale.eu
www.puckator-wholesale.eu



96 369 1220
serviciocliente@puckator.es
www.puckator.es



+46 (0) 18 495 71 16
support@puckator.se
www.puckator.se



778 871 752
zakaznickyservis@puckator.cz
www.puckator.cz



DE 0800 181 3403
+44 (0) 1579 326 301
kundenservice@puckator.de
www.puckator.de



00351 30880 3341
apoiocliente@puckator.pt
www.puckator.pt



0800 022 1509
klantenservice@puckator.nl
www.puckator.nl



0800 758 70
klantenservice@puckator.nl
www.puckator.nl



+36 1701 0490
ugyfelszolgalat@puckator.hu
www.puckator.hu