

Lucy Kemp
JEWELLERY



2024 Wholesale Catalogue

About Us

Lucy Kemp Jewellery was started in 2001 by Lucy herself, and has evolved over the years to become a small team. All of our jewellery is handmade in our workshop located in the beautiful coastal town of Hayle, Cornwall.

We hand make all of our jewellery using recycled or eco sterling silver. As a brand our aim is to make beautiful and affordable jewellery that is perfect for gifting or a guilt free treat for any customer!



BANGLES



FEATHER CHARM

Available in 6cm, 6.5cm or 7cm



COPPER HEART

Available in 6cm, 6.5cm or 7cm



SILVER CHARMS

Available in 6cm, 6.5cm or 7cm



DIAMOND & TURQUOISE

Available in 6cm, 6.5cm or 7cm



LOVE KNOT BANGLE

Available in 6cm, 6.5cm or 7cm



DOUBLE LOVE KNOT

Available in 6cm, 6.5cm or 7cm



GEO CIRCLE

Available in 6cm, 6.5cm or 7cm



GEO OCTAGON

Available in 6cm, 6.5cm or 7cm



GEO SCROLL

Available in 6cm, 6.5cm or 7cm

BANGLES



GEO SWIRL

Available in 6cm, 6.5cm or 7cm



GEO WAVE

Available in 6cm, 6.5cm or 7cm



LACE BANGLE

Available in 6cm, 6.5cm or 7cm



FLORAL BANGLE

Available in 6cm, 6.5cm or 7cm



LONG HEART CHARM

Available in 6cm, 6.5cm or 7cm



SHELL CHARM

Available in 6cm, 6.5cm or 7cm



MONSTERA BANGLE

Available in 6cm, 6.5cm or 7cm



NUGGET BANGLE

Available in 6cm, 6.5cm or 7cm



TWIST BANGLE

Available in 6cm, 6.5cm or 7cm

BANGLES



TEXTURED CIRCLE
CHARM

Available in 6cm, 6.5cm or 7cm



TEXTURED HEART
CHARM

Available in 6cm, 6.5cm or 7cm



TEXTURED MOON
CHARM

Available in 6cm, 6.5cm or 7cm



TEXTURED STAR
CHARM

Available in 6cm, 6.5cm or 7cm



TILTED HEART CHARM

Available in 6cm, 6.5cm or 7cm



BOHO BANGLE

*Available in 6cm, 6.5cm or 7cm
Choice of 16 semi precious stones
available*



HEART & SEMI
PRECIOUS STONE

*Available in 6cm, 6.5cm or 7cm
Choice of 16 semi precious stones
available*



CUFFS



LEOPARD PRINT CUFF
Available in S/M (15cm) or M/L (16cm)



MENS COPPER CUFF
One Size



WOMENS COPPER CUFF
One Size- 4 textures to choose from

BRACELETS



SILVER & SEMI PRECIOUS STONE
One Size



BAR BRACELET
Adjustable to fit



BEAD BRACELET
One Size



BOHO FEATHER
One Size



CIRCLE CHARMS
One Size



LARGE NUGGET
One Size

BRACELETS



MINI NUGGET WITH
SEMI PRECIOUS
STONES

*Choice of 16 semi precious stones
available*



NUGGET CHARM

Choose up to 3 nugget charms



RINGS BRACELET

One Size



SEMI PRECIOUS
STONE

Choice of 16 semi precious stones



SHELL CHARM

One Size



SMALL NUGGET

One Size



STAR & MOON

One Size



STAR CHARM

One Size



OVAL CHARM

One Size

BRACELETS



TILTED HEART CHARM

One Size



TWO BEAD

One Size

NECKLACES



BAR NECKLACE

Integrated 20" chain



CHARM NECKLACE

Available in either 25" or 36"



LARGE CIRCLES

22" Chain



LONG CIRCLE CHARM

32" Chain



LOVE KNOT

18" Chain



LARGE NUGGET

18" Chain

NECKLACES



STAR & MOON CHARM
18" Chain



SHORT STAR CHARM
18" Chain



SHORT TILTED HEART
18" Chain



SMALL NUGGET
18" Chain



THREE HEART CHARM
18" Chain



TRIPLE HEART
18" Chain

PENDANTS



ST CHRISTOPHER
Choice of either 16 or 18" chain



DIAMOND TURQUOISE
Choice of either 16 or 18" chain



TEAR DROP
GEMSTONE
*Available with a choice of 16 semi
precious stones
Choice of 14, 16, or 18" chain*

PENDANTS



BOHO PENDANT

*Choice of stamps
16 semi precious stones
Choice of either 16 or 18" chain*



CELESTIAL HOOP

*Available with Turquoise, Pearl
or Rose Quartz stones
Choice of either 16 or 18" chain*



COMPASS DOG TAG

Comes on a 24" chain



DINKY INITIAL

*Available in A-Z
Choice of either 16 or 18" chain*



DINKY ZODIAC STAR SIGN

*Choose any of the 12 star signs
Choice of either 16 or 18" chain*



DOUBLE HEART

Choice of either 18 or 20" chain



FEATHER WITH DIAMOND AND TURQUOISE

Choice of 18 or 20" chain



HEART & SEMI PRECIOUS STONE

*Available with a choice of 16 semi
precious stones
Choice of 16 or 18" chain*



LARGE INGOT

*Choice of either 16 or 18" chain
Can be stamped with either a
heart or star*

PENDANTS



SMALL INGOT

*Choice of either 16 or 18" chain
Can be stamped with either a
heart or star*



JASMINE PENDANT

Choice of either 16 or 18" chain



LARGE DROP BAR
GEMSTONE

*Available with a choice of 16 semi
precious stones
Choice of 16, 18 or 20" chain*



LARGE NUGGET

Choice of either 16 or 18" chain



LARGE TEXTURED
CIRCLE

Choice of either 16 or 18" chain



LARGE TEXTURED
STAR

Choice of either 16 or 18" chain



LONG HEART CHARM

Choice of either 16 or 18" chain



MONSTERA

Choice of either 16 or 18" chain



NUGGET CHARMS

*Choose up to 3 nugget charms
Choice of either 16 or 18" chain*

PENDANTS



PALM

Choice of either 16 or 18" chain



SHELL CHARM

Choice of either 16 or 18" chain



SMALL FEATHER

Choice of either 16 or 18" chain



SMALL DROP
GEMSTONE

*Available with a choice of 16 semi
precious stones
Choice of 16, 18 or 20" chain*



TALISMAN

Choice of either 16 or 18" chain



STAR & MOON
GEMSTONE CLUSTER

*Available with a choice of 16 semi
precious stones
Choice of 16, 18 or 20" chain*



SUN PENDANT

Choice of either 16 or 18" chain



SMALL TEXTURED
CIRCLE

Choice of either 16 or 18" chain



TALISMAN SPINNER

*Choice of either 16, 18, 20, 24, 26
or 28" chain*

PENDANTS



SMALL TEXTURED
TEARDROP

Choice of either 16 or 18" chain



SMALL TEXTURED
HEART

Choice of either 16 or 18" chain



SMALL TEXTURED
MOON

Choice of either 16 or 18" chain



SMALL TEXTURED
TILTED HEART

Choice of either 16 or 18" chain

EARRINGS



CRESCENT MOON

On ear wires



DIAMOND & TURQUOISE

On ear wires



GEMSTONE DOT

With Amethyst

EARRINGS



GEMSTONE DOT
With Amazonite



GEMSTONE DOT
With Labradorite



GEMSTONE DOT
With Rose Quartz



GEMSTONE DOT
With Turquoise



GEO CIRCLE
On ear wires



GEO OCTAGON
On ear wires



GEO TEARDROP
On ear wires



GEO TRIANGLE
On ear wires



GEO WAVE
On ear wires

EARRINGS



CELESTIAL HOOP
With Pearl



CELESTIAL HOOP
With Rose Quartz



CELESTIAL HOOP
With Turquoise



CELESTIAL SMALL
HOOP
*Available with Turquoise, Rose
Quartz or Pearl stones*



JASMINE
On ear wires



LEOPARD PRINT DISC
Large discs on ear wires



LEOPARD PRINT DISC
Small discs on ear wires



LONG D EARRINGS
7cm drop - with a long ear wire



LONG HEART
Textured hearts on ear wires

EARRINGS



LOVE KNOT EARRINGS
Made with sterling silver eco wire



MEDIUM EVERYDAY
Butterfly fastening for comfort



MINI TEXTURED -
CIRCLE
On ear wires



MINI TEXTURED -
HEART
On ear wires



MINI TEXTURED -
MISMATCH
On ear wires



MINI TEXTURED -
MOON
On ear wires



MINI TEXTURED -
STAR
On ear wires



MINI TEXTURED -
TEARDROP
On ear wires



MINI TEXTURED -
TILTED HEART
On ear wires

EARRINGS



MOON & TURQUOISE

Butterfly fastening for comfort



NUGGET EARRINGS

On ear wires



PALM EARRINGS

On ear wires



SHELL EARRINGS

On ear wires



SHIELD EARRINGS

Amazonite - on ear wires



SHIELD EARRINGS

Amethyst - on ear wires



SHIELD EARRINGS

Rose Quartz - on ear wires



SHIELD EARRINGS

Turquoise - on ear wires



SHIELD EARRINGS

Crystal Quartz - on ear wires

EARRINGS



SHIELD EARRINGS
Labradorite - on ear wires



STICK EARRINGS
On ear wires



SUN & MOON
MISMATCH
On ear wires



SUNBURST EARRINGS
Butterfly fastening for comfort



TALISMAN EARRINGS
On ear wires



LONG RECTANGLE
Lace textured - on ear wires



TEXTURED RAINBOW
Amazonite - on ear wires



TEXTURED RAINBOW
Amethyst - on ear wires



TEXTURED RAINBOW
Labradorite - on ear wires

EARRINGS



TEXTURED RAINBOW
Rose Quartz - on ear wires



TEXTURED RAINBOW
Turquoise - on ear wires



THREADER
Threader earrings with silver beads



THREADER
Threader earrings with Turquoise beads



THREADER
Threader earrings with Pearl beads



THREADER
Threader earrings with Rose Quartz



THREADER
Threader earrings with a choice of charms; Hearts, Teardrops, Pendulums & Arrows.



TWO CIRCLE HOOP
Product code: 123456



BOHO DOME
Choice of 16 semi precious stones available

EARRINGS



HEART & SEMI
PRECIOUS

*Choice of 16 semi precious stones
available*



BOHO EARRINGS

*Choice of 16 semi precious stones
available*



GEMSTONE STICK

*Choice of 15 semi precious stones
available*

HOOPS



STAR BEAD

Hoop size 14-15mm



ARROW CHARM

Hoop size 14-15mm



FEATHER

Hoop size 20mm

HOOPS



BALL CHARM

Hoop size 14-15mm



TEARDROP CHARM

Hoop size 14-15mm



GEO HEART CHARM

Hoop size 14-15mm



TURQUOISE BEAD

Hoop size 14-15mm



GEO STAR CHARM

Hoop size 14-15mm



PENDULUM CHARM

Hoop size 14-15mm



HEART BEAD

Hoop size 14-15mm



HAMSA HAND

Hoop size 14-15mm



CRESCENT MOON

Hoop size 14-15mm

HOOPS



BOOB CHARM

Hoop size 14-15mm



MIDDLE FINGER

Hoop size 14-15mm



MINI GEMSTONE

Choice of 16 semi precious stones available



TILTED HEART

Choice of classic or sleeper hoop



DAISY CHARM HOOPS

Choice of classic or sleeper hoop



STAR & MOON

Choice of classic or sleeper hoop



HUGGIE LACE HOOPS

Butterfly fastening for comfort



NUGGET HOOPS

Hoop size 14-15mm



STAR HOOPS

Choice of classic or sleeper hoop

HOOPS



HEART HOOPS

Choice of classic or sleeper hoop



CIRCLE CHARM

Choice of classic or sleeper hoop



TEXTURED MOON
HOOPS

Choice of classic or sleeper hoop



EVERYDAY LACE
HOOPS

Butterfly fastening for comfort



EVERYDAY MINI
CIRCLE

Butterfly fastening for comfort



EVERYDAY MINI LACE

Butterfly fastening for comfort



STAMPED CHARM
HOOPS

*Available in; boobs, bees, heart
paw print, open heart, open
moon, open star, sun, no stamp.*



EVERYDAY OCTAGON
HOOPS

Butterfly fastening for comfort



EVERYDAY TWISTY
HOOPS

Butterfly fastening for comfort

HOOPS



EVERYDAY HOOPS
Butterfly fastening for comfort



EVERYDAY MEDIUM
HOOPS
Butterfly fastening for comfort



LARGE OCTAGON
HOOPS
Butterfly fastening for comfort



LARGE EVERYDAY
HOOPS
Butterfly fastening for comfort



GEMSTONE HOOPS
Amethyst



GEMSTONE HOOPS
Rose Quartz



GEMSTONE HOOPS
Turquoise



GEMSTONE HOOPS
Labradorite



MONSTERA CHARM
Hoop size 14-15mm

HOOPS



TALISMAN CHARM
15mm Hoop



LEOPARD PRINT
TEXTURED
Butterfly fastening for comfort



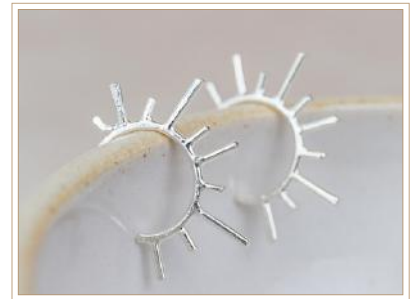
MARBLE TEXTURED
Butterfly fastening for comfort



WOODEN GRAIN
TEXTURED
Butterfly fastening for comfort



SUNBURST
Butterfly fastening for comfort



SUN HOOPS
Butterfly fastening for comfort



FLORAL HOOPS
Butterfly fastening for comfort

MINI STUDS

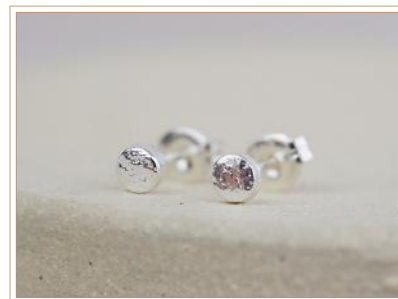


INITIAL STUDS

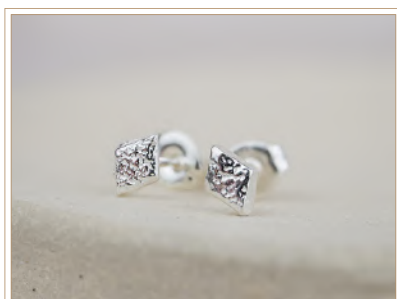
A-Z available



CHEVRON



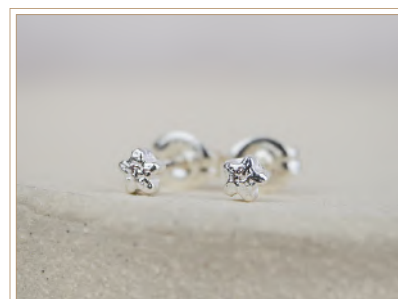
CIRCLE



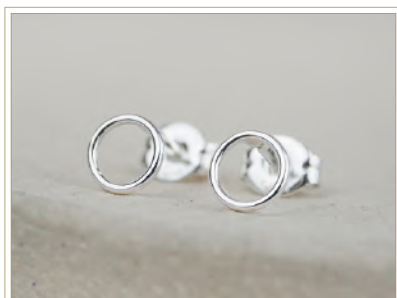
DIAMOND



DOTTY STICK



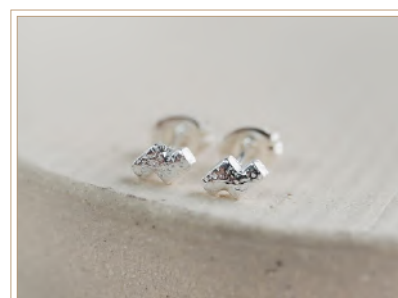
FLOWER



GEO CIRCLE



GEO SQUARE

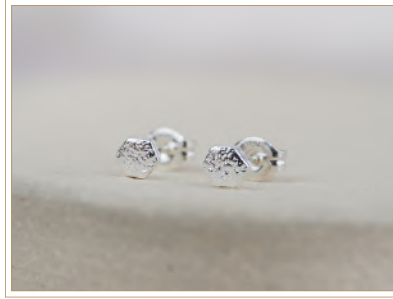


GEOMETRIC

MINI STUDS



HEART



HEXAGON



MOON



SQUARE



STAR



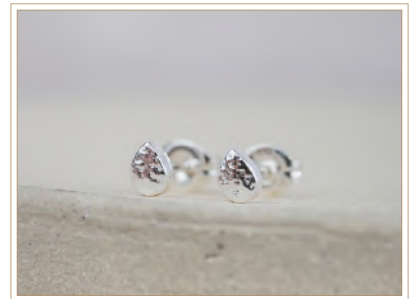
STICK



TRIANGLE

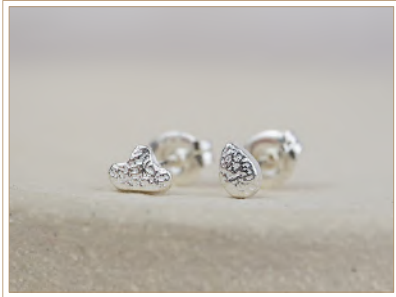


TWISTY



TEARDROP

MINI STUDS



CLOUD & RAINBOW



HUGS & KISSES



MOON & STAR



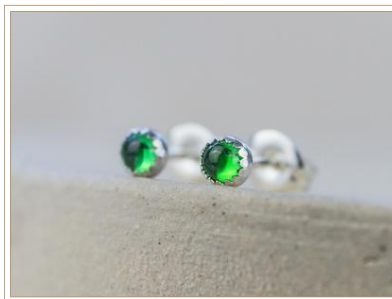
STARBURSTS



LOVE KNOT



ABSTRACT HEARTS



MINI STUDS WITH
SEMI PRECIOUS
STONES

*Choice of 16 semi precious stones
available*

STUDS



DOTTY CIRCLE



LACE CAPSULE

Delicate lace texture to the front



LOVE KNOT



NUGGET STUDS

Small and Medium available



SHELL



SMALL LOVE KNOT



TEXTURED CIRCLE



TEXTURED HEART



TEXTURED MOON

STUDS



TEXTURED STAR



TEXTURED TILTED
HEART



BOHO DISC

*Choice of 16 semi precious stones
available*



STAMPED STUDS

*Choose from; Boob, Bees, Middle
Finger, Heart Paw Print, Open
Heart, Open Moon, Open Star,
Sun, No stamp*

RINGS



CORNISH KADON

*Available in small (K), medium
(N), large (P)*



LOVE KNOT

*Available in small (K), medium
(N), large (P)*



MINI CIRCLE

*Available in small (K), medium
(N), large (P)*

RINGS



MINI DIAMOND

Available in small (K), medium (N), large (P)



MINI FLOWER

Available in small (K), medium (N), large (P)



MINI HEART

Available in small (K), medium (N), large (P)



MINI HEXAGON

Available in small (K), medium (N), large (P)



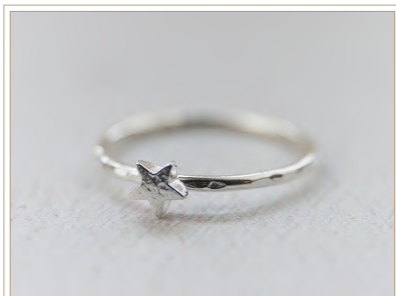
MINI MOON

Available in small (K), medium (N), large (P)



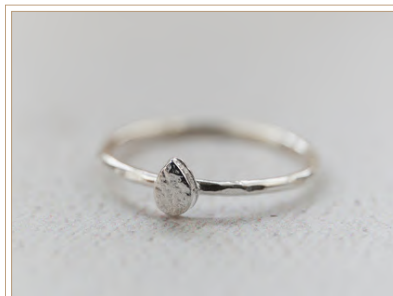
MINI SQUARE

Available in small (K), medium (N), large (P)



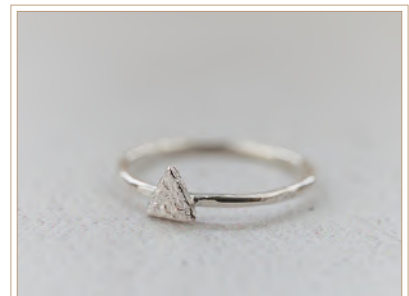
MINI STAR

Available in small (K), medium (N), large (P)



MINI TEARDROP

Available in small (K), medium (N), large (P)



MINI TRIANGLE

Available in small (K), medium (N), large (P)

RINGS



NUGGET

Available in small (K), medium (N), large (P)



SHELL

Available in small (K), medium (N), large (P)



FLORAL WRAP
AROUND THUMB RING

One size - adjustable



HAMMERED WRAP
AROUND THUMB RING

One size - adjustable



LACE WRAP AROUND
THUMB RING

One size - adjustable



LOVE KNOT
GEMSTONE RING

Choice of 16 semi precious stones available



GEMSTONE STACKING
RING

Choice of 16 semi precious stones available

ANKLETS



FLOWER CHARM

One size



ARROW CHARM

One size



BALL CHARM

One size



MOON & STAR

One size



CIRCLE CHARM

One size



FEATHER CHARM

One size



GEO HEART

One size



OPEN HEART

One size



OVAL CHARM

One size

ANKLETS



SHELL CHARM

One size



STAR CHARM

One size



TILTED HEART

CHARM
One size



CROSS CHARM

One size



GEO FLOWER CHARM

One size



HEART CHARM

One size



MINI HEART CHAIN

One size



PENDULUM CHARM

One size



TEARDROP CHARM

One size



ANKLETS



SEMI PRECIOUS
STONE

*Choice of 16 semi precious stones
available*

TOE RINGS



HAMMERED

One size - adjustable



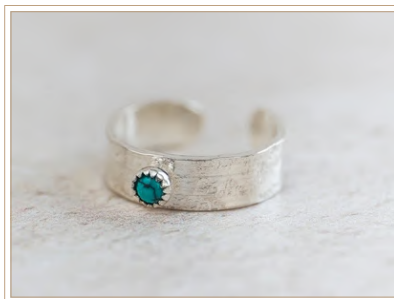
LACE

One size - adjustable



LEOPARD PRINT

One size - adjustable



SEMI PRECIOUS

*Choice of 16 semi precious stones
available*



PICK UP PACKS



DINKY INITIAL PENDANT SET

*Full set of 26 dinky initial
pendants. Available on 16 or 18"
chains.*



DINKY ZODIAC PENDANT SET

*Full set of 12 dinky zodiac star
sign pendants. Available on 16 or
18" chains.*



MINI STUD SET

One of each design - 23 Sets.

SILVER CARE PRODUCTS



SUNSHINE POLISHING CLOTH



PACKAGING



SMALL PILLOW
BOXES



MEDIUM PILLOW
BOXES



LARGE PILLOW
BOXES



DISPLAY STAND



CARDED ITEM
DISPLAY STAND



STUD BLOCKS

NEW IN



TALISMAN CLUSTER
NECKLACE

*Choice of 16 semi precious stones
available*



TALISMAN CLUSTER
BRACELET

*Choice of 16 semi precious stones
available*



TALISMAN SPINNER

*Choice of either 16, 18, 20, 24, 26
or 28" chain*



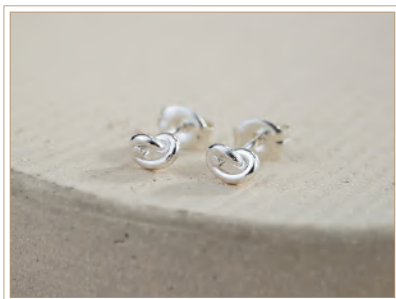
ABSTRACT HEART
MINI STUDS



STAR BURST MINI
STUDS



LOVE KNOT MINI
STUDS



SMALL LOVE KNOT
STUDS



LEOPARD PRINT CUFF
*Available in S/M (15cm) or M/L
(16cm)*



LEOPARD PRINT DISC
Large discs on ear wires

NEW IN



LEOPARD PRINT DISC
Small discs on ear wires



LEOPARD PRINT
TEXTURED
Butterfly fastening for comfort



LEOPARD PRINT TOE
RING
One size - adjustable



LEOPARD PRINT
DINKY
Choice of either 16 or 18" chain



LEOPARD PRINT
DINKY LIGHT
Choice of either 16 or 18" chain



LEOPARD PRINT
LIGHT CUFF
Available in S/M (15cm) or M/L (16cm)



LIGHT LEOPARD
PRINT HOOPS
Butterfly fastening for comfort



SILVER & COPPER
CIRCLE DROP
EARRINGS
On ear wires



BLUE OPALITE STONE
All of our birthstone pieces are now available with the choice of Blue Opalite.

NEW IN



SUNBURST EARRINGS
Butterfly fastening for comfort



CUT OUT HEART
EARRINGS
Butterfly fastening for comfort



RAINBOW EARRINGS
Amethyst



RAINBOW EARRINGS
Turquoise



RAINBOW EARRINGS
Amazonite



RAINBOW EARRINGS
Labradorite



RAINBOW EARRINGS
Crystal Quartz



RAINBOW EARRINGS
Rose Quartz