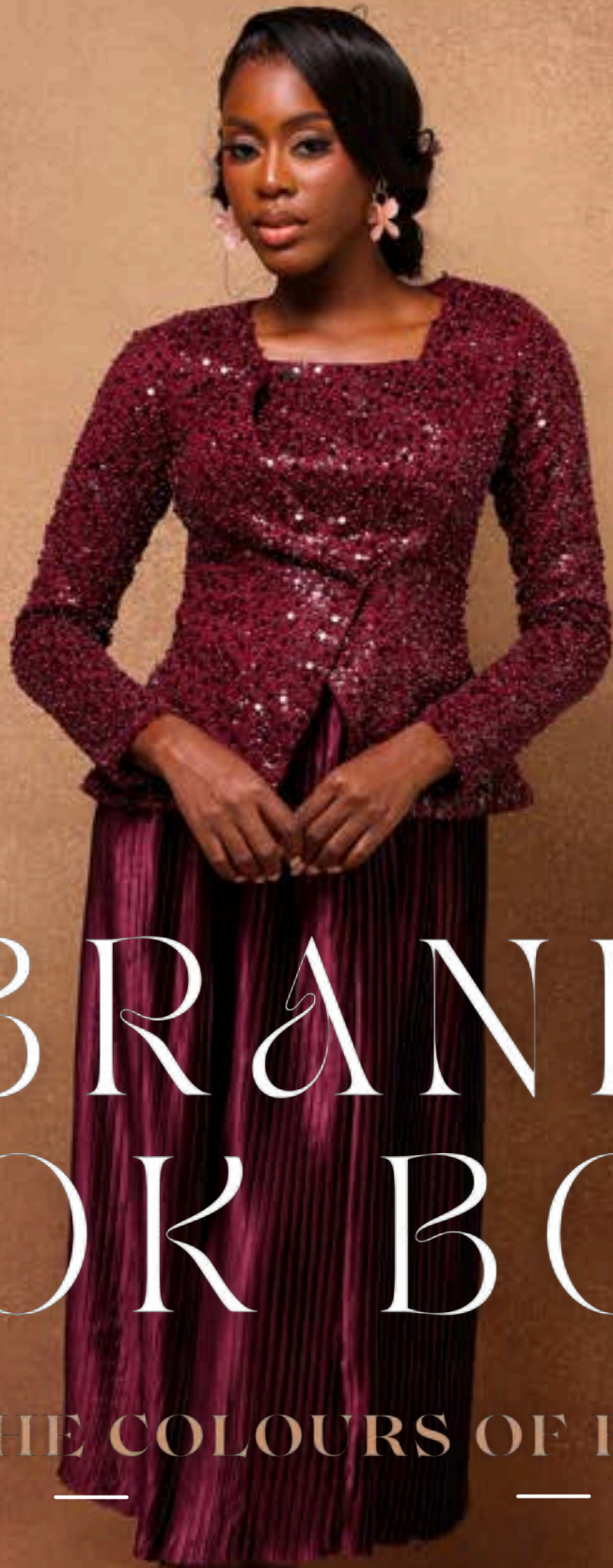


LUXTLEY

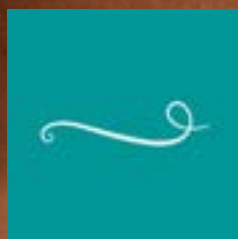


— BRAND —  
LOOKBOOK

— OLOORÌ: THE COLOURS OF FEMININITY —

NOW INTRODUCED IN SEASONAL RICH  
AUTUMN-WINTER HUES

[www.luxtley.com](http://www.luxtley.com)



# CONTENTS

— 01 —

The Brand

— 02 —

Corporate Wear

— 03 —

Evening & Occasion Wear

— 04 —

Accessories

— 05 —

Connect & Partner



# 01 THE BRAND

Radiant hues and bold, vibrant colours.

A strong feminine aesthetic.

Empowering ladies to show up bold, confident and première dame.

Inspired by the gracefulness, softness, gentle strength & tender power that defines every true lady.

WELCOME TO THE  
**LUXTL**  
BRAND LAUNCH

*Embrace Your Femininity*

*Embrace Your Femininity*

# ABOUT US

LUXTLEY, the quintessential Nigerian luxury lifestyle brand headquartered in London, with our exquisite product offering proudly handcrafted and manufactured in Lagos, Nigeria. We showcase Nigeria's rich culture, fine artistry, artisanal skill and sustainable processes; representing our Founders' vibrant cultural heritage.



We believe that every discerning lady exudes grace, confidence and opulence, so we provide that touch of comfort and sophistication to enhance her carriage. Our collections inspire ladies to embrace and exude their authentic femininity.

**Corporate, Evening &  
Occasion Wear**



— MEET OUR —  
FOUNDER —

Adesola Obunge (Lady M.A.C.) was born and raised in the vibrant city of Lagos, Nigeria.

From an early age, she watched her mother, a Fine Artist, create beautiful masterpieces using various fabrics with rich textures, colours, patterns and styles of African art and culture. Her mother handmade and sold traditional tie dye and batik fabrics, designed props and sets for several stage productions, and made rosettes for special occasions, amongst many other creative endeavours. In her earlier years she also sewed distinctive clothes.

This rich heritage of creative artistry sparked a flair in Adesola for all things beautiful. Femininity was also modelled before Adesola as far as ladies' outfits go, such that she was inspired to look good, feel great and help others be their own fashionista: by building a stylish wardrobe that will have them turning heads.



OUR  
COLLECTIONS

At LUXTLEY, we embrace opulence, delicately elaborate designs, and extravagance to create sophisticated statement pieces and exclusive designs for the modern, style conscious woman.

At LUXTLEY, we inspire ladies to joyfully embrace and confidently exude their femininity.

Every single piece in our 'Evening Wear & Occasion' Collections are beautifully handcrafted to ensure that the LUXTLEY LADY is graceful, distinguished and richly exquisite. LUXTLEY 'Signature' is our bold coinage of ready to wear and haute couture.

Our 'Corporate Wear' Collections showcase structured masterpieces that tell the LUXTLEY LADY's story of feminine originality, poise and flair.

I invite you to join me on this journey.

*Lady M.A.C.*

Founder & Lead Creative Officer



# OLOORÌ COLLECTION

Oh-LOH-ree

---

## THE COLOURS OF FEMININITY

**Oloorì**, a distinctive and elegant name rooted in the Yoruba culture of Nigeria is pronounced **oh-LOH-ree**. It carries the regal meaning of “queen” or “royalty”, embodying elegance. It bestows nobility, symbolizing every **LUXTLEY Lady’s** inherent worth and femininity.

**Oloorì** is a celebration of the journey into the heart of femininity.

It speaks to the woman who once hesitated, unsure of herself, yet blossomed beautifully. She transitioned from soft, muted tones to vibrant, bold hues, from simplicity to statement pieces that command attention. But this journey was more than a transformation of style – it was a profound evolution of spirit.

She became radiant, glowing with an inner light that mirrored her outward elegance. Joy filled her heart as she embraced her true essence, embodying her innate graces, gentle strength, and tender power.

She became an irresistible essence.  
The **LUXTLEY Lady** emerged!

Confident and joyful, she stepped fully into her own. Smiling and sure, she now invites every lady to join her on this deeply fulfilling journey.

To all who heed the call, she extends this heartfelt message:

**Dear LUXTLEY Lady,**

**You’re a masterpiece.  
Be authentically you.  
Embody your femininity.  
Be a LUXTLEY Lady.**








02



Corporate

Wear



## DÁRA TWO-TONE PEPLUM DRESS

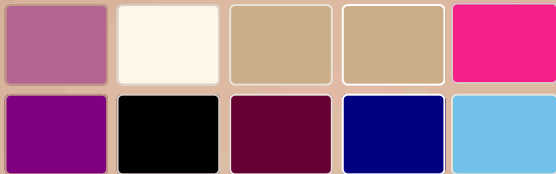
Graceful, charming, and undeniably feminine, the Dára Two-Tone Peplum Dress embodies refined style. Featuring an elegant asymmetric neckline and a delicate peplum detail that beautifully defines the waist, this dress is as practical as it is stylish.

Deep pockets add a thoughtful touch, allowing you to keep your phone close for capturing candid moments, or to simply perfect that special pose.





## COLOURWAYS



- 1/ Mauve (S) & Deep Purple~
- 2/ Cream (S) & Black\*~
- 3/ Tan (S) & Burgundy\*~
- 4/ Tan (S) & Navy Blue
- 5/ Baby Blue (S) & Fuchsia Pink

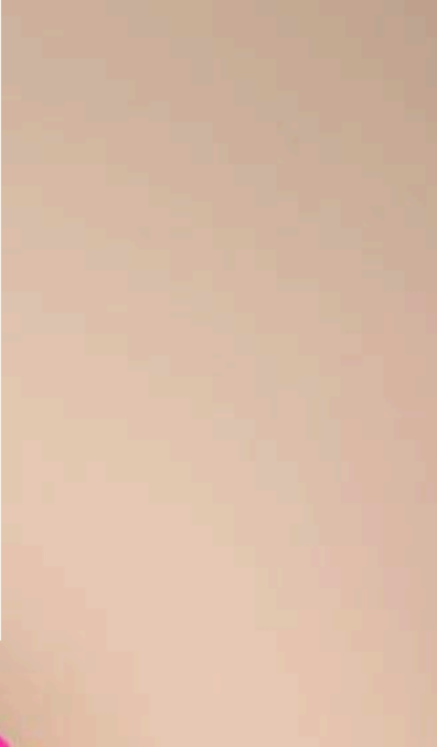
\*Stockist Exclusives

Now introduced in seasonal rich autumn-winter hues~





*z*



2



## ÌFÉDAYÒ BELTED FAUX-WRAP DRESS

The LUXTLEY Lady turns heads in the bestselling Ìfédayò Dress, expertly crafted from premium crepe fabric. Featuring a full skirt, deep side pockets, and a meticulously pleated bodice, this design combines style and substance effortlessly.

Ideal for any corporate setting, it seamlessly transitions into evening meetings and after-work social outings, ensuring she's impeccably dressed from day to night.





## ÌFÉDAYÒ BELTED FAUX-WRAP DRESS

The LUXTLEY Lady turns heads in the bestselling Ìfédayò Dress, expertly crafted from premium crepe fabric. Featuring a full skirt, deep side pockets, and a meticulously pleated bodice, this design combines style and substance effortlessly.

Ideal for any corporate setting, it seamlessly transitions into evening meetings and after-work social outings, ensuring she's impeccably dressed from day to night.





*L*





2



## COLOURWAYS



- 1/ Deep Purple~
- 2/ Fuchsia Pink
- 3/ Burgundy\*~
- 4/ Navy Blue~
- 5/ Black\*~

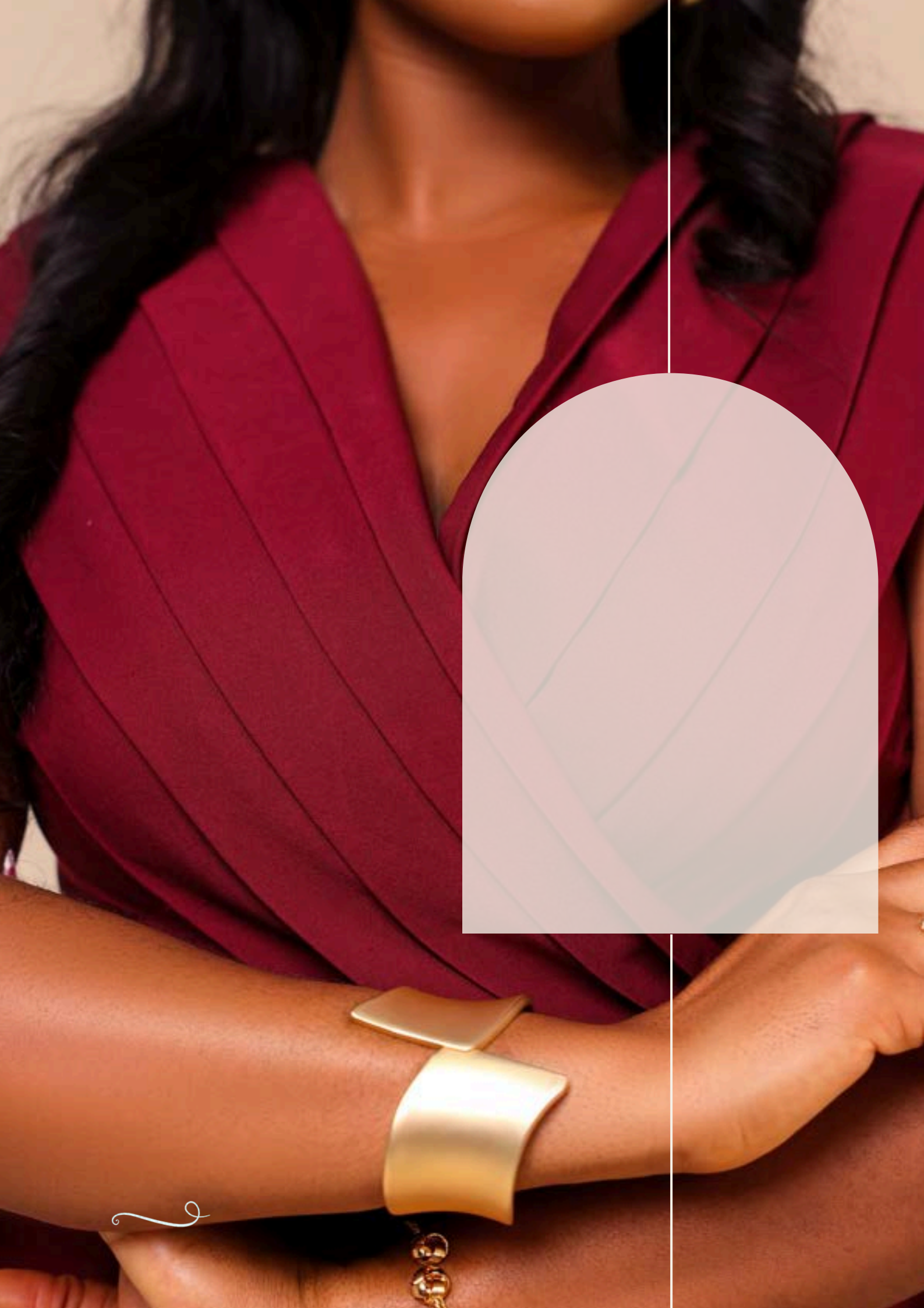
\*Stockist Exclusives

**Now introduced in seasonal rich autumn-winter hues~**





2

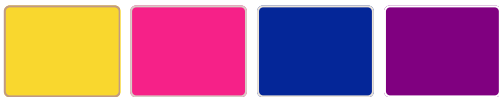


*~*





## IREOLÚ PEPLUM SHIFT DRESS



- 1/ Sun Yellow
- 2/ Fuchsia Pink
- 3/ Navy Blue~
- 4/ Deep Purple~

**Now introduced in seasonal rich  
autumn-winter hues-**



## IREOLÚ PEPLUM SHIFT DRESS

The LUXTLEY Lady embodies goodness, kindness and generosity in the Ireolú Peplum Dress. This best seller makes our ladies a stunner any day!

We've paired luxurious crêpe with delicate handcrafted chiffon ruffles on this ensemble.

The rich flounce on the peplum feature is sure to enhance her carriage. Perfect for every corporate setting, whilst letting her also transition into evening meetings and lifestyle outings after the work day.

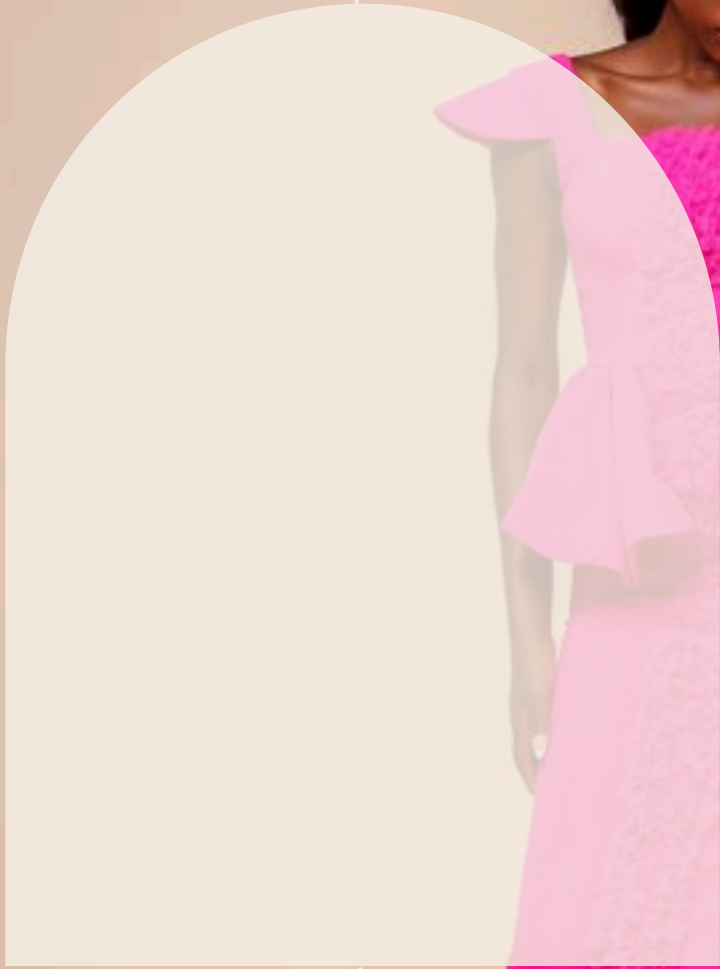














## ÀDÙNNI TWO-TONE DRESS

She steps into the room giving off the fragrance of sweetness.

She's firm, yet gentle & warm; strong, yet calm and reassuring. This beautiful two-tone dress features a unique right panel of layered flaps and handcrafted roses that give the presence of confident pleasantness with every step.

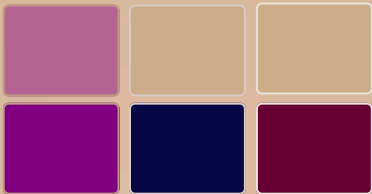




*L*



## COLOURWAYS



- 1/ Mauve (S) & Deep Purple~
- 2/ Tan (S) & Burgundy\*~
- 3/ Tan (S) & Navy Blue

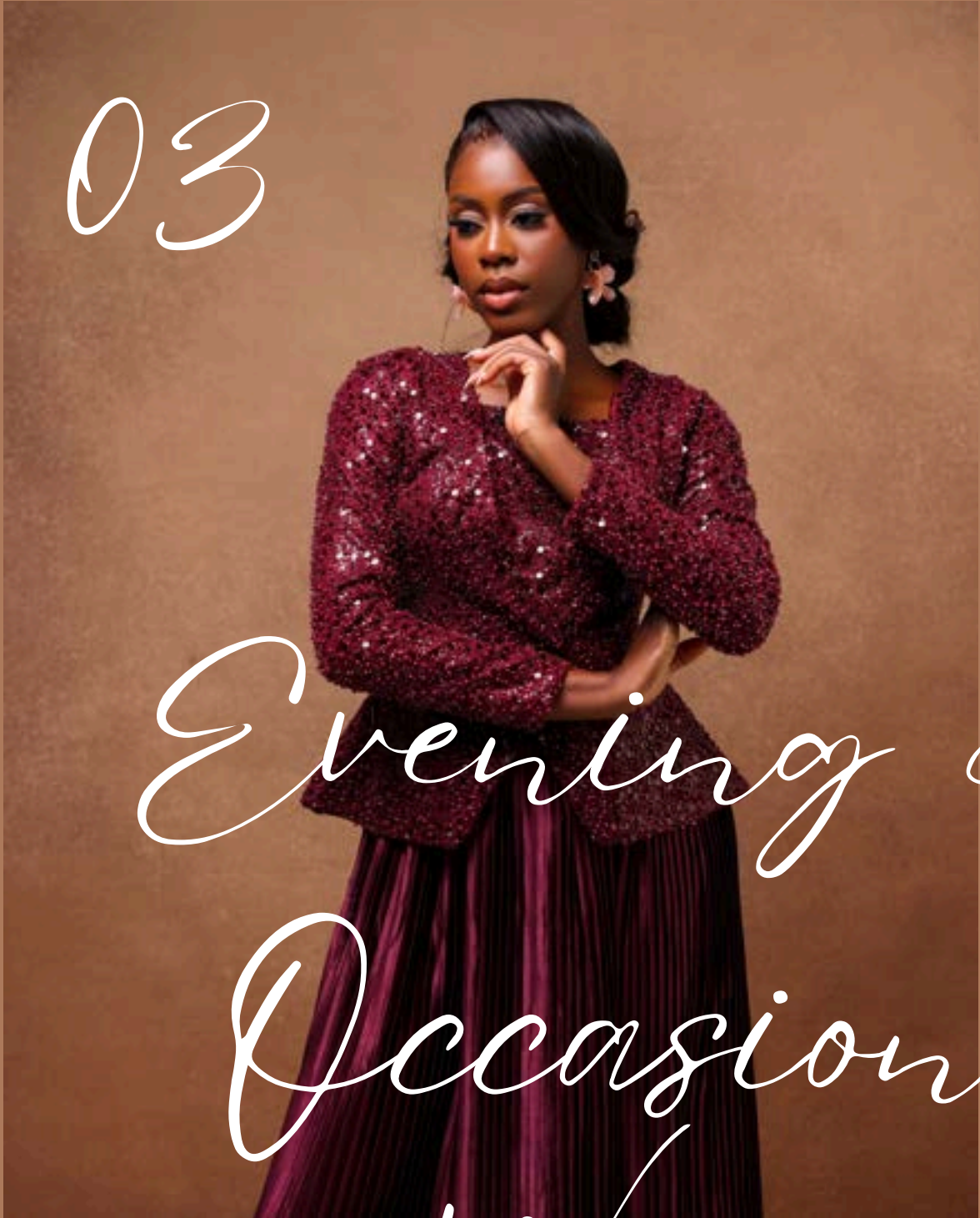
\*Stockist Exclusives

**Now introduced in seasonal rich autumn-winter hues**





03



Evening &  
Occasion  
Wear





**ÒKÌKÌOLÁ  
EMBELLISHED  
FLUTED  
JACKET & PLEATED SKIRT  
2-PIECE SET**

This 2-piece set comprises of a raw silk, hand embellished fluted jacket & a satin accordion pleat A-Line midi skirt.

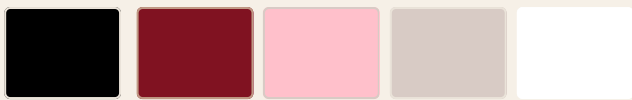
This LUXTLEY signature outfit is reserved for the discerning lady. It's been curated with pizzazz and inspired by the gracefulness and softness of every lady's veritable femininity.

Watch her move in her gentle strength and tender power, heralding the wealth and success that lie deep within her. This piece is a rich invitation to come into her own with Òkìkìolá: an attractive combination of energy and style; sparkle and vitality.



# ÒKÌKÌÒLÁ EMBELLISHED FLUTED JACKET & PLEATED SKIRT

## 2-PIECE SET



- 1/ Black\*
- 2/ Burgundy~
- 3/ Baby Pink
- 4/ Nude~
- 5/ White\*~

\*Stockist Exclusives

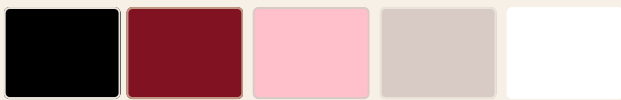
**Now introduced in seasonal rich  
autumn-winter hues-**





# ÒKÌKÌÒLÁ EMBELLISHED FLUTED JACKET & PLEATED SKIRT

## 2-PIECE SET



- 1/ Black\*
- 2/ Burgundy~
- 3/ Baby Pink
- 4/ Nude~
- 5/ White\*

\*Stockist Exclusives

**Now introduced in seasonal rich  
autumn-winter hues-**



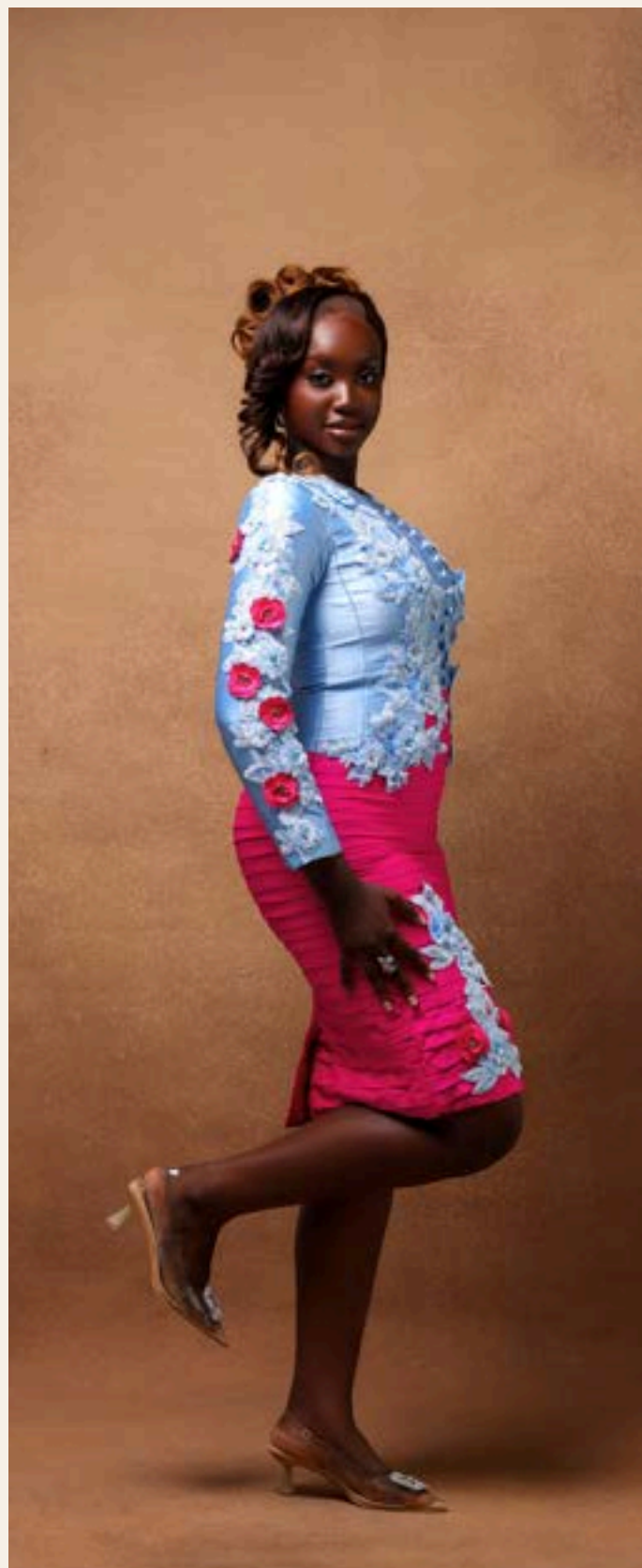




**OORE-ÒFÉ (HANNA)  
RUCHED DRESS**

She's always graceful, gentle,  
poised & elegant.

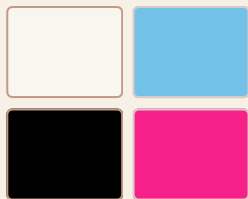
This Signature LUXTLEY piece  
gives off a fitted jacket and  
skirt suit illusion, hand finished  
with a soft 2-tone lace  
appliqué embellishment along  
the sleeves, front bodice &  
beautiful ruched skirt.



## OORE-ÒFÉ (HANNA) RUCHED DRESS

- 1/ Cream & Black\*~
- 2/ Baby Blue & Fuchsia Pink

\*Stockist Exclusives



Now introduced in seasonal rich  
autumn-winter hues~









## ÀLÁFIÀ EVENING DRESS

Structured with a ladylike, soft, hourglass silhouette, the Àláfíà evening dress is a great addition to any wardrobe. It provides understated elegance in Ivory or Champagne colours that will elevate the look for any special occasion. The LUXTLEY Lady will step out in calmness and serenity, being reminded that she's beautiful inside and out.

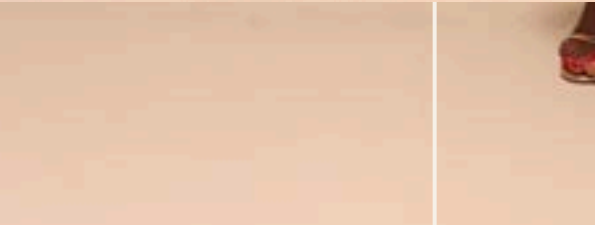




- 1/ Black\*~
- 2/ Champagne
- 3/ Ivory

\*Stockist  
Exclusives

**Now introduced in seasonal rich autumn-winter hues~**





## ÀYÀNFÉ EVENING DRESS

For the LUXTLEY Lady, nothing beats the added level of confidence that erupts from within when she knows that she's beloved, chosen and cherished so dearly.

The Àyànfé evening dress is delicately sculpted to remind her of this, as she steps out with her loved one.

Simplicity in elegance!









## ÀYÀNFÉ EVENING DRESS



- 1/ Grey\*~
- 2/ Cherry Pink
- 3/ Cornflower Blue

**Now introduced in seasonal rich  
autumn-winter hues~**



## WONUOLÁ TWO- WAY EVENING DRESS & DETACHABLE CAPE

Perfect for every queen. This beautifully handcrafted & embellished ensemble makes a truly chic statement for milestone birthdays, weddings, galas & award shows or grand corporate outings.

The dress by itself features a soft, fitted silhouette, feminine cap sleeves with sculpted shoulders to exaggerate & accentuate - an infusion of confidence. It has carefully crafted ruched detailing along the bodice and skirt, with centred embellishment along the core - all a testament to effortless beauty. The midi length cape is easily detached and provides a multifunctional two-way look.



**WONUOLÁ  
TWO-WAY  
EVENING DRESS  
& DETACHABLE  
CAPE**

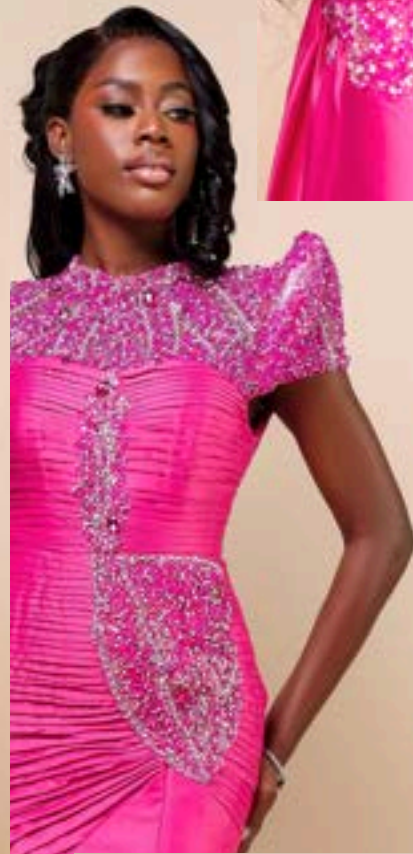


- 1/ Black\*~
- 2/ Cherry Pink
- 3/ Cornflower Blue

\*Stockist Exclusives

Now introduced in seasonal rich autumn-winter hues~







## AYÒ FIXED WRAP EVENING DRESS

Step into elegance with a delicate outfit. This fixed-wrap evening dress is crafted with ultimate comfort in mind. You're sure to shine with the off-shoulder pleats. The front slit is stitched shut to knee level for graceful movement.



## AYÒ FIXED-WRAP EVENING DRESS



- 1/ Ivory
- 2/ Champagne
- 3/ Cornflower Blue
- 4/ Golden Brown~

\*Stockist Exclusives

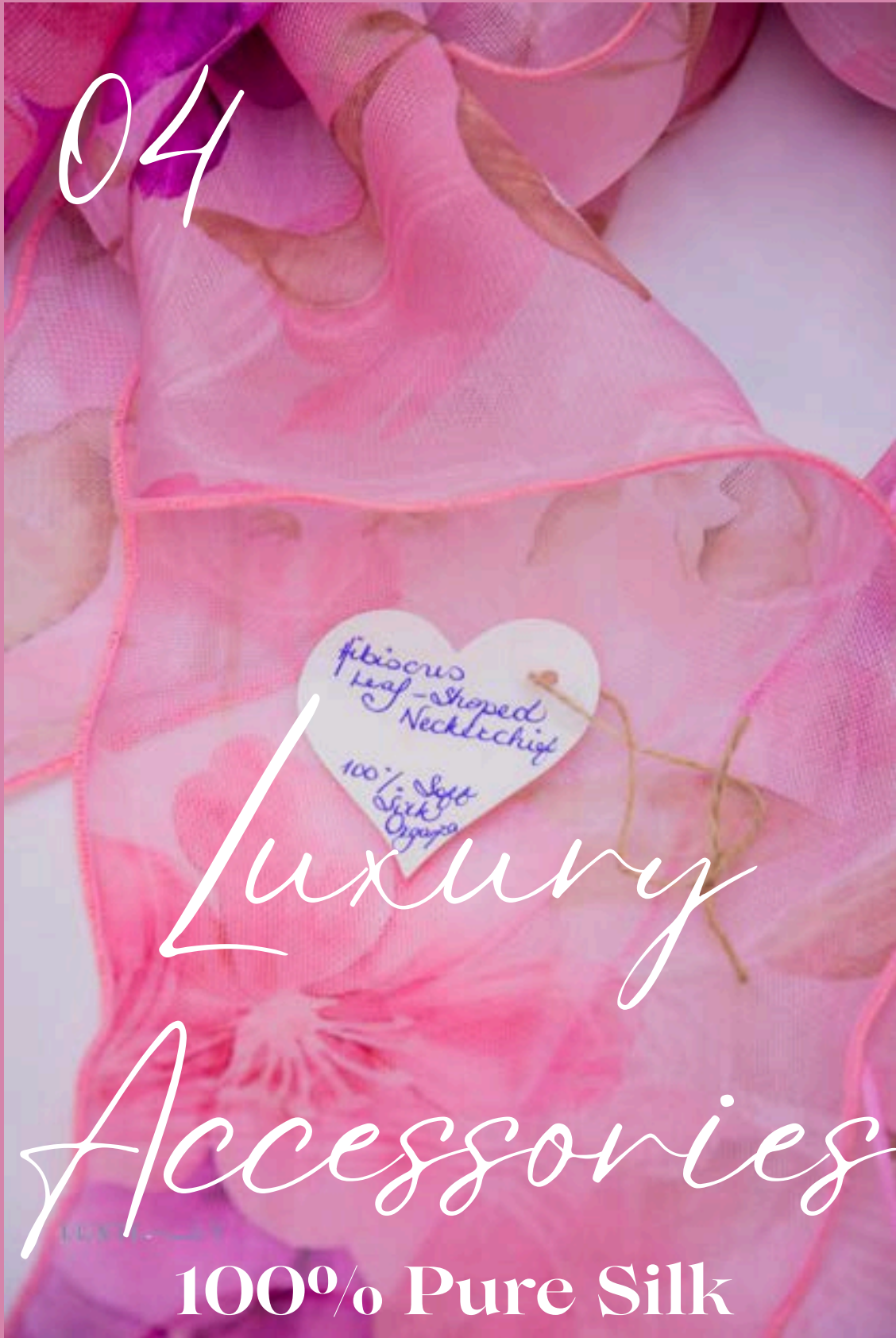
**Now introduced in seasonal rich  
autumn-winter hues~**







04



# Luxury Accessories

**100% Pure Silk**

The LUXTLEY collection of silk scarf designs transcend seasonal trends, making them perfect gifts to be treasured for years to come. Our pure silk fabrics are sourced from the finest designer Maison's in Europe.



# HIBISCUS NECKERCHIEF SCARF

---

## 100% PURE SILK ORGANZA

A feminine, elegant accompaniment to your wardrobe, our Pink Hibiscus Floral Silk Neckerchief Scarf is a charming, softly coloured accessory designed to elevate both day-to-day and special occasion ensembles.

Handcrafted from pure silk organza sourced from the best Luxury Maison's in Europe, the graceful soft print takes the wearer on a walk through a classic Nigerian garden, featuring beautifully illustrated pink and purple hibiscus flowers. The Hibiscus plant is native to several warm tropical and sub-tropical climates, including Nigeria. Celebrate and stun in style with this unique accessory. The gorgeous linear silk organza fabric has a pattern of fibres running through to create a subtle, linear sheen. It has a unique open weave that is very airy, soft and feather-light, but with the stiffness characteristic of organza. The large leaf shaped scarf is hand finished with decorative frilly lettuce hemmed edges.



## PRODUCT DETAILS

**Fabric Source:** Europe

**Scarf:** Hand Crafted In Nigeria

**Size:** Large

Length 60 inches (153cm)

Mid-Width 13 inches (33cm)

Ends Taper

Dimensions may vary slightly  
due to the hand finished  
nature of the scarf.

**Composition:** 100% Soft Silk  
Organza

**Finishing:** Hand finished, frilly  
lettuce edges



## HIBISCUS NECKERCHIEF SCARF

A feminine, elegant accompaniment to your wardrobe, our Pink Hibiscus Floral Silk Neckerchief Scarf is a charming, softly coloured accessory designed to elevate daytime, evening and special occasion ensembles.



100% Pure Silk  
Organza

- Multi coloured with shades of pink and purple
- Hibiscus flower pattern
- Leaf shaped
- Large Size





# BLUE WATERCOLOUR ABSTRACT SQUARE SCARF

---

**100% LUXURY  
POLYESTER SATIN**

An elegant, feminine, accompaniment to your wardrobe, our Blue Watercolour Abstract Square Scarf is a charming, highly versatile accessory designed to elevate both daytime and special occasion ensembles.

Handcrafted from luxurious satin sourced from the finest Maison's in Europe, the graceful print instantly delights, infusing the wearer with a joyful, calm and confident mood. The premium, soft-touch fabric has a shiny, silky look and is of high quality with a fluid drape.

Well-suited with corporate wear or for a more casual occasion, wear your blue satin scarf in an array of stunning ways, whether tied around your neck, wrist, in your hair or for accessorising your bag.

Make a bold statement with this brightly coloured scarf!



## PRODUCT DETAILS

**Fabric Source:** Europe

**Scarf:** Hand Crafted In Nigeria

**Size:** Medium

Length & Width 20 inches  
(50cm)

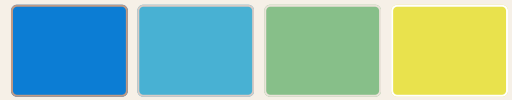
Dimensions may vary slightly  
due to the hand finished  
nature of the scarf.

**Composition:** 100% Luxury  
Polyester Satin

**Finishing:** Hand rolled,  
Machine stitched

# BLUE WATERCOLOUR ABSTRACT SQUARE SCARF

Handcrafted from luxurious satin sourced from the finest Maison's in Europe, the graceful print instantly delights, infusing the wearer with a joyful, calm and confident mood. The premium, soft-touch fabric has a shiny, silky look and is of high quality with a fluid drape.



100% Luxury  
Polyester Satin

- Multicoloured with shades of blue, green and yellow
- Abstract watercolour pattern
- Medium Size







# KIWI SILK TWILLY

---

## 100% PURE SILK TWILL

A feminine, elegant accompaniment to your wardrobe, our Kiwi Silk Twilly is a charming, highly versatile accessory designed to elevate both daytime and special occasion ensembles.

Handcrafted from pure silk twill, the gracefully striped print takes the wearer on a world tour. The history of striped fabric has seen it sail the seven seas and immortalised in sartorial splendour. It's one of versatility, durability, and uniformity. The kiwi green and blue colours are twinned with soft grey and white hues, suited to any smart casual or corporate look. The fabric is soft, lightweight and airy with a lovely sheen and distinct twill weave, intricately finished with angled edges.

Wear your silk twilly in an array of stunning ways, whether tied around your neck, wrist, in your hair or accessorising your bag. Make a bold statement with this seamless strip neckerchief!



## PRODUCT DETAILS

**Fabric Source:** Europe

**Scarf:** Hand Crafted In Nigeria

**Size:** Long

Length 39 inches (100cm)

Width 0.8 inch (2cm)

Dimensions may vary slightly  
due to the hand finished  
nature of the scarf.

**Composition:** 100% Pure Silk  
Twill

**Finishing:** Hand finished

# KIWI SILK TWILLY

This versatile silk Twilly can be worn in an array of stunning ways, whether tied around your neck, wrist, in your hair or accessorising your handbag. Make a bold statement with this seamless strip neckerchief!



## 100% Pure Silk Twill

- Multicoloured with kiwi green, blue, grey and white hues
- Striped fabric
- Long strip





**SPRING  
BAMBOO  
GARDEN  
SQUARE SCARF**

**100% PURE SILK  
HABOTAI**

A woman with dark hair and a white shirt with a floral scarf. She is looking to the side with a thoughtful expression. Her hand is resting on her shoulder, wearing a ring. The background is a plain, light color.

## PRODUCT DETAILS

**Fabric Source:** Europe

**Scarf:** Hand Crafted In Nigeria

**Size:** Medium

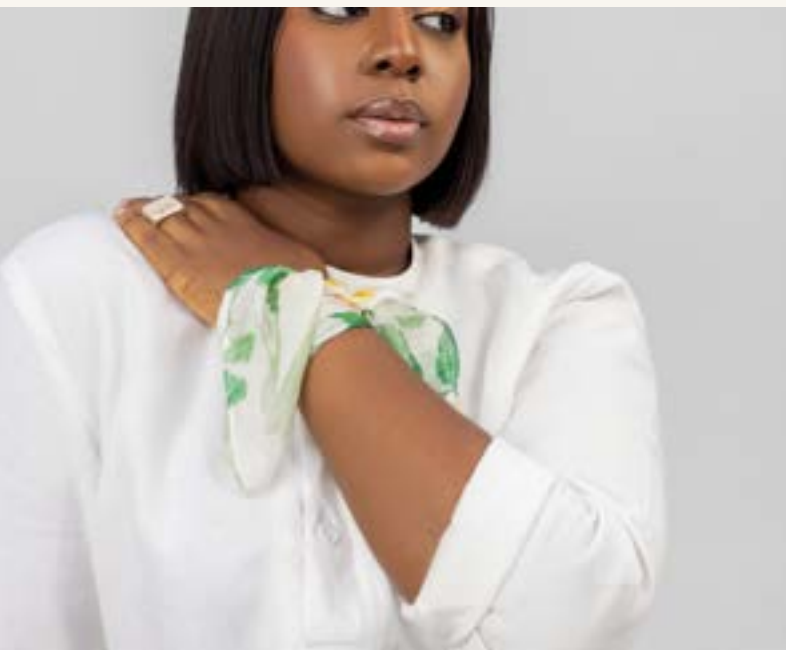
Length 18 inches (46cm)

Width 18 inches (46cm)

Dimensions may vary slightly due to the hand finished nature of the scarf.

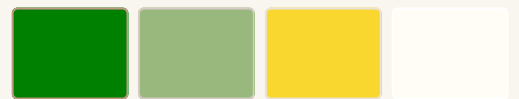
**Composition:** 100% Pure Silk  
Habotai

**Finishing:** Hand rolled,  
Machine stitched



## SPRING BAMBOO GARDEN SQUARE SCARF

This graceful print takes the wearer on a walk through an outdoor adventure, featuring bamboo stems with birds perched in spring greens on a warm cream background. The fabric is exceptionally soft, feather-light and sheer, with a subtle sheen and airy drape..



### 100% Pure Silk Habotai

- Multicoloured with shades of green, yellow and cream
- Spring garden pattern with birds, foliage and bamboo stems
- Medium Size

A woman with dark hair styled in an updo is shown from the back, wearing a red sequined dress. A teal rectangular overlay is positioned in the center of the image, containing white text. The background is a plain, light brown wall.

05

Connect  
&

Partner

~

# FOLLOW — US —



LUXTLEY COUTURE

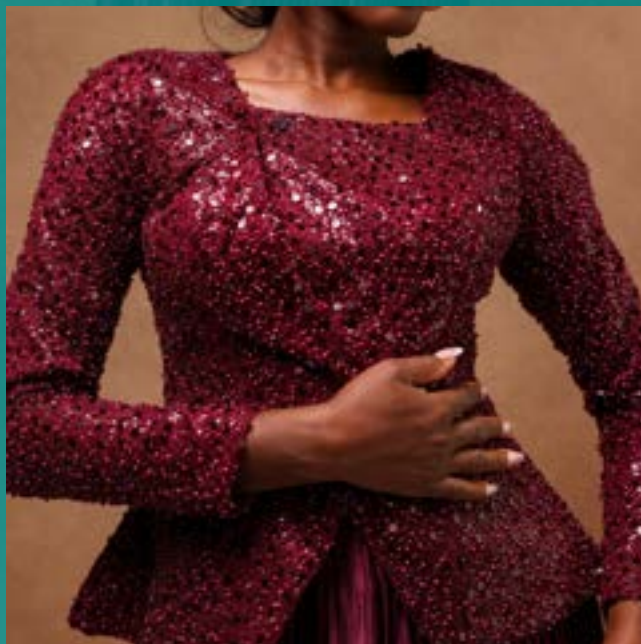


@LUXTLEY

# WHOLESALE ORDERS



Email: [atelier@luxtley.com](mailto:atelier@luxtley.com)



WhatsApp: +234 (0) 903 184 7070

+44 (0) 7786 151 325



# LUXTL *Y*<sup>®</sup> *Size Chart*

| SIZE CHART |     |    |    |    |    |    |     |
|------------|-----|----|----|----|----|----|-----|
| UK         | 6   | 8  | 10 | 12 | 14 | 16 | 18  |
| US         | 2   | 4  | 6  | 8  | 10 | 12 | 14  |
| LUX-Int    | XXS | XS | S  | M  | L  | XL | XXL |
| Bust       | 32  | 34 | 36 | 38 | 40 | 42 | 44  |
| Waist      | 26  | 28 | 30 | 32 | 34 | 36 | 38  |
| Hips       | 36  | 38 | 40 | 42 | 44 | 46 | 48  |

All measurements are in inches.  
Our standard for apparel is UK sizing.

Sizing can be adjusted to suit regional preferences during production.

International stockists should please discuss specific requirements.

[www.luxtley.com](http://www.luxtley.com)

©2025 luxtley

— LUXTL & Y —

*Embrace Your Femininity*