

nomads
LIVE • BREATHE • WEAR

AUTUMN WINTER 25



AUTUMN WINTER 25

/06

SUNDOWN



/16

HARVEST MOON



/26

AUTUMN BY THE SEA



/36

NORDIC WINTER



/48

AFTER DARK



/60

TIGHTS



INTRODUCTION

WELCOME TO THE LATEST EDITION OF OUR AUTUMN WINTER COLLECTION!

As we step into the season, we are thrilled to present a curated selection of fresh designs, innovative styles, and brand-new trends. Our new capsule collections show a blend of timeless styles and modern flair, offering you a variety of options that cater to every occasion and personal style.

In this collection you will find a combination of statement pieces and versatile additions flawlessly transitioning from day to night. With focus on fresh and luxurious fabrics, bold colours, this collection is functional and fashionable. This season we are happily repeating our popular chunky cord in fresh and vibrant colours, adding more options for you to choose from our extensive knitwear collection, along with some new woven viscose prints and a dressy jacquard.

We still proudly continue to be a GOTS certified company so you can be sure to find our ever-popular organic cotton range this season as well.

The Nomads Team x

CONTACT US

E: info@nomadsclothing.co.uk
W: nomadsclothingwholesale.com
T: (0044) 1566 777338



OUR NEW CAPSULE COLLECTIONS SHOW A BLEND OF **TIMELESS STYLES AND MODERN FLAIR**, OFFERING YOU A VARIETY OF OPTIONS.

OUR VALUES

WE ARE ALWAYS LOOKING FOR NEW WAYS TO STRENGTHEN OUR RELATIONSHIPS AND OPERATE RESPONSIBLY. BY WORKING CLOSELY WITH EACH OF OUR PRODUCERS, WE CAN CONTINUE TO ENSURE OUR HIGH STANDARDS ARE BEING MET.

Ever since we embarked on the Nomads journey in 1989, we've been pioneers of the trade not aid ethos. We feel proud to have nurtured valuable, long-term business partnerships in India and have carefully developed a supply chain of like-minded people who share our ethos of trading responsibly.

We ask all of our suppliers to sign our Code of Conduct and expect complete transparency throughout the production process. All except the very smallest of our producers have a SEDEX certification, which means they go beyond the levels of ethical conduct required by law. Some of them are also GOTS certified. We personally know where our products are made and have a good relationship with each factory.

Our India based production manager, Manojj, visits our Indian suppliers regularly throughout the year, even when our team in the UK can't get there, to ensure that our standards are being met.



ROOTED IN SLOW FASHION AND CLASSIC DESIGNS, WE STRIVE TO SOURCE OUR FABRICS AS RESPONSIBLY AND AS NATURAL AS POSSIBLE. OUR COMMITMENT TO RESPONSIBLE FASHION MEANS YOU FEEL BETTER ABOUT WHAT YOU WEAR.

OUR FABRICS

FABRICS THIS SEASON

ORGANIC COTTON

Organic is our preferred choice when it comes to cotton as it is grown without the use of harmful elements – kindest to PLANET, PRODUCERS & PEOPLE who wear it. We are proud to be GOTS certified – it is the GOLD standard when it comes to the sustainable processing of textiles worldwide.

ORGANIC COTTON & ALPACA

This is a perfect blend of two extraordinary fibres to keep you cosy throughout the season. A mix of Peruvian Alpaca and Organic Cotton. Natural, breathable and biodegradable. Alpaca is up to 3 times warmer than sheep wool and is hypoallergenic. Easily pair with our autumn-inspired prints for a layered look.

ORGANIC COTTON AND WOOL

This season our 80% Organic cotton and 20% RWS certified wool range includes a cable knit jumper, ribbed cardigan and knitted vest.

LENZING ECOVERO

Lenzing EcoVero™ fibres make beautiful jersey and woven fabrics that have a soft drape. EcoVero™ is made using sustainable wood pulp from certified and controlled wood sources and is produced to high ecological standards and has been awarded the EU Ecolabel for environmental excellence.

LENZING TENCEL™ MODAL

Supersoft our brushed terry jersey in eco-friendly Lenzing Modal is really cosy to wear. Naturally hypoallergenic fibres are extracted from sustainably grown wood pulp from FSC-certified forests and produced using a unique closed-loop system which recovers and reuses the solvents used, minimising the environmental impact of production.

BAMBOO COTTON JERSEY

A cosy thicker jersey perfect for the winter months. Both the Bamboo and cotton are grown in India, and this responsible bamboo is processed in a Closed Loop system. The fabric is cosy and soft as well as sweat wicking, breathable and antibacterial.

SUNDOWN



/ OXFORD / APRICOT / SCARLET



THERE IS A **STRONG ARTISTIC INFLUENCE** IN OUR FIRST STORY OF THE AUTUMN/WINTER SEASON. FEATURING OUR MATISSE AND ETCHING PRINTS SHOWN ABOVE.



INTRODUCING AN EXCITING NEW PIECE TO THE COLLECTION, OUR ALPACA/WOOL MIX COAT, WITH ITS **EYE-CATCHING DESIGN AND EVERYDAY, TAILORED STYLE.**





ET3177 / Tunic Dress
100% Organic Cotton Jersey
Oxford / Sizes 8-20



CH2191 / Open Collar Midi Dress
100% Cotton Chambray
Chambray / Sizes 8-20



ET0308 / Scarf
100% Viscose Gauze
Oxford / One Size

CH1087 / Elastic Hem Trouser
100% Cotton Chambray
Chambray / Sizes 8-20



ET4185 / Top
100% Organic Cotton Jersey
Oxford / Sizes 8-20

CH1087 / Elastic Hem Trouser
100% Cotton Chambray
Chambray / Sizes 8-20



ET2199 / Tiered Dress
100% Organic Cotton Jersey
Oxford / Sizes 8-20



JP4232 / Collared Jersey Top
100% GOTS Organic Cotton Jersey
Oxford / Sizes 8-20



JP4064 / Round Neck Top
100% GOTS Organic Cotton Jersey
Oxford / Sizes 8-20



MT2219 / Puff Sleeve Midi Dress
100% Viscose Twill
Oxford / Sizes 8-20



JP4064 / Round Neck Top
100% GOTS Organic Cotton Jersey
Apricot / Sizes 8-20

MT8059 / Printed Skirt
100% Viscose Twill
Oxford / Sizes 8-20



MT2204 / Shirt Dress
100% Viscose Twill
Oxford / Sizes 8-20



MT4227 / Gathered Neck Top
100% Viscose Twill
Oxford / Sizes 8-20



JP4064 / Round Neck Top
100% GOTS Organic Cotton Jersey
Ivory / Sizes 8-20



KT7094 / Button Through Cardi
80% Organic Cotton, 20% Wool
Thunder / Sizes S,M,L

THIS PRINT PLAYS HOMAGE TO HENRI MATISSE AND HIS PAPER CUT
OUT'S WITH THE **BOLD AND COLOURFUL NATURE** OF THIS DESIGN.



QW6524 / Wool Coat
50% Recycled Polyester,
42% Wool, 5% Alpaca, 3% Others
Rust / Sizes 8-20



MC3170 / Sweatshirt Tunic Dress
70% Lenzing Modal, 25% Cotton, 5% Elastane
Space / Sizes 8-20



IV3179 / Pintuck Tunic Dress
100% Viscose
Scarlet / Sizes 8-20



IV0318 / Scarf
100% Viscose Gauze
Scarlet / One Size

IV4235 / Easy Top
100% Viscose
Scarlet / Sizes 8-20



MC4223 / Sweatshirt Top
70% Lenzing Modal, 25% Cotton, 5% Elastane
Space / Sizes 8-20

MC1091 / Cosy Trouser
70% Lenzing Modal, 25% Cotton, 5% Elastane
Space / Sizes 8-20



IV2195 / Sweetheart Midi
100% Viscose
Scarlet / Sizes 8-20



OUR 80% ORGANIC COTTON & 20% RWS CERTIFIED WOOL KNITWEAR INCLUDES OUR CABLE KNIT JUMPERS, ACCESSORIES AND MORE!

KT0212 / Striped Knitted Hat
80% Organic Cotton, 20% RWS Wool
Multi / One Size

KT0327 / Striped Knitted Scarf
80% Organic Cotton, 20% RWS Wool
Multi / One Size

KT0503 / Striped Knitted Fingerless Gloves
80% Organic Cotton, 20% RWS Wool
Multi / One Size



JP4232 / Collared Jersey Top
100% GOTS Organic Cotton Jersey
Scarlet / Sizes 8-20



KT7093 / Cable Knit Jumper
80% Organic Cotton, 20% RWS Wool
Thunder / Sizes S,M,L



KT7094 / Button Through Cardi
80% Organic Cotton, 20% RWS Wool
Thunder / Sizes S,M,L



KT7098 / Striped Jumper
80% Organic Cotton, 20% RWS Wool
Multi / Sizes S,M,L



PE4248 / Shirt
100% Cotton Shirting
White / Sizes 8-20



KT7097 / Knitted Vest
80% Organic Cotton, 20% RWS Wool
Thunder / Sizes S,M,L



KT0212 / Plain Knitted Hat
KT0327 / Plain Knitted Scarf
KT0503 / Plain Knitted Fingerless Gloves
80% Organic Cotton, 20% RWS Wool
Thunder / One Size



JP4064 / Round Neck Top
100% GOTS Organic Cotton Jersey
Scarlet / Sizes 8-20

HARVEST MOON



OUR BRIGHT AND COLOURFUL STORY THAT TAKES THOSE SUMMER BRIGHTS AND TRANSITIONS THEM INTO AUTUMNAL HUES.



WITH OUR WARM COLOURS LIKE FIREWORK AND PUMPKIN AND OUR BOLD BLOOM FLORAL, THIS ECLECTIC STORY WILL ENSURE THERE ARE **STATEMENT PIECES** IN YOUR **WARDROBE** THIS WINTER.

- / ARCTIC
- / PLUM
- / PUMPKIN



RW7095 / Block Stripe Edge to Edge Cardi
 53% Recycled Polyester, 6% Wool,
 30% Polyamide, 10% Polyester, 1% Elastane
 Brights / Sizes S,M,L

RW7096 / Block Stripe Longline Jumper
 53% Recycled Polyester, 6% Wool,
 30% Polyamide, 10% Polyester, 1% Elastane
 Brights / Sizes S,M,L

RE7096 / Longline Jumper
 49% Recycled Poly, 18% Nylon, 13% Acrylic,
 11% Polyester, 8% Wool, 1% Elastane
 Grey / Sizes S,M,L

RJ4249 / Rib Polo Neck Top
 95% Organic Cotton, 5% Spandex
 Rust / Sizes 8-20

RE7095 / Edge to Edge Cardi
 49% Recycled Poly, 18% Nylon, 13% Acrylic,
 11% Polyester, 8% Wool, 1% Elastane
 Grey / Sizes S,M,L

RJ2194 / Rib Jersey Midi Dress
 95% Organic Cotton, 5% Spandex
 Rust / Sizes 8-20



BL3171 / Gathered Front Tunic Dress
67% Bamboo, 28% Cotton, 5% Elastane
Space / Sizes 8-20

CD2186 / V Neck Midi Dress
100% Cotton Drill
Space / Sizes 8-20

BL2200 / Printed Midi Dress
67% Bamboo, 28% Cotton, 5% Elastane
Space / Sizes 8-20

BL4230 / Drapey Top
67% Bamboo, 28% Cotton, 5% Elastane
Space / Sizes 8-20

KT7094 / Button Through Cardi
80% Organic Cotton, 20% Wool
Arctic / Sizes S,M,L

CD1088 / Wide Leg Trouser
100% Cotton Drill
Space / Sizes 8-20



LAYERING INTO THIS STORY WE HAVE OUR NEW CABLE KNITWEAR IN FIERY PUMPKIN AND COSY CARDI IN COOL ARCTIC THAT WILL COMPLIMENT OUR COLOURFUL PRINTED STYLES BEAUTIFULLY.

KT7093 / Cable Knit Jumper
80% Organic Cotton, 20% RWS Wool
Pumpkin / Sizes S,M,L

KT7093 / Cable Knit Jumper
80% Organic Cotton, 20% RWS Wool
Arctic / Sizes S,M,L

KT7093 / Cable Knit Jumper
80% Organic Cotton, 20% RWS Wool
Arctic / Sizes S,M,L

KT7097 / Knitted Vest
80% Organic Cotton, 20% RWS Wool
Arctic / Sizes S,M,L

KT7097 / Knitted Vest
80% Organic Cotton, 20% RWS Wool
Arctic / Sizes S,M,L

KT7094 / Button Through Cardigan
80% Organic Cotton, 20% RWS Wool
Arctic / Sizes S,M,L

KT7094 / Button Through Cardigan
80% Organic Cotton, 20% RWS Wool
Pumpkin / Sizes S,M,L

CD1109 / Cropped Trousers
100% Cotton Drill
Space / Sizes 8-20

PE4248 / Shirt
100% Cotton Shirting
White / Sizes 8-20

CD1088 / Wide Leg Trousers
100% Cotton Drill
Space / Sizes 8-20



OUR POPULAR CHUNKY CORD IS BACK! AVAILABLE IN FOUR SUMPTUOUS COLOURS; PLUM (ABOVE) ECRU, ROSE AND BLACK.

NR3176 / Gathered Cuff Tunic Dress
100% Cotton Chunky Cord
Plum / Sizes 8-20

NR6030 / Cord Jacket
100% Cotton Chunky Cord
Plum / Sizes 8-20

NR8051 / Pocket Mini Skirt
100% Cotton Chunky Cord
Plum / Sizes 8-20

ET2199 / Tiered Dress
100% Organic Cotton Jersey
Multi / Sizes 8-20

ET4185 / Top
100% Organic Cotton Jersey
Multi / Sizes 8-20

NR1104 / Pocket Cropped Trouser
100% Cotton Chunky Cord
Plum / Sizes 8-20

ET0308 / Scarf
100% Viscose Gauze
Multi / One Size

ET4185 / Top
100% Organic Cotton Jersey
Multi / Sizes 8-20

ET3177 / Tunic Dress
100% Organic Cotton Jersey
Multi / Sizes 8-20

AUTUMN BY THE SEA

OUR THIRD STORY COLOUR PALETTE CELEBRATES AUTUMN AND ITS TRANSFORMATION OF THE SEASONS, TAKING INSPIRATION FROM THE OUTDOORS WITH OUR **GOLDEN HUES AND EARTHY PINKS**, BRINGING WARMTH TO THE CHILLIER DAYS.



/ PARFAIT

/ ROSE

/ BUFF



RETURNING THIS SEASON IS OUR **BEAUTIFUL CHUNKY CORD** IN OUR NEW, EASY GATHERED CUFF TUNIC DRESS SHAPE, BEST-SELLING CROPPED TROUSER AND NEW JACKET.



100% LENZING ECOVERO



NR4234 / Cord Shirt
100% Cotton Chunky Cord
Rose / Sizes 8-20



DL4214 / Jersey Shirt
100% Lenzing Ecovero Jersey
Ecru / Sizes 8-20



NR3176 / Gathered Cuff Tunic Dress
100% Cotton Chunky Cord
Rose / Sizes 8-20



DL4249 / Polo Neck Top
100% Lenzing Ecovero Jersey
Ecru / Sizes 8-20

NR8051 / Pocket Mini Skirt
100% Cotton Chunky Cord
Rose / Sizes 8-20



DL3146 / Tunic Dress
100% Lenzing Ecovero Jersey
Ecru / Sizes 8-20



NR6030 / Cord Jacket
100% Cotton Chunky Cord
Rose / Sizes 8-20

NR1104 / Pocket Cropped Trouser
100% Cotton Chunky Cord
Rose / Sizes 8-20



OUR QUILTED JACKET IS BACK IN A SOPHISTICATED NEW COLOUR
 - WARM YET LIGHTWEIGHT. MADE FROM 35% ORGANIC COTTON AND
 65% RECYCLED POLYESTER - REDUCING THE IMPACT ON THE PLANET.

KT0212 / Plain Knitted Hat
 80% Organic Cotton, 20% RWS Wool
 Sand / One Size

KT0327 / Plain Knitted Scarf
 80% Organic Cotton, 20% RWS Wool
 Sand / One Size

KT0503 / Plain Knitted Fingerless Gloves
 80% Organic Cotton, 20% RWS Wool
 Sand / One Size

QL6036 / Quilted Jacket
 65% Recycled Polyester, 35% Organic Cotton
 (lining 100% Recycled Polyester)
 Buff / Sizes 8-20

KT7094 / Button Through Cardigan
 80% Organic Cotton, 20% RWS Wool
 Sand / Sizes S,M,L

KT7097 / Knitted Vest
 80% Organic Cotton, 20% RWS Wool
 Sand / Sizes S,M,L

KT7093 / Cable Knit Jumper
 80% Organic Cotton, 20% RWS Wool
 Sand / Sizes S,M,L

CD6038 / Longline Jacket
 100% Cotton Drill
 Parfait / Sizes 8-20

CD1109 / Cropped Trouser
 100% Cotton Drill
 Parfait / Sizes 8-20



KT7094 / Button Through Cardi
80% Organic Cotton, 20% RWS Wool
Sand / Sizes S,M,L

CD2186 / V Neck Midi Dress
100% Cotton Drill
Buff / Sizes 8-20

IV2195 / Sweetheart Midi Dress
100% Viscose
Buff / Sizes 8-20

IV4235 / Easy Top
100% Viscose
Buff / Sizes 8-20

CD6038 / Longline Jacket
100% Cotton Drill
Buff / Sizes 8-20

IV3179 / Pintuck Tunic Dress
100% Viscose
Buff / Sizes 8-20

CD1088 / Wide Leg Trouser
100% Cotton Drill
Buff / Sizes 8-20

CD1109 / Cropped Trouser
100% Cotton Drill
Buff / Sizes 8-20

IV0318 / Scarf
100% Viscose Gauze
Buff / One Size



OUR QUILTED COAT RETURNS FOR AW25 IN A NEW DUSKY PINK COLOUR. WE HAVE USED RECYCLED FIBRES IN BOTH OUR COATS AND KNITWEAR, PERFECT FOR LAYERING TOGETHER FOR OUTDOOR ADVENTURES WHILST REDUCING THE IMPACT ON OUR PLANET.



QL6522 / Quilted Coat
100% Recycled Polyester
Rose / Sizes 8-20

RS7096 / Striped Longline Jumper
59% Recycled Polyester, 8% Wool,
21% Polyamide, 11% Polyester, 1% Elastane
Multi / Sizes S,M,L

RS0502 / Striped Gloves
59% Recycled Polyester, 8% Wool,
21% Polyamide, 11% Polyester, 1% Elastane
Multi / One Size

RS0212 / Striped Hat
59% Recycled Polyester, 8% Wool,
21% Polyamide, 11% Polyester, 1% Elastane
Multi / One Size

RS0327 / Striped Scarf
59% Recycled Polyester, 8% Wool,
21% Polyamide, 11% Polyester, 1% Elastane
Multi / One Size

NORDIC WINTER

THE COSY AND UNDERSTATED STORY, NORDIC WINTER. WITH THE EARTHY TONES SUCH AS JUNIPER AND BASIL SITTING ALONGSIDE THE ICY COLOURS OF PARFAIT AND ARCTIC, THIS COLLECTION REFLECTS OUR INSPIRATION FROM SCANDINAVIAN NATURE.



OUR MATISSE PRINT PLAYS HOMAGE TO HENRI MATISSE AND HIS **BOLD AND COLOURFUL DESIGNS**, WHICH PAIRS BEAUTIFULLY WITH OUR ORGANIC COTTON JACKET.

/ NORDIC / JUNIPER / FRENCH NAVY



JP4064 / Round Neck Top
100% GOTS Organic Cotton Jersey
Oxford / Sizes 8-20

MT4227 / Gathered Neck Top
100% Viscose Twill
Pea / Sizes 8-20

MT2219 / Puff Sleeve Midi Dress
100% Viscose Twill
Pea / Sizes 8-20

HJ6037 / Jersey Jacket
92% GOTS Organic Cotton Jersey, 8% Elastane
Midnight / Sizes 8-20

MT2204 / Shirt Dress
100% Viscose Twill
Pea / Sizes 8-20

MT8059 / Printed Skirt
100% Viscose Twill
Pea / Sizes 8-20

HJ1093 / Slim Leg Trouser
92% GOTS Organic Cotton Jersey, 8% Elastane
Midnight / Sizes 8-20



RJ2194 / Rib Jersey Midi Dress
95% Organic Cotton, 5% Spandex
Basil / Sizes 8-20

NR6030 / Cord Jacket
100% Cotton Chunky Cord
Ecru / Sizes 8-20

RE7095 / Edge to Edge Cardi
49% Recycled Polyester, 18% Nylon, 13% Acrylic,
11% Polyester, 8% Wool, 1% Elastane
Juniper / Sizes S,M,L

JP4226 / 3/4 Sleeve Jersey Top
95% GOTS Organic Cotton, 5% Elastane
Juniper / Sizes 8-20

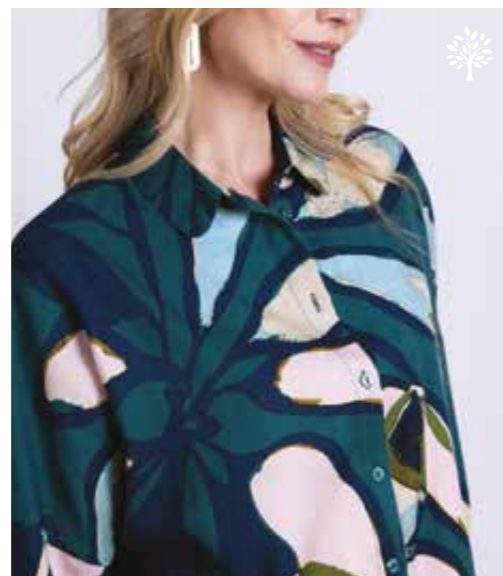
JP1050 / Yoga Trouser
95% GOTS Organic Cotton, 5% Elastane
Juniper / Sizes 8-20

RJ4249 / Rib Polo Neck Top
95% Organic Cotton, 5% Spandex
Basil / Sizes 8-20

NR1104 / Pocket Cropped Trouser
100% Cotton Chunky Cord
Ecru / Sizes 8-20

NR4234 / Cord Shirt
100% Cotton Chunky Cord
Ecru / Sizes 8-20

JP3174 / Long Sleeve Tunic Dress
95% GOTS Organic Cotton, 5% Elastane
Juniper / Sizes 8-20



OUR BEAUTIFUL AND IMPACTFUL STUDIO PRINT IS THE HERO OF THIS STORY, PRINTED ONTO OUR TEXTURED TENCEL AND FEATURING IN A NEW BUBBLE HEM MIDI DRESS, OVERSIZED SHIRT AND MORE!

HJ4184 / Dropped Shoulder Top
92% GOTS Organic Cotton Jersey,
8% Elastane
Midnight / Sizes 8-20

SD8061 / Midi Skirt
100% Textured Tencel
Nordic / Sizes 8-20

SD4221 / Oversized Shirt
100% Textured Tencel
Nordic / Sizes 8-20

SD3169 / Collared Tunic Dress
100% Textured Tencel
Nordic / Sizes 8-20

HJ2198 / Jersey Pinafore Dress
92% GOTS Organic Cotton Jersey,
8% Elastane
Midnight / Sizes 8-20

SD2190 / Bubble Midi Dress
100% Textured Tencel
Nordic / Sizes 8-20

SD0308 / Scarf
100% Viscose Gauze
Nordic / One Size

SD2190 / Bubble Midi Dress
100% Textured Tencel
Nordic / Sizes 8-20



LC3178 / Gathered Tunic Dress
100% Woven Ecovero Viscose
Oxford / Sizes 8-20



LC3178 / Gathered Tunic Dress
100% Woven Ecovero Viscose
Oxford / Sizes 8-20



AP7090 / Cosy Round Neck Jumper
83% Organic Cotton, 17% Alpaca
Lime / Sizes S,M,L



AP7091 / Cardi
83% Organic Cotton, 17% Alpaca
Lime / Sizes S,M,L



LC4225 / Ruched Front Long Top
100% Woven Ecovero Viscose
Oxford / Sizes 8-20



LC2192 / Frill Midi Dress
100% Woven Ecovero Viscose
Oxford / Sizes 8-20



KT7093 / Cable Knit Jumper
80% Organic Cotton, 20% Wool
Sand / Sizes S,M,L

CD1088 / Wide Leg Trousers
100% Cotton Drill
Space / Sizes 8-20

KT7094 / Button Through Cardigan
80% Organic Cotton, 20% Wool
Sand / Sizes S,M,L

CD1109 / Cropped Trousers
100% Cotton Drill
Space / Sizes 8-20

KT7097 / Knitted Vest
80% Organic Cotton, 20% Wool
Sand / Sizes S,M,L

CD2186 / V Neck Midi Dress
100% Cotton Drill
Space / Sizes 8-20

AFTER DARK

WE COME TO THE LAST STORY WITH AN IMPACTFUL COLOUR EDIT, STAYING TRUE TO THE SEASON WITH **BOLD REDS AND TIMELESS BLACK AND ALABASTER** THAT MAKE FOR A STATEMENT COLLECTION FOR THE FESTIVE PERIOD.



/ BLACK / JAM / ALABASTER



OUR BLACK ALPACA/COTTON CARDI IS A GREAT INVESTMENT PIECE FOR THE SEASON.



VJ4228 / Jacquard Shirt
100% Viscose Jacquard
Black / Sizes 8-20

VJ8058 / Jacquard Skirt
100% Viscose Jacquard
Black / Sizes 8-20

AM2206 / Puff Sleeve Dress
100% Viscose
Burgundy / Sizes 8-20

VJ2197 / Jacquard Midi Dress
100% Viscose Jacquard
Black / Sizes 8-20

AM4236 / Smock Top
100% Viscose
Burgundy / Sizes 8-20

AM2196 / Tiered Midi Shirtdress
100% Viscose
Burgundy / Sizes 8-20



AM4236 / Smock Top
100% Viscose
Black / Sizes 8-20

AM1103 / Pleat Front Trouser
100% Viscose
Black / Sizes 8-20



AM4236 / Smock Top
100% Viscose
Black / Sizes 8-20

PV1110 / Tie Belt Trouser
100% Viscose Twill
Black / Sizes 8-20



AM2206 / Puff Sleeve Dress
100% Viscose
Black / Sizes 8-20

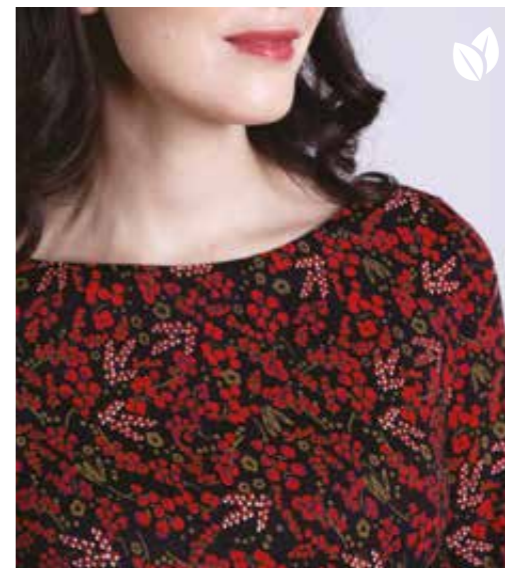


JP4226 / 3/4 Sleeve Jersey Top
95% GOTS Organic Cotton, 5% Elastane
Black / Sizes 8-20



AM2196 / Tiered Midi Shirtdress
100% Viscose
Black / Sizes 8-20

OUR HERO PRINT AMARYLLIS IN WOVEN VISCOSE, COMING IN TWO COLOURWAYS, FEATURES IN OUR TIERED SHIRTDRESS AND EFFORTLESSLY COOL WIDE LEG TROUSERS AND SMOCK TOP.



NR6030 / Cord Jacket
100% Cotton Chunky Cord
Black / Sizes 8-20

BP2193 / Puff Sleeve Maxi Dress
100% Lenzing Ecovero Jersey
Jam / Sizes 8-20

NR2203 / Cord Midi Dress
100% Cotton Chunky Cord
Black / Sizes 8-20

BP4093 / Boat Neck Top
100% Lenzing Ecovero Jersey
Jam / Sizes 8-20

NR3176 / Gathered Cuff Tunic Dress
100% Cotton Chunky Cord
Black / Sizes 8-20

BP3171 / Gathered Front Tunic Dress
100% Lenzing Ecovero Jersey
Jam / Sizes 8-20

NR1104 / Pocket Cropped Trouser
100% Cotton Chunky Cord
Black / Sizes 8-20

JP1043 / Leggings
95% GOTS Organic Cotton, 5% Elastane
Black / Sizes 8-20



WE HAVE ADDED IN AN **ELEGANT BLACK AND ALABASTER FLORAL EMBROIDERY**, IN STYLES THAT WILL CERTAINLY BE ONES TO REMEMBER.

BP2090 / Shirt Dress
100% Lenzing Ecovero Jersey
Alabaster / Sizes 8-20

JP4064 / Round Neck Top
100% GOTS Organic Cotton Jersey
Scarlet / Sizes 8-20

BP4093 / Boat Neck Top
100% Lenzing Ecovero Jersey
Alabaster / Sizes 8-20

EM4229 / Embroidered Tea Blouse
100% Viscose Twill
Black / Sizes 8-20

BP4214 / Jersey Shirt
100% Lenzing Ecovero Jersey
Alabaster / Sizes 8-20

JP4232 / Collared Jersey Top
100% GOTS Organic Cotton Jersey
Scarlet / Sizes 8-20

EM2205 / Embroidered Midi Dress
100% Viscose Twill
Black / Sizes 8-20



RW7089 / Fairisle Jumper
53% Recycled Polyester, 6% Wool, 30% Polyamide,
10% Polyester, 1% Elastane
Ivory / Sizes S,M,L

JP1050 / Yoga Trouser
95% GOTS Organic Cotton, 5% Elastane
Black / Sizes 8-20



AP0212 / Knitted Hat
83% Organic Cotton, 17% Alpaca
Black / One Size

AP0503 / Knitted Gloves
83% Organic Cotton, 17% Alpaca
Black / One Size



FC7092 / Ribbed Sleeve Jumper
100% Organic Cotton
Ivory / Sizes S,M,L

AP7091 / Cardigan
83% Organic Cotton, 17% Alpaca
Black / Sizes S,M,L



AP7090 / Cosy Round Neck Jumper
83% Organic Cotton, 17% Alpaca
Black / Sizes S,M,L

TIGHTS



TG0499 / Navy TG0499 / Black Cherry TG0499 / Juniper



TG0499 / Anthracite TG0499 / Black



TG0499 / Tights
80% Bamboo, 18% Polyamide, 2% Elastane
Anthracite / Sizes S,M,L

TOPS



JP4064 / Apricot Pg 10 JP4064 / Ivory Pg 11 JP4064 / Oxford Pg 9,38 JP4064 / Scarlet Pg 15,56 ET4185 / Multi Pg 25 ET4185 / Oxford Pg 9 BP4093 / Alabaster Pg 56 BP4093 / Jam Pg 55



JP4232 / Scarlet Pg 14,56 JP4232 / Oxford Pg 9 RJ4249 / Basil Pg 41 RJ4249 / Rust Pg 19 DL4249 / Ecru Pg 29 MC4223 / Space Pg 13 BP4214 / Alabaster Pg 56 DL4214 / Ecru Pg 28



JP4226 / Black Pg 53 JP4226 / Juniper Pg 40 BL4230 / Space Pg 21 HJ4184 / Midnight Pg 42 IV4235 / Scarlet Pg 13 IV4235 / Buff Pg 33 MT4227 / Oxford Pg 11 MT4227 / Pea Pg 38



AM4236 / Black Pg 52 AM4236 / Burgundy Pg 51 EM4229 / Black Pg 57 SD4221 / Nordic Pg 42 LC4225 / Oxford Pg 45 VJ4228 / Black Pg 50 PE4248 / White Pg 15,23



NR3176 / Plum Pg 24 NR3176 / Black Pg 55 NR3176 / Rose Pg 28 IV3179 / Scarlet Pg 12 IV3179 / Buff Pg 33 LC3178 / Oxford Pg 44 SD3169 / Nordic Pg 42 DL3146 / Ecrú Pg 29



ET3177 / Multi Pg 25 ET3177 / Oxford Pg 8 JP3174 / Juniper Pg 41 MC3170 / Space Pg 12 BL3171 / Space Pg 20 BP3171 / Jam Pg 55 BP2090 / Alabaster Pg 56 BP2193 / Jam Pg 54



ET2199 / Multi Pg 24 ET2199 / Oxford Pg 9 RJ2194 / Rust Pg 19 RJ2194 / Basil Pg 40 CD2186 / Buff Pg 32 CD2186 / Space Pg 20,47 IV2195 / Buff Pg 32 IV2195 / Scarlet Pg 13



AM2196 / Burgundy Pg 51 AM2196 / Black Pg 53 LC2192 / Oxford Pg 45 VJ2197 / Black Pg 51 SD2190 / Nordic Pg 43 MT2219 / Pea Pg 38 MT2219 / Oxford Pg 10 CH2191 / Chambray Pg 8



NR2203 / Black Pg 54 EM2205 / Black Pg 57 AM2206 / Black Pg 53 AM2206 / Burgundy Pg 50 MT2204 / Oxford Pg 10 MT2204 / Pea Pg 39 DL2201 / Ecrú Pg 28 BL2200 / Space Pg 20 HJ2198 / Midnight Pg 43

TROUSERS / SKIRTS



NR1104 / Black Pg 54 NR1104 / Ecrú Pg 41 NR1104 / Rose Pg 29 NR1104 / Plum Pg 25 CD1109 / Space Pg 22,46 CD1109 / Buff Pg 32 CD1109 / Parfait Pg 31 CH1087 / Chambray Pg 9



JP1050 / Juniper Pg 40 JP1050 / Black Pg 58 HJ1093 / Midnight Pg 39 CD1088 / Space Pg 21,23,46 CD1088 / Buff Pg 32 MC1091 / Space Pg 13 AM1103 / Black Pg 52 PV1110 / Black Pg 52



JP1043 / Black Pg 55 NR8051 / Plum Pg 24 NR8051 / Rose Pg 29 SD8061 / Nordic Pg 42 VJ8058 / Black Pg 50 MT8059 / Pea Pg 38 MT8059 / Oxford Pg 10

JACKETS & COATS



NR6030 / Plum Pg 24 NR6030 / Rose Pg 29 NR6030 / Black Pg 54 NR6030 / Ecrú Pg 40 NR4234 / Rose Pg 28 NR4234 / Ecrú Pg 41 CD6038 / Parfait Pg 31 CD6038 / Buff Pg 33



HJ6037 / Midnight Pg 39 QL6036 / Buff Pg 30 QL6522 / Rose Pg 34 QW6524 / Rust Pg 12

KNITTED ACCESSORIES



KT0212 / Thunder Pg 15 KT0503 / Thunder Pg 15 KT0327 / Thunder Pg 15 KT0212 / Multi Pg 14 KT0503 / Multi Pg 14 KT0327 / Multi Pg 14 AP0212 / Black Pg 59 AP0503 / Black Pg 59



KT0212 / Sand Pg 30 KT0503 / Sand Pg 30 KT0327 / Sand Pg 30 RS0212 / Multi Pg 35 RS0502 / Multi Pg 35 RS0327 / Multi Pg 35

KNITWEAR



KT7094 / Thunder Pg 11,15 KT7094 / Arctic Pg 21,22 KT7094 / Pumpkin Pg 22 KT7094 / Sand Pg 31,32,46 KT7097 / Thunder Pg 15 KT7097 / Sand Pg 31,47 KT7097 / Arctic Pg 23 KT7098 / Multi Pg 15



KT7093 / Thunder Pg 14 KT7093 / Arctic Pg 22 KT7093 / Pumpkin Pg 22 KT7093 / Sand Pg 31,46 FC7092 / Ivory Pg 59 RW7089 / Ivory Pg 58 AP7090 / Black Pg 59 AP7090 / Lime Pg 45



RS7096 / Multi Pg 35 RW7096 / Brights Pg 18 RE7096 / Grey Pg 19 RW7095 / Brights Pg 18 RE7095 / Grey Pg 19 RE7095 / Juniper Pg 40 AP7091 / Black Pg 59 AP7091 / Lime Pg 45

SCARVES



ET0308 / Oxford Pg 8 ET0308 / Multi Pg 25 IV0318 / Scarlet Pg 13 IV0318 / Buff Pg 33 SD0308 / Nordic Pg 43

HOW TO ORDER

CONTACT US (0044) 1566 777338

Customer Services & General Enquiries:
info@nomadsclothing.co.uk

Showroom:
8-9 Eldon Way, Crick,
Northampton, NN6 7SL

House Accounts
Tracie Ashford - 07976 788884
tracie@nomadsclothing.co.uk

Lesley Rock - 07890 189022
lesley@nomadsclothing.co.uk

Order with us and receive:
Low First Minimum Order
Stock for Season Top-ups
In Season Offers
Free POS & Hi-Res Images

UK AGENTS

South East & East Anglia
Simon Smith - 07919 922676
simon@simonsmithagencies.com

Cumbria, Scotland & Northern Ireland
Karen Oliver - 07813 075099
karenoliverfashion@gmail.com

Midlands, North England & North Wales
Cultivate Agency - 01612 379555
Beki@cultivateagency.co.uk

South West and South Wales
Surfwave Agencies
Mark Morgan - 07879 492989
mark@surfwaveagencies.co.uk
Jack Morgan - 07305 070316
jack@surfwaveagencies.co.uk

SOCIAL MEDIA

- [facebook.com/nomadsclothing](https://www.facebook.com/nomadsclothing)
- twitter.com/nomadsclothing
- [pinterest.com/nomadsclothing](https://www.pinterest.com/nomadsclothing)
- [instagram.com/nomadsclothing](https://www.instagram.com/nomadsclothing)
- [uk.linkedin.com/company/nomads-clothing](https://www.linkedin.com/company/nomads-clothing)

EU AGENTS

Germany - Milk
Jochen - 0049 175 4054633
agentur@milk-concept.de

Italy - Andes Organic
Claudio - 0039 0432 501473
info@andesorganic.it

Netherlands - ModeCW
Caroline - 0031 (06) 45 374 578
carolinewetenkamp@live.nl

SIZE GUIDE

UK Women	Bust (cm)	Waist (cm)	Hip (cm)
8	88	73	91
10	93	78	96
12	98	83	101
14	103	88	106
16	108	93	111
18	113	98	117
20	118	103	122
S	88-98	73-83	91-101
M	98-108	83-93	101-111
L	108-118	93-103	111-122

OUR MODELS

Both our models - China & Kirsty
wear a size 10 and are 5'9

WITH THANKS

Special thanks to:
The Campion Barn, Pancrasweek
Temple Cafe & Restaurant, Bude



FROM COSY DAYS IN TO WINTER STROLLS
OUR NEW COLLECTION HAS EVERYTHING YOU
NEED TO ENJOY THE NEXT AUTUMN WINTER.

www.nomadsclothingwholesale.com

nomads

LIVE • BREATHE • WEAR



Nomads Clothing

01566 777338

nomadsclothingwholesale.com

info@nomadsclothing.co.uk

Nomads Clothing, 9 Western Road,
Launceston, Cornwall, PL15 7AR, UK



We are proud members of
GOTS and Common Objective

Visit our website
and order online.

Printed using vegetable based inks and FSC
certified paper. Please recycle me after use.