

# LAND & SHORE

Spring Summer 2026

---

Homeware Collection



# LAND & SHORE

## Homeware Collection

---

Vibrant, eclectic designs inspired by nature, blending floral and geometric patterns, this collection brings a rich mix of patterns, textures, and hand-painted styles into your home.

Whether it's through bold motifs or subtle detailing, Land & Shore transforms everyday spaces into vibrant, eclectic havens.



Simple  
but  
beautifully  
curated.



## The Design Story

---

The Land and Shore collection is all about balance - where simple, natural elements meet bold, colourful expressions.

From carefully curated floral motifs to block-printed geometric designs, each piece offers a unique blend of vintage charm and modern craftsmanship.

We believe in the beauty of contrast - mixing patterns and scales for a truly eclectic, feel.



# Key Features of the Collection

---

**Colour Stories:** 3 colour stories inspired by nature.

**Global Motifs & Influences:** Our patterns are inspired by a range of global styles, blending botanical illustrations with geometric designs and abstract details to create a dynamic and layered look.

**Hand-Painted Aesthetic:** Each design feels personal and artistic, with hand-painted details that bring a sense of craftsmanship and care to your home decor.

**Eclectic Mix of Patterns:** From flat paint designs to block prints, the collection offers a variety of styles that can be mixed and matched to create a unique, bespoke look for every room.







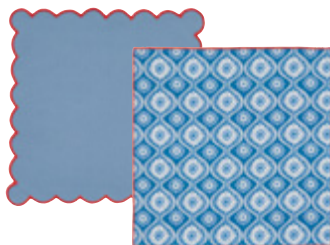
## KITCHENWARE

---

ACHILL



**APRON**  
70 x 85cm (one size)



**NAPKIN 4 PACK**  
40 x 40cm



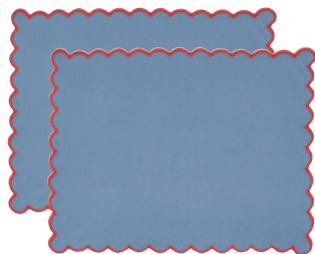
**NAPKIN (PAPER)**  
40 x 40cm



**OVEN GLOVE**  
18 x 37cm



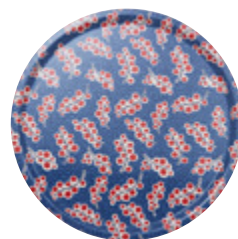
**DOUBLE OVEN GLOVE**  
18 x 85cm



**PLACEMAT PAIR**  
35 x 45cm



**SEATPAD**  
40 x 40cm



**LIVIE TRAY**  
46cm diameter



**TEA TOWEL PAIR**  
70 x 50cm



**TABLE RUNNER**  
40 x 230cm



**TOTE BAG**  
50 x 33cm





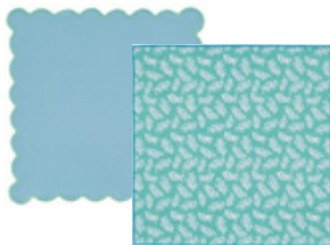


## KITCHENWARE

LIVIE



**APRON**  
70 x 85cm (one size)



**NAPKIN 4 PACK**  
40 x 40cm



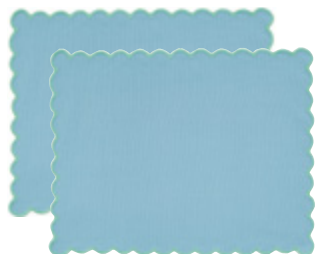
**NAPKIN (PAPER)**  
40 x 40cm



**OVEN GLOVE**  
18 x 37cm



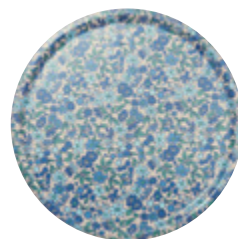
**DOUBLE OVEN GLOVE**  
18 x 85cm



**PLACEMAT PAIR**  
35 x 45cm



**SEATPAD**  
40 x 40cm



**BRAMBLE TRAY**  
46cm diameter



**TEA TOWEL PAIR**  
70 x 50cm



**TABLE RUNNER**  
40 x 230cm



**TOTE BAG**  
50 x 33cm







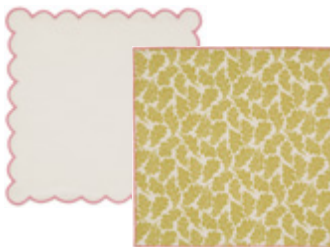
## KITCHENWARE

---

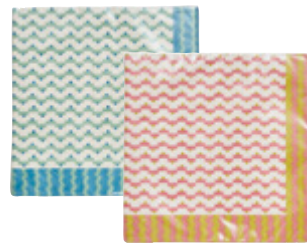
OAK



**APRON**  
70 x 85cm (one size)



**NAPKIN 4 PACK**  
40 x 40cm



**NAPKIN (PAPER)**  
40 x 40cm



**OVEN GLOVE**  
18 x 37cm



**DOUBLE OVEN GLOVE**  
18 x 85cm



**PLACEMAT PAIR**  
35 x 45cm



**SEATPAD**  
40 x 40cm



**ROWALLANE TRAY**  
46cm diameter



**TEA TOWEL PAIR**  
70 x 50cm



**TABLE RUNNER**  
40 x 230cm



**TOTE BAG**  
50 x 33cm



## FINE BONE CHINA MUGS

---



LIVIE



CEDAR



BARROW STRIPE



ROWALLANE



RIVER STRIPE



ASTER



Let your senses  
drift through a  
meadow filled  
with floral joy.





### Meadow Walk

Let your senses drift through a meadow filled with floral joy. A vibrant scent, brimming with notes of echinacea blossom, elderberry & jasmine settled on a relaxing woody base of cedarwood and musk to captivate and calm the senses.

### Coastal Bay

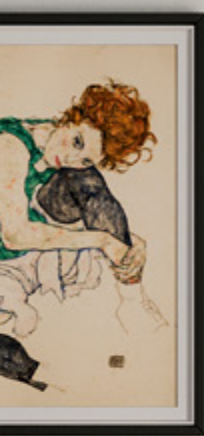
Transport yourself to the coast with this fresh, invigorating scent. Notes of sandalwood and refreshing eucalyptus meld with peach, rose and a citrus burst of orange to enliven the senses.



### Rowan Wood

Capturing the essence of a woodland trail, this rich, moody fragrance exudes a sensual feel. Notes of orange, amber & oud, nestled with top notes of lemon create a deep, aromatic blend to invigorate the senses.







## CURTAINS & ACCESSORIES

---

### YELLOW COLOUR STORY



**ESTHER (MULTI)**



**ROWALLANE (OCHRE)**



**DAWN (OCHRE)**



**LAINIEY CUSHION**  
60 x 40cm



**NARIN CUSHION**  
50 x 50cm



**PICNIC CHECK THROW**  
150 x 200cm



**ESPIE THROW**  
150 x 200cm





## Curtains & Accessories

---

### GREEN COLOUR STORY



**ESTHER (GREEN)**



**ROWALLANE (GREEN)**



**FINTRA STRIPE (GREEN)**



**POSEY CUSHION**  
50 x 50cm



**NARIN CUSHION**  
50 x 50cm



**PICNIC CHECK THROW**  
150 x 200cm



**ESPIE THROW**  
150 x 200cm





## CURTAINS & ACCESSORIES

---

### BLUE COLOUR STORY



DAWN (BLUE)



ROWALLANE (BLUE)



FINTRA STRIPE (BLUE)



NESSA CUSHION  
70 x 40cm



NARIN CUSHION  
50 x 50cm



PICNIC CHECK THROW  
150 x 200cm



ESPIE THROW  
150 x 200cm



## BATH & LOUNGEWEAR

---



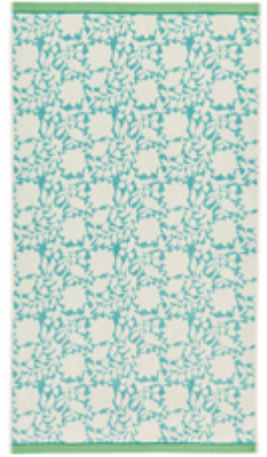
ASTER



BARROW STRIPE



GRASS STRIPE



ROWALLANE



BRAMBLE



ROWALLANE



ROWALLANE



MEADOWSWEET



BRAMBLE FLORAL



TOTE BAG

A collection  
full of personality.



BRAMBLE



Uplifting and fun.



BLOOM



A journey  
through  
colour  
and  
texture.



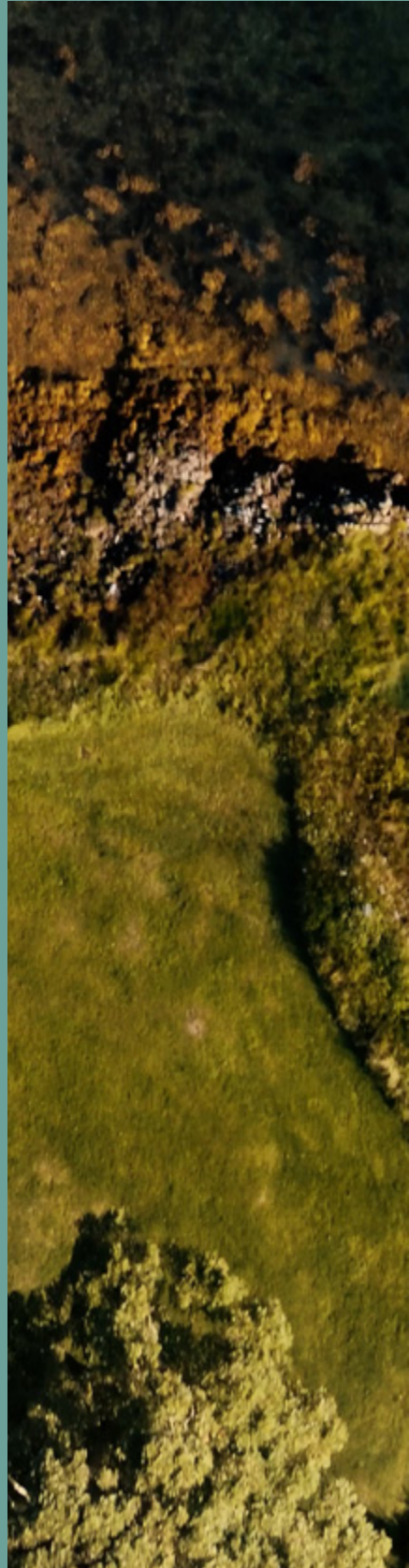
Land & Shore is all about  
layering - mixing scales,  
textures, and patterns to  
create a harmonious yet  
vibrant home.

From bold florals to intricate geometrics, our collection brings depth and dimension to every space.



The carefully selected colour palette - featuring botanical greens, soft pastels, and bold accent hues - allows you to design rooms that feel fresh, inviting, and full of life.

With Land & Shore, every piece tells a story - whether it's a hand-painted motif or a carefully crafted fabric. We hope this collection inspires you to explore new ways to bring colour, pattern, and joy into your home.





# LAND & SHORE

[care@bedeck.co.uk](mailto:care@bedeck.co.uk)

UK: 0333 200 7331

ROI: 048 3832 2698

INT: +44 28 3832 2698

[landandshore.co.uk](http://landandshore.co.uk)