

A woman with long, wavy brown hair is standing outdoors, wearing a blue halter-neck dress with a floral pattern. She is looking slightly to the right of the camera. The background is a bright, hazy sky with some clouds. The text "HOUSE OF JAMO" is overlaid on the image in a large, dark blue, serif font.

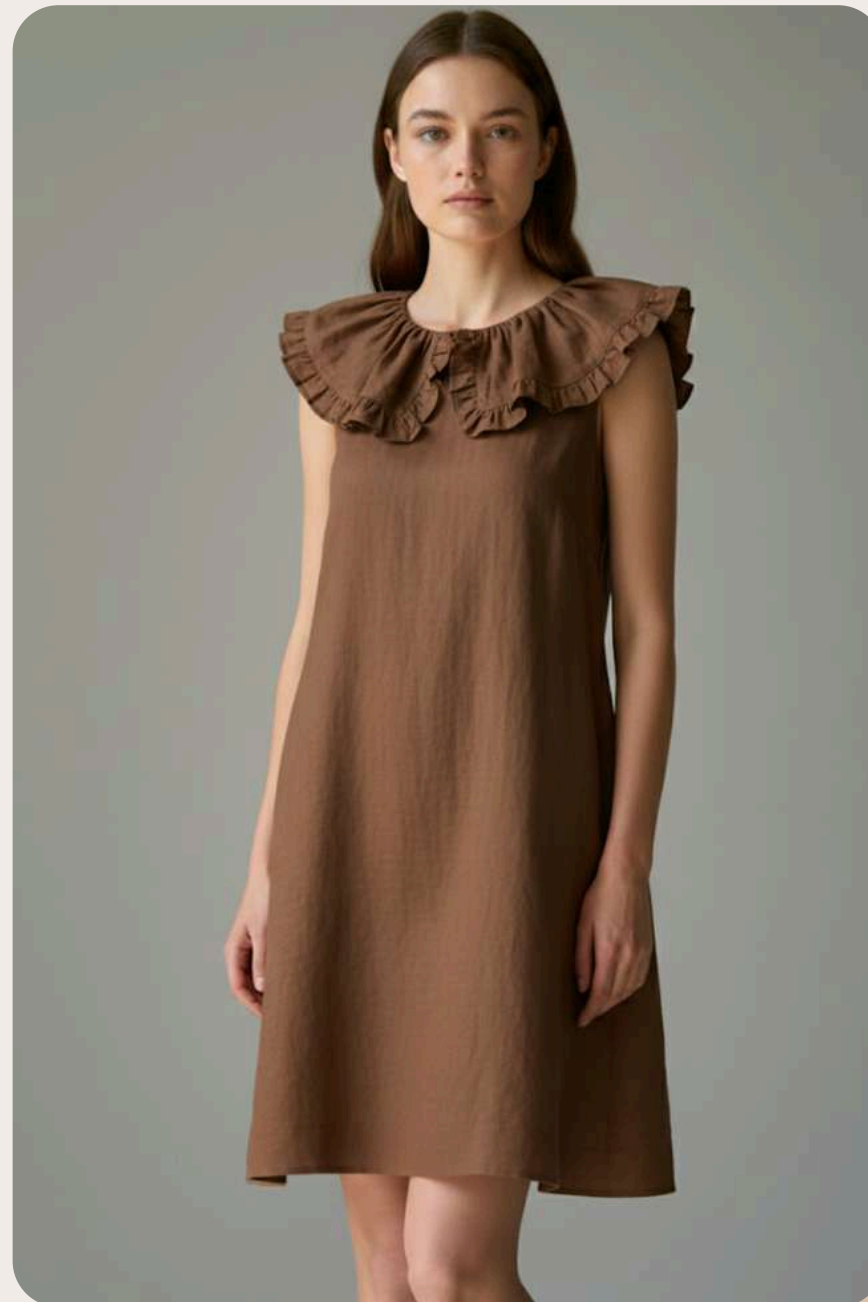
HOUSE OF JAMO

WHO WE ARE

House of Jamoti is a manufacturing-led fashion brand built on a 35-year legacy of textile and garment production, established in 1991. Rooted in India's rich manufacturing heritage of Jaipur, our foundation lies in deep expertise across fabrics, garment construction, and quality-driven processes. We maintain strong in-house manufacturing capabilities and work with skilled artisans to ensure consistency, precision, and superior finishing. We create thoughtfully crafted styles designed for the modern, global market.



STRENGTH



- In-House Manufacturing: Complete control over production, quality, timelines, and finishing.
- Fabric Expertise: Deep understanding of fabrics, construction, and garment detailing.
- Skilled Artisan Network: Long-standing collaboration with experienced artisans and craftsmen.
- Scalable Production: Ability to handle small batches as well as bulk manufacturing.
- Advanced Embroidery Machines: Precision-driven embroidery for detailed and consistent finishes.
- In-House Dyeing Unit: Controlled colors and uniform finishing

ARTISAN



- We work with sustainability at the heart of our brand.
- Use of organic threads and natural, eco-friendly materials.
- Cruelty-free fashion with compassion at its core
- Ethical and responsible production practices
- Safe for skin, gentle on nature

OUR COLLECTION

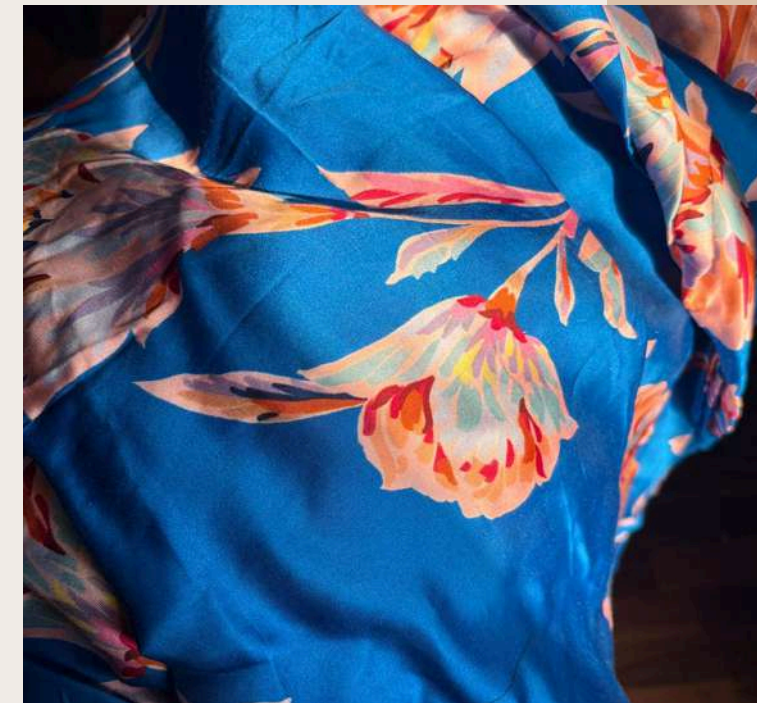


OUR COLLECTION



FABRICS

- Premium Fabric Focus: 100% cotton and cotton blends selected for comfort, breathability, and durability.
- Season-Versatile Selection: Fabrics suited for all seasons—from lightweight summer weaves to richer winter qualities.
- In-House & Sourced Development: A balance of in-house fabric development and carefully sourced materials.
- Diverse Fabric Range: Cotton Schiffli, Viscose Modal Satin, Viscose Muslin, Cotton Linen, 60s Linen, Cotton Gauze, and 100% Cotton—crafted for quality and refined design.



COTTON SCHIFFLI-

Lightweight cotton fabric with embroidered eyelet patterns; airy, decorative, and breathable.



COTTON LINEN -

Smooth, glossy fabric made from viscose/modal fibers; soft, drapey, and luxurious feel.

VISCOSE MODAL SATIN

Known for its smooth drape and subtle sheen, this fabric delivers a soft, luxurious finish with excellent fluidity and comfort.



VISCOSE MUSLIN



Lightweight and breathable with a gentle flow, making it perfect for relaxed, airy designs and warm-weather dressing.

60S LINEN-

A finer, more refined linen quality with a premium hand feel, offering structure while remaining breathable



100% COTTON – A timeless staple valued for its versatility, durability, and all-day comfort across seasons

COTTON GAUZE-

Soft, airy, and breathable, ideal for warm climates and effortless, relaxed silhouettes.





OUR FABRIC RANGE INCLUDES

- Cotton voile
- Cotton cambric
- Cotton poplin
- Cotton double gauze
- Cotton linen
- Cotton muslin
- Cotton dobby
- Cotton doriya
- Cotton schiffli

- Custom Print Orders

MOQ-based services available across screen printing, digital printing, and traditional hand block printing, tailored to your brand's requirements

VARIETY OF TEXTURED FABRICS



BAGS & POUCHES



HAND EMBROIDERY



We offer luxurious hand embroidery on all types of fabrics, thoughtfully crafted for occasion wear, evening collections, and premium statement pieces.





COTTON PRINTED FABRICS





LET'S CREATE SOMETHING BEAUTIFUL TOGETHER — PARTNERING WITH
BRANDS THAT BELIEVE IN AUTHENTIC STORIES AND SKILLED
CRAFTSMANSHIP.