

The logo is set on a piece of wood with a rough, natural edge. The word "TouchWood" is written in a bold, dark teal font. A small white hand icon is positioned inside the letter 'o' of "Touch".

TouchWood

OUR WORK IS PLAY
Bespoke

We design, build and install
award-winning playgrounds



Contents

- 1 About us
- 2 Enhancing the visitor experience
- 3 Play settings
- 4 Case studies
- 5 Our process
- 6 Contact us



Each project is unique, making them such a joy to work on. Play is so important. I'm a firm believer in the importance of creating natural playgrounds where modern children can learn to understand what it means to take risks. But I'm also passionate about creating beautiful environments that complement their surroundings.

Joe Cooper
TOUCHWOOD PLAY FOUNDER

We are TouchWood Play.

We design, build and install unique, natural playgrounds that inspire, challenge and connect children with nature.

Since 2002, we've created hundreds of play experiences for leisure parks, visitor attractions, schools, public spaces, trusts, charities and commissions.

Whether you want a nature trail, play area or show-stopping adventure playground, we have the knowledge, experience and passion to bring your vision to life.

TouchWood is one of the very few companies that source and process the raw materials, then design, manufacture, install and maintain our play equipment. Our difference is the care and value we give to each piece of timber that goes into your play feature.

HERE TO SUPPORT YOU EVERY STEP OF THE WAY

We will support you with everything from inspiring ideas to installation, long-term care, and maintenance.

Our expert design team helps our educational clients by guiding them through every step of the playground design and build process.

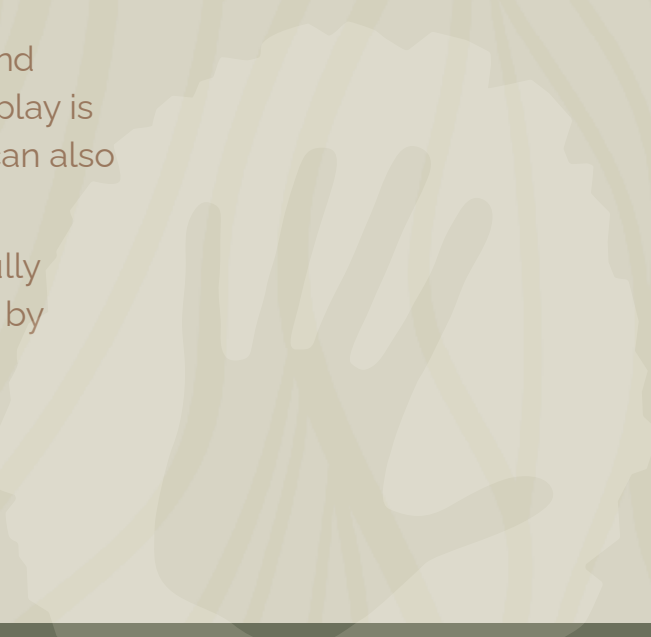
We offer annual maintenance visits to ensure your playground is not only safe, but also that it stays in the best condition to continue to be enjoyed for years to come.

At TouchWood, we are passionate about real play.

The spaces we create are meaningfully connected to their surroundings and to the clients we work with. Because at TouchWood, we play together.

And while real play comes naturally, we never take it for granted. We work hard and care deeply. About our clients, their project, their brand. We understand that real play is serious business. Yes, real play captures imaginations and holds attention. But it can also dramatically increase footfall and dwell time and ROI. We get real play value.

Because our play spaces are thoughtfully designed, lovingly crafted and beautifully made, you can feel how much they mean to us. You can see much they're valued by kids, families, carers and customers.



Sustainable
and kind to the
environment

Natural materials,
built to last.





CRIBBS CAUSEWAY



We create unique play spaces for household names.

We've worked with some of the biggest leisure destinations, both in the UK and internationally.

We know how to make things unique. Beautiful. Memorable. Instagram-worthy. Something to talk about.

Nothing is off the shelf. We constantly innovate, creating new and special features that will make your play space truly unique.



Our play barn has been completely transformed into an immersive, jungle experience that does not disappoint. We have had so many visitors come, super excited to get stuck into play. The jungle play barn is definitely a staple of the farm.

WHITE POST FARM

2

Enhancing the visitor experience.

We know how to weave your brand story into a playscape, creating an experience with huge play value.

If you're operating a commercial destination – whether it's leisure, tourism, sports or any other kind – you're likely looking for ways to attract more people, enhance the visitor experience, and encourage people to stay longer and spend more on-site in your adventure park.

On top of that, you want them to recommend your destination to their friends and share it on social media.

Since 2002, we have designed, built and installed hundreds of bespoke, exciting, sustainable playgrounds that provide youngsters with rich, creative, engaging play.

We can help you keep visitors coming back year after year.



**STAND OUT FROM THE CROWD WITH
A FULLY BESPOKE PLAY SPACE**



WE UNDERSTAND THAT YOU'LL WANT A PLAYGROUND THAT WILL:

- Attract more new and returning visitors
- Encourage people to stay longer and spend more on site
- Set your destination apart from the rest
- Be recommended by visitors in person and online
- Be open to new developments as your priorities change
- Be safe and long-lasting
- Be affordable







At TouchWood, our focus is on creating real play settings that inspire imagination, promote physical activity, and foster social interaction.

Play settings

Through our dedication to only using natural materials, shapes, and design and build in our structures, we inspire rather than direct play – enabling children to explore our structures in a way they choose.



Adventure play



Increase visitor
numbers





Throughout the whole process, TouchWood were impressive. The final products look stunning. They have a sculptural feel that enhances the natural space beautifully. They have been the talk of the village and are extremely popular with the kids and adults alike.

IONIDES TRUST



PROMOTE SUSTAINABLE PLAY

Nature play





Sensory play



**ENCOURAGE
LONG-LASTING PLAY**



Spark their
imagination



Indoor play



TouchWood's bespoke approach to each project delivers unique one off experiences. Spending just a few minutes with the Touchwood team enables you to feel their passion on what they are designing and creating. I can't wait to work with them again on future projects.

LYONS+SLEEMAN+HOARE ARCHITECTS





AMAZING PLAY, WHATEVER THE WEATHER



A child wearing a bright yellow raincoat and blue rubber boots stands on a stone ledge, reaching out to touch a waterfall. The setting is an indoor play area with a thatched roof, wooden pillars, and a green artificial grass floor. A yellow arrow points from the top right towards the child. The text 'Water play' is overlaid on a dark blue rectangular background.

Water play

**SET YOUR
DESTINATION
APART FROM
THE REST**





Sand play



TouchWood's drive for sustainable design, whilst creating an oasis of joy for children, makes their product unique and bespoke.

VALUE RETAIL MANAGEMENT LTD



**INCREASE
DWELL TIME**





Case studies

Our inspiring case studies share how our innovative playgrounds have supported leisure destinations to create amazing play spaces for their visitors.





EDEN PROJECT

Cornwall, UK

Nature's Playground is one of the largest outdoor play areas in the South West.

TouchWood worked with the Eden Project to create an engaging play space, including slides, swings, water play, suspended nets and a miniature clay quarry. The centrepiece is a bespoke nine-metre-high Tree of Life tower where children can crawl and climb to the viewing nest before travelling back down in a corkscrew tube slide.

The 500-square-metre area also provides sensory and accessible play, immersing Eden's visitors in a woodland world made from natural and sustainable materials.









HOBLEDOWN HEATH

London, UK

TouchWood created a new fantasy play world inspired by a children's story.

The project was ambitious, with a projected footfall of thousands of visitors every year, and a need for unique and ground-breaking design.

We designed four villages, which have been described as the “wackiest, wildest and most creative adventure playground, with slides, chutes, wheels, levers and a twisty world of madness.”

With durability and creativity at the core, we explored the use of multiple materials and techniques to craft an immersive themed play world, full of kinetic play.

We were delighted to be a finalist in the 2023 RoSPA Play Value Awards for this project.









FESTYLAND

Normandy, France

TouchWood created a pirate-themed village, weaving together elements of fantasy, history, and immersive play to create an unforgettable experience.

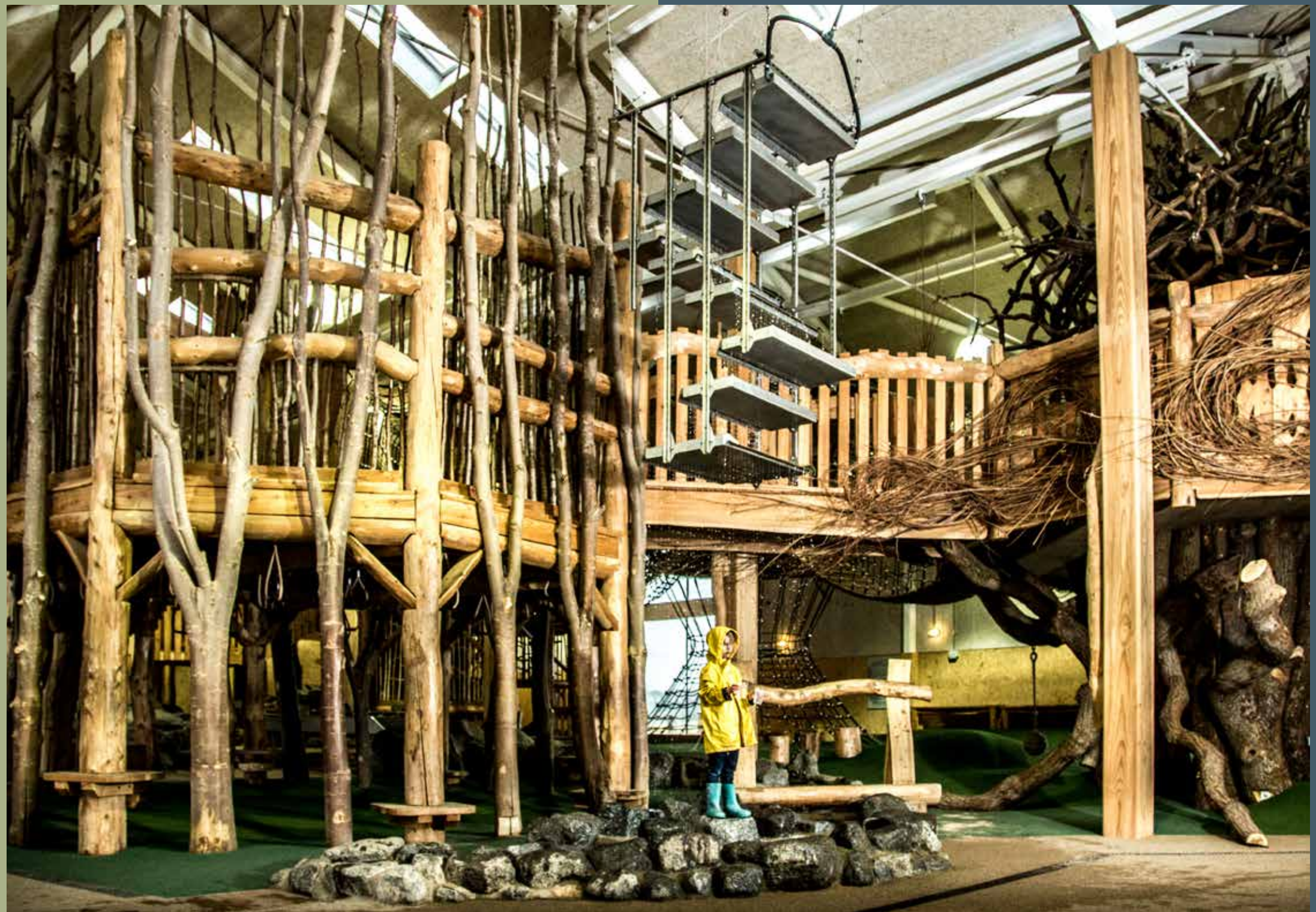
The village consists of a cluster of tumbled-down buildings and a majestic pirate ship, all connected by secret underground passageways—the smugglers' route, bridges, and platforms that zigzag up and down the slope.

We took a unique approach to the design by focusing on creating movement routes and challenges through the village that are adult-sized. This ensures that parents, grandparents and carers can actively participate in the play experience, sharing in the imaginative journey of the pirate world with their children. The result is a cross-generational play experience that fosters cherished memories of a fantastic day out.









WILLIAM'S DEN

Yorkshire, UK

TouchWood helped to create the UK's largest ever natural indoor and outdoor playground.

Our expert team created 'The Den'; a unique indoor play space for children of all ages, constructed from responsibly sourced wood, and housed inside a huge 475m barn.

The play space includes a 25-metre granite installation, complete with cascading stream, pool and a rainmaker to simulate a rain shower. A unique six-metre high ancient oak links to a tree house, which incorporates swings, balancing pole branches, bridges and a three-metre slide off a deck down into a sandpit below.

This unique play area has proved to delight and inspire children and adults alike and has won several prestigious awards.





ZUHA ISLAND - OPENING IN 2025

Dubai, UAE

TouchWood is engaging with Zuha Island in Dubai to create an exciting and unique indoor and outdoor play space.

We are creating a three story indoor playspace on Zuha Island, as well as an outdoor area with water play, beach huts and an island challenge area.

The play equipment will offer a dynamic blend of challenge and excitement for all ages from toddlers to teenagers. The spaces will feature a wide range of structures, including tree houses, climbing walls, zip lines and agility courses.





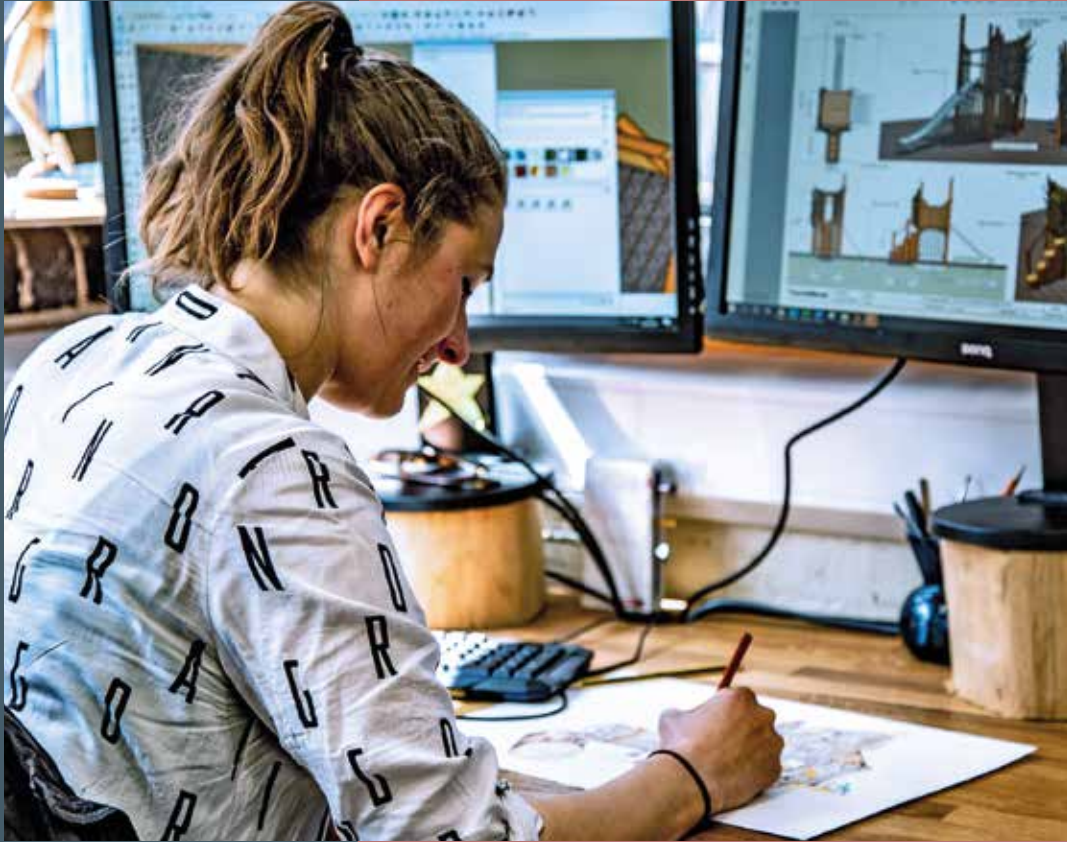




Creating bespoke playscapes for clients is a journey.



It's a journey we go on together.
From ideas to reality, we create
something truly special **together**.



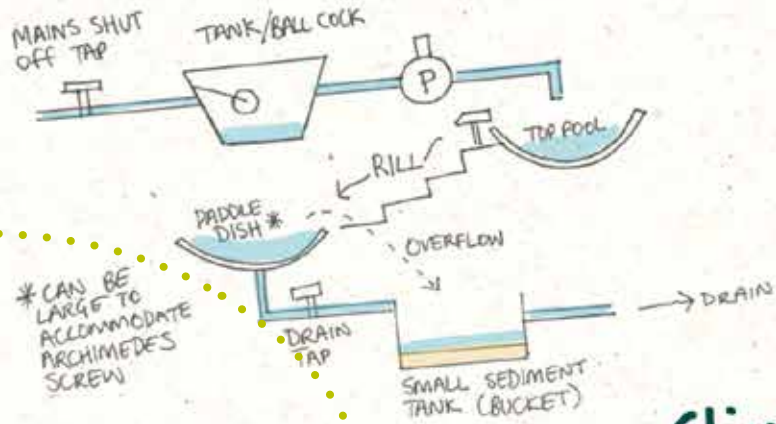
Imagine & inspire.

The first step is a true 'meeting of minds', where clients share their vision and ideas.

Some are prescriptive, others want more ideas and input from TouchWood, often depending on the space. It's a thorough, collaborative briefing that forms the seed of the project.

From these discussions, TouchWood's talented designers use their creativity to produce drawings to illustrate their vision of the new play space, bringing the ideas to life.



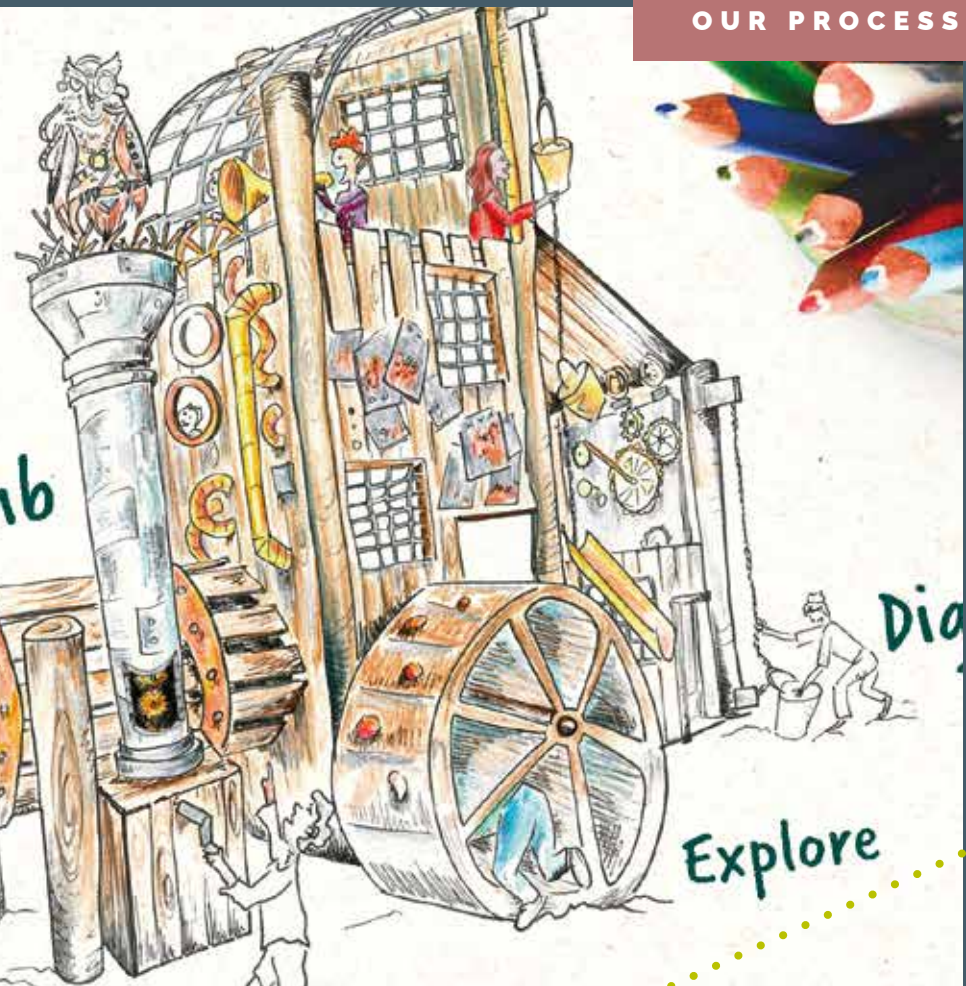
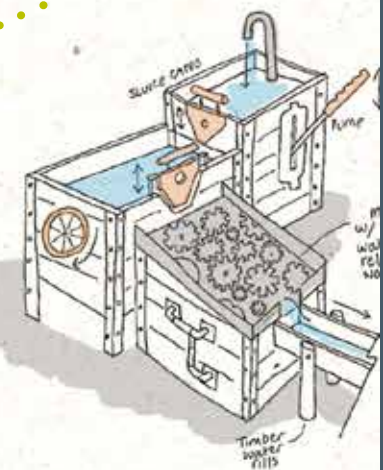
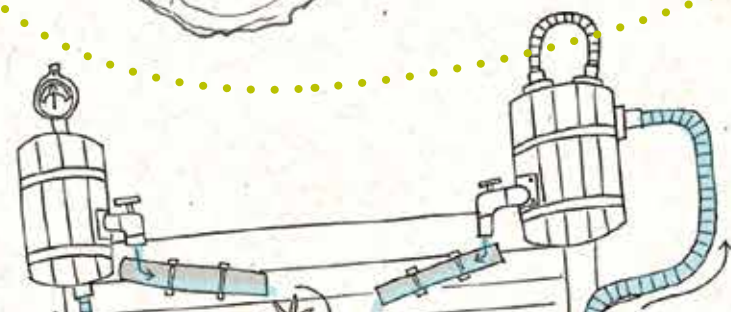
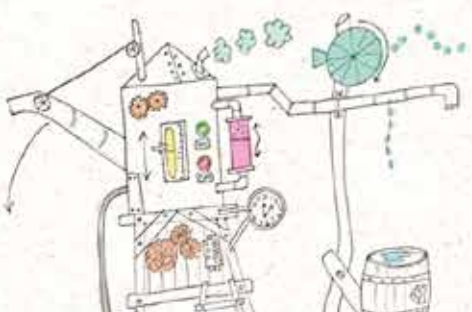


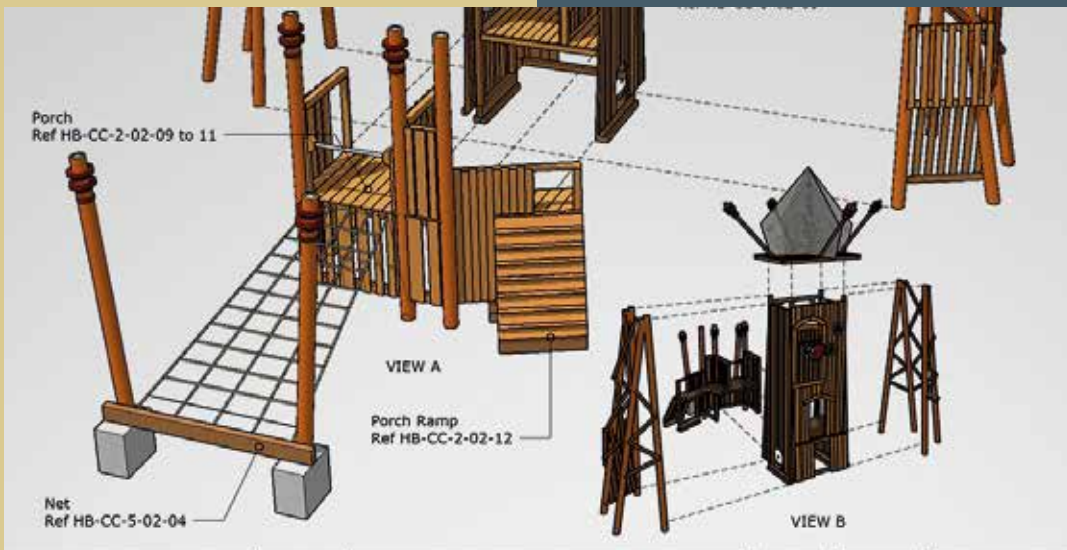
Splash

Climb

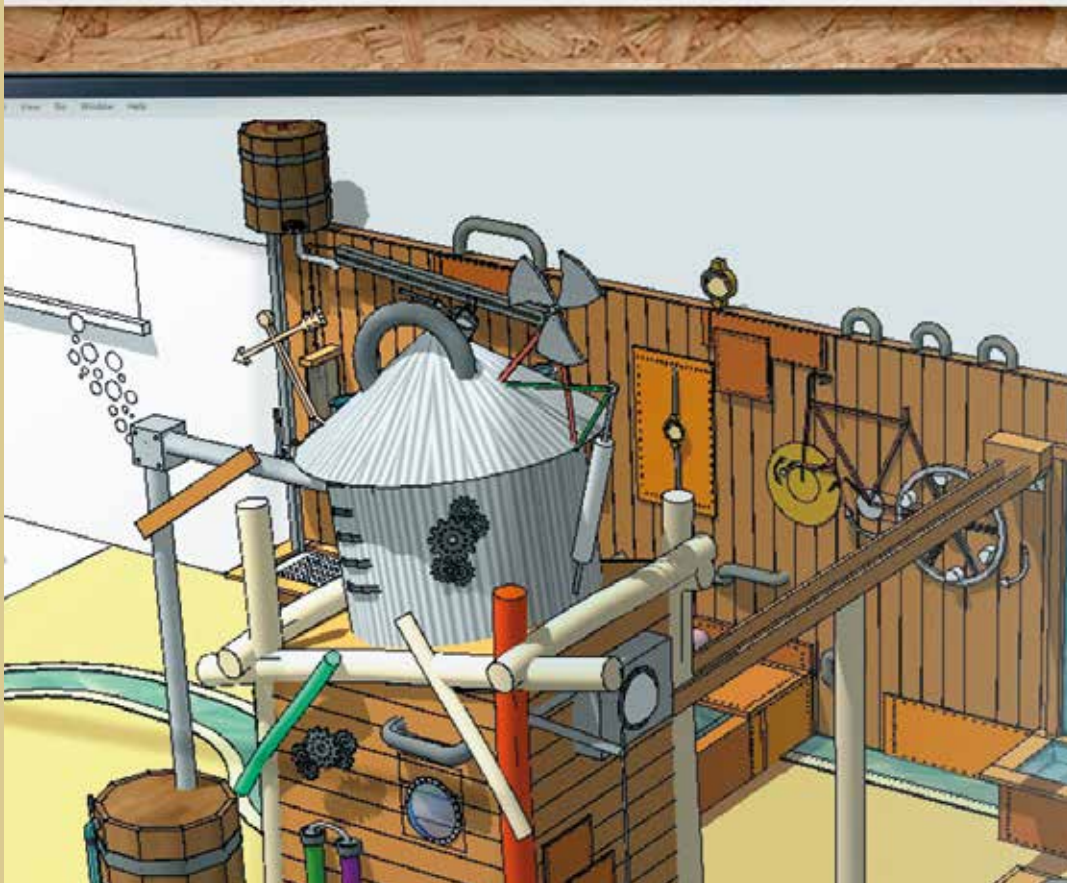
Explore

Dig





Creek	Drwg Title:	Feature Overview- MF		Date:	28/09/21	All dimensions in mm (Unless Stated Otherw
ower	Drwg No.:	2-02-02	Revision:	01	Drawn by:	JF
						Scale at A3



Next step is technical design – this is a detailed engineering document, defining the precise measurements and detail of the structure to ensure the construction and installation process is smooth and play safety criteria is met.

Manufacture is where the project begins to come to life, first in the woodyard – creating the structure out of the raw materials.










Build & play.



Once the component parts of the entire playspace are made, they are transported to site and installed before receiving a play safety inspection by the Royal Society for the Prevention of Accidents (RoSPA).





Whether you have a live project or the seed of an idea, we're here to help.

We'd love to work with you.

Our team is always happy to talk about your ideas and answer any questions you may have about how we work, or offer advice on how best to successfully deliver your project.





TouchWood

OUR WORK IS PLAY

Email: enquiries@touchwoodplay.co.uk

Bower Ashton Woodyard, Bristol, BS3 2JT
United Kingdom

www.touchwoodplay.co.uk

(+44) 0117 963 8222