



# WiFi

Transform your park and guest connectivity experience with our Managed Park WiFi, offering secure, separate networks for business and guests, backed by UK-based support available 7 days a week. Our service is friendly, approved for safe browsing and provides professional installation options. Enhance guest satisfaction with complimentary access or opt for paid access to aid in cost recovery.



## FEATURES OF INTEGRATING IN PARK WiFi

### Enhanced Connectivity Across Leisure Locations

Our high-speed networks and WiFi solutions are designed to transform holiday parks, touring parks, holiday homes, resorts, marinas, and waterways into fully connected environments.

### Guaranteed Coverage

We guarantee exceptional coverage before site work begins using the latest modelling software.

### Time-limited Free Access

Free, limited-time access gives users the confidence to purchase longer-length packages.

### Advanced Roaming Features

All guests can move through the sites and venues while remaining connected.

### Managed and Supported

Our UK-based team offers 7-day-a-week support.

### Secure and Separate

Distinct networks for business and guest use, ensuring security.

### Peace of Mind

We only use the best enterprise-grade equipment, all with a 3-year warranty.

### Legislatively Compliant

Fully compliant systems for peace of mind.

### Child-Friendly WiFi

Safe browsing with filters to block unsuitable content.



# WiFi

## BENEFITS OF INTEGRATING IN PARK WiFi

### Ultra-Fast Network

Provide your guests an ultra-high-speed network from the day they move in.

### Collaborative Delivery

Working with you to build the necessary infrastructure into the fabric of your site.

### Direct To Accommodation

Deliver WiFi direct to your accommodation using an existing TV coax network.

### Professional Installation

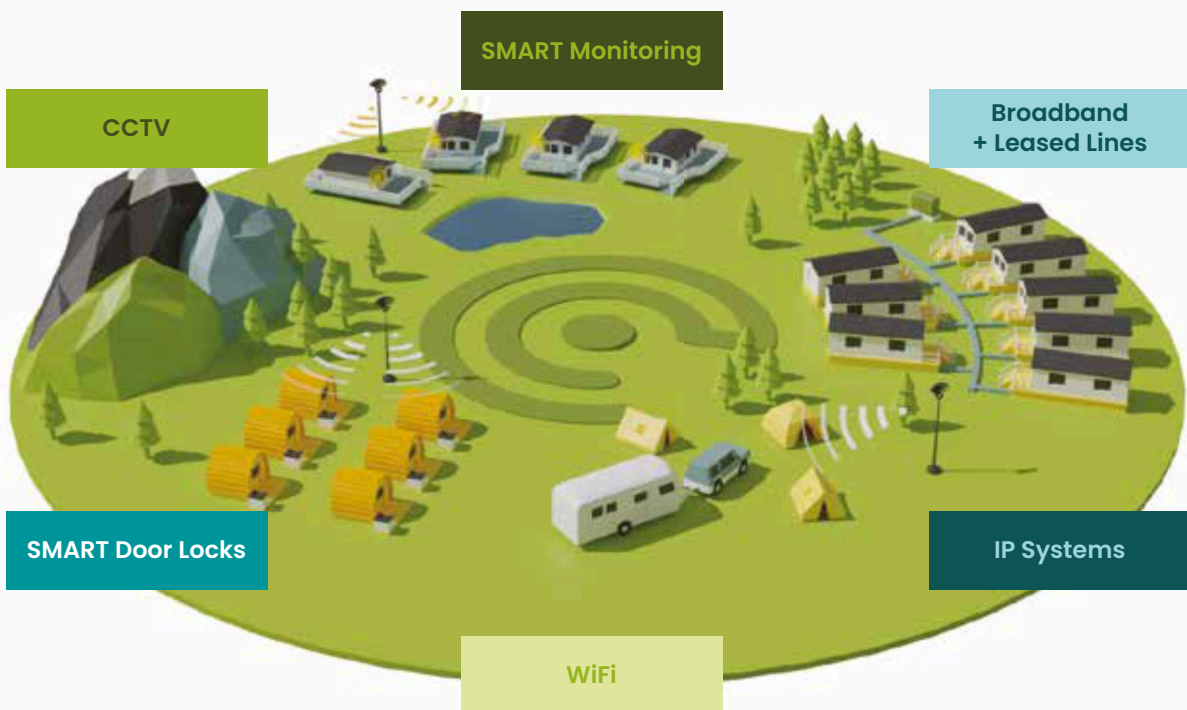
Our expert team ensures a smooth setup for more significant sites, complete with pre-installation surveys and a 12-month warranty.

### Complimentary Access

Easy, one-click connectivity for guest satisfaction.

### Paid Access

For guests to pay for WiFi, enabling cost recovery.





# Broadband + Leased Lines

Upgrade your park and guest connectivity with our Broadband and Leased Lines services, tailored to meet your specific needs based on the Openreach infrastructure in your area. From high-capacity Leased Lines to ultra-fast FTTP, we ensure you get the best in speed and reliability.



## Broadband Options

Depending on the infrastructure available in your area, we provide:

### FTTP (Fibre to the Premises)

Experience internet at lightning-fast speeds up to 1000 Mbps, ideal for extensive usage and large data demands.

### FTTC (Fibre to the Cabinet)

A robust and reliable option providing speeds up to 80 Mbps, suitable for everyday online activities.

## OUR CONNECTIVITY SOLUTIONS

### Leased Lines

Premium, high-speed internet access with dedicated bandwidth. Perfect for those who need consistent performance and can invest in superior connectivity.





# Broadband + Leased Lines

## KEY BENEFITS + FEATURES

### Unlimited Data

Enjoy unrestricted internet access with no data caps.

### Guaranteed Speeds

We aim to offer the fastest speeds available in your area, ensuring your park and guests enjoy superior connectivity.

### Router Compatibility

Customise your network with your router to provide secure and reliable WiFi to your guests.

### Transparent Line Rental

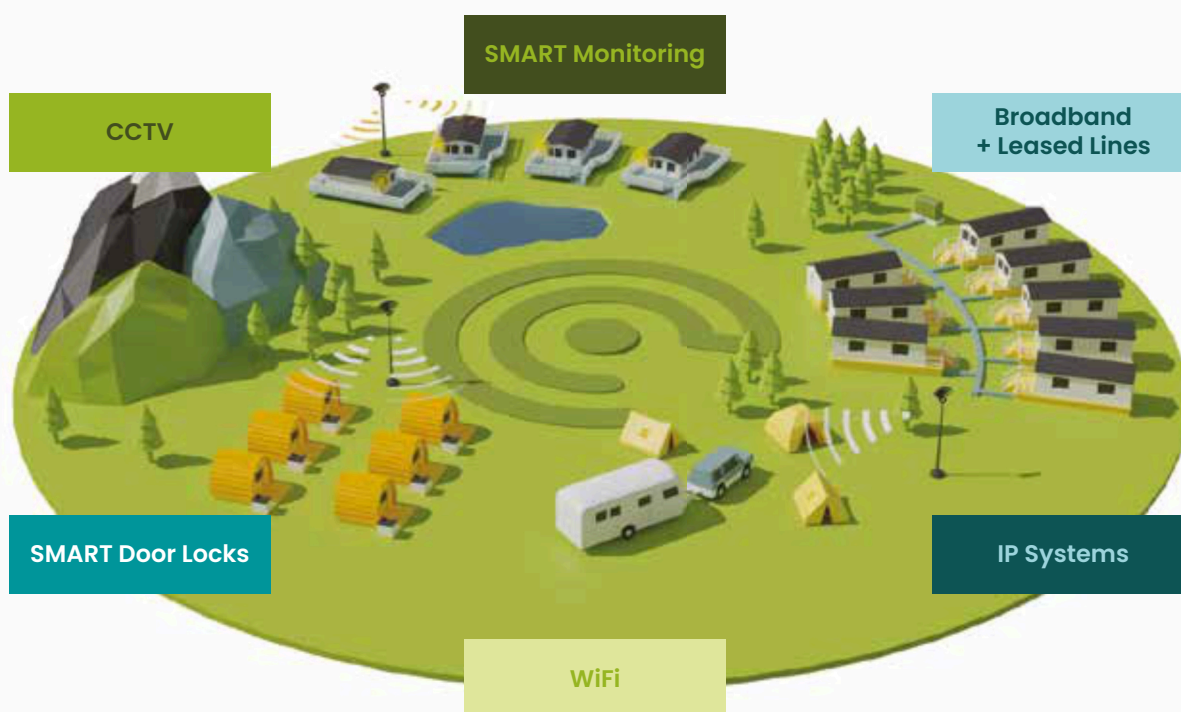
Our line rental is straightforward, with no hidden fees, and includes additional call management features.

### Smooth Transition

Switch to our services easily and without interrupting your current connectivity.

### UK-Based Support

Our friendly team is on standby 7 days a week to provide tailored solutions and support.





# VoIP Systems

Transform your park communication with our cutting-edge VoIP Systems to ensure seamless, clear, and consistent communication. With user-friendly interfaces, our systems facilitate efficient park management, enabling staff to connect effortlessly and respond to guest needs quickly.



## Dedicated Support

- Access to a 7-day technical helpline exclusive for park owners.
- Proactive remote monitoring and support to ensure continuous operation.
- On-demand on-site service by skilled engineers for any technical needs.

## FEATURES OF OUR VoIP SYSTEMS

### Customised System Configuration

- Tailored to your park's unique needs, supporting a variety of devices.
- Precise selection to match the feature set required for diverse device types.

### Turnkey Setup

- Comprehensive pre-configuration, including call flows, business hours, voicemail, and messages.
- Delivered ready-to-use for immediate on-site implementation.





# VoIP Systems

## BENEFITS OF OUR VoIP PHONE SYSTEMS

### Clarity

Unparalleled audio clarity enhances team coordination and guest service.

### Ease of Use

Intuitive interfaces allow for effortless park management.

### Scalability

Adaptable solutions that grow with your park's size and complexity.

### Connectivity

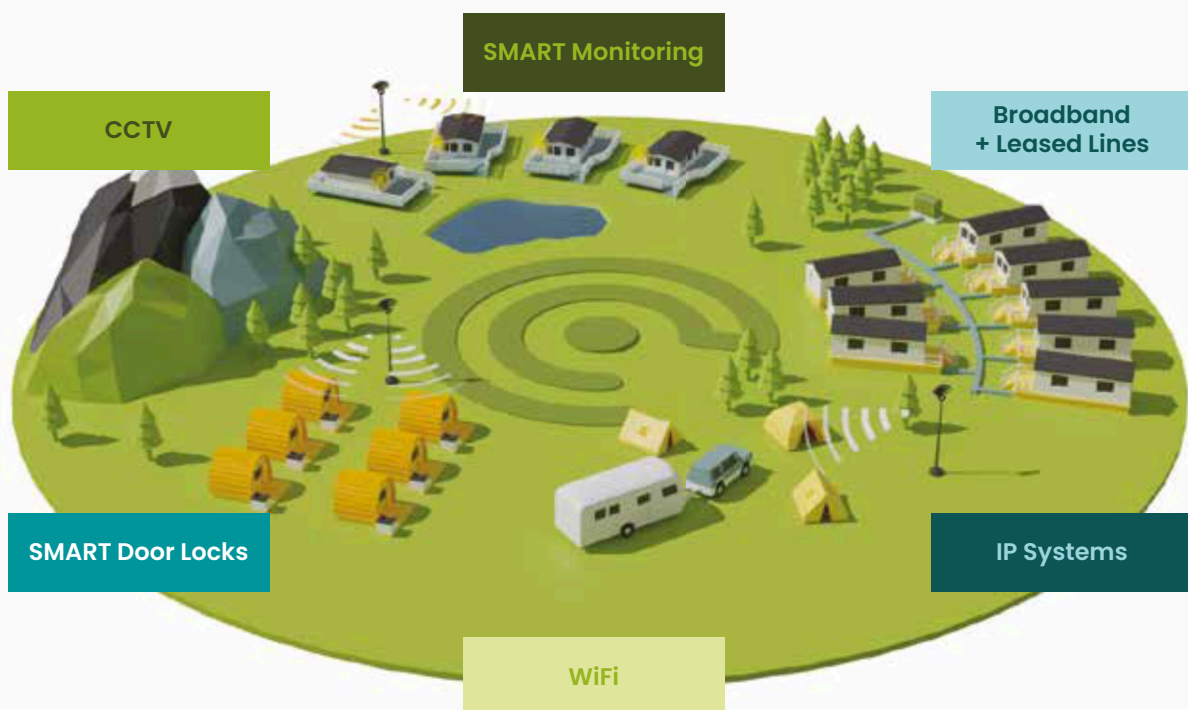
Maintain continuous operations with robust team communication.

### Streamlining

Features designed for timesaving and increased operational efficiency.

### Cost-Efficiency

Utilises your existing internet setup, reducing overhead communication expenses.





# CCTV

Secure your park and guest experience with our dependable CCTV systems, blending the latest technology and unmatched reliability for ultimate peace of mind. Experience the freedom of comprehensive surveillance and dedicated support, ensuring your park and guest safety is always a priority.

## FEATURES OF OUR CCTV SYSTEMS

### **Motion Detection and Privacy Masking**

Activate recording based on movement and customise privacy by masking specified areas.

### **High-Definition Video Quality**

Capture every nuance with crystal-clear imagery.

### **Night Vision**

Keep visibility in absolute darkness with advanced night vision technology.

### **Remote Access**

View your live feed from any device, wherever you might be.



### **Power Over Ethernet (POE) IP Cameras**

Our IP cameras are powered via POE, eliminating the need for electrical sockets at camera locations, simplifying installation and reducing clutter.

### **Custom-Fitted Systems**

Your CCTV setup will be bespoke, designed to integrate seamlessly with the complexity of your site, utilising different device types to suit your specific needs.

### **Scalable Solutions**

Adapt your CCTV system to meet the distinct needs, suitable for all sizes and complexities.



# CCTV

## BENEFITS OF OUR CCTV SYSTEMS

### **Bolstered Security**

Achieve continuous, all-encompassing surveillance to pre-empt threats and ensure guest safety.

### **Dependable Performance**

Depend on our robust systems, engineered to operate non-stop under any circumstances.

### **Straightforward Installation**

Benefit from our expert, seamless security system integration.

### **Peace of Mind**

Rest assured with the most reliable surveillance technology at your fingertips.

### **Intuitive Use**

Navigate your security systems effortlessly with our user-friendly interfaces.

### **Future-Ready Investment**

Our adaptable systems are designed to advance with your security needs, ensuring enduring protection.

### **On-site Engineering Service**

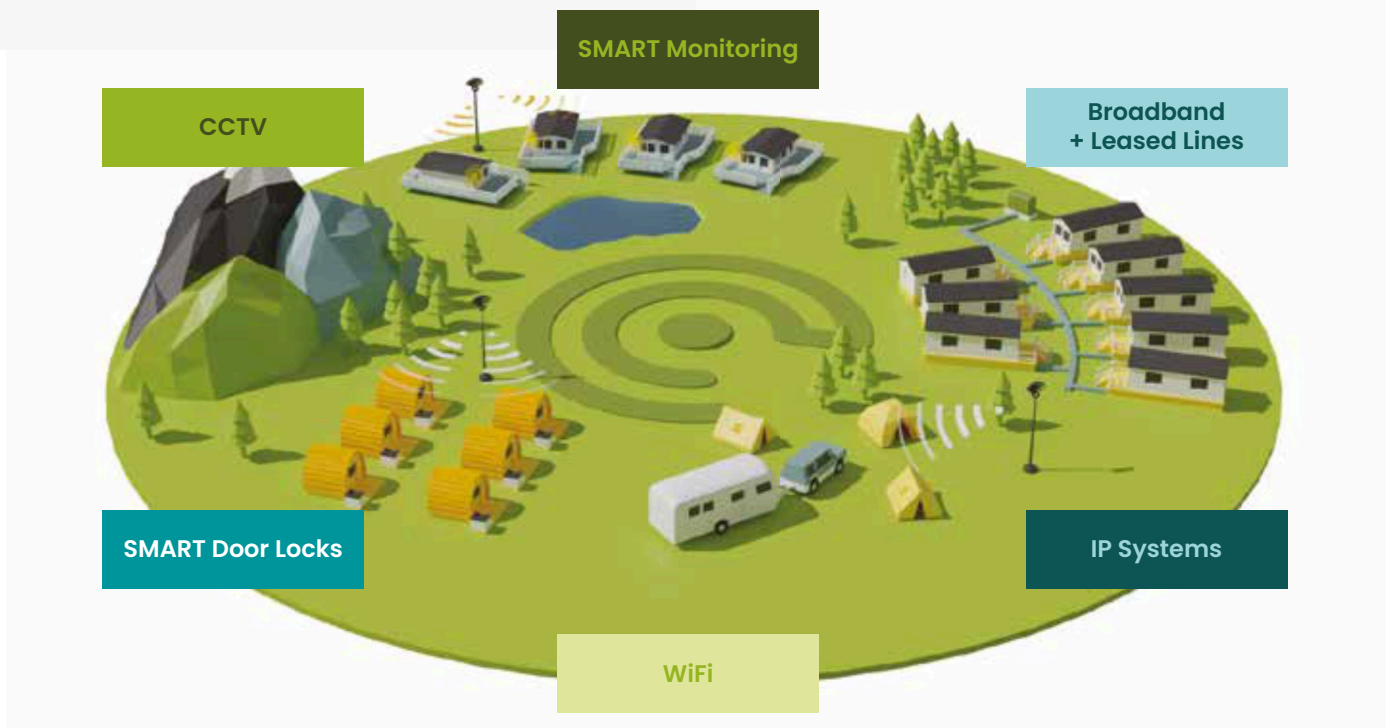
Should the need arise, our trained engineers are at your service with our on-call on-site service.

### **Annual Maintenance**

Our service includes 1 remote health check each year and a comprehensive on-site service to ensure your systems run flawlessly.

### **Warranty Assurance**

We offer a 2-year warranty on all equipment and a 1-year guarantee on workmanship for added confidence in your investment.







# SMART Door Locks

Unlock the potential of seamless guest experiences with Camping Connect's SMART Door Locks, part of our comprehensive SMART Park range.

Designed for the modern holiday park, our SMART Park solutions offer unparalleled convenience, security, and integration, ensuring guests enjoy their stay without the usual hassles associated with traditional access methods.

## FEATURES OF SMART DOOR LOCKS

### Flexible Access

Choose between RFID or PIN systems to offer guests various secure entry options.

### Universal Application

Compatible with all types of doors, ensuring a fit for every accommodation need.

### Easy Installation

Easily replace existing door handles with our SMART Door Locks without requiring extensive modifications.

### Automated Guest Management

Access codes are automatically sent to guests via SMS or email, streamlining the check-in process and reducing wait times.



### Secure Sensitive Park Areas

SMART Door Locks provide tailored access, enhancing safety and streamlining management – for peace of mind and operational efficiency.

### Reprogrammable Cards and Child Wristbands

The perfect blend of convenience and security. Provide child-friendly wristbands for secure, key-free access, while staff benefit from reprogrammable master cards that eliminate the need for traditional keys.



# SMART Door Locks

## BENEFITS OF INTEGRATING SMART DOOR LOCKS

### Enhanced Guest Satisfaction

Provide a smooth, keyless entry experience that modern travellers expect, directly contributing to improved guest reviews and repeat bookings.

### Ensure accountability and Resolve Disputes

Smart Door Locks track entry and exit, providing clear, verifiable records of who accessed your premises and when.

### Schedule Access

Allow cleaners, maintenance & guests access, ensuring your park operates smoothly & securely around the clock.

### Hassle-Free

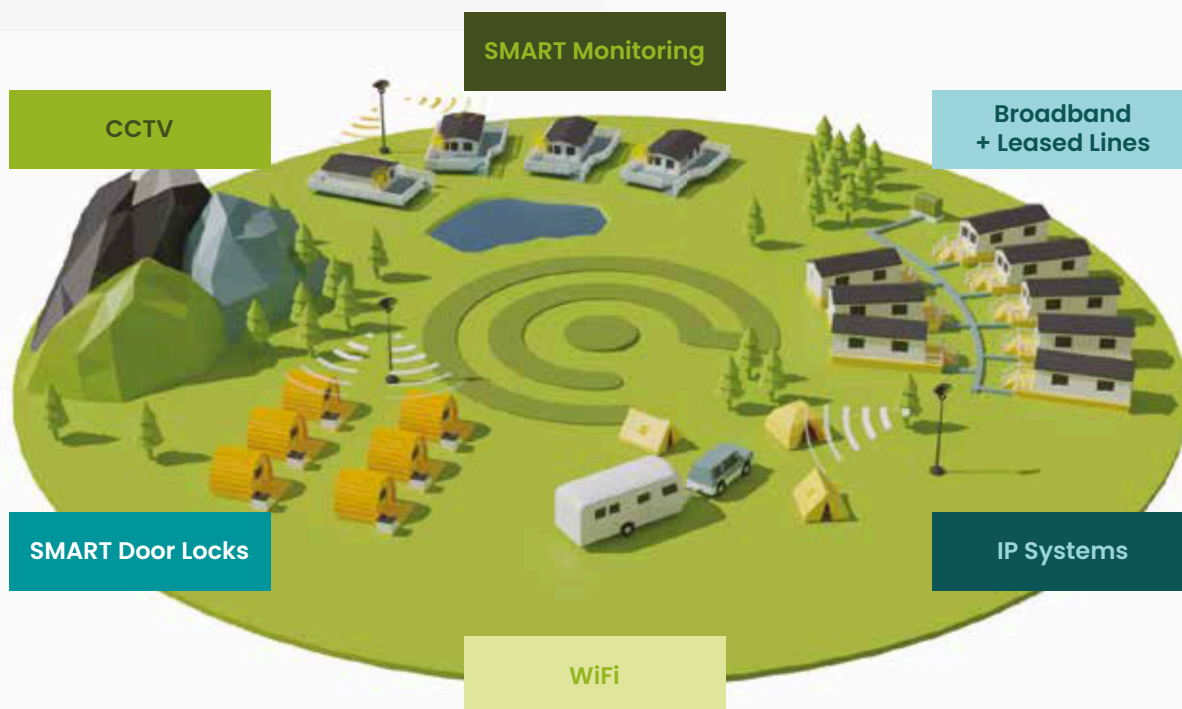
Say goodbye to the inconvenience, costs and security issues of misplaced keys and the worries of keys not being returned. Enjoy peace of mind and a more efficient, secure welcome for guests.

### Increased Security

Advanced encryption & secure networks ensure that only authorised guests can access their accommodations, enhancing overall park security.

### Cost Savings

Our SMART Door Locks are easy to install and offer a long-term, cost-effective solution for access management, with minimal maintenance required.





# SMART Monitoring

Unlock the efficiency of our SMART Monitoring Water + Electricity Management, a key component of our all-encompassing SMART Park series. This cloud-based platform brings the power of remote accessibility to the forefront, transforming how you manage resources. With our system, you'll streamline operations and enjoy the financial benefits of advanced technology.

## FEATURES OF SMART MONITORING WATER + ELECTRICITY MANAGEMENT

### Cutting-edge Automation

Harnesses sophisticated technology to automate, learn, and adapt, making intricate operations straightforward.

### Seamless Integration

Easily incorporates your current infrastructure, enabling effortless updates or fresh installations.

### Constant Monitoring

Provides around-the-clock monitoring of electricity and water to ensure continuous supervision.

### Leak and Wastage Alerts

Features intelligent sensors to identify leaks and wastage, promptly sending alerts to avert resource loss.



### Remote Access and Control

Facilitates real-time observation and management of water and power, including consumption reviews and remote power regulation.

### Cloud-based Platform

Flexible and convenient cloud-based platform that allows for real-time monitoring ensuring you stay connected to your management system, wherever you are.



# SMART Monitoring

## BENEFITS OF SMART MONITORING WATER + ELECTRICITY MANAGEMENT

### Accurate Billing and Record-Keeping

Enhances billing precision and record accuracy, simplifying the re-billing process based on actual usage readings.

### Resource Conservation

Delivers actionable insights for strategic resource usage, pinpointing areas to reduce excess and decrease expenses.

### Automated Efficiency

Alleviates manual tasks through automation, boosting operational productivity.

### Cost Reduction

Achieves cost savings by curtailing waste and maximizing resource efficiency.

### Environmental Protection

Aids sustainability initiatives by promptly addressing leaks and wastage and promoting environmental care.

### Constant Vigilance

Provides peace of mind with 24/7 monitoring and instant alerts, ensuring swift issue resolution.

