

waterlife

live the alternative



To make living on water an alternative and sustainable reality.



Welcome to the Waterlife Group

Our houseboats, floating rooms and marina experiences are for those with an adventurous spirit, who want to break from conformity, those who want to exist in a calmer space and connect with nature, those who seriously consider sustainability and want to make a different choice.

A Waterlife away from the noise, stress and distractions of urban living can be used as your floating home, weekend retreat or office. For commercial users they are perfect as floating hotel rooms or marina retail spaces such as cafes, bars or fitness studios. We can build to order so the possibilities are as far reaching as your ideas.

Find your alternative...

A better lifestyle

A Waterlife can offer so many benefits to your mind, body, family and finances. We've highlighted our favourites and believe these make 'living the alternative' most fulfilling.



Be happier

Water is known to calm us, reduce anxiety and various studies from the around the world have confirmed this. One study published by the BBC in 2022 talks of 'Blue Health' and supports the connection of being around water and increased happiness.



Be fitter

Exercise is not a drive away but literally at your feet. From kayaking to paddle boarding, swimming or even sailing, you don't have to go far to enjoy the clean air and get some exercise. Many locations benefit from great walks and pets love our boats!



Be close

With Waterlife, the connection to nature and the seasons is immediate. Losing time on deck, taking in the sights and sounds of the wildlife can be your new every day.



Be connected

When we remove distractions it allows us to focus on what's important. That can be yourself, your partner or your family. There are of course many ways to connect, however living on the water can create more time and space to simply be together.



Be freer of stuff

Escape the chaos and embrace tranquility by the water. How much 'stuff' do you really need? Our seamless indoor-outdoor spaces promote minimalism, allowing you to experience the freedom of nature in all its splendour.



Be financially freer

Our spaces start at £60k, this makes owning a first or second home within reach for more people. Being less burdened by a large mortgage will provide more financial security and enable greater financial freedom, so you can enjoy spending more on living.



Be more productive

Many customers use their space as their office, as they feel it's more productive. Being on the water often means you are more secluded and have fewer distractions, allowing you to have the space and time to think and focus on work.



Be independent

Waterlodges are suitable for people who live with disabilities. Our floating homes have level spaces throughout, with no thresholds, and have level access from the pontoon. We strive to be inclusive and are members and supporters of the Accessible Waterways Association.

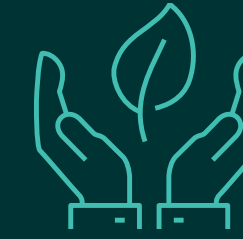
A more sustainable alternative

An alternative way of living can not only have a positive impact for you and your family but can also help reduce your environmental impact and work towards a carbon neutral and nature-positive lifestyle. At Waterlife we are focused on harmonising the relationship between people and planet by creating a greener alternative to living on land and protecting our waterways.



Highly insulated space

Reducing the amount of energy needed to heat the space by using lots of high-density polymer insulation in walls, floor and ceilings, and coated UV-reflective glass for all windows. Further insulation upgrades available.



Less space used

Reducing our physical footprint reduces our carbon footprint due to needing less energy to heat the space. Singles or couples tend to live in buildings which are far larger than they actually need, a Waterlife can reduce their impact on the planet.



Low carbon manufacturing

Our suppliers are constantly striving to create greener manufacturing processes from the structure to fixtures and fittings. Any timber used in our construction is sustainably sourced from carefully managed Scandinavian forests.

Sustainability benefits



Renewable energy options

All models have space for Solar panels and battery storage generating free power throughout the year. By combining solar and battery storage, a typical user can run their boat off-grid for most of the year.



Waste water management

As standard our boats come with internal waste water holding tanks. These can be emptied using conventional marina facilities or we can pre-install biomanagement systems, waste incineration systems or composting toilets, all designed to prevent waste water entering our precious waterways.



Protecting ecosystems

Floating homes cause far less damage than traditional homes, not just in materials and construction emissions, but also to natural habitats. For example, traditional craft rely on toxic paint to prevent the growth of marine life, at Waterlife our products do not require this and actively encourage ecosystem formation.





The UK's leading houseboat company



Waterlodge Oasis



Waterlodge Eden

Experience life on water, without compromising on comfort or space. Our surprisingly affordable houseboat range offers luxury and practicality, allowing you to live a marina lifestyle – without the maintenance!

Our floating homes can be tailored to your exact requirements from bespoke interiors to enhancing their sustainability features. Waterlodge houseboats are known for their unrivalled fore and aft sundecks and roof terraces, which cleverly optimise outside space.

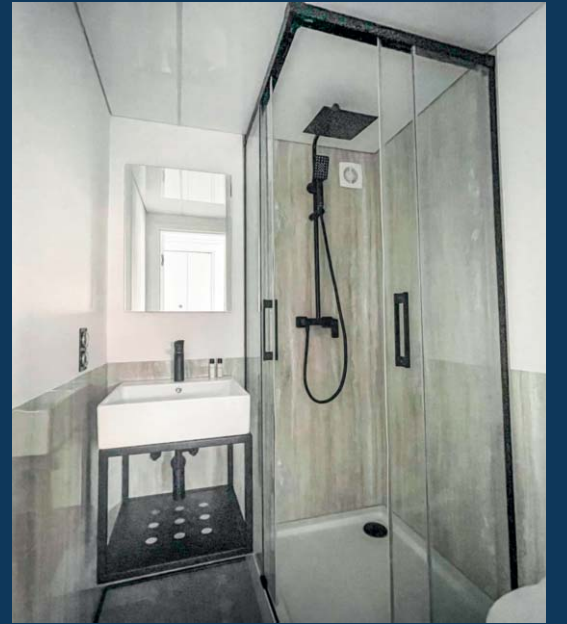
Waterlodge Eden range

Bold and contemporary

Specifications for all models

	Length/m	Width/m	Draught/m	Inside height/m	House size/m	House sqm	Front terrace sqm	Roof terrace/sqm
Eden 8	8	3,06	0,4-0,5	2,08	5 x 3	15	4,8	9
Eden 9	8.4	3,56	0,4-0,5	2,18	5,5 x 3,4	18,7	6,8	10,2
Eden 10	10	4	0,4-0,5	2,18	7 x 3,7	25,9	7,2	11,5
Eden 11	10,8	4,25	0,4-0,5	2,18	7,0 x 3,8	26,6	10,5	16
Eden 11L	12	4,25	0,4-0,5	2,18	8,5 x 3,8	32,3	9,6	24
Eden 12	12	5,05	0,4-0,5	2,18	8,5 x 4,8	40,8	11	25
Eden 14	13,6	4,55	0,4-0,5	2,18	9,5 x 4,3	40,8	11,2	27
Eden 15	15	5,05	0,4-0,5	2,18	11 x 4,8	52,8	13	30





"Everyone loves being on the water and the idea of a marina lifestyle, but few people today have the time or expertise to maintain a traditional boat. Our craft – developed from decades of marine and boating experience – are an accessible entry to a life or holiday home on water."

Ian Watkins, Waterlodge UK Director



Waterlodge Oasis range

Timeless and elegant

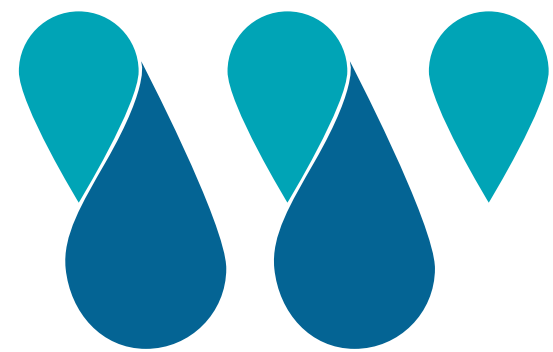
Specifications for all models

	Length/m	Width/m	Draught/m	Inside height/m	House size/m	House sqm	Front terrace sqm	Roof terrace/sqm
Oasis 1	8	3,65	0,4-0,5	2,18	5,5 x 3,4	18,7	6,8	10,2
Oasis 1 Max	9,6	3,85	0,4-0,5	2,18	7,5 x 3,4	25,5	4,5	11,5
Oasis 2	10,8	4,25	0,4-0,5	2,18	7 x 3,8	26,6	10,5	16
Oasis 3	12	4,25	0,4-0,5	2,18	7,0 x 3,8	26,6	10,5	16
Oasis 4	13,6	4,55	0,4-0,5	2,18	9,5 x 3,8	36,1	11,2	27
Oasis 5	12	5,05	0,4-0,5	2,18	8,5 x 4,5	38,2	11	27
Oasis 6	15	5,05	0,4-0,5	2,18	11 x 4,5	49,5	13	36



Example floor plans for Waterlodge
Eden and Oasis houseboats





waterstay



Floating guest accommodation



Waterstay Cube



Waterstay Cabin



Waterstay Little Hut



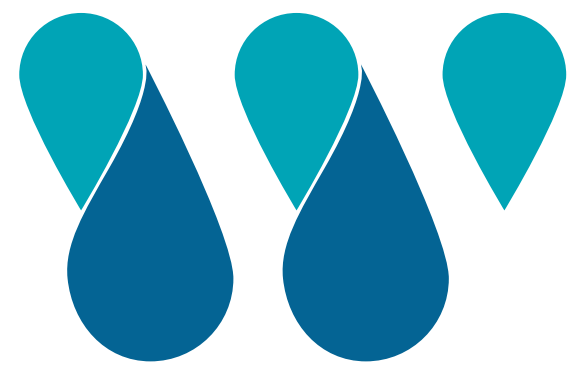
Waterstay Big Hut

Elevate guest experiences and expand your accommodation offerings with our innovative floating rooms – a serene escape unlike any other.

In addition to providing stunning new accommodation options, Waterstay also offer a cost-effective way to increase capacity by utilising an available body of water on site without the delays and complexities of traditional construction.

These unique rooms offer all the comfort and elegance you'd expect with the added magic of guests being able to wake up on the water. Speak to the Waterstay team to explore how you can unlock a new dimension of luxury and efficiency for your hotel or rental business.





waterrex



Floating marina spaces



Waterrex Studio



Waterrex Cafe

Enhance the vibrancy of your marina with our unique floating retail spaces.

Picture a floating cafe where customers savour morning lattes with a buzzing harbour or serene canal view. Envision a floating bar, its lights shimmering on the water, offering a unique marina venue for unforgettable evenings and experiences. The possibilities are endless with Waterrex spaces.

At Waterrex, our team work with you to design innovative floating structures that can transform your marina into a more dynamic destination for land based visitors or boating enthusiasts. From restaurants, bars, and function rooms to shops and even custom floating office and leisure spaces, let us help you create a one-of-a-kind destination that will captivate audiences seeking surprising yet peaceful waterfront memories.





From design to delivery

Discover the essence of luxury living on water with Waterlife's exclusive ranges: Waterlodge, Waterstay, and Waterex. Each vessel is crafted by our manufacturing partners in Poland, renowned as Europe's premier houseboat specialists, and each is meticulously tailored to your desires.

From the moment your order is placed until the final unveiling, our craftsmen uphold stringent quality standards to ensure the realisation of your nautical dreams. Our partnership extends globally, with Waterlodges gracing waters across the world, including the vast expanses of the USA.

Transported with precision by one of the industry's leading boat transport companies, each vessel undergoes thorough inspection upon arrival, guaranteeing she is in pristine condition before she is located into the mooring of your choosing.

With our comprehensive two year overall warranty, coupled with a ten year float warranty and an unrivalled 25 year roof integrity guarantee, your investment is safeguarded for decades to come, offering you peace of mind as you embark on your aquatic adventures.





waterlife

live the alternative

To discover more about Waterlife from costs to our current inland and coastal marina locations, the team behind the group and more insights through our blogs, visit our website. Our social channels are very active and vibrant too so don't forget to follow us on your platform of choice.

We hope to hear from you soon and get you one step closer to living the alternative!

mywaterlife.com



waterlifeuk



waterlife_uk



waterlifeuk

Your dealer