



Getting to grips with Natural Capital

CSX use high quality data analysis to measure Natural Capital. Enabling landowners to receive a financial return on their natural assets from businesses independently verifying their climate actions.

Repeatable high resolution drone survey assessments allow the delivery of Natural Capital offsets with quality, transparency and integrity of measurement & audit.

Carbon Credits

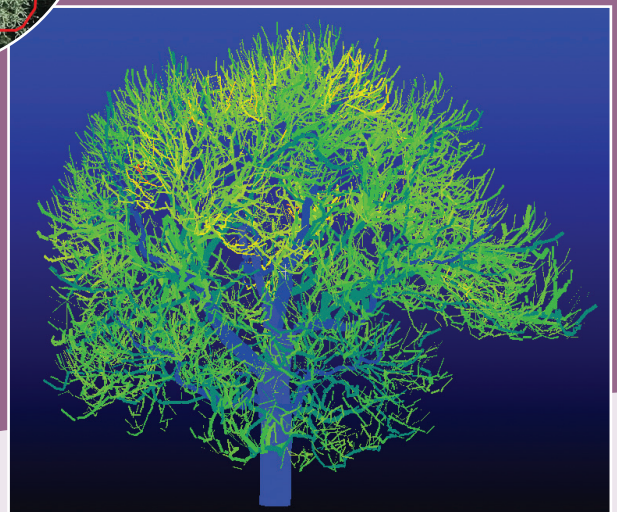
Carbon credits represent a volume of carbon stored within woodland or peatland.

Advancing science underpinning the CSX methodology is combined with high resolution Earth Observation data to provide a more accurate assessment of the carbon sequestered/stored.



CSX's drone imagery and machine learning pipeline makes assessing Carbon Volume easy, quick and scalable.

CSX's scientific and QA protocols include woodland assessments using Terrestrial Laser Scanning. Each individual tree is scanned and leads to a quantitative structure model for volume assessment.



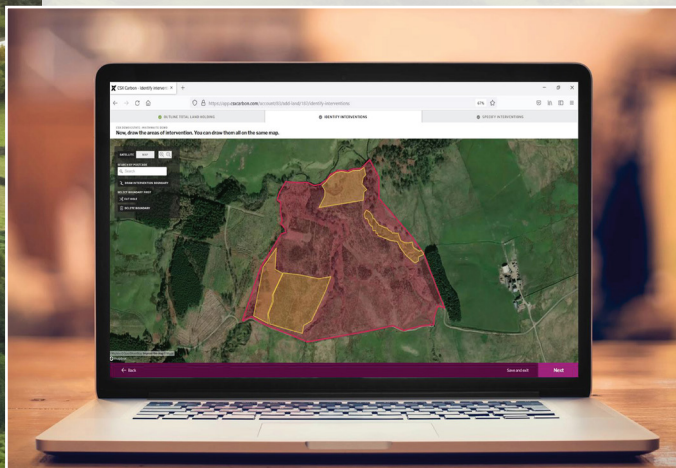
www.csxcarbon.com

Email: contact@csxcarbon.com | Call: 01609 786655

Biodiversity Net Gain – BNG

- BNG uses improvements in vegetation due to changes in land management as a method of assessing the biodiversity increase.
- Landowners can use their land to generate BNG units and become an off-site provider for BNG.
- BNG can empower land owners to obtain a fair financial return from environmental management of their land.
- BNG assessments must comply with UK Government's DEFRA Metric and follow the Local Planning Authority's Local Nature Recovery Strategy.
- Documentation requirements include Baseline Assessments, Habitat Management & Monitoring Plans and Section 106 agreements.
- CSX have liaised and worked with DEFRA & LPAs throughout the development of BNG Pilots and now policy delivery.
- High resolution, repeatable, drone surveys, at less than 1cm Ground Sampling Distance for imagery, provides quality, transparency and integrity of monitoring and audit without subjectivity.

The Platform



The cost-effective CSX platform allows you to plan, monitor, and track sustainable interventions on land.

CSX provide a cost effective platform to allow the trading of natural capital between the supply and the demand.

www.csxcarbon.com

Email: contact@csxcarbon.com | Call: 01609 786655

