



**HIGHLAND
HOLIDAYS**

Holiday Home Ownership

Own a slice of paradise
in the Scottish Highlands...



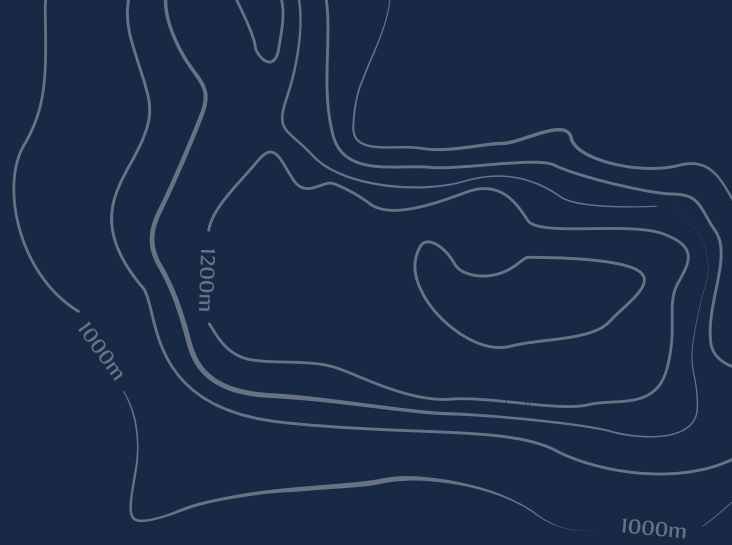
Sales Brochure 2024/2025





**HIGHLAND
HOLIDAYS**

Hello!



We're Highland Holidays, a family owned Scottish holiday park business led by the Campbell's: Andrew, Emily and the wee ones, Douglas and Eilidh.

With a wealth of experience in creating exceptional holiday parks, Andrew and Emily have poured their hearts into crafting stunning destinations where guests can create holiday memories together.

Family Hospitality

As a family-run business with years of experience in the Scottish Holiday Park industry, Highland Holidays embraces the essence of togetherness. We understand the value of family time and the magic of creating shared experiences. Our mission is to provide you with family holiday memories to last forever.

Whether you holiday with us a few times a year, or all-year round in your home away from home, we look forward to welcoming you with a friendly smile and a warm Scottish hello.

Best wishes,

Highland Holidays



HIGHLAND
HOLIDAYS

Stunning Holiday Parks

Embark on an adventure like no other
as you explore our trio of holiday parks:

Our first holiday park – Ben Nevis Holiday Park – in Fort William, opened in 2020, right before the world faced its first lockdown. During this challenging period, Andrew and Emily dedicated themselves to transforming the park into what it is today. From the creation of a new reception area, shop, cafe, toilets, and shower block, to the addition of brand new pods and luxurious hot tub lodges, the evolution has been remarkable.

In 2022 we proudly welcomed Tyndrum Holiday Park (formerly Pinetrees Caravan Park) on the West Highland Way into the Highland Holidays family, with renovations aplenty, and the introduction of stunning new hot tub pods overlooking the gold-filled stream. This coincided with our brand-new head office in Biggar opening its doors, signalling the growth of the company.

Completing our trio of holiday parks is Oban Holiday Park (previously known as Oban Caravan & Camping Park), which opened in July 2023 – offering even more choice for Highland Holidays customers. This stunning hilly park overlooks the Isle of Kerrera with breathtaking sea views – the perfect setting for holidaymakers and owners alike who can choose from waterfront hot tub lodges or simply a quiet touring pitch.



BEN NEVIS,
FORT WILLIAM



TYNDRUM



OBAN



GLASGOW

BEN NEVIS HOLIDAY PARK

YOUR BASECAMP TO ADVENTURE



ALL OUR
PARKS ARE
PET FRIENDLY!



Stay in the shadow of Ben Nevis with the River Lochy running alongside. Choose to stay in our hot tub lodges, standard lodges, caravans, pods – or why not pitch up your tent for the perfect touring or camping break! We also have a fabulous on site café and takeaway.

TYNDRUM HOLIDAY PARK

YOUR PATH TO THE WEST HIGHLANDS



At the halfway point of the West Highland Way walking route, you'll find Tyndrum Holiday Park, offering seasonal and short stay touring pitches, a camping field, handy hiker pods and a selection of stunning hot tub, river facing glamping pods.

OBAN HOLIDAY PARK

YOUR GATEWAY TO THE ISLES



This lush green holiday park at Gallanachmore covers 340 acres set by the sea with magnificent views to the Isle of Kerrera. Discover waterfront hot tub lodges for sale, and a variety of holiday rental accommodation from hot tub lodges and pods, to caravans and pitches.



EDINBURGH

Whether you're a family, solo explorer, couple or group of friends, Highland Holidays is for everyone, from adventurers, hikers and outdoor lovers, to hot tub soakers, campers and caravanners!

BEN NEVIS HOLIDAY PARK

YOUR BASECAMP TO ADVENTURE

An award-winning holiday park in the shadows of Ben Nevis...

We are located just a 5 minute drive from the outdoor capital of the UK, Fort William. Whether you want to camp under the stars or relax in one of our bubbling hot tub lodges, we have different types of accommodation to suit everyone.



Scan me
to find out
more!



PARK FEATURES

- Pet friendly
- Located beside the River Lochy
- Impressive views of Ben Nevis
- Café & Takeaway on-site
- Reception and shop on-site
- Laundry facilities
- Toilet and shower block
- Picnic benches
- Playground
- Free WiFi

WHERE TO FIND US

Ben Nevis Holiday Park
Camaghael
Fort William
PH33 7NF

Telephone: 0333 188 1930
Email: bennevis@highlandholidays.com



TYNDRUM HOLIDAY PARK

YOUR PATH TO THE WEST HIGHLANDS

A peaceful park overlooked by pine trees and breathtaking surroundings. Tyndrum Holiday Park is your path to the West Highlands.

Whether you're hiking along the West Highland Way, panning for gold in the stream, or simply pitching up for a peaceful stay - Tyndrum Holiday Park is your perfect park for passing through the Highlands, or holidaying all year round. We have riverside hot tub pods, hiking pods, touring and camping pitches. We have a small group of holiday home owners at the park who stay in on-site lodges.



Scan me
to find out
more!



PARK FEATURES

- Pet friendly
- Located on the West Highland Way (halfway point)
- Reception and shop on-site
- Laundry facilities
- Toilet and shower block
- Playground
- Free WiFi

WHERE TO FIND US

Tyndrum Holiday Park
Tyndrum
Stirling
FK20 8RY

Telephone: 0333 188 1930
Email: tyndrum@highlandholidays.com



OBAN HOLIDAY PARK

YOUR GATEWAY TO THE ISLES

Prime waterfront location overlooking the Isle of Kerrera, just a short drive from the seafood capital, Oban Holiday Park is your gateway to the Isles.

Oban Holiday Park is stunningly set by the sea in the West Highlands, overlooking the Isle of Kerrera. With its waterfront, high-spec hot tub lodges and selection of accommodation from caravans to pods, this flagship park is a dream for holiday home owners. Whether you love seafood or want to explore the isles, the town of Oban has everything you could need and is only a wee drive down the scenic road.



**Scan me
to find out
more!**



PARK FEATURES

- Pet friendly
- Breathtaking views
- Reception and shop on-site
- Laundry facilities
- Toilet and shower block
- Playground
- Free WiFi

WHERE TO FIND US

Oban Holiday Park
Gallanachmore Farm
Gallanach Road
Oban
Argyll
PA34 4QH

Telephone: 0333 188 1930

Email: oban@highlandholidays.com





HIGHLAND
HOLIDAYS

Luxury Holiday Homes for Sale

**Imagine owning a
piece of paradise...**

**At Highland Holidays, we now
offer the opportunity to own your
slice of heaven.**

Our holiday parks are located in some of the most incredible locations in Scotland and our luxurious lodges and caravans provide the perfect home-from-home, allowing you to embrace the beauty of the highlands every day.

Indulge in a cosy caravan in the countryside or escape to your very own hot tub lodge, complete with meticulous design and thoughtful features, plus unrivalled scenic views of water and land.





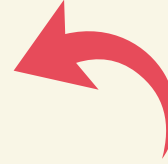
1000m



PRESTIGE

HAMPTON LODGE

2023



SCAN TO VIEW
FULL SPECIFICATION
AND PRICE ONLINE



PRIVATE
HOT TUB



3
BEDROOMS



SEA
VIEWS

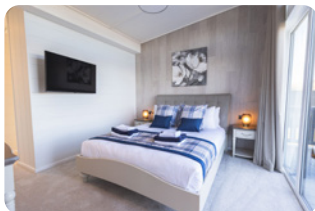


DETAILS

The Hampton Holiday Home is a great option for families looking to find their home away from home.

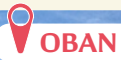
This stylish, spacious lodge comes fully equipped with everything you need to make your stay comfortable.

Kick back with family and friends after a long day of exploration in this stunning lounge. Kitted out with vaulted ceilings, and V90 Horizontal feature wall. This communal area is perfect for entertaining friends and family, with an electric fireplace to keep you all cosy.



HIGHLIGHTS

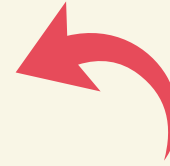
- ◇ Stunning Waterside Location
- ◇ Private Sunken Hot Tub
- ◇ Pet Friendly Park
- ◇ 3 Bedrooms
- ◇ Brand New Holiday Home
- ◇ Open Plan Living Area
- ◇ Wraparound Decking
- ◇ Fully fitted kitchen appliances – five burner gas hob, oven, microwave, dishwasher, wine cooler, fridge/freezer & washing machine.
- ◇ Holiday Park Open All Year



OAKGROVE

TAMARACK LODGE

2023



SCAN TO VIEW
FULL SPECIFICATION
AND PRICE ONLINE



PRIVATE
HOT TUB



2
BEDROOMS



SEA
VIEWS



DETAILS

The Tamarack lodge showcases a recessed glazed entry with peaked roof-line.

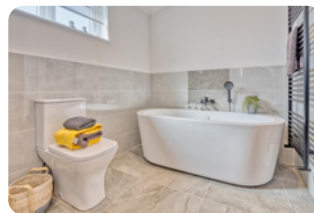
Upon stepping into the lodge you will find yourself in a semi-enclosed entrance hall with the utility space, a spacious open-planned living, dining and kitchen area.

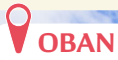
Exquisite design features to the master bedroom include a hidden en-suite bathroom, whilst the main bathroom boasts a free standing bath and an enclosed shower.

With underfloor heating in the bathroom and en-suite you really can relax in luxury.

HIGHLIGHTS

- ◇ Stunning Waterside Location
- ◇ Private Hot Tub
- ◇ Pet Friendly Park
- ◇ 2 Bedrooms
- ◇ Brand New Holiday Home
- ◇ Open Plan Living Area
- ◇ Wraparound Decking
- ◇ Lux rooflights
- ◇ Underfloor heating in bathroom
- ◇ Holiday Park Open All Year



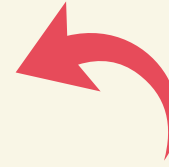


PRESTIGE

CASA DI LUSSO

LODGE

2023



SCAN TO VIEW
FULL SPECIFICATION
AND PRICE ONLINE



PRIVATE
HOT TUB



3
BEDROOMS



SEA
VIEWS



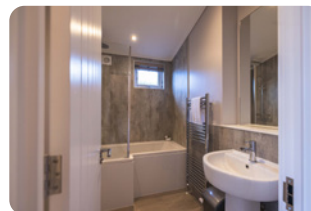
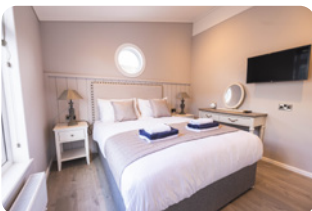
DETAILS

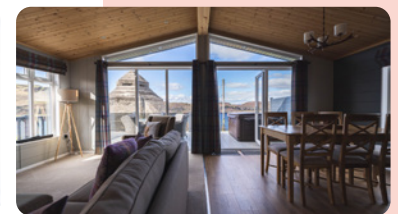
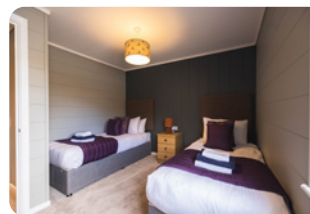
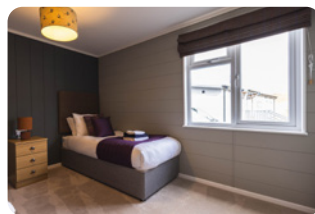
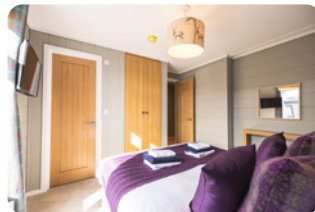
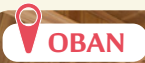
Literally translated as 'house of luxury', the Casa Di Lusso makes for a modern, stylish, and luxurious home away from home.

Kick back with family and friends after a long day of exploration in this stunning lounge area, kitted out with rough sawn timber feature walls, and floor to ceiling cathedral style windows to let light in. This communal area is perfect for entertaining friends and family, with a freestanding electric fireplace to keep you all cosy.

HIGHLIGHTS

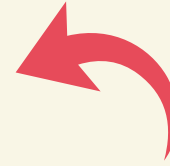
- ◇ Stunning Waterside Location
- ◇ Private Hot Tub
- ◇ Pet Friendly Park
- ◇ 3 Bedrooms
- ◇ Brand New Holiday Home
- ◇ Open Plan Living Area
- ◇ Wraparound Decking
- ◇ American Style Fridge Freezer
- ◇ Freestanding feature electric fireplace
- ◇ TV & USB sockets
- ◇ Holiday Park Open All Year





PRESTIGE FORESTERS LODGE

2023



SCAN TO VIEW FULL SPECIFICATION AND PRICE ONLINE



PRIVATE HOT TUB



3 BEDROOMS



SEA VIEWS

DETAILS

The Forester Holiday Home transports you into a luxurious, cosy, countryside retreat.

Escape to the countryside in your very own home from home.

Kick back with family and friends after a long day of exploration in this stunning lounge. Kitted out with vaulted ceilings, and V90 Horizontal feature wall. This communal area is perfect for entertaining friends and family, with an electric inglenook fireplace. With a vaulted timber ceiling, exposed beams and a beautiful feature fireplace it's easy to imagine returning home from a long countryside walk

HIGHLIGHTS

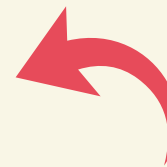
- ◇ Stunning Waterside Location
- ◇ Private Hot Tub
- ◇ Pet Friendly Park
- ◇ 3 Bedrooms
- ◇ Brand New Holiday Home
- ◇ Open Plan Living Area
- ◇ Wraparound Decking
- ◇ Dressing table & stool
- ◇ Solid oak freestanding wardrobe, bedside cabinets & chest of drawers
- ◇ Holiday Park Open All Year



ASPIRE

AURORA LODGE

2023



SCAN TO VIEW
FULL SPECIFICATION
AND PRICE ONLINE



PRIVATE
HOT TUB



3
BEDROOMS



SEA
VIEWS

DETAILS

Introducing our new Aspire Aurora bespoke lodge – your exquisite new 3-bedroom luxury lodge with a hot tub at Oban Holiday Park in the majestic Scottish Highlands.


Elevate your home away from home experience to unprecedented heights with "Aspire Bespoke," a jewel nestled within the captivating landscapes of the Scottish Highlands.

HIGHLIGHTS

- ◇ Stunning Waterside Location
- ◇ Private Hot Tub
- ◇ Pet Friendly Park
- ◇ 3 Bedrooms
- ◇ Brand New Holiday Home
- ◇ Open Plan Living Area with L-Shaped Sofa
- ◇ Feature TV Wall
- ◇ Wraparound Decking
- ◇ Feature bath and dual shower in family bathroom
- ◇ Holiday Park Open All Year

STUNNING WATERSIDE LOCATIONS WITH INCREDIBLE VIEWS



 **OBAN**



ABI 2023

AMBLESIDE



PET FRIENDLY PARK



2 BEDROOMS



INCREDIBLE VIEWS

DETAILS

Introducing the ABI Ambleside 2023...

Generously designed with a fine dining kind of life in mind, drenched in sunshine, with a smattering of traditional wooden touches and opulent fabric finishes, it's a deliciously delightful stay.



HIGHLIGHTS

- ◇ Incredible Views
- ◇ Pet Friendly Park
- ◇ 2 Bedrooms
- ◇ Log burner style electric fire
- ◇ Open Plan Living Area
- ◇ USB Sockets
- ◇ Full Front Sliding Doors
- ◇ Matt finish Chateaux grey aluminium cladding
- ◇ Optional Decking Available
- ◇ Holiday Park Open All Year

 **OBAN**



ABI 2023

AMBLESIDE



PET FRIENDLY PARK



3 BEDROOMS



INCREDIBLE VIEWS

DETAILS

Cook up happiness here in the ABI Ambleside 3 bedroom lodge.

Generously designed with a fine dining kind of life in mind, drenched in sunshine, with a smattering of traditional wooden touches and opulent fabric finishes, it's a deliciously delightful stay.



HIGHLIGHTS

- ◇ Incredible Views
- ◇ Pet Friendly Park
- ◇ 3 Bedrooms
- ◇ Dressing tTable with Stool
- ◇ Open Plan Living Area
- ◇ USB Sockets
- ◇ Full Front Sliding Doors
- ◇ Matt finish Chateaux grey aluminium cladding
- ◇ Optional Decking Available
- ◇ Holiday Park Open All Year

OBAN



SCAN TO VIEW FULL SPECIFICATION AND PRICE ONLINE

ABI 2023

WINDERMERE



PET FRIENDLY PARK



3 BEDROOMS



INCREDIBLE VIEWS

DETAILS

This firm favourite and homely hideaway is back, now in a dusky cornflower blue.

With a thoughtful kitchen design and every curve of the sofa redesigned for maximum ahhh-factor on every slump, it's primed for laid-back living.



HIGHLIGHTS

- ◆ Incredible Views
- ◆ Pet Friendly Park
- ◆ 3 Bedrooms
- ◆ uPVC Skirting Included
- ◆ Open Plan Living Area
- ◆ USB Sockets
- ◆ Electric Fire
- ◆ Under-bed Storage
- ◆ Optional Decking Available
- ◆ Holiday Park Open All Year

OBAN



SCAN TO VIEW FULL SPECIFICATION AND PRICE ONLINE

ABI 2023

INGLETON



PET FRIENDLY PARK



2 BEDROOMS



INCREDIBLE VIEWS

DETAILS

The 2-bedroom Ingleton is made for slow mornings, why not enjoy a second cup of coffee and savour the conversation at the breakfast bar?

Thoughtful design ideas and chic modern touches, from entrance seat and storage to hotel-inspired comforts, mean you can live every day away in style.



HIGHLIGHTS

- ◆ Incredible Views
- ◆ Pet Friendly Park
- ◆ 2 Bedrooms
- ◆ Free-Standing Dining Furniture
- ◆ Open Plan Living Area
- ◆ USB Sockets
- ◆ Full Front Sliding Doors
- ◆ Under-bed Storage
- ◆ Optional Decking Available
- ◆ Holiday Park Open All Year



OBAN



SCAN TO VIEW FULL SPECIFICATION AND PRICE ONLINE

SWIFT 2022

VENDEE



PET FRIENDLY PARK



2 BEDROOMS



INCREDIBLE VIEWS

DETAILS

With its contemporary cottage feel, the stunning Swift Vendee comes with Acanthium soft furnishings, enhancing the range's on-trend interiors.

Be completely at home in the open-plan living area, designed for the whole family to spend time together whether cooking, dining or lounging on the two and three-seater sofas.



HIGHLIGHTS

- ◆ Incredible Views
- ◆ Pet Friendly Park
- ◆ 2 Bedrooms
- ◆ Brand New Holiday Home
- ◆ Open Plan Living Area
- ◆ Fusion galvanised chassis with finish warrantied for 10 years
- ◆ Condensing gas combi-boiler central heating and hot water system
- ◆ Heated towel rails
- ◆ Choose from a selection of pitches



OBAN



SCAN TO VIEW FULL SPECIFICATION AND PRICE ONLINE

VICTORY 2022

PARKVIEW



PET FRIENDLY PARK



2 BEDROOMS



INCREDIBLE VIEWS

DETAILS

We know that real life happens. And the Parkview is ready for anything. You won't experience another lodge like it.

We're always looking to push creative boundaries and flip 'traditional' design on its head. Feature walls are completely unique to the Parkview and we've also used more pendant lighting in this lodge, to give it a really modern yet warm feel. A well-equipped utility room is the perfect addition, and the separate dressing area adjacent to the master bedroom is stylish and practical.

HIGHLIGHTS

- ◆ Incredible Views
- ◆ Pet Friendly Park
- ◆ 2 Bedrooms
- ◆ Brand New Holiday Home
- ◆ Open Plan Living Area
- ◆ Velux Window
- ◆ Wine Cooler
- ◆ Integrated Washing Machine
- ◆ Choose from a selection of pitches
- ◆ Holiday Park Open All Year

 TYNDRUM



SCAN TO VIEW FULL SPECIFICATION AND PRICE ONLINE

SWIFT 2022

VENDEE



PET FRIENDLY PARK



2 BEDROOMS

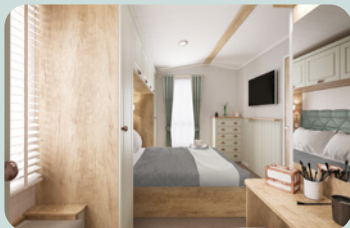


INCREDIBLE VIEWS

DETAILS

With its contemporary cottage feel, the stunning Swift Vendee comes with Acanthium soft furnishings, enhancing the range's on-trend interiors.

Be completely at home in the open-plan living area, designed for the whole family to spend time together whether cooking, dining or lounging on the two and three-seater sofas.



HIGHLIGHTS

- ◇ Incredible Views
- ◇ Pet Friendly Park
- ◇ 2 Bedrooms
- ◇ Brand New Holiday Home
- ◇ Open Plan Living Area
- ◇ Fusion galvanised chassis with finish warranted for 10 years
- ◇ Condensing gas combi-boiler central heating and hot water system
- ◇ Heated towel rails
- ◇ Choose from a selection of pitches

 OBAN



SCAN TO VIEW FULL SPECIFICATION AND PRICE ONLINE

VICTORY 2022

LAKEWOOD



PET FRIENDLY PARK



2 BEDROOMS



INCREDIBLE VIEWS

DETAILS

The Lakewood has been designed to be as stylish as it is functional.

As soon as you walk into the entrance hall, you'll be bathed in natural light and in awe of the stylish features and furnishings. Our interior design team have thought of everything with neutral tones throughout to create a warm and inviting space, and contemporary accents to make sure your home stays on top of the trends.



HIGHLIGHTS

- ◇ Incredible Views
- ◇ Pet Friendly Park
- ◇ 2 Bedrooms
- ◇ Brand New Holiday Home
- ◇ Open Plan Living Area
- ◇ Velux Window
- ◇ Integrated Appliances
- ◇ French Doors
- ◇ Choose from a selection of pitches



TYNDRUM



SCAN TO VIEW FULL SPECIFICATION AND PRICE ONLINE

VICTORY 2022

LAKEWOOD



PET FRIENDLY PARK



2 BEDROOMS



INCREDIBLE VIEWS

DETAILS

The Lakewood has been designed to be as stylish as it is functional.

As soon as you walk into the entrance hall, you'll be bathed in natural light and in awe of the stylish features and furnishings. Our interior design team have thought of everything with neutral tones throughout to create a warm and inviting space, and contemporary accents to make sure your home stays on top of the trends.



HIGHLIGHTS

- ◆ Incredible Views
- ◆ Pet Friendly Park
- ◆ 2 Bedrooms
- ◆ Brand New Holiday Home
- ◆ Open Plan Living Area
- ◆ Velux Window
- ◆ Integrated Appliances
- ◆ French Doors
- ◆ Choose from a selection of pitches

MEET THE MANUFACTURERS



ABI

ABI is a UK holiday home and static caravan manufacturer, who have been building exceptional quality hand-crafted holiday homes for over 40 years, with something to suit a range of budgets.



ASPIRE

Aspire Park & Leisure Homes Ltd was born from a passion for creating beautiful, functional homes and they host a stunning selection of lodges and caravans.



OAKGROVE

Oakgrove was formed in 1998, by two brothers Noel and Eamon Flanagan. Their philosophy has always been to manufacture in a professional and approachable manner with quality at the top of mind.



PRESTIGE

PRESTIGE

Prestige is the UK's leading holiday lodge and residential park home manufacturer, having built an admirable reputation for design, build, quality, and service.



SWIFT

SWIFT

With a combination of home-from-home comforts and designer touches, Swift Holiday Homes offer one of the most stylish, thermally efficient and robust body structures on the market. Renowned for their quality manufacture and innovative designs, and with multiple layouts across multiple ranges to choose between, there's a static caravan (or lodge) layout to suit everyone.



VICTORY LEISURE HOMES

VICTORY

One of the UK's leading holiday home manufacturers, Victory lodges combine the perfect blend of high quality design and contemporary features with furnishings that have been hand-picked to perfection.



HIGHLAND
HOLIDAYS

Your Step-By-Step Guide to Ownership

Your dream holiday home could be closer than you think.

WHAT NEXT?

Arrange a chat with our friendly team to find out more and book your **exclusive** VIP Tour.

1 VIRTUAL TOUR

Give us a call on 0333 188 1930 to arrange a virtual tour (on WhatsApp/ Facebook/ Skype/ Zoom/ Teams, you name it) if you want to find out more before you visit us in person.

2 YOUR VIP TOUR

Your friendly guide will take you around the park, showing you the range of holiday homes and facilities on offer, along with providing more information on the local area and the benefits of joining the Highland Holidays community. We'll also be on hand to answer any questions you may have.

Following the tour, you're welcome to stay around and explore further at your leisure. Our team will be more than happy to recommend nearby attractions if you'd like to make a day of it!

3 FOUND THE ONE?

We'll provide a no-obligation quote for your dream home and if you're happy, we'll move forward with the rest of the paperwork.

When you're ready to move into your new home-from-home, we'll be ready to welcome you with open arms.

4 THERE'S EVEN MORE BENEFITS...

You will be well looked after on-site and we're constantly developing our holiday parks, adding new facilities and making our home owners' experience more enjoyable. Not only that, but we've teamed up with some of our favourite local businesses to offer exclusive 'Explorer Rewards' discounts.

5 ENJOY YOUR NEW HOLIDAY HOME!

Time to sit back, relax and enjoy your new holiday home. If there's anything we can help with, our team are always on-site and happy to help. We'd love to meet you at our owners' events, where you can socialise with fellow home owners and enjoy the park together.

We hope to see you again soon and start making holiday memories together.

Scan here for more information on our easy step by step guide through the sales process





**HIGHLAND
HOLIDAYS**

Explorer Rewards

When you buy with Highland Holidays, you get to enjoy a full range of benefits, including access to exclusive local savings through our Explorer Rewards scheme.

Whether you fancy a loch cruise, a trip to a historic castle or a spot of lunch, we've got you covered, with a whole host of discount partners throughout the Scottish Highlands.

Some of our partners...

- LandD Adventures
- Gelatoburger
- Oban Bike Hire
- Coastal Connection
- Oban Explorer Centre
- Inveraray Castle



To find out more about our Explorer Rewards, or for a full list of partners for each park, head to www.highlandholidays.com and check out the explorer reward section in each park – or scan each of the QR codes below!

**BEN NEVIS
HOLIDAY PARK**



**TYNDRUM
HOLIDAY PARK**



**OBAN
HOLIDAY PARK**





BEN NEVIS LAND ADVENTURES



OBAN OBAN EXPLORER CENTRE



Photo by Winston www.on Unsplash

TYNDRUM INVERARY CASTLE



**HIGHLAND
HOLIDAYS**

Time for a wee blether?



0333 188 1930



sales@highlandholidays.com



highlandholidays.com