

Energy & Waste.



Expertly Done.

Expertly Done.

Since 2003, we've been solving planning and development problems for our clients successfully, and we're really proud of that. Even though our work is complex, what we deliver for our clients is very simple: we deliver results.

Everything we do is Expertly Done.

Expertly Done is the bar that we hold ourselves to that guides us to constantly push what's possible for our clients.

Expertly Done sums up our collaborative approach that delivers excellence and expertise at every step of the journey.

Expertly Done sums up what we deliver to our clients. It's about making sure our clients are always moving towards success.

We know there's no one-size-fits-all approach. That's why we always start by listening to your goals – getting a real understanding of what's important to your project. Partnering with us means that you know that you're working with people who you can trust, and who have your best interests at heart.

Our services span the entire project process from planning through to design and delivery, ensuring we achieve the best results. Our integrated teams combine experience and expertise from a variety of sectors as well as both national and regional knowledge. This approach has seen us become a leading development consultancy. We have worked on some of the UK's highest profile projects, developing excellent relationships with our clients and winning awards in the process.

No matter the project, no matter the challenge, you can rely on us to find solutions, to get things done, to get things **Expertly Done**.

One of the reasons why we love what we do is that we get to do it across such a variety of sectors, and with lots of different people. We work with landowners, developers, housebuilders, local authorities, estates, and private clients offering a wide selection of expertise, which covers the entire development process.

We have a team of highly experienced experts in the energy sector covering developments ranging from solar power, battery storage, electric vehicle charging infrastructure, tidal power, energy from waste and on and offshore wind including the associated infrastructure.

Our core services include:

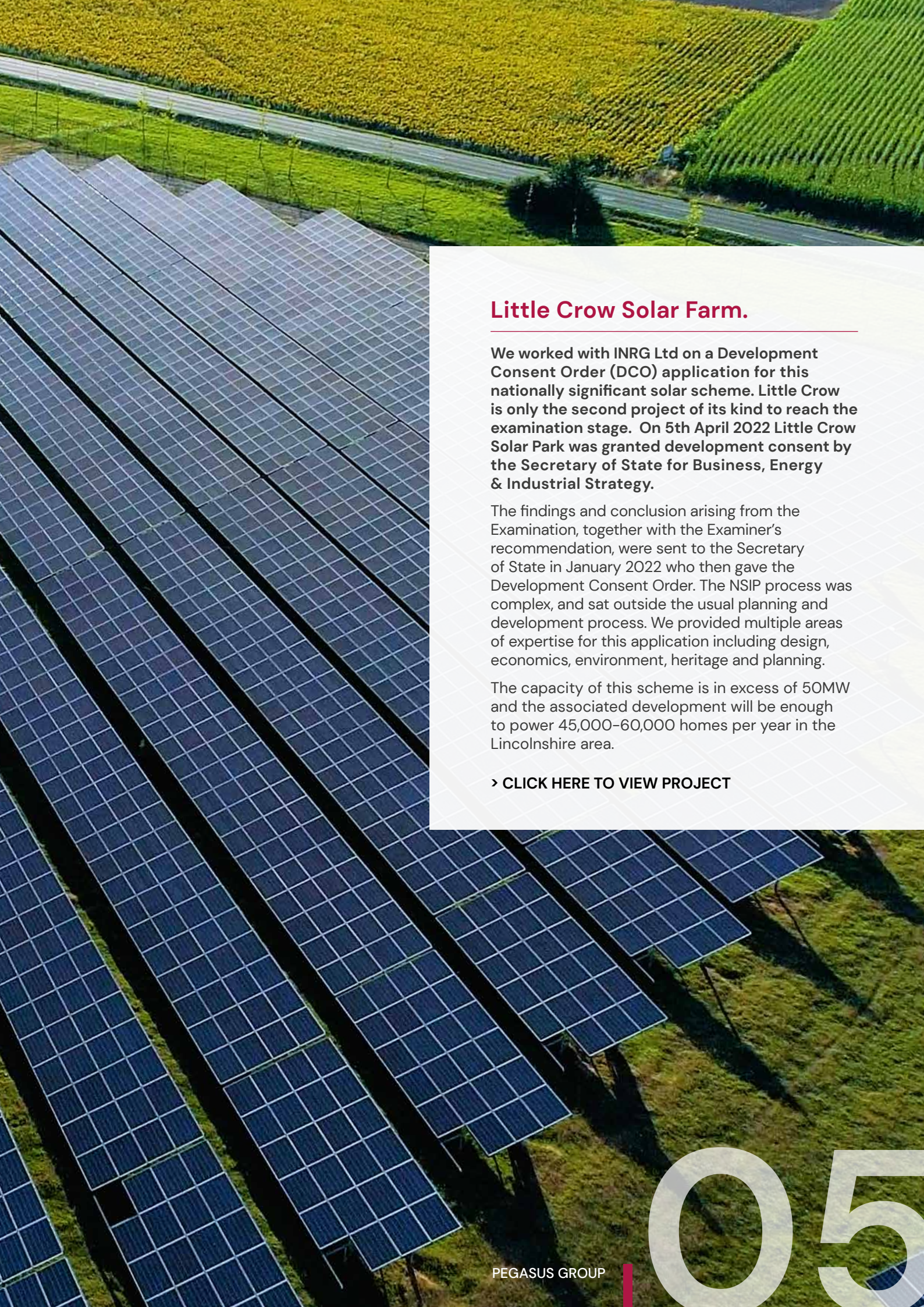
- Contract administration
- Detailed landscape design
- Environmental Impact Assessment (EIA)
- Environmental management plans
- Expert witness & evidence for public inquiries
- Landscape & Visual Impact Assessment (LVIA)
- Planning applications
- Site assessment & feasibility studies
- Site identification and acquisition
- Stakeholder & public consultation
- Visualisations.





Little Crow Solar Farm.

04



Little Crow Solar Farm.

We worked with INRG Ltd on a Development Consent Order (DCO) application for this nationally significant solar scheme. Little Crow is only the second project of its kind to reach the examination stage. On 5th April 2022 Little Crow Solar Park was granted development consent by the Secretary of State for Business, Energy & Industrial Strategy.

The findings and conclusion arising from the Examination, together with the Examiner's recommendation, were sent to the Secretary of State in January 2022 who then gave the Development Consent Order. The NSIP process was complex, and sat outside the usual planning and development process. We provided multiple areas of expertise for this application including design, economics, environment, heritage and planning.

The capacity of this scheme is in excess of 50MW and the associated development will be enough to power 45,000-60,000 homes per year in the Lincolnshire area.

> [CLICK HERE TO VIEW PROJECT](#)



Flintshire Enterprise Zone.

06

Flintshire Enterprise Zone.

We provided expertise to secure the successful planning permission from Flintshire County Council on behalf of Logik Strategic Land to deliver a biogas facility on the former Gaz De France power station.

The plant is expected to handle up to 182,000 tonnes of rubbish a year, producing up to two megawatts of green energy, while bringing huge investment to the region.

The process captures an extra 6,000 tons per year of valuable recyclables that by any other process would be missed. These are recyclables that are put into black bin bags by mistake and they are hard to obtain normally.

The technical process that will be used at the plant is known as ArrowBio, a unique technology that successfully treats municipal solid waste (MSW) using a hydromechanical separation and preparation process to recover recyclables.

It uses water and mechanical equipment to separate the organic fraction, produce high methane (CH₄) content biogas for several green energy uses and recycle up to 70%-80% of the waste. By-products such as various plastics, cardboard, wood and metals are suitable for recycling, and some of them also for RDF (Refuse-Derived Fuel) treatment. At the end of the anaerobic process, the organic remains are used as soil improver for agriculture as well as for bio-drying systems.

This proposal represents the first UK site utilising this waste concept, and we are pleased to be involved in such an innovative scheme.

[> CLICK HERE TO VIEW PROJECT](#)

A landscape photograph of the Kirkby Moor Wind Farm. The foreground is filled with tall, golden-brown grass. In the middle ground, several white wind turbines are scattered across rolling hills. The background shows a vast, hazy landscape under a clear blue sky with a few wispy clouds. A red vertical bar is positioned on the left side of the page, partially overlapping the title text.

Kirkby Moor Wind Farm.

08

Kirkby Moor Wind Farm.

We provided planning, heritage, landscape and environment expertise including expert witness services during the two-week public inquiry to secure planning permission for Kirkby Moor wind farm, to operate for a further eight years on a lifespan extension bid.

The decision by the Planning Inspectorate overturns the decision made by South Lakeland District Council's planning committee who rejected an application in 2017 to extend the operational life of the Kirkby Moor Wind Farm, in Grizebeck, which is in a Site of Special Scientific Interest (SSSI).

The Planning Inspector concluded that the continuation of renewable energy production from the wind farm would be acceptable, with an extension until March 31, 2027, plus a further year to carry out decommissioning works.

The case is notable in that it is understood to be the first life extension wind farm to be assessed against footnote 49 of the NPPF. Importantly, this has established that the life extension of a wind farm falls within the definition of 'repowering'.

> [CLICK HERE TO VIEW PROJECT](#)



Blandford Hill Eco Hub.

10

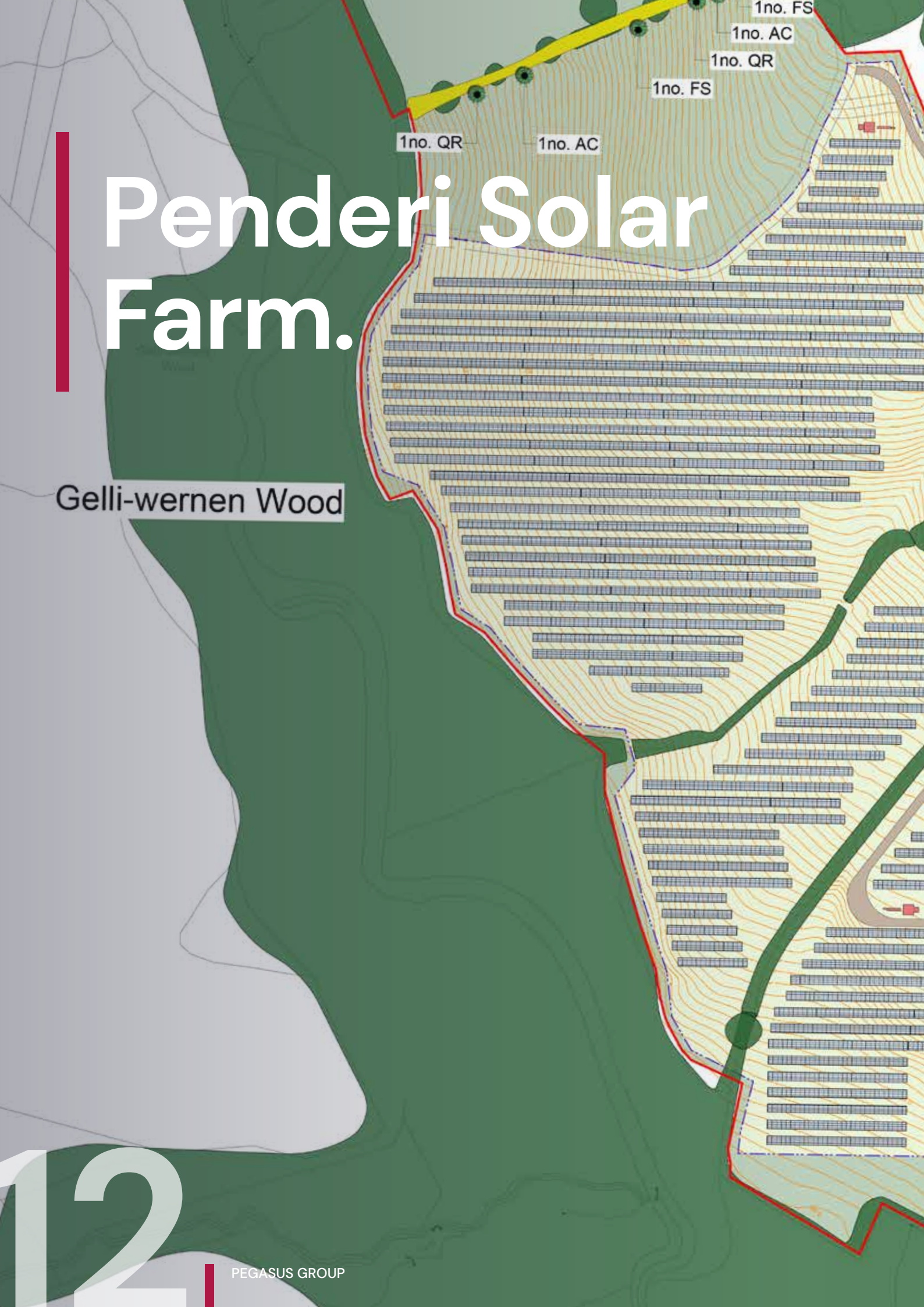
Blandford Hill Eco Hub.

Blandford Hill Eco Hub consists of an electric vehicle (EV) charging station, 15MW ground-mounted solar farm, and 3MW battery-storage facility. By combining green electricity generation, storage and charging, the site's green potential is maximised and will provide charging stations for up to 19 vehicles at any one time. The landscape has been carefully considered to provide ecological benefits and to screen the eco hub from views helping it to blend into its rural surroundings.

The electric vehicle charging station element of the scheme would comprise of construction of a new access off the existing lay-by to the south of the A354; Around 6 ultra-rapid (up to 350kW) and 6 rapid (43-100kW) charging points with additional fast chargers and Tesla "Superchargers" are proposed providing the ability to charge up to 19 EVs at any one time. Public rest facilities including public conveniences, a small café/shop and seating/rest area and all necessary associated development and facilities, including 30 car parking spaces (for EVs as well as non-EVs, to replace the lost lay-by), hardstanding, landscaping and outdoor seating.

All Councillors of Dorset Council's Strategic Planning Committee who were present throughout the committee meeting voted in support of the plans, following their officers' recommendation for approval.

[> CLICK HERE TO VIEW PROJECT](#)



The image is a detailed site plan for the Penderi Solar Farm. It features a topographic map with contour lines and a large area of solar panels arranged in rows. The solar panel area is divided into several zones, each labeled with '1no.' followed by a code: '1no. QR' (two locations), '1no. AC' (two locations), and '1no. FS' (two locations). A yellow line runs along the top edge of the solar panel area. A red line outlines the perimeter of the solar farm. A green area on the left is labeled 'Gelli-wernen Wood'. A large number '12' is visible in the bottom left corner. The Pegasus Group logo is in the bottom right corner.

Penderi Solar Farm.

Gelli-wernen Wood

12

Penderi Solar Farm.

Working on behalf of Voltalia UK Ltd, Pegasus Group have secured planning permission from the Welsh Government for a 38MW solar farm in Carmarthenshire, under the Development of National Significance (DNS) procedure.

We coordinated and managed the application submission and this included statutory pre-application consultation with the local community and specialist consultees.

Pegasus provided expert witness for the examination with regards to planning, socio-economics, transport and landscape matters. As part of the approval, a secondary listed building consent was also granted to lay underground cables through a listed bridge.

> [CLICK HERE TO VIEW PROJECT](#)



Site A

No matter the project, no matter the challenge,
you can rely on us to find solutions, to get things done,
to get things **Expertly Done.**

Our Offices

BIRMINGHAM (City)

T 0121 308 9570
Birmingham@pegasusgroup.co.uk

BIRMINGHAM (Sutton Coldfield)

T 0121 308 9570
Birmingham@pegasusgroup.co.uk

BRISTOL

T 01454 625 945
Bristol@pegasusgroup.co.uk

CAMBRIDGE

T 01223 202 100
Cambridge@pegasusgroup.co.uk

CIRENCESTER

T 01285 641 717
Cirencester@pegasusgroup.co.uk

EAST MIDLANDS

T 01509 670 806
EastMidlands@pegasusgroup.co.uk

EDINBURGH

T 0131 589 2774
Edinburgh@pegasusgroup.co.uk

LEEDS

T 0113 287 8200
Leeds@pegasusgroup.co.uk

LIVERPOOL

T 0151 317 5220
Liverpool@pegasusgroup.co.uk

LONDON

T 020 3897 1110
London@pegasusgroup.co.uk

MANCHESTER

T 0161 393 3399
Manchester@pegasusgroup.co.uk

NEWCASTLE

T 0191 917 6700
Newcastle@pegasusgroup.co.uk

PETERBOROUGH

T 01733 666600
enquiries@pegasusgroup.co.uk

SOLENT

T 023 8254 2777
Solent@pegasusgroup.co.uk

GROUP SERVICES

T 0333 0160777
enquiries@pegasusgroup.co.uk

ARMSTRONG BURTON GROUP

T 0121 323 2332
info@armstrongburton.co.uk

DOWNLOAD

Simply click on the
relevant brochure
icon to download
the required
brochure.



Expertly Done.

DESIGN | ECONOMICS | ENVIRONMENT | HERITAGE | LAND & PROPERTY | PLANNING | TRANSPORT & INFRASTRUCTURE

Pegasus Group is a trading name of Pegasus Planning Group Limited (07277000) registered in England and Wales
Registered Office: Pegasus House, Querns Business Centre, Whitworth Road, Cirencester, Gloucestershire, GL7 1RT



Pegasus_Group



@pegasusgroup



Pegasus_Group

PEGASUSGROUP.CO.UK