

AUTOMATIC DOSING SYSTEM

seko

Chemical Balancing System
for hot tubs & swim spas

Conforms to HSG282 Guidelines

Automatic chemical balancing

Remote Connectivity

Ensures customer satisfaction: balanced water

Real time and historic data for all modules

Graphic and text logs for trend analysis

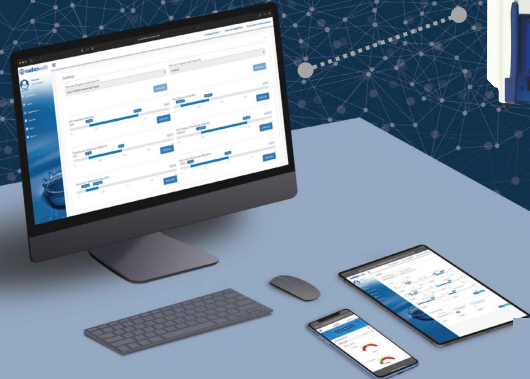
Alarm and status updates

Email & text alerts for chemical status

Unlimited modules on an account

Access from any web enabled device

Saves on labour and maintenance costs



Recommended supplier



SYKES
HOLIDAY COTTAGES



SHOREFIELD
HOLIDAYS



LR
HOTELS



LUXURY LODGES

working in partnership with

HOSEASONS
PART OF GWAZO



forest holidays

SIGN UP FOR A FREE
TRADE ACCOUNT
TO ACTIVATE DISCOUNTS



Wellis®
HOLIDAY LET SPAS

0203 746 3888
shop@wellisuk ltd
wellisuk ltd

AUTOMATIC DOSING SYSTEM

seko

Chemical Balancing System
for hot tubs & swim spas



RECOMMENDED BY Wellis®

AUTOMATIC CHEMICAL DOSING
SYSTEM FOR HSG282 COMPLIANT
HOT TUBS & SWIM SPAS

memberships



wellisuk.ltd



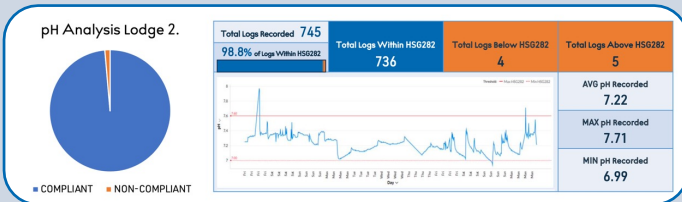
Chemical Balancing System
for hot tubs & swim spas

TESTING: MANUAL VS AUTOMATIC DOSING

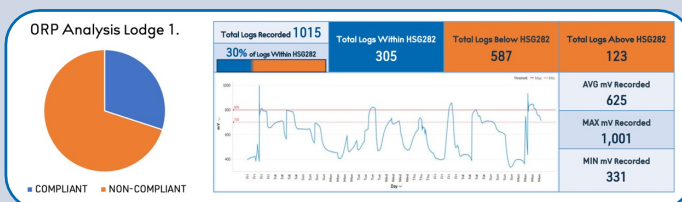
Lodge 1. With manual pH testing and dosing



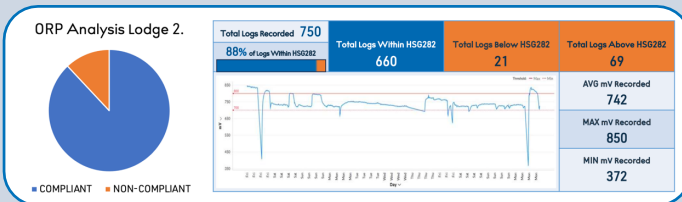
Lodge 2. With automatic pH testing and dosing



Lodge 1. With manual Chlorine (ORP) testing and dosing



Lodge 2. With automatic Chlorine (ORP) testing and dosing



*Please note: Lodge 2 pH and Chlorine were out of parameters on Friday and Monday as these were change over days and the tubs drained and re filled.



Chemical Balancing System
for hot tubs & swim spas

Offering the fullest range of measurements alongside user-friendly operation, the SEKO Auto-dosing System combines two peristaltic dosing pumps, multi-measurement capability and automatic proportional dosing to deliver the ideal solution for above-ground, indoor and outdoor hot tubs, swim spas or pools.



TRADE PRICE: from £ 2,750 + VAT

| | |
|-------------|--|
| pH - ORP | Parameters: pH (0-14), ORP (0-1,000 mV) |
| pH - ORP-CL | Parameters: pH (0-14) and ORP (0-1,000 mV) and Free Chlorine (0-5 ppm) |

| | |
|-----------|--------------------------------------|
| Flow rate | 1.5 l/h |
| Pressure | 1.5 bars |
| Pool size | Indoor 55/130 m3 Outdoor 5-110 m3 |

IP65 Enclosure

| | |
|------------|--------------------------------|
| Dimensions | 205 x 194 x 133 mm (L x H x D) |
| Material | ABS |

Main Board

| | |
|----------------------|-------------------------|
| Alphanumeric Display | 16 characters x 2 lines |
| Power Supply | 220 Vac, 50/60 Hz |



Chemical Balancing System
for hot tubs & swim spas

SAVINGS & ROI

To test a tub's water and balance the chemicals with the Palintest Kit pH and Chlorine averages 23 minutes twice a day. Total 46 min per day.

Labour Hourly rate at £12.50

6.5 days a week (1 day a week there was no need to test in the morning of draining)

| | |
|--------------------------|-----------------|
| 40 weeks a year Bookings | £2,491 per year |
| 45 weeks a year Bookings | £2,803 per year |
| 50 weeks a year Bookings | £3,114 per year |

*Please note: The above did not include data entry into their HSE Software carried out within the office and the savings in chemicals.

RETURN ON INVESTMENT: 12 MONTHS

BUY THIS PRODUCT FOR £14 PER WEEK

Why not take advantage of our [business finance options](#) to spread the cost of your new hot tub equipment?

| Term | 2 years | 3 years | 4 years | 5 years |
|-------------------------------------|---------------|--------------|--------------|--------------|
| First Payment of | £ 132.02 | £ 93.15 | £ 73.85 | £ 62.38 |
| Payments | 23 x £ 132.02 | 35 x £ 93.15 | 47 x £ 73.85 | 59 x £ 62.38 |
| Weekly Equivalent | £ 30.47 | £ 21.50 | £ 17.04 | £ 14.40 |
| Total Amount Payable | £ 3,168.48 | £ 3,353.40 | £ 3,544.80 | £ 3,742.80 |
| Corporation Tax Relief at 19% of* | £ 602.01 | £ 637.15 | £ 673.51 | £ 711.13 |
| Net cost of Financing the Equipment | £ 2,566.47 | £ 2,716.25 | £ 2,871.29 | £ 3,031.67 |

REMOTE CONNECTIVITY

