

Raw ambition, strength and power

A good deal for dealers

Farming never goes out of fashion. Neither does the need for high quality, innovative agricultural machinery. At Herde Industrier, we are now ready to take on the world – and to do so, we need a network of dedicated, professional dealers. Are you one of them?

Why Herde Industrier, you probably ask. Well – there are lots of reasons why you should choose us as your dealership partner and supplier.

We have a more than 100-year proud history as a producer of high-quality farming equipment. Accumulated knowledge of and respect for the farmer's everyday life and challenges is in the air we breathe.

Our product range is unique – agricultural machinery for manure and tillage, grass equipment and trailers (check out the web site to fully grasp the versatility), snow blowers, barn infrastructure, and more.

And yes, the name Herde is a guarantee for top quality. Our products are made to endure any

climate for years to come – thoroughly tested constructions made of high-quality steel.

Teaming up with us, you need no other provider, which means both simplicity through one contact point for ordering, service etc. – as well as long-lasting mutual trust.

Herde Industrier consists of the four trademarks Rekord System, Reime & Co, Globus, and Underhaug.

AGRICULTURE

The world's most important work Feeding the planet. That's what agriculture is all about. Our job is to provide farmers all over the world with equipment that help them perform their task in the best way possible.

Herde Industrier manufactures and exports an impressive range of first-class agricultural machinery – and now our mind is set on the global market. Our next step is to establish a network of prime quality dealers who share our pride in being the farmers' number one choice.



History back to 1907

Underhaug started its own production at Nærbø's old Dairy in 1907 after the founder F. A. Underhaug had been employed at Kverneland. The first products were sold plows and the popular "horse-hoe" Gjøa. The first year he had only one apprentice, still he produced 82 different plows. By 1916, the number had risen to 871 plows and 220 Gjøa horse-hoes. In 1911 he started producing the Stump pulling winch «Steinbukken». At the same time he also obtained a patent on the stone grapple. A total of 5,687 "Steinbukken" were made. A lot of prestige was gained and many medals were awarded to the company at that time.



1916-1930 - Korsmos

After "Steinbukken" came the weed harrow "Korsmos". In 1916 a total of 650 were sold. During the last year of WWI, the production was 900 plows in addition to horse hoes, harrows and the stump pulling winch «Steinbukken». The 1930s was the start of a new era: The Multi implements carrier "Troll". A Troll could be connected to ridgers, disc harrows, seed drills and fertilizer spreader.

1930 - Troll

The 1930s was the start of a new era: The Multi implements carrier "Troll". On Troll it was possible to connect ridgers, disc harrows, seed drills and fertilizer spreader. After WWI the mechanization also changed Norwegian farming. An increasing number of tractors opened a new market for implements. The first new product was "Traktor Troll". A lot of old Troll equipment was available with extra adapters for a tractor. The first potato planter was adapted for use with a Troll. In 1953 the first potato harvester was produced. Both machines were well known by all farmers; in fact, some are still in use! The "old factory" had limited area. In 1955 we moved into the current factory.



1955 - Potato harvesters

In 1955, Underhaug obtained a patent on a potato harvester and the first zero series; 20 machines were produced in 1963. This was a great success. The next year 300 potato harvesters were produced. At the same time an automatic potato planter was developed. In the first year 150 potato planters were produced. Over the course of the next few years both of these potato machines were undergoing improvements and new models. In the meantime there were new products such as the Concentrate Trolley "Kraftförvogn", the Hay Barrow "Hjulgrabb" (both 1967) and the Silage Feeder/Straw Blower "Fôrutlegger" (1972). The first test model of Underhaug Forage Unloading Wagon came in 1974. In total 8,000 wagons were produced by the end of 1985.

FOR TRAKTOR:
FOR HEST:

TENK PÅ «TROLL»

Vi skjenker billedmessig dette tryllete troll for å lade Deres tanker inn på våre ypperlige maskiner TROLL. Har D. f. etc. TROLL på garden. Ja da har De faktisk en maskin som sparer seg inn på mere kortere tid enn De tror.

TROLL kan med enkle grep tilkoples de mest nyttige tilleggsredskaper, så som Potetsettemaskin - Potetmarker - Gulrotmaskin - Rottrøttmaskin - Kjønningsmaskin - Pulverspreder - Skjær for oppsteking av poteter - Pianteskjær - Røtteskjær -

HAR DE TROLL PÅ GARDEN
SÅ BLIR DE GODT HJELPT

F. A. UNDERHAUGS FABRIK
NÆRBØ
SPØR DERES MASKINLEVERANDØR

OGLAND

• DE LEGGER SIKKERT MERKE MED EN UNDERHAUG'S •

Think of «TROLL»

"We pictorially reproduce this joyful TROLL to guide your thoughts on our excellent machines TROLL. Do you have a TROLL on your farm? Yes? Then you have a machine that will pay off quickly. On the Multi implement carrier "Troll" you can connect a huge number of implements, such as Potato Planter - Potato Marker - Carrot Seeder - Root Crops Seeder - Fertilizer Spreader - Powder Spreader - Shear for picking potatoes - Planting Shear - Ridging Hiller / Weed Harrow. If you have a Troll on your farm, you have a good partner. F. A. Underhaugs Fabrik

A man wearing a hat and a t-shirt is working with a large pile of hay in a barn. The background is a corrugated metal wall. The overall tone is dark and blue.

Underhaug

100 years of Quality

Underhaug has been producing implements and equipment for Norwegian farmers for over 100 years, with focus on technology oriented toward practicality, durability and a long lifetime.

Underhaug is built on a strong work ethic and the experience of several generations. Our customers are at the heart of our strategy, the focus of our vision, and one of our core values.

Together for the future!

I'm pleased that Herde Industrier is resuming production at the historic Underhaug factory. And the renewal of the famous unloading forage wagon. A must in tower silos!

- Erik Auestad, Farmer at Hå municipality, Rogaland County.





Underhaug

8000





Kombigrip

Combi Grapple for handling and stacking all types of round bales

UM-7762 Combi Grapple is specially developed for stacking bales without damaging the stretch film. The Combi Grapple handles round bales from any angle and can also be used on square bales.

There are no rollers or arms that get pinched either below or on the sides of stacked bales: The grapple lifts the round bale from above. UM-7762 Combi Grapple is perfect for stacking as well as for picking bales from the stack. The grapple requires a double-acting hydraulic outlet and is supplied with 1.5 meter hydraulic hoses and ISO couplings.

Weight	160 kg
Length	1500-2100 mm
Height	1240 mm
Max. Width (mm)	1240 mm
Order number	UM 7762



Bale grapple with roller arms

for gentle handling of wrapped round bales

With Silagrip I (UM-7705) bales can be transported and stacked without damaging the stretch film. The roller tine system consists of 1 pair rollers, bearings and Kverneland standard bale spears. The roller arms handle the bales very gently.

It's easy to convert UM - 7705 Silagrip Grapple into an ordinary bale fork, just pull the rollers off from the spears. This is done in a few minutes. An upper bale spear can be supplied as an option. The upper bale spear is needed to rotate bales. It also provides a secure transportation.

Silagrip I requires one double-acting hydraulic outlet. Supplied with 1.5 m hydraulic hoses and ISO couplings. Regarding couplers (for weld-on, directly or on plates) for front loader, contact the front loader dealer. 3-Point point mounting Category II.

Weight	175 kg
Length	1500 mm
Height	700 mm
Claw length	1100 mm
Grapple width	1800 mm
Max. bale diameter	1400 mm

Order number
 UM 7706 Trima/Ålø/HMV-coupler
 UM 7707 Triangle Quick coupler
 UM 7708 Euro Quick Coupler
 UM 7709 Combi coupler HMV/Trima/SMS/Lyng triangle/3-point
 7710 Overhead arm
 7711 Top link bracket for Overhead arm
 7712 round bale spear (2 pcs.)
 7714 3-point for lower link and top link
 7715 Three-point kit (7705 + 7710)



Round bale grapples with roller arms with large diameter handle the bales very gently without damaging the stretch film.

With Underhaug Silagrip UM-7740 bales can be transported and handled without damaging the stretch film. The open frame construction provides an unrestricted view for easy bale handling. The wpped bales.

The rollers tine system consists of 1 pair of rollers, bearings and Kverneland standard bale spears. It's easy to convert the bale grapple into an ordinary bale fork, just pull the rollers off the spears. The rollers have quick locks. It takes less than a minute to dismantle the rollers.

UM-7740 Silagrip requires a double-acting hydraulic outlet and is supplied with 1.5 meter hydraulic hoses and ISO couplings.

Weight	160 kg
Length	1500 mm
Height	800 mm
Claw length	1200 mm
Grapple width	440-1810 mm
Max. bale diameter	1500 mm
Order number	
UM 7741 = UM-7740 with 3-point linkage	
UM 7742 = UM-7740 with Trima/Ålø/HMV-coupler	
UM 7743 = UM-7740 with Triangle Quick coupler	
UM 7744 = UM-7740 with Euro Quick Coupler	
UM 7745 = UM-7740 with Combi coupler HMV/Trima/SMS/Lyng triangle /3-point	



Hydraulic bale grapple with roller tines

for gentle transport and handling of wrapped 2 round bales.
Delivered with 2 double-acting cylinders and 4 hydraulic



Weight	350 kg
Length	1330 mm
Height	700 mm
Claw length	1180 mm
Grapple width	2330 mm
Max. bale diameter	1200 mm
Maximum Bale Weight	900 kg x 2

Order number
 UM 7812 Trima/Åla/HMV-coupler
 UM 7813 Triangle Quick coupler
 UM 7814 Euro Quick Coupler
 UM 7815 Combi coupler HMV / Trima / SMS /
 Lyng triangle Quick coupler / 3-point
 7710 Overhead arm for 7805 and 7806



Hydraulic bale grapple with roller tines

for gentle transport and handling of wrapped 1 - 3 round bales

To achieve high quality round bales, a good result depends on more than the baling and wrapping. It is also important to avoid damaging the stretch film when handling and transporting the bales.

Sizes available

Underhaug has a wide range of round bale grapples / lifters. Choose between 1, 1+1, 1+2, 1+3, 2+2, 2+3, 3+3, depending on the tractor size. With just one tractor you can transport up to 6 round bales. You'll get a high, gentle transport efficiency.

Silagrip 7 requires one double-acting hydraulic outlet. Supplied with 1.5 m hydraulic hoses and ISO couplings. Available with most types of tool carriers for front loaders.

Operation

Step one: Pick up bale number 1 with the front or rear mounted bale grapple. Step two: Pick up bale number 2, drive next to number 3 and unload the rear bale. Step three: Back and lift all 3 bales with the rear mounted UM-7810 Triple Round Bale Grapple. Step four: Pick up 1, 2, or 3 bales with the front mounted bale grapple, depending on the type of bale grapple (single, double or triple). A support bar on top of the frame prevents the ball from sliding into the tractor.

With UM-7810 Silagrip 7 Triple Round Bale Grapple bales can be transported and stacked without damaging the stretch film. The roller tine system consists of 2 pair of rollers, bearings and Kverneland standard bale spears. The roller arms handle the bales very gently. It's easy to convert the bale grapple into an ordinary bale fork, just pull the rollers off the the spears. This is done in a few minutes.

Order number
7716 Combi coupler HMV/Trima/Triangle/3.-point
7750 welded Trima/Åle/HMV coupler, painted
7751 welded Triangle, painted
7752 welded Eurocoupling, painted

Weight	260 kg
Length	1330 mm
Height w / support	1320 mm
Claw length	1180 mm
Grapple width	2330 mm
Max. bale diameter	1200 mm
Max. bale Weight	900 x 3 kg



Easy handling of round bales

A standard bale gripper (Silagrip 1 or Silagrip 2) mounted at the front loader and a Silagrip 4 round bale lifter at the rear affords double capacity.

A cost-effective implement for lifting and transporting round bales. UM-7780 has two semi-vertical arms with an outer and inner limiter. When the bale lifter is lowered to the ground to pick up the bales, the semi-vertical arms with lifting tubes spread automatically to the outer limiter.

When lifting the implement, the semi-vertical arms with lifting tubes swing together and hold the bale.

UM-7780 Bale lifter is made for mounting onto the tractor's three-point linkage. It also possible to weld on a A-frame. Can also be adapted to front loaders.

Weight	175 kg
Length	1500 mm
Height	700 mm
Claw length	1100 mm
Grapple width	1800 mm
Max. bale diameter	1400 mm

Order number
 UM 7706 Trima/Ålø/HMV-coupler
 UM 7707 Triangle Quick coupler
 UM 7708 Euro Quick Coupler
 UM 7709 Combi coupler HMV/Trima/SMS/Lyng triangle/3-point
 7710 Overhead arm
 7711 Top link bracket for overhead arm
 7712 round bale spear (2 pcs.)
 7714 3-point for lower link and top link
 7715 Three-point kit (7705 + 7710)



Rational and gentle transportation of 2 round bales

UM-7790 Double Round Bale Lifter is quick and easy to operate. For mounting in the tractor's three-point linkage. It's also possible to have a double round bale lifter at the rear and a UM-7780 at the front for transporting 3 bales at the same time. With wrapped round bales and relatively short transport distances, the double round bale lifter is the perfect solution.

The working principle is similar to the single bale lifter UM-7780. UM-7780 has two lifting tubes welded on separate wsemi-vertical arms with an outer and inner limiter. When the bale lifter is lowered to the ground the semi-vertical arms with lifting tubes spread automatically to the outer limiter. Then pick up the bale. When lifting, the semi-vertical arms with lifting tubes swing together and hold the bale.

The double round bale lifter is actually a UM-7780 with a wider frame and has two pairs of semi-vertical arms with lifting tubes instead of one pair. In other words, a twin of the single Bale lifter. How to use: Pick up one bale and unload it **close to** (10 to 20 cm) another bale. Pick up both bales. To avoid damaging the stretch film you must be careful when handling the bales. This way you avoid damaging the film.

To pick up the first bale it does not matter if it is picked up on the right or left side of the bale lifter, simply drive to the second ball so that it can be laid 10-20 cm from it.

Weight	150 kg
Max. bale diameter	1200 mm
Max round bale weight	900 kg x 2

Order number
 7831 Trima/Ålo/HMV-coupler
 7832 Triangle Quick coupler
 7833 Euro Quick Coupler
 7834 Combi coupler HMV/Trima/SMS/Lyng
 triangle/3-point



Effective and gentle transportation of round bales from 120 and up to 150 cm

UM-7790 XL Double Round Bale Lifter is easy to operate. It is made for or mounting in tractor's three-point linkage with ball ends or Walterscheid Quick Coupler. It's also possible to have a double round bale lifter at the rear and a UM-7780 at the front for transporting 3 bales at the same time. With wrapped round bales and relatively short transport distances, the double round bale lifter is the perfect solution.

Unladen weight	185 kg
Max. bale diameter	1500 mm
Maximum Bale	900 kg x 2

Order number

UM 7795 Trima/Ålø/HMV-coupler
 UM 7796 Triangle Quick coupler
 UM 7797 Euro Quick Coupler
 UM 7798 Combi coupler HMV / Trima / SMS /
 Lyng triangle Quick coupler / 3-point

The working principle is similar to the single bale lifter UM-7780. UM-7780 has two lifting tubes welded on separate semi-vertical arms with an outer and inner limiter. When the bale lifter is lowered to the ground the semi-vertical arms with lifting tubes spread automatically to the outer limiter. Then pick up the bale. Effective and gentle transportation of round bales from 120 and up to 150 cm. When lifting, the semi-vertical arms with lifting tubes swing together and hold the bale.

The double round bale lifter is actually a UM-7780 with a wider frame and has two pairs of semi-vertical arms with lifting tubes instead of one pair. In other words, a twin of the simple Bale lifter. How to use: Pick up one bale and unload it **close to** (10 to 20 cm) another bale. Pick up both bales. To avoid damaging the stretch film you have to be careful when handling the bales. This way you avoid damaging the film.

To pick up the first bale it does not matter if it is picked up on the right or left side of the bale lifter, simply drive to the second ball so that it can be laid 10-20 cm from it.



Gentle transportation of 3 round bales

Today's tractors are getting more and more powerful. We have therefore launched "Triple" round bale lifter and round bale grapple. Combined with our already existing single and double round bale grippers and lifters, our concept "Silagrip" provides full coverage for transporting 1-6 bales simultaneously.

The combination of Silagrip 1, Silagrip 2 or Tripple Silagrip 7 at the front loader and a Triple Silagrip 6 at the three-point linkage gives up to five times capacity when bales are to be transported.

UM-7800 Silagrip 6 Triple Round Bale Lifter

A cost-effective mechanical implement for lifting and gentle transporting 1- 3 round bales. The lifter has two sets of lifting tubes welded on separate semi-vertical arms with an outer and inner limiter. When the bale lifter is lowered to the ground to pick up the bales, the semi-vertical arms with lifting tubes spread automatically to the outer limiter. When lifting the implement the semi-vertical arms with lifting tubes swing together and hold the bales. When lifting the implement the semi-vertical arms with lifting tubes swing together and hold the bales.

Weight	200 kg
Length	1330 mm
Height w / support	1400 mm
Claw length	1180 mm
Grapple width	2200 mm
Max. bale diameter	1400 mm
Max. bale Weight	900 x 3 kg
Order number	
UM 7801 Trima/Åla/HMV-coupler	
UM 7802 Triangle Quick coupler	
UM 7803 Euro Quick Coupler	
UM 7804 Combi coupler HMV / Trima / SMS /	
Lyng triangle Quick coupler / 3-point	



Balestrip

Easy removal of plastic and net - can also be used as a regular round bale gripper

The Silastrip has as standard 3 tines. One upper and two lower. In addition, it is equipped with a hydraulic claw. The claw is normally open in the upper position. The claw is hydraulically operated.

Operation

Set the lower tines in their innermost position. Insert the upper tine as high as possible in the bale. Use the stationary knife to split the plastic at the bottom of the bale. Position the bale over the feeding location. Lower the claw towards the upper tine and squeeze plastic and net. By spreading the lower tines, the bale will open; the silage will fall out, and the plastic will remain squeezed between the upper tine and the claw. The Silastrip can also be used as a standard hydraulic round bale gripper with roller arms.

Conversion to round bale gripper is done in a few minutes by inserting rollers (tubes) on the 2 lower tines and securing with a screw. The horizontal knife between the tines must be tilted up and locked. Take off the upper tine and tilt up the claw to a vertical position and activate the lock. The Silastrip can now be used for lifting and transporting round bales.

Weight	210 kg
Length	1500 mm
Height	700 mm
Claw length	1200 mm
Max. bale diameter	1400 mm

Order number
 UM 7852 Stationary Counter) knife
 UM 7853 Knife for mounting on forage mixer wagon



Underhaug double bale fork

The Bale Fork is designed to transport 2 round bales up to 1800 mm diameter

The outer dimensions of the frame are 2540 mm; in compliance with the traffic regulations in force which requires a max. speed of 30 km / h and Total width max 2550m (country specific). The frame is equipped with a standard 3-point connection and 6 pcs. Kverneland tines mounted in welded sleeves. The tines can be removed individually. The tines are positioned to fit 2 x 1200 mm round bales for safe and secure transportation. The fork is so solid that even with heavy bales 2 tines in each bale ensures safe transportation. The bales are supported by the upper tines (if installed) If you take off the upper tines the bale fork can also work well as a double pallet fork.

Unladen weight	160 kg
Maximum Bale	1100 kg x 2
Total width	2540 mm

Order number

11400 Double bale fork standard with 3-point coupler

11401 (double bale fork with Trima/Ålø/HMV-coupler

11402 Double bale fork with triangle Quick coupler

11403 Double bale fork with Euro Quick Coupler

11404 Double bale fork with Combi-coupler HMV / Trima / Ålø / Lyng triangle



Practical pallet fork

For lifting and transporting pallets, boxes and other general cargo

The pallet fork is designed to lift pallets, boxes and suitable general cargo up to 1500 kg. Mounted on the tractor's three-point linkage or on a front loader. Comes as standard for mounting on three-point linkage. Can be fitted with quick coupling frame for "Triangle" or HMV / Trima. As an option 2 pcs. round bale tines for transporting round bales. Optional hydraulic high-lift frame.

The combination of fork pallet and high-lift frame is a cost-effective solution for stacking e.g. potato boxes or loading trailers. The high-lift frame is also well suited in low barns due to the low total height. The fork pallet can be attached with lower links and top link or to a quick attach frame "Triangle" or HMV / Trima. Also, to front loader manufactured according to Norwegian Standards. Each tine (fork) is connected to the main frame with a sliding bracket with 25 cm adjustment. There are sliding brackets between the plates. This makes it easy to adjust the distance between the tines. The spacers can be dismantled to lock the fork tines.

Hydraulic high-lift-frame

Attach a cylinder bracket and high-lift frame bracket to the back as shown in the picture. The back can then be slid onto the

lifting frame. Then attach the cylinder to the back. The high-lift frame is delivered as standard for 3-point and Triangle / Akkord quick coupler (can also be delivered with HMV / Trima-Bergsjø). The A-frame quick coupler has no disadvantage for the weight distribution. With the high-lift frame a hydraulic top link is needed. The high-lift has a lifting height of 75 cm. Together with the tractor's 3-point linkage the total lifting height is approx. 140 cm

The round bale spears are attached to the crossbeam (see picture). Remove the two lower bolts and slide the spear with the mounting plates on the crossbeam. Insert the bolts and tighten all nuts. Two spears eliminate rotation on the round bale and ensure high load capacity.

Quick-attach frame

Delivered in two versions, for Triangel (Akkord) or HMV / Trima Bergsjø quick couplers. The quick coupler frame is easily attached with 4 bolts to the inner fasteners in the main frame. With quick coupler frame the forks are 18 cm further behind (be aware of changes in weight distribution).

ORDER NUMBER:

11100 Pallet fork

11102 Pallet fork, double

11110 round bale spear

11130 Quick connect frame, Ål / Trima / HMV

11140 Quick connect frame, triangle

11300 Round ball fork w / spear



50 YEARS OF QUALITY

Hay barrow for transport and distribution of hay and silage

It is primarily intended for the transportation and distribution of silage grass, wet grass, lye straw and other green fodder inside the barn. Simplifies manual handling. Work studies show that you can do far more with this tool than with a hay fork.

Other transport equipment

The Hay barrow is also a handy little cart that can be used for other various light transports on the farm. A sack of turnips, a couple of small square straw or hay bales to be moved a short distance etc. It's a handy tool!

Light and robust.

It is designed as a hay fork for tractors, with 5 steel tines that carry the load and an overhead double claw. The load is released by pressing a pedal. It rolls easily on large rubber wheels and handles loads of 75-100 kg.

Weight	32 kg
Width	60 cm
Wheel	16 " (4.00x8 ") pneumatic rubber
Capacity	Approximate 75 kg wet grass

Order number UM 8028



Concentrate Trolley

with wheels - for fast and precise feeding.

Application

The metering system is simple- precise and safe. The discharge rate is adjusted with a screw at the bottom of the trolley.

The discharge rate is indicated on a scale. The well-laid out and easy-to-read scale shows concentrate amount from 0-10 kg. The scale can be set steplessly (calibrated) in relation to the speed of the discharge screw. The scale therefore displays the discharge rate accurately (kg) regardless of the type of concentrate used.

Flexible:

The discharge spout can be adjusted to suit different heights of trough. The track is adjustable.

Brake disc 241295

The brake disc is designed to reduce spills of pellets at the discharge spout. It transmits the pressure away from the discharge spout. Also recommended on old trolleys. Rubber tire set 8012. Rubber tires can be fitted to an old trolley without any modifications. These wheels have larger diameters.

Tot. length (incl. handle)	128 cm
Max. Width (mm)	78 cm
Wheelbase (ext.)	62 cm
Overall height	93 - 143 cm
Height of discharge spout	15 - 65 cm
Volume	200l
Unladen weight	70 kg



Pressure spring.
Hydraulic adjustment on
depth wheels.
6 cm row distance -
adjustable depth
Easy filling - low height
Easy adjustment /
replacement of coulters
blades.
Farm Flex rolls.

An efficient seed drill for renewing existing grassland without prior tillage.

Availability in working widths from 1.5 to 3 meter.

UM - 7942 Direct seed drill 2.5 m, 6 cm row spacing

UM - 7934 Direct seed drill 2 m, 6 cm row spacing

UM - 7926 Direct seed drill 1.5 m, 6 cm row spacing

UM - 7950 Direct seed drill 3 m, 6 cm row spacing

Working width	1,5, 2,0, 2,5, 3,0 m
Application	0-50 kg/ha
Seed box	(160, 215, 270 or 320 litres)
Row spacing	6 cm
# rows	26, 34, 42 or 50
# seed coulters	13, 17, 21 or 25
Pressure per coulter	10-100 kg
Unladen weight	400 kg (1,5 m)-800 kg (3,0 m)

What types of seeds can be sown?

The machine can sow all kinds of grass seeds and most herb seeds. It is the seed size that limits its use. Ordinary grain seed is too large for the feed rollers.

You reap what you sow

Or so the saying goes. Another saying goes like this: "You can't plant seed with closed fists". Well, in farming life, using your hands to sow is not an option at all.

Efficient seed drills are waiting to do the job. At Herde, we have seven different models - five direct seed drills and two drills for grass seed, alleasy to maneuver. Whatever the farmer visiting your shop asks for, you will be able to help.

All models are easy to maneuver, and most of all: They do their job without complaining. Constructed and fabricated by dedicated, skilled people the reliability and performance are the best to be found. Satisfaction guaranteed!

The seed drill is excellent for maintenance and renewing meadows and grassland. Also well suited when larger patches of meadow are destroyed by ice or floods. Just as relevant for agriculture as for sports fields, golf courses and public green areas.

Practical use in agriculture

On surface-cultivated grassland it's difficult to perform tillage. A direct seed drill is the answer. Stones just below the turf? No problem! The spring-loaded seed coulters oscillate freely and slide easily over such obstacles. The seed drill

is also well suited for sowing special seed varieties in existing crops, such as clover in clover-poor meadows. And it's also well suited for sowing herbs and other vegetable varieties (organic farming.)

Golf courses, sports fields, and other green areas

The direct seed drill has proven to be an excellent seed drill for renewing sports fields, golf courses and parks. The unique seeding units consist of "skids" with two slots with sharp adjustable coulters. This avoids ripping up loose soil, stones, and plant residues. Fairways on several golf courses have been reseeded with great success, golf was played with no disruption. For maintenance and rejuvenating of sports fields and golf courses it may be necessary to cross-sow. For maintenance and rejuvenating of sports fields and golf courses we can deliver a special skid for the seeding units. This is based on our long experience sowing on golf courses

Unique seed coulters

Our unique seed coulters consist of "skids" with two slots with sharp adjustable coulters with adjustable ground pressure. The coulter pressure is adjustable from 10 kg and upwards by means of a spring on each coulter arm and hydraulic depth wheels (standard equipment on all machines). Each skid has two longitudinal slots. A hardened steel knife in front of each slot can be adjusted up or down to achieve desired sowing depth. The seed is dropped straight into the rows created by the sharp coulters. This system has proven

to be better than both ordinary coulters and disc coulters. The seeding units consist of "skids" with two slots with sharp adjustable coulters. This avoids ripping up loose soil, stones, and plant residues. The seed drill is available in 4 working widths from 1.5 m to 3.0 m. UM7900 has 21 seeding units with a total of 42 coulters, 42 rows and a row spacing at 6 cm. Working width 2.5 m. UM7950 has 25 seeding units with a total of 50 coulters, 50 rows and a working width of 2.5 m. Otherwise the 4 machines are exactly the same.

Seed coulters

The seed drill has a seed hopper with feed rollers. Each seed hopper has 26, 34, 42 or 50 outlets (1.5, 2.0, 2.5 or 3.0 m machine), respectively.

The seed rate is set centrally and steplessly from 0 to 50 kg / ha (5 kg / decare). (As the thousand grain mass varies quite a lot, it is recommended to calibrate the seed rate setting before starting seeding operation)

Speed - capacity

For metering system with displaceable feed roller, the amount of seed discharged depends on both how long the feed roller is pushed into the housing and on how fast the roller rotates. If the feed roller rotates too fast, the roller starts to "cheat" because it rotates so fast that the seed does not fill the grooves in the rollers completely. The seed rollers are driven via a chain by a land wheel. It is not recommended to drive faster than 6-7 km / h, which corresponds to 15 -17.5 da / h for a 2.5 m machine and 18 -21 decare / h for 3.0 m machine.

Order number

7955 Triangle Quick coupler, complete
7966 Lighting equipment complete 2.5 and 3 m
7968 Extra ballast weights 2.5 m (130 kg)
7969 Extra ballast weights 3.0 m (150 kg)
7972 Area counter (digital) for 2.5 and 3 m
7974 Knife set, 3 mm steel (std) for 2.5 m machine
7975 Knife set, 2 mm steel w / 1 mm shims for 2.5 m machine
7976 Knife set, 3 mm steel (std) for 3 m machine
7977 Knife set, 2 mm steel w / 1 m shims for 3 m machine

7978 Knife set, 3 mm steel 2 m (34 knives)
7979 Knife set, 2 mm steel w / shims for 2 m (34 knives)
7980 Knife kit, 3 mm steel 1.5 m (26 knives)
7981 Knife kit, 2 mm steel w / shims 1.5 m (26 knives)
7986 Farm Flex rolls 3.0 m
7987 Farm Flex rolls 2.5 m
7988 Farm Flex rolls 2.0 m
7989 Farm Flex rolls 1.5 m



A low-cost seed drill with 12 cm row spacing for rejuvenating existing grassland without prior tillage

Working width	2,5 or 3,0 m
Application	0-25 kg/ha
Seed box	(135 or 160 litres)
Row spacing	12 cm
# Rows	21 or 25
# Seed coulters	11 or 13
Pressure per coulter	10-100 kg
Unladen weight	400 kg (1,5 m) / 800 kg (3,0 m)

Order number

7966 Lighting, complete
 7968 Extra ballast weights 150 kg
 7972 Area counter (digital)
 7982 Knife set, 3 mm steel (std) for 2.5 m machine
 7983 Knife kit, 2 mm steel for 2.5 m machine
 7984 Knife set, 3 mm steel (std) for 3 m machine
 7985 Knife kit, 2 mm steel for 3 m machine
 7986 Farm Flex rolls 3.0 m
 7987 Farm Flex rolls 2.5 m

Practical use in agriculture

On surface-cultivated grassland it's difficult to perform tillage. A direct seed drill is the answer. Stones just below the turf? No problem! The spring-loaded seed coulters oscillate freely and slide easily over such obstacles. The seed drill is also well suited for sowing special seed varieties in existing crops, such as clover in clover-poor meadows. And it's well suited for sowing herbs and other vegetable varieties (organic farming).

A seed drill with a unique seeding unit.

Our unique seeding units consist of "skids" with two slots with sharp adjustable coulters with adjustable ground pressure. The coulter pressure is adjustable from 10 kg and upwards by means of a spring on each coulter arm and hydraulic depth wheels (standard equipment on all machines). Each skid has two longitudinal slots. A hardened steel knife in front of each slot can be adjusted up or down to achieve desired sowing depth. The seed is dropped straight into the rows created by the sharp coulters. This system has proven to be better than both ordinary coulters and disc coulters. The seeding units consist of "skids" with two slots with sharp adjustable coulters. This avoids ripping up loose soil, stones, and plant residues. The seed drill is available in 2 working widths, 2.5 m & 3.0 m. UM7921 has 11 seeding units with a total of 21 coulters, 21 rows and a row spacing at 12 cm. Working width 2.5

m. UM7925 has 13 seeding units with a total of 25 coulters, 25 rows and a working width of 2.5 m. Otherwise the 2 machines are exactly the same.

Seed coulters

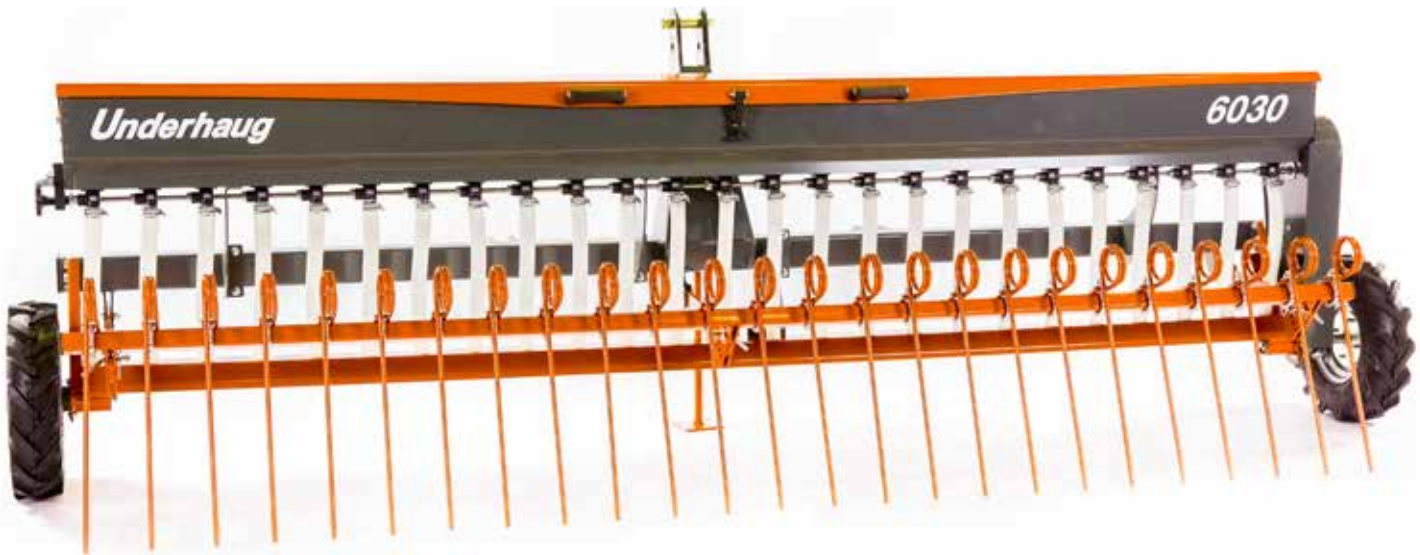
The machine is equipped with a seed hopper with 21 or 25 adjustable feed rollers (2.5 or 3 meters machine), respectively. The seed rate is set centrally and steplessly from 0 to 25 kg / ha (2.5 kg / decare). As the thousand grain mass varies quite a lot, it is recommended to calibrate the seed rate setting before starting work.

Speed - capacity

For metering system with displaceable feed roller, the amount of seed discharged depends on both how long the feed roller is pushed into the housing and on how fast the roller rotates. If the feed roller rotates too fast, the roller starts to "cheat" because it rotates so fast that the seed does not fill the grooves in the rollers completely. The seed rollers are driven via a chain by a land wheel. It is not recommended to drive faster than 6-7 km / h, which corresponds to 15 - 17.5 da / h for a 2.5 m machine and 18 - 21 decare / h for 3.0 m machine.

What types of seeds can be sown?

The machine can sow all kinds of grass seeds and most herb seeds. It is the seed size that limits its use. Ordinary grain seed is too large for the feed rollers.



Simple and functional grass seed drill

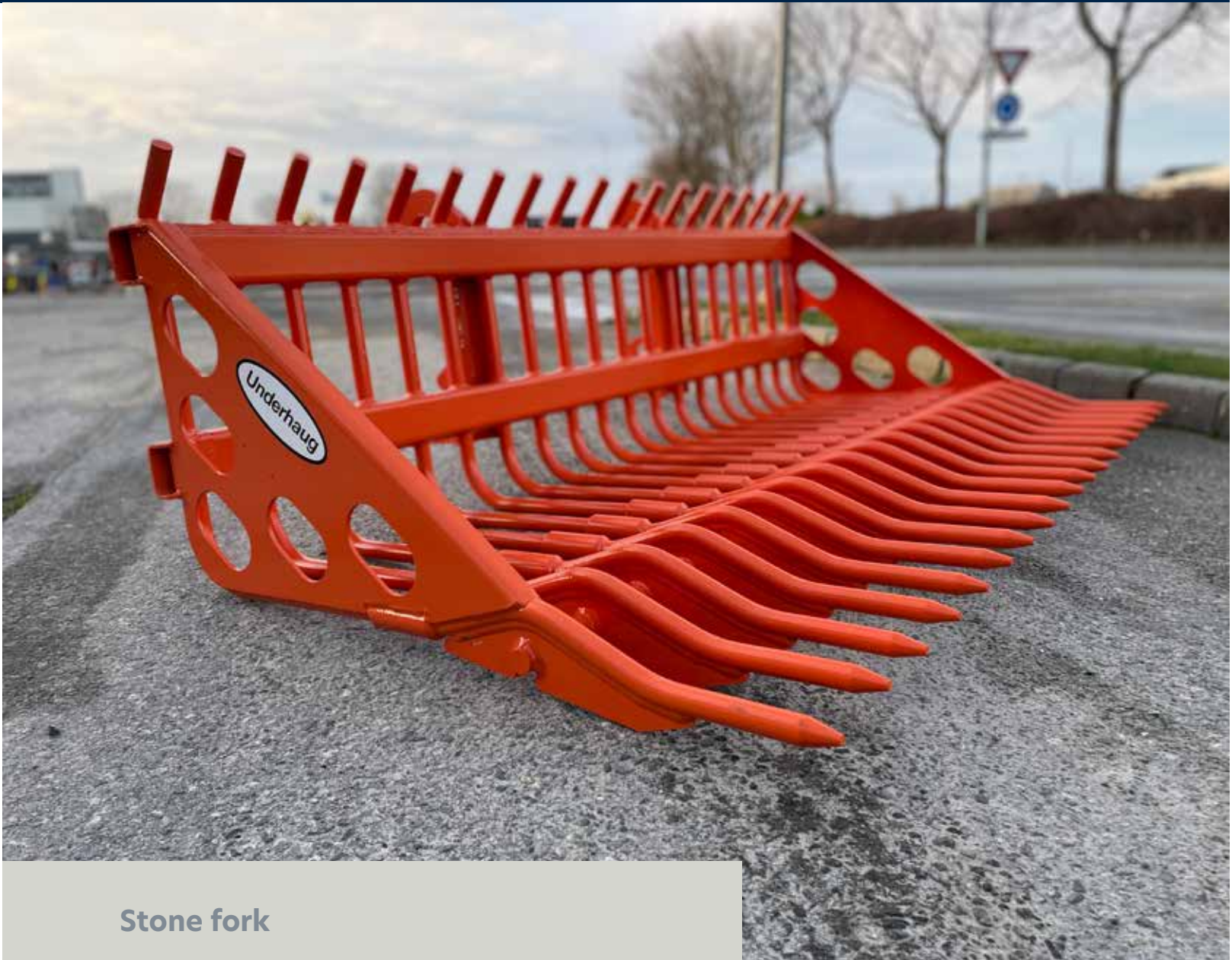
Underhaug grass seed drill is suitable for seeding or reseeding meadows, pastures, lawns etc.

The machines are delivered as standard with three point linkage connection and adjustable rear harrow. The hopper has an effective agitator shaft for precise seeding even on hilly fields. The seed drill has tractor pattern tires. The drive is transferred via chains to the feed rollers. Feeding amount is set with a wheel with different positions and the choice of two speeds. The rear harrow is easily adjusted with pins.

Grass seed drill	UM-6025	UM-6030
Weight	165 kg	185 kg
Working width	2.5 metres	3 metres
Total width	2750 mm	3230 mm
Height	1050 mm	1050 mm
Seed box capacity	99 L	120 L
Tyre size	4.00 x 8	4.00 x 8
# Seed rollers	21	25

Order number
7966 Lighting, complete
7968 Extra ballast weights 150 kg
7972 Area counter (digital)
7982 Knife set, 3 mm steel (std) for 2.5 m machine
7983 Knife kit, 2 mm steel for 2.5 m machine
7984 Knife set, 3 mm steel (std) for 3 m machine
7985 Knife kit, 2 mm steel for 3 m machine
7986 Farm Flex rolls 3.0 m
7987 Farm Flex rolls 2.5 m





Stone fork

The stone fork is an effective and inexpensive implement for removing surface stones.

Front mounted stone fork and rear mounted implements such as a plow, cultivator or a roller is an effective time-saving combination. Powerful and robust construction adapted to today's high standards of safety and quality. The bump in the front edge of the stone fork prevents, for example, rock to tear off when shutting off soil or during transport. Tines as well as cross beams are made of Globus Hardened steel. Globus Stone forks are available in three working widths with a tine spacing at 80 mm. There is choice between Triangle, 3.-point hitching, Trima / SMS or Euro couplers.

STONE FORK	GSGR17580	GSGR20080	GSGR23080
Width, cm	175	200	230
Number of tines	17	19	22
Tine spacing	8	8	8
Weight, kg	245	275	300



Underhaug MULTISVANS (Multi-fork)

The Underhaug Multisvans is a multi-fork implement for front or rear mounting –suitable for all transportation tasks. It is easy to adapt to all types of front loaders / tool carriers. Can also be delivered with standard 3-point connection.

A unique tool

The Underhaug Multisvans is a unique multi-tool for handling stone and many other loading and transportation tasks such as: silage, dry manure, firewood, straw and hay bales, pallets etc. This is a real multi-fork implement! Robust frame design The frame is made of solid square tubes. The entire structure is reinforced with Kverneland's unique steel heat treatment method. This applies also to the tines.

Different widths, tine spacing and tine types

Underhaug Multisvans can be delivered in widths of 1.5 m, 2 m, 2.5 m and 3 m. Available with tine spacings 10 cm, 15 cm, 20 cm or 30 cm, with straight or curved tines. The cranked tines are especially suitable for various loading tasks and for gathering stones on top of loose soil. It's not necessary to lower the frame completely down to the ground. The result is better separation and less wear. The result is better separation and less wear on the cross beam.

Efficient

Underhaug's Multisvans with a hydraulic top linkage is an efficient multi-fork for breaking and transporting stones and roots. Mounted on a front loader it is a useful implement for handling silage, dry manure, stones etc. The four side tines provides safe handling and transportation with a full load. By dismantling some tines, Multisvans can also be used as a pallet fork.

Various couplers

As standard Multisvans is delivered without connection brackets/ couplers. Choose between: Trima, Ålø, Bergsjø, Ålø type III, Large Volvo, Small Volvo and Stoll. In addition we can deliver tilt-frame (mechanical) for three-point linkage.

UNDERHAUG MULTISVANS (MULTI-FORK)



Working width	#Tines	Tine spacing	Weight	Frame width	Frame height
150	19	10	238	171	58
150	23	10	261	171	58
150	14	15	203	171	58
150	18	15	231	171	58
150	11	20	177	171	58
200	23	10	288	211	58
200	27	10	305	211	58
200	17	15	246	211	58
200	21	15	274	211	58
200	13	20	207	211	58
250	33	10	399	272	58
250	29	10	371	272	58
250	21	15	316	272	58
250	25	15	344	272	58
250	17	20	288	272	58
250	11	30	321	272	117
300	37	10	449	312	58
300	33	15	421	312	58
300	19	20	324	312	58
300	13	30	367	312	117

Length: curved= 960mm (241181), straight= 980 mm (241161), straight=1240 mm (241162)

Order number
 7716 Combi coupler HMV/Trima/Triangle
 7750 welded Trima/Ålø/HMV coupler, painted
 7751 welded Triangle, painted

7752 welded Euro Quick coupler, painted
 241454 3-point w / tip Multisvans
 241455 3-point Multisvans
 360130 SMS / Trima / HMV Bale Fork (w / 2 pcs. M24x120)



A robust forage unloading wagon with excellent weight distribution

Versatility: Transporting grass, unloading grass silage into silo or as a stationary silage cutter. Well proven by thousands of farmers.

The durability is impressive. If it can tackle tough Norwegian conditions with slopes and rough terrain it can be used anywhere! The wheel axle is mounted at the rear of the wagon, this means that up to 25% of the total weight is transferred to the tractor. UH 7028 comes as standard with adjustable track width. This ensures safety when driving on side slopes. The drawbar is also adjustable. Large wheels LP500x15.5" are standard. As an option bigger wheels than those ones standard mounted, to improve flotation and stability. Extensions to increase loading capacity as an option. This increases the load capacity by 30-50%. The discharge roller (option) spreads the grass into the silo. In many cases the discharge roller can replace the manual leveling in the silo. NEW: Declutching on the discharge roller. Thus, it's easy to switch between silo filling and feeding.

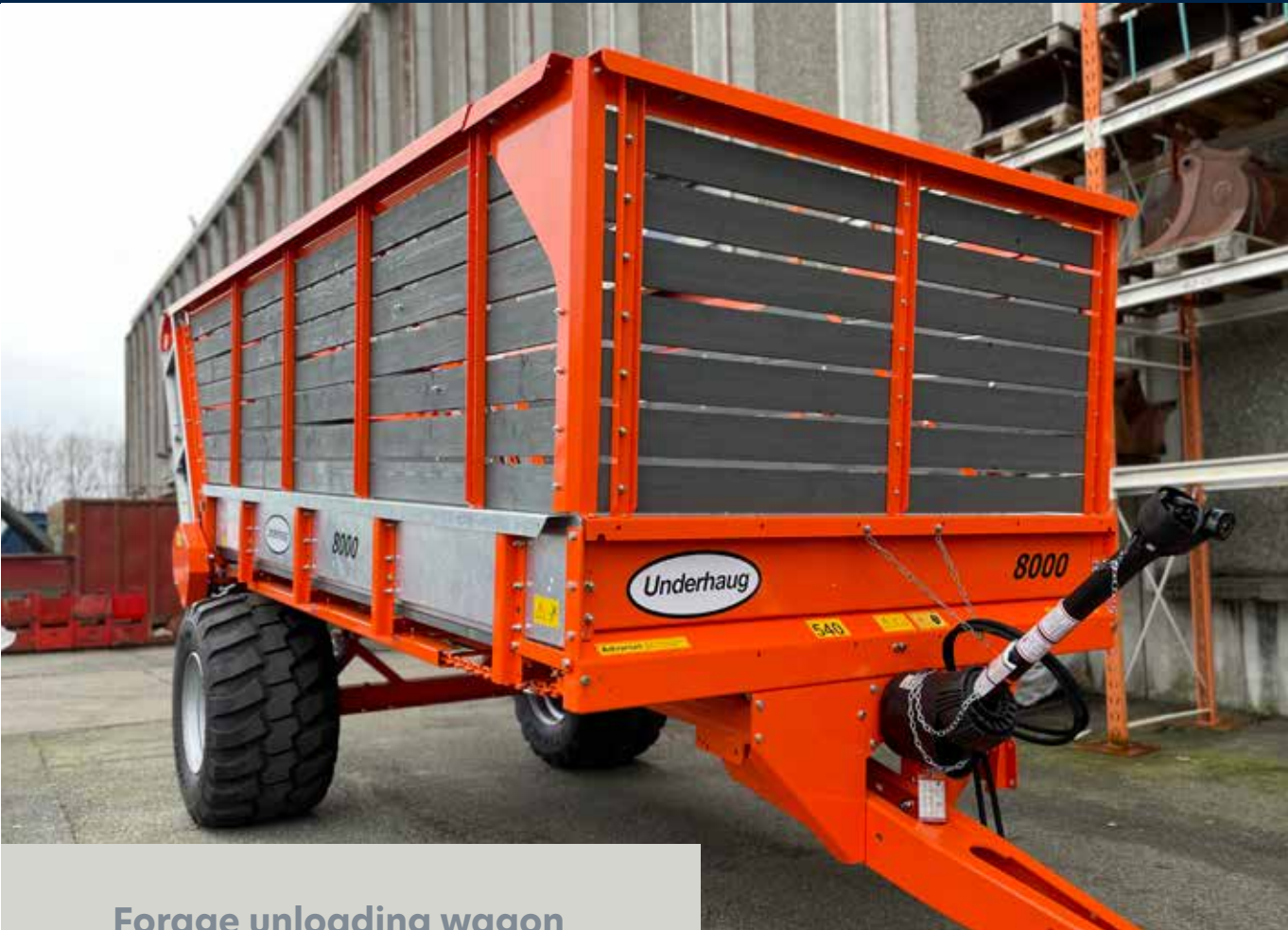
Underhaug Forage Unloading Wagon can be used together with a automatically controlled silage feeder. Options: Various wheel sizes, grass extensions, silage cutter and discharge roller etc.

	UH-7028
Total length	596 cm
Total height	237 cm
Flat bed length	370 cm
Flat bed width	170 cm
Frame height	138 cm
Payload	4000 kg
Unladen weight:	1300 kg
Track width	1,50-1,80

Wheel options
 500/50-17 Radial TL
 600/50/22.5 159 D radial
 650/40/22.5 150 D radial
 710/35/22.5 157 D radial

(Optional)
 Sealing screen, Discharge roller, gras catcher, Light package.
 Lime and fertilizer spreader. Gear motor (4kW three-phase) for use as a stationary operation silage cutter. Lights: Bracket for lactic acid





Forage unloading wagon with high capacity

The scraper floor is hydraulically driven - a "must" for unloading into a tower silo.

The durability is impressive. If it can tackle tough Norwegian conditions with slopes and rough terrain it can be used anywhere! The wheel axle is mounted at the rear of the wagon, this means that up to 25% of the total weight is transferred to the tractor. UH 7028 comes as standard with adjustable track width. This ensures safety when driving on side slopes. The drawbar is also adjustable. Large wheels Lp600x15,5" are standard. As an option bigger wheels than those ones standard mounted, to improve flotation and stability. Extensions increases the load capacity by 30-50%. The discharge roller (option) spreads the gras into the silo. In many cases the discharge roller can replace the manual leveling in the silo. NEW: Declutching on the discharge roller. Thus, it's easy to switch between silo filling and feeding.



	UH-8000
Total length	684/706 cm
Total height	256-347 cm
Flat bed length	408 cm
Flat bed width	215 cm
Frame height	
Payload	
Unladen weight:	2200 kg
Track width	

Wheel options
600/50/22.5 159 D radial
710/35/22.5 157 D radial

(Optional)
Side walls extensions, Grass catcher,
Discharge roller, Light package,
Sealing screen



	UH-8001
Total length	684/706 cm
Total height	256-347 cm
Flat bed length	408 cm
Flat bed width	215 cm
Frame height	
Payload	
Unladen weight:	2200 kg
Track width	

Wheel options
 600/50/22.5 159 D radial
 710/35/22.5 157 D radial

(Optional)
 Side walls extensions, Grass catcher,
 Discharge roller, Light package,
 Sealing screen

NEWS 2022!

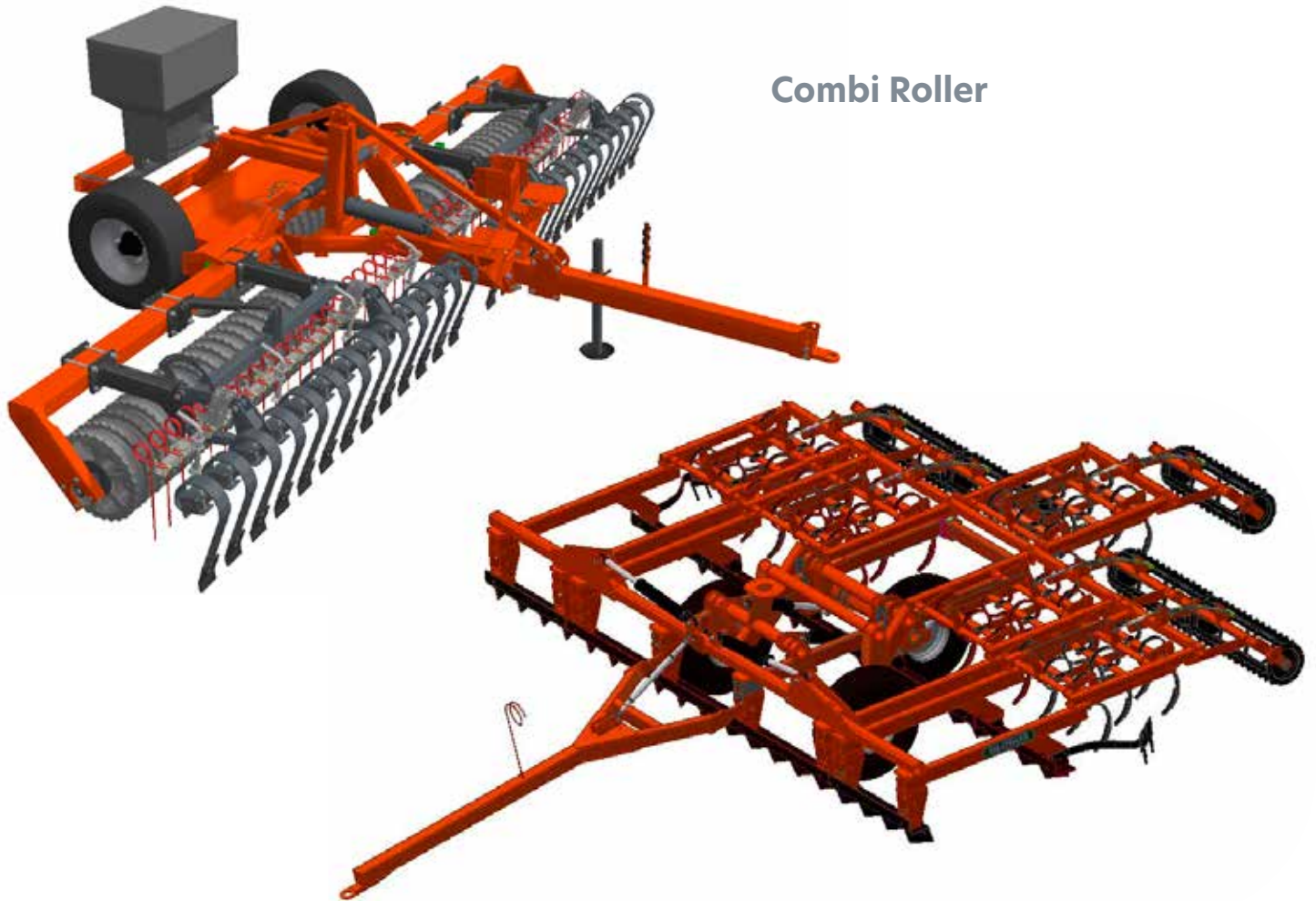
Forage Unloader Wagon with hydraulic rear gate. The perfect implement for filling silos.

High capacity Forage Unloader Wagon, low unladen weight, low ground pressure. Hydraulically driven scraper belt - Perfect for silage pit.

The durability is impressive. If it can tackle tough Norwegian conditions with slopes and rough terrain it can be used anywhere! The wheel axle is mounted at the rear of the wagon, this means that up to 25% of the total weight is transferred to the tractor. UH 7028 comes as standard with adjustable track width. This

ensures safety when driving on side slopes. The drawbar is also adjustable. Large wheels LP600x15,5" are standard. As an option bigger wheels than those ones standard mounted, to improve flotation and stability. The discharge roller (option) spreads the gras into the silo. This increases the load capacity by 30-50%. The patented discharge roller (option) is a good investment. It spreads the gras gentle and accurate in the silo. In many cases the discharge roller can replace the manual leveling in the silo. NEW: Declutching on the discharge roller. Thus, it's easy to switch between silo filling and feeding.





Combi Roller

Leveling harrow

The leveling harrow prepares a fine, structured, and leveled seedbed for uniform plant development - often in just one pass to save costs. The double leveling boards with durable fins levels and crumble the ground without clogging.

The harrow sections have three rows of tines close together. This guarantees an optimum size distribution of soil aggregates with fine particles at the bottom and larger particles on the surface.

This ensures good seed-to-soil contact and a coarse finish to avoid capping.

The spring-loaded cage rollers leave a smooth and firm finish. In addition it stabilizes the harrow longitudinally.



Background

Globus has been producing implements and equipment for Norwegian farmers for over 100 years. We are therefore proud of being one of the oldest manufacturers of agricultural implements in Norway! We deliver user-friendly products of high quality and durability. To ensure this, all production takes place in Norway. All product development, welding, surface treatment and assembly as well as testing takes place on our own premises in Brumunddal. Our employees work every day to ensure that you get a product you are happy with! We believe in the Norwegian farmer and the contractors!



1911

In 1911 Nils Arntsen Ambli moves the business to Brumunddal and establishes Globus A/S. From here the first threshing machine was delivered in 1914. For many years threshing machines and grain and seed cleaning machines was the main products.

1928

From 1928 horseshoes were produced in a separate department at the factory. Nils Arntsen Ambli designed the production machines for horseshoes, with an impressive capacity of 5 horseshoes per minute.



1949

In 1949 a record was set for the delivery of threshing machines with 260 units. The next year the factory had 105 employees and 8500m² of production premises. The factory was at that time one of the largest of its kind in Norway.



1955

In 1955, the factory was sold to Kverneland and production was gradually switched to producing implements and machines for tractors.

1957-1965

Stokland's well-known seed drill was launched in 1957, and between 1962 and 1965 there were 2500 units produced per year. The machines were also exported to many countries.



1972

In 1972, the first Globus stone picker was launched, the well-known S Stone picker, also known as "The Tower Stone Picker". The following year the stone rake was launched, first as a 4m model and later also as a 3m.



1986

The first Globus snow blower was launched in 1986 when Globus bought the rights to the Hokus snow blower from O.L. Engen in Moelv. Kverneland was restructured in 1987 and at the same time the production rights for stone equipment and snow blowers were sold to Reidar Larsen and Bjørn Witsøe.

2003

In 2003 Production of excavator buckets and accessories began when Globus took over the production rights from Moelv Engineering.





GLOBUS

Globus knows all about snow

Globus has been producing implements and equipment for Norwegian farmers for over 100 years.

To ensure this, all production takes place in Norway. All product development, welding, surface treatment, assembly as well as testing takes place on our own premises in Nærbø. Our employees work every day to ensure that you get a product you are happy with!

We believe in the Norwegian farmer and the contractors!


SNOW BLOWERS

Let it snow, let it snow, let it snow!

Okay, snow for Christmas is always welcome. But otherwise, it is - to put it mildly - a nuisance for farmers who want their work done.

Luckily, there are such things as snow blowers. At Herde, we produce six different models - all are made by Globus and come with a three-year fabrication guarantee. Snow blowers for small tractors, for large tractors, and for carriers. V-models. Easily accessible lubrication points. Wear parts rapidly replaced.

In short: To fight Jack Frost, we have what your customers need. Let it snow!



«Globus snow blowers are solid and long-lasting. No downtime, solid steel, efficient, high capacity.

- Øyvind Morud, General manager at Morud & Heimlund AS





GSF 245-18 - The All-rounder

V-snow blower GSF 245 is the smallest of our V-models. 245 cm working width and 85 cm impeller provides high capacity and long throwing range. The rear wear skid next to the impeller house: providing excellent float and perfect adaptation to the ground.

GSF 255-18 - For the toughest tasks

V-snow blower GSF 255 is a high capacity, thoroughly tested V-type snow blower for professionals. 255 cm working width and 90 cm impeller provides very good capacity and long throwing range.



GLOBUS V-TYPE SNOW BLOWER	GSF 245-18	GSF 255-18	(OPTIONAL)
Working width	245 cm	255 cm	Wheel kit complete
Working width with 1 side wing	265 cm	275 cm	Side wing, left side
Working width with 2 side wings	285 cm	295 cm	Side wing, right side
Impeller diameter	85 cm	90 cm	Tool Box
Weight	920 kg	1180 kg	
Power requirement, hp	From 100 hours	From 130 hours	



Hinged feeding blades; adjustable to minimize the clearance between the blades and the V-shaped intake housing.



Chute rotation: New larger 50cc hydraulic motor.



Grease Fittings on all links of the Chute deflector.



Two skid shoes at rear, next to the impeller house: providing excellent float and perfect adaptation to the ground.



2-stage snow blower GTF 235 and GTF 250

GTF 235 and GTF 250 is one of the best-in-class 2-stage snow blowers. Extended use of high quality Hardox and Strenx steel in the chassis, as well as Hardox 450 in the impeller, impeller housing and intake auger.

The wear blades are made of Hardox 500. Powerful driveline with duplex chain, large solid gearbox and high-quality bearings. Parts susceptible to wear have a long service life and low operating costs.

The drive transmission is provided with a shear bolt torque limiter against overloads and foreign bodies.

Surface treatment!

Sandblasted - degreased and primed, before painting with 2 component varnish.

The snow chute is designed to give the user full control of the direction of the snow. You can also direct the snow into the space between the tractor and the machine to avoid leaving snow in driveways. The chute can be folded down for easy maintenance and is also fitted with grease nipples for all joints to expand the chute's lifetime.



Easy access to shear pin on intake auger



Greasing points on all spout links.



Solid Duplex 1" chain.



Chute rotation: New larger 50cc hydraulic motor

GLOBUS 2-STAGE SNOW	GTF 235	GTF 250
Working width	235 cm	250 cm
Impeller diameter	70 cm	80 cm
Intake auger diameter, cm	45 cm	45 cm
Weight	800 kg	900 kg
Power requirement, hp	70	80

(OPTIONAL)

- Wheel kit complete
- Side wing, left side
- Side wing, right side
- Hydraulic side wing



GTF 255-18 and GTF 275-18

The number one snow blower for huge amounts of snow!

GTF 255 and GTF 275 is one of the best-in-class 2-stage snow blowers. Extended use of high quality Hardox and Strenx steel in the chassis, as well as Hardox 450 in the impeller, impeller housing and intake auger.

Reversible Hardox 500 scraper blade. Parts susceptible to wear have a long service life and low operating costs. Large intake auger and 85 cm impeller- exceptional work output! The snow blower is equipped with a large center-mounted gearbox fitted with automatic overload protection on each side towards the intake augers.

Can be pulled or pushed as standard. Option: Heavy duty gearbox for front- and rear mounting, 1000 rpm. Optional kit for front mounting. Fast and easy changing between rear pull and rear push mode.

The snow chute is designed to give the user full control of the direction of the snow. You can also direct the snow into the space between the tractor and the machine to avoid leaving snow in driveways. The chute can be folded down for easy maintenance and is also fitted with grease nipples for all joints to expand the chute's lifetime.



Can be pulled or pushed as standard. By using a gear-box-kit it can also be mounted in front of the tractor



Large solid gearbox and automatic overload device on intake auger.



Chute rotation: New larger 50cc hydraulic motor

GLOBUS TWO-STAGE SNOW	GTF 255-18	GTF 275-18	(OPTIONAL)
Working width	255 cm	275 cm	Wheel kit complete
Working width without side wings	235 cm	255 cm	Side wing, left/right
Working width with 1 side wing	275 cm	295 cm	Hydraulic side wing
Working width with 2 side wings	295 cm	315 cm	Side knife, left/right
Impeller diameter	85 cm	85 cm	
Intake auger diameter, cm	85 cm	85 cm	
Weight	1200 kg	1400 kg	
Power requirement, hp	130 hp	130 hp	





Globus self-loading salt/ sand spreader, now as std fully galvanized

1600 x 2.40 available with individual leaf springs placed in the front (towards the tractor). This minimizes the risk of bent springs when filling.

Salt and sand spreaders from Globus have a simple and reliable construction. The large agitator minimizes the risk of clumping and packing.

Metering rotor with Hardox lugs. The discharge is easy to adjust with rubber flaps operated with an adjustable spring on the side of the hopper.

The machine can be delivered with optional mounting system. Hydraulic flow control and tarpaulin are available as an option.



SALT AND SAND	GSK 900	GSK 1600
Spreading width, cm	200	240
Transport width, cm	225	265
Weight, kg	450	550

GLOBUS CROSSKILL ROLLER



CROSSBOARD	GRS 452	GRS 542	GRS 612
Working width, cm	450	540 rpm	610
Weight, kg	460	515	565

Globus triple CrossKill roller

With high operational reliability and stable construction, the roller is easy to maneuver in a working position as well as during transportation. All functions for adjustment are hydraulically operated. In transport position the side wings rest in cradles which provides good weight distribution and stability. Globus CrossKill rollers are available in 4.5 - 6.1 meters. All functions for changing from transport to working position are hydraulically operated. In transport position the side wings rest in cradles, which provides good weight distribution and stability. The parking jack ensures safe parking and a separate holder for the hydraulic hoses is standard. The roller requires two double and one single acting rear remote control valves.



Thanks to the parallel linkage on the CrossBoard the working angle is the same regardless of the working depth

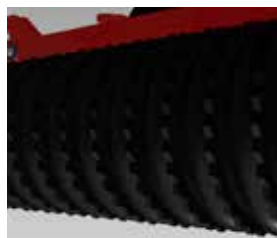


Crosskill ring Ø450 mm and Ø490 mm crushes clump.

GLOBUS CROSSKILL ROLLER	GRS 450CR	GRS 540CR	GRS 610CR
Working width, cm	450	540 rpm	610
Transport width, cm	245	245	245
Ring diameter, cm	50	50	50
Weight, kg	2020	2340	2520



Integrated stone box on the center section. Conveniently unloading by lifting the side sections



Solid 50 cm Cambridge-rings for effective packing.

Globus triple Cambridge roller

With high operational reliability and stable construction, the roller is easy to maneuver in a working position as well as during transportation. All functions for adjustment are hydraulically operated. In transport position the side wings rest in cradles which provides good weight distribution and stability. The Globus Cambridge rollers are available in 4.5 - 7.0 meters.

The ground pressure is nearly the same over the entire working width. You benefit from an even surface, where all plants get the same growing environment.

GLOBUS CAMBRIDGE ROLLER	GRS 450	GRS 540	GRS 610	GRS 700
Working width, cm	450	540 rpm	610	700
Transport width, cm	245	245	245	245
Ring diameter, cm	50	50	50	50
Weight, kg	2020	2340	2520	2900



Rock solid work

In a way, the Stone Age never ended. Any – farmer, no matter where they live and what they grow, still need to remove stones, big or small, from time to time.

At Herde, we live among rocks left by glaziers long ago, new stones popping up every year.

And we have learned how to deal with them. Our three Globus stone pickers perform their duty in a way that will make your customers very satisfied.

We also have a variety of stone rakers from Globus → fit for all types of agricultural fields. Advanced adjustments and multi-functionality

GLOBUS GSR STONE RAKE



Globus GSR stone rake

GLOBUS GSR mechanizes the task of stone picking and removal.

The working depth is down to 10 cm, leaving a well-prepared field cleared of stones. Large clods are crushed, and the surface is leveled. Afterwards, the rows of stones can easily be collected by one of our stone pickers.

The tines are made of hardened boron steel with high quality and durability. The stone rakes are delivered with standard or double number of tines. Double number of tines is suitable on smaller stones.



GLOBUS STONE RAKE	GSR 32300	GSR 63300	GSR 44400	GSR 87400
Working width, cm	300	300	400	400
Standard / double, number of tines	STD	Double	STD	Double
Transport width, cm	345 (130*)	345 (130*)	130	130
Number of tines	32	63	44	87
Weight, kg	700	815	885	1040
Power requirement, hp	45	45	60	60

* Travelling bar as an option. PTO-shaft included on all models



Wheel axle with hydraulic lift gives a tipping height of up to 2.5 m.

POSTED HERE



Multiblade intake shear
Working depth down to 20 cm

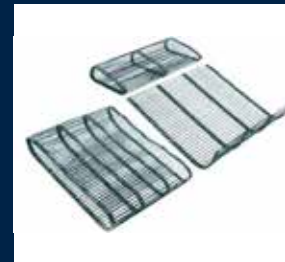
Globus SB

Working depth down to 20 cm

Stone picker Globus SB is designed for efficient small stone picking and high operating safety. Stone picker SB has a working depth from 0 to 20 cm on well cultivated land or after raking with a stone rake.

The stone hopper has a capacity of 3400 kg and a tipping height of up to 2.5 m which makes it easy to unload the stones into larger trailers.

STONE PICKER	TEMPI	SB	S
Working width, cm	160	160	160
Transport width, cm	260	195	150
Working depth, cm	0 - 10	0 - 20	0 - 15
Power requirement, hp	60	70	60
Capacity stone hopper,	2300	3400	-
Grate spacing	35	28/33/44	-
Loading height, m	1-2. 5	1 - 2	1. 75
Weight, kg	2080	2075	1170



Different spacing on web bars.
From 16mm up to 44mm.



TEMPI STONE PICKER



Wheel axle with hydraulic lift gives a tipping height of up to 2 m.

Globus Tempi Stone Picker

The Globus Tempi Stone Picker is a one-man operated stone picker for smaller stones. It's constructed to pick stones on the surface down to a maximum depth of 10 cm on loose, well-cultivated land. Stones and soil are brought into the hopper by a rotor over a riddle where stones and soil are separated.

The stone hopper has a capacity of 2300 kg and a tipping height of up to two meters.





Globus modell S

Stone picker designed for rough conditions / clearing land.



Solid, wide springs for high durability and long lifetime. The tines are produced in hardened boron alloy steel.



The grate is produced in hardened boron alloy steel. Various grate spacing

Stone picker Globus S is perfect for picking stones on recently cultivated land. The stone picker is designed to handle big stones. The stones are directed from the row onto the horizontal section of the riddle bars via a wedge shaped blade and then conveyed up the vibrating elevator to a horizontal discharge platform where they drop into a trailer running alongside. By means of the flexible steel tubes and an elevator, soil and pebbles are separated from the rocks and stones. The elevator lifts rocks and stones on-the-fly into a trailer.

The stone picker is connected to the tractor's three point linkage and is driven by the tractor's PTO. Standard load height 1.75 m.





Excavator Buckets

Produced in sizes from 28 liters to 400 liters. Width from 360 mm to 800 mm. Can be delivered for most types of Quick Couplers or directly attached to the machine. Teeth or blade as desired.

All Excavator buckets are made of high-quality steel, designed to last a long time and withstand a tough working environment. Buckets can be delivered for most types of Quick Couplers or directly attached to the machine. All buckets listed below are equipped with the Kvernex reversible tooth system. If you prefer another system, most models can be delivered with teeth from well-known suppliers such as Cat, Volvo, MTG, Kingmet etc. As an option for buckets with the Kvernex front we also deliver Cutting edge for all models.

Model

GVG 28-S30 FF
GVG 28-S30 M16 KVX
GVG 60-S30 FF
GVG 60-S30 M16 KVX
GVG 90-S30 FF
GVG 90-S30 M16 KVX
GVG 120-S40 FF
GVG 120-S40 M20 KVX
GVG 160-S40 FF
GVG 160-S40 M20 KVX
GVG 180-S40 FF
GVG 180-S40 M20 KVX
GVG 250-S40 FF
GVG 250-S40 M27 KVX
GVG 280-S40 FF
GVG 280-S40 M27 KVX
GVG 400-S50 FF
GVG 400-S50 M27 KVX



Excavator Narrow Trenching Buckets

Availability in sizes from 20 liters to 200 liters. Width from 160 mm to 500 mm. Teeth or blade as desired. Our buckets come as standard with S Quick-Coupler.

Model

CVG 28-S30 FF
GVS 28-S30 M16 KVX
CVG 60-S50 FF
GVS 65-S40 M20 KVX
CVG 110-S40 FF
GVS 110-S40 M20 KVX
CVG 160-S50 FF
GVS 160-S50 M27 KVX
CVG 300-S60 FF
GVS 300-S60 M36 KVX



Excavator Clean-Up buckets - fixed

Availability in sizes from 50 liters to 465 liters. Width from 700 mm to 1400 mm. Hydraulically tiltable with fixed coupling for tiltrotator or tilt. Our buckets come as standard with S Quick Coupler.

Model

GPF 50-30
GPF105-S30
GPF 135-S30
GPF 135-S40
GPF 175-S40
GPF 250-S40
GPF 300-S40
GPF 330-S40
GPF 360-S40
GPF 360-S50
GPF 465-S50



Clean-Up buckets - hydraulic tilt

Availability in sizes from 50 liters to 360 liters. Width from 700 mm to 1300 mm. Hydraulically tiltable with fixed coupling for tiltrotator or tilt. Comes as standard with S Quick Coupler.

Model
GPH 50-S30
GPH 105-S30
GPH 135-S30
GPH 135-S40
GPH 175-S40
GPH 250-S40
GPH 300-S40
GPH 330-S40
GPH 360-S40
GPH 360-S50



Excavator Riddle Buckets

Availability in sizes from 150 liters to 416 liters. Width from 700 mm to 850 mm. Teeth or blade as desired. Our buckets comes as standard with S Quick Coupler.

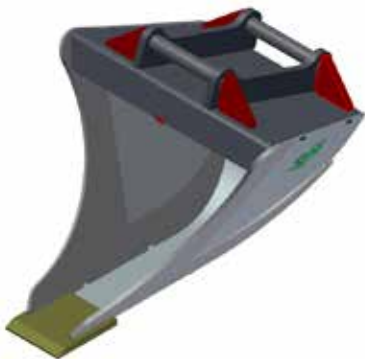
Model
GVF 170-S30 M20
GVF 170-S30 ST
GVF 260-S40 M20
GVF 260-S40 M27
GVF 416-S50 M27



Excavator Sieving Buckets

Volume 220L and 400L. Only fixed front blade with similar shape as a Clean-Up Bucket. Our buckets come as standard with S Quick Coupler.

Model
GVF 275-S40
GVF 400-S50
GVF 700-S60
GVF 900-S70



Trench Buckets (V-shape)

Availability in sizes from 28 liters to 300 liters. Teeth or blade as desired. Our buckets come as standard with S Quick Coupler.

Model
GVB 28-S30
GVB 45-S30FF
GVB 45-S30
GVB 70-S40
GVB 200-S50
GVB 275-S50
GVB 300-S60
GVB 650-S60



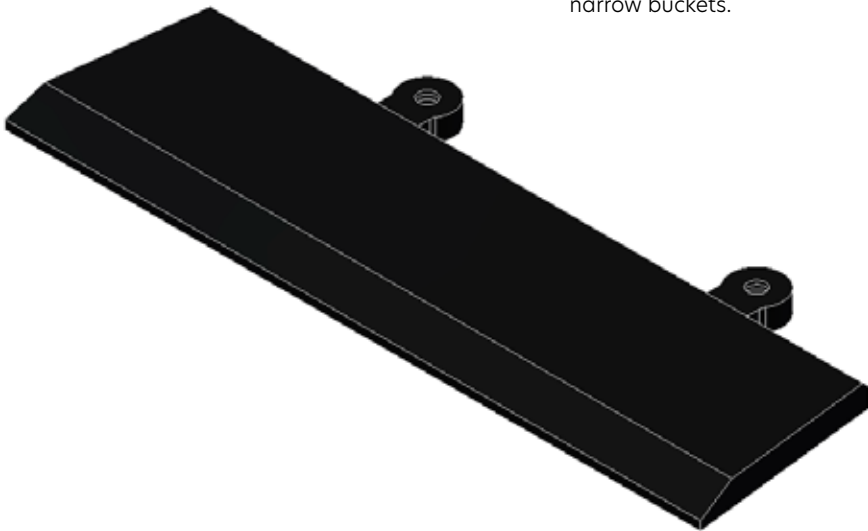
Ripper

For Excavators 2 tons to 24 (35) tons. Replaceable teeth
Comes as standard with S quick coupler.

Model
 CVT 2 - 4 S30
 CVT 4 - 5 S40
 CVT 4 - 6 S40
 CVT 4 - 6 S50
 CVT 6 - 10 S50
 CVT 9 - 15 S60

Cutting edge system

Cutting blade for a wide range
of brands/models of digging buckets and
narrow buckets.



Model
 CVI 20 M20
 CVI 25 M16
 CVI 33 M16
 CVI 33 M20
 CVI 33 M27
 CVI 40 M16
 CVI 40 M20
 CVI 40 M27
 CVI 40 M36
 CVI 46 M16
 CVI 50 M16
 CVI 50 M20
 CVI 50 M27
 CVI 50 M36
 CVI 60 M16
 CVI 60 M20
 CVI 60 M27
 CVI 60 M36
 CVI 60 M48
 CVI 70 M20
 CVI 70 M27
 CVI 80 M27

Background

Rekord System has been producing and selling Rekord products since 1968. With their well-known Rekord products Landbruk & Maskin AS is also well established in the fish industry, slaughterhouses, shipping, offshore and other industries.

Pumps, mixers and cutting mills are the main elements here, but we also deliver tanks etc. We have a long-term collaboration with well-known factories such as Vogelsang, Doda, Suma and Joskin, all of them among the most reputable suppliers in Europe.

Landbruk & Maskin AS is a subsidiary company owned by BR Industrier. The group consists of 10 companies divided into 4 divisions and employs 1200 people. We want to build a winning culture where we believe nothing is impossible, and we want to develop jobs for the future. We do this with strong commitment, courage and a willingness to think untraditionally.



1968

Start-up at Verksgaten 45 in Stavanger. FIAT Tractors, Motorstandard two-wheel tractors, Honda Power Tiller, as well as traditional agricultural equipment. Manure-handling equipment (dry and slurry).

Early 70s

Moves to Lura in Sandnes. The same business focus, but with even more focus on Manure equipment.

1982

Relocating to new premises in Maskinveien 2 on Forus.

1986

Ends tractor sales. Even greater specialization in Manure equipment and liquid treatment systems for agriculture. Starts producing Manure pit door.



1988

Import and production of Umbilical Slurry Spreading / Slurry spreaders and Trailing shoe spreaders.



1989

Starts own production of Slurry tankers



1990

Ends selling ordinary agricultural products, except for Manure/Slurry equipment. Higher focus on tanks and Slurry tankers for industrial use. Full focus on Manure / Slurry equipment and liquid treatment systems.

1994

Higher focus on Liquid treatment systems for industry. Fish, slaughterhouse, shipping, and Oil spill preparedness.



1996

BRI acquires L & M. Moving to Forusbeien in Bærheim. Production of Manure / Slurry equipment and liquid treatment systems continues.



1997

Agreement with CIFI regarding selling our systems for handling and spreading Manure/Slurry.



“Records with Rekord slurry

For more than 50 years we have proudly produced and delivered unique products to Norwegian agriculture, fish and industry. Over the years we have produced and sold many Rekords. In fact, the name “Rekord” is better known than the producer’s name. So for this reason we have decided that from now on we will only talk about our Rekords. In that way Rekord's producer, Landbruk & Maskin, can concentrate on their main task: To produce even more Norwegian Rekords.




**REKORD
SYSTEM**



**REKORD
SYSTEM**

Slag under
belttestaden
må ein berre
bøye seg fir
OCOR



"I got the slurry tanker
tailored the way I wanted it:
Solid, long-lasting - Made
in Norway - just like the
Norwegian wild nature!"

- Ottar Flatland - farmer, Seljord



Slurry tanker with low pressure pump (P)

Vogelsang-spreader

- Reliable pumps.
- Efficient Vogelsang-spreader provides even distribution.
- High-mounted pressure pipe - no need for valves
- Can be equipped with side spreader (slurry plate spreader).
- Large filling hole provides easy filling
- Optional: Internal tank agitator
- Hydraulic hatch operation, brakes, etc.



Slurry tanker with high pressure pump (H)

Efficient Vogelsang-spreader provides even distribution.

- Can be equipped with side spreader (slurry plate spreader) or swivel spreading gun, also with vertical movement.
 - Large filling hole provides easy filling
 - Hydraulic hatch operation, brakes, etc.
 - High pressure centrifugal pump with an output up to 5000 L / min.
 - Maximum pressure 7 or 11 bar. Spreading width up to 40 - 70 m (w/ spreading gun).
 - Equipment and accessories as for (P).
 - Highly recommended: Original Vogelsang-spreader.
 - Reliable pumps.
- High-mounted pressure pipe - no need for valves

SELF-PRIMING SLURRY TANKER


Self-priming tankers with vacuum or Vogelsang rotary piston pump

Combi slurry tankers with vacuum pump for loading and unloading. Also possible with spreader gun (requires the option high-pressure pump).

Slurry tanker with rotary piston pump

Can also be delivered with spreading gun. Self-loading.



Capacity	3 300 L	5 000 L	6 500 L	8 500 L	9 400 L	10 500 L	12 000 L
Standard wheels	400 x 15.5	480/70 R30	480/70 R30	460/85 R38	460/85 R38	23.1 x 26	28L x 26
Total height	190 cm	215 cm	215 cm	240 cm	240 cm	260 cm	261 cm
Total width	200 cm	240 cm	240 cm	265 cm	265 cm	280 cm	288 cm
Total length	490 cm	490 cm	605 cm	610 cm	660 cm	730 cm	640 cm
Weight, approx.	1000 kg	1320 kg	1500 kg	1750 kg	1870 kg	2050 kg	2410 kg

Record Z3 and Z4: For mixing in open or closed manure pit.

Application

For mixing in open or closed manure pit. Can reach over up to 2 meters (high open air manure storage tanks or manure pit gates.)

Technical data

Pipe length 4.0 / 5.0 / 5.5 / 6.0 / 7.0 m. Both mixers are connected to the tractor's three-point linkage and PTO. The mixer can be separated from the tower and used as a horizontal mixer.

Driveline

Standard design with HY driveline for one-way rotation. 6 splines PTO Bearings on mixer tube constructed as a separate module for easy maintenance.

Bearings and propeller

2 axial roller bearings to absorb the axial forces. Ø 35mm propeller axle, tight sealing. Axle oil bath (inside the mixer tube.)



TUBE AND DRIVE SHAFT, PROPELLER, STAND (TOWER)



Tubes and drive shaft

- Galvanized mixer tube \varnothing 121 x 4 mm.
- Drive shaft \varnothing 50mm with internal bearing.
- The tube is filled with ISO VG 68 oil, approx. 40% of the tube volume.

Propeller

- 3-blade dynamically balanced high-capacity propeller.
- Propeller size adapted to the size of the tractor.
- 560 mm 72 kW (98 HP) @1000rpm
- HD 580 mm 88 kW (120 hp)
- HD 620 mm 100 kW (136 hp)
- Galvanized propeller as standard,
As an option hardened steel or ss304.



The stand (tower)

The tower is a robust galvanized construction, produced by Landbruk & Maskin, with powerful angular gears and PTO-shaft between the gears for seamless direct transmission. As standard with fixed tower. Another available option is a telescopic adjustment up and down.





Submersible manure/ slurry mixer

- Electric motor 9 kw or 15 kw.
- 10 m cable, complete bracket with lift hoist
- Start-up cabinet with star-delta starter and fuse conductor



Wall mounted manure/ slurry mixer Z3

For wall mounting.
Attached in core drilled hole \varnothing 200 mm with press plates.
The support leg is mounted near the propeller in the manure storage or on the outside.



LONG SHAFT MANURE PUMP



Model	Driveline	Tube	Ltr./min	Max. pressure	Power	Fuse 400V	Fuse 230V
ATP 160	PTO	6"	12.000	2,5 Bar	80 HK	x	x
ATP 160 XL	PTO	6"	10. 000	4,5 Bar	100 HK	x	x
AEP 160-15	Electric	6"	4.000	2,4 Bar	15 HK	25 Amps	50 Amps
AEP 160-20	Electric	6"	4.500	2,4 Bar	20 HK	35 Amps	63 Amps
AEP 160-25	Electric	6"	6.200	2,4 Bar	25 HK	50 Amps	80 Amps
AEP 160-30	Electric	6"	7.200	2,4 Bar	30 HK	80 Amps	x

Long shaft manure pump

Stationary pump for installation in a manure pit or an indoor manure storage.

For PTO or electric operation.

Can also be delivered with remote control for up/down and mixing / conveying.

AEP (Electrical)	ATP (PTO)
15-30Hk	540 rpm
230v or 400v	59 kW / 80 hp
Galvanized construction	12000L/min
Greased lubricated bottom	Greased lubricated bottom



Long-reach manure pump on stand

ATPS

ATPS pump inclined position with fixed stand. Reach: Over tank approx. 2 meters. Flow 12000 L/min.



ATPU

ATPU Universal pump, inclined or vertical position. The pumps can be delivered with remote control for mixing and conveying.



ATPUH

Universal pump, long reach. Reach: Over tank approx. 2 meters, down 4.5 meter. Hydraulically operation: Mixing/ conveying and lift/lower.





Vacuum-combi

Rekord takes over production of Reime steel slurry tankers

These new vacuum slurry tankers permit a wide range of applications, tailored to your needs. The specially shaped chassis and tank offer a low center of gravity.

Eco spreader (15m) is standard
 Low center of gravity
 Solid construction, brakes as standard
 Fully galvanized tank and frame, 5000 liters / 7200 liters

Model 7200 has a unique frame that enables a wide range of running gears such as various wheels, ordinary bogie and bogie lift. At the same time a very low center of gravity is maintained.

Comes with hydraulic spreading valve and Eco exact spreader
 Filling funnel ready for filling with base pump.
 Wide tailgate provides easier cleaning and inspection. Important after emptying sticky materials.
 Powerful compressor, 6000 l
 Two suction couplings, one left front and one rear
 Suction inlet complete with tap and quick coupling
 Comes complete with brakes, PTO shaft, light and 5m 5" suction hose with end pipe

CombiVacuum high pressure pump, delivered complete with slurry spreader gun, hydraulically operated angle adjustment.

Throwing range 50-60 m.
 Ready for rear / back loading system

Options include:

Hydraulically operated lid on top mounted filling funnel
 Hoses, couplings, etc. on demand
 Various PTO axles and wheel dimensions
 Front coupler head for high-mounted spreader

Background

In late 1932, T. H. Obrestad was an apprentice at Jon Reime. At that time most of the tasks in an ordinary smithy were horse shoeing, repairing carts etc. It was the "good old days", before cars and tractors outcompeted the horse.



1938

In 1938, T. H. Obrestad became a partner. From then on, the company's name was Reime & Co. Little by little, the production of implements required more workshop space. The old smithy was too small. The new building was almost finished when WWII started and put an end to all construction activities.

1950-1972

During the war, repairs of all kinds were carried out, and the company had 10-12 employees. Straw collecting machines for mounting on Sickle Mower were made in their thousands during the war and immediately afterwards. At that time, this was one of few implements for harvesting crops such as grass and grain. The first years after the war it was restrictions and rationing of all kinds of raw materials; it was difficult to re-start the production. The production was limited to the Stump pulling winch «Steinbukken», Riding hillers and Potato spinners. Later they started the production of potato harvesters. From 1950 to 1958 the factory was expanded to a total of 2000 m². In 1959 Jon Reime sold his 50% ownership interest to T. H. Obrestad who then became the sole owner. New products followed; such as systems for NaOH straw-treatment, barn-furnishing etc. From 1959-1972, T. H. Obrestad was the sole owner, but in 1972 Reime & Co was transformed into a limited company with Harald Obrestad as General manager.



1964-1994

In January 1964 construction of a new building was started; it was completed in February 1965. The area of the building was 3200 m², and the company had at that time a turnover of approx. NOK 4 million. At this time the main production was potato harvesters, straw collector and various tractor equipment. In the period from 1963 until the mid-1980s, the factory was expanded in several stages to a total area of approx. 8500 m² Among other things, a galvanizing plant; Reime Zink, was established in 1973. In 1985 Reime AS took over production, furthering development and sales of Erlands Maskin AS' own products. The Manure pit door was still a large product. Erlands Maskin AS had just started production of Slurry tankers with 4100L plastic tanks, based on the pump developed for the Manure pit door. A new series Slurry tankers with 3 sizes and several pump variants was developed in 1986 and further developed over the years. The current design of the smallest Slurry tank came in 1994. The dairy products were moved to the newly started company Reime Landteknikk.



1970-1995

Barn-furnishings with main focus on pigs and cattle has been under constant development since the mid-1970s. In the early 1980s the loose-housing system replaced the traditional stall barn. The collaboration with Funki's Feeding system for pigs was established before 1980. The range of Slurry tankers was expanded with galvanized steel tanks in 1995. Later on new models were produced with plastic tanks up to 15 500L; with a large pump selection and several varieties of spreading equipment



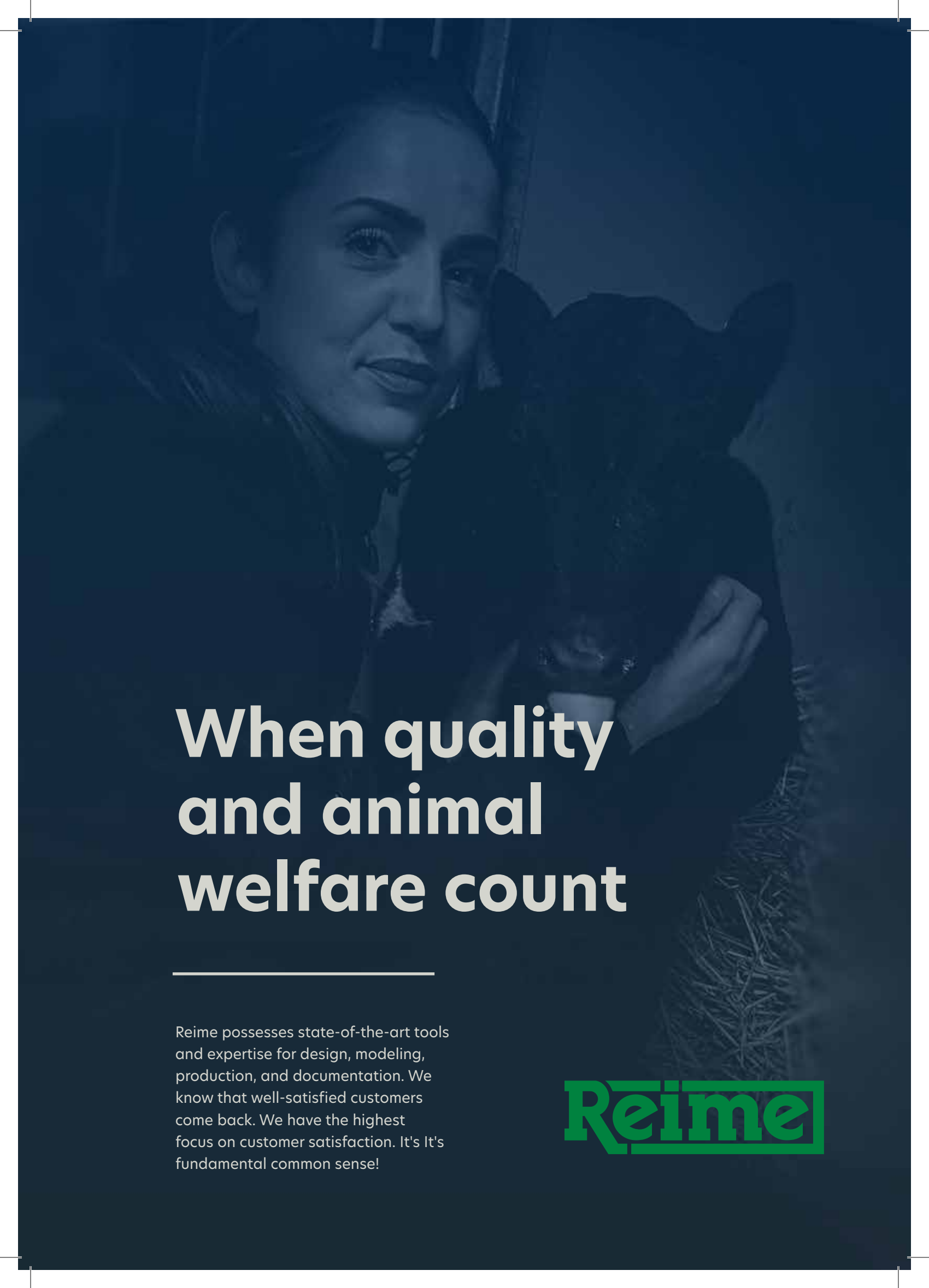
2003

In 2003, the company changed its name to Reime Agri AS. The Reime group fell into an economic crises in 2005. In 2006 Reime Agri AS got new owners. The company again changed its name to Reime & co AS in 2020 and is now incorporated into BRI's new venture; Herde Industrier.

2013

Through product development, production and sales of quality products for agriculture, cattle farming and also industry, Reime AS is today one of Norway's largest manufacturers of agricultural equipment. The largest customers have been AK maskiner and Felleskjøpene. The focus has always been on the Norwegian agricultural market. We also take on special assignments in construction and the food industry. Nofatek was acquired in 2013 and renamed Reime Nofatek. This was our commitment to the food industry, and was later merged with Reime Agri AS.




A woman with blonde hair is smiling and holding a small piglet. The background is a dark, textured surface, possibly straw or hay. The entire image has a dark blue overlay.

When quality and animal welfare count

Reime possesses state-of-the-art tools and expertise for design, modeling, production, and documentation. We know that well-satisfied customers come back. We have the highest focus on customer satisfaction. It's It's fundamental common sense!

The Reime logo consists of the word "Reime" in a bold, green, sans-serif font. The letters are contained within a green rectangular border that has a slight 3D effect.

Reime



"We have been using Reime stalls, headlocks etc. since 1984. They deliver smart, solid, durable and long-life products.

For Reime the customer is central to every step of the process; from the first draft of a product right through to delivery. Products can be adapted to the customer's wishes.

The choice was therefore easy when we built our new barn with loose housing system.

- Bjørn Otto Byberg, Byberg, Sola municipality, Rogaland County.





Reime 4000 - 6000/Litre plastic slurry tankers

Compact, light, and VERSATILE

Lightweight and proven construction. Long lifespan

4000/5670 liters, molded plastic tank, fully galvanized frame

Sump (bowl) for optimal emptying

Standard or high-pressure pump. Option of a self-priming pump

large pump selection and several varieties of spreading equipment.

Adapted to the new Reime Ecospreader.

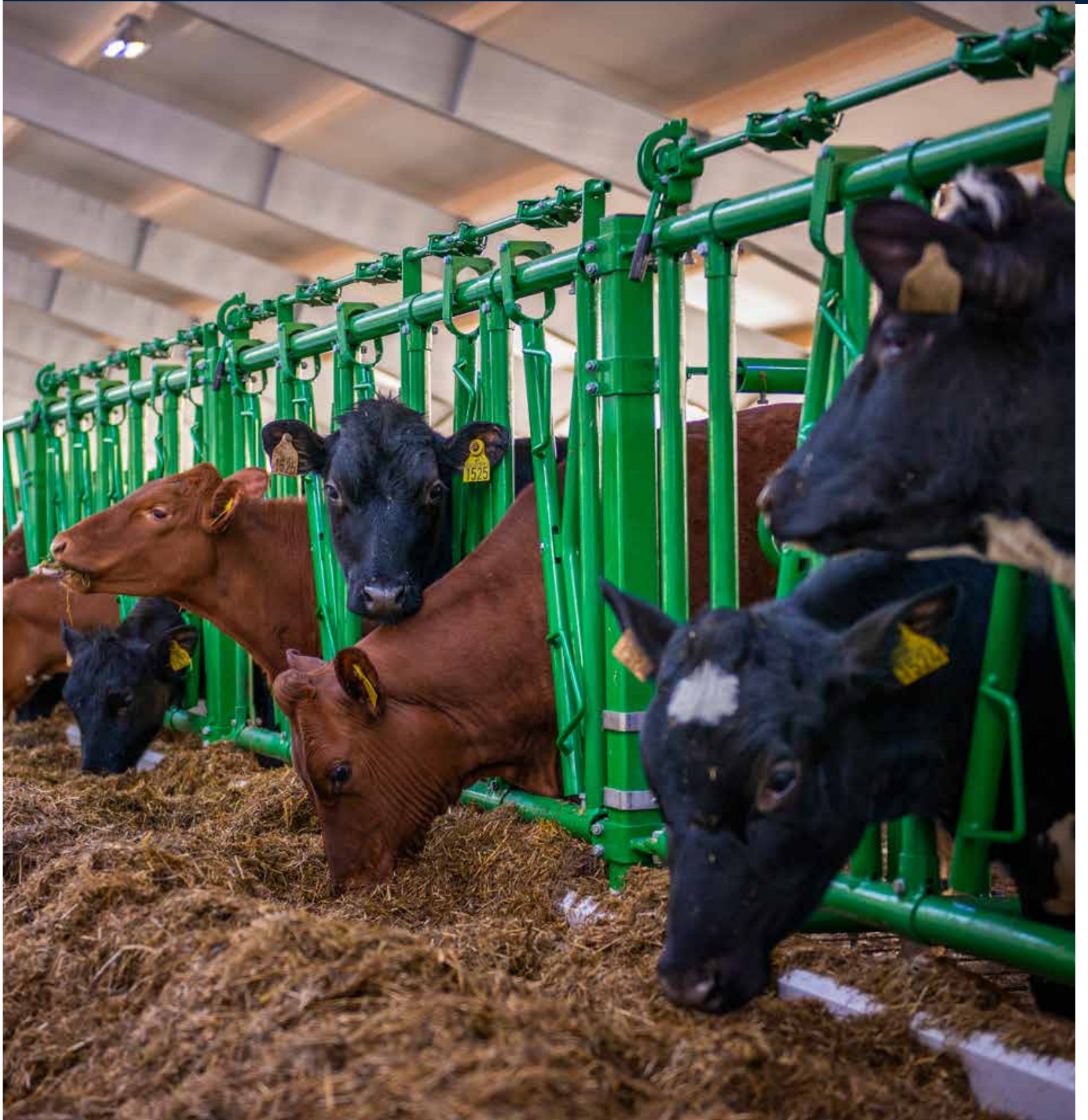
Reime Filling Funnel. Can also be equipped with a lid.

Comprehensive range of various wheels and equipment



Reime P 7500 - P 15500

Reimes P Series slurry tankers with fiberglass tank. Model 7500 L was launched in 2020. Reime P 7500-15500 series slurry tankers have robust and reliable components and an excellent structural chassis design. They come as standard with Reime's new centrifugal pump with screw feeding. As with other Reime slurry tankers, this series can also be fitted with a wide range optional equipment.





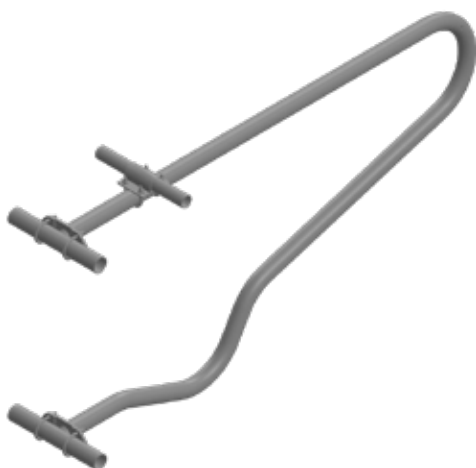
Embla free stall system

Based on the latest research and close collaboration with professional farmers, feedstock advisers and nutritionists in Norway to achieve a high milk yield. Movement, rest and other natural behavior were taken into account. Designed for 3 months calves to cow. Loop tube dimensions 1 ½" to 2".



Maja free stall system

Economical and simple construction. Installation: Connected with anchor bolts or setting in concrete. Movement, rest and other natural behavior were taken into account. Loop tube 1 ½".



Post-Less Freestall System

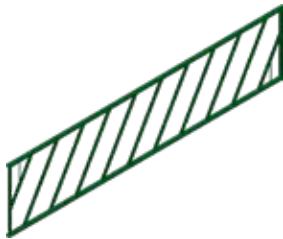
Post-less Freestall System requires less hardware, provides increased headroom, and reduces air restrictions and animal injuries. Easy to adjust mats. Can be mounted in double rows. From 3 months calves to cow. Loop tube dimensions 1 ¼" to 2".



Headlocks

Increased safety for both animals and operators.

Solid design and tubes ensure long life. All moving parts that are in contact with each other are coated with plastic / rubber Available in standard lengths from 101 to 415 cm, or on request special sizes.



Front with diagonal tubes 40

One of our most popular and affordable front panels.

Reduce costly waste of fodder.
Available in standard lengths from 206 to 415 cm, or on request special sizes.



Fixed Feeder Panels

A classic "pulpit" Feeder Panel

Reduce costly waste of fodder. Available in standard lengths from 206 to 415 cm, on request special sizes.



Horizontal fixed Feeder Panels

Flexible horizontal Feeder Panel option, the tubes can be adjusted to adapt to different age groups / animal sizes.

Available in standard lengths from 206 to 415 cm, or on request special sizes.



Feeder Panel Headlock type

Can be closed to keep the animals locked or closed to keep the animals away from the feed tray.

Locks / unlocks all openings at the same time. Sold as separate units Available for all age groups.



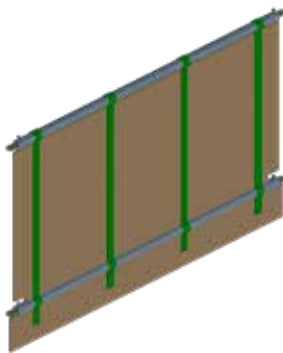
Partitions with vertical tubes

Simple but robust bin partition. 15 cm tube spacing Less risk for animals to be entangled. By means of a locking pin it can be opened as a gate. Available in standard lengths from 56 to 415 cm, on request special sizes. Height 100 or 120 cm.



Partitions with horizontal tubes

With vertical support beams, available in lengths from 56 to 520 cm. Available in 3, 4 or 5-tube version, the latter more adapted to calves. Height 100 or 120 cm.



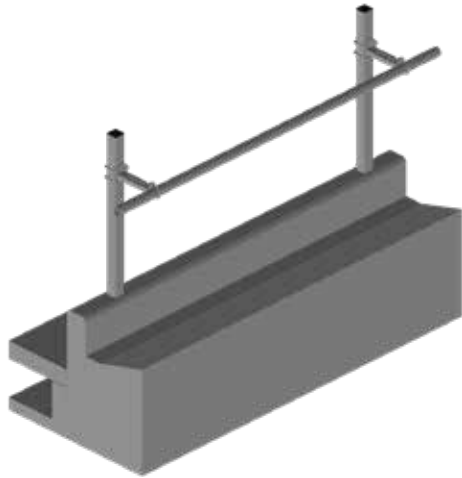
Tight partition panels

Particularly relevant in maternity pens / pens for sick animals Proven solution to keep young calves safe and healthy with a draft-free environment. Raised edge in contact with the floor minimizes the loss of forage. Available in standard lengths from 56 to 415 cm, on request special sizes. On request special sizes. Height 100 or 120 cm.



Telescopic partition panels

High flexibility with telescopic pen dividers. Available in 3 or 4-tube version. Length from 196 cm to 496 cm. Attach to posts, and / or to the loop tube.



Neck bar

Simple solution that gives the animals good access to the feed tray. Comes with adjustable hinges for adjusting the distance from the post to the neck bar. Easy access to the chopped forage. 2" tubes on 70x70 posts.



Recess for drinking bowl

Designed for connection to stall partition sections. It's possible to attach drinking bowls between two pens.



Calf opening

Designed for connection to stall partition sections. For mounting against calf huts (access only for calves)



Portal without threshold

Very easy access for all animals. Solid arch construction - stiffens the gate for extra robustness. For extra robustness: Also available with extra bracket for bolted connection to slatted floors. Height 100 or 120 cm. Door frame 70x70 square tube.



Portal with threshold

Designed for connection to stall partition sections. Robust construction with threshold (tube). Height 100 or 120 cm. 2" tube in the arch.



Gate

Gate with snap lock. 100 cm center-center standard dimensions. Narrower or wider gates are available on request. As standard with abutment against posts/studs or wall. 15 cm tube spacing 2" upper / lower tubes, 3/4" vertical tubes.



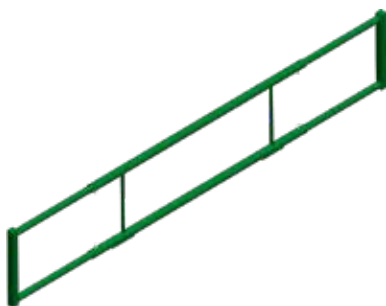
One-way gate

Easy control of one-way cattle movements. Permits only one-way access. Telescopic.



Pendulum bar

With counterweight and snap lock. For post-and wall-mounting. Adjustable length, from 230 to 370 cm. Made of 1½" and 2" tubes.



Duplex tube telescopic partition

High flexibility with telescopic partition. Comes in lengths from 135-185 cm or 340-480 cm. Made of 1½" and 2" tubes.



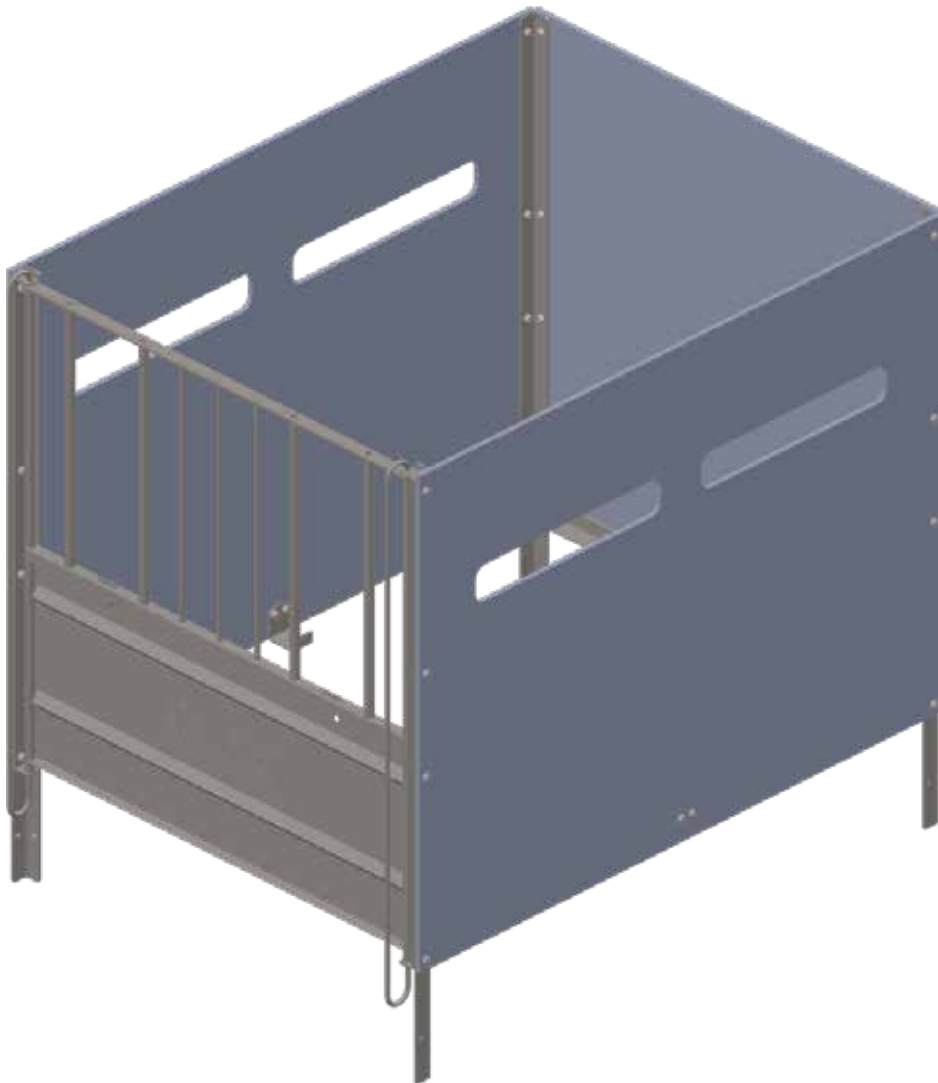
Lift / lower partition

Widths from 135 cm to 480 cm. 300 cm uprights for set in concrete, bolted connection, or for wall mounting are required. Recommended ceiling height at least 370 cm, absolute lowest ceiling height 330 cm.



Mette Calf Pen

Developed in collaboration with local farmers. Affordable, functional calf pen. Easy to keep clean. Can be mounted in a row, in a battery or against a wall. The walls consist of solid and moisture-resistant 15 mm plywood boards. Available with drinking bowl, feeding rack and bucket holder.





Gullros feeder panel for tie stalls

Gives the animals free movement and natural behavior. The opening can be adjusted according to the animal size. Easy to assemble, and easy to adapt to existing buildings.



Gullros headlock for tie stalls

Gives the animals free movement and natural behavior when the headlock is open. The opening can be adjusted according to the animal size. Easy to assemble, and easy to adapt to existing buildings.



Tina feeder panel, for tie stalls

Tina is Reime's most affordable stall for cows and heifers. Gives the animals free movement and natural behavior. Easy fitting. Can be delivered with top-mounted water supply pipe. Fully welded with fixed front loops.



Stall partition for tie stalls

Available with or without studs and set in concrete or bolted connection. Available with studs. Partition and mounting plate welded together for high sturdiness. Fits all types of Feeder Panels in a tie stall.



Stall partition for tie stalls

A somewhat simpler and cheaper alternative to the partition above. For set in concrete or bolted connection. Fits all types of feeder panels in a tie stall.



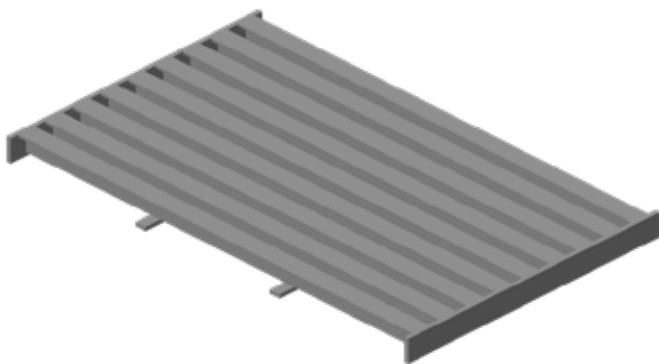
End-partition for tie stalls

Partition with extra tubes to separate the walkway area at the end of the rows. For set in concrete or bolted connection. Fits all types of feeder panels in a tie stall.



Square tube grate

Special profile on the edges gives stable support along the concrete edge. 16 mm square tubes welded to solid crossbeams made by 8x50 flat steel. Galvanized construction. Comes in standard sizes 75/85 cm x 120 cm, or 75/85 cm x 240 cm. Special sizes on request.



Manure grate made by T-beams

Comfortable and easy to keep clean. 50x50 mm T-beams on 60x12 mm crossbeams. Galvanized construction. Available in standard sizes 85, 105, 125 or 145 x 120 cm. On request special sizes.



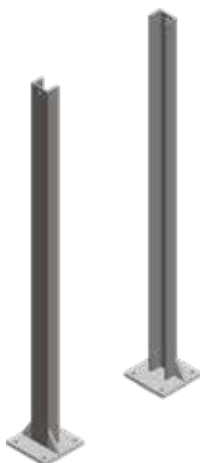
Posts for setting in concrete

50x50 mm for calves, 70x70 mm for young cows and heifers. 150, 180 or 300 cm height (standard). Available with post extension for ceiling. Galvanized. As an option powder coated, or in stainless steel.



Posts for bolted connection

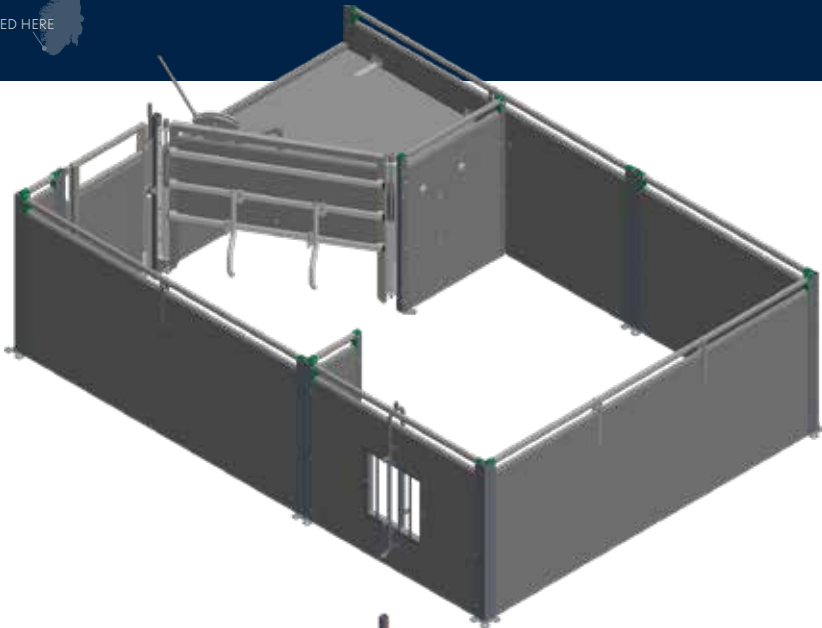
50x50 mm for calves, 70x70 mm for young cows and heifers. 150 or 300 cm height (standard). Available with post extension. Directly mounted into a concrete floor with expansion screws. To slatted floor with a special bracket.



RSC Tapered Channel (C-beam)

For wooden partitions. Bolted connection or set in concrete. Delivered in pairs.

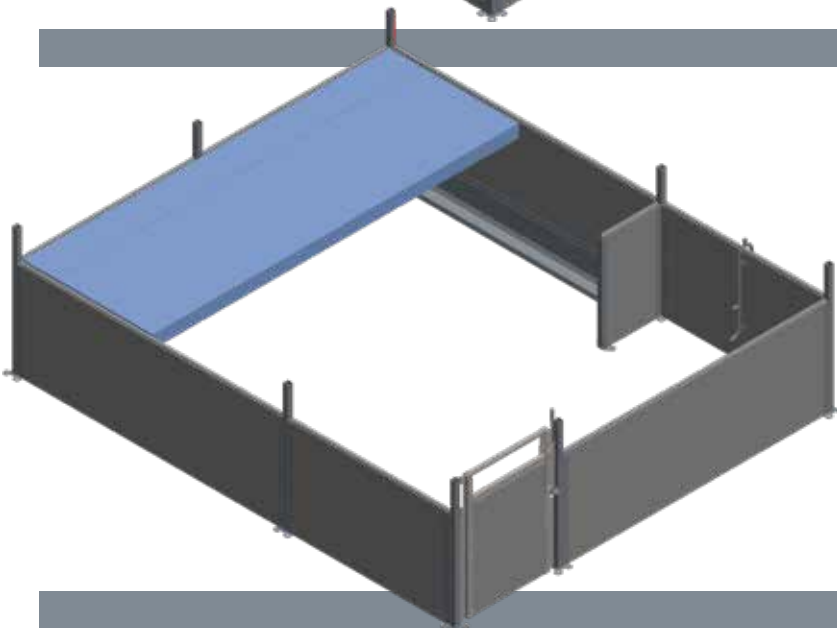




Farrowing pens

The pen can be adapted to most floor plans. Sizes and variants are custom made to suit the individual needs of our customers.

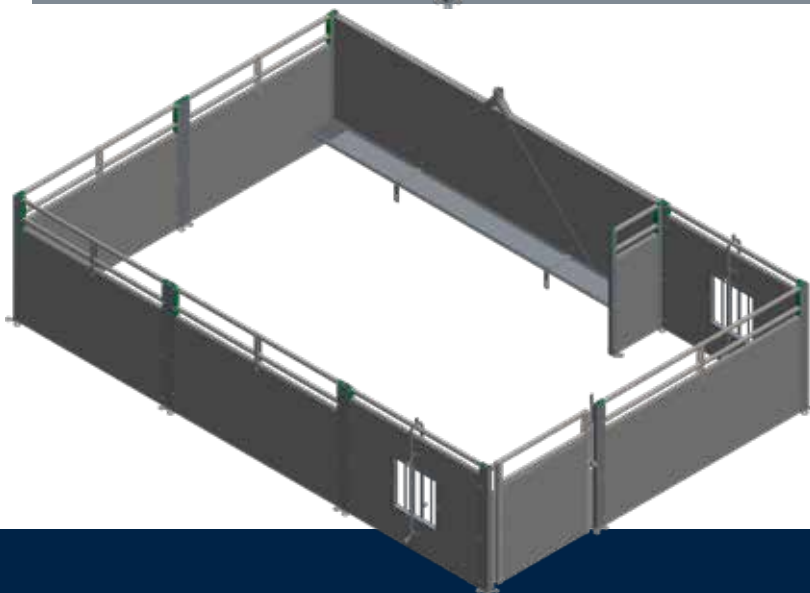
Type of feeding (crib type) and location of this, as well as whether the piglet should return to the pens after weaning.



Piglet bin with roof.

For housing piglets after farrowing pen, but before housing in hog pens.

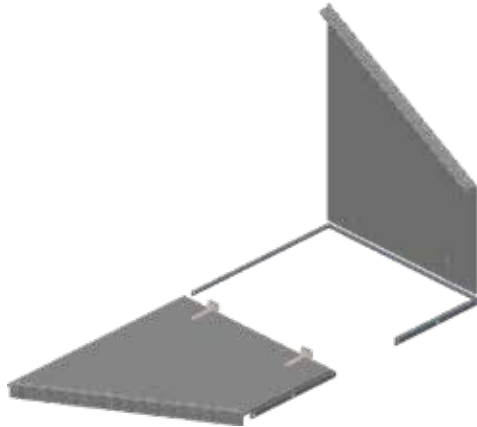
Adapted to dry or wet feeding, and whether the pen is mounted against the walkway or the wall. Piglet bins with roof can be delivered in several sizes.



Hog pens.

The pen can be adapted to most floor plans and whether the pen is mounted against the walkway or the wall.

Manure grate / slits can be mounted against both the outer wall or the walkway.



Roof for piglet pen

Available for large or small piglet corners.
(0.75 m² and 1.15 m²)

Available with and without holes for heat lamps.
Various mounting depending on pen version.



Partition for piglet corner

With 2 protection rails Convenient access for closing and opening from the walkway. To expand the bin after weaning: Open the roof and fold the partition into the piglet corner.



Divider plate for piglet corner

To achieve higher temperature in the piglet corners for newborn and sick piglets: Lower the partition, turn the divider plate upside down and you'll get 2 closed rooms. This gives a good overview over the piglets.

Can be adapted to both large and small piglet corners.
Held in place with slide rails.



Divider panel with screen

For contact between farrowing pens
Increases the activity on the manure grate.
(Less manure on the floor). Drinking nipple
valves can be mounted at the divider.
Screens can be mounted in all common
divider panels, regardless of length.



Rails for farrowing pens

Delivered in several versions and lengths.
Also available for internal mounting on
the door. Attached to the end profile on
partition or wall, preferably directly opposite
to the hoop in the neighboring pen.

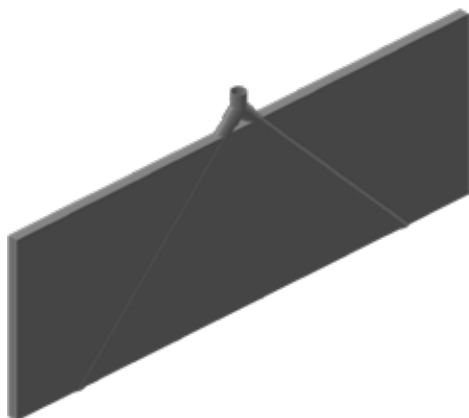
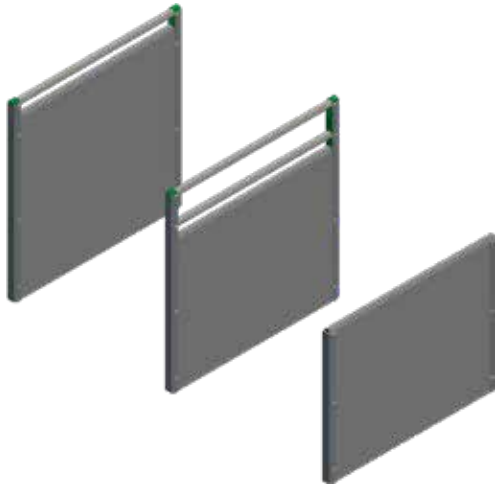


Plate for wet feeding systems

With integrated pipes for wet feeding
Lengths up to 6 m. mounted between
hog pens with trough. Thus, there are no
attachments or sharp edges to injure the pig
when feeding. Also facilitates cleaning.



Pen dividers

Made of 35 mm thick planks, PVC-sealing and stainless end profile elements. All components facing the floor are either made of plastic or stainless steel. The elements can be connected with anchor bolts or set in concrete adapted to the floor slope.

Height 75, 100 or 113 cm. Length up to 300 cm. 3 versions, with 0, 1 or 2 tubes on top. Galvanized tubes, as an option powder coated. The pen dividers are supplied with end profiles for bolted connection to posts, to floors, or for setting in concrete



RF posts

Stainless steel posts at the end of or between partitions. The posts are 40 mm high. Can be set in concrete, screwed on or fastened with slot fasteners over the grate / slot.

Separate uprights with hinges and stoppers for gates



GP posts

For larger animals and sows / boar.

The 50 mm uprights are more solid than 40 mm uprights.

Available for bolted connection, set in concrete and with brackets for slatted floor.



Gate with snap lock

Attached to the wall or between two posts.
GP gates have heights from 60 - 160 cm.
Attached to the wall or between two posts.

Lengths 60-120 cm.

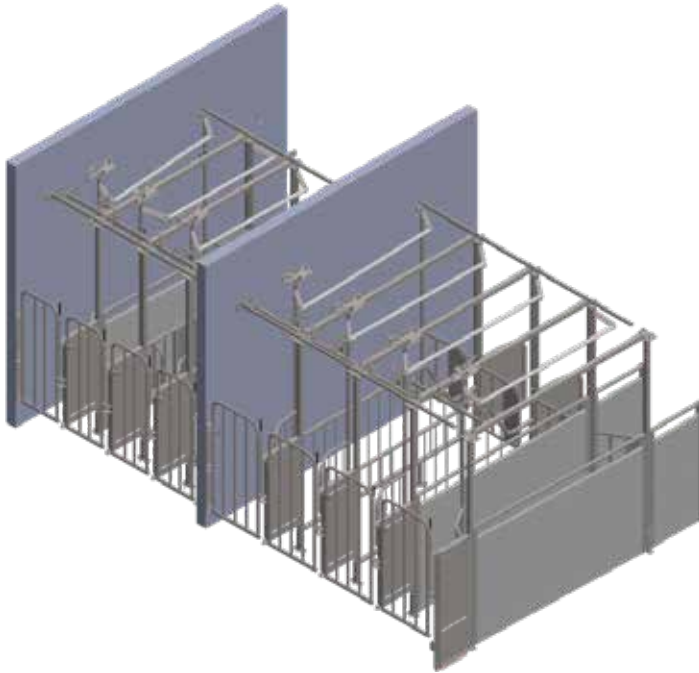


Hinges and stoppers

Hinges and stoppers can be mounted on partitions or walls.

Wall mounts for partition against wall or other partition.

Corner fittings for mounting partitions in corners without posts. Set in concrete.

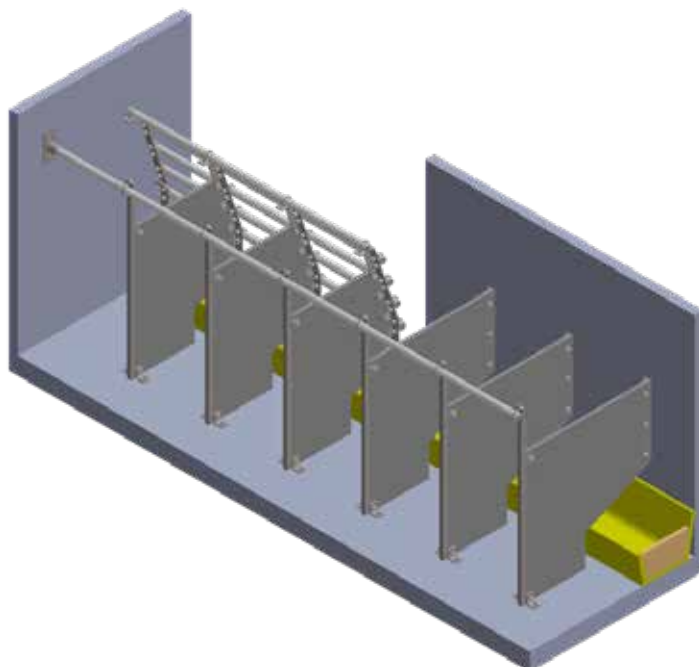


Artificial Insemination Stall

For sows before insemination. It's designed for a good working environment for breeders / veterinarians, and to provide a sheltered environment for the sows during and after insemination.

Can be mounted against a wall or walkway. Independent front gate (over the trough). The sow is locked inside the stall. With a handle you can choose to lock or open for limited movement. The gate system prevents the sow from being disturbed by other pigs.

At 70 cm width, the stall can be included in the total lying area



Short feeding partition

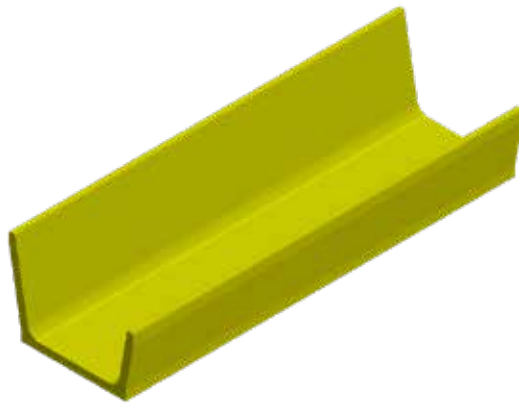
For young sows or sows after insemination. Ensures a calm environment when feeding. Can be mounted against a wall or with the tubes against the walkway.



Stainless steel troughs

Delivered as single troughs or long troughs divided with e.g. wet feeding partition between 2 pens.

Delivered in several lengths. Mounted against wall / partition.



Polysan troughs

Comes in many versions and sizes. Can be put together in a row and divided with partitions on request. Set in concrete / glued to the floor.



Drinking nipple valves

Available in several versions, depending on the pen type and whether it is mounted between pens or individually. Can be mounted on screens, partitions (open type "corral panels") or partition plates. Must be supplied with a mounting kit for mounting on corral panels. Comes with or without drinking nipple valves.





Feed Through Gates

A classic "pulpit" Feeder Panel
Fixed Feed Through Gate with 40 cm spacing.
Available with gate.

Available in standard lengths from 120 to 400 cm. Special sizes on request.



Headlock

Fixed Feed Through Gate with the possibility of
individual headlocks.

40 cm spacing, on request with 33 cm spacing for goats.
Available in standard lengths from 120 to 400 cm. Special sizes on request.
Special sizes on request.



Horizontal Feeder Panel without locking device

A flexible option.

Available in standard lengths from 120 to 240 cm. Special sizes on request.



Horizontal Feeder Panel with locking device

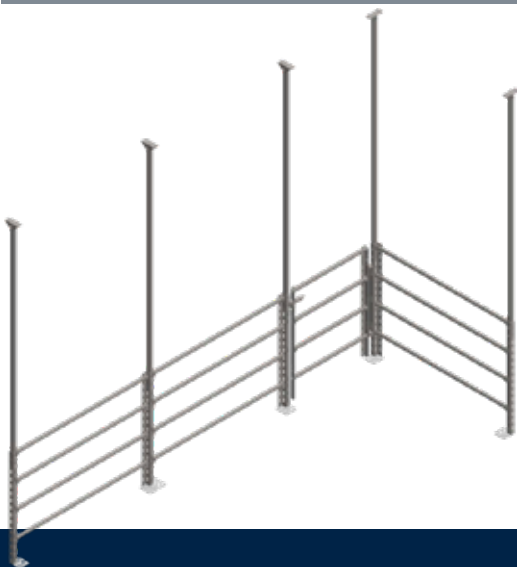
Same standard lengths as Horizontal Feeder Panel. For feeding without waste of forage: Lift the gate up. To lock lambs inside the stall: Lower the gate.



Tulla flex Feeder Panels

Adjustable longitudinal feeding opening.

Can be closed and used as an ordinary divider panel, or kept open against the feed table e.g. during lambing. Modular, with several integrated fasteners / functions. Mounted in concrete edge / feed table with expansion screws.



Tulla traditional hybrid stall

Simple, flexible, affordable, and strong stall intended for mounting on floors or gratings with or without raised feeding boards / walkways.

Delivered "flat-packed". Easy installation. Can be combined with other stall items. Perfect in large lambing pens, where you want to use a walkway as a feeding table and divide the lamb fences towards it.



Standard Corral Panel

Produced at Jæren from Swedish high-quality steel. A short and extremely solid construction. Lightweight, easy to carry.

Height = 105 cm. 6 pcs. Horizontal oval tubes.



Heavy Duty Corral Panel

Produced at Jæren from Swedish high-quality steel. A short and extremely solid construction. Lightweight, easy to carry. The posts and eyelets have a very durable, welded construction to withstand high stress.

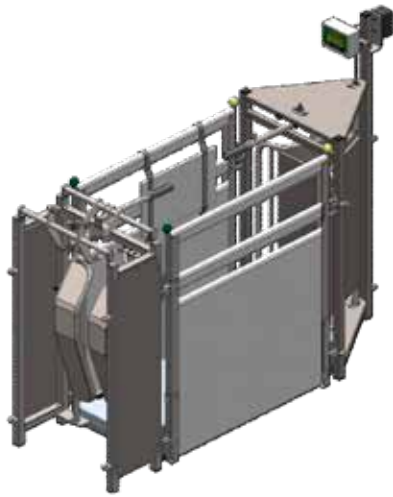
Height = 110 cm. 7 pcs. Horizontal oval tubes.



Plastic partition with integrated locking pin

Simple and practical partitions to be connected to each other locking pins. Can be used as a partition in sheep barns, as well as outdoor fencing.

Comes in standard lengths 150, 200 and 250 cm, and with 1 or 2 locking pins.



Sheep feed station for feeding concentrates

Provides better utilization of concentrates with electronic individual feeding system. Easy, accurate feeding with PC software. Less stress: The sheep don't associate the farmer with "feeding time".

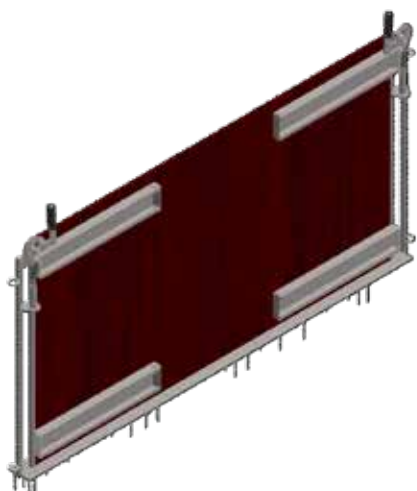
Capacity: 50-70 sheep per station.



Feed Through Gate

Efficient feeding with little feed waste. The sheep push the front forward as the feed level decreases. 4-8 sheep can be fed at the same time per meter.

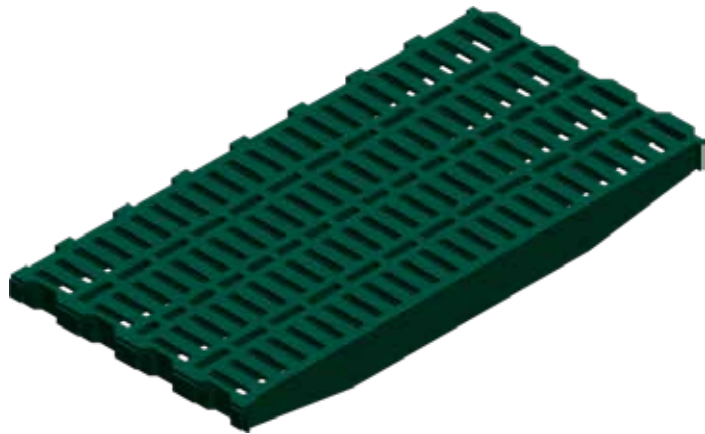
Produced in galvanized steel and plywood. Lengths 2, 3 and 4 meters. Can be connected. 130 or 150 cm wide.



Panels for feed box

Plywood end wall with rails to move the Feed Through Gate inwards as the sheep push to get the feed.

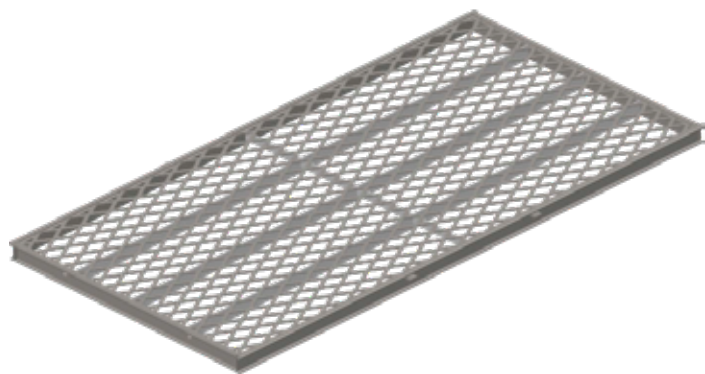
Comes with a gate for filling from the end, or with a hatch to allow the breeder to walk-through.



Tulla Plastic Manure grate, 80x40

Non-slip, stable manure grate for sheep and pigs. Effective manure drop-through, slot spacing 14 mm. Easy installation with "tongue and groove", easy to clean.

Can be combined with our 80x80 or 80x120 expanded steel mesh manure grates.



Expanded steel mesh manure grates

Unique construction - the grate is not welded to the frame. Easy to replace individual grates (if needed). Crossbeams as well as braces provides a very sturdy construction.

Plate thickness 4 mm, height 60 mm.
Lengths 200, 240, 280 or 320 cm
Width 100 cm. On request special sizes.



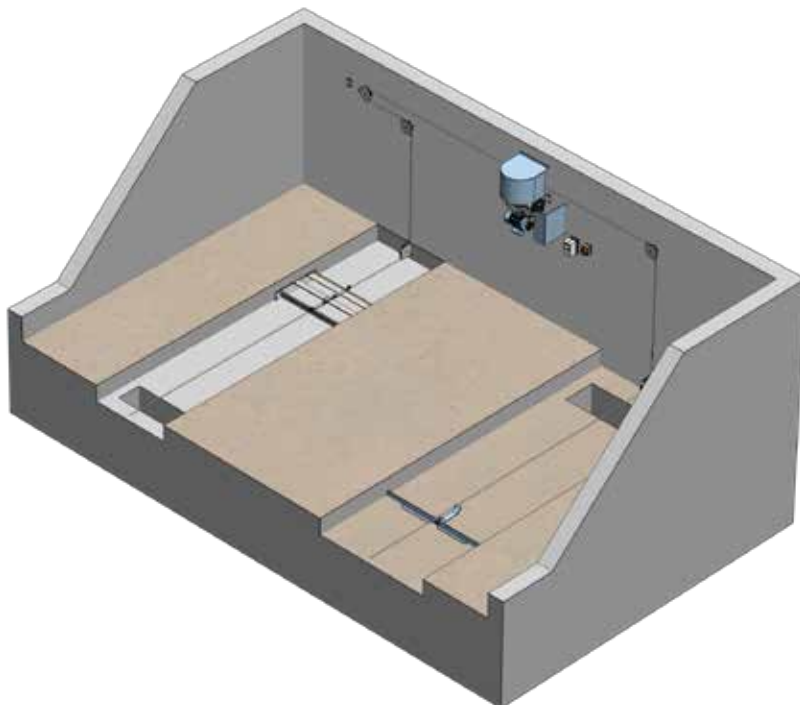
Hydraulic Manure Scraper

Reliable and labor-saving scraping system, for use under gratings and slits.

Can be used up to 50 meters scraper length. Stroke length 200 or 300 cm. Adaptable - heavy straight or V scrapers, can be mounted in gutters with widths from 50 to 245 cm - in new as well as in old barns.

Standard with hydraulic unit, 4 kW or 5.5 kW. 220V or 380V wiring. Each hydraulic unit can power 9 pcs. 200 cm hydraulic cylinders, or 6 pcs. 300 cm hydraulic cylinders.

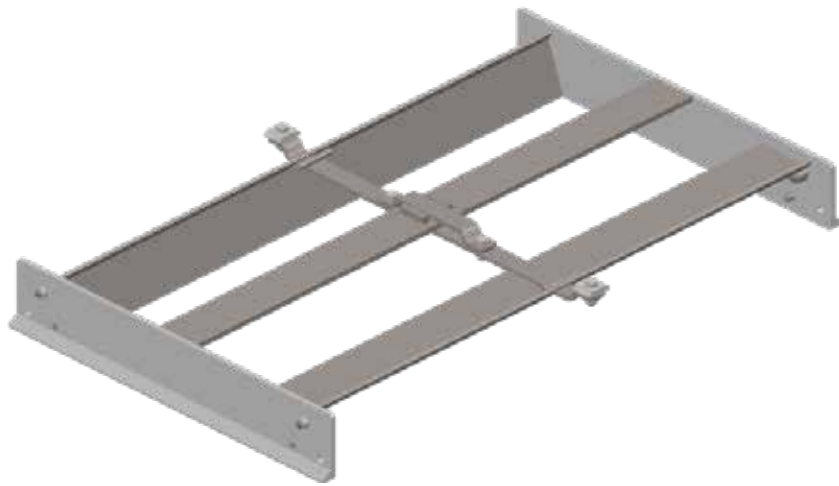
The scraper arms are produced in galvanized steel and mounted on a hinge pin made of high-quality special steel. The galvanized steel blade is adjustable.



Reime Aarhus Manure cleaning systems

Designed for efficient manure handling.

An affordable alternative to hydraulic manure scraper. Easy to maintain. For efficient handling of Manure. All parts in stainless steel. Wire pulley made of maintenance-free nylon. Drum drive - no wire wear. For wall or ceiling mounting. Comes with "Deltaskrape" ("heavy straight"), or "Fjøsreinskrape" (V-scraper).



Fjøsreinskrape ("heavy straight")

Manure scraper with "manure bucket". Solid frame for heavy loads. As an option end scraper to collect manure close to the wall. Made of stainless steel.



Deltaskrape (V-scraper)

Manure scraper with hinged scraper arms. The arms fold against the scraper head when the scraper is pulled back. As an option end scraper to collect manure close to the wall. Made of stainless steel.



50 YEARS OF QUALITY

Reime Silage Distributor

Probably the most reliable silage distributor on the market!

This year we are celebrating its 50th anniversary by bringing it to light again, to give it the honor it deserves!

Reime Silage Distributor is an effective, solid, and time-saving machine. It takes care of the heaviest work in the feeding process and handles both fresh grass as well as silage and sodium hydroxide treated straw.

The troughs are made of maintenance-free stainless steel, so it is easy to clean. It's also easy to clean.

It has now been upgraded with state-of-the-art control systems, where you can choose from the basic to a fully automatic Silage Distributor. It's possible to mix and control 3 different ingredients. The barn is divided into groups or stalls, and the recipe can be changed completely for each stall / group. Reime Silage Distributor can work in conjunction with forage unloading wagons, balers, feed mixers and similar systems.

It can also be delivered with side discharge to feed directly in front of the cows, and the opportunity to feed with different mixtures to each side of the feed table. The main structure is the same - why change a success that still is in daily operation after 50 years?

The updated Reime Silage Distributor is an investment for the future - for the next 50 years...



