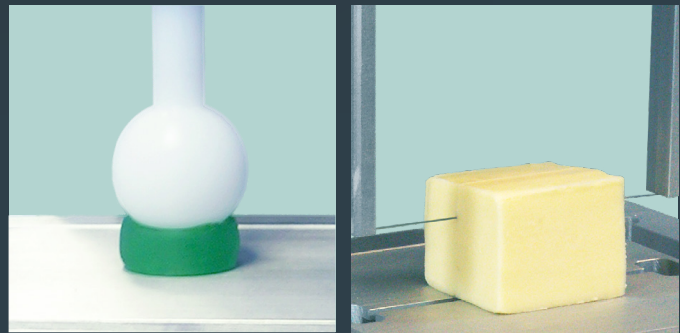




TMS-Pilot

Texture Analyser

Touch Screen Controlled Systems
for the Food Industry



www.spectronic-camspec.co.uk

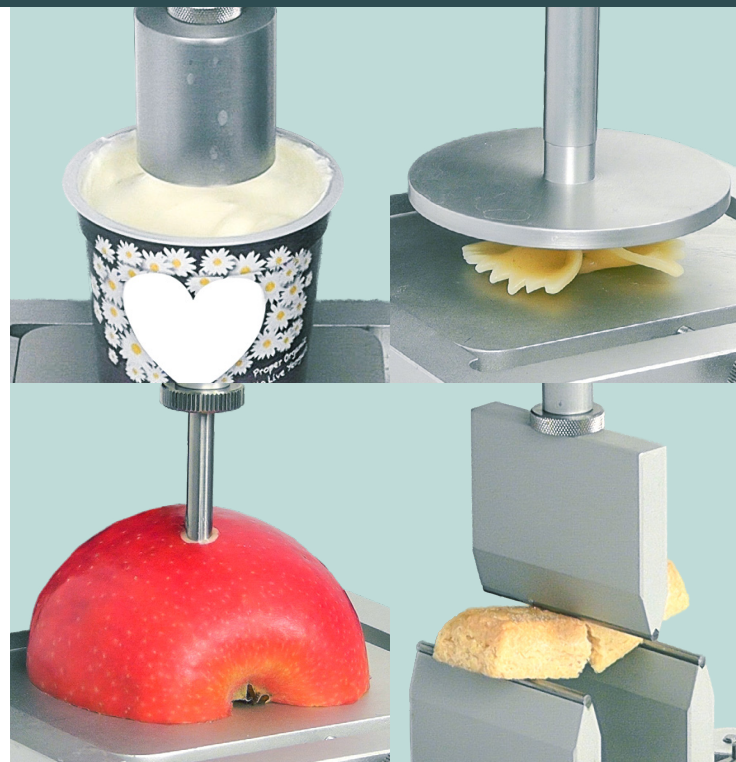
TMS-Pilot Texture Analyser

Flexible and Affordable Touch Screen Texture Analyser

Designed specifically for quick and easy texture assessments, the TMS-Pilot provides an affordable solution for texture analysis up to 500 N. Compact, rugged and portable, the motorised TMS-Pilot texture analyser ensures reliable and repeatable test results. Use the TMS-Pilot to quickly determine the textural properties of bakery products, cereals, confectionery, snacks, dairy products, fruit and vegetables, as well as non-food products such as cosmetics, pharmaceuticals and many more...

Operated via an intuitive touch screen interface, the TMS-Pilot requires minimum operator training. Tests are performed at the touch of an icon to instantly determine consistent standards within the raw or finished product, saving time and money, and programs can be saved as 'favourites' on the main screen for instant recall.

The TMS-Pilot is supplied as standard with TL-Touch texture analysis software, a standard Fixture Table and T-Slot Mounting Base to accommodate and align a range of fixtures plus TMS Extension Piece Set. Just choose from a range of 'Plug and Play' loadcells (sold separately) and start to test your products.



Key Features

Robust bench-top machine

- portable and easy to move around

Easy-to-use with minimal training

- one touch to start test

Clear digital 11" LCD touch screen display

- clearly shows test results and graph

Integrated bellows

- protect against ingress

Extensive range of probes & fixtures

- flexible and versatile

'Plug and Play' loadcells

- quick and easy to interchange

Password protected login

- identifies operator for full traceability

Storage of test methods as 'Favourites'

- minimises set-up time

Customised test reports

- tailor reports of results to your needs

Some of our customers

Bob Evans
FARMS®

BYRNE
DAIRY
Since 1933



StarKist

M MIAMI
UNIVERSITY



mizkan™
Bringing Flavor to Life™

Bonduelle

Weston

greencore
group



TMS-Pilot

Technical Overview

Easy-to-use LCD touch screen display

Tension and compression testing

8 interchangeable intelligent loadcells from 2 to 500 N

Choice of more than 200 test probes and fixtures. Includes a standard Fixture Table, T-Slot Mounting Base and TMS Extension Piece Set as standard.



Upgrade Path

Protect your investment - if your requirements change upgrade to enable the Advanced Program Builder mode. This gives you the full programming functionality of FTC's premium range TL-Pro software.

System Specification

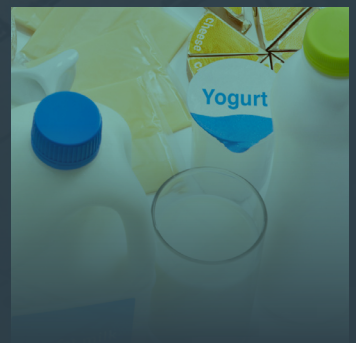
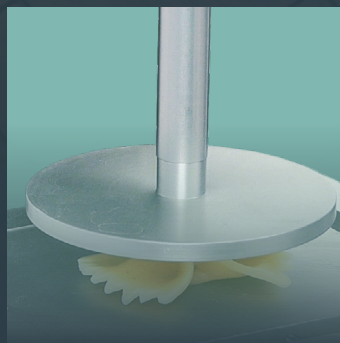
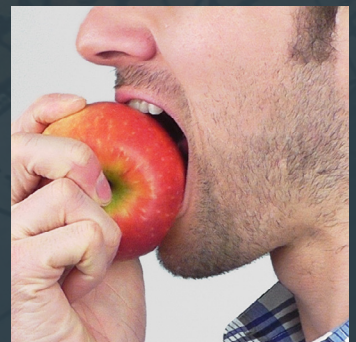
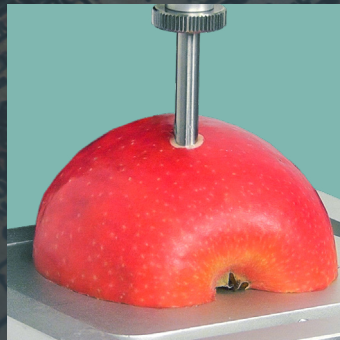
LOAD	
Maximum Load Rating in tension or compression	500 N (110 lbf)
Load Accuracy	±0.1% of full scale for loadcells from 2 – 500 N
Loadcells	Intelligent digital loadcells, changeable by the user in seconds
Loadcell Capacities Available	2, 5, 10, 25, 50, 100, 250, 500 N (0.45 – 112 lbf)
SPEED	
Speed Range	1 – 500 mm/min (0.04 – 19.5 in/min)
Speed Accuracy	± 0.1% of set speed
Speed Resolution	1 mm/min (0.04 in/min)
DISPLACEMENT	
Displacement Accuracy	±0.13 mm
Displacement Resolution	0.01 mm (0.0004")
Maximum Travel	300 mm (12")
DIMENSIONS	
Data Acquisition Rate	Selectable from 1000, 500, 100, 50, 10 Hz
Data Sampling Rate	16 kHz
Power Supply	110V/230V ac, 60/50 Hz
Weight	19.2 kg (42.3 lbs)
Operating Temperature	10°C – 35°C (50°F – 95°F)
Humidity Range	Normal industry and laboratory conditions, non-condensing

Food Technology Corporation reserves the right to alter equipment specifications without prior notice. E&OE

Food Technology Corporation

a world leader in affordable texture analysis solutions

Founded in 1966, Food Technology Corporation is the industry's longest standing provider of quality texture measurement systems. With over 50 years' experience evolving from the ground breaking Kramer Shear press, our company is able to provide systems for field, factory and laboratory test environments. Our extensive experience in practical food texture measurements, combined with our cost effective solutions makes us the ideal partner for your texture instrumentation needs.



Spectronic CamSpec Ltd UK/EU Office

Tudor House, Barley Hill Road, Garforth,
Leeds, West Yorkshire, United Kingdom,
LS25 1DX

t: +44 0113 286 4536

e: sales@spectronic.co.uk

Spectronic CamSpec Ltd reserves the right to alter equipment specifications without prior notice. E&OE

www.spectronic-camspec.co.uk

431-933-05