

[parkrealtygroup.co.uk](http://parkrealtygroup.co.uk)

# Park Homes & Luxury Lodges

Total Park Solutions Provider



# Index



Park Realty Group Homes .....	4-13
Victory Leisure Homes .....	14-27
Digital Services by Orb 3D .....	28-29
Box Leisure Products .....	30-34



# Introduction

---

Welcome to **Park Realty Group**, manufacturers of park and leisure homes. All our homes are constructed to **British Standards 3632** and every home we manufacture comes with **Platinum Seal Warranty**.

Park Realty Group provides a wide range of homes and we are always delighted to work with new clients offering our **Bespoke Design Services**.

We are delighted to announce our new partnership with **Victory Leisure Homes**.

Our Box Leisure range offers a unique selection of accommodation and leisure buildings designed for the camping and caravan sector and in addition private landowners for more information please see **Boxleisure.com**.

**Total Park Solutions** are offered by **Park Realty Group**. We operate our own siting teams, digital services, sales & marketing services and transportation through our network of trusted partners.

We hope you enjoy looking at the beautiful homes displayed in our brochure.





Bespoke Lodge

# The Noble Super Lodge

---





52ft x 22ft / 55ft x 22ft / 65ft x 22ft

## The Noble Super Lodge



2-4 Bedroom

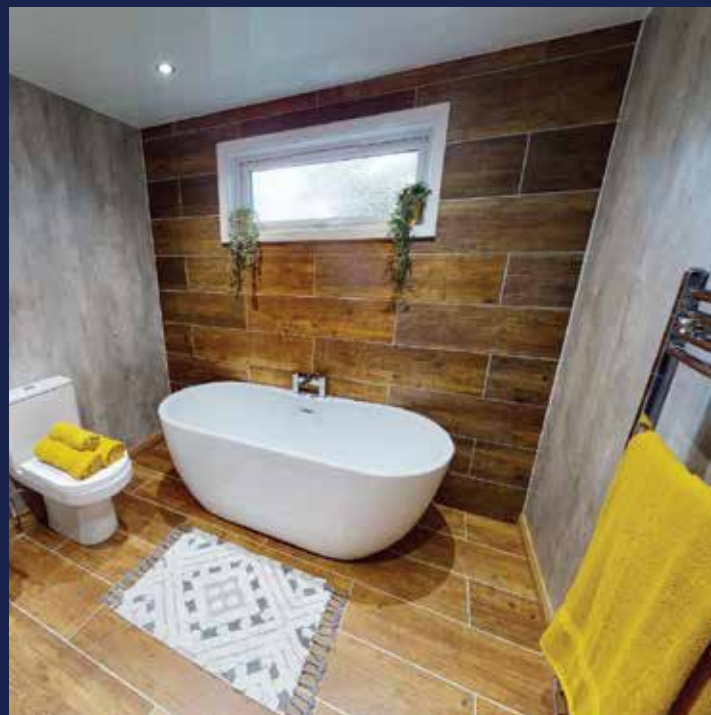


2-3 Bathroom

Panoramic viewing windows, high vaulted ceilings, luxurious finishes and furnishing throughout.

The lodge can be made up to 65ft x 22ft and can have up to 4 bedroom suites.

We offer several standard finishing choices and furniture packages. We also work with our clients to provide completely bespoke choices.



Bespoke Lodge

# The Foxglove

---





45ft x 14ft / 45ft x 20ft / 55ft x 22ft

## The Foxglove



2-3 Bedrooms



2 Bathrooms

The Foxglove Lodge is bright and airy with supersize windows and light marble flooring. The model displayed offers a contemporary design which includes a feature fireplace and optional underfloor heating.

We offer a range of bathroom & kitchen designs with various floor covering options for all our homes.



Bespoke Lodge

# The Elm

---





36ft x 18ft / 40ft x 20ft / 60ft x 22ft

## The Elm



2-3 Bedrooms



2-3 Bathrooms

Cool blue, creams and greys feature in the colour scheme. Underfloor heating in the bathrooms come as standard. The large contemporary kitchen offers a vast amount of storage and there is a separate utility room offering a sink and washing machine.

Take a virtual tour of this home on our website



Bespoke Lodge

# The Willow

---





36ft x 18ft / 40ft x 20ft / 58ft x 22ft

## The Willow



2-3 Bedrooms



2 Bathrooms

A fantastic lodge with extra large bedrooms and a large open-plan living/dining/kitchen area. The Willow has a warm and cosy feel with its cream, grey and gold colour scheme running throughout.

The kitchen is equipped with eye level double oven, microwave, integrated fridge-freezer and dishwasher. There is a free standing washing machine in the utility room.





65ft x 22ft

## Crystal Super Lodge



2-3 Bedrooms



2 Bathrooms

This stunning Cotswolds design provides an integrated cantilever front deck of 20ft x 22ft. The first 12ft section has a covered roof with Velux windows and stunning frameless glass which creates a beautiful conservatory.

In the summer months, all the frameless glass completely opens to make a stunning outside space for dining and relaxing.





40ft x 20ft / 45ft x 20ft / 50ft x 20ft

## The Oak



2-3 Bedrooms



2 Bathrooms

The lounge features a fireplace with a choice of style/design. The generous master bedroom features a walk-through dressing room and en-suite shower room.

There are 2 further double bedrooms and a second large bathroom featuring a bath and separate shower. All of our lodges are fully fitted and we can offer a choice of colour scheme and furnishing packs. Available in any exterior finish.



Bespoke Lodge

# The Franklin

---





40ft x 20ft

# The Franklin



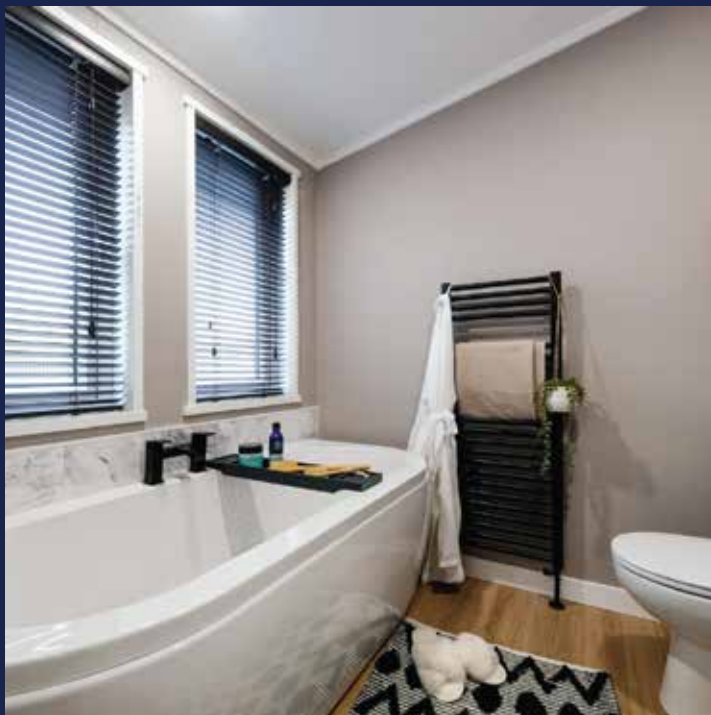
2 Bedrooms



2 Bathrooms

The Franklin has everything you want from a lodge and more. Inspired by the sunset tones of Morocco and earthy, natural textures – there's a lot to love about this contemporary lodge.

If you like a room with a view, you'll love the clever use of windows throughout, including the unique bi-fold window to the dining area which offers uncompromising views from every angle – and an inside-outside alfresco option when entertaining.



Bespoke Lodge

# The Parkview

---





37ft x 20ft / 40ft x 20ft / 42ft x 20ft / 46ft x 20ft

## The Parkview



2-4 Bedrooms



2 Bathrooms

Step inside our Parkview Lodge to find a space designed just for you. It has everything you could ever need - and everything you didn't know you needed. Inspired by a modern farmhouse, the Parkview boasts contemporary design features like marble-style worktops, herringbone flooring and statement feature walls.

So, whether you're looking to take a break with family and friends or enjoy some blissful alone time, the Parkview is the lodge for you.



Bespoke Lodge

# The Faraday

---





30ft x 20ft / 40ft x 20ft / 42ft x 20ft / 46ft x 20ft

## The Faraday



2-3 Bedrooms



2 Bathrooms

The perfect starter lodge with an expensive feel, the Faraday is the epitome of hygge (pronounced hu-gue) - which is Danish for 'mood of cosiness and comfort and feelings of wellness and contentment'. Throughout, you'll see hints of black accents to give the home a boutique, modern feel.





AIRCRAFT VIDEOGRAPHY



REAL ESTATE PHOTOGRAPHY



HOLIDAY PARK DRONE SERVICES



020 3290 5555

george@orb3d.co.uk



## Get professional visual services from our experts today!

Orb3D is a specialised Park Realty Group company, specialising in Digital Marketing Services.

We take on a modern & innovative approach to digital marketing giving our clients the best service possible. With competitive rates and fast turnaround times you can feel comfortable knowing you're in good hands.



*George Dove*  
CREATIVE DIRECTOR



VISIT WEBSITE  
[www.orb3d.co.uk](http://www.orb3d.co.uk)



Photo & Video



3D CGI Drawings



Drone Services



Web Development



Virtual Tours



Search Engine Optimisation

Bespoke Lodge

# The Lakewood





42ft x 13ft / 43ft x 14ft

## The Lakewood



2-3 Bedrooms



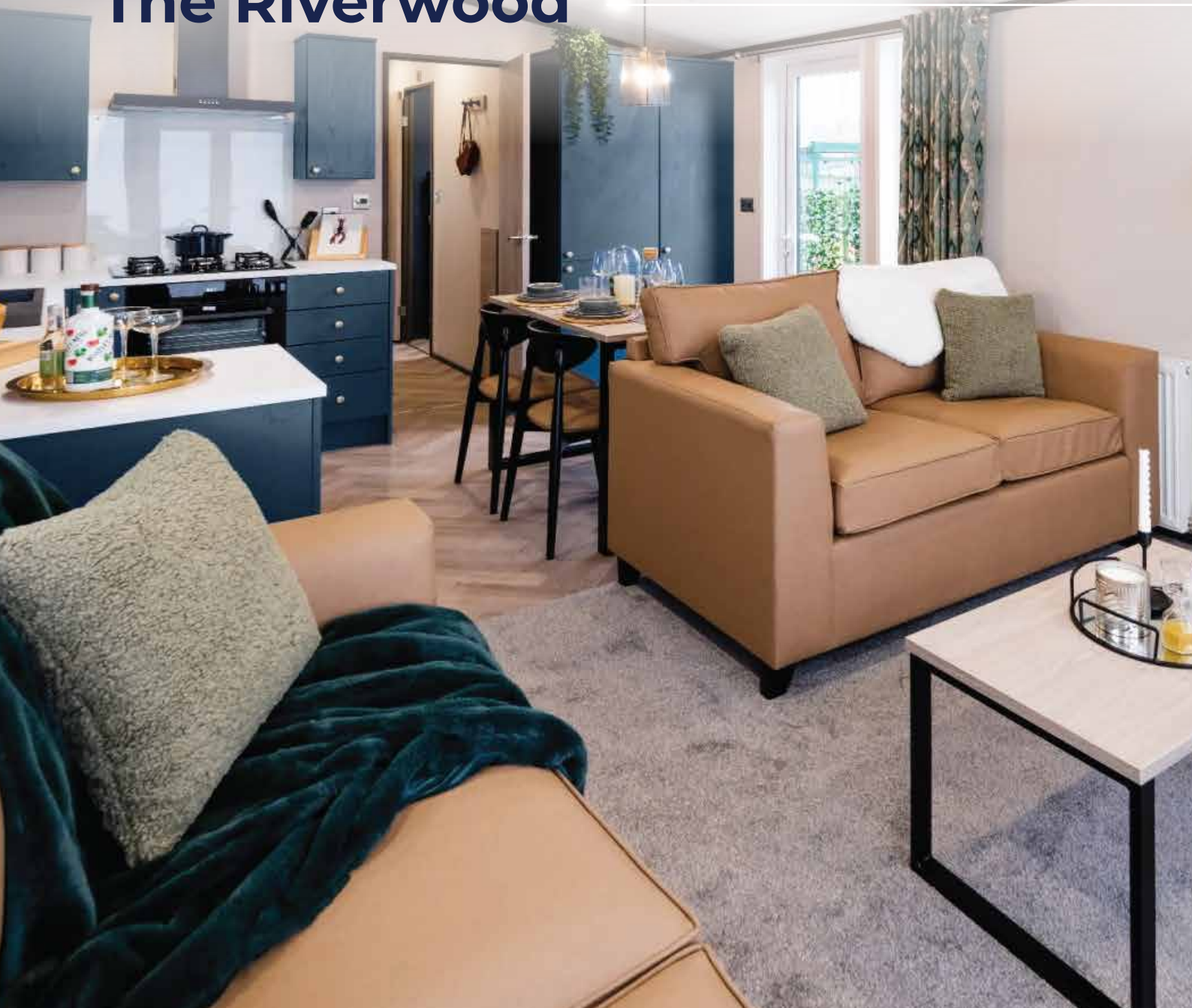
2 Bathrooms

The Lakewood is designed to bring family and friends together with a modern open-plan design and front aspect French doors and windows. The kitchen boasts a contemporary handleless finish, integrated appliances and a large dining space to make meal times a pleasure. There's room for all with an en-suite in the statement master bedroom plus a second bedroom and bathroom. Unpack your bags, relax and unwind. Let Lakewood help you create holiday memories to treasure.



Bespoke Lodge

# The Riverwood





40ft x 13ft / 41ft x 13ft

## The Riverwood



2-3 Bedrooms



2 Bathrooms

The Riverwood boasts a Moroccan-inspired design with statement fabrics, sleek black accessories, pendant lighting and gold accent handles throughout. The master bedroom features a dressing area and en-suite so you can get ready in style.

The bright and light open-plan lounge is enhanced by the deep blue colour scheme of the kitchen and the warm neutral colours across the dining and living furniture.



29ft x 12ft / 36ft x 12ft / 39ft x 12ft / 41ft x 12ft

## The Stonewood

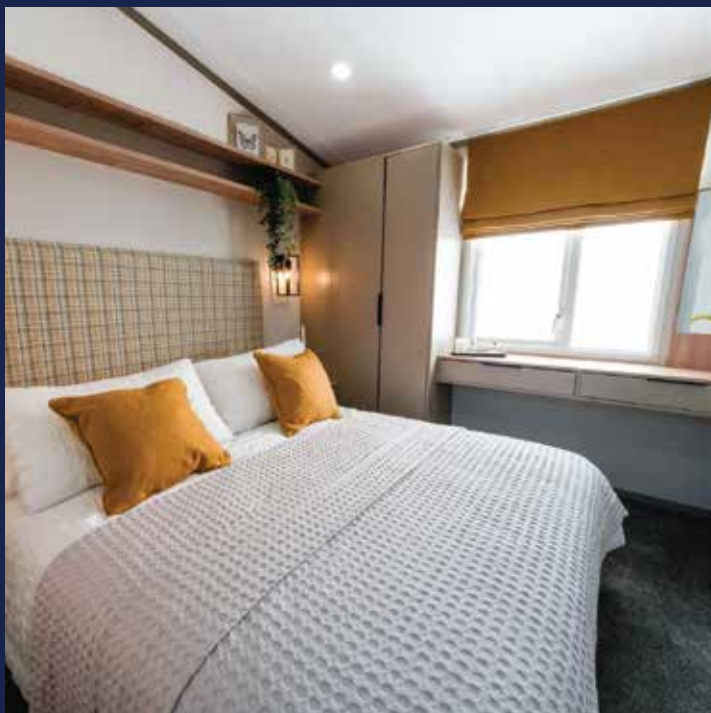


2-3 Bedrooms



1-2 Bathrooms

Comfortable, calming and cosy, the Stonewood is an affordable option for families who want a holiday to remember without compromising on quality. With a large living space, you and your guests can enjoy a night gazing at the sunset through the large doors or a fun-filled day of games in the spacious lounge.





40ft x 12ft

41ft x 12ft

## The Bower

 2-3 Bedrooms

 1-2 Bathrooms

The Bower has been designed with families in mind and has all the room you need to make treasured memories that will last a lifetime.

The modern, on-trend design has been created so you can add your own finishing touches and it's also easy to clean, so you don't need to worry about sandy feet (or paws) or sticky fingers. You'll be spoilt for storage throughout and there's plenty of space to cook the finest family meals.



38ft x 12ft / 41ft x 12ft

## The Lochwood

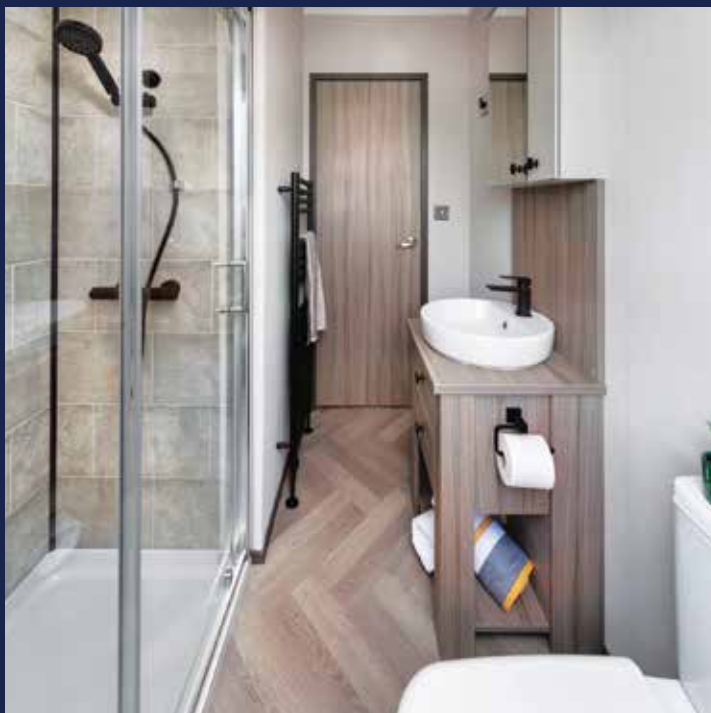


2-3 Bedrooms



2 Bathrooms

Designed for families who are looking for a contemporary yet functional space, it's perfect for hosting and relaxing. It's packed full of features - such as the L-shaped sofa which is great for movie nights, and a master bedroom that's a perfect escape from the everyday.







28ft x 12ft

32ft x 12ft

39ft x 12ft

## The Baywood



2-3 Bedrooms



2 Bathrooms

A 9ft ceiling height ensures the impressive Hartland Lodge's sense of luxury is evident throughout. It's sure to impress as soon as you step inside, not only with the high attention to detail but also how spacious the Hartland Lodge really is.

A large open-plan kitchen is at the heart of the Hartland Lodge, perfect for entertaining family and friends.





# BOXLEISURE<sup>®</sup>

[www.boxleisure.com](http://www.boxleisure.com)

- Golf Simulator
- Casita
- Mobile Motel
- Casa Duo
- Luxury Facilities Suite
- Home Spa
- Groom Room
- Grand Spa
- Office Suite
- Silent Disco / Karaoke
- Gym/Yoga Studio
- Cinebox (Cinema/VR)



# Mobile Motel

33ft x 14ft

65ft x 14ft



# Golf Simulator

27ft x 14ft





# Luxury Facilities Suite

27ft x 14ft

50ft x 14ft

60ft x 20ft



*Dear Valued and Prospective Customers,*

*We offer a wide range of high-quality products, including park homes and leisure lodges, caravans, motels and glamping products. We focus on the highest standards of quality, durability, and customer service.*

*Our team at Park Realty Group is dedicated to providing exceptional service and support to our customers. We take pride in working closely with you to understand your needs and preferences, so we can offer bespoke solutions that meet your specific requirements. Whether you are looking to create a unique holiday experience for your guests or generate additional revenue streams through mobile accommodation solutions. We have the expertise and experience to help you achieve your goals.*



*Janine Dove*  
DIRECTOR





## Land and Parks for sale

All sales are confidential and  
Off Market

We have a retained list of  
buyers and we have buyers  
waiting for the right  
opportunity.

If you are looking to sell or  
buy please contact us,  
confidentiality assured.

**0800 090 3052**



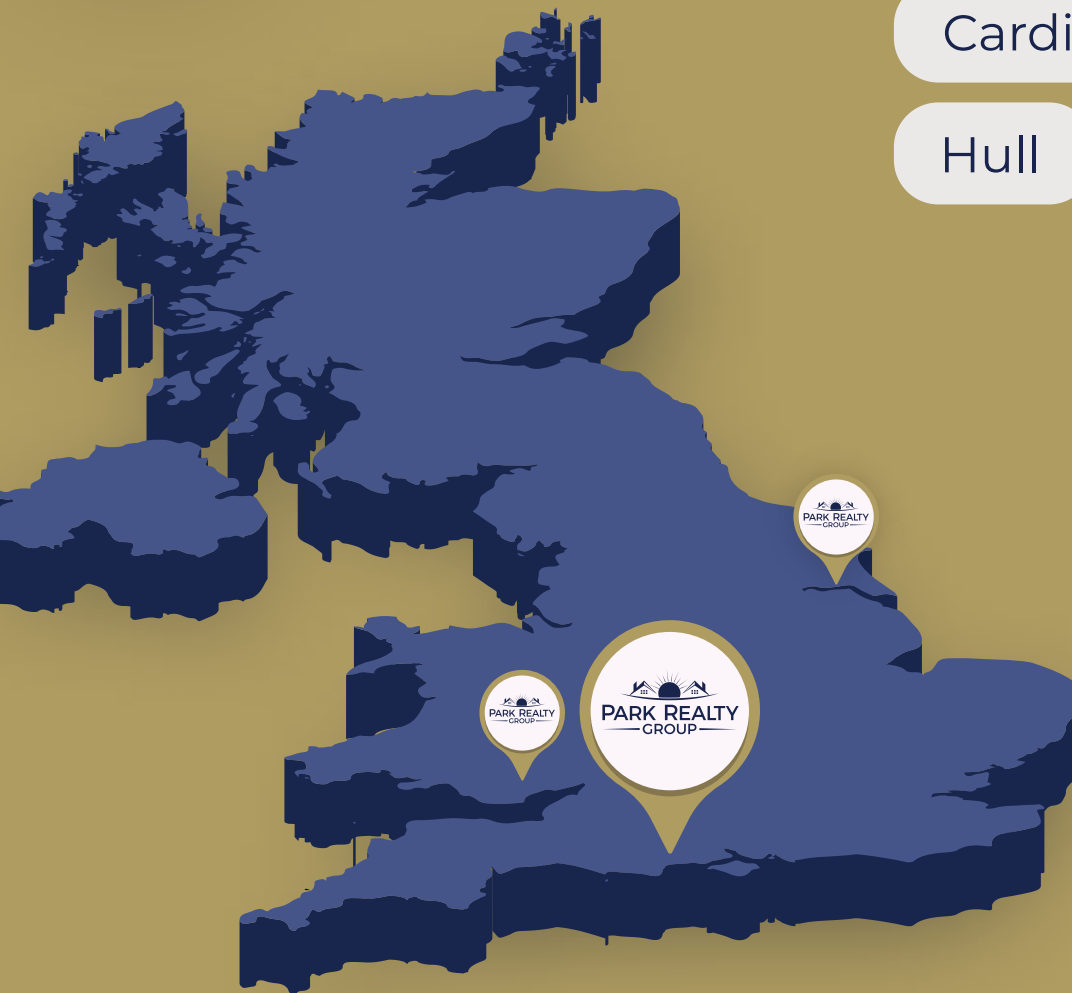


## LOCATIONS

Bournemouth

Cardiff

Hull



0800 090 3052



[parkrealtygroup.co.uk](https://parkrealtygroup.co.uk)



Looking to create a unique and  
unforgettable experience for  
your guests?