



THE ORIGINAL TYRE SEALANT

MINING



DATA SHEET



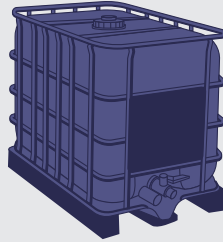
AVAILABLE IN:



25 L

DRUMS

(32 PER PALLET)
FOR WORKSHOP FITMENT



1000 L

IBCs

(1 PER PALLET)
FOR BULK FITMENT

SOLD SEPARATELY:

An adjustable, all-alloy OKO Pump fits the drum and applies pre-measured OKO at up to 250ml/8.5 fl oz per downward stroke, against up to 60 psi/ 4.1 bar tyre pressure.



Alternatively, many users pour pre-measured pails or full drums into the open tyre well when fitting a new tyre.

OKO SEALANT TARIFF NUMBER: **HS 3824 99 96 99**

OKO PRESSURE APPLICATION PUMP TARIFF NUMBER: **HS 8413 20 00 90**



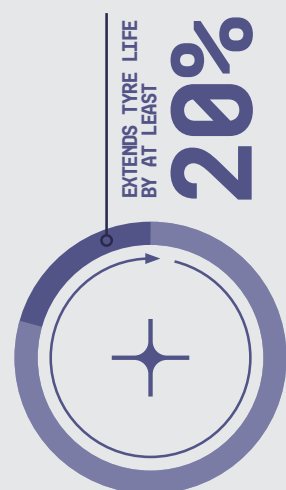
Manufacturer address:
OKO Global LLP
167-169 Great Portland Street, 5th Floor,
London W1W 5PF, UK

EU Importer:
OKO Iberia S.L.
Calle Ramón de la Sagra 2,
29740, Málaga, Spain

www.oko.com
UNIVERSAL@OKO.COM



- PERMANENTLY SEALS MULTIPLE PUNCTURES UP TO 20MM
- ENGINEERED FOR EXTREME OFF-ROAD ENVIRONMENTS, INCLUDING ROCKY, SANDY, OR MUDDY TERRAINS
- CUTS CARBON FOOTPRINT VIA TYRE LONGEVITY
- EXTENDS TYRE LIFE BY AT LEAST 20%
- THE STRONGEST TYRE SEALANT YET PRODUCED



BENEFITS

Seals tread area punctures instantly upon occurrence

Protection against flat tyres: The cost of protecting a four wheeled vehicle is far less than the cost of one tyre. Fit to new or fresh tyres for the maximum effect and payback.

Tyre life extension: By keeping air in the tyre, and cooling and conditioning it from inside, OKO extends tyre life by **20%** on average.

Remoulds: OKO causes no problems. The sealant washes out easily.

Vulcanizing: First remove OKO with water, then dry tyre with a 'BUFSOL' solution.

Retreading: Often limited by the life of the tyre's inner liner. OKO keeps a tyre in a 'like new condition' longer, allowing the casing to be re-treaded more often. OKO assists in making retreads last longer.

FUNCTION & USE

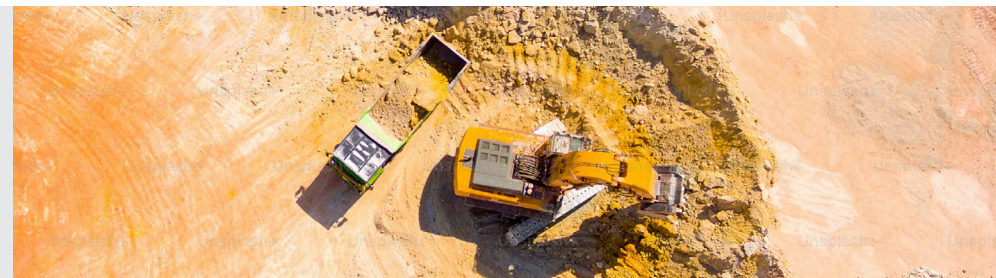
An extra-heavy duty tyre sealant. Prevents punctures and stops tyre deflation as you drive: seals a puncture in the tread area the moment the puncture happens. Designed for use in large tyres, in the very harshest off-road environments. Lasts the legal life of the tyre.

Provides a permanent seal to any puncture in the tread area caused by puncturing objects with a diameter of up to **20mm**, in the largest tubeless tyres. (May seal larger punctures, but then the tyre is likely to be structurally damaged).

Only a small amount of OKO is used in making each seal.

OKO Mining remains liquid inside the tyre even after multiple sealing events.

For both tubeless pneumatic tyres & inner tubes (cannot seal as large a puncture in tubes, and slits will not be sealed).



CHARACTERISTICS

An aqueous glycol based solution comprising specially treated constituents of the highest grade, environmentally-friendly rust inhibitors for anticorrosion purposes, adhesion agents, gums and

preservatives, held in suspension to provide a carefully engineered matrix. No shaking is necessary (unlike many other sealants that separate in the bottle/drum and in the tyre).

Non Corrosive - Non Flammable - Non Hazardous - No adverse affect upon tyres or wheel rims.

Product

Purple colour. Viscous. Low odour.

Quantity

Refer to drum label or see the Dosage Calculator at www.oko.com

APPLICATIONS

Recommended for: Off Road & slower-moving vehicles with large tyres running on bad terrain. Typical applications include:

Mining and Quarrying - All pneumatic-tyred vehicles. (Using the maximum recommended dosage, it can replace solid-fill tyres at much lower cost with no excessive weight or bad ride problems)

Industrial & Construction - Excavators; Earth Movers; Road makers; Diggers; Wheel loaders; Refuse & waste disposal."



PRECAUTIONS

Keep out of the reach of children. Wear eye protection. Do not swallow. No specific risk and safety labels or warnings are required since this product is not classified as hazardous under current regulations. (MSDS available on request).

Speed: OKO Mining Xtra Heavy Duty is designed for slower moving heavy industrial vehicles. It should not be used in on road vehicles or driven regularly at speeds in excess of 80 km/h (50 mph).