



escoco

Engineered Intelligence

Working in partnership with:

siegmund

KEMPER

LORCH
smart welding

Miller

Fronius

HYPER THERM
A Hypertherm Associated Brand

ABICOR
BINZEL

SAIT

KUTAVAR

UNIVERSAL
ROBOTS



WELDING TABLES



FUME EXTRACTION



TIG WELDING



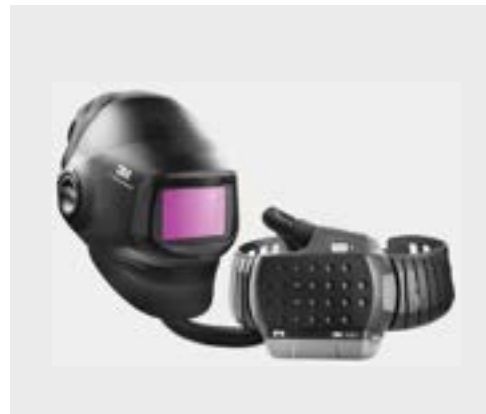
MIG WELDING



PLASMA CUTTING



COMPRESSORS



WELDING PPE



WELDING CONSUMABLES





About ESCCO

We are a supplier of leading industry brands that are established in the welding industry, backed by an accumulated wealth of technical expertise spanning 40 years.

We pride ourselves on stocking a wide range of welding and engineering equipment and consumables for your workshop needs. If there is a product you require that we don't stock, we'll endeavour to source it for you.

Trusted By





Working in partnership with:

siegmund

KEMPER

LORCH
smart welding

Miller

Fronius

HYPER THERM
A Hypertherm Associates Brand

ABICOR
BINZEL

SAIT

KUTAVAR

UNIVERSAL
ROBOTS

siegmund

The World's Strongest Welding Tables

Siegmund manufacture the toughest, most versatile and precise welding tables on the market. They are a globally recognised leading company in the field of producing welding tables. They offer high accuracy allowing you to work much faster and save a lot of your production time.

Siegmund welding tables come in many different shapes, sizes and materials and can be chosen depending on your specific needs.

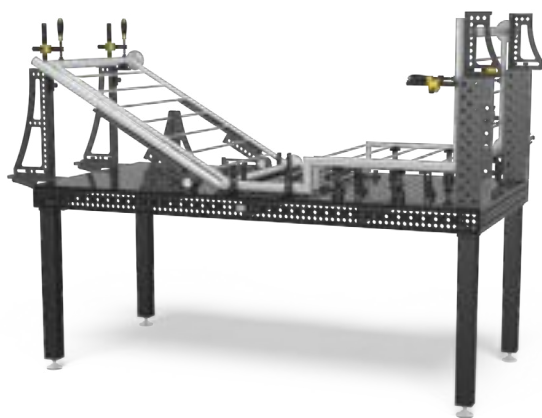
We also offer other products to go with your welding table. We have a variety of different tooling sets in various sizes which are an essential accessory for your welding table.



Siegmund Welding Tables

Siegmund Welding Tables come in three distinct variations which are determined by the size of the system boreholes (16, 22 & 28mm). The most popular tables are the System 16 table which is used for more intricate fabrication & the System 28 is the strongest table with the tightest tolerances for heavy duty welding.

Escoco hold a large range of Siegmund welding tables and tooling in stock at our facility in Hereford. We also offer demonstrations in-house, via Teams/Zoom or even on site should this be required.



System 16

- 16mm Borehole
- 12mm Thick Plasma-Nitrided Steel
- Ideal for lighter-duty fabrication



System 22

- 22mm Borehole
- 18mm Thick Plasma-Nitrided Steel
- For medium-duty fabrication



System 28

- 28mm Borehole
- 25mm Thick Plasma-Nitrided Steel
- For heavy-duty fabrication



FLAIG

Magnetsysteme

Magnetic Lifting Solutions

Flaig Magnetsysteme is the leading manufacturer of permanent and electro-permanent magnet systems.

Flaig Magnets are used in a wide range of metal processing industries from robotic CNC tending, to toolmaking & warehousing.

In addition to a wide range of standard lifting magnet technology, Flaig Magnetsysteme offers bespoke Magnets and lifting solutions.

Flaig Magnetsysteme

Unique to Flaig magnets is their commitment to 100% recyclability & NFC "Green Dot". Using your mobile phone, you will find all information about the magnet. From technical documents, serial number, warranty, and the refund value you'll receive from returning your old magnets to us for recycling.



PERMANENT LIFTING MAGNETS



ELECTRO-PERMANENT
LIFTING MAGNETS



SPECIAL SOLUTIONS



KEMPER®

Welding Fume Extraction Solutions

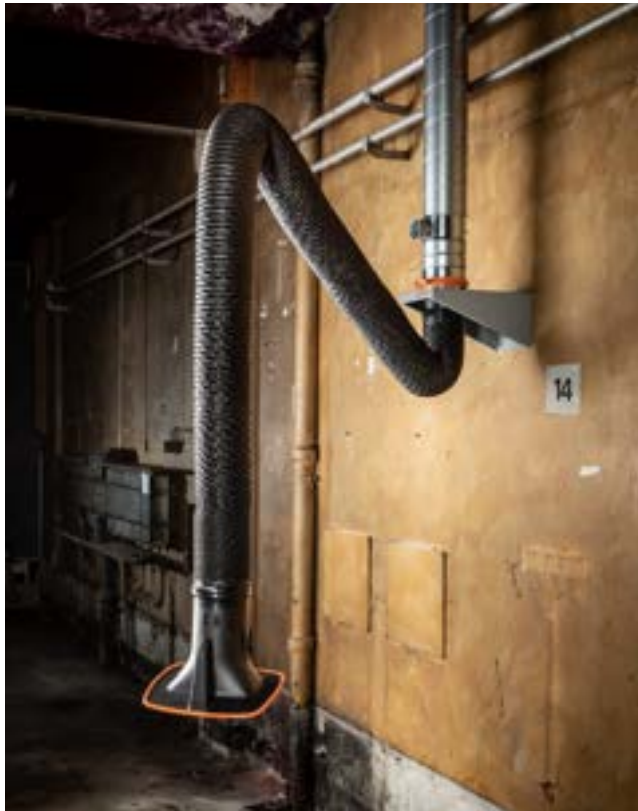
Kemper, the family business established in 1977, is a pioneer and technology leader in the field of welding fume extraction and bespoke premium packages.

The German manufacturer offers a wide range of solutions for the welding sector including extraction arms, mobile extraction units, central extraction systems, extraction tables, general ventilation and more.



Kemper

Escoco have partnered with Kemper to provide a wide scope of premium fume extraction equipment into the metal fabrication markets. We've supplied the Kemper solutions into a number of industries including construction, automotive, nuclear, shipbuilding and general engineering. For some of the bespoke client requests, we also provide our own installation and LEV testing as a complete turnkey package. All of our work is completed to full satisfactory of the HSE and Health & Safety measures.



EXTRACTION ARM



MOBILE EXTRACTION



ON-TORCH EXTRACTION



LORCH

smart welding

Welding Machines, Consumables & Spares

Proudly made 100% in Germany for more than 60 years. Lorch are industry leaders in quality MIG, TIG and most recently Cobot welding robotic systems.

The welding equipment engineered by Lorch merges first-rate suitability for real-world applications with superior ease of use and outstanding efficiency, setting new technological standards in the marketplace.



Lorch

Lorch offer a quality range of MIG, TIG and ARC equipment, which is all manufactured in Germany. The MicorMIG range has been very popular for the structural steelwork industry where speed and precision of weld is a must. Lorch also offer innovative battery powered MMA welders which are ideal for onsite applications.



TIG WELDING



MIG WELDING



MMA WELDING



Welding Machines, Consumables & Spares

Miller is one of the world's largest manufacturers of arc welding and cutting equipment. Serving world-class welding equipment & consumables to those in fabrication, construction, aviation, motorsports, education, agriculture, marine & more.

This American renowned brand has an extensive portfolio of superior welding equipment including MIG/MAG, TIG, MMA and welding generators.



Miller

Miller have a world-class range of arc welding and cutting equipment for all sectors of industry. The heavy duty equipment with its ease of use attracts all welders to their product offering. The Pulse functions for MIG/MAG processes are unparalleled, supported with reduced fumes and no weld spatter.



MIG WELDING



TIG WELDING



WELDER GENERATOR





Welding Machines, Consumables & Spares

Fronius welding machines are technology driven products with the highest levels of quality, cost effectiveness, energy efficiency, and robust design for any working environment.

The digital control ensures an exceptionally stable arc and 100% reproducible welding results. Intuitive and smart operating concepts make your life easier.



Fronius

Every Fronius welding machine is an innovative and powerful solution you can use to complete all your welding tasks in an instant. Whether it's for Stick, MIG or TIG, Fronius is a welding technology leader and offers the ideal product solution for all welding processes.





Plasma Cutters, Torches & Consumables

Hypertherm, are shaping the future with cutting and gouging solutions that can make anything possible.

From aerospace to agriculture and energy to infrastructure, the people, brands, and technologies of Hypertherm Associates are already found everywhere. Advanced manufacturing is happening around the globe.



Hypertherm

Hypertherm is the market leader of industrial plasma cutting technologies with a range of power units and consumables covering the whole spectrum of cutting. The most popular models comprise of Powermax, Maxpro & XPR with a spectrum of both hand and machine cutting torches to suit.



PLASMA CUTTERS



PLASMA TORCHES



CONSUMABLES



Fume Extraction Torches, Consumables & Spares

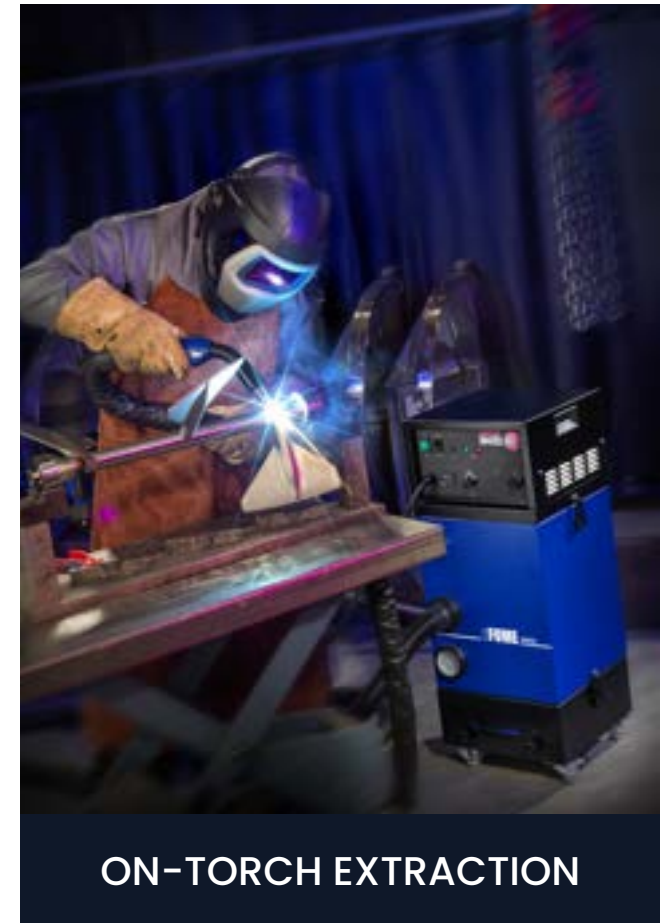
Escco's collaboration with Binzel has grown from strength to strength over the past 25 years. The Binzel welding torches and equipment is more than ever subject to safety, quality and functionality.

Protecting welder's health with effective fume extraction and lightweight torches has proved fundamental to the development of these German robust welding products. The torch range covers manual use, semi or full automation.



Abicor Binzel

Binzel's portfolio of products comprises of a range of welding torches (MIG, TIG etc), consumables & fume extraction equipment. Escoco have worked closely with Binzel with on-site client demonstrations into many sectors including nuclear, structural, shipbuilding, general fabrication and more.





Premium Abrasives for the Welding Industry

Founded in 1953, SAIT is today one of the most important companies on the European and world scene for the production of rigid and flexible abrasives for industrial use.

Here at Escco we offer a wide selection of SAIT abrasives from cutting discs, to sanding belts and ceramic discs for the welding and engineering industry.



SAIT Abrasives

SAIT have supported Escco for many years with a wide range of their abrasive products supplied from their factories in Italy. Although they offer solutions for wood & stone, our main focus has been targeted on the metal working finishing sectors. The range includes premium slitting, grinding, cutting & sanding discs along with emery sheets, rolls, etc.





PPE, Spares & Abrasives

3M is a manufacturer and distributor of industrial products and solutions.

Their portfolio of products includes advanced materials, display materials and systems, home care, home improvement, stationery and office, personal safety, roofing granules, closure and masking systems and others.



3M Technology

Escoco have partnered with a range of the 3M products bespoke to the metal fabrication industry. This primarily includes the safety products from face masks to Speedglas airfed welding helmet systems. We also promote a range of the abrasives including the Cubitron II discs which are unrivalled in their class.



WELDING HELMETS



WELDING PPE



ABRASIVES



KUTAVAR

Plasma CNC Cutting Machines

KUTAVAR is designed to push the boundaries of the market sector it sits within, simply by introducing component design and tolerances that are unrivalled, only present in larger-scale machinery sectors.

Designed to micron (μm) tolerances, not millimetres. Components are precision machined from graded aluminium alloy tooling plate, guaranteeing the fundamental characteristics specified at the design stage. These being: Mechanical strength, corrosion resistance, and dimensional stability.



Kutavar

KUTAVAR CNC plasma machines are powered by the two leading global brands in plasma cutting, Hypertherm and Kjellberg. Depending on which power source is selected, a maximum pierce capacity of 50 mm is achievable on mild steel, and 38 mm on aluminium and stainless steel. There is a power source available to suit all applications.





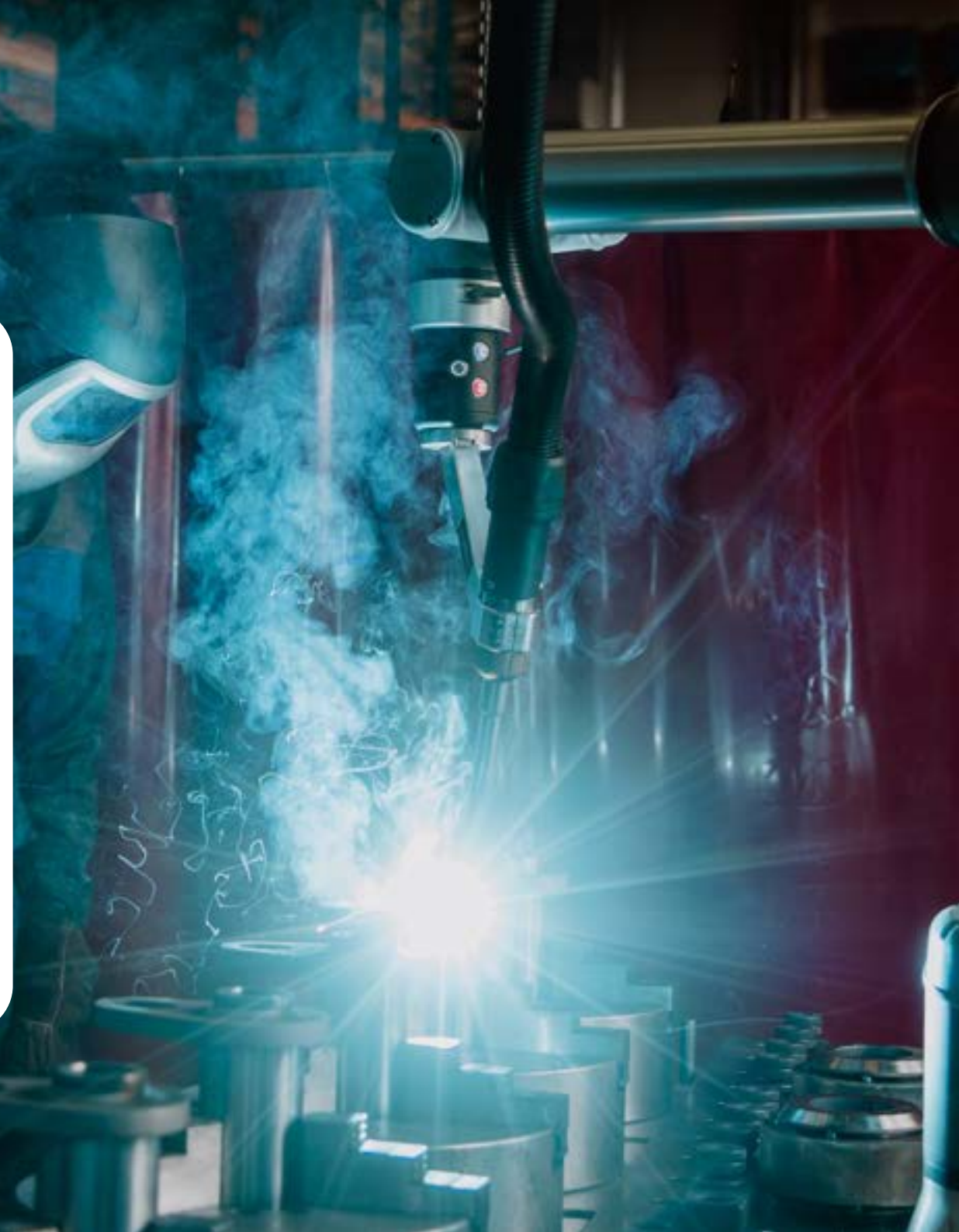
UNIVERSAL ROBOTS

Collaborative Robotic Automation

The global leader in automation. Universal Robots provide the solution to the ever-increasing demands for labour in industry.

Unlike industrial robots, Cobots are designed to work collaboratively with people in the same environment. This removes the need for complex safety barriers and cages.

Skilled welders/fabricators can focus on intricate work that demands their skillset, whilst the Cobot handles the more monotonous tasks.

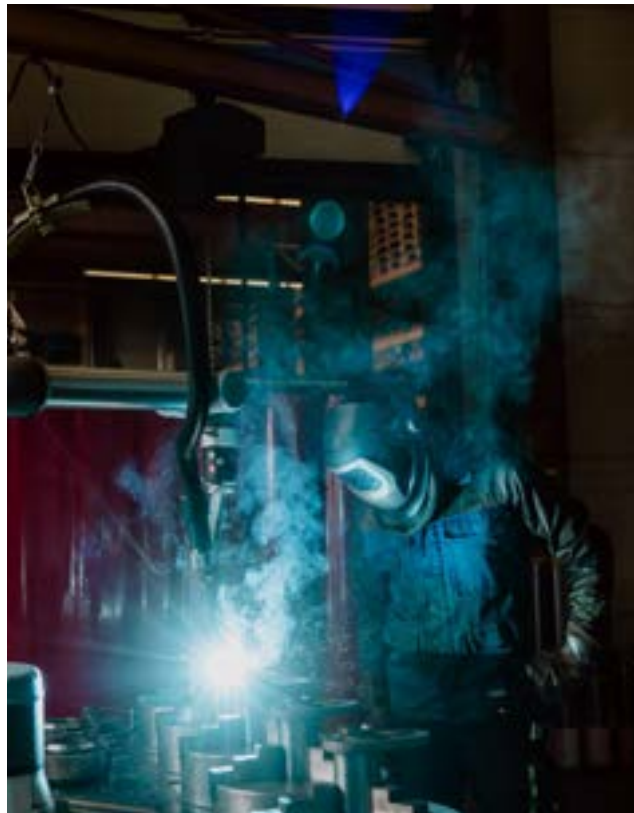


Universal Robots

A Universal Robots arm can be used at every stage of a production line. With an extensive range of attachments; force-sensitive grippers, welding torches, sanding discs, etc. The robot can easily adapt to the changing demands of your business.



PARTS ASSEMBLY



WELDING



FINISHING



PMUC NUCLEAR

Approved Welding & Engineering Consumables

Escco is proud to be an approved stockist of a range of PMUC certified consumables for the nuclear industry. These products are primarily used in conjunction with stainless steel materials and include: -

- *Abrasives*
- *Aerosols*
- *Films*
- *Pens*
- *Sealants*
- *Tapes*

We also provide on-site service and technical support for the range of capital equipment and welding consumables that we supply. This includes welding machinery calibrations and LEV testing for fume extraction units.

Demonstration and hire facility is also available to meet your daily demands.



PMUC Nuclear

Escco have become a specialist and stockist of a wide range of PMUC approved consumable products for the nuclear industry. The current range includes abrasives (cutting, grinding & flap discs/wheels), films, a wide range of tapes, marker pens, NDT aerosols and more. We can also provide certification for each separate batch of product.





Workplace Storage Solutions

With over 90 years of industry experience, Bott is the premium option for workplace storage solutions. Bott is designed to perform and built to last.

Looking to improve workplace efficiency? A professional Bott system will help. Their flexible and adaptable solutions allow for unique applications and seamless expansion for when your business needs change.



Capital Equipment Hire

We offer a large range of machines and welding equipment for hire on a monthly or long term basis to trade account customers. You can hire everything you need from welding tables to plasma CNC machines to successfully get your job done. Our equipment is supplied from industry leading manufacturers such as Siegmund, Kutavar and Miller.

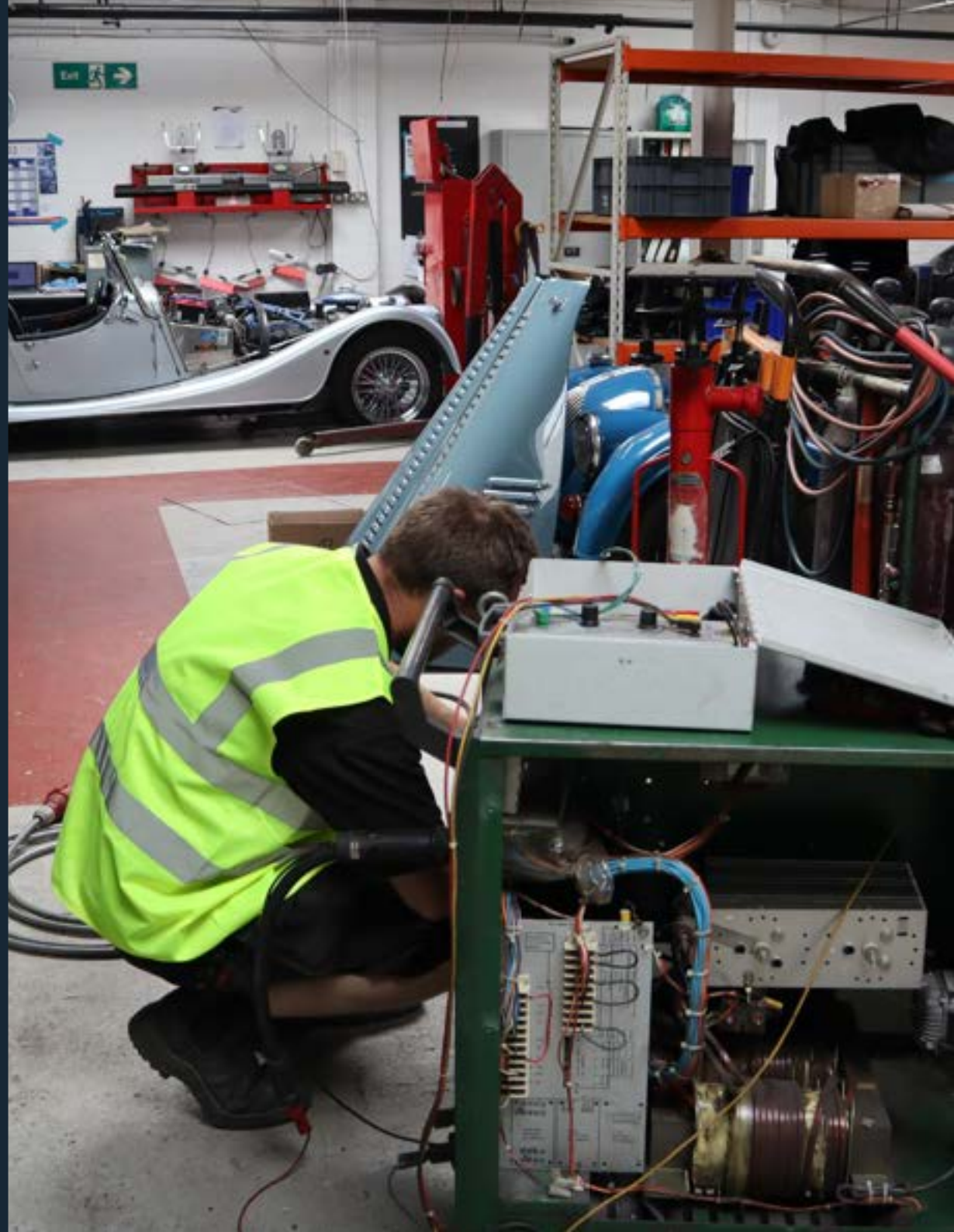


Service

Here at Escco, we have a dedicated in-house team of skilled service technicians who provide all manners of assistance within Welding and CNC plasma range.

With services such as repairs, calibrations, testing and annual servicing available.

We have established long-term relationships with many of the industry leading manufacturers to secure parts and consumables for all of your needs.



Contact Us



Phone: +44 (0)1432 346190

Email: sales@escoco.co.uk

Website: www.escoco.co.uk



Find us on Facebook, WhatsApp, Instagram
and LinkedIn by searching **ESCCO Ltd**



escoco

Engineered Intelligence

The UK & Ireland's premium supplier of welding technology

www.escoco.co.uk



1 Beacon Road,
Hereford, Herefordshire
HR2 6JF
United Kingdom

© ESCCO UK | 2024- VI



British

