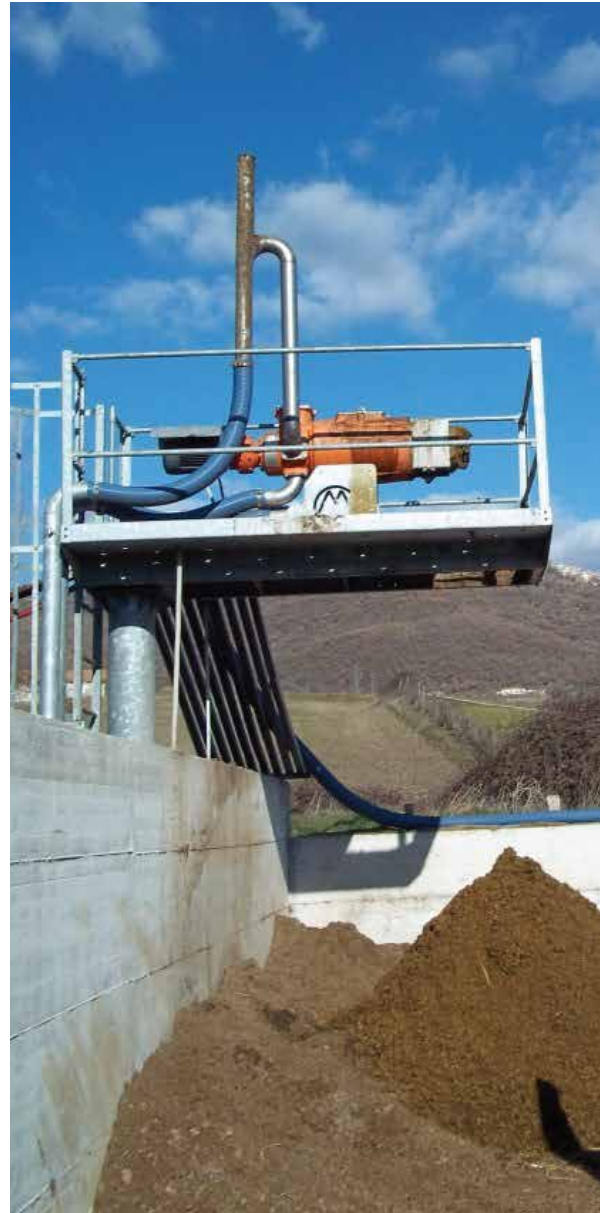


Farm Slurry & Biogas Separator Range





Why choose T-T Agricultural and Environmental?

T-T's Agricultural and Environmental Division has been formed to focus specifically on effluent treatment and anti-pollution products. T-T has a distinct advantage when dealing with sensitive environmental systems. We are able to merge our vast experience and expertise in pumps, controls, valves and service with support of our internal design capabilities.



Features of the SM Range:

- Increase slurry storage by up to 30%
- Epicyclic gearbox for increased torque and lower input consumption
- Stainless steel wedgewire screen for increased longevity
- Double threaded screw design featuring tungsten matrix hardening
- High dry matter versions producing up to 40% dry matter capabilities

**The SM range is available in six models
and can be supplied as an individual
item or as part of a complete system**



Separator Benefits

Sealing System

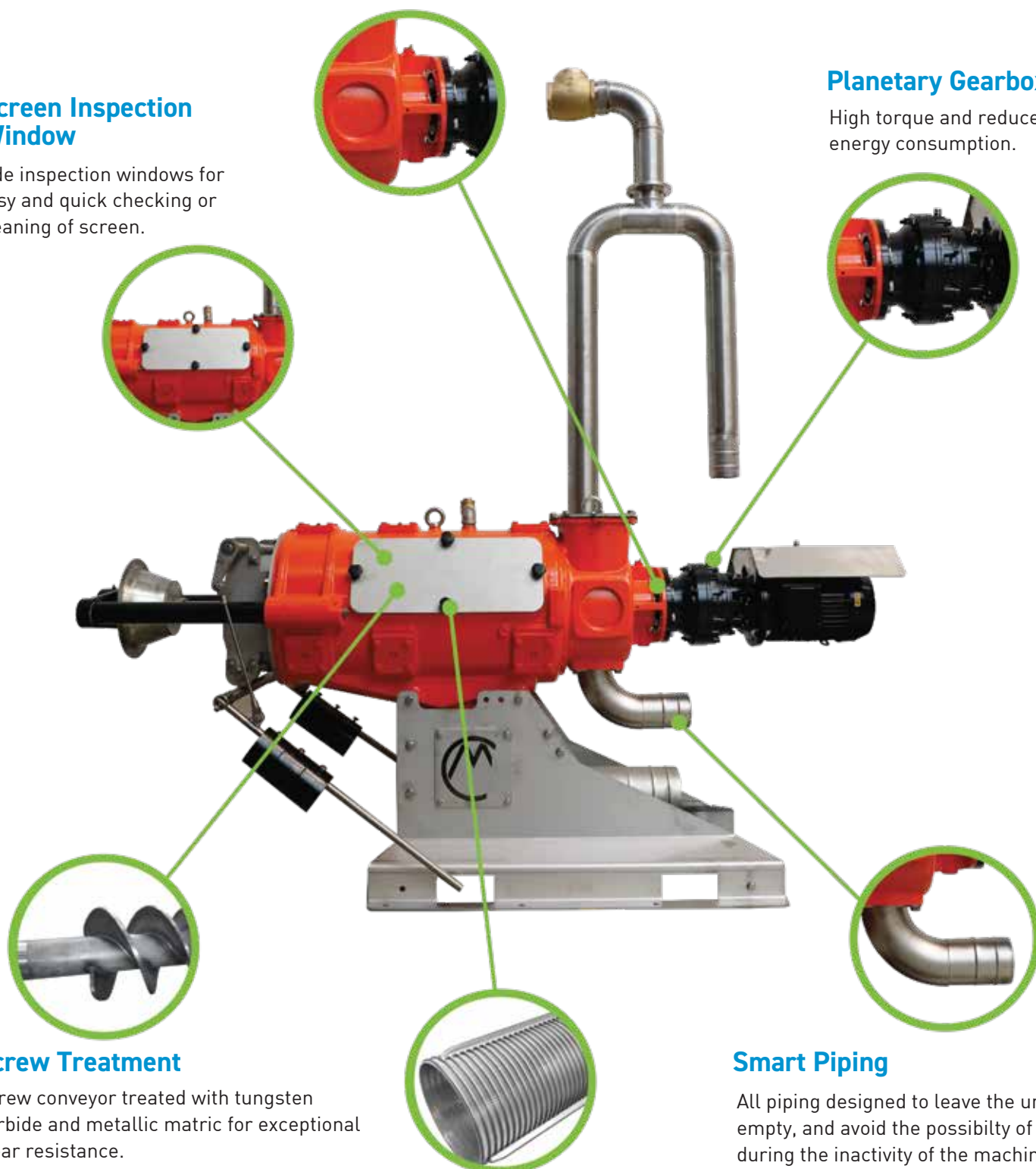
System of three lip seals with grease ring for a secure sealing between the separator and the gearbox. (Mechanical seal upon request)

Screen Inspection Window

Side inspection windows for easy and quick checking or cleaning of screen.

Planetary Gearbox

High torque and reduced energy consumption.



Screw Treatment

Screw conveyor treated with tungsten carbide and metallic matrix for exceptional wear resistance.

Screens

316 Stainless steel screens with geometrical structure for strength, offering up to 3000 working hours life span.

Smart Piping

All piping designed to leave the unit empty, and avoid the possibility of freezing during the inactivity of the machine.

Introducing the SM Range:



SM 260 Mini

The SM 260 Mini is the base model within the range and is aimed at the smaller farmer. The SM Mini has a production rate of upto 18m³/h providing excellent entry level performance.

Features include:

- 3 kW motor
- Epicyclic drive line
- Up to 30% dry matter
- Stainless steel internals
- 4.5 - 18m³ production rate



SM 260 Basic

The SM 260 Basic is designed for herds up to 800h/c. The SM Basic has a production rate of up to 50m³/h making it more than capable for most farms.

Features include:

- 4 kW motor
- Epicyclic drive line
- Up to 30% dry matter
- Stainless steel internals
- 4 - 50m³ production rate



SM 260 Pro

The SM 260 Pro is designed with medium/large farms and the biogas industry in mind. Performance matching the basic version with the addition of an end supporting bearing for improved screw support.

Features include:

- 4 kW motor
- Epicyclic drive line
- Up to 30% dry matter
- Stainless steel internals
- 4 - 50m³ production rate
- 6 - 72m³ production rate (Pro 300 series)



SM 260 Mini DM

The SM 260 Mini DM is a compact high dry version of the standard mini separator producing dry matter suitable for RMS applications.

Features include:

- 5.5 kW motor
- Epicyclic drive line
- Up to 37% dry matter
- Stainless steel internals
- Up to 18m³ production rate



SM 260 DM

The SM 260 DM provides high dry matter production suitable for RMS applications.

Features include:

- 5.5 kW motor
- Epicyclic drive line
- Up to 37% dry matter
- Stainless steel internals
- Up to 22m³ production rate



SM 260 FA DM

The SM 260 FA DM provides high dry matter production suitable for RMS applications with an additional screen for a higher throughput and higher dry matter production.

Features include:

- 7.5 kW motor
- Epicyclic drive line
- Up to 40% dry matter
- Stainless steel internals
- Up to 32m³ production rate

