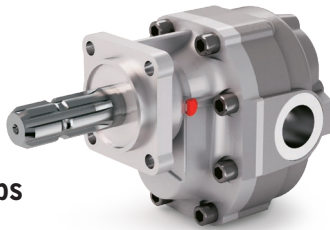


EFZO - EFZH Agri Gear Pumps

DIN 9611 SAE 1" 3/8
 Displacement: 15 ÷ 150 cm³/rev
 Max continuous operating pressure: up to 315 bar
 Max continuous speed: up to 2500 r.p.m.
Available with cylindrical coupling ø22



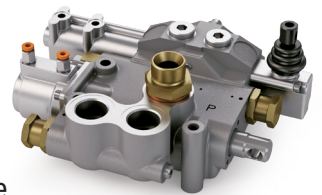
EFG Motor Pump Group

Motor displacement: 65 ÷ 71.6 cm³/rev
 Pump displacement: 57 ÷ 71.6 cm³/rev
 Nominal pressure: 225 bar
 Max Speed: up to 2500 r.p.m.



DM 151 Tipping Valve

Pneumatic operated 150 l/min distributor
 It includes inlet check valve and adjustable relief valve, independent for main section and auxiliary sections
 Auxiliary sections from 1 to 3, single or double effect, with electric or manual control
 Main distributor flow rate: 150 l/min
 Max working pressure: up to 300 bar
 Auxiliary section adjustable flow rate: up to 60 l/min max



Underbody Telescopic Cylinders

First stage diameter: 90 ÷ 279 mm
 Number of stages: 2 ÷ 10
 Stroke: 400 ÷ 6400 mm
 Max pressure: up to 300 bar
 Different types of connections
Available with one or more chromed stages



**IPH OFFERS A COMPLETE RANGE OF TECHNOLOGICAL SOLUTIONS
 TO MEET THE EVOLVING DEMANDS OF THE SECTOR**



Front End Cylinders SERIES 5

First stage diameter: 98 ÷ 221 mm
 Number of stages: 2 ÷ 6
 Stroke: 2200 ÷ 10000 mm
 Max pressure: up to 250 bar
 Tipping weight: 5 ÷ 100 ton
 Light weight design for heavy duty application
 Faster tipping cycle
Available with one or more chromed stages

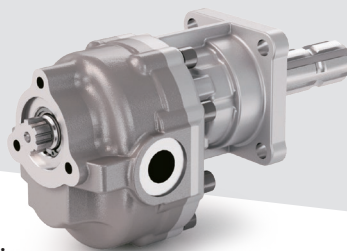
FOX Agri Piston Pumps

DIN 9611 SE
 Displacement: 64.08 ÷ 130 cm³/rev
 Max operating pressure: up to 450 bar
 Max intermittent speed: up to 2500 r.p.m.
Light version also available



EFZO - EFZH Agri Tandem Gear Pumps

DIN 9611 SAE 1" 3/8 (Male / Female)
 Displacement: 36 ÷ 150 cm³/rev
 Max operating pressure: up to 300 bar
 Max continuous speed: up to 2500 r.p.m.
Available with cylindrical coupling ø22



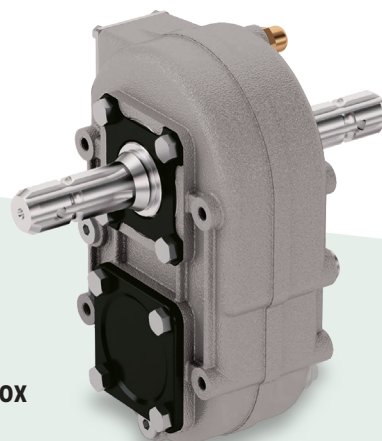
VFCR Tipping Valve

Mechanical two-way end-of-stroke valve
 (push-pull) for tipping vehicles
 Flow rate: 60 ÷ 250 l/min
 Max working pressure: up to 350 bar



Agri-Box Agricultural Splitter Gearbox

Output ratio: 1.52:1
 Max output speed: up to 2000 r.p.m.
 Max torque rating through the input shaft: 985 Nm
 Variable configurations with direct pump mounting
 or with drive shaft flange



**THE RANGE INCLUDES COMPLETE KITS FOR AGRICULTURAL TIPPING TRAILERS,
 CUSTOMISED AND WITH MANY CONFIGURABLE OPTIONS**