



# INTERPUMP

FLUID SOLUTIONS 

Powered by I.M.M. Hydraulics

## Hydraulic Hose

2024



# Hydraulic Hose

INTERNATIONAL STANDARDS

HIGH PERFORMANCE

HYSOBARIC LINE

SOLUTIONS FOR APPLICATIONS

Thermoplastic

PTFE



# INTERNATIONAL STANDARDS





**TFA201KI**



Hypress EASY K 15C

**3**

**TFA202KI**



Hypress EASY K 25C

**4**

**TFD2012**



INTERPUMP Hypress One  
15N

**5**

**TFD2022**



INTERPUMP Hypress  
Two 25N

**6**

**TFE201K**



INTERPUMP Hypress 15C

**7**

**TFE202K**



INTERPUMP Hypress 25C

**8**

**TFS0017**



INTERPUMP Hypress R17

**9**

**TSR04SP**



INTERPUMP Hypress  
FOUR SP

**10**

**TFDM4SP**



INTERPUMP Hypress 4SP

**11**

**TFS0006I**



Hypress UniLock

**12**

**TFE02TEI**



Hypress 2TE

**13**

**TFE03TEI**



EN 854 3TE

**14**

**TFS0005**



SAE 100R5

**15**

**TFS0004**



INTERPUMP Hy-VACUUM  
- SAE 100R4

**16**

# Hypress EASY K 1SC

## APPLICATIONS :



## TFA201KI



## APPLICABLE SPECIFICATIONS

EN 857 1SC - ISO 11237

Compact hose according to EN 857 ISO 11237. NO-SKIVE solution. Smooth cover.

**Inner tube:** Synthetic rubber, extruded whole without joints, of uniform thickness.

**Reinforcement:** 1 high tensile steel wire braids.

**Coverage:** Smooth synthetic rubber, resistant to oils, fuels and atmospheric conditions.

**Recommended fluids:** Mineral and biological oils, glycol-water based, water, lubricants.

**working temperature:** from -40 to +100°C, from -40 to +70° C for water based fluids, from 0 to +70°C water.

Product number	ID		Dimension dash size	OD	Max WP		Min BP		Min BR		Weight (approx)		Ferrule
	in	mm			bar	psi	bar	psi	mm	inch	kg/m	lb/ft	
TFA201KI04	1/4"	6.4	04	12.3	225	3263	900	13050	75	2.953	0.182	0.122	001C-04
TFA201KI05	5/16"	8	05	13.5	215	3118	860	12470	85	3.346	0.203	0.136	001C-05
TFA201KI06	3/8"	9.5	06	15.7	180	2610	720	10440	90	3.543	0.248	0.167	001C-06
TFA201KI08	1/2"	12.7	08	18.9	160	2320	640	9280	130	5.118	0.341	0.229	001C-08
TFA201KI10	5/8"	16	10	22.4	130	1885	520	7540	150	5.906	0.421	0.283	001C-10
TFA201KI12	3/4"	19	12	25.9	105	1523	420	6090	180	7.087	0.491	0.33	001C-12
TFA201KI16	1"	25.4	16	33.7	88	1276	352	5104	230	9.056	0.74	0.499	001C-16

**Marking:** Ink-jet

# Hypress EASY K 2SC

## TFA202KI



### APPLICATIONS :



### APPLICABLE SPECIFICATIONS

EN 857 2SC - ISO 11237

Compact hose according to EN 857 ISO 11237. NO-SKIVE solution. Smooth cover.

**Inner tube:** Synthetic rubber, extruded whole without joints, of uniform thickness.

**Reinforcement:** 2 high tensile steel wire braids.

**Coverage:** Smooth synthetic rubber, resistant to oils, fuels and atmospheric conditions.

**Recommended fluids:** Mineral and biological oils, glycol-water based, water, lubricants.

**working temperature:** from -40 to +100°C, from -40 to +70° C for water based fluids, from 0 to +70°C water.

Product number	ID		Dimension dash size	OD	Max WP		Min BP		Min BR		Weight (approx)		Ferrule
	in	mm			bar	psi	bar	psi	mm	inch	kg/m	lb/ft	
TFA202KI04	1/4"	6.4	04	13.3	400	5800	1600	23200	75	2.953	0.281	0.189	001C-04
TFA202KI05	5/16"	8	05	14.8	350	5075	1400	20300	85	3.346	0.327	0.22	001C-05
TFA202KI06	3/8"	9.5	06	17.1	330	4785	1320	19140	90	3.543	0.418	0.281	001C-06
TFA202KI08	1/2"	12.7	08	20	275	3988	1100	15950	130	5.118	0.525	0.353	001C-08
TFA202KI10	5/8"	16	10	23.2	250	3625	1000	14500	170	6.693	0.627	0.421	001C-10
TFA202KI12	3/4"	19	12	27.6	215	3118	860	12470	200	7.874	0.782	0.526	001C-12
TFA202KI16	1"	25.4	16	35.8	165	2393	660	9570	250	9.843	1.176	0.79	001C-16



# INTERPUMP Hypress One 1SN

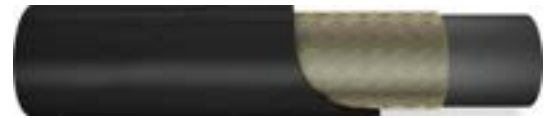
## APPLICATIONS :



## TFD2012

## APPLICABLE SPECIFICATIONS

Exceeds EN 853 1SN - SAE 100R1AT - ISO 1436 1SN



NO-SKIVE hose. Exceed Burst specification. Impulse tested up to double requirements. Reduced bending radius. Lightness. Smooth cover up to 1"

**Inner tube:** Synthetic rubber, extruded whole without joints, of uniform thickness.

**Reinforcement:** 1 steel wire braid.

**Coverage:** Anti-abrasive synthetic rubber, resistant to oils, fuels and atmospheric conditions.

**Recommended fluids:** Mineral and biological oils, glycol-water based, water, lubricants.

**working temperature:** from -40 to +100°C (intermittent 120°C), from -40 to +70° C for water based fluids, from 0 to +70°C water.

Product number	ID		Dimension dash size	OD	Max WP		Min BP		Min BR		Weight (approx)		Ferrule
	in	mm			bar	psi	bar	psi	mm	inch	kg/m	lb/ft	
TFD2012-03	3/16"	4.8	03	11.2	250	3625	1000	14500	45	1.77	0.171	0.114	001C-03
TFD2012-04	1/4"	6.4	04	12.8	225	3263	900	13052	50	1.97	0.198	0.133	001C-04
TFD2012-05	5/16"	8	05	14.4	215	3118	860	12472	60	2.36	0.237	0.159	001C-05
TFD2012-06	3/8"	9.5	06	16.9	180	2610	720	10440	70	2.76	0.301	0.202	001C-06
TFD2012-08	1/2"	12.7	08	19.9	160	2320	640	9280	90	3.54	0.361	0.242	001C-08
TFD2012-10	5/8"	16	10	23.1	130	1885	520	7540	100	3.94	0.456	0.305	001C-10
TFD2012-12	3/4"	19	12	27.2	105	1523	420	6092	120	4.72	0.574	0.384	001C-12
TFD2012-16	1"	25.4	16	35.2	88	1276	352	5104	150	5.91	0.848	0.568	001C-16
TFD0012-20	1.1/4"	31.8	20	42.6	63	914	250	3625	210	8.27	1.080	0.723	001C-20
TFD0012-24	1.1/2"	38.1	24	49.6	50	725	200	2900	250	9.84	1.340	0.897	001C-24
TFD0012-32	2"	50.8	32	63.0	40	580	160	2320	320	12.6	1.840	1.232	001C-32

# INTERPUMP Hypress Two 2SN

## TFD2022



### APPLICATIONS :



### APPLICABLE SPECIFICATIONS

Exceeds EN 853 2SN - SAE 100R2AT - ISO 1436 2SN

NO-SKIVE hose. Exceed Burst specification. Impulse tested up to double requirements. Reduced bending radius. Lightness. Smooth cover up to 1"

**Inner tube:** Synthetic rubber, extruded whole without joints, of uniform thickness.

**Reinforcement:** 2 high tensile steel wire braids.

**Coverage:** Anti-abrasive synthetic rubber, resistant to oils, fuels and atmospheric conditions.

**Recommended fluids:** Mineral and biological oils, glycol-water based, water, lubricants.

**working temperature:** from -40 to +100°C (intermittent 120°C), from -40 to +70° C for water based fluids, from 0 to +70°C water.

Product number	ID		Dimension dash size	OD	Max WP		Min BP		Min BR		Weight (approx)		Ferrule
	mm	in			bar	psi	bar	psi	inch	mm	kg/m	lb/ft	
TFD2022-03	4.8	3/16"	03	12.8	415	6018	1650	24072	1.77	45	0.274	0.183	0022-03
TFD2022-04	6.4	1/4"	04	14.3	400	5800	1600	23200	1.97	50	0.323	0.216	0022-04
TFD2022-05	8	5/16"	05	15.9	350	5075	1400	20300	2.36	60	0.380	0.254	0022-05
TFD2022-06	9.5	3/8"	06	18.5	330	4785	1320	19200	2.76	70	0.474	0.317	0022-06
TFD2022-08	12.7	1/2"	08	21.5	275	3988	1100	15952	3.54	90	0.561	0.376	0022-08
TFD2022-10	16	5/8"	10	24.7	250	3625	1000	14500	3.94	100	0.623	0.437	0022-10
TFD2022-12	19	3/4"	12	28.8	215	3118	860	12472	4.72	120	0.850	0.569	0022-12
TFD2022-16	25.4	1"	16	37.2	165	2393	660	9572	5.91	150	1.279	0.856	0022-16
TFD0022-20	31.8	1.1/4"	20	46.5	125	1813	500	7250	8.27	210	1.855	1.242	0022-20
TFD0022-24	38.1	1.1/2"	24	53.1	90	1305	360	5220	9.84	250	2.015	1.349	0022-24
TFD0022-32	50.8	2"	32	65.8	80	1160	320	4640	12.6	320	2.690	1.800	0022-32

# INTERPUMP Hypress 1SC

## APPLICATIONS :



## TFE201K



## APPROVALS :

ABS, CCS

## APPLICABLE SPECIFICATIONS

Exceed EN 857 1SC - ISO 11237

NO-SKIVE hose. Exceed Burst specification. Impulse tested up to double requirements.

**Inner tube:** Synthetic rubber, extruded whole without joints, of uniform thickness.

**Reinforcement:** 1 steel wire braid.

**Coverage:** Smooth synthetic rubber, resistant to oils, fuels and atmospheric conditions.

**Recommended fluids:** Mineral and biological oils, glycol-water based, water, lubricants.

**working temperature:** from -40 to +120°C (intermittent 135°C), from -40 to +70° C for water based fluids, from 0 to +70°C water.

Product number	ID		Dimension dash size	OD	Max WP		Min BP		Min BR		Weight (approx)		Ferrule
	mm	in			bar	psi	bar	psi	mm	inch	kg/m	lb/ft	
TFE201K-03	4.8	3/16"	03	10.7	225	3263	900	13050	40	1.57	0.150	0.101	001C-03
TFE201K-04	6.4	1/4"	04	12.3	225	3263	900	13050	50	1.969	0.182	0.122	001C-04
TFE201K-05	8	5/16"	05	13.5	215	3118	860	12325	55	2.165	0.203	0.136	001C-05
TFE201K-06	9.5	3/8"	06	15.7	180	2610	720	10440	60	2.362	0.248	0.167	001C-06
TFE201K-08	12.7	1/2"	08	18.9	160	2320	640	9280	70	2.756	0.341	0.229	001C-08
TFE201K-10	16	5/8"	10	22.4	130	1885	520	7540	90	3.543	0.421	0.283	001C-10
TFE201K-12	19	3/4"	12	25.9	105	1523	420	6090	100	3.937	0.492	0.33	001C-12
TFE201K-16	25.4	1"	16	33.7	88	1276	352	5104	180	7.087	0.742	0.499	001C-16

Available with MSHA and Mega cover. In case of order use code TFEY01K and TFEV01K.

# INTERPUMP Hypress 2SC

## TFE202K



### APPLICATIONS :



### APPROVALS :

MED, BV, LLOYD'S, ABS, NKK, KR, DNV, CCS

### APPLICABLE SPECIFICATIONS

Exceed EN 857 2SC - SAE 100 R16 - ISO 11237

Compact hose with low bend radius (R16). NO-SKIVE solution. Exceed standard Burst requirements. Impulse tested up to double requirements. Certifications valid only for MSHA cover.

**Inner tube:** Synthetic rubber, extruded whole without joints, of uniform thickness.

**Reinforcement:** 2 high tensile steel wire braids.

**Coverage:** Smooth synthetic rubber, resistant to oils, fuels and atmospheric conditions.

**Recommended fluids:** Mineral and biological oils, glycol-water based, water, lubricants.

**working temperature:** from -40 to +120°C (intermittent 135°C), from -40 to +70° C for water based fluids, from 0 to +70°C water.

Product number	ID		Dimension	OD	Max WP		Min BP		Min BR		Weight (approx)		Ferrule
	mm	in	dash size		bar	psi	bar	psi	mm	inch	lb/ft	kg/m	
TFE202K-04	6.4	1/4"	04	13.3	400	5800	1600	23200	50	1.969	0.189	0.281	001C-04
TFE202K-05	8	5/16"	05	14.8	350	5075	1400	20300	55	2.165	0.22	0.327	001C-05
TFE202K-06	9.5	3/8"	06	17.1	330	4785	1320	19140	65	2.559	0.281	0.418	001C-06
TFE202K-08	12.7	1/2"	08	20.4	275	3988	1100	15950	90	3.543	0.353	0.525	001C-08
TFE202K-10	16	5/8"	10	23.5	250	3625	1000	14500	100	3.937	0.421	0.627	001C-10
TFE202K-12	19	3/4"	12	27.6	215	3118	860	12470	120	4.724	0.526	0.782	001C-12
TFE202K-16	25.4	1"	16	35.8	165	2393	660	9570	150	5.906	0.79	1.176	001C-16

Available with MSHA and Mega cover. In case of order use code TFEY02K and TFEV02K.

# INTERPUMP Hypress R17

## APPLICATIONS :



## TFS0017



## APPLICABLE SPECIFICATIONS

SAE 100R17 - SAE J 517 - ISO 11237 R17

Isobaric pressure rating 210 bar/3000 psi. No skive compact hose.

**Inner tube:** Synthetic rubber, extruded whole without joints, of uniform thickness.

**Reinforcement:** High tensile steel. 1 braid up to size 1/2", 2 braids from size 5/8" onwards.

**Coverage:** Anti-abrasive synthetic rubber, resistant to oils, fuels and atmospheric conditions.

**Recommended fluids:** Mineral and biological oils, glycol-water based, water, lubricants.

**working temperature:** from -40 to +100°C (intermittent 120°C), from -40 to +70° C for water based fluids, from 0 to +70°C water.

Product number	ID		Dimension	OD	Max WP		Min BP		Min BR		Weight (approx)		Ferrule
	in	mm	dash size		bar	psi	bar	psi	mm	inch	lb/ft	kg/m	
TFS0017-03	3/16"	4.8	03	10.5	210	3045	840	12180	40	0.787	0.101	0.15	001C-03
TFS0017-04	1/4"	6.4	04	12.3	210	3045	840	12180	50	1.969	0.124	0.185	001C-04
TFS0017-05	5/16"	7.9	05	13.5	210	3045	840	12180	55	2.165	0.132	0.196	001C-05
TFS0017-06	3/8"	9.5	06	15.7	210	3045	840	12180	65	2.559	0.172	0.256	001C-06
TFS0017-08	1/2"	12.7	08	19.4	210	3045	840	12180	90	3.543	0.254	0.378	001C-08
TFS0017-10	5/8"	16	10	23.5	210	3045	840	12180	100	3.937	0.419	0.624	001C-10
TFS0017-12	3/4"	19	12	27.6	210	3045	840	12180	120	4.724	0.513	0.764	001C-12
TFS0017-16	1"	25.4	16	36.2	210	3045	840	12180	150	5.906	0.829	1.233	001C-16

Available with MSHA and Mega cover. In case of order use code TFSM017 and TFSV017.

**Marking:** Available also embossed brand version. In case of order use code TFS0017N.

# INTERPUMP Hypress FOUR SP

## TSR04SP



### APPLICATIONS :



### APPLICABLE SPECIFICATIONS

IMM SPECS

4 high tensile spiral high flexibility. Performance according EN856 - ISO 3862 4SP.

**Inner tube:** Synthetic rubber, extruded whole without joints, of uniform thickness.

**Reinforcement:** 4 steel wire spirals.

**Coverage:** Anti-abrasive synthetic rubber, resistant to oils, fuels and atmospheric conditions.

**Recommended fluids:** Mineral and biological oils, glycol-water based, water, lubricants.

**working temperature:** from -40 to +100°C (intermittent 120°C), from -40 to +70° C for water based fluids, from 0 to +70°C water.

Product number	ID		Dimension dash size	OD	Max WP		Min BP		Min BR		Weight (approx)		FERRULE TWO PIECES SKIVE
	mm	in			bar	psi	bar	psi	mm	inch	lb/ft	kg/m	
TSR04SP-06	9.5	3/8"	06	19.7	445	6453	1780	25810	180	7.087	0.448	0.667	0S14-06
TSR04SP-08	12.7	1/2"	08	22.5	415	6018	1660	24070	230	9.055	0.522	0.777	0S14-08
TSR04SP-10	16	5/8"	10	26.2	350	5075	1400	20300	250	9.843	0.635	0.945	0S14-10
TSR04SP-12	19	3/4"	12	29.7	350	5075	1400	20300	300	11.811	0.764	1.136	0009-12
TSR04SP-16	25.4	1"	16	36.7	280	4060	1120	16240	340	13.386	1.096	1.631	0009-16
TSR04SP-20	31.8	1.1/4"	20	44.6	210	3045	840	12180	460	18.11	1.440	2.143	004H-20
TSR04SP-24	38.1	1.1/2"	24	51.5	185	2683	740	10730	560	22.047	1.797	2.675	004H-24

Available with MSHA and Mega cover. In case of order use code TSRM4SP and TSVR4SP.

# INTERPUMP Hypress 4SP

## APPLICATIONS :



## TFDM4SP



## APPROVALS :

MED, DNV - GL, BV, MSHA

## APPLICABLE SPECIFICATIONS

EN 856 4SP - ISO 3862 4SP

4 high tensile spiral high flexibility. MSHA cover. Exceeding burst requirements.

**Inner tube:** Synthetic rubber, extruded whole without joints, of uniform thickness.

**Reinforcement:** 4 steel wire spirals.

**Coverage:** Anti-abrasive synthetic rubber, resistant to oils, fuels and atmospheric conditions.

**Recommended fluids:** Hydraulic fluids petroleum based (mineral oils), glycol-water based, water, lubricants.

**working temperature:** from -40 to +100° C petroleum based fluids (Intermittent 120°C), from -40 to +70° C for water based fluids, from 0 to +70°C water.

Product number	ID		Dimension dash size	OD	Max WP		Min BP		Min BR		Weight (approx)		FERRULE	
	mm	in			bar	psi	bar	psi	mm	inch	lb/ft	kg/m	TWO PIECES SKIVE	TWO PIECES NO SKIVE
TFDM4SP-04	6.4	1/4"	04	17.8	450	6525	1800	26100	150	5.906	0.398	0.592	0009-04	-
TFDM4SP-06	9.5	3/8"	06	21.2	445	6453	1780	25810	180	7.087	0.531	0.79	0009-06	-
TFDM4SP-08	12.7	1/2"	08	24.3	415	6018	1660	24070	230	9.055	0.632	0.94	0009-08	-
TFDM4SP-10	16	5/8"	10	28	350	5075	1400	20300	250	9.843	0.756	1.125	0009-10	-
TFDM4SP-12	19	3/4"	12	32	350	5075	1400	20300	300	11.811	1.006	1.497	0009-12	BMC2-12
TFDM4SP-16	25.4	1"	16	39.5	280	4060	1120	16240	340	13.386	1.445	2.15	0009-16	BMC1-16
TFDM4SP-20	31.8	1.1/4"	20	50.8	210	3045	840	12180	460	18.11	2.122	3.157	0009-20	BMC2-20
TFDM4SP-24	38.1	1.1/2"	24	57.2	185	2683	740	10730	560	22.047	2.495	3.713	0009-24	-
TFDM4SP-32	50.8	2"	32	69.8	165	2393	660	9570	660	25.984	3.273	4.87	0009-32	-

**Marking:** Available also embossed brand version. In case of order use code TFDM4SPN.

**ih INTERPUMP** **Hy<sup>press</sup> 4SP** ISO 3862/EN 856 - DN 10 I.D. 3/8" - W.P. 445 BAR/6453

# Hypress UniLock

## TFS0006I



### APPLICATIONS :



### APPLICABLE SPECIFICATIONS

SAE 100R6 - EN 854 1TE

Unilock fittings series, easy assembly, no tools or clamps required. Safety factor 4:1. Do not use for compressed air braking systems and circuits subject to high pressure impulses.

**Inner tube:** Oil resistant synthetic rubber.

**Reinforcement:** 1 textile braid.

**Coverage:** Synthetic rubber resistant to oils, fuels and atmospheric conditions.

**Recommended fluids:** Hydraulic fluids petroleum based (mineral oils), glycol-water based, water, lubricants.

**working temperature:** from -40 to + 100° C petroleum based fluids, from -40 to +70° C for water based fluids, from 0 to +70°C water.

Product number	ID		Dimension	OD	Max WP Std fitting		Max WP UniLock		Min BR		Weight (approx)		Ferrule
	in	mm	dash size		bar	psi	bar	psi	mm	inch	kg/m	lb/ft	
TFS0006I03	3/16"	4.8	03	11.0	34	490	-	-	50	1.969	0.099	0.067	0007-03
TFS0006I04	1/4"	6.4	04	12.5	28	400	28	400	65	2.559	0.1	0.067	0007-04
TFS0006I05	5/16"	8	05	14.1	28	400	* - on request		75	2.953	0.125	0.084	0007-05
TFS0006I06	3/8"	9.5	06	15.7	28	400	28	400	75	2.953	0.15	0.101	0007-06
TFS0006I08	1/2"	12.7	08	19.3	28	400	28	400	100	3.937	0.2	0.134	0007-08
TFS0006I10	5/8"	16	10	23.0	24	350	-	-	125	4.921	0.25	0.168	0007-10
TFS0006I12	3/4"	19	12	26.6	21	300	21	305	150	5.906	0.3	0.202	0007-12
TFS0006I16	1"	25.4	16	32.2	20	290	12	174	135	5.315	0.45	0.302	0007-16

**Marking:** Ink-jet



# Hypress 2TE

## APPLICATIONS :



## TFE02TEI



## APPLICABLE SPECIFICATIONS

EN 854 2TE

Braided hose textile.

**Inner tube:** Oil resistant synthetic rubber.

**Reinforcement:** 2 textile braids.

**Coverage:** Synthetic rubber resistant to oils, fuels and atmospheric conditions.

**Recommended fluids:** Hydraulic fluids petroleum based (mineral oils), glycol-water based, water, lubricants.

**working temperature:** from -40 to +100° C petroleum based fluids, from -40 to +70° C for water based fluids, from 0 to +70°C water.

Product number	ID		Dimension	OD	Max WP		Min BP		Min BR		Weight (approx)		Ferrule
	in	mm	dash size		bar	psi	bar	psi	mm	inch	kg/m	lb/ft	
TFE02TEI03	3/16"	4.8	03	11.8	80	1160	320	4640	35	1.378	0.118	0.079	0003-03
TFE02TEI04	1/4"	6.4	04	13.4	75	1088	300	4350	40	1.575	0.140	0.094	0007-04
TFE02TEI05	5/16"	8	05	14.9	68	986	272	3944	50	1.969	0.154	0.103	0007-05
TFE02TEI06	3/8"	9.5	06	16.5	63	914	252	3654	60	2.362	0.179	0.120	0007-06
TFE02TEI08	1/2"	12.7	08	19.7	58	841	232	3364	70	2.756	0.226	0.152	0007-08
TFE02TEI10	5/8"	16	10	23.9	50	725	200	2900	90	3.543	0.312	0.210	0007-10
TFE02TEI12	3/4"	19	12	27	45	653	180	2610	110	4.331	0.342	0.230	0007-12
TFE02TEI16	1"	25.4	16	34.4	40	580	160	2320	150	5.906	0.483	0.325	0007-16

**Marking:** White ink branded (customization not possible)

# EN 854 3TE

## TFE03TEI



### APPLICATIONS :



### APPLICABLE SPECIFICATIONS

EN 854 3TE

Braided hose textile.

**Inner tube:** Oil resistant synthetic rubber.

**Reinforcement:** Textile braids.

**Coverage:** Synthetic rubber resistant to oils, fuels and atmospheric conditions.

**Recommended fluids:** Biological and mineral oils, glycol-water based, water, lubricants.

**working temperature:** from -40 to +100° C petroleum based fluids, from -40 to +70° C for water based fluids, from 0 to +70°C water.

Product number	ID		Dimension	OD	Max WP		Min BP		Min BR		Weight (approx)		Ferrule
	mm	in	dash size		bar	psi	bar	psi	mm	inch	kg/m	lb/ft	
TFE03TEI03	4.8	3/16"	03	12.8	160	2320	640	9280	40	1.575	0.200	0.134	0003-03
TFE03TEI04	6.4	1/4"	04	14.4	145	2103	580	8410	45	1.772	0.234	0.157	0003-04
TFE03TEI05	8	5/16"	05	16.9	130	1885	520	7540	55	2.165	0.305	0.205	0003-05
TFE03TEI06	9.5	3/8"	06	18.5	110	1595	440	6380	70	2.756	0.352	0.237	0003-06
TFE03TEI08	12.7	1/2"	08	21.7	93	1349	372	5394	85	3.346	0.435	0.292	0003-08
TFE03TEI10	16	5/8"	10	25.9	80	1160	320	4640	105	4.134	0.575	0.386	0003-10
TFE03TEI12	19	3/4"	12	29	70	1015	280	4060	130	5.118	0.625	0.420	0003-12
TFE03TEI16	25.4	1"	16	35.9	55	798	220	3190	150	5.906	0.855	0.575	0003-16

# SAE 100R5

## TFS0005

### APPLICATIONS:



### APPLICABLE SPECIFICATIONS

SAE 100R5

Abrasion resistant textile braid cover. NO -SKIVE solution available.

**Inner tube:** Synthetic rubber, extruded whole without joints, of uniform thickness.

**Reinforcement:** 1 steel wire braid.

**Coverage:** Textile braided cover.

**Recommended fluids:** Hydraulic fluids petroleum based (mineral oils), glycol-water based, water, lubricants.

**working temperature:** from -40 to +100° C petroleum based fluids (Intermittent 120°C), from -40 to +70° C for water based fluids, from 0 to +70°C water.

Product number	ID		SAE size**	OD	Max WP		Min BP		Min BR		Weight (approx)		Ferrule
	mm	in			bar	psi	bar	psi	mm	inch	kg/m	lb/ft	
TFS0005-04	4.8	3/16"	04	13.2	210	3045	840	12180	75	2.953	0.19	0.128	0003-03
TFS0005-05	6.4	1/4"	05	14.8	210	3045	840	12180	85	3.346	0.224	0.151	0003-04
TFS0005-06	7.9	5/16"	06	17.2	157	2277	628	9106	100	3.937	0.283	0.19	0003-05
TFS0005-08	10.3	13/32"	08	19.5	140	2030	560	8120	115	4.528	0.35	0.235	0003-06
TFS0005-10	12.7	1/2"	10	23.4	122	1769	488	7076	140	5.512	0.473	0.318	0003-08
TFS0005-12	15.9	5/8"	12	27.4	105	1523	420	6090	165	6.496	0.617	0.415	0003-10
TFS0005-16	22.2	7/8"	16	31.4	56	812	224	3248	185	7.283	0.57	0.383	0003-12
TFS0005-20	28.6	1.1/8"	20	38.1	43	624	172	2494	230	9.055	0.795	0.534	*
TFS0005-24	34.9	1.3/8"	24	44.5	35	508	140	2030	265	10.433	1.02	0.685	*
TFS0005-32	46	1.13/16"	32	56.4	24	348	96	1392	335	13.189	1.42	0.954	*

\* Ask to our Technical Dept.

**Marking:** White ink branded (customization not possible)

# INTERPUMP Hy-VACUUM - SAE 100R4

## TFS0004



### APPLICATIONS :



### APPLICABLE SPECIFICATIONS

SAE 100R4

Biological oils compatibility - High Ozone Resistance - Half Bend Radius

**Inner tube:** Oil resistant synthetic rubber.

**Reinforcement:** 2 textile braids + 1 spiral braid.

**Coverage:** Synthetic rubber resistant to oils, fuels and atmospheric conditions.

**Recommended fluids:** Hydraulic fluids petroleum based, glycol-water based, lubricants.

**working temperature:** from -40 to +100°C continuous +70°C for water based fluids

Product number	ID		Dimension	OD	Max WP		Min BP		Min BR		vacuum	Weight (approx)		Ferrule
	in	mm	dash size		bar	psi	bar	psi	mm	inch		bar	kg/m	
TFS0004-12	3/4"	19	12	29	21	315	84	1260	60	2.4	0.9	0.61	0.41	012N-12
TFS0004-16	1"	25	16	35	17	255	68	1020	75	3.0	0.9	0.75	0.51	012N-16
TFS0004-20	1.1/4"	32	20	42	14	210	56	840	100	3.9	0.9	0.92	0.62	012N-20
TFS0004-24	1.1/2"	38	24	48.5	10.5	158	42	630	127	5.0	0.9	1.14	0.77	012N-24
TFS0004-32	2"	51	32	63	7	105	28	420	150	5.9	0.9	1.81	1.21	012N-32
TFS0004-40	2.1/2"	63.5	40	76	4	60	16	240	178	7.0	0.9	2.43	1.64	012N-40
TFS0004-48	3"	76	48	89	4	60	16	240	230	9.1	0.9	2.99	2.01	012N-48

**Marking:** Available only "mylar"

HIGH PERFORMANCE

in!



**TFDH011B**



INTERPUMP HyCelsius  
15N

19

**TFDH021B**



INTERPUMP HyCelsius  
25N

20

**TFDL012N**



jp'kj

21

**TFDL022N**



INTERPUMP HyFreeze  
25N

22

**TFE2PF2**



INTERPUMP PilotFlex 120

23

**TFE2P15**



INTERPUMP Pilot Plus  
150

24

**THE201K**



INTERPUMP LongLife 15C

25

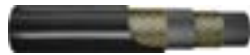
**THE202K**



INTERPUMP LongLife  
25C

26

**THE2M2K**



INTERPUMP MARATHON  
25C

27

**THE0T3K**



INTERPUMP  
TREEATHLON

28

**TFDR4SH**



INTERPUMP HyGreen  
45H

29

**TFDR013**



INTERPUMP HyGreen R13

30

**TFDR015**



INTERPUMP HyGreen R15

31

# INTERPUMP HyCelsius 1SN

## APPLICATIONS :



## TFDH011B



## APPLICABLE SPECIFICATIONS

EN 853 1SN SAE 100R1AT

Wide range temperature resistance. Hoses are not designed and not approved for "air brake" applications on railway and/or mobile equipment. Do not use with compressor.

**Inner tube:** Synthetic rubber, extruded whole without joints, of uniform thickness.

**Reinforcement:** 1 steel wire braid.

**Coverage:** Anti-abrasive synthetic rubber, resistant to oils, fuels and atmospheric conditions.

**Recommended fluids:** Mineral and biological oils, glycol-water based, water, lubricants.

**working temperature:** from -40 to +135°C (intermittent 140°C).

Product number	ID		Dimension dash size	OD	Max WP		Min BP		Min BR		Weight (approx)		Ferrule
	in	mm			bar	psi	bar	psi	mm	inch	kg/m	lb/ft	
TFDH011B04	1/4"	6.4	04	13.4	225	3263	900	13050	100	3.937	0,225	0.151	0001-04
TFDH011B05	5/16"	8	05	15	215	3118	860	12325	115	4.528	0,252	0.169	0001-05
TFDH011B06	3/8"	9.5	06	17.4	180	2610	720	10440	130	5.118	0,337	0.226	0001-06
TFDH011B08	1/2"	12.7	08	20.6	160	2320	640	9280	180	7.087	0,404	0.271	0001-08
TFDH011B10	5/8"	16	10	23.7	130	1885	520	7540	200	7.874	0,476	0.32	0001-10
TFDH011B12	3/4"	19	12	27.7	105	1523	420	6090	240	9.449	0,601	0.404	0001-12
TFDH011B16	1 "	25.4	16	35.6	88	1276	352	5075	300	11.811	0,903	0.607	0001-16
TFDH011B20	1.1/4"	31.8	20	43.5	63	914	252	3625	420	16.535	1,272	0.855	0001-20
TFDH011B24	1.1/2"	38.1	24	50.8	50	725	200	2900	500	19.685	1,596	1.073	0001-24
TFDH011B32	2 "	50.8	32	63.6	40	580	160	2320	630	24.803	2,222	1.493	0001-32
TFDH011B40	2.1/2"	63.5	40	77.4	30	435	120	1741	760	29.921	2,755	1.851	0001-40

Available also with black cover. In case of order use TFDH011N.

**Marking:** Available only "embossed"

# INTERPUMP HyCelsius 2SN

## TFDH021B



### APPLICATIONS :



### APPLICABLE SPECIFICATIONS

EN 853 2SN - SAE 100R2AT

Wide range temperature resistance. Hoses are not designed and not approved for "air brake" applications on railway and/or mobile equipment. Do not use with compressor.

**Inner tube:** Synthetic rubber, extruded whole without joints, of uniform thickness.

**Reinforcement:** 2 high tensile steel wire braids.

**Coverage:** Anti-abrasive synthetic rubber, resistant to oils, fuels and atmospheric conditions.

**Recommended fluids:** Mineral and biological oils, glycol-water based, water, lubricants.

**working temperature:** from -40 to +135°C (intermittent 140°C).

Product number	ID		Dimension dash size	OD	Max WP		Min BP		Min BR		Weight (approx)		Ferrule
	in	mm			psi	bar	bar	psi	mm	inch	kg/m	lb/ft	
TFDH021B04	1/4"	6.4	04	15	5800	400	1600	23200	100	3.937	0.357	0.24	0002-04
TFDH021B05	5/16"	8	05	16.6	5075	350	1400	20300	115	4.528	0.413	0.278	0002-05
TFDH021B06	3/8"	9.5	06	19	4785	330	1320	19140	130	5.118	0.521	0.35	0002-06
TFDH021B08	1/2"	12.7	08	22.2	3988	275	1100	15950	180	7.087	0.616	0.414	0002-08
TFDH021B10	5/8"	16	10	25.4	3625	250	1000	14500	200	7.874	0.749	0.503	0002-10
TFDH021B12	3/4"	19	12	29.3	3118	215	850	12325	240	9.449	0.920	0.618	0002-12
TFDH021B16	1"	25.4	16	38.1	2393	165	650	9425	300	11.811	1.375	0.924	0002-16
TFDH021B20	1.1/4"	31.8	20	48.3	1813	125	500	7250	420	16.535	2.035	1.368	0002-20
TFDH021B24	1.1/2"	38.1	24	54.6	1305	90	360	5220	500	19.685	2.3	1.546	0002-24
TFDH021B32	2"	50.8	32	66.9	1160	80	320	4640	630	24.803	3.16	2.124	0002-32

Available also with black cover. In case of order use TFDH021N.

**Marking:** Available only "embossed"

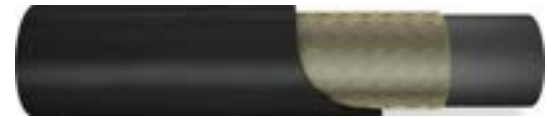


# INTERPUMP HyFreeze 1SN

## APPLICATIONS:



## TFDL012N



## APPLICABLE SPECIFICATIONS

EN 853 1SN - SAE 100R1AT

Suitable for very cold environments.

**Inner tube:** Synthetic rubber, extruded whole without joints, of uniform thickness.

**Reinforcement:** 1 steel wire braid.

**Coverage:** Anti-abrasive synthetic rubber, resistant to oils, fuels and atmospheric conditions.

**Recommended fluids:** Mineral and biological oils, glycol-water based, water, lubricants.

**working temperature:** from -40 to +100°C, min. external temperature -50°C.

Product number	ID		Dimension dash size	OD	Max WP		Min BP		Min BR		Weight (approx)		Ferrule
	in	mm			psi	bar	bar	psi	mm	inch	kg/m	lb/ft	
TFDL012N04	1/4"	6.4	04	12.8	3263	225	900	13052	100	3.937	0.198	0.133	001C-04
TFDL012N05	5/16"	8	05	14.4	3118	215	860	12472	115	4.528	0.237	0.159	001C-05
TFDL012N06	3/8"	9.5	06	16.9	2610	180	720	10440	130	5.118	0.301	0.202	001C-06
TFDL012N08	1/2"	12.7	08	19.9	2320	160	640	9280	180	7.087	0.361	0.242	001C-08
TFDL012N10	5/8"	16	10	23.1	1885	130	520	7540	200	7.874	0.456	0.305	001C-10
TFDL012N12	3/4"	19	12	27.2	1523	105	420	6092	240	9.449	0.574	0.384	001C-12
TFDL012N16	1"	25.4	16	35.2	1276	88	352	5104	300	11.811	0.848	0.568	001C-16

**Marking:** Available only "embossed"

# INTERPUMP HyFreeze 2SN

## TFDLO22N



### APPLICATIONS :



### APPLICABLE SPECIFICATIONS

EN 853 2SN - SAE 100R2AT

Suitable for very cold environments.

**Inner tube:** Synthetic rubber, extruded whole without joints, of uniform thickness.

**Reinforcement:** 2 high tensile steel wire braids.

**Coverage:** Anti-abrasive synthetic rubber, resistant to oils, fuels and atmospheric conditions.

**Recommended fluids:** Mineral and biological oils, glycol-water based, water, lubricants.

**working temperature:** from -40 to +100°C, min. external temperature -50°C.

Product number	ID		Dimension dash size	OD	Max WP		Min BP		Min BR		Weight (approx)		Ferrule
	in	mm			bar	psi	bar	psi	mm	inch	kg/m	lb/ft	
TFDLO22N04	1/4"	6.4	04	14.3	400	5800	1600	23200	100	3.937	0.323	0.216	0022-04
TFDLO22N05	5/16"	8	05	15.9	350	5075	1400	20300	115	4.528	0.380	0.254	0022-05
TFDLO22N06	3/8"	9.5	06	18.5	330	4785	1320	19200	130	5.118	0.474	0.317	0022-06
TFDLO22N08	1/2"	12.7	08	21.5	275	3988	1100	15952	180	7.087	0.561	0.376	0022-08
TFDLO22N10	5/8"	16	10	24.7	250	3625	1000	14500	200	7.874	0.623	0.437	0022-10
TFDLO22N12	3/4"	19	12	28.8	215	3118	860	12472	240	9.449	0.850	0.569	0022-12
TFDLO22N16	1"	25.4	16	37.2	165	2393	660	9572	300	11.811	1.279	0.856	0022-16
TFDLO22N20	1.1/4"	31.8	20	46.5	125	1813	500	7250	420	16.535	1.855	1.242	0022-20
TFDLO22N24	1.1/2"	38.1	24	53.1	90	1305	360	5220	500	19.685	2.015	1.349	0022-24
TFDLO22N32	2"	50.8	32	65.8	80	1160	320	4640	630	24.803	2.690	1.800	0022-32

**Marking:** Available only "embossed"

# INTERPUMP PilotFlex 120

## APPLICATIONS :



## TFE2PF2



## APPLICABLE SPECIFICATIONS

IMM specification

Smooth cover with high abrasion resistance. User friendly and Easy to Handle configuration. Extreme compactness and flexibility with the lowest bend radius. Tested up 1.000.000 cycles. Safety factor 4:1.

**Inner tube:** Synthetic rubber, extruded whole without joints, of uniform thickness.

**Reinforcement:** 1 high tensile steel wire braid.

**Coverage:** Smooth synthetic rubber, resistant to oils, fuels and atmospheric conditions.

**Recommended fluids:** Mineral and biological oils, glycol-water based, water, lubricants.

**working temperature:** from -40 to +100°C (intermittent 120°C), from -40 to +70° C for water based fluids, from 0 to +70°C water.

Product number	ID		Dimension	OD	Max WP		Min BP		Min BR		Weight (approx)		Ferrule
	in	mm	dash size		bar	psi	bar	psi	mm	inch	kg/m	lb/ft	
TFE2PF2-03	3/16"	4.8	03	9.0	120	1750	480	7000	20	0.787	0.10	0.067	0007-03
TFE2PF2-04	1/4"	6.4	04	10.7	120	1750	480	7000	25	0.984	0.13	0.087	001C-04
TFE2PF2-05	5/16"	8.0	05	13.0	120	1750	480	7000	30	1.181	0.19	0.130	001C-05

Size 03 and 04 available with reduced fittings 001C-03SW and 001C-04SW / 0350-03-02SW and 0350-04-02SW.

**Marking:** Available only "mylar"

# INTERPUMP Pilot Plus 150

## TFE2P15



### APPLICATIONS :



### APPLICABLE SPECIFICATIONS

IMM specification

Lightweight. Compact design. High flexibility. Tested up 1.000.000 impulse cycles at rated working pressure.

**Inner tube:** Synthetic rubber, extruded whole without joints, of uniform thickness.

**Reinforcement:** 1 high tensile steel wire braid.

**Coverage:** Smooth synthetic rubber, resistant to oils, fuels and atmospheric conditions.

**Recommended fluids:** Mineral and biological oils, glycol-water based, water, lubricants.

**working temperature:** from -40 to +120°C (intermittent 135°C), from -40 to +70° C for water based fluids, from 0 to +70°C water.

Product number	ID		Dimension	OD	Max WP		Min BP		Min BR		Weight (approx)		Ferrule
	in	mm	dash size		bar	psi	bar	psi	mm	inch	kg/m	lb/ft	
TFE2P15-03	3/16"	4.8	03	10.5	150	2175	600	8700	20	0.787	0.15	0.101	001C-03
TFE2P15-04	1/4"	6.4	04	11.5	150	2175	600	8700	25	0.984	0.163	0.109	001C-04
TFE2P15-05	5/16"	8	05	13.1	150	2175	600	8700	30	1.181	0.193	0.13	001C-05
TFE2P15-06	3/8"	9.5	06	14.8	150	2175	600	8700	40	1.575	0.224	0.15	001C-06
TFE2P15-08	1/2"	12.7	08	17.5	150	2175	600	8700	50	1.969	0.251	0.168	001C-08

Available with MSHA and Mega cover. In case of order use code TFEYP215 and TFEVP15.

**Marking:** Available only "mylar"

# INTERPUMP LongLife 1SC

## APPLICATIONS :



## THE201K



## APPROVALS :

MED, RINA, BV, LLOYD'S, NKK, KR, DNV

## APPLICABLE SPECIFICATIONS

exceed EN 857 1SC- ISO 11237 1SC

No-SKIVE hose. High abrasion resistance. Pressure rating exceeding standards. Easy to install. SMOOTH COVER up to 1".

**Inner tube:** Synthetic rubber, extruded whole without joints, of uniform thickness.

**Reinforcement:** 1 high tensile steel wire braids.

**Coverage:** Anti-abrasive synthetic rubber, resistant to oils, fuels and atmospheric conditions.

**Recommended fluids:** Mineral and biological oils, glycol-water based, water, lubricants.

**working temperature:** from -40 to +120°C (intermittent 135°C), from -40 to +70° C for water based fluids, from 0 to +70°C water.

Product number	ID		Dimension dash size	OD	Max WP		Min BP		Min BR		Weight (approx)		Ferrule
	in	mm			bar	psi	bar	psi	mm	inch	kg/m	lb/ft	
THE201K-04	1/4"	6.4	04	12.3	250	3625	1120	16240	50	1.969	0.182	0.122	001C-04
THE201K-05	5/16"	8	05	13.5	250	3625	1000	14500	55	2.165	0.21	0.141	001C-05
THE201K-06	3/8"	9.5	06	15.7	250	3625	1000	14500	60	2.362	0.248	0.167	001C-06
THE201K-08	1/2"	12.7	08	18.9	200	2900	800	11600	70	2.756	0.391	0.263	001C-08
THE201K-10	5/8"	16	10	22.4	150	2175	600	8700	90	3.543	0.41	0.276	001C-10
THE201K-12	3/4"	19	12	26	150	2175	600	8700	100	3.937	0.534	0.359	001C-12
THE201K-16	1"	25.4	16	33.7	110	1595	440	6380	180	7.087	0.742	0.499	001C-16
THE201K-20	1.1/4"	31.8	20	41.1	100	1450	400	5800	210	8.268	1.11	0.746	001C-20
THE201K-24	1.1/2"	38.1	24	48.6	90	1305	360	5220	300	11.811	1.39	0.934	001C-24
THE201K-32	2"	50.8	32	61.5	75	1088	300	4350	400	15.748	1.94	1.304	001C-32
THE201K-40	2.1/2"	63.5	40	73.5	50	725	200	2900	700	29.134	2.22	1.492	001C-40
THE201K-48	3"	76.2	48	86	40	580	160	2320	860	33.858	2.315	1.556	001C-48

Available with MSHA and Mega cover. In case of order use code THEY01K and THEV01K.

**Marking:** Available only "mylar"

# INTERPUMP LongLife 2SC

## THE202K



### APPLICATIONS :



### APPROVALS :

MED, RINA, BV, LLOYD'S, ABS, NKK, KR, DNV, CCS

### APPLICABLE SPECIFICATIONS

exceed EN 857 2SC - ISO 11237

No-SKIVE hose. High abrasion resistance. Pressure rating exceeding standards. Tested up to 1.000.000 cycles up to 1". Easy to install. SMOOTH COVER up to 1".

**Inner tube:** Synthetic rubber, extruded whole without joints, of uniform thickness.

**Reinforcement:** 2 high tensile steel wire braids.

**Coverage:** Anti-abrasive synthetic rubber, resistant to oils, fuels and atmospheric conditions.

**Recommended fluids:** Mineral and biological oils, glycol-water based, water, lubricants.

**working temperature:** from -40 to +120°C (intermittent 135°C), from -40 to +70° C for water based fluids, from 0 to +70°C water.

Product number	ID		Dimension dash size	OD	Max WP		Min BP		Min BR		Weight (approx)		Ferrule
	in	mm			bar	psi	bar	psi	mm	inch	kg/m	lb/ft	
THE202K-04	1/4"	6.4	04	13.3	430	6235	1720	24940	50	1.969	0.283	0.19	001C-04
THE202K-05	5/16"	8	05	14.8	400	5800	1600	23200	60	2.362	0.324	0.218	001C-05
THE202K-06	3/8"	9.5	06	17.1	350	5075	1400	20300	70	2.756	0.418	0.281	001C-06
THE202K-08	1/2"	12.7	08	20.4	310	4495	1240	17980	80	3.15	0.521	0.35	001C-08
THE202K-10	5/8"	16	10	23.5	280	4060	1120	16240	100	3.937	0.626	0.421	001C-10
THE202K-12	3/4"	19	12	27.6	240	3480	960	13920	120	4.724	0.764	0.513	001C-12
THE202K-16	1"	25.4	16	35.8	210	3045	840	12180	160	6.299	1.171	0.787	001C-16
THE202K-20	1.1/4"	31.8	20	43.1	160	2320	640	9280	250	9.843	1.53	1.028	001C-20
THE202K-24	1.1/2"	38.1	24	50.6	150	2175	600	8700	260	10.236	2.12	1.425	001C-24
THE202K-32	2"	50.8	32	63.5	100	1450	400	5800	360	14.173	2.795	1.878	001C-32
THE202K-40	2.1/2"	63.5	40	75.6	80	1160	320	4640	600	23.622	3.224	2.167	001C-40
THE202K-48	3"	76.2	48	88	65	943	260	3770	760	29.921	3.471	2.333	001C-48

Available with MSHA and Mega cover. In case of order use code THE02K and THEV02K.

**Marking:** Available only "mylar"

# INTERPUMP MARATHON 2SC

## APPLICATIONS:



## THE2M2K



## APPLICABLE SPECIFICATIONS

IMM - exceed EN 857 2SC - ISO 11237 2SC

NO-SKIVE hose. Exceed EN specification. Impulse tested up to 1.000.000 cycles.

**Inner tube:** Synthetic rubber, extruded whole without joints, of uniform thickness.

**Reinforcement:** 2 high tensile steel wire braids.

**Coverage:** Smooth synthetic rubber, resistant to oils, fuels and atmospheric conditions.

**Recommended fluids:** Mineral and biological oils, glycol-water based, water, lubricants.

**working temperature:** from -40 to +120°C (intermittent 135°C), from -40 to +70° C for water based fluids, from 0 to +70°C water.

Product number	ID		Dimension dash size	OD	Max WP		Min BP		Min BR		Weight (approx)		Ferrule
	in	mm			bar	psi	bar	psi	mm	inch	kg/m	lb/ft	
THE2M2K-04	1/4"	6.4	04	13.3	450	6525	1800	26100	50	1.969	0.285	0.192	001C-04
THE2M2K-05	5/16"	8	05	14.8	420	6090	1680	24360	60	2.362	0.33	0.222	001C-05
THE2M2K-06	3/8"	9.5	06	17.1	385	5582	1540	22330	70	2.756	0.422	0.284	001C-06
THE2M2K-08	1/2"	12.7	08	20.4	350	5075	1500	21750	80	3.15	0.566	0.349	001C-08
THE2M2K-10	5/8"	16	10	23.5	350	5075	1400	20300	90	3.543	0.665	0.447	001C-10
THE2M2K-12	3/4"	19	12	27.6	280	4060	1120	16240	120	4.725	0.865	0.531	001C-12
THE2M2K-16	1"	25.4	16	36	250	3625	1000	14500	140	5.512	1.39	0.934	0022-16

Impulse tested according to EN857 2SC for dash -10 and -16. Available with MSHA and Mega cover. In case of order use code THEYM2K and THEVM2K.

# INTERPUMP TREEATHLON

## THEOT3K



### APPLICATIONS :



### APPLICABLE SPECIFICATIONS

IMM SPECS

Compact hose. NO-SKIVE construction. NBR tube compound compatible with several fluids. Approved up to 500.000 impulse cycles. Tested at 120% Max WP.

**Inner tube:** Synthetic rubber, extruded whole without joints, of uniform thickness.

**Reinforcement:** 3 high tensile steel wire braids.

**Coverage:** Anti-abrasive synthetic rubber, resistant to oils, fuels and atmospheric conditions.

**Recommended fluids:** Mineral and biological oils, glycol-water based, water, lubricants.

**working temperature:** from -40 to + 100° C petroleum based fluids (Intermittent 120°C), from -40 to +70° C for water based fluids, from 0 to +70°C water.

Product number	ID		Dimension dash size	OD	Max WP		Min BP		Min BR		Weight (approx)		Ferrule
	in	mm			bar	psi	bar	psi	mm	inch	kg/m	lb/ft	
THEOT3K-06	3/8"	9.5	06	18.8	500	7250	2000	29000	110	4.331	0.584	0.392	0022-06
THEOT3K-08	1/2"	12.7	08	22.4	475	6888	1900	27550	140	5.512	0.833	0.560	0022-08
THEOT3K-10	5/8"	16	10	25.8	420	6090	1680	24360	200	7.874	0.967	0.650	0022-10
THEOT3K-12	3/4"	19	12	29.6	380	5510	1520	22040	240	9.449	1.189	0.799	0022-12
THEOT3K-16	1"	25.4	16	38.0	315	4568	1260	18270	300	11.811	1.737	1.167	0022-16

Available with MSHA and Mega cover. In case of order use code THEMT3K and THEVT3K.

Marking: -



# INTERPUMP HyGreen 4SH

## APPLICATIONS :



## TFDR4SH



## APPROVALS :

DNV - GL, BV, LLOYD'S, ABS, NKK, KR, MED

## APPLICABLE SPECIFICATIONS

EXCEED EN 856 4SH - ISO 3862 4SH

Biological oils compatibility. Exceed EN standard. Impulse tested up to 1.000.000 impulse cycles. High ozone and abrasion resistance.

**Inner tube:** Synthetic rubber, extruded whole without joints, of uniform thickness.

**Reinforcement:** 4 steel wire spirals.

**Coverage:** Anti-abrasive synthetic rubber, resistant to oils, fuels and atmospheric conditions. MSHA Cover.

**Recommended fluids:** Mineral and biological oils, glycol-water based, water, lubricants, compressed air  
**working temperature:** from -40 to +100°C (intermittent 120°C), da -40 a +70°C per fluidi a base acqua e aria compressa, da 0 a +70°C acqua.

Product number	ID		Dimension dash size	OD	Max WP		Min BP		Min BR		Weight (approx)		Ferrule
	mm	in			bar	psi	bar	psi	mm	inch	lb/ft	kg/m	
TFDR4SH-12	19	3/4"	12	32	420	6090	1780	25810	210	8.268	1.056	1.572	004N-12/X Series
TFDR4SH-16	25.4	1"	16	38.4	385	5583	1750	25375	220	8.661	1.414	2.104	004N-16/X Series
TFDR4SH-20	31.8	1.1/4"	20	45.8	350	5075	1400	20300	400	15.748	1.714	2.550	004N-20/X Series
TFDR4SH-24	38.1	1.1/2"	24	53.5	300	4350	1250	18125	560	22.047	2.167	3.225	004N-24/X Series
TFDR4SH-32	50.8	2"	32	68	250	3625	1000	14500	700	27.559	3.091	4.600	004N-32/X Series

Available also in NON-MSHA version. In case of order use code TFDG4SH.

**Marking:** Available also embossed brand version. In case of order use code TFDR4SHN.

# INTERPUMP HyGreen R13

## TFDR013



### APPLICATIONS :



### APPROVALS :

DNV - GL, BV, LLOYD'S, ABS, NKK, KR, MED

### APPLICABLE SPECIFICATIONS

EXCEED EN 856 SAE 100R13 - ISO 3862 R13

Isobaric line 5000 psi. Impulse tested up to 1.000.000 impulse cycles. Biological oil compatibility.

**Inner tube:** Synthetic rubber, extruded whole without joints, of uniform thickness.

**Reinforcement:** 4 high tensile steel wire spiral up to size 1", 6 spiral from size 1,1/4".

**Coverage:** Anti-abrasive synthetic rubber, resistant to oils, fuels and atmospheric conditions. MSHA cover.

**Recommended fluids:** Mineral and biological oils, glycol-water based, water, lubricants, compressed air  
**working temperature:** from -40 to + 121° C (Intermittent 125°C) da -40 a +70°C per fluidi a base acqua e aria compressa, da 0 a +70°C acqua.

Product number	ID		Dimension	OD	Max WP		Min BP		Min BR		Weight (approx)		Ferrule
	in	mm	dash size		bar	psi	bar	psi	mm	inch	kg/m	lb/ft	
TFDR013-12	3/4"	19	12	32.1	350	5075	1920	27840	120	4.725	1.641	1.103	004N-12/X Series
TFDR013-16	1"	25.4	16	38.7	350	5075	1660	24070	150	5.905	2.106	1.415	0013-16/X Series
TFDR013-20	1.1/4"	31.8	20	49.7	350	5075	1520	22040	210	8.248	3.891	2.615	0013-20/X Series
TFDR013-24	1.1/2"	38.1	24	57.8	350	5075	1600	23200	310	12.205	5.210	3.501	0013-24/X Series
TFDR013-32	2"	50.8	32	71.5	350	5075	1500	21750	590	23.228	6.840	4.596	0013-32/X Series

Available also in NON-MSHA version. In case of order use code TFDG013.

**Marking:** Available also embossed brand version. In case of order use code TFDR013N.

# INTERPUMP HyGreen R15

## APPLICATIONS :



## TFDR015



## APPROVALS :

MED, DNV - GL, BV, LLOYD'S, ABS, NKK, KR

## APPLICABLE SPECIFICATIONS

EXCEED SAE 100R15 - ISO 3862

Biological oils compatibility. Exceed EN standard. Impulse tested up to 1.000.000 impulse cycles.

**Inner tube:** Synthetic rubber, extruded whole without joints, of uniform thickness.

**Reinforcement:** 4 high tensile steel wire spiral up to size 1", 6 spiral from size 1,1/4.

**Coverage:** Abrasion resistant synthetic rubber resistant to oils, fuels, atmospheric conditions. MSHA.

**Recommended fluids:** Mineral and biological oils, glycol-water based, water, lubricants, compressed air  
**working temperature:** from -40 to + 121° C (Intermittent 125°C) da -40 a +70°C per fluidi a base acqua e aria compressa, da 0 a +70°C acqua.

Product number	ID		Dimension	OD	Max WP		Min BP		Min BR		Weight (approx)		Ferrule
	in	mm	dash size		bar	psi	bar	psi	mm	inch	kg/m	lb/ft	
TFDR015-10	5/8"	16.7	10	26.8	420	6090	1750	25375	150	5.901	0.705	0.474	0013-10
TFDR015-12	3/4"	19	12	32.0	420	6090	1750	25375	210	8.268	1.573	1.057	004N-12/X Series
TFDR015-16	1"	25.4	16	38.7	420	6090	1700	24650	240	9.449	2.116	1.422	0013-16/X Series
TFDR015-20	1.1/4"	31.8	20	49.7	420	6090	1680	24360	265	10.433	3.891	2.615	0013-20/X Series
TFDR015-24	1.1/2"	38.1	24	57.8	420	6090	1680	24360	310	12.205	5.182	3.482	0013-24/X Series
TFDR015-32	2"	50.8	32	72.0	420	6090	1680	24360	590	23.228	6.892	4.631	0013-32/X Series

Available also in NON-MSHA version. In case of order use code TFDG015.

**Marking:** Available also embossed brand version. In case of order use code TFDR015N.

HYSOBARIC LINE

in



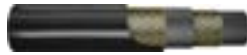
**TIB2021**



INTERPUMP HySO-FLEX  
3K WB

**34**

**TIB2028**



INTERPUMP HySO-FLEX  
4K WB

**35**

**TIB2035**



INTERPUMP HySO-FLEX  
5K WB

**36**

**TIB2042**



INTERPUMP HySO-FLEX  
6K WB

**37**

**TIS0021**



INTERPUMP HySO-FLEX  
3K WS

**38**

**TIS0028**



INTERPUMP HySO-FLEX  
4K WS

**39**

**TIS0035**



INTERPUMP HySO-FLEX  
5K WS

**40**

**TIS0042**



INTERPUMP HySO-FLEX  
6K WS

**41**

# INTERPUMP HySO-FLEX 3K WB

## TIB2021



### APPLICATIONS :



### APPLICABLE SPECIFICATIONS

Eccede SAE 100R17, ISO 11237, ISO 18752/CC

High Flexibility and Half Bend Radius. Qualification according ISO 18752/CC.

**Inner tube:** Synthetic rubber, extruded whole without joints, of uniform thickness.

**Reinforcement:** 1-2 high-load steel wire braids.

**Coverage:** Anti-abrasive synthetic rubber, resistant to oils, fuels and atmospheric conditions.

**Recommended fluids:** Mineral and biological oils, glycol-water based, water, lubricants.

**working temperature:** from -40 to +120°C for oils, from -40 to +70° C for water based fluids, from 0 to +70°C water.

Product number	ID		Dimension	OD	Max WP		Min BP		Min BR		Weight (approx)		Ferrule
	in	mm	dash size		bar	psi	bar	psi	mm	inch	lb/ft	kg/m	
TIB2021-04	1/4"	6.4	04	12.3	225	3263	900	13050	50	1.969	0.120	0.178	001C-04
TIB2021-05	5/16"	7.9	05	13.5	225	3263	900	13050	55	2.165	0.135	0.201	001C-05
TIB2021-06	3/8"	9.5	06	15.7	225	3263	900	13050	60	2.362	0.172	0.256	001C-06
TIB2021-08	1/2"	12.7	08	20.0	210	3045	840	12180	70	2.756	0.312	0.464	001C-08
TIB2021-10	5/8"	15.9	10	23.5	210	3045	840	12180	100	3.937	0.410	0.610	001C-10
TIB2021-12	3/4"	19	12	27.7	210	3045	840	12180	120	4.724	0.536	0.798	001C-12
TIB2021-16	1"	25.4	16	35.8	210	3045	840	12180	160	6.299	0.786	1.170	001C-16

Available with MSHA and Mega cover. In case of order use code TIBY021 and TIBV021.

# INTERPUMP HySO-FLEX 4K WB

## APPLICATIONS:



## TIB2028



## APPLICABLE SPECIFICATIONS

Exceeds ISO 18752/CC

High Flexibility and Half Bend Radius. Qualification according ISO 18752/CC.

**Inner tube:** Synthetic rubber, extruded whole without joints, of uniform thickness.

**Reinforcement:** 2 high tensile steel wire braids.

**Coverage:** Synthetic rubber resistant to oils, fuels and atmospheric conditions.

**Recommended fluids:** Mineral and biological oils, glycol-water based, water, lubricants.

**working temperature:** from -40 to +120°C (intermittent 135°C), from -40 to +70° C for water based fluids, from 0 to +70°C water.

Product number	ID		Dimension dash size	OD	Max WP		Min BP		Min BR		Weight (approx)		Ferrule
	in	mm			bar	psi	bar	psi	mm	inch	kg/m	lb/ft	
TIB2028-04	1/4"	6.4	04	13.3	280	4060	1120	16240	50	1.969	0.281	0.189	001C-04
TIB2028-06	3/8"	9.5	06	17.1	280	4060	1120	16240	70	2.756	0.418	0.281	001C-06
TIB2028-08	1/2"	12.7	08	20.4	280	4060	1120	16240	90	3.543	0.525	0.353	001C-08
TIB2028-10	5/8"	16	10	23.5	290	4205	1160	16820	100	3.937	0.626	0.421	001C-10
TIB2028-12	3/4"	19	12	27.6	280	4060	1120	16240	120	4.724	0.865	0.581	001C-12

Available with MSHA and Mega cover. In case of order use code TIBY028 and TIBV028.

# INTERPUMP HySO-FLEX 5K WB

## TIB2035



### APPLICATIONS :



### APPLICABLE SPECIFICATIONS

Exceeds ISO 18752/CC

High Flexibility and Half Bend Radius. Qualification according ISO 18752/CC.

**Inner tube:** Synthetic rubber, extruded whole without joints, of uniform thickness.

**Reinforcement:** 2 high tensile steel wire braids.

**Coverage:** Smooth synthetic rubber, resistant to oils, fuels and atmospheric conditions.

**Recommended fluids:** Mineral and biological oils, glycol-water based, water, lubricants.

**working temperature:** from -40 to +120°C (intermittent 135°C), from -40 to +70° C for water based fluids, from 0 to +70°C water.

Product number	ID		Dimension dash size	OD	Max WP		Min BP		Min BR		Weight (approx)		Ferrule
	in	mm			bar	psi	bar	psi	mm	inch	kg/m	lb/ft	
TIB2035-04	1/4"	6.4	04	13.3	350	5075	1400	20300	50	1.969	0.281	0.189	001C-04
TIB2035-06	3/8"	9.5	06	17.1	350	5075	1400	20300	70	2.756	0.418	0.281	001C-06
TIB2035-08	1/2"	12.7	08	20.4	350	5075	1400	20300	80	3.150	0.566	0.380	001C-08

Available with MSHA and Mega cover. In case of order use code TIBY035 and TIBV035.



# INTERPUMP HySO-FLEX 6K WB

## APPLICATIONS:



## TIB2042



## APPLICABLE SPECIFICATIONS

Exceeds ISO 18752/CC

High Flexibility and Half Bend Radius. Qualification according ISO 18752/CC.

**Inner tube:** Synthetic rubber, extruded whole without joints, of uniform thickness.

**Reinforcement:** 2 high tensile steel wire braids.

**Coverage:** Smooth synthetic rubber, resistant to oils, fuels and atmospheric conditions.

**Recommended fluids:** Mineral and biological oils, glycol-water based, water, lubricants.

**working temperature:** from -40 to +120°C (intermittent 135°C), from -40 to +70° C for water based fluids, from 0 to +70°C water.

Product number	ID		Dimension	OD	Max WP		Min BP		Min BR		Weight (approx)		Ferrule
	in	mm	dash size		bar	psi	bar	psi	mm	inch	kg/m	lb/ft	
TIB2042-04	1/4"	6.4	04	13.3	420	6090	1680	24360	50	1.969	0.285	0.189	001C-04

Available with MSHA and Mega cover. In case of order use code TIBY042 and TIBV042.

# INTERPUMP HySO-FLEX 3K WS

## TIS0021



### APPLICATIONS :



### APPLICABLE SPECIFICATIONS

Exceeds ISO 18752/CC

High Flexibility and Half Bend Radius. Qualification according ISO 18752/CC.

**Inner tube:** Synthetic rubber, extruded whole without joints, of uniform thickness.

**Reinforcement:** 4 steel wire spirals

**Coverage:** Anti-abrasive synthetic rubber, resistant to oils, fuels and atmospheric conditions.

**Recommended fluids:** Mineral and biological oils, glycol-water based, water, lubricants.

**working temperature:** from -40 to +120°C for oils, from -40 to +70° C for water based fluids, from 0 to +70°C water.

Product number	ID		Dimension	OD	Max WP		Min BP		Min BR		Weight (approx)		Ferrule	One piece	FERRULE	
	in	mm	dash size		bar	psi	bar	psi	mm	inch	lb/ft	kg/m		Fitting series	TWO PIECES NO SKIVE	TWO PIECES SKIVE
TIS0021-20	1.1/4"	31.8	20	44.6	210	3045	840	12180	210	8.268	1.433	2.133	004H-20	N series	ONI4-20	004H-20
TIS0021-24	1.1/2"	38.1	24	51.5	210	3045	840	12180	250	9.843	1.790	2.664	004H-24			004H-24
TIS0021-32	2"	50.8	32	66.3	210	3045	840	12180	315	12.402	2.649	3.943	004N-32			004N-32

Available with MSHA and Mega cover. In case of order use code TISM021 and TISV021.

# INTERPUMP HySO-FLEX 4K WS

## APPLICATIONS:



## TIS0028



## APPLICABLE SPECIFICATIONS

Exceeds SAE 100R12 - ISO 18752/CC

High Flexibility and Half Bend Radius. Qualification according ISO 18752/CC.

**Inner tube:** Synthetic rubber, extruded whole without joints, of uniform thickness.

**Reinforcement:** 4 steel wire spirals.

**Coverage:** Anti-abrasive synthetic rubber, resistant to oils, fuels and atmospheric conditions.

**Recommended fluids:** Biological and mineral oils, glycol-water based, water, lubricants.

**working temperature:** from -40 to +120°C for oils, from -40 to +70° C for water based fluids, from 0 to +70°C water.

Product number	ID		Dimension dash size	OD	Max WP		Min BP		Min BR		Weight (approx)		FERRULE		One piece Fitting series
	in	mm			bar	psi	bar	psi	mm	inch	kg/m	lb/ft	TWO PIECES NO SKIVE	TWO PIECES SKIVE	
TIS0028-06	3/8"	9.5	06	19.7	280	4060	1120	16240	65	2.559	0.620	0.417	0NI4-06	0SI4-06	N series
TIS0028-08	1/2"	12.7	08	22.5	280	4060	1120	16240	90	3.543	0.722	0.485	0NI4-08	0SI4-08	N series
TIS0028-10	5/8"	15.9	10	26.2	280	4060	1120	16240	100	3.937	0.938	0.630	0NI4-10	0SI4-10	N series
TIS0028-12	3/4"	19	12	29.8	280	4060	1120	16240	120	4.724	1.142	0.768	0NI4-12	0009-12	N series
TIS0028-16	1"	25.4	16	36.7	280	4060	1120	16240	150	5.906	1.622	1.090	0NI4-16	0009-16	N series
TIS0028-20	1.1/4"	31.8	20	44.6	280	4060	1120	16240	210	8.268	2.275	1.529	0NI4-20	004H-20	N series
TIS0028-24	1.1/2"	38.1	24	52.1	280	4060	1120	16240	250	9.843	2.952	1.978	0NI4-24	004N-24	N series

Available with MSHA and Mega cover. In case of order use code TISM028 and TISV028.

# INTERPUMP HySO-FLEX 5K WS

## TIS0035



### APPLICATIONS :



### APPLICABLE SPECIFICATIONS

Exceeds ISO 18752/CC - SAE 100R13

High Flexibility and Half Bend Radius. Qualification according ISO 18752/CC.

**Inner tube:** Synthetic rubber, extruded whole without joints, of uniform thickness.

**Reinforcement:** 4 steel wire spirals.

**Coverage:** Anti-abrasive synthetic rubber, resistant to oils, fuels and atmospheric conditions.

**Recommended fluids:** Mineral and biological oils, water, water based fluid, lubricants.

**working temperature:** from -40 to +120°C from -40 to +70° C for water based fluids, from 0 to +70°C water.

Product number	ID		Dimension dash size	OD	Max WP		Min BP		Min BR		Weight (approx)		FERRULE		One piece Fitting series
	mm	in			bar	psi	bar	psi	mm	inch	lb/ft	kg/m	TWO PIECES NO SKIVE	TWO PIECES SKIVE	
TIS0035-06	9.5	3/8"	06	19.7	350	5075	1400	20300	65	2.559	0.417	0.620	0NI4-06	0SI4-06	N series
TIS0035-08	12.7	1/2"	08	22.5	350	5075	1400	20300	90	3.543	0.485	0.722	0NI4-08	0SI4-08	N series
TIS0035-10	15.9	5/8"	10	26.2	350	5075	1400	20300	100	3.937	0.630	0.938	0NI4-10	0SI4-10	N series
TIS0035-12	19	3/4"	12	29.7	350	5075	1400	20300	120	4.724	0.758	1.129	0NI4-12	0009-12	N series
TIS0035-16	25.4	1"	16	36.7	350	5075	1400	20300	150	5.906	1.090	1.622	0NI4-16	004N-16	N series
TIS0035-20	31.8	1.1/4"	20	45.0	350	5075	1400	20300	210	8.268	1.644	2.446	0NI4-20	004N-20	N series
TIS0035-24	38	1.1/2"	24	52.9	350	5075	1400	20300	250	9.843	2.211	3.291	0NI4-24	004N-24	N series

Available with MSHA and Mega cover. In case of order use code TISM035 and TISV035.

# INTERPUMP HySO-FLEX 6K WS

## APPLICATIONS :



## TIS0042

## APPLICABLE SPECIFICATIONS

Exceeds ISO 18752/CC - SAE 100R15



High Flexibility and Half Bend Radius. Qualification according ISO 18752/CC.

**Inner tube:** Synthetic rubber, extruded whole without joints, of uniform thickness.

**Reinforcement:** 4-6 High tensile steel spirals (4 spirals up to 1", 6 spirals from 1 1/4")

**Coverage:** Anti-abrasive synthetic rubber, resistant to oils, fuels and atmospheric conditions.

**Recommended fluids:** Mineral and biological oils, water, water based fluid, lubricants.

**working temperature:** from -40 to +120°C from -40 to +70° C for water based fluids, from 0 to +70°C water.

Product number	ID		Dimension dash size	OD	Max WP		Min BP		Min BR		Weight (approx)		FERRULE		One piece Fitting series
	mm	in			bar	psi	bar	psi	mm	inch	lb/ft	kg/m	TWO PIECES NO SKIVE	TWO PIECES SKIVE	
TIS0042-06	9.5	3/8"	06	19.7	420	6090	1680	24360	65	2.559	0.445	0.662	0NI4-06	0SI4-06	N series
TIS0042-08	12.7	1/2"	08	22.5	420	6090	1680	24360	90	3.543	0.518	0.772	0NI4-08	0SI4-08	N series
TIS0042-10	15.9	5/8"	10	26.2	420	6090	1680	24360	100	3.937	0.630	0.938	0NI4-10	0013-10	N series
TIS0042-12	19	3/4"	12	30.6	420	6090	1680	24360	120	4.724	0.933	1.388	0NI4-12	004N-12	N series
TIS0042-16	25.4	1"	16	37.6	420	6090	1680	24360	150	5.906	1.303	1.940	0NI4-16	004N-16	N series
TIS0042-20	31.8	1.1/4"	20	47.8	420	6090	1680	24360	210	8.268	2.322	3.455	0NI6-20	0042-20	N series
TIS0042-24	38.1	1.1/2"	24	56	420	6090	1680	24360	250	9.843	2.975	4.427	0NI6-24	0042-24	N series

Available with MSHA and Mega cover. In case of order use code TISM042 and TISV042.

# SOLUTIONS FOR APPLICATIONS





**TFDC011B**



INTERPUMP  
COMPRESSOR

45

**THL201K**



INTERPUMP LongLift 15C

46

**THL202K**



INTERPUMP LongLift 25C

47

**T2E101K**



INTERPUMP LongLife  
Dual 15C

48

**T2E102K**



INTERPUMP LongLife  
Dual 25C

49

**THE2J2K**



INTERPUMP HYJACK

50

**TFDE011**



INTERPUMP HyRail

51

**THE0G1K**



INTERPUMP HyGEAR 15C

52

**TTRK200**



INTERPUMP HyTruck 200  
bar

53

**TTRK250**



INTERPUMP HyTruck 250  
bar

54

**TTRK350**



INTERPUMP HyTruck 350  
bar

55

**THD0500**



INTERPUMP HySpir 500

56

**TSG0042**



HyTRAKTION

57

**THS00JG**



INTERPUMP Mega Jet

58

**THEMMDR**



INTERPUMP MEGADRILL

59

**TFN001K TFB001K**



INTERPUMP Jet 15C

**60**

**TFN002K TFB002K**



INTERPUMP Jet 25C

**61**

**TEB0E28 TEN0E28**



INTERPUMP HyWASHER  
4K

**62**

**TEB0E42 TEN0E42**



INTERPUMP HyWASHER  
6K

**63**

**TCB2E28 TCN2E28**



INTERPUMP HyWASHER  
PLUS 4K

**64**

**TCB2E42 TCN2E42**



INTERPUMP HyWASHER  
PLUS 6K

**65**

**TFW0070**



INTERPUMP Hyblast 10k

**66**

**TFW0085**



INTERPUMP Hyblast 12k

**67**

**TFW0110 TFW0100**



INTERPUMP Hyblast 15k

**68**

**TFW0125 TFW0120**



INTERPUMP Hyblast 18k

**69**

**TFW0145 TFW0135**



INTERPUMP Hyblast 20k

**70**



# INTERPUMP COMPRESSOR

## APPLICATIONS :



## TFDC011B



## APPLICABLE SPECIFICATIONS

IMM - exceed EN 853 1SN

Pin pricked hose for compressor.

**Inner tube:** Synthetic rubber, extruded whole without joints, of uniform thickness.

**Reinforcement:** 1 steel wire braid.

**Coverage:** Anti-abrasive synthetic rubber, resistant to oils, fuels and atmospheric conditions.

**Recommended fluids:** Mineral oils, glycols and polyglycols, transmission fluids, air, air with oil vapours, mineral oils in aqueous emulsion (up to +212°F/ +100°C).

**working temperature:** from -40 to +135°C (intermittent 140°C).

Product number	ID		Dimension dash size	OD	Max WP		Min BP		Min BR		Weight (approx)		Ferrule
	in	mm			psi	bar	bar	psi	mm	inch	kg/m	lb/ft	
TFDC011B04	1/4"	6.4	04	13.4	3263	225	900	13050	100	3.937	0.24	0.161	0001-04
TFDC011B05	5/16"	8	05	15	3118	215	850	12325	115	4.528	0.278	0.187	0001-05
TFDC011B06	3/8"	9.5	06	17.4	2610	180	720	10440	130	5.118	0.367	0.247	0001-06
TFDC011B08	1/2"	12.7	08	20.6	2320	160	640	9280	180	7.087	0.437	0.294	0001-08
TFDC011B10	5/8"	16	10	23.7	1885	130	520	7540	200	7.874	0.524	0.352	0001-10
TFDC011B12	3/4"	19	12	27.7	1523	105	420	6090	240	9.449	0.653	0.439	0001-12
TFDC011B16	1 "	25.4	16	35.6	1276	88	350	5075	300	11.811	1.001	0.673	0001-16
TFDC011B20	1.1/4"	31.8	20	43.5	914	63	250	3625	420	16.535	1.435	0.964	0001-20
TFDC011B24	1.1/2"	38.1	24	54.6	725	50	200	2900	500	19.685	1.711	1.15	0001-24
TFDC011B32	2 "	50.8	32	66.9	580	40	160	2320	630	24.803	2.357	1.584	0001-32

Compressed air applications require additional safety devices. Hoses are not designed and not approved for "air brake" applications.

**Marking:** Available only "embossed"

# INTERPUMP LongLift 1SC

## THL201K



### APPLICATIONS :



### APPLICABLE SPECIFICATIONS

exceed EN 857 1SC- ISO 112237 1SC

NO-SKIVE hose. High abrasion resistance. Pressure rating exceeding standards. Easy to install. Approved and released for lift truck application. High resistance and elasticity. High flexibility at small bend radius. SMOOTH COVER.

**Inner tube:** Synthetic rubber, extruded whole without joints, of uniform thickness.

**Reinforcement:** 1 high tensile steel wire braids.

**Coverage:** Smooth synthetic rubber, resistant to oils, fuels and atmospheric conditions.

**Recommended fluids:** Mineral and biological oils, glycol-water based, water, lubricants.

**working temperature:** from -40 to +120° C (Intermittent 135°C), from -40 to +70° C for water based fluids, from 0 to +70°C water.

Product number	ID		Dimension dash size	OD	Max WP		Min BP		Min BR		Weight (approx)		Ferrule
	in	mm			bar	psi	bar	psi	mm	inch	kg/m	lb/ft	
THL201K-04	1/4"	6.4	04	12.3	250	3625	1120	16240	50	1.969	0.182	0.122	001C-04
THL201K-05	5/16"	8	05	13.5	250	3625	1000	14500	55	2.165	0.21	0.141	001C-05
THL201K-06	3/8"	9.5	06	15.7	250	3625	1000	14500	60	2.362	0.248	0.167	001C-06
THL201K-08	1/2"	12.7	08	18.9	200	2900	800	11600	70	2.756	0.391	0.263	001C-08
THL201K-10	5/8"	16	10	22.4	150	2175	600	8700	90	3.543	0.41	0.276	001C-10
THL201K-12	3/4"	19	12	26	150	2175	600	8700	100	3.937	0.534	0.359	001C-12
THL201K-16	1"	25.4	16	33.7	110	1595	440	6380	180	7.087	0.742	0.499	001C-16

**Marking:** Available only "mylar"

# INTERPUMP LongLift 2SC

## APPLICATIONS:



## THL202K



## APPLICABLE SPECIFICATIONS

exceed EN 857 2SC - ISO 11237

NO-SKIVE hose. High abrasion resistance. Pressure rating exceeding standards. Easy to install. Approved and released for lift truck application. High resistance and elasticity. High flexibility at small bend radius. SMOOTH COVER.

**Inner tube:** Synthetic rubber, extruded whole without joints, of uniform thickness.

**Reinforcement:** 2 high tensile steel wire braids.

**Coverage:** Smooth synthetic rubber, resistant to oils, fuels and atmospheric conditions.

**Recommended fluids:** Mineral and biological oils, glycol-water based, water, lubricants.

**working temperature:** from -40 to +120° C (Intermittent 135°C), from -40 to +70° C for water based fluids, from 0 to +70°C water.

Product number	ID		Dimension dash size	OD	Max WP		Min BP		Min BR		Weight (approx)		Ferrule
	in	mm			bar	psi	bar	psi	mm	inch	kg/m	lb/ft	
THL202K-04	1/4"	6.4	04	13.3	430	6235	1720	24940	50	1.969	0.283	0.19	001C-04
THL202K-05	5/16"	8	05	14.8	400	5800	1600	23200	60	2.362	0.324	0.218	001C-05
THL202K-06	3/8"	9.5	06	17.1	350	5075	1400	20300	70	2.756	0.418	0.281	001C-06
THL202K-08	1/2"	12.7	08	20.4	310	4495	1240	17980	80	3.15	0.521	0.35	001C-08
THL202K-10	5/8"	16	10	23.5	280	4060	1120	16240	100	3.937	0.626	0.421	001C-10
THL202K-12	3/4"	19	12	27.6	240	3480	960	13920	120	4.724	0.764	0.513	001C-12
THL202K-16	1"	25.4	16	35.8	210	3045	840	12180	160	6.299	1.171	0.787	001C-16

**Marking:** Available only "mylar"

# INTERPUMP LongLife Dual 1SC

## T2E101K



### APPLICATIONS :



### APPLICABLE SPECIFICATIONS

exceed EN 857 - ISO 11237

No-SKIVE hose. High abrasion resistance. Pressure rating exceeding standards. Easy to install. SMOOTH COVER.

**Inner tube:** Synthetic rubber, extruded whole without joints, of uniform thickness.

**Reinforcement:** 1 or 2 high tensile steel wire braids.

**Coverage:** Smooth synthetic rubber, resistant to oils, fuels and atmospheric conditions.

**Recommended fluids:** Mineral and biological oils, glycol-water based, water, lubricants.

**working temperature:** from -40 to +120° C (Intermittent 135°C), from -40 to +70° C for water based fluids.

Product number	ID		Dimension	OD	T.H.	T.H. max	Max WP		Min BP		Min BR		Weight (approx)		Ferrule
	in	mm	dash size		mm	mm	bar	psi	bar	psi	mm	inch	kg/m	lb/ft	
T2E101K-04	1/4	6.4	04	12.4	24.8	26	250	3625	1120	16240	50	1.969	0.364	0.244	001C-04
T2E101K-05	5/16	8.0	05	13.5	27.0	28.2	250	3625	1000	14500	55	2.165	0.420	0.282	001C-05
T2E101K-06	3/8	9.5	06	15.6	31.2	32.6	250	3625	1000	14500	60	2.362	0.490	0.330	001C-06
T2E101K-08	1/2	12.7	08	19	38	39.4	200	2900	800	11600	70	2.756	0.782	0.525	001C-08

A specific machine is available to split the twin hose . In case of order use code MHSXA001.



**Marking:** Available also white ink-jet brand version. In case of order use code T2E101KI.

# INTERPUMP LongLife Dual 2SC

## APPLICATIONS :



## T2E102K



## APPLICABLE SPECIFICATIONS

exceed EN 857 - ISO 11237 2SC

No-SKIVE hose. High abrasion resistance. Pressure rating exceeding standards. Easy to install. SMOOTH COVER.

**Inner tube:** Synthetic rubber, extruded whole without joints, of uniform thickness.

**Reinforcement:** 1 or 2 high tensile steel wire braids.

**Coverage:** Smooth synthetic rubber, resistant to oils, fuels and atmospheric conditions.

**Recommended fluids:** Mineral and biological oils, glycol-water based, water, lubricants.

**working temperature:** from -40 to +120° C (Intermittent 135°C), from -40 to +70° C for water based fluids, from 0 to +70°C water.

Product number	ID		Dimension dash size	OD	T.H.	T.H. max	Max WP		Min BP		Min BR		Weight (approx)		Ferrule
	in	mm					bar	psi	bar	psi	mm	inch	kg/m	lb/ft	
T2E102K-04	1/4	6.4	04	13.3	26.6	27.8	430	6235	1720	24940	60	2.362	0.566	0.380	001C-04
T2E102K-05	5/16	8.0	05	14.8	29.6	31.8	400	5800	1600	23200	60	2.362	0.640	0.430	001C-05
T2E102K-06	3/8	9.5	06	17.1	34.2	32.6	350	5075	1400	20300	70	2.756	0.836	0.561	001C-06
T2E102K-08	1/2	12.7	08	20.5	41	42.4	310	4495	1240	17980	80	3.150	1.042	0.699	001C-08

A specific machine is available to split the twin hose . In case of order use code MHSXA001.



**Marking:** Available also white ink-jet brand version. In case of order use code T2E102KI.

# INTERPUMP HYJACK

## THE2J2K



### APPLICATIONS :



### APPLICABLE SPECIFICATIONS

IMM Specs

Tested for jack applications up to a static pressure of 760 bar/11000 psi. Compact version. Safety factor > 2: 1. Smooth cover. Tested and released with dedicated fitting (002M bushing + Multispiral couplings).

**Inner tube:** Oil resistant synthetic rubber.

**Reinforcement:** 2 high-load steel wire braids.

**Coverage:** Synthetic rubber resistant to oils, fuels, atmospheric conditions and abrasion.

**Recommended fluids:** Mineral and biological oils.

**working temperature:** from -40 to +100°C.

Product number	ID		Dimension dash size	OD	Max WP		Min BP		Min BR		Weight (approx)		Ferrule
	in	mm			bar	psi	bar	psi	mm	inch	kg/m	lb/ft	
THE2J2K-04	1/4"	6.4	04	13.3	760	11000	1672	24200	75	2.953	0.281	0.189	002M-04
THE2J2K-06	3/8"	9.5	06	17.1	725	10500	1595	23100	90	3.543	0.422	0.284	002M-06

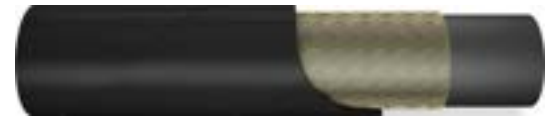
**Marking:** Available only "mylar"

# INTERPUMP HyRail

## APPLICATIONS :



## TFDE011



## APPROVALS :

ISO 11925, EN 45545-2

## APPLICABLE SPECIFICATIONS

IMM - SAE 100R1AT - EN 853 1SN - ISO 1436

Pressure, dimensions and bend radius ratings in accordance with EN 853 1SN, ISO 1436 1SN and SAE 100R1AT. Fire Retardant Cover. For air or gas application hose cover pin-prieked.

**Inner tube:** Synthetic rubber, extruded whole without joints, of uniform thickness.

**Reinforcement:** 1 steel wire braid.

**Coverage:** Synthetic rubber fire resistant

**Recommended fluids:** Mineral and biological oils, water, water based fluids, compressed air.

**working temperature:** from -40 to +100°C (intermittent 120°C) for oils, from -40 to 70°C for water based fluids and compressed air, from 0 to +70°C for water,.

Product number	ID		Dimension dash size	OD	Max WP		Min BP		Min BR		Weight (approx)		Ferrule
	in	mm			bar	psi	bar	psi	mm	inch	kg/m	lb/ft	
TFDE011-04	1/4"	6.4	04	13.4	225	3263	900	13050	100	3.937	0.231	0.155	001C-04
TFDE011-05	5/16"	8	05	15	215	3118	860	12470	115	4.528	0.254	0.171	001C-05
TFDE011-06	3/8"	9.5	06	17.4	180	2610	720	10440	125	4.921	0.338	0.227	001C-06
TFDE011-08	1/2"	12.7	08	20.6	160	2320	640	9280	180	7.087	0.415	0.279	001C-08
TFDE011-10	5/8"	16	10	23.7	130	1885	520	7540	200	7.874	0.477	0.321	001C-10
TFDE011-12	3/4"	19	12	27.7	105	1523	420	6090	240	9.449	0.618	0.415	001C-12
TFDE011-16	1"	25.4	16	35.6	88	1276	352	5104	300	11.811	0.901	0.605	001C-16

**Marking:** Available also embossed brand version. In case of order use TFDE011N.

# INTERPUMP HyGEAR 1SC

## THEOG1K



### APPLICABLE SPECIFICATIONS

EXCEED EN 857 1SC, ISO 11237 1SC

NO-SKIVE tube. High abrasion resistance. Easy assembly. Suitable for the use with the "GearBox" and "ATF" oils. Exceeds EN 853 impulse test requirements.

**Inner tube:** Synthetic rubber, extruded whole without joints, of uniform thickness.

**Reinforcement:** 1 high tensile steel wire braids.

**Coverage:** Anti-abrasive synthetic rubber, resistant to oils, fuels and atmospheric conditions.

**Recommended fluids:** Mineral and biological oils, glycol-water based, water, lubricants.

**working temperature:** from -40 to +100°C from -40 to +70° C for water based fluids, from 0 to +70°C water.

Product number	ID		Dimension	OD	Max WP		Min BP		Min BR		Weight (approx)		Ferrule
	in	mm	dash size		bar	psi	bar	psi	mm	inch	kg/m	lb/ft	
THEOG1K-12	3/4"	19	12	26.0	105	1523	420	6090	120	4.724	0.546	0.367	001C-12
THEOG1K-16	1"	25.4	16	33.7	88	1276	352	5104	150	5.906	0.759	0.510	001C-16
THEOG1K-20	1.1/4"	31.8	20	41.1	82	1189	328	4756	210	8.268	1.11	0.746	001C-20
THEOG1K-24	1.1/2"	38.1	24	48.6	82	1190	328	4756	250	9.842	1.319	0.886	001C-24
THEOG1K-32	2"	50.8	32	61.5	68	986	272	3944	315	12.402	1.767	1.187	001C-32
THEOG1K-40	2.1/2"	63.5	40	73.5	35	508	140	2030	500	19.685	2.108	1.417	001C-40

**Marking:** Disponibile anche con marcatura a rilievo. In caso di ordine, usare il codice THEOG1KN.



# INTERPUMP HyTruck 200 bar

## APPLICATIONS :



## TTRK200

## APPLICABLE SPECIFICATIONS

IMM Specs



NO-SKIVE hose. A line dedicated to tipper applications. Safety factor 2,5:1.

**Inner tube:** Synthetic rubber, extruded whole without joints, of uniform thickness oil and water resistant.

**Reinforcement:** 1 braid (DN19) or 2 braids (DN25) made of high tensile steel wire.

**Coverage:** Synthetic rubber resistant to oils, fuels and atmospheric conditions.

**Recommended fluids:** Mineral and biological oils, glycol-water based, water, lubricants.

**working temperature:** from -40 to +100°C (intermittent 125°). from -40 to +70° C for water based fluids, from 0 to +70°C water.

Product number	ID		Dimension	OD	Max WP		Min BP		Min BR		Weight (approx)		Ferrule
	in	mm	dash size		bar	psi	bar	psi	mm	inch	kg/m	lb/ft	
TTRK200-12	3/4"	19	12	26	200	2900	500	7250	180	7.087	0.492	0.33	001C-12
TTRK200-16	1"	25.4	16	35.8	200	2900	500	7250	250	9.843	1.171	0.787	001C-16

**Marking:** Available only "mylar"





# INTERPUMP HyTruck 250 bar

## TTRK250



### APPLICATIONS :



### APPLICABLE SPECIFICATIONS

IMM Specs

NO-SKIVE hose. A line dedicated to tipper applications. Safety factor 2,5:1.

**Inner tube:** Synthetic rubber, extruded whole without joints, of uniform thickness oil and water resistant.

**Reinforcement:** 1 braid (DN19) or 2 braids (DN25) made of high tensile steel wire.

**Coverage:** Synthetic rubber resistant to oils, fuels and atmospheric conditions.

**Recommended fluids:** Mineral and biological oils, glycol-water based, water, lubricants.

**working temperature:** from -40 to +100°C (intermittent 125°), from -40 to +70° C for water based fluids, from 0 to +70°C water.

Product number	ID		Dimension	OD	Max WP		Min BP		Min BR		Weight (approx)		Ferrule
	in	mm	dash size		bar	psi	bar	psi	mm	inch	kg/m	lb/ft	
TTRK250-12	3/4"	19	12	26	250	3625	625	9063	180	7.087	0.534	0.359	001C-12
TTRK250-16	1"	25.4	16	35.8	250	3625	625	9063	250	9.843	1.171	0.787	001C-16

**Marking:** Available only "mylar"

# INTERPUMP HyTruck 350 bar

## APPLICATIONS :



## TTRK350



## APPLICABLE SPECIFICATIONS

IMM Specs

NO-SKIVE hose. A line dedicated to tipper applications. Safety factor 2,5:1.

**Inner tube:** Synthetic rubber, extruded whole without joints, of uniform thickness oil and water resistant.

**Reinforcement:** 2 high tensile steel wire braids.

**Coverage:** Synthetic rubber resistant to oils, fuels and atmospheric conditions.

**Recommended fluids:** Mineral and biological oils, glycol-water based, water, lubricants.

**working temperature:** from -40 to +100°C (intermittent 125°), from -40 to +70° C for water based fluids, from 0 to +70°C water.

Product number	ID		Dimension	OD	Max WP		Min BP		Min BR		Weight (approx)		Ferrule
	in	mm	dash size		bar	psi	bar	psi	mm	inch	kg/m	lb/ft	
TTRK350-12	3/4"	19	12	26	350	5075	875	12688	200	7.874	0.782	0.525	001C-12
TTRK350-16	1"	25.4	16	35.8	350	5075	875	12688	250	9.843	1.171	0.787	001C-16

**Marking:** Available only "mylar"

# INTERPUMP HySpir 500

## THD0500



### APPLICABLE SPECIFICATIONS

IMM Specs, exceeds SAE 100R15

4 Spirals compact hose, WP 500 bar, Impulse tested iaw ISO 6803, Hydrostatic Transmission Application oriented.

**Inner tube:** Synthetic rubber, extruded whole without joints, of uniform thickness.

**Reinforcement:** 4 steel wire spirals.

**Coverage:** Anti-abrasive synthetic rubber, resistant to oils, fuels and atmospheric conditions.

**Recommended fluids:** Biological and mineral oils, glycol-water based, water, lubricants.

**working temperature:** from -40 to +100°C, from -40 to +70° C for water based fluids, from 0 to +70°C water.

Product number	ID		Dimension dash size	OD	Max WP		Min BP		Min BR		Weight (approx)		Ferrule
	mm	in			bar	psi	bar	psi	mm	inch	lb/ft	kg/m	
THD0500-12	19	3/4"	12	32	500	7250	2000	29000	210	8.3	1.06	1.572	004N-12
THD0500-16	25.4	1"	16	40	500	7250	2000	29000	250	9.8	1.59	2.350	00J4-16
THD0500-20	31.8	1.1/4"	20	49.5	500	7250	2000	29000	380	14.9	2.6	3.848	0042-20

# HyTRAKTION

## APPLICATIONS :



## TSG0042



## APPLICABLE SPECIFICATIONS

EXCEED SAE 100R15 - ISO 3862

High Tensile Resistance. Hose developed and qualified for combined high pulling force and high pressure application. Impulse Tested as per ISO 3862. High ozone, abrasion and severe ambient conditions resistance.

**Inner tube:** Synthetic rubber, extruded whole without joints, of uniform thickness.

**Reinforcement:** 6 steel wire spirals.

**Coverage:** Anti-abrasive synthetic rubber, resistant to oils, fuels and atmospheric conditions.

**Recommended fluids:** Mineral and biological oils, glycol-water based, water, lubricants, compressed air

**working temperature:** from -40 to +121° C (Intermittent 125°C) from -40 to +70° C for water based fluids, from 0 to +70°C water.

Product number	ID		Dimension dash size	OD	Max WP		Min BP		Min BR		Weight (approx)		Ferrule
	in	mm			bar	psi	bar	psi	mm	inch	kg/m	lb/ft	
TSG0042-20	1.1/4"	31.8	20	49.6	420	6090	1680	24360	350	13.780	3.700	2.486	0042-20
TSG0042-24	1.1/2"	38	24	56.4	420	6090	1680	24360	400	15.784	4.450	2.990	0042-24

# INTERPUMP Mega Jet

## THS00JG



### APPLICATIONS :



### APPLICABLE SPECIFICATIONS

IMM - ISO 7751

High performance structure. High ozone and weather conditions resistance. Safety factor 3,5:1 according to ISO 7751.

**Inner tube:** Synthetic rubber, extruded whole without joints, of uniform thickness, abrasion resistant.

**Reinforcement:** 6 high tensile steel wire spirals.

**Coverage:** Anti-abrasive syntetic rubber, resistant to oils, fuels and atmospheric conditions.

**Recommended fluids:** Water, water-soap based, water grout based.

**working temperature:** from -40 to +100°C, from -40 to +70° C for water based fluids, from 0 to +70°C water.

Product number	ID		Dimension	OD	Max WP		Min BP		Min BR		Weight (approx)		Ferrule	SAFETY	N
	in	mm	dash size		bar	psi	bar	psi	mm	inch	kg/m	lb/ft		FACTOR	SPIR
THS00JGN16	1"	25.4	16	42.2	600	8700	2100	30450	330	12.992	3.200	2.151	00J6-16	3.5:1	6
THS00JGN20	1.1/4"	31.8	20	49.7	550	7975	1925	27913	265	10.433	3.891	2.615	00I3-20	3.5:1	6
THS00JGN24	1.1/2"	38.1	24	57.8	500	7250	1750	25375	310	12.205	5.182	3.483	00I3-24	3.5:1	6
THS00JGN32	2"	50.8	32	71.5	480	6960	1680	24360	600	23.623	6.700	4.503	00I3-32	3.5:1	6

Available with MSHA and Mega cover. In case of order use code THSM0JG and THSV0JG.

**Marking:** Available only "embossed"

# INTERPUMP MEGADRILL

## APPLICATIONS :



## THEMMDR



## APPROVALS :

MSHA

## APPLICABLE SPECIFICATIONS

Exceeds ISO 3862 Type R13 - IMM Specs

High pressure hoses. Power lines/severe applications. Perforations.

**Inner tube:** Synthetic rubber, extruded whole without joints, of uniform thickness.

**Reinforcement:** 6 high tensile steel wire spirals.

**Coverage:** Abrasion resistant synthetic rubber resistant to oils, fuels, atmospheric conditions. MSHA.

**Recommended fluids:** Hydraulic fluids petroleum based (mineral oils), glycol-water based, water, lubricants.

**working temperature:** from -40 to +100°C (intermittent 120°C), from -40 to +70° C for water based fluids, from 0 to +70°C water.

Product number	ID		Dimension	OD	Max WP		Min BP		Min BR		Weight (approx)		Ferrule
	mm	in	dash size		bar	psi	bar	psi	mm	inch	lb/ft	kg/m	
THEMMDRN40	63.5	2.1/2"	40	84.5	350	5000	1400	20300	900	35.430	5.492	8.173	0013-40
THEMMDRN48	76.2	3"	48	97.3	350 (*) / 210 (**)	5000 (*) / 3045 (**)	880	12760	1000	39.370	6.393	9.515	0013-48

(\*\*) - Dynamic Application Safety Factor > 4:1

(\*) - Static Application

**Marking:** Available only "embossed"

# INTERPUMP Jet 1SC

## TFN001K TFB001K



### APPLICATIONS :



### APPLICABLE SPECIFICATIONS

EN 857 1SC - ISO 7751

Dimensions according to EN 857 1SC. NO-SKIVE flexible line. Safety factor exceeding ISO 7751. Product designed for pressure wash applications. Any different use may reduce service life.

**Inner tube:** Synthetic rubber, extruded whole without joints, of uniform thickness.

**Reinforcement:** 1 steel wire braid.

**Coverage:** Anti-abrasive synthetic rubber, resistant to oils, fuels and atmospheric conditions.

**Recommended fluids:** Water, water-soap based, glycol-water based.

**working temperature:** from -40 to +135°C (intermittent 155°C).

Product number	ID		Dimension dash size	OD	Max WP		Min BP		Min BR		Weight (approx)		Ferrule	Color Coverage
	in	mm			bar	psi	bar	psi	mm	inch	kg/m	lb/ft		
TFN001KN04	1/4"	6.4	04	12.3	250	3625	900	13050	75	2.953	0.182	0.122	001C-04	N
TFN001KN05	5/16"	8	05	14	250	3625	840	12180	85	3.346	0.203	0.136	001C-05	N
TFN001KN06	3/8"	9.5	06	15.6	250	3625	720	10440	90	3.543	0.256	0.172	001C-06	N
TFN001KN08	1/2"	12.7	08	18.7	250	3625	640	9280	130	5.118	0.341	0.229	001C-08	N
TFB001KN04	1/4"	6.4	04	12.3	250	3625	900	13050	75	2.953	0.182	0.122	001C-04	B
TFB001KN05	5/16"	8	05	14	250	3625	840	12180	85	3.346	0.203	0.136	001C-05	B
TFB001KN06	3/8"	9.5	06	15.6	250	3625	720	10440	90	3.543	0.256	0.172	001C-06	B
TFB001KN08	1/2"	12.7	08	18.7	250	3625	640	9280	130	5.118	0.341	0.229	001C-08	B

**Marking:** Available only embossed



# INTERPUMP Jet 2SC

## APPLICATIONS :



## APPLICABLE SPECIFICATIONS

EN 857 2SC - ISO 7751

## TFN002K TFB002K



Dimensions according to EN 857 2SC. NO-SKIVE flexible line. Safety factor exceeding ISO 7751. Product designed for pressure wash applications. Any different use may reduce service life.

**Inner tube:** Synthetic rubber, extruded whole without joints, of uniform thickness.

**Reinforcement:** 2 high tensile steel wire braids.

**Coverage:** Anti-abrasive synthetic rubber, resistant to oils, fuels and atmospheric conditions.

**Recommended fluids:** Water, water-soap based, glycol-water based.

**working temperature:** from -40 to +135°C (intermittent 155°C).

Product number	ID		Dimension	OD	Max WP		Min BP		Min BR		Weight (approx)		Ferrule	Color
	in	mm	dash size		bar	psi	bar	psi	mm	inch	kg/m	lb/ft		
TFN002KN04	1/4"	6.5	04	13.3	400	5800	1600	23200	75	2.953	0.281	0.189	001C-04	N
TFN002KN05	5/16"	8	05	14.8	400	5800	1400	20300	85	3.346	0.327	0.220	001C-05	N
TFN002KN06	3/8"	9.5	06	17.1	400	5800	1320	19140	90	3.543	0.418	0.281	001C-06	N
TFN002KN08	1/2"	12.7	08	20.4	400	5800	1100	15950	130	5.118	0.525	0.353	001C-08	N
TFB002KN04	1/4"	6.5	04	13.3	400	5800	1600	23200	75	2.953	0.281	0.189	001C-04	B
TFB002KN05	5/16"	8	05	14.8	400	5800	1400	20300	85	3.346	0.327	0.220	001C-05	B
TFB002KN06	3/8"	9.5	06	17.1	400	5800	1320	19140	90	3.543	0.418	0.281	001C-06	B
TFB002KN08	1/2"	12.7	08	20.4	400	5800	1100	15950	130	5.118	0.525	0.353	001C-08	B

**Marking:** Available only embossed

# INTERPUMP HyWASHER 4K

## TEBOE28 TENOE28



### APPLICATIONS :



### APPLICABLE SPECIFICATIONS

ISO 7751

Compact, light and flexible hose line with Safety factor exceeding ISO 7751. Product designed for pressure wash, water and steam cleaning and sanitization.

**Inner tube:** Synthetic rubber, extruded whole without joints, of uniform thickness.

**Reinforcement:** 1 high tensile steel wire braid.

**Coverage:** Synthetic rubber resistant to water, water base fluids, abrasion and atmospheric conditions.

**Recommended fluids:** Water, water-soap based, glycol-water based, steam and sanitizers.

**working temperature:** +155°C water, water base fluid. +163°C steam.

Product number	ID		OD	Max WP Hot Water bar	SAFETY FACTOR	Max WP Steam bar	Min BP bar	Min BR mm	Weight Kg/m	Ferrule	Color Coverage
	in	mm									
TEBOE28-04M005	1/4"	6.4	11.5	280	3	28	840	40	0.15	001L-04	B
TEBOE28-05M005	5/16"	8.0	13.1	280	3	28	840	50	0.16	001L-05	B
TEBOE28-06M005	3/8"	9.5	14.8	280	3	28	840	60	0.20	001L-06	B
TEBOE28-08M005	1/2"	12.7	17.1	280	2.5	28	700	70	0.29	001L-08	B
TENOE28-04M005	1/4"	6.4	11.5	280	3	28	840	40	0.15	001L-04	N
TENOE28-05M005	5/16"	8.0	13.1	280	3	28	840	50	0.16	001L-05	N
TENOE28-06M005	3/8"	9.5	14.8	280	3	28	840	60	0.20	001L-06	N
TENOE28-08M005	1/2"	12.7	17.1	280	2.5	28	700	70	0.29	001L-08	N

-Standard package: length multiple of 5m. with minimum length of 10m. - For steam use, pinprick the cover and use a anti kink system at the ends. - Cover with custom colours available on request.

# INTERPUMP HyWASHER 6K

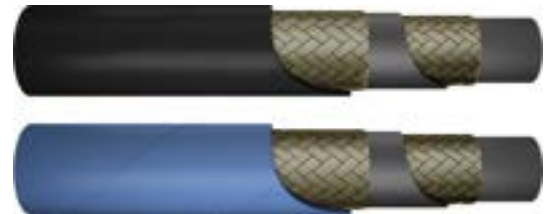
## APPLICATIONS :



## APPLICABLE SPECIFICATIONS

ISO 7751

## TEBOE42 TENOE42



Compact, light and flexible hose line with Safety factor exceeding ISO 7751. Product designed for pressure wash, water and steam cleaning and sanitization.

**Inner tube:** Synthetic rubber, extruded whole without joints, of uniform thickness.

**Reinforcement:** 2 high-load steel wire braids.

**Coverage:** Synthetic rubber resistant to water, water base fluids, abrasion and atmospheric conditions.

**Recommended fluids:** Water, water-soap based, glycol-water based, steam and sanitizers.

**working temperature:** +155°C water, water base fluid. +163°C steam.

Product number	ID		OD	Max WP Hot Water bar	SAFETY FACTOR	Max WP Steam bar	Min BP bar	Min BR mm	Weight Kg/m	Ferrule	Color Coverage
	in	mm									
TEBOE42-04M005	1/4"	6.4	13.3	420	4	28	1680	65	0.29	001C-04	B
TEBOE42-05M005	5/16"	8.0	14.8	420	3	28	1260	75	0.33	001C-05	B
TEBOE42-06M005	3/8"	9.5	17.1	420	3	28	1260	85	0.42	001C-06	B
TEBOE42-08M005	1/2"	12.7	20.4	420	3	28	1260	100	0.52	001C-08	B
TENOE42-04M005	1/4"	6.4	13.3	420	4	28	1680	65	0.29	001C-04	N
TENOE42-05M005	5/16"	8.0	14.8	420	3	28	1260	75	0.33	001C-05	N
TENOE42-06M005	3/8"	9.5	17.1	420	3	28	1260	85	0.42	001C-06	N
TENOE42-08M005	1/2"	12.7	20.4	420	3	28	1260	100	0.52	001C-08	N

-Standard package: length multiple of 5m. with minimum length of 10m. - For steam use, pinprick the cover and use a anti kink system at the ends. - Cover with custom colours available on request.

# INTERPUMP HyWASHER PLUS 4K

## TCB2E28 TCN2E28



### APPLICATIONS :



### APPLICABLE SPECIFICATIONS

ISO 7751

Compact, light and flexible hose line with Safety factor exceeding ISO 7751. Product designed for pressure wash, water and steam cleaning and sanitization.

**Inner tube:** Synthetic rubber, extruded whole without joints, of uniform thickness.

**Reinforcement:** 1 high tensile steel wire braid.

**Coverage:** Anti-abrasive synthetic rubber, resistant to oils and animal fat, water, water base fluids and atmospheric conditions.

**Recommended fluids:** Water, water-soap based, glycol-water based, steam and sanitizers.

**working temperature:** +155°C water, water base fluid. +163°C steam.

Product number	ID		OD	Max WP Hot Water bar	SAFETY FACTOR	Max WP Steam bar	Min BP bar	Min BR mm	Weight Kg/m	Ferrule	Color Coverage
	in	mm									
TCB2E28-04M005	1/4"	6.4	11.5	280	3	28	840	40	0.15	001L-04	B
TCB2E28-05M005	5/16"	8.0	13.1	280	3	28	840	50	0.16	001L-05	B
TCB2E28-06M005	3/8"	9.5	14.8	280	3	28	840	60	0.20	001L-06	B
TCB2E28-08M005	1/2"	12.7	17.1	280	2.5	28	700	70	0.29	001L-08	B
TCN2E28-04M005	1/4"	6.4	11.5	280	3	28	840	40	0.15	001L-04	N
TCN2E28-05M005	5/16"	8.0	13.1	280	3	28	840	50	0.16	001L-05	N
TCN2E28-06M005	3/8"	9.5	14.8	280	3	28	840	60	0.20	001L-06	N
TEC2E28-08M005	1/2"	12.7	17.1	280	2.5	28	700	70	0.29	001L-08	N

-Standard package: length multiple of 5m. with minimum length of 10m. - For steam use, pinprick the cover and use a anti kink system at the ends. - Cover with custom colours available on request.

# INTERPUMP HyWASHER PLUS 6K

## APPLICATIONS :



## APPLICABLE SPECIFICATIONS

ISO 7751

## TCB2E42 TCN2E42



Compact, light and flexible hose line with Safety factor exceeding ISO 7751. Product designed for pressure wash, water and steam cleaning and sanitization.

**Inner tube:** Synthetic rubber, extruded whole without joints, of uniform thickness.

**Reinforcement:** 2 high-load steel wire braids.

**Coverage:** Anti-abrasive synthetic rubber, resistant to oils and animal fat, water, water base fluids and atmospheric conditions.

**Recommended fluids:** Water, water-soap based, glycol-water based, steam and sanitizers.

**working temperature:** +155°C water, water base fluid. +163°C steam.

Product number	ID		OD	Max WP Hot Water bar	SAFETY FACTOR	Max WP Steam bar	Min BP bar	Min BR mm	Weight Kg/m	Ferrule	Color Coverage
	in	mm									
TCB2E42-04M005	1/4"	6.4	13.3	420	4	28	1680	65	0.29	001C-04	B
TCB2E42-05M005	5/16"	8.0	14.8	420	3	28	1260	75	0.33	001C-05	B
TCB2E42-06M005	3/8"	9.5	17.1	420	3	28	1260	85	0.42	001C-06	B
TCB2E42-08M005	1/2"	12.7	20.4	420	3	28	1260	100	0.52	001C-08	B
TCN2E42-04M005	1/4"	6.4	13.3	420	4	28	1680	65	0.29	001C-04	N
TCN2E42-05M005	5/16"	8.0	14.8	420	3	28	1260	75	0.33	001C-05	N
TCN2E42-06M005	3/8"	9.5	17.1	420	3	28	1260	85	0.42	001C-06	N
TCN2E42-08M005	1/2"	12.7	20.4	420	3	28	1260	100	0.52	001C-08	N

-Standard package: length multiple of 5m. with minimum length of 10m. - For steam use, pinprick the cover and use a anti kink system at the ends. - Cover with custom colours available on request.

# INTERPUMP Hyblast 10k

## TFW0070



### APPLICATIONS :



### APPLICABLE SPECIFICATIONS

IMM SPEC. - ISO 7751

Safety factor 2,5:1. Light and compact. ISO 7751.

**Inner tube:** Water resistant synthetic rubber.

**Reinforcement:** 4 steel wire spirals.

**Coverage:** Anti-abrasive syntetic rubber, resistant to oils, fuels and atmospheric conditions.

**Recommended fluids:** Water, water-soap based, glicol-water based.

**working temperature:** from -10 to +70°C, Max 100°C.

Product number	ID		Dimension	OD	Max WP		Min BP		Min BR		Weight (approx)		Ferrule	Coupling
	mm	in	dash size		bar	psi	bar	psi	mm	inch	kg/m	lb/ft		Series
TFW0070-16	25.4	1"	16	38.8	700	10150	1750	25375	280	11.024	2.100	1.413	00Y4-16	Y series

**Marking:** Available also embossed brand version. In case of order use code TFW0070N.

**ih INTERPUMP HY-BLAST → 10k ISO 7751/S.F. 2,5 - DN 25 I.D. 1" - W.P. 700 BAR/10150 PSI**

# INTERPUMP Hyblast 12k

## APPLICATIONS :



## TFW0085

## APPLICABLE SPECIFICATIONS

IMM SPEC. - ISO 7751



Safety factor 2,5:1. Light and compact. ISO 7751. Reliability and high performances.

**Inner tube:** Water resistant synthetic rubber.

**Reinforcement:** 4-6 high tensile steel wire spiral.

**Coverage:** Anti-abrasive syntetic rubber, resistant to oils, fuels and atmospheric conditions.

**Recommended fluids:** Water, water-soap based, glicol-water based.

**working temperature:** from -10 to +70°C, Max 100°C.

Product number	ID		Dimension dash size	OD	Max WP		Min BP		Min BR		Weight (approx)		Ferrule	N	Coupling
	in	mm			bar	psi	bar	psi	mm	inch	kg/m	lb/ft			
TFW0085-04	1/4"	6.4	04	17	850	12325	2125	30813	110	4.331	0.570	0.384	0019-04	4	M series
TFW0085-06	3/8"	9.5	06	19.8	850	12325	2125	30813	140	5.512	0.730	0.491	00Y4-06	4	Y series
TFW0085-08	1/2"	12.7	08	22.5	850	12325	2125	30813	170	6.693	0.840	0.565	00Y4-08	4	Y series
TFW0085-12	3/4"	19	12	31.2	850	12325	2125	30813	220	8.661	1.690	1.137	00Y4-12	4	Y series
TFW0085-16	1"	25.4	16	42.2	850	12325	2125	30813	330	12.992	3.200	2.150	00Y6-16	6	Y series

**Marking:** Available also embossed brand version. In case of order use TFW0085N.

# INTERPUMP Hyblast 15k

## TFW0110 TFW0100



### APPLICATIONS :



### APPLICABLE SPECIFICATIONS

IMM SPEC. - ISO 7751

Safety factor 2,5:1. Light and compact. ISO 7751. Reliability and high performances.

**Inner tube:** Water resistant synthetic rubber.

**Reinforcement:** 4 steel wire spirals.

**Coverage:** Anti-abrasive syntetic rubber, resistant to oils, fuels and atmospheric conditions.

**Recommended fluids:** Water, water-soap based, glicol-water based.

**working temperature:** from -10 to +70°C, Max 100°C.

Product number	ID		Dimension dash size	OD	Max WP		Min BP		Min BR		Weight (approx)		Ferrule	Coupling Series
	mm	in			bar	psi	bar	psi	mm	inch	kg/m	lb/ft		
TFW0110-04	6.4	1/4"	04	17	1100	15950	2750	39875	110	4.331	0.570	0.384	0019-04	M series
TFW0110-06	9.5	3/8"	06	20.7	1100	15950	2750	39875	140	5.512	0.890	0.599	00Y4-06	Y series
TFW0110-08	12.7	1/2"	08	24	1100	15950	2750	39875	180	7.087	1.150	0.774	00Y4-08	Y series
TFW0100-12	19	3/4"	12	31.6	1000	14500	2500	36250	240	9.449	1.800	1.211	00Y4-12	Y series

**Marking:** Available also embossed brand version. In case of order use code TFW0110N.



# INTERPUMP Hyblast 18k

## APPLICATIONS :



## TFW0125 TFW0120



## APPLICABLE SPECIFICATIONS

IMM SPEC. - ISO 7751

Safety factor 2,5:1. Light and compact. ISO 7751. Reliability and high performances.

**Inner tube:** Water resistant synthetic rubber.

**Reinforcement:** 4 steel wire spirals.

**Coverage:** Anti-abrasive syntetic rubber, resistant to oils, fuels and atmospheric conditions.

**Recommended fluids:** Water, water-soap based, glicol-water based.

**working temperature:** from -10 to +70°C, Max 100°C.

Product number	ID		Dimension dash size	OD	Max WP		Min BP		Min BR		Weight (approx)		Ferrule	Coupling Series
	mm	in			bar	psi	bar	psi	mm	inch	kg/m	lb/ft		
TFW0125-06	9.5	3/8"	06	20.7	1250	18125	3125	45313	160	6.229	0.920	0.619	00Y4-06	Y series
TFW0120-08	12.7	1/2"	08	24	1200	17400	3000	43500	200	7.874	1.190	0.801	00Y4-08	Y series

**Marking:** Available also embossed brand version. In case of order use code TFW0125N.

# INTERPUMP Hyblast 20k

**TFW0145 TFW0135**



**APPLICATIONS :**



**APPLICABLE SPECIFICATIONS**

IMM SPEC. - ISO 7751

Safety factor 2,5:1. Light and compact. ISO 7751. Reliability and high performances.

**Inner tube:** Water resistant synthetic rubber.

**Reinforcement:** 6 steel wire spirals.

**Coverage:** Anti-abrasive syntetic rubber, resistant to oils, fuels and atmospheric conditions.

**Recommended fluids:** Water, water-soap based, glicol-water based.

**working temperature:** from -10 to +70°C, Max 100°C.

Product number	ID		Dimension dash size	OD	Max WP		Min BP		Min BR		Weight (approx)		Ferrule	Coupling Series
	mm	in			bar	psi	bar	psi	mm	inch	kg/m	lb/ft		
TFW0145-06	9.5	3/8"	06	23.3	1450	21025	3625	52563	180	7.087	1.350	0.909	00Y6-06	Y series
TFW0145-08	12.7	1/2"	08	27	1450	21025	3625	52563	220	8.661	1.800	1.211	00Y6-08	Y series
TFW0135-12	19	3/4"	12	35	1350	19575	3375	48938	260	10.236	2.670	1.797	00Y6-12	Y series

**Marking:** Available also embossed brand version. In case of order use code TFW0145N.

Thermoplastic

ink



**TFS0007**



SAE 100R7

**73**

**TFS00H1**



One high tensile steel wire braid

**74**

**TFS00H2**



Two high tensile steel wire braids

**75**



**TFS0008**



SAE 100R8

**76**



**TFS0018**



R18 Low temperature

**77**



**TFS00HP**



INTERPUMP HyUltra

**78**



**TFS00MP**



Mini-flexible

**79**

# SAE 100R7

## TFS0007

### APPLICATIONS :



### APPROVALS :

MSHA

### APPLICABLE SPECIFICATIONS

Exceed SAE 100R7 - ISO 3949 R7

Exceeds SAE 100R7. Light and flexible, abrasion resistant. Limited change in length. Pinpricked cover.

**Inner tube:** Polyester elastomer.

**Reinforcement:** One or two braids of synthetic fiber.

**Coverage:** Polyurethane, black, pinpricked, white ink-jet branding.

**Recommended fluids:** Hydraulic fluids petroleum based, glycol-water based, lubricant.

**working temperature:** from -40 to +100°C continuous for air and water based fluids.

Product number	ID		Dimension	OD	Max WP		Min BP		Min BR		Weight (approx)		Ferrule
	in	mm	dash size		bar	psi	bar	psi	mm	inch	kg/m	lb/ft	
TFS0007-02	1/8"	4	02	8.3	210	3045	840	12180	25	0.984	0.050	0.034	*
TFS0007-03	3/16"	5	03	9.6	210	3045	840	12180	25	0.984	0.060	0.040	0007-03
TFS0007-04	1/4"	6.5	04	11.8	210	3045	840	12180	35	1.378	0.090	0.060	0007-04
TFS0007-05	5/16"	8.1	05	13.9	190	2755	760	11020	60	2.362	0.115	0.077	0007-05
TFS0007-06	3/8"	9.7	06	16	160	2320	640	9280	55	2.165	0.145	0.097	0007-06
TFS0007-08	1/2"	13	08	20.1	140	2030	560	8120	75	2.953	0.210	0.141	0007-08
TFS0007-10	5/8"	16.3	10	23.7	105	1522	420	6090	110	4.331	0.280	0.188	0007-10
TFS0007-12	3/4"	19.5	12	27.1	90	1305	360	5220	140	5.512	0.335	0.225	0007-12
TFS0007-16	1"	25.9	16	34	70	1015	280	4060	190	7.480	0.455	0.305	0007-16

Available also in twin version ( in case of order use code T2S0007)

Available also in 'No conductive' version - ( in case of order use code TFS0NC7)



Available also in 'Neptune' version - marine application ( in case of order use code TFS00M7)



Available also in 'Nautilus' version - off-shore equipment ( in case of order use code TFS00Y7)



Available also in 'Solvent' version - (in case of order use code TFS00V7)



# One high tensile steel wire braid

## TFS00H1



### APPLICATIONS :



### APPROVALS :

MSHA

### APPLICABLE SPECIFICATIONS

SAE 100R1 - MEETS OR EXCEEDS PRESSURE LEVEL  
OF EN 853 1SN - EN 857 1SC

Slim line construction for compact installation and flexibility. Lightweight. Steel braid offers low volumetric expansion and optimum in length characteristics. Abrasion resistant.

**Inner tube:** Polyester elastomer.

**Reinforcement:** One braid of steel wire.

**Coverage:** Polyurethane, black, white ink-jet branding.

**Recommended fluids:** Hydraulic fluids petroleum based, glycol-water based, lubricant.

**working temperature:** from -40 to +100°C continuous for air and water based fluids.

Product number	ID		Dimension dash size	OD	Max WP		Min BP		Min BR		Weight (approx)		Ferrule
	in	mm			bar	psi	bar	psi	mm	inch	kg/m	lb/ft	
TFS00H1-03	3/16"	5	03	9.7	360	5220	1440	20880	30	1.181	0.120	0.081	0008-03
TFS00H1-04	1/4"	6.4	04	11.7	310	4495	1240	17980	40	1.575	0.165	0.111	0008-04
TFS00H1-05	5/16"	8.1	05	13.2	250	3625	1000	14500	55	2.165	0.190	0.128	0008-05
TFS00H1-06	3/8"	9.8	06	15.5	225	3263	900	13050	65	2.559	0.230	0.155	0008-06
TFS00H1-08	1/2"	13	08	18.8	190	2755	760	11020	85	3.346	0.300	0.202	0008-08
TFS00H1-10	5/8"	16.3	10	22	140	2030	560	8120	115	4.528	0.335	0.225	0008-10
TFS00H1-12	3/4"	19.5	12	25.8	115	1668	460	6670	145	5.709	0.460	0.309	0008-12
TFS00H1-16	1"	25.8	16	33.4	95	1378	380	5510	180	7.087	0.640	0.430	0008-16



Available also in "Neptune" version - marine application (in case of order use code TFS0H1M). NO MSHA.



Available also in 'Solvent' version (in case of order use code TFS00V1). NO MSHA.



Available also in twin version ( in case of order use code T2500H1)



# Two high tensile steel wire braids

## APPLICATIONS :



## TFS00H2



## APPROVALS :

MSHA

## APPLICABLE SPECIFICATIONS

MEETS OR EXCEEDS SAE 100R2 PERFORMANCE

Rugged construction for HD application and prolonged lifetime. Suitable in harsh condition. Abrasion resistant.

**Inner tube:** Polyester elastomer.

**Reinforcement:** Two braid of steel wire.

**Coverage:** Polyurethane, black, white ink-jet branding.

**Recommended fluids:** Hydraulic fluids petroleum based, glycol-water based, lubricant.

**working temperature:** from -40 to +100°C continuous for air and water based fluids.

Product number	ID		Dimension	OD	Max WP		Min BP		Min BR		Weight (approx)		Ferrule
	in	mm	dash size		bar	psi	bar	psi	mm	inch	kg/m	lb/ft	
TFS00H2-04	1/4"	6.4	04	12.8	400	5800	1600	23200	40	1.575	0.245	0.165	0022-04
TFS00H2-06	3/8"	9.8	06	16.8	330	4785	1320	19140	65	2.559	0.37	0.249	0022-06
TFS00H2-08	1/2"	13	08	20.2	260	3770	1040	15080	85	3.346	0.455	0.306	0022-08
TFS00H2-10	5/8"	16.3	10	23.5	220	3190	880	12760	115	4.528	0.56	0.376	0022-10
TFS00H2-12	3/4"	19.5	12	27.5	150	2175	660	9570	170	6.693	0.7	0.470	0022-12

Available also in twin version (in case of order use code T2500H2).



Available also in 'Solvent' version (in case of order use code TFS00V2). NO MSHA.



# SAE 100R8

## TFS0008



### APPLICATIONS :



### APPROVALS :

MSHA

### APPLICABLE SPECIFICATIONS

Exceed SAE 100R8 - ISO 3949 R8

Exceeds SAE 100R8. Light and flexible, abrasion resistant. Limited change in length. Pinpricked cover.

**Inner tube:** Polyester elastomer.

**Reinforcement:** One or two braids of aramid fiber.

**Coverage:** Polyurethane, black, pinpricked, white ink-jet branding.

**Recommended fluids:** Hydraulic fluids petroleum based, glycol-water based, lubricant.

**working temperature:** from -40 to +100°C continuous for air and water based fluids.

Product number	ID		Dimension	OD	Max WP		Min BP		Min BR		Weight (approx)		Ferrule
	in	mm	dash size		bar	psi	bar	psi	mm	inch	kg/m	lb/ft	
TFS0008-02	1/8"	4	02	8	420	6090	1680	24360	25	0.984	0.045	0.03	0008-02
TFS0008-03	3/16"	5	03	8.9	350	5075	1400	20300	30	1.181	0.050	0.034	0008-03
TFS0008-04	1/4"	6.5	04	11.5	350	5075	1400	20300	50	1.968	0.085	0.057	0008-04
TFS0008-05	5/16"	8.1	05	13.4	300	4350	1200	17400	55	2.165	0.105	0.071	0008-05
TFS0008-06	3/8"	9.7	06	15.5	280	4060	1120	16240	60	2.362	0.135	0.091	0008-06
TFS0008-08	1/2"	13	08	19.9	245	3552	980	14210	80	3.15	0.2	0.134	0008-08
TFS0008-10	5/8"	16.3	10	23.4	200	2900	800	11600	125	4.921	0.25	0.168	0008-10
TFS0008-12	3/4"	19.5	12	27.1	165	2392	660	9570	150	5.906	0.32	0.215	0008-12
TFS0008-16	1"	25.9	16	34.2	140	2030	560	8120	200	7.874	0.435	0.292	0008-16

Available also in twin version ( in case of order use code T250008).



Available also in 'Nautilus' version - off-shore equipment ( in case of order use code TFS00Y8).



Available also in 'Neptune' version - marine application ( in case of order use code TFS00M7).



Available also in 'Solvent' version (in case of order use code TFS00V8).



Available also in 'No conductive' version (in case of order use code TFS0NC8).





# R18 Low temperature

## APPLICATIONS :



## TFS0018



## APPLICABLE SPECIFICATIONS

Meets or exceeds SAE 100R18

Optimum bonding. Special polyester cover operating in cold environment. Tight bend radius. Microperforated covering.

**Inner tube:** Polyester elastomer.

**Reinforcement:** One or two braids of synthetic fiber.

**Coverage:** Special polyester.

**Recommended fluids:** Hydraulic fluids petroleum based, glycol-water based, lubricant.

**working temperature:** from -55 to +100°C continuous for air and water based fluids.

Product number	ID		Dimension dash size	OD	Max WP		Min BP		Min BR		Weight (approx)		Ferrule
	in	mm			bar	psi	bar	psi	mm	inch	kg/m	lb/ft	
TFS0018-03	3/16"	5	03	9.6	210	3045	840	12180	25	0.984	0.060	0.040	0008-03
TFS0018-04	1/4"	6.5	04	12.2	210	3045	840	12180	35	1.378	0.095	0.064	0008-04
TFS0018-05	5/16"	8.1	05	14.3	210	3045	840	12180	45	1.772	0.130	0.087	0008-05
TFS0018-06	3/8"	9.7	06	16.6	210	3045	840	12180	45	1.772	0.165	0.111	0008-06
TFS0018-08	1/2"	13	08	22.5	210	3045	840	12180	70	2.756	0.295	0.198	*
TFS0018-10	5/8"	16.3	10	26.1	210	3045	840	12180	100	3.937	0.370	0.249	*

Available also in twin version ( in case of order use code T2S0018).



# INTERPUMP HyUltra

## TFS00HP



### APPLICATIONS :



### APPROVALS :

MSHA

### APPLICABLE SPECIFICATIONS

Combined Aramid + Steel braid construction for compact design. Lightweight and flexible. Narrow bending radius for use on hose reels and in tight environments. Antiabrasion cover.

**Inner tube:** Polyester elastomer.

**Reinforcement:** One or two braid of aramid fiber plus one steel braid.

**Coverage:** Polyurethane, black, white ink-jet branding.

**Recommended fluids:** Hydraulic fluids petroleum based, glycol-water based, lubricant.

**working temperature:** from -40 to +100°C continuous for air and water based fluids.

Product number	ID		Dimension	OD	Max WP		Min BP		Min BR		Weight (approx)		Ferrule
	in	mm	dash size		bar	psi	bar	psi	mm	inch	kg/m	lb/ft	
TFS00HP-04	1/4"	6.6	04	12.7	700	10150	2800	40600	35	1.377	0.180	0.121	0019-04
TFS00HP-06	3/8"	9.8	06	18.7	700	10150	2800	40600	90	3.543	0.330	0.222	*

Available also in twin version ( in case of order use code T2500HP).

Available also in 'No conductive' version (in case of order use code TFSNCHP). NO MSHA.



# Mini-flexible

## APPLICATIONS:



## TFS00MP



Very flexible and lightweight. Kink resistance. Antistick cover allow use of hose bundles for easy routing. Nipples fittings range.

**Inner tube:** Polyester elastomer.

**Reinforcement:** One braid of aramid fiber.

**Coverage:** Antigrip polyurethane, black, pinpricked.

**Recommended fluids:** Hydraulic fluids petroleum based, glycol-water based, lubricant.

**working temperature:** from -40 to +100°C continuous for air and water based fluids.

Product number	ID		Dimension dash size	OD	Max WP		Min BP		Min BR		Weight (approx)		Ferrule
	in	mm			bar	psi	bar	psi	mm	inch	kg/m	lb/ft	
TFS00MP-012	5/64"	2.0	02	5.0	630	9135	1900	27550	20	0.787	0.02	0.013	*
TFS00MP-020	1/8"	3.0	03	6.0	630	9135	1900	27550	30	1.181	0.025	0.017	*
TFS00MP-025	5/32"	4.0	04	8.0	630	9135	1900	27550	40	1.575	0.045	0.030	*

Available also in twin version ( in case of order use code T2S00MP).



PTFE

ink



**TF000T1**



P.T.F.E. - T1

**82**

**TF00LTC**



P.T.F.E. - LTC

**83**

# P.T.F.E. - T1

## TF000T1



### APPLICATIONS :



### APPLICABLE SPECIFICATIONS

SAE 100 R14

Hose for use with IMM Hydraulics fittings. Standard tail.

**Inner tube:** Smooth P.T.F.E. thin wall.

**Reinforcement:**

**Coverage:** 1 high tensile stainless steel AISI 304 wire braids

**Recommended fluids:**

**working temperature:** from -70 to +260°C.

Product number	ID			Wall thickness mm	OD	Max WP (23°C)		Min BP (23°C)		Min BR		Ferrule
	in	mm	Dash			bar (*)	psi	bar	psi	mm	inch	
TF000T1-03	3/16"	4.8	03	0,7	7.4	200	2900	800	11600	35	1.377	PTFE-03
TF000T1-04	1/4"	6.35	04	0,7	9	175	2538	700	10150	45	1.771	PTFE-04
TF000T1-05	5/16"	7.9	05	0,7	10.8	150	2175	600	8700	50	1.968	PTFE-05
TF000T1-06	3/8"	9.5	06	0,7	12.4	135	1958	540	7830	55	2.165	PTFE-06
TF000T1-08	1/2"	12.7	08	0,7	15.7	120	1740	480	6960	70	2.755	PTFE-08
TF000T1-10	5/8"	15.9	10	0,8	19.1	100	1450	400	5800	130	5.118	PTFE-10
TF000T1-12	3/4"	19	12	0,8	22.2	90	1305	360	5220	190	7.480	PTFE-12
TF000T1-16	1"	25.4	16	1	29.7	65	943	260	3770	270	10.629	PTFE-16

For temperature over 100°C, please contact our technical department

# P.T.F.E. - LTC

## TF00LTC

### APPLICATIONS :



### APPLICABLE SPECIFICATIONS



Hose for use with IMM Hydraulics fittings. Standard tail.

**Inner tube:** Convoluted P.T.F.E. core.

**Reinforcement:**

**Coverage:** 1 high tensile stainless steel AISI 304 wire braids

**Recommended fluids:**

**working temperature:** from -70 to +260°C.

Product number	ID		ID Min	Wall thickness	Dimension	Max WP (23°C)		Min BR		Weight (approx)		Ferrule
	in	mm				mm	mm	OD	bar (*)	psi	mm	
TF00LTC-06	3/8"	9.5	06	0.9	15.5	125	1813	20	0.787	0.069	102	PTFE-06-C
TF00LTC-08	1/2"	12.7	08	0.9	18.5	110	1595	25	0.984	0.081	121	PTFE-08-C
TF00LTC-10	5/8"	15.9	10	0.9	22.5	80	1160	50	1.969	0.091	136	PTFE-10-C
TF00LTC-12	3/4"	19	12	0.9	26.7	70	1015	65	2.559	0.153	228	PTFE-12-C
TF00LTC-16	1"	25.4	16	1.1	33.7	50	725	90	3.543	0.189	281	PTFE-16-C
TF00LTC-20	1 1/4"	31.8	20	1.02	40.7	34	493	127	5.000	0.233	347	PTFE-20-C
TF00LTC-24	1 1/2"	38.1	24	1.12	48.3	30	435	152	5.984	0.318	473	PTFE-24-C
TF00LTC-32	2"	50.8	32	1.2	61.5	23	334	200	7.874	0.369	549	PTFE-32-C

(\*) - For temperature over 100°C and ferrule, please contact our technical department

# Accessories









**SPMP**



Armour Guard

100

**SPMW**



Wire Guard

100



**MANB**



Handle (Blue)

101

**MANN**



Handle (Black)

101

**SAPB**



Armour Guard Black "Basic"

102

**SKPB**



Armour Guard Black "Endurance"

103



**TPRS**



Protective textile stockings

104

**GP085**



Black PVC sheath+

105

**CFVS**



Glass fiber knitted sleeve

106

**CAFV**



Braided Glass fiber sleeve

107

**CTA**



Heat shrink PVC caps

108



**HSMA1**



Manual without bss

**HSMA2**



Manual with bss

**HSMB1**

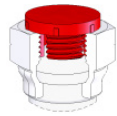


Table mounted

109

**PLUGS  
Tappi**

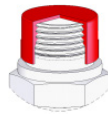
**PLM**



Protection plugs

110

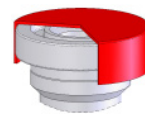
**PLF**



Protection plugs

111

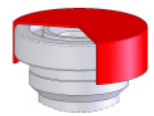
**PFS3**



Protection plugs for SAE  
3000 flanges

112

**PFS6**



Protection plugs for SAE  
6000 flanges

112

**Gauges  
Tamponi**



Go/Not go double gauges

113

**Rondella  
Bonded**



Metric copper washer

114

**Rondella  
Bonded**

**RBMO - RB00**



Metric Bonded Seal

115

**RBMA - RBGA**



Self-cent Bonded Seal

115

**Guarnizioni  
Seal**



Seals for adaptors and  
fittings

116-125

**Valigie O-Ring  
Box O-Ring**

**BOXG-BS-70**



O-Ring NBR70 shore  
british standard

126

**BOXH-MS-70**



O-Ring NBR70 shore  
Metric Standard

126

**Bonded seals  
kit**

**BOXBG**



BSP - Self-centering bon-  
ded seal kit

127

## Armour Guard



Part number		
	ID	Lenght
SPMP-13	13	4 MT.
SPMP-15	15	4 MT.
SPMP-16	16	4 MT.
SPMP-17	17	4 MT.
SPMP-18	18	4 MT.
SPMP-20	20	4 MT.
SPMP-22	22	4 MT.
SPMP-24	24	4 MT.
SPMP-26	26	4 MT.
SPMP-28	28	4 MT.
SPMP-30	30	4 MT.
SPMP-32	32	4 MT.
SPMP-34	34	4 MT.
SPMP-38	38	4 MT.
SPMP-40	40	4 MT.
SPMP-41	41	4 MT.
SPMP-42	42	4 MT.
SPMP-47	47	4 MT.
SPMP-49	49	3 MT.
SPMP-52	52	2 MT.
SPMP-54	54	1,5 MT.
SPMP-60	60	1,5 MT.
SPMP-68	68	1 MT.
SPMP-72	72	1 MT.

## Wire Guard



Part number			
	ID	Thickness	Lenght
SPMW-13	13	2	4 MT.
SPMW-15	15	2	4 MT.
SPMW-16	16	2	4 MT.
SPMW-17	17	2	4 MT.
SPMW-18	18	2	4 MT.
SPMW-20	20	2	4 MT.
SPMW-22	22	2	4 MT.
SPMW-24	24	2	4 MT.
SPMW-26	26	2	4 MT.
SPMW-28	28	2	4 MT.
SPMW-30	30	2	4 MT.
SPMW-32	32	2,5	4 MT.
SPMW-34	34	2,5	4 MT.
SPMW-38	38	3	4 MT.
SPMW-40	40	3	4 MT.
SPMW-42	42	3	4 MT.
SPMW-52	52	3	4 MT.
SPMW-54	54	3	4 MT.
SPMW-60	60	3	4 MT.
SPMW-72	72	3	4 MT.

# MANB

## Handle (Blue)



Material: Rubber SBR+EPDM.  
 Operating **temperature range**: -20°C +150°C.  
 Hardness: shore A65.  
 High mechanical strength.

Part number		
	I.D.mm	Length(mt)
MANB-04	15	118
MANB-05	18	128
MANB-06	21	128
MANB-08	23	128

# MANN

## Handle (Black)



Material: Rubber SBR+EPDM.  
 Operating **temperature range**: -20°C +150°C.  
 Hardness: shore A65.  
 High mechanical strength.

Part number		
	I.D.mm	Length(mt)
MANN-04	15	118
MANN-05	18	128
MANN-06	21	128
MANN-08	23	128

# SAPB



## Armour Guard Black “Basic”

**Material:** rigid PVC no crash. (\*)  
**Spiral:** abrasion, crushing, UV, ozone and flame resistant conforming to UL94 V2 self-extinguishing class.  
**Operating temperature range:** -10°C +70°C.  
**Hardness:** sshore A78 ±5.  
**Breaking stretching (ISO R527):** 130%.  
**Breaking load (ISO R527):** 40 kg/cm².

Part number			Weight Kg/m
	I.D.mm	length(mt)	
SAPB-08	8	50	0.05
SAPB-12	12	50	0.06
SAPB-16	16	50	0.08
SAPB-20	20	50	0.12
SAPB-27	27	50	0.22
SAPB-30	30	50	0.25
SAPB-36	36	50	0.33
SAPB-44	44	25	0.48
SAPB-56	56	20	0,80
SAPB-67	67	20	0.88
SAPB-80	80	10	1.39
SAPB-100	100	7	1.90
SAPB-120	120	6	1.78

(\*)Also available in HDPE version for protection of hydraulic hoses.  
 Temperature range: -60°C +100°C.  
 Spiral: abrasion crush, UV, ozone, low temperature.  
 Resistance: Acids, Oils, Solvents.

- Other diameters and/or pressures are feasible upon request - The characteristics and technical data could be changed without warning.

## Armour Guard Black “Endurance”

Spiralina in plastica nera ‘Endurance’



**Bending creep:** 110/30 Mpa (ISO 178).

**Spiral:** abrasion, crushing, UV, ozone and flame resistant conforming to UL94 V2 self-extinguishing class.

**Electrical resistivity:** 10 e13 Ω.

**Test temperature:** -25 ° C + 120 ° C.

Polyamide (PA) spiral for protection of hydraulic tubes and multiple pipe wiring where high temperature is required.

Part number			
	I.D.mm	Length(mt)	Weight Kg/m
SKPB-08	8	30	0.04
SKPB-13	12	30	0.05
SKPB-16	16	30	0.07
SKPB-19	20	30	0.09
SKPB-25	25	30	0.14
SKPB-27	27	30	0.15
SKPB-35	35	30	0.21
SKPB-45	45	30	0.32
SKPB-67	67	20	0.065
SKPB-80	80	10	0.95
SKPB-100	100	5	1.425

- Other diameters and/or pressures are feasible upon request - The characteristics and technical data could be changed without warning.

# TPRS


# Protective textile stockings



**USE:** Ideal for grouping and protecting tube bundles, saving space, protecting operators from possible assemblage failures. Protect from abrasion and wear. Limited blockage or loss of assembly.

### Features:

- Elongation at break:** from 24 to 34%.
- Material:** High density polypropylene (75% polypropylene - 25% Polyester).
- Color:** Black.
- MSHA IC-242/05 (\*MSHA IC-242/06).**
- Treatment:** UV stabilization at 200 Kly.
- Abrasion resistance:** > 25000 cycles.
- Maximum working temperature:** 90°C (194°F).

Part number	Width Larghezza		Roll
	mm	mm	length
TPRS-20	35	20	100
TPRS-22	40	22	100
TPRS-25	45	25	100
TPRS-28	50	28	100
TPRS-32	55	32	100
TPRS-35	60	35	100
TPRS-40	65	40	100
TPRS-45	80	45	100
TPRS-50	90	50	100
TPRS-70	120	70	100
TPRS-75	120	75	100
TPRS-90	150	90	100

\*Also available in polyester version and Max operating temperature 130°C.



## Black PVC sheath

Guaina nera in PVC

## GP085



**USE:** Particularly suitable for grouping tube bundles. UV protection. Abrasion wear and tear. Waterproof to solvents, oils, etc ..

### Features:

**Flame propagation:** self-extinguishing grade 0 (according to UL94).

**Material:** PVC 70.


**Color:** Black

**Maximum operating temperature:** 70 ° C according to CEI 23-14. UL94.

**Original breaking load:** 16.3 N/mm<sup>2</sup>.

**Original elongation at break:** 250%.

**Hardness shore:** 75 a 15°.

Part number			Roll length
	ID mm	Wall thickness	
GP085-15	15	0.6	200
GP085-18	18	0.6	125
GP085-22	22	0.6	75
GP085-24	24	0.6	75
GP085-26	26	0.6	75
GP085-28	28	0.6	100
GP085-30	30	0.6	100
GP085-34	34	0.7	100
GP085-40	40	0.7	25

# CFVS

## Glass fiber knitted sleeve with red silicon coating



**USE:** Particularly suitable for steel mills, foundries, glass processing, shipyards, railways. Isolating for class H and class C motors, transformers. Cabling in ovens, welders. Specially designed for high and very high temperature resistance.

### Features:

**Maximum operating temperature:** 1650 ° C (3000 ° F) exposure 15-30 seconds - 1093 ° C (2000 ° F) exposure 15-20 minutes - 260 ° C (500 ° F) to -54 ° C (-65 ° F) continuous exposure.

**Flame Resistance ISO15540 & ISO15541.**

**Oil and fluid resistance:** Resistant to most liquids including those based on hydrocarbons. Unmatched functionality after immersion for 120 hours at 80 ° F in MIL-L-6082 and Skydroll 500 liquid.

Compliance SAE AS1072E.

MSHA Certification.

Certified iaw UL 1441, VW1.

Tested iaw ISO 6940, ISO6530, BS 2576, EN373, EN388.

Rail Certification EN 45545-2:2013-08.

Part number		Roll
	Size	length*
CFVS-06-30	06	30
CFVS-10-30	10	30
CFVS-13-30	13	30
CFVS-16-30	16	30
CFVS-19-30	19	30
CFVS-22-30	22	30
CFVS-25-30	25	30
CFVS-29-30	29	30
CFVS-32-30	32	30
CFVS-35-30	35	30
CFVS-38-30	38	30
CFVS-41-30	41	30
CFVS-44-30	44	30
CFVS-51-30	51	30
CFVS-57-30	57	30
CFVS-64-30	64	30
CFVS-70-30	70	30

Part number		Roll
	Size	length*
CFVS-76-30	76	30
CFVS-89-30	89	30
CFVS-102-30	102	30
CFVS-114-30	114	30
CFVS-127-30	127	30

## Braided glass fiber sleeve

## CAFV



**USE:** Sleeving are braided to ensure elasticity and to be applicated easily on pipes. Used for heat insulation and protection of hoses. They can be treated externally with elastomers and silicone.

### Features:

Good stability at high temperatures.

**Maximum operating temperature:** 538 ° C (continuous); 650 ° C (intermittent).


Low thermal conductivity.

Good dimensional stability.

Good resistance to chemical agents.

Good mechanical strength.

High flexibility.

Part number		Roll
	Size	lenght
CAFV-13	13	300
CAFV-19	19	225
CAFV-22	22	195
CAFV-25	25	195
CAFV-32	32	135
CAFV-38	38	210
CAFV-51	51	75
CAFV-64	64	134
CAFV-76	76	60
CAFV-102	102	52

**Cautionary notes:** Extended exposure to water or other liquids causes weakening of the fibers. Loose fibers may cause some irritation to skin. Long sleeves, goggles and gloves are recommended during installation.

## CTA HY-CAP Capsules in shrink-wrapping PVC



System for preventing the internal contamination of the assembled hose up to the time of assembly, equivalent and alternative to the traditional threaded plastic plug.

### Features:

**Environment:** Reduction of plastic waste quantities.

**Material:** Thermoplastic polyvinyl chloride (PVC) foil leaf.

**Range:** Cover of all applications with only 7 capsules diameters.

**Management:** Controls, documenting and reordering only 7 codes.

Heat-shrinking times around the second.

Capsule color and logo customizable, for minimum order quantity.

Part number			Hexagonal covered	Q.ty Box
	Size	Lenght		
CTA2530IFS	25	25	12/22	5805
CTA2850IFS	28	28	22/24	3120
CTA3140IFS	31	31	24/27	3864
CTA3440IFS	34	34	27/30	3828
CTA3850IFS	38	38	30/32	2200
CTA4660IFS	46	46	32/41	1320
CTA7050NA	70	70	41/70	750



## Heat shrink machine

## HSM



HSMA1



HSMA2



HSMB1

**Features:**

230 V (1000 W).

**Material:** Stainless steel.

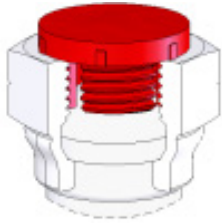
**Versions:** Table mounted (HSMB1).

Manual, with or without base support stand (bss) (HSMA1 and HSMA2).

Part number	Version	Weight Kg	Dimensions (mm)	
			A X B	h
HSMA1	Manual, without bss	1.5	240x100	240
HSMA2	Manual, with bss	2.0	240x180	320
HSMB1	Table mounted	3.0	480x150	220

## Protection plugs

### Male plug

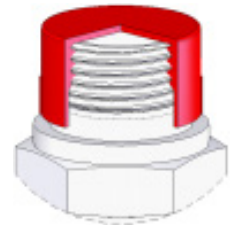


Part number	Thread/Filetto				
	UNF/UN	BSPB/BSPT	NPTF	ORFS	METRIC
PLUG-01MV	-	1/8"-28	1/8"-27	-	M10X1,5
PLUG-21MV	7/16"-20	-	-	-	-
PLUG-02MV	1/2"-20	1/4"-19	1/4"-18	-	M12X1,5
PLUG-23MV	9/16"-18	-	-	9/16"-18	M14X1,5
PLUG-03MV	5/8"-18	3/8"-19	3/8"-18	-	M16X1,5
PLUG-13MV	-	-	-	11/16"-16	M18X1,5
PLUG-25MV	3/4"-16	-	-	-	-
PLUG-04MV	-	1/2"-14	1/2"-14	-	M20X1,5
PLUG-36MV	-	-	-	13/16"-16	-
PLUG-05MV	7/8"-14	5/8"-14	-	-	M22X1,5
PLUG-37MV	-	-	-	1"-14	-
PLUG-20MV	-	-	-	-	M24X1,5
PLUG-06MV	1.1/16"-12	3/4"-14	3/4"-14	-	M26X1,5
PLUG-29MV	1.3/16"-12	-	-	1.3/16"-12	M30X2/M30X1,5
PLUG-07MV	1.5/16"-12	1"-11	1"-11.1/2	-	-
PLUG-15MV	-	-	-	-	M36X2/M36X1,5
PLUG-38MV	-	-	-	1.7/16"-12	-
PLUG-32MV	-	-	-	-	M38X1,5
PLUG-27MV	1.5/8"-12	-	-	-	-
PLUG-08MV	-	1.1/4"-11	1.1/4"-11.1/2	-	-
PLUG-33MV	-	-	-	-	M42X1,5
PLUG-16MV	-	-	-	1.11/16"-12	M42X2
PLUG-17MV	-	-	-	-	M45X1,5/M45X2
PLUG-09MV	1.7/8"-12	1.1/2"-11	1.1/2"-11.1/2	-	-
PLUG-40MV	-	-	-	2"-12	-
PLUG-18MV	-	-	-	-	M52X2
PLUG-10MV	-	2"-11	2"-11.1/2	-	-
PLUG-28MV	2.1/2"-12	-	-	-	-

Some versions with pressure caps are also available.

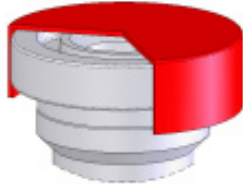
## Protection plugs

### Female plug



Part number	Thread/Filetto				
	UNF/UN	BSPP/BSPT	NPTF	ORFS	METRIC
PLUG-01FV	-	1/8"-28	1/8"-27	-	M10X1,5
PLUG-21FV	7/16"-20	-	-	-	-
PLUG-11FV	-	-	-	-	M12X1,5
PLUG-22FV	1/2"-20	-	-	-	-
PLUG-02FV	-	1/4"-19	1/4"-18	-	-
PLUG-23FV	9/16"-18	-	-	9/16"-18	M14X1,5
PLUG-24FV	5/8"-18	-	-	-	-
PLUG-12FV	-	-	-	-	M16X1,5
PLUG-03FV	-	3/8"-19	3/8"-18	-	-
PLUG-35FV	-	-	-	11/16"-16	-
PLUG-13FV	-	-	-	-	M18X1,5
PLUG-25FV	3/4"-16	-	-	-	-
PLUG-19FV	-	-	-	-	M20X1,5
PLUG-04FV	-	1/2"-14	1/2"-14	13/16"-16	-
PLUG-26FV	7/8"-14	-	-	-	M22X1,5
PLUG-05FV	-	5/8"-14	-	-	-
PLUG-20FV	-	-	-	-	M24X1,5
PLUG-37FV	-	-	-	1"-14	-
PLUG-06FV	1.1/16"-12	3/4"-14	3/4"-14	-	M26X1,5
PLUG-29FV	1.3/16"-12	-	-	1'3/16	M30X1,5/M30X2
PLUG-07FV	1.5/16"-12	1"-11	1"-11.1/2	-	-
PLUG-15FV	-	-	-	-	M36X1,5/M36X2
PLUG-38FV	-	-	-	1.7/16"-12	-
PLUG-32FV	-	-	-	-	M38X1,5
PLUG-27FV	1.5/8"-12	-	-	-	-
PLUG-08FV	-	1.1/4"-11	1.1/4"-11.1/2	-	M42X1,5
PLUG-16FV	-	-	-	-	M42X2
PLUG-39FV	-	-	-	1.11/16"-12	-
PLUG-17FV	-	-	-	-	M45X1,5/M45X2
PLUG-09FV	1.7/8"-12	1'1/2	1.1/2"-11.1/2	-	-
PLUG-40FV	-	-	-	2"-12	-
PLUG-18FV	-	-	-	-	M52X2
PLUG-10FV	-	2"-11	2"-11.1/2	-	-
PLUG-28FV	2.1/2"-12	-	-	-	-

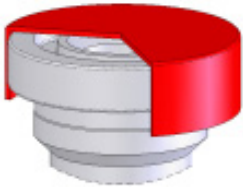
## PFS3



### Protection plugs for SAE 3000 flanges

Part number	Size
PFS3-08V	1/2
PFS3-12V	3/4
PFS3-16V	1
PFS3-20V	1.1/4
PFS3-24V	1.1/2
PFS3-32V	2
PFS3-40V	2.1/2

## PFS6



### Protection plugs for SAE 6000 flanges

Part number	Size
PFS6-08V	1/2
PFS6-12V	3/4
PFS6-16V	1
PFS6-20V	1.1/4
PFS6-24V	1.1/2
PFS6-32V	2



## Go/Not go double gauges

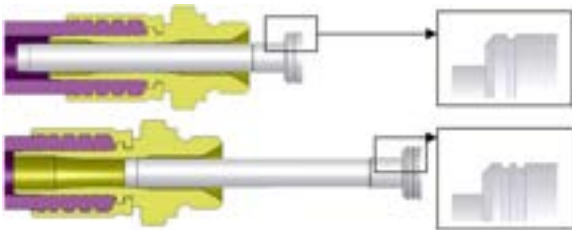
## TMBS

Code	Tubo
TMBS-00-03	3/16"
TMBS-00-04	1/4"
TMBS-00-05	5/16"
TMBS-00-06	3/8"
TMBS-00-08	1/2"
TMBS-00-10	5/8"
TMBS-00-12	3/4"
TMBS-00-16	1"
TMBS-00-20	1,1/4"
TMBS-03-20	Kit 3/16"-1,1/4"
TMBS-00-24	1,1/2"
TMBS-00-32	2"
TMBS-03-32	Kit 3/16"-2"

Technical data/Dati tecnici	
Material/Materiale	steel/acciaio
Surface treatment/ Trattamento superficiale	nickel plated nichelato



### User instructions

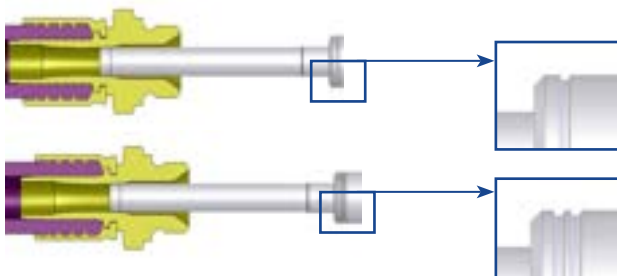
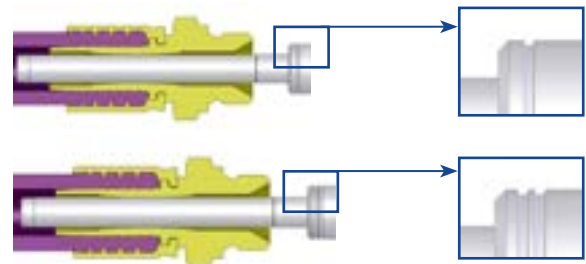


#### Correct swaging:

- Swaging phase is rightly made.
- "Go" side (signed with one line) is not stopped from internal deformation of insert.
- "Not Go" side (signed with two lines) is correctly stopped from internal deformation of insert.

#### Uncorrect swaging:

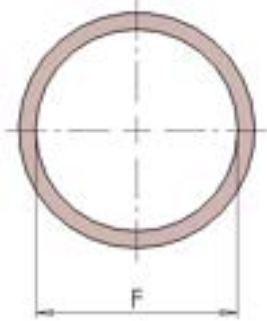
Swaging phase is not rightly made. Both "Go" side (signed with one line) and "Not go" side (signed with two lines) are not stopped from internal deformation of insert. Decrease swaging diameter (0,1 mm each step) until right swaging dimension.



#### Uncorrect swaging:

Item has been too swaged. Both "Go" side (signed with one line) and "Not go" side (signed with two lines) are stopped from too high internal deformation of insert. Too high change of internal shape cannot guarantee right performance on application.

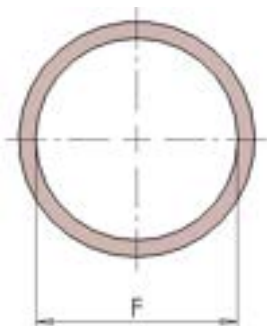
## RM00



### Metric copper washer

Part number	Dimensions
	F
RM00-06	M6
RM00-08	M8
RM00-10	M10
RM00-12	M12
RM00-14	M14
RM00-16	M16
RM00-18	M18
RM00-20	M20
RM00-20-26	M20
RM00-22	M22
RM00-26	M26
RM00-28-34	M28
RM00-30	M30

## RG00

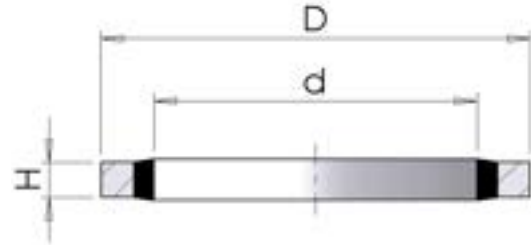


### BSPP copper washer

Part number	Dimensions
	F
RG00-02	G 1/8"
RG00-04	G 1/4"
RG00-06	G 3/8"
RG00-08	G 1/2"
RG00-10	G 5/8"
RG00-12	G 3/4"
RG00-16	G 1"
RG00-20	G 1.1/4"
RG00-24	G 1.1/2"
RG00-32	G 2"

# RBM0

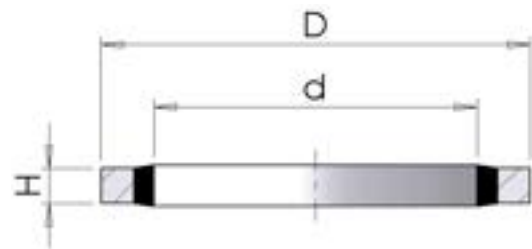
## Metric Bonded Seal



Part number	Dimensions		
	F	D	H
RBM0-05	M5	8.4	1.2
RBM0-06	M6	13.2	1.2
RBM0-08	M8	14.2	1.2
RBM0-10	M10	18.4	2
RBM0-14	M14	22.2	2
RBM0-16	M16	25.4	2
RBM0-18	M18	26.9	2.3

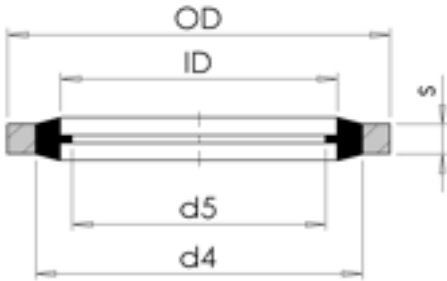
# RB00

## BSPP seal bonded



Part number	Dimensions		
	F	D	H
RB00-02	G 1/8"	14	2
RB00-04	G 1/4"	20.6	2
RB00-06	G 3/8"	23.9	2
RB00-08	G 1/2"	28.7	2
RB00-10	G 5/8"	31.8	2
RB00-12	G 3/4"	35	2
RB00-16	G 1"	42.9	2.5
RB00-20	G 1.1/4"	52.5	2.5
RB00-24	G 1.1/2"	58.7	3.2
RB00-32	G 2"	73	2.5

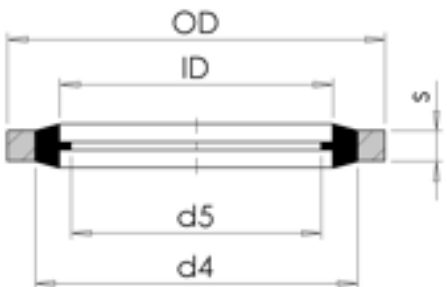
## RBMA



### Metric Self-centering Bonded Seal

Part number	Dimensions					Thread
	ID	OD	d4	d5	s	
RBMA-04	4.5	7	5.4	3.3	1	M4
RBMA-08	8.7	14	10.4	6.4	1	M8
RBMA-10	10.7	16	12.4	8.05	1.5	M10
RBMA-12	12.7	18	14.4	10.2	1.5	M12
RBMA-14	14.7	22	16.4	11.38	1.5	M14
RBMA-16	16.7	24	18.4	13.41	1.5	M16
RBMA-18	18.7	26	20.4	14.76	1.5	M18
RBMA-20	20.7	28	22.5	16.76	1.5	M20
RBMA-22	22.7	30	24.4	18.74	2	M22

## RBGA



### BSP Self-centering Bonded Seal

Part number	Dimensions					Thread
	ID	OD	d4	d5	s	
RBGA-02	10.37	15.88	11.84	8.26	2	1/8
RBGA-04	13.74	20.57	15.21	11.18	2	1/4
RBGA-06	17.28	23.8	18.75	14.76	2	3/8
RBGA-08	21.54	28.58	23.01	18.24	2.47	1/2
RBGA-10	23.49	31.75	24.97	20.27	2.47	5/8
RBGA-12	27.05	34.93	28.53	23.83	2.47	3/4
RBGA-14	30.81	38.1	32.29	27.51	2.47	7/8
RBGA-16	33.89	42.8	36.88	29.92	3.4	1
RBGA-20	42.93	52.38	45.93	38.45	3.4	1.1/4
RBGA-24	48.44	58.6	51.39	44.45	3.4	1.1/2
RBGA-28	54.89	69.85	58.3	50.42	3.4	1.3/4
RBGA-32	60.58	73.03	63.63	56.26	3.4	2
RBGA-40	76.08	90.17	79.38	71.5	3.4	2.1/2

-Also available in 304 stainless steel version, code ex. XRBGA-02

## O-Ring for SAE J 518 Flange (3000 PSI and 6000 PSI)



Part number	rif. Usa	rif. Eng.	d1	d2	Flangia	
					Pollici	dash
8-4075	2-210	4075	18.64	3.53	1/2	08
8-4100	2-214	4100	24.99	3.53	3/4	12
8-4131	2-219	4131	32.92	3.53	1	16
8-4150	2-222	4150	37.69	3.53	1-1/4	20
8-4187	2-225	4187	47.22	3.53	1-1/2	24
8-4225	2-228	4225	56.74	3.53	2	32
8-4275	2-232	4275	69.44	3.53	2-1/2	40
8-4337	2-237	4337	85.32	3.53	3	48
8-4387	2-241	4387	98.02	3.53	3-1/2	56
8-4437	2-245	4437	110.72	3.53	4	64

## Elastomeric seal for Male BSP / Metric



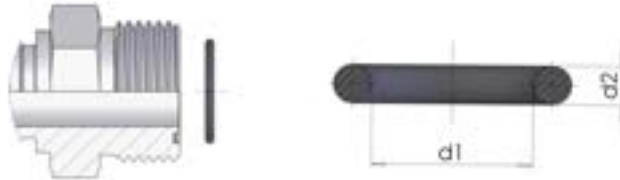
Part number	SIZE	d6	d7	L5	L6	FILETTATURA	
						Metrica	Pollici
8-E10	10	8.4	11.9	1	0.5	M10x1	1/8"-28
8-E12	12	9.8	14.4	1.5	0.8	M12x1,5	-
8-E14	14	11.6	16.5	1.5	0.8	M14x1,5	1/4-19
8-E16	16	13.8	18.9	1.5	0.8	M16x1,5	-
8-E17	17	14.7	18.9	1.5	0.8	-	3/8-19
8-E18	18	15.7	20.9	1.5	0.8	M18x1,5	-
8-E20	20	17.8	22.9	1.5	0.8	M20x1,5	-
8-E21	21	18.5	23.9	1.5	0.8	-	1/2-14
8-E22	22	19.6	24.3	1.5	0.8	M22x1,5	-
8-E27	27	23.9	29.2	1.5	0.8	M26x1,5 M27x2	3/4-14
8-E33	33	29.7	35.7	2	1	M33x2	1-11
8-E42	42	38.8	45.8	2	1	M42x2	1.1/4-11
8-E48	48	44.7	50.7	2	1	M48x2	1.1/2-11

## O-Ring for Metric Male (ISO 6149)



Part number			FILETTATURA	
	d1	d2	Metrica	dash
8MI-8-8.1X1.6	8.1	1.6	M10x1	10
8MI-8-9.3X2.2	9.3	2.2	M12x1,5	12
8MI-8-11.3X2.2	11.3	2.2	M14x1,5	14
8MI-8-13.3X2.2	13.3	2.2	M16x1,5	16
8MI-8-15.3X2.2	15.3	2.2	M18x1,5	18
8MI-8-19.3X2.2	19.3	2.2	M22x1,5	22
8MI-8-23.6X2.9	23.6	2.9	M27x2	27
8MI-8-29.6X2.9	29.6	2.9	M33x2	33
8MI-8-38.6X2.9	38.6	2.9	M42x2	42
8MI-8-44.6X2.9	44.6	2.9	M48x2	48

## O-Ring for ORFS Male



Part number	rif. Usa	rif. Eng.	d1	d2	FILETTATURA	
					UNF	dash
8-107	2-11	2031	7.66	1.78	9/16x18	06
8-110	2-12	2037	9.25	1.78	11/16x16	09
8-2050	2-14	2050	12.42	1.78	13/16x16	11
8-2062	2-16	2062	15.6	1.78	1x14	13
8-2075	2-18	2075	18.77	1.78	1-3/16x12	14
8-2080	2-21	2080	23.52	1.78	1-7/16x12	15
8-2118	2-25	2118	29.87	1.78	1-11/16x12	21
8-2150	2-29	2150	37.82	1.78	2x12	32

## O-Ring for BSPP cone



Part number	rif. Usa	rif. Eng.	d1	d2	FILETTATURA	
					Pollici	dash
8-5.5x1	-	-	5.5	1	1/4-19	04
8-7.1x1.6	-	-	7.1	1.6	3/8-19	06
8-11.1x1.6	-	-	11.1	1.6	1/2-14	08
8-2056	2-15	2056	14	1.78	5/8-14	10
8-15.1x1.6	-	-	15.1	1.6	3/4-14	12
8-2087	2-20	2087	21.95	1.78	1-11	16
8-2112	2-24	2112	28.3	1.78	1.1/4-11	20
8-2118	2-25	2118	29.87	1.78	1.1/2-11	24
8-2-32	2-32	2187	47.37	1.78	2-11	32

## O-Ring for Metric 24°



Part number	d1	d2	DKOL	DKOS	tube
	8-4x1.5	4	1.5	M12x1,5	M14x1,5
8-6x1.5	6	1.5	M14x1,5	M16x1,5	8
8-7.5x1.5	7.5	1.5	M16x1,5	M18x1,5	10
8-9x1.5	9	1.5	M18x1,5	M20x1,5	12
8-10x2	10	2	-	M22x1,5	14
8-12x2	12	2	M22x1,5	M24x1,5	15-16
8-15x2	15	2	M26x1,5	-	18
8-16.3x2.4	16.3	2.4	-	M30x2	20
8-20x2	20	2	M30x2	-	22
8-20.3x2.4	20.3	2.4	-	M36x2	25
8-26x2	26	2	M36x2	-	28
8-25.3x2.4	25.3	2.4	-	M42x2	30
8-32x2.5	32	2.5	M45x2	-	35
8-33.3x2.4	33.3	2.4	-	M52x2	38
8-38x2.5	38	2.5	M52x2	-	42

## O-Ring for "K" male



Part number	d1	d2	FILETTATURA		
			Metrica	Pollici	dash
8-10x2	10	2	M22X1.5	1/8"-28	02

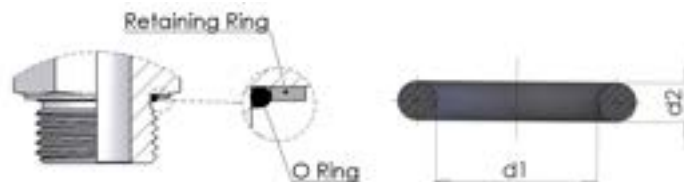


## O-Ring for "K" insert (for gun)



Part number	FILETTATURA			
	d1	d2	Pollici	dash
8-105	6.07	1.78	1/8"-28	02

## O-Ring for BSP MALE (ISO 1179-3)



Part number	FILETTATURA					
	rif. Usa	rif. Eng.	d1	d2	Pollici	dash
8-8X1.88	-	-	7.97	1.88	1/8-28	02
8-113	2-111	3043	10.78	2.62	1/4-19	04
8-118	2-113	3056	13.95	2.62	3/8-19	06
8-123	5-256	123	17.86	2.62	1/2-14	08
8-3093	2-119	3093	23.47	2.62	3/4-14	12
8-29.47X3.53	-	-	29.47	3.53	1-11	16
8-37.69X3.53	2-222	4150	37.69	3.53	1.1/4-11	20
8-4175	2-224	4175	44.04	3.53	1.1/2-11	24

## O-Ring for Metric Male



Part number	FILETTATURA			
	d1	d2	Metrica	dash
8-8X1.8	8	1.8	M10x1	10
8-9.3X2.2	9.3	2.2	M12x1,5	12
8-11.3X2.2	11.3	2.2	M14x1,5	14
8-13.3X2.2	13.3	2.2	M16x1,5	16
8-3062	15.54	2.62	M18x1,5	18
8-19X2.65	19	2.65	M22x1,5	22
8-23.47X2.95	23.47	2.95	M27x2	27
8-29.4X3.1	29.4	3.1	M33x2	33
8-38X3.5	38	3.5	M42x2	42
8-4175	44.04	3.53	M48x2	48

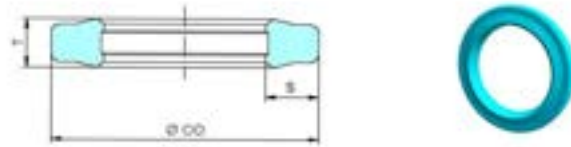
## O-Ring for SAE Male (ISO 11926)



Part number	d1	d2	FILETTATURA	
			UNF	dash
8-8.92x1.83	8.92	1.83	7/16x20	04
8-10.52x1.83	10.52	1.83	1/2x20	05
8-11.89x1.98	11.89	1.98	9/16x18	06
8-16.36x2.21	16.36	2.21	3/4x16	08
8-19.18x2.46	19.18	2.46	7/8x14	10
8-23.47x2.95	23.47	2.95	1-1/16x12	12
8-29.74x2.95	29.74	2.95	1-5/16x12	16
8-37.47x3	37.47	3	1-5/8x12	20

# GPP0

Polyurethane seal for SAE J 518 flange ( 3000 PSI and 6000 PSI ) and Cat" flanges



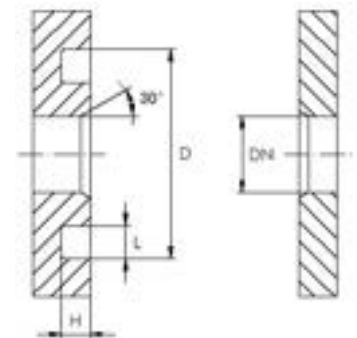
**Features:**

- **Standard material:** Pu41 - Blue polyurethane 93 shore A
- **Max temperature:** -30°C + 100°C
- **Max working pressure:** 610 bar
- Good abrasion resistance
- Very high resistance to extrusion
- Low compression set
- The sealing edge offers a very good sealing functions
- Usable for rogh surface finish

Standard seals are supplied in NBR 70. On request even in NBR 90, FPM e in EPDM.

Part Number	Dimensions			
	Size	OD	S	T
GPP0-08	1/2"	25.5	3.8	3.4
GPP0-12	3/4"	31.8	3.8	3.4
GPP0-16	1"	39.6	3.8	3.4
GPP0-20	1.1/4"	44.5	3.8	3.4
GPP0-24	1.1/2"	53.8	3.8	3.4
GPP0-32	2"	63.4	3.8	3.4

Size	DN	D	H	L
		Min-Max	Min-Max	Min-Max
1/2"	13	25.40-25.83	2.79-2.92	3.94-4.45
3/4"	19	31.75-31.88	2.79-2.92	3.94-4.45
1"	25	39.62-39.75	2.79-2.92	3.94-4.45
1.1/4"	32	44.45-44.58	2.79-2.92	3.94-4.45
1.1/2"	38	53.72-53.98	2.79-2.92	3.94-4.45
2"	51	62.50-63.25	2.79-2.92	3.94-4.45



Comparison between different features of elastomers

MATERIAL:

Features	NBR	FPM	EPDM
Compression set	1	1	3
Resistance to tearing	2	2	3
Resistance to abrasion	2	2-3	2
Resistance to ageing	4	1	2
Ozone resistance	4	1	2
Resistance to oil and greasy	2	1	5
Resistance to combustibles	4**	2**	5
Resistance to hot water (°C)	80**	80**	130
Resistance to steam (°C)	-	-	130
Resistance to warmth standard materials (°C)	100	200	130
Resistance to warmth special materials (°C)	120	-	-
Resistance to standard materials low temperature (°C)	-30	-15	-45
Resistance to special materials low temperature (°C)	-50	-35	-

Legend:

1 Excellent / 2 good / 3 medium / 4 low / 5 weak

\* short length / \*\* best result only with special materials

## BOXG-BS-70

Box O-ring NBR 70 shore

British standard

ASTM D - 2000 SAE J200

30 Sizes = 382 PIECES



## BOXH-MS-70

Box O-ring NBR 70 shore

Metric standard

ASTM D - 2000 SAE J200

30 Sizes = 382 PIECES



Part number	Nominal sizes			Q.ty nr.
	I/D	O/D	Section	
8-2012	2.90	6.46	1.78	20
8-102	3.68	7.24	1.78	20
8-103	4.48	8.04	1.78	20
8-2021	5.28	8.84	1.78	20
8-105	6.07	9.63	1.78	20
8-107	7.65	11.21	1.78	20
8-110	9.25	12.81	1.78	20
8-3037	9.19	14.43	2.62	13
8-113	10.77	16.01	2.62	13
8-3050	12.37	17.61	2.62	13
8-118	13.94	19.18	2.62	13
8-3062	15.54	20.78	2.62	13
8-3068	17.12	22.36	2.62	13
8-124	18.72	23.96	2.62	13
8-4075	18.64	25.70	3.53	10
8-4081	20.22	27.28	3.53	10
8-4087	21.82	28.88	3.53	10
8-4083	23.39	30.45	3.53	10
8-4100	24.99	32.05	3.53	10
8-4106	26.57	33.63	3.53	10
8-4112	28.17	35.23	3.53	10
8-29.74X3.53	29.74	36.80	3.53	10
8-4125	31.34	38.40	3.53	10
8-4131	32.92	39.98	3.53	10
8-4137	34.52	41.58	3.53	10
8-4143	36.09	43.15	3.53	10
8-37.69X3.53	37.69	44.75	3.53	10
8-6150	37.47	48.13	5.33	7
8-6162	40.64	51.30	5.33	7
8-6175	43.82	54.48	5.33	7

Part number	Nominal sizes			Q.ty nr.
	I/D	O/D	Section	
8-3X2	3.00	7.00	2.00	18
8-4X2	4.00	8.00	2.00	18
8-5X2	5.00	9.00	2.00	18
8-6X2	6.00	10.00	2.00	18
8-7X2	7.00	11.00	2.00	17
8-8X2	8.00	12.00	2.00	17
8-10X2	10.00	14.00	2.00	17
8-10X2.5	10.00	15.00	2.50	14
8-11X2.5	11.00	16.00	2.50	14
8-12X2.5	12.00	17.00	2.50	14
8-14X2.5	14.00	19.00	2.50	14
8-16X2.5	16.00	21.00	2.50	14
8-17X2.5	17.00	22.00	2.50	14
8-19X2.5	19.00	24.00	2.50	14
8-19X3	19.00	25.00	3.00	12
8-20X3	20.00	26.00	3.00	12
8-22X3	22.00	28.00	3.00	12
8-24X3	24.00	30.00	3.00	12
8-25X3	25.00	31.00	3.00	12
8-27X3	27.00	33.00	3.00	12
8-28X3	28.00	34.00	3.00	12
8-30X3	30.00	36.00	3.00	12
8-32X3	32.00	38.00	3.00	12
8-33X3	33.00	39.00	3.00	12
8-35X3	35.00	41.00	3.00	12
8-36X3	36.00	42.00	3.00	12
8-38X3	38.00	44.00	3.00	12
8-38X4	38.00	46.00	4.00	9
8-42X4	42.00	49.00	4.00	9
8-45X4	45.00	52.00	4.00	9

## BOXBG

### BSP -Self-centering bonded seal kit

The self-centering Bonded Seal kit includes:



Part number	Dimensions				
	ID	OD	d4	d5	s
RBGA-02	10.37	15.88	11.84	8.26	2
RBGA-04	13.74	20.57	15.21	11.18	2
RBGA-06	17.28	23.8	18.75	14.76	2
RBGA-08	21.54	28.58	23.01	18.24	2.47
RBGA-12	27.05	34.93	28.53	23.83	2.47
RBGA-16	33.89	42.8	36.88	29.92	3.4

## PSPT-PU\_ \_

### Standard projectiles

Flexible polyurethane



Part number	I.D.		pcs
	Inch	mm	
PSPT-PU05	3/16"	3,5 - 5	100
PSPT-PU07	1/4"	4,5 - 7	100
PSPT-PU10	5/16"	6 - 9	100
PSPT-PU12	3/8"	7 - 11	100
PSPT-PU14	1/2"	9 - 14	100
PSPT-PU18	5/8"	11 - 17	50
PSPT-PU22	3/4"	13 - 19	50
PSPT-PU26	1"	16,5 - 25	50
PSPT-PU30	1-1/4"	20 - 31	20
PSPT-PU40	1-1/2"	25 - 40	20
PSPT-PU55	2"	32 - 55	20

## PSPT06-50

### Classic cleaner gun

Cast aluminium



Part number	I.D.	
	Inch	mm
PSPT06-50	3/16" to 2"	5 to 6



## PSPT-UU \_ \_

### Hose nozzle

Black thermoplast



Part number	I.D.
	Inch
PSPT-UU04	3/16"
PSPT-UU06	1/4"
PSPT-UU08	5/16"
PSPT-UU10	3/8"
PSPT-UU13	1/2"
PSPT-UU16	5/8"
PSPT-UU19	3/4"
PSPT-UU25	1"
PSPT-UU32	1-1/4"
PSPT-UU38	1-1/2"
PSPT-UU50	2"

## PSPT-UU \_ \_ - STEEL

### Hose nozzle (steel)

Nickel-plated steel

For the nozzles from PSPT UU04-STEEL-to-PSPT UU32-STEEL is required the use of the adapter **PSPT-AD**.



Part number	I.D.
	Inch
PSPT-UU04	3/16"
PSPT-UU06	1/4"
PSPT-UU08	5/16"
PSPT-UU10	3/8"
PSPT-UU13	1/2"
PSPT-UU16	5/8"
PSPT-UU19	3/4"
PSPT-UU25	1"
PSPT-UU32	1-1/4"
PSPT-UU38	1-1/2"
PSPT-UU50	2"

## KIT CLEANER

### Hose cleaning set

PSPT06-50-KIT CLASSIC

Kit includes :

- 1 Classic cleaner gun
- 11 Thermoplastic hose nozzles (3/16" - 2")
- 1 Protective carrying case



PSPT06-50-KIT STEEL

Kit includes :

- 1 Classic cleaner gun
- 11 Steel hose nozzles (3/16" - 2")
- 1 Protective carrying case







## Analytic Index

TFA201KI	3	TFS00H2	75
TFA202KI	4	TFS0008	76
TFD2012	5	TFS0018	77
TFD2022	6	TFS00HP	78
TFE201K	7	TFS00MP	79
TFE202K	8	TF000T1	82
TFS0017	9	TF00LTC	83
TSR04SP	10		
TFDM4SP	11		
TFS0006I	12		
TFE02TEI	13		
TFE03TEI	14		
TFS0005	15		
TFS0004	16		
TFDH011B	19		
TFDH021B	20		
TFDL012N	21		
TFDL022N	22		
TFE2PF2	23		
TFE2P15	24		
THE201K	25		
THE202K	26		
THE2M2K	27		
THE0T3K	28		
TFDR45H	29		
TFDR013	30		
TFDR015	31		
TIB2021	34		
TIB2028	35		
TIB2035	36		
TIB2042	37		
TIS0021	38		
TIS0028	39		
TIS0035	40		
TIS0042	41		
TFDC011B	45		
THL201K	46		
THL202K	47		
TZE101K	48		
TZE102K	49		
THE2J2K	50		
TFDE011	51		
THE0G1K	52		
TTRK200	53		
TTRK250	54		
TTRK350	55		
THD0500	56		
TSG0042	57		
THS00JG	58		
THEMMDR	59		
TFN001K TFB001K	60		
TFN002K TFB002K	61		
TEB0E28 TEN0E28	62		
TEB0E42 TEN0E42	63		
TCB2E28 TCN2E28	64		
TCB2E42 TCN2E42	65		
TFW0070	66		
TFW0085	67		
TFW0110 TFW0100	68		
TFW0125 TFW0120	69		
TFW0145 TFW0135	70		
TFS0007	73		
TFS00H1	74		

## Sections Index

<b>INTERNATIONAL STANDARDS</b>	<b>1</b>	INTERPUMP Hyblast 18k	69
Hypress EASY K 1SC	3	INTERPUMP Hyblast 20k	70
Hypress EASY K 2SC	4	<b>Thermoplastic</b>	<b>71</b>
INTERPUMP Hypress One 1SN	5	SAE 100R7	73
INTERPUMP Hypress Two 2SN	6	One high tensile steel wire braid	74
INTERPUMP Hypress 1SC	7	Two high tensile steel wire braids	75
INTERPUMP Hypress 2SC	8	SAE 100R8	76
INTERPUMP Hypress R17	9	R18 Low temperature	77
INTERPUMP Hypress FOUR SP	10	INTERPUMP HyUltra	78
INTERPUMP Hypress 4SP	11	Mini-flexible	79
Hypress UniLock	12	<b>PTFE</b>	<b>80</b>
Hypress 2TE	13	P.T.F.E. - T1	82
EN 854 3TE	14	P.T.F.E. - LTC	83
SAE 100R5	15	<b>Accessories</b>	<b>85</b>
INTERPUMP Hy-VACUUM - SAE 100R4	16		
<b>HIGH PERFORMANCE</b>	<b>17</b>		
INTERPUMP HyCelsius 1SN	19		
INTERPUMP HyCelsius 2SN	20		
INTERPUMP HyFreeze 1SN	21		
INTERPUMP HyFreeze 2SN	22		
INTERPUMP PilotFlex 120	23		
INTERPUMP Pilot Plus 150	24		
INTERPUMP LongLife 1SC	25		
INTERPUMP LongLife 2SC	26		
INTERPUMP MARATHON 2SC	27		
INTERPUMP TREEATHLON	28		
INTERPUMP HyGreen 4SH	29		
INTERPUMP HyGreen R13	30		
INTERPUMP HyGreen R15	31		
<b>HYSOBARIC LINE</b>	<b>32</b>		
INTERPUMP HySO-FLEX 3K WB	34		
INTERPUMP HySO-FLEX 4K WB	35		
INTERPUMP HySO-FLEX 5K WB	36		
INTERPUMP HySO-FLEX 6K WB	37		
INTERPUMP HySO-FLEX 3K WS	38		
INTERPUMP HySO-FLEX 4K WS	39		
INTERPUMP HySO-FLEX 5K WS	40		
INTERPUMP HySO-FLEX 6K WS	41		
<b>SOLUTIONS FOR APPLICATIONS</b>	<b>42</b>		
INTERPUMP COMPRESSOR	45		
INTERPUMP LongLift 1SC	46		
INTERPUMP LongLift 2SC	47		
INTERPUMP LongLife Dual 1SC	48		
INTERPUMP LongLife Dual 2SC	49		
INTERPUMP HYJACK	50		
INTERPUMP HyRail	51		
INTERPUMP HyGEAR 1SC	52		
INTERPUMP HyTruck 200 bar	53		
INTERPUMP HyTruck 250 bar	54		
INTERPUMP HyTruck 350 bar	55		
INTERPUMP HySpir 500	56		
HyTRAKTION	57		
INTERPUMP Mega Jet	58		
INTERPUMP MEGADRILL	59		
INTERPUMP Jet 1SC	60		
INTERPUMP Jet 2SC	61		
INTERPUMP HyWASHER 4K	62		
INTERPUMP HyWASHER 6K	63		
INTERPUMP HyWASHER PLUS 4K	64		
INTERPUMP HyWASHER PLUS 6K	65		
INTERPUMP Hyblast 10k	66		
INTERPUMP Hyblast 12k	67		
INTERPUMP Hyblast 15k	68		



# INTERPUMP

FLUID SOLUTIONS 

Powered by I.M.M. Hydraulics



**I.M.M. Hydraulics Spa**  
[interpumpfluidsolutions.com](http://interpumpfluidsolutions.com)

Via Italia, 49-51  
66041 - Atessa (Ch) - Italy  
T. +39 (0) 0872 889225  
F. +39 (0) 0872 889226

