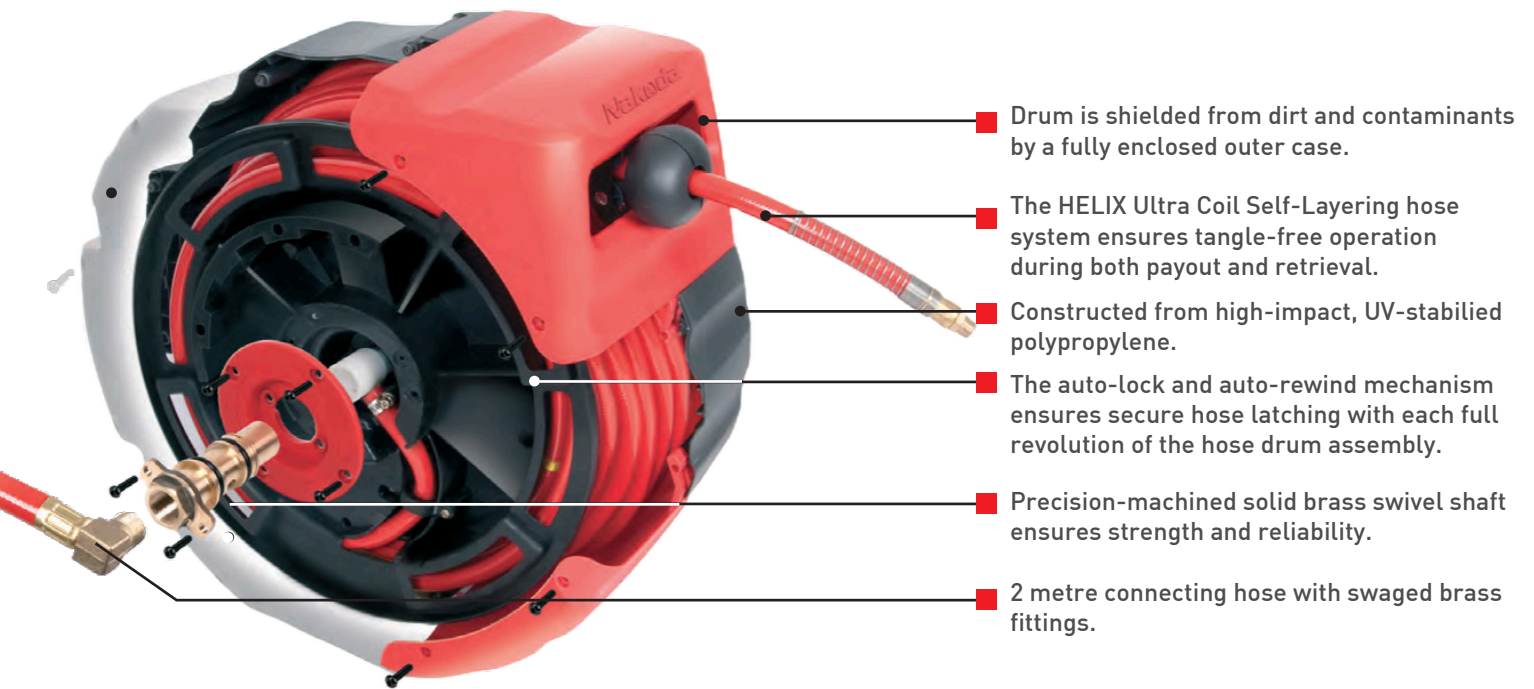


20 AIR/WATER
15 AIR/WATER
20 WATER

PRO SERIES



- Drum is shielded from dirt and contaminants by a fully enclosed outer case.
- The HELIX Ultra Coil Self-Layering hose system ensures tangle-free operation during both payout and retrieval.
- Constructed from high-impact, UV-stabilised polypropylene.
- The auto-lock and auto-rewind mechanism ensures secure hose latching with each full revolution of the hose drum assembly.
- Precision-machined solid brass swivel shaft ensures strength and reliability.
- 2 metre connecting hose with swaged brass fittings.



Get In Touch

If you're interested in the Pro-Series, you can get in touch with us using the details below. You can also explore our full range of Hose Reel services on the Kiowa website.

Industrial Hose, Hydraulics, & Associated Site Services

 **ALFAGOMMA** GROUP

Sleaford T: 01529 416200
 E: sales@kiowa.co.uk

Aberdeen T: 01224 890339
 E: aberdeensales@kiowa.co.uk

Teesside T: 01642 762266
 E: teessidesales@kiowa.co.uk

Glasgow T: 0141 7746200
 E: glasgowsales@kiowa.co.uk

Newcastle T: 0191 2709730
 E: newcastlesales@kiowa.co.uk

Corporate Site: www.kiowa.uk
Online Shop: www.kiowa.co.uk

PRO-SERIES RANGE

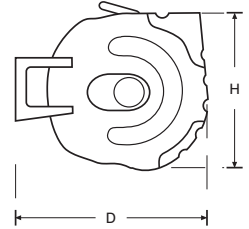
Pro Series 15

HR-PS15-12AW



Kiowa Pro Series 20

HR-PS20-10AW



Features & Benefits

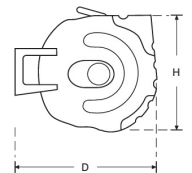
- High impact, UV stabilised polypropylene construction.
- Unit comes complete with fitted main hose assembly and 2 metre connecting/feed hose.
- Complete with fixed or 180° pivoting wall bracket. Covers a large span in the working area for increased control and ease of use.
- Includes the Helix Ultra Coil® technology self-layering hose system - for neat and tidy storage.
- Lightweight material construction.
- Suitable for both compressed air and water (up to 40°).
- Fold flat carry handle. Convenient for moving about and installation and removal from a static position.
- Hose guard supplied as standard, preventing kinking on the user end.
- Swivel outlet fitting.
- Solid Brass main swivel shaft and hose fittings.
- 2 years manufacturer's warranty excludes seals and hose assemblies.

Kiowa Series 20

HR-PS20-12W



- High impact and weather resistant UV stabilised Polypropylene construction.
- enclosed outer case protects the hose & drum against dirt and contaminants
- Auto lock and auto rewind mechanism provides positive latching every full revolution
- Complete with fixed or 180° pivoting wall bracket. The reel can be stored flat, safely and neatly against the wall when not in use.
- Reinforced PVC braided hose with an additional 2 metre connecting hose
- Lightweight material construction.
- Helix Ultra Coil® technology self-layering hose system.
- Fold flat carry handle. Convenient for moving from a static position
- Quality Brass hose connectors, tap fittings and water spray gun included
- Solid wall installation
- 2 years manufacturer's warranty excludes seals and hose assemblies.



SPECIFICATION

Product Code	Hose ID mm	Hose Length m	Working Pressure Bar	Inlet BSP	Outlet BSP	Weight kg	Height mm	Width mm	Depth mm
HR-PS15-12AW	12.5	15	20	1/2 Swivel Female	1/2 Swivel Male	9	445	235	560
HR-PS20-10AW	10	20	20	3/8 Swivel Female	3/8 Swivel Male	9	445	235	560
HR-PS20-12W	11.5	20	10	3/4 Swivel Female	Water Gun	9	445	235	560