



EQUESTRIAN
STABLING
IAE



IAE
Chassis, Freni, Sforzi
www.iae.it

CONTENTS

MOORLAND 3-4

FRONTAGES 5-6

PARTITIONS 7-8

EXTERNAL 9-10

DOORS & WINDOWS 11-12

LAYOUTS 13-16

ACCESSORIES 17-19

Paddock PENNING 20

CUSTOM BUILD 21

OUR SERVICE 22

For over 25 years we have been manufacturing Equestrian Stabling.

Our long-standing position within the industry, combined with our in-house advanced manufacturing techniques has enabled us to refine our Equestrian range to be durable, versatile and excellent value.

Tel: +44 (0)1782 339320
Email: equestrian@iae.co.uk



SCAN FOR
PRICE LIST



The image shows the interior of a large, modern stable. The structure features a high, vaulted ceiling with exposed wooden beams and a corrugated metal roof. The walls are made of vertical metal slats, and the floor is a smooth, light-colored concrete. On the left, there are several white metal stalls with wooden doors. A large window in the center provides a view of the outdoors, showing a red building and greenery. The lighting is bright, coming from natural light through the window and overhead fixtures.

MOORLAND

The Moorland range is designed to be a modular and standardised solution, allowing you to purchase the individual items you need and combine them to create your optimal solution. All aspects of the Moorland stabling range are manufactured using a combination of advanced manufacturing technology and high-quality materials, ensuring that the stabling you purchase will stand the test of time.

Key features:

- Stable fronts and partitions are available in three different lengths: 2970mm, 3570mm and 4170mm (post centres)
- Three different front options are available: bottom swing door, anti-weave sliding door and tack room door
- Universal any hand swing doors. Supplied from the factory left handed, however bolt on fittings allow for easy conversion to right hand
- Three different variations of partition are available: half grille, fully boarded or talk grille
- All infills created from 34mm recycled solid plastic tongue and groove boards
- The plastic infills are low maintenance, durable and weatherproof
- Additional accessories such as swivel feeders, anti-chew strips and anti-weave infill panels can be purchased at extra cost
- External split doors and window hatches are also available
- All stabling is supplied in kit form and requires assembly on site

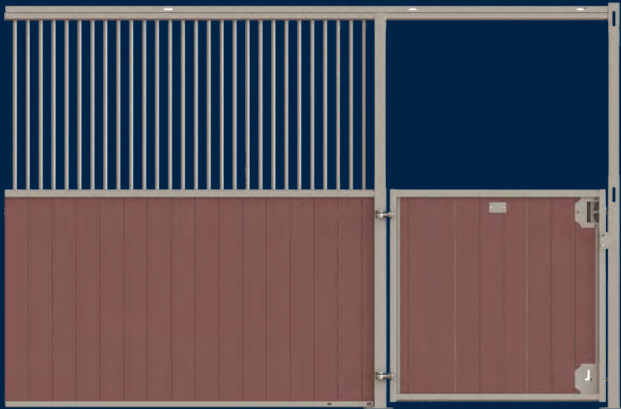


FRONTAGES



Sliding Door

- Standard widths: 2970mm, 3570mm or 4170mm post centres
- 1285mm anti-weave sliding door is suited to stabling arrangements where passage space is limited
- 70mm x 70mm posts provide the stabling with rigidity and strength
- 34mm plastic infill boards are durable and kick proof



Swing Door

- Standard widths: 2970mm, 3570mm or 4170mm post centres
- 1285mm swing style front door provides excellent access
- 70mm x 70mm posts provide the stabling with rigidity and strength
- 34mm plastic infill boards are durable and kick proof
- Recessed handles to prevent the horse from being able to open the door
- Kick bolt provides the swing door with strength

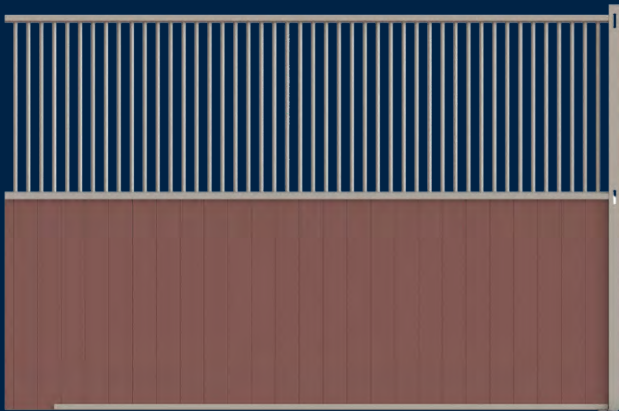


Tack Room Door

- Standard lengths: 3570mm post centres
- Includes a full height lockable swing door, panel and two posts
- The Lever Mortice Deadlock is recommended by most insurance companies as their preferred standard
- Fully boarded partition provides privacy and exclusion

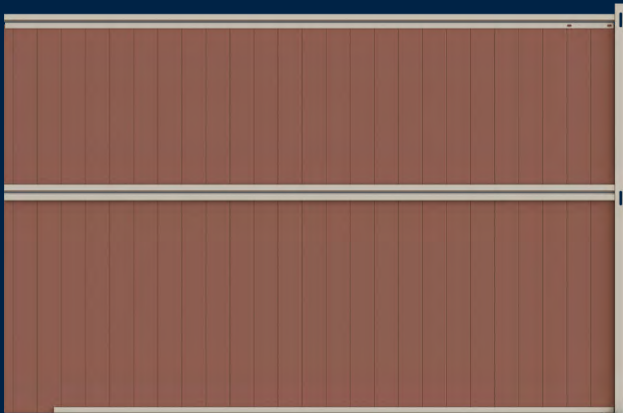


PARTITIONS



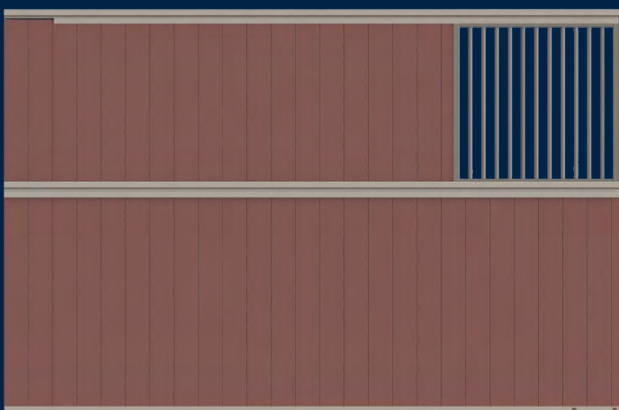
Half Grille

- Standard lengths: 2970mm, 3570mm or 4170mm post centres
- Suitable for use as a side or back partition
- Grille top allows the horse to see activity within the barn
- 34mm plastic infill boards on the bottom half are durable and kick proof



Fully Boarded

- Standard lengths: 2970mm, 3570mm or 4170mm post centres
- Suitable for use as a side or back partition
- Being Fully boarded prevents the horse from seeing activity in the barn and helps to prevent a through draught in the stable
- 34mm plastic infill boards are durable and kick proof



Talk Grille

- Standard lengths: 2970mm, 3570mm or 4170mm post centres
- Suitable for use as a side or back partition
- 940mm talk grille can be positioned anywhere along the top section of the partition
- Provides horses with a limited view of activity in the barn
- 34mm plastic infill boards are durable and kick proof



SCAN FOR
PRICE LIST

EXTERNAL

To complete your Equestrian building, our range of external doors and windows have been designed to offer a robust and high quality solution at a cost effective price.

Whether you require doors or windows, our external range all benefit from the following great features.

Key features:

- Steel framework is galvanised in-house to BS EN ISO 1461 to ensure longevity and the highest standards of quality
- 34mm recycled solid plastic tongue and groove boards which offer durability even in an external environment
- Recessed handles to improve safety
- Safe edged rails around all doors and window eliminate injuries to both the horse and handler



DOORS & WINDOWS



Split Door

- Designed to suit a gap of 1305mm wide x 2320mm high
- Featuring a 1235mm high swing door and a top hatch door, the horse has a view to the yard when stabled and the top hatch can be closed during adverse weather conditions
- Recessed handles remove the horses ability to open the door
- Kick bolt provides strength to the door



Tack Room Door

- Designed to suit a gap of 970mm wide x 2320mm high
- Features a full height lockable swing door
- The Lever Mortice Deadlock is recommended by most insurance companies as their preferred standard
- Fully boarded partition provides privacy and exclusion

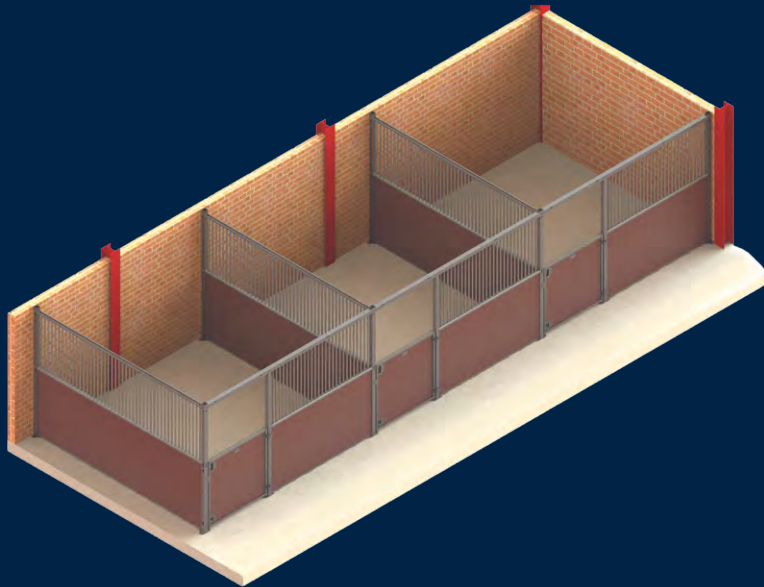


Boarded Window Hatch

- Designed to suit a 915mm square gap
- The window hatch provides horses with a view point to the outside world, encouraging stimulation and socialisation
- Brings an improved aesthetic to your equestrian yard



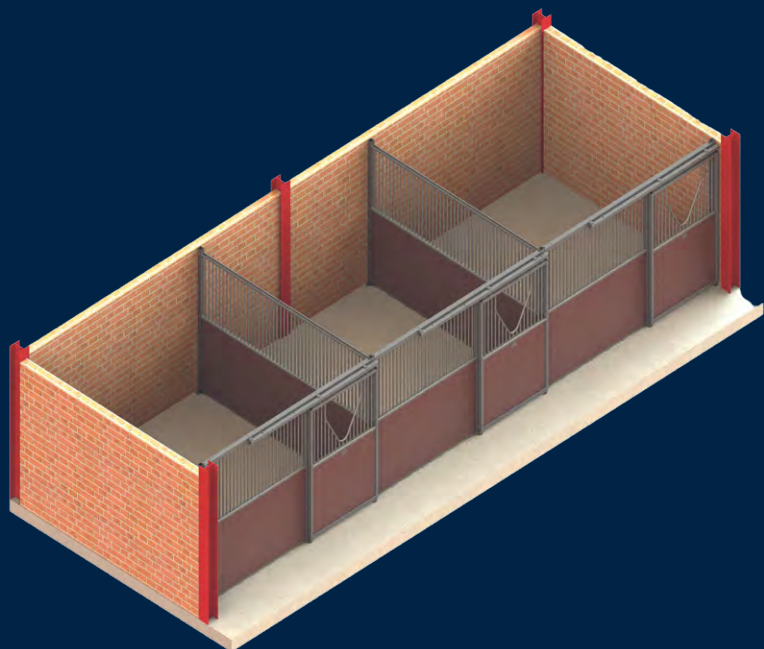
LAYOUTS



A3

The A3 Arrangement creates a simple internal 3 stable arrangement using Swing Door Frontages and Half Grille Partitions.

This type of arrangement is well suited to running along the exterior building wall.

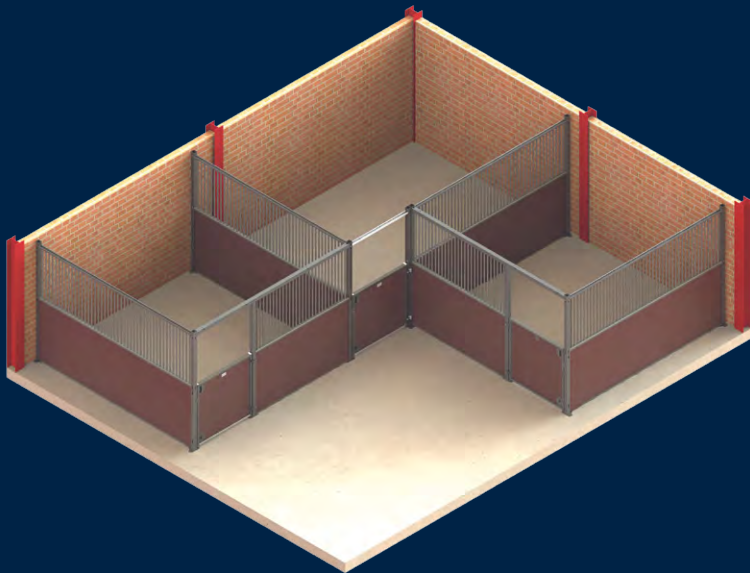


B10

Similar to the A3 Arrangement, the B10 generates a three stable solution, situated between exterior walls. Using three Sliding Doors and two Half Grille Partitions, this arrangement is simple, yet practical.



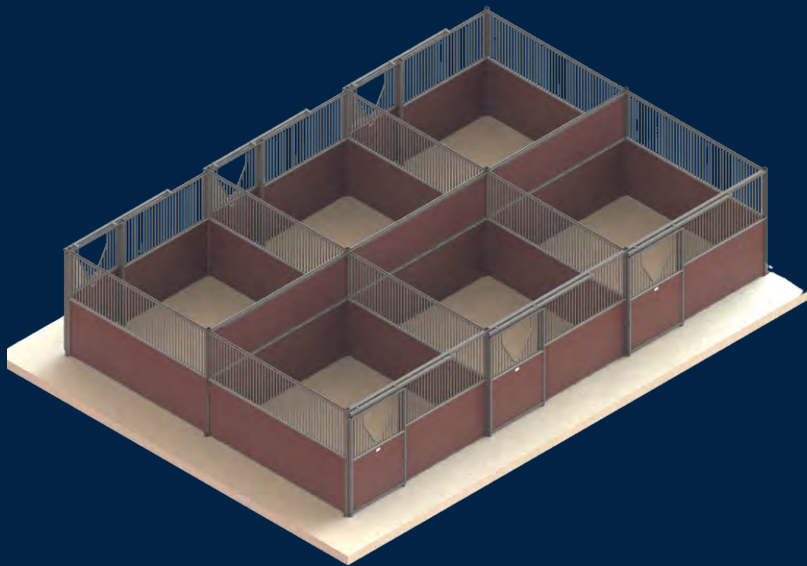
LAYOUTS



A12

To maximise space utilisation, the A12 adds a single Swing Door between two frontages at 90 degrees to one another to create a corner stable.

This style of arrangement is very functional when lining the exterior walls of a barn with stabling all the way around.



B7

Where you wish to run stables through the middle of a barn, the B7 creates an impressive back-to-back solution.

By running Fully Boarded partitions down the middle and adjoining Half Grille Partitions which are then fronted by Sliding Door Frontages, a stylish yet practical solution is delivered.

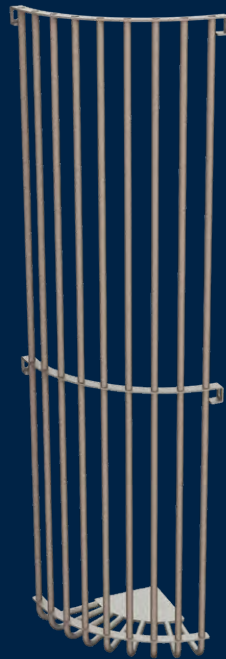


ACCESSORIES



Frontage with Feed Hatch

- Available as part of a Swing Door or Sliding Door Frontage
- 350mm x 980mm hatch is built into the panel
- Provides easy access to the hayrack allowing it to be filled quickly
- For use in conjunction with the Corner Hayrack



Corner Hayrack

- Designed to allow horses to feed in a natural position
- 1923mm high, constructed from galvanised steel to ensure durability
- For use in conjunction with the Frontage with Hatch



The Corner Hayrack shown in conjunction with the hatch panel behind.



Swivel Trough

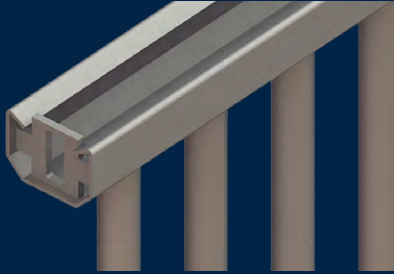
- A safe solution to feeding horses, allowing you to feed without entering the stable
- Includes a plastic trough which rotates through 180 degrees
- Can be added anywhere along a frontage
- Requires self assembly



Anti-chew Strip

- A galvanised sheet strip designed to prevent the horse from chewing the door
- Dimensions: 1125mm wide x 465mm high

ACCESSORIES



Magic Bracket

Use the MAGIC bracket to cut a panel down to a bespoke length whilst on site



Anti-weave Infill Panel

The infill panel is designed to safely keep the horse behind the frontage.



Corner Door

- A single swing door supplied with a hang and slam post, a door brace and top lintel
- Designed to sit between two frontage where they meet at 90 degrees, allowing for a corner stable to be created
- See arrangement A12



Corn Bins

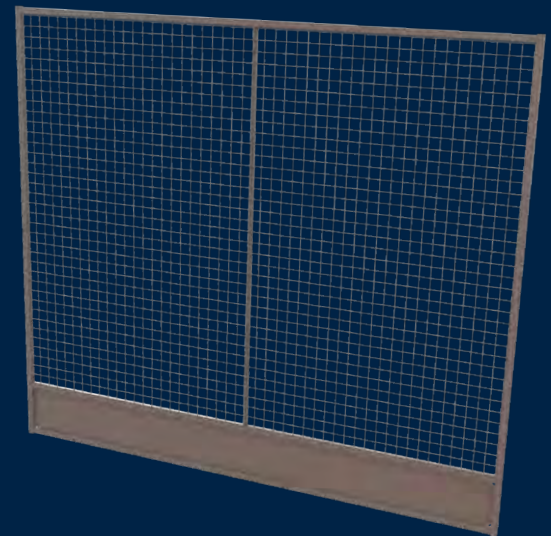
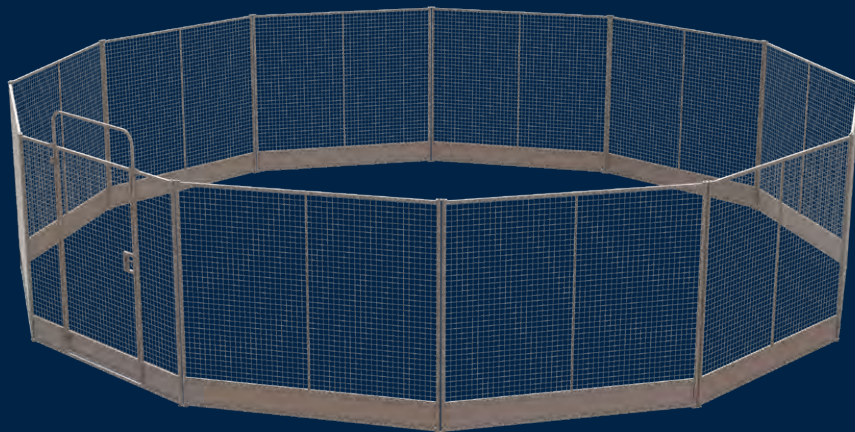
- Available in 2 lengths: 1200mm (630 litres) or 1600mm (840 litres)
- Supplied with partitions that segregate feed
- Keeps feed dry and contained
- Fully constructed from pre-galvanised sheet

Paddock Penning

Our Paddock Penning has been carefully designed to create a safe and controlled area for horses that is completely versatile.

Key features:

- Suitable for use as restrictive grazing, turning out foals and injured horses or for lunging/school horses
- Available in two standard sizes: 9.1m diameter (12 panels including a gate panel) and 15.2m diameter (20 panels including a gate panel)
- Adjustable in diameter by adding or removing panels
- 1255mm wide gate provides access to the pen
- 295mm high sheeted base prevents horses from pushing material such as sand out of the pen
- 2210mm high by 2500mm wide mesh panels provide the horse with good visibility of their surroundings
- Assembled using coupling rods, making it easy to adjust or move



CUSTOM BUILD

Through many years of experience within the industry, our dedicated team have gained a wealth of practical and technical knowledge which is available to support your project from concept to completion. These factors combined with the first-class manufacturing capabilities at our Headquarters in Stoke-on-Trent allow us to offer a tailored service, designed to meet all of your requirements.



OUR SERVICE

CONCEPT

The concept phase includes an initial call, to gain a better understanding of your ideas and requirements in order to ensure that your bespoke solution is fully tailored to satisfy your needs.

DESIGN

Our in-house design team will then refine those discussions into dynamic and detailed drawings that will accurately reflect all of your requirements.

MANUFACTURE

All of your equipment will be manufactured on-site at our headquarters in Stoke-on-Trent, where we are able to ensure the highest standards of quality from the initial welds right through to the Hot Dip Galvanising.

AFTERSALES SUPPORT

Our dedicated Customer Support team are on hand from the day of completion of your project to provide any further aftersales support that you may require.

If you require assistance planning your next project, do not hesitate to contact our experienced team as they are here to assist you.





T: +44 (0)1782 339320
equestrian@iae.co.uk
Mossfield Road, Adderley Green
Stoke on Trent, ST3 5BW
www.iae.co.uk/equestrian

