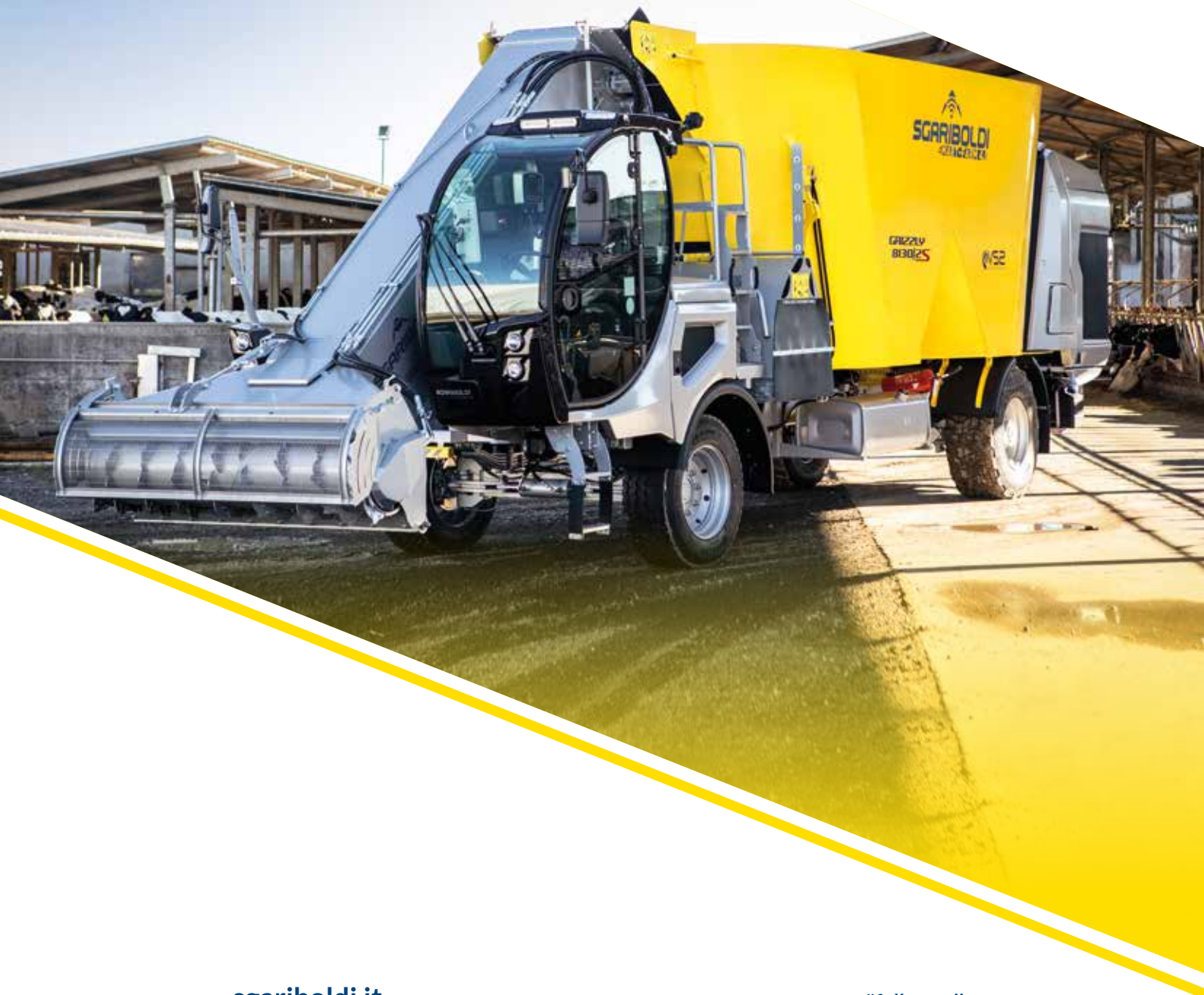




SELF-PROPELLED

Mixer feeders



ENG



SELF-PROPELLED

Mixer feeders



SGARIBOLDI S.r.l.

Via Pietro Nenni 15 | 26845 Codogno - Lodi (Italy) | Tel. (+39) 0377 430 405 | info@sgariboldi.it



[sgariboldi.official](https://www.instagram.com/sgariboldi.official)



[Sgariboldi](https://www.facebook.com/Sgariboldi)



[SGARIBOLDI Srl](https://www.linkedin.com/company/SGARIBOLDI-Srl)



[SgariboldiOfficial](https://www.youtube.com/SgariboldiOfficial)

[sgariboldi.it](https://www.sgariboldi.it)



INNOVATION
PERFORMANCE
PEOPLE

Satisfy your needs is our mission



CONTENTS

PROFILE	04
CUSTOM MADE	06
SELF-PROPELLED - MIXER FEEDER	08
6000 SERIES	10
7000 SERIES	12
8000 S SERIES	14
CAB	16
INTELLITECHNOLOGY	18
LOADING SYSTEM	20
MONOFEEDER	24
MAV 6200	28
COMBI 7200	30
GULLIVER	32
GULLIVER 6000	36
GULLIVER 7000	38
GULLIVER 8000 S	40
VS2	42
GRIZZLY 6100	46
GRIZZLY 7100	48
GRIZZLY 8100 S	50
GRIZZLY 8100 S TITANIUM	54
GRIZZLY 8100 S TITANIUM XL	56
ACCESSORIES	58
KOALA MD/S	60
SERVICE	62



OVER 50 YEARS OF EXPERIENCE

Founded in 1959, Sgariboldi has been manufacturing diet feeders since 1969. In 1987, constantly driven by innovation, it became the first company in Europe to come up with a self-propelled machine that mechanises the entire animal feed mixing and distribution cycle on its own, the Combitre.

Today, Sgariboldi designs and manufactures technologically-advanced diet feeders, which are highly regarded and utilised all around the world.

3 Exclusive Mixing Systems

The company's expertise is derived from the experience that it has gained in various work situations, thus allowing it to offer the most effective solutions designed for the farmer's specific needs.



As a workshop specialised in farm machinery repair, Sgariboldi began manufacturing a hay making machine (first patent).



Sgariboldi, at the top of the sector in Europe, introduced Combitre, one of first self-propelled feeder in the world which mechanised the complete zootechnical feeding cycle by itself. Combitre earned a technical innovation award at the Eima exhibition in Bologna.



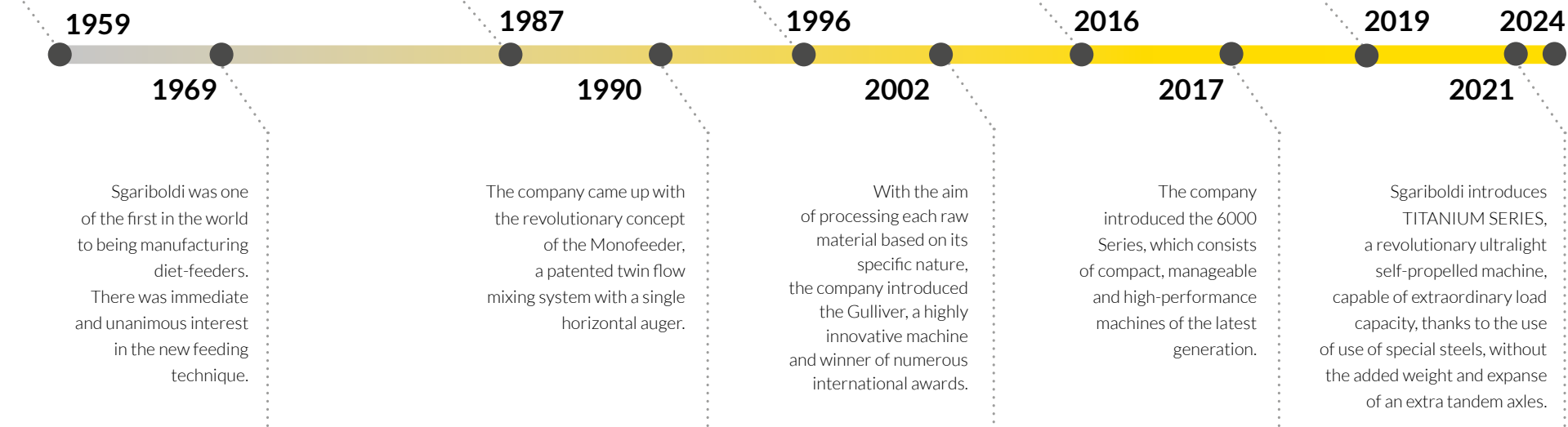
Sgariboldi multiplied its production potential, and opened a new location in Codogno, with a total area of 15,000 m² (161,500 ft²).



Sgariboldi launched Intellitechnology, an innovative system that automatically regulates each phase of the mixing cycle.



Pursuing even greater production efficiency objectives, Sgariboldi added a new work area to the existing structures, reaching a total corporate extension of 22,841 m² (246,000 ft²).





CUSTOM MADE MACHINES MADE UPON REQUEST

We get excited when our customers are satisfied. At Sgariboldi, customer satisfaction has always been a vital goal.

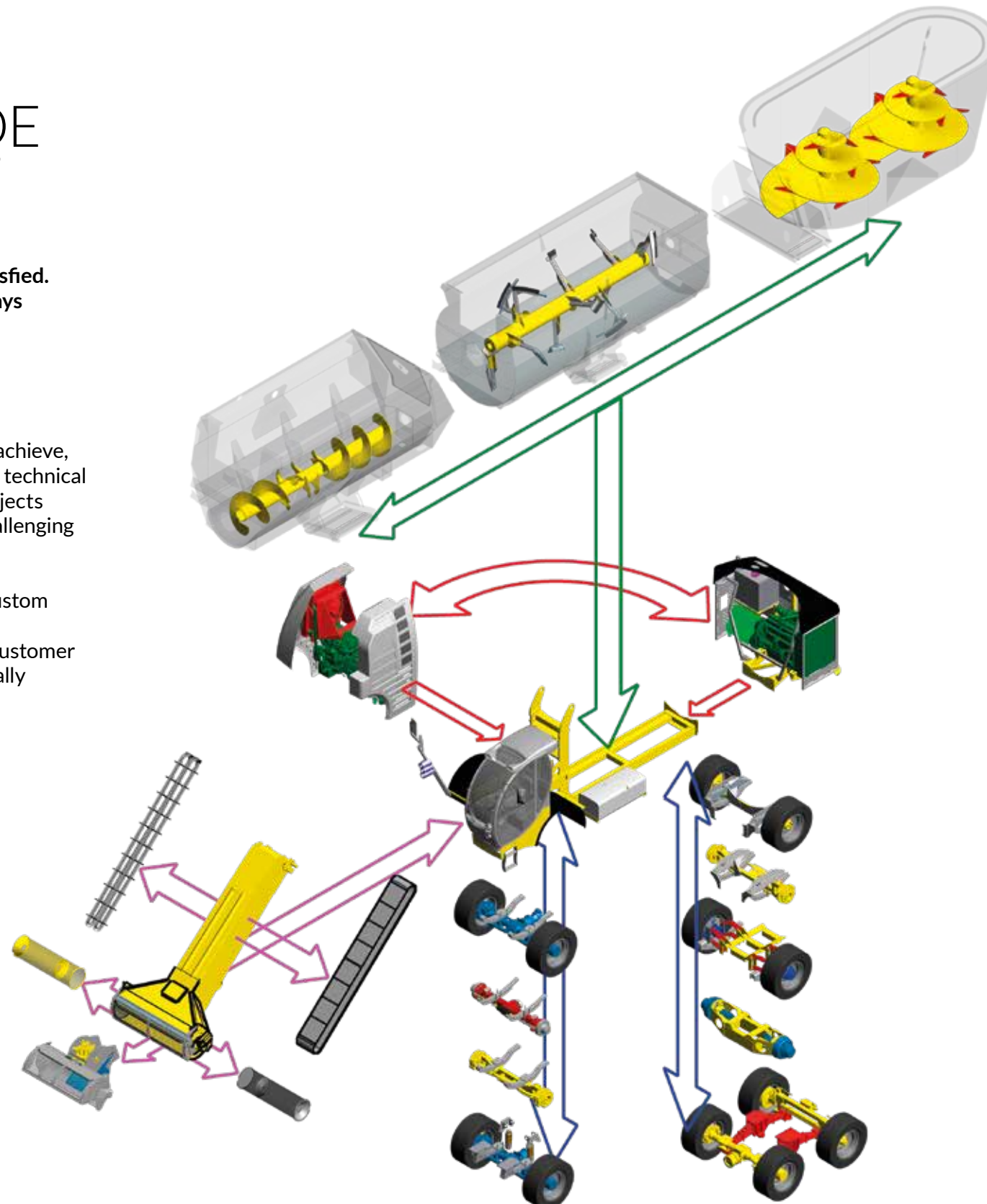
We value quality, and the details that make the difference.

Any specific needs, even the most difficult to achieve, are taken up by our qualified and experienced technical staff, who diligently work to come up with projects that are capable of meeting even the most challenging requirements.

Sgariboldi Special Operation is the highest custom made manufacturing expression that ensures a dedicated design, perfectly in line with the customer desires. The goal is to provide unique, and totally personalised solutions.



**Custom built
machines**



What is now
proved was once
only imagined

(William Blake)

Sgariboldi Precision Farming



- Perfect, constant and controlled rations without feed waste
- Guaranteed animal wellness
- Increase productivity thanks to precise ration management
- Data accessible at any time and from any type of device: PCs, Smartphones or Tablets
- Possibility of outfitting the machine with «NIR®»: an advanced infrared scanning system that allows immediate adjustment to ration by checking the humidity of the mixing ingredients
- Constant and continuous development of new technologies in collaboration with major research institutes, with the aim of obtaining the ideal mixture based on the operator's specific needs



BUILT TO LAST

Sgariboldi has always been dedicated to provide **reliable and long lasting products** to its customers.

The use of special steels and high-quality materials guarantees solid and high performance machines.

The company's pursuit of production excellence is confirmed by its collaboration with the best partners for the selection of the machines's components.

Our partners:



Stage V - Diesel Engine



Gulliver tecnologia
a flawless mixture, suitable also
for the preparation of compound
feed and concentrates

STAINLESS STEEL*inside*

Monofeeder:
the horizontal patented
mixing technology

VS.2:
clean cut of the fodder,
and excellent yield with hay
and silage



The perfect mixture start with loading

Sgariboldi's self-propelled diet feeders boast **large load capacities**, ensured by the presence of:

- A 1900 or 2200 mm wide loading drum, available in various configurations and ideal for cutting any type of product, designed to meet any farmer's requirements
- A 600 or 800 mm wide loading belt, for loading any type of product more quickly
- Loading drums with available power ratings up to 210 HP



6000 SERIES: THE PERFECT COMBINATION

The 6000 series, is a range of machines of the latest generation, designed to meet the specific requirements of farmers. Sgariboldi's experience led to the development of this series, which represents a perfect combination of compactness, agility and performance.

Agile and compact

Ideal for **small and medium-sized farms**, the exceptional dimensions allow the maximum maneuverability, even in the most narrow spaces.

The machine's excellent handling can be improved with the optional 4 wheel drive and steering systems.

- The **175 hp 4-cylinder VOLVO STAGE V** engine is placed transversely between the cab and the mixing tank in order to offer an excellent working view and ideal weight distribution
- Diesel engine available up to 218 hp

Among the lowest and narrowest machine available on the market



Standard innovative solutions

- Equipped with **FAN DRIVE**, an intelligent device that carries out an electronic control on the cooling needs of the diesel engine, allowing significant fuel savings and a remarkable noise reduction



Excellent weight distribution, for better machine balance during all work phases



7000 SERIES: COMPACT AND POWERFUL

The 7000 series is back on the market in a new and improved version, perfect to meet the needs of farmers who need a **compact size** machine but capable of great performance.

Best performance, compact size

Being an intermediate solution between the 6000 series and 8000 series, **7000 series** is the result of an accurate design which, accompanied by first-rate components, allows maximum performance with reduced power consumption, significant energy savings and maximum agility thanks to its small size.

Great agility
and reduced power
consumption



Steering angle
of 40°

First-class equipment

- The 218 hp 4-cylinder **VOLVO STAGE V** engine is placed transversely between the cab and the mixing tank in order to offer an excellent working view and ideal weight distribution
- Equipped with **FAN DRIVE**, an intelligent device that carries out an electronic control on the cooling needs of the diesel engine allowing significant fuel savings and a remarkable noise reduction
- The **limited-slip front axle** allows a steering angle of **almost 40 degrees**, ensuring great handling, that can be further increased by the 4-wheel steering (optional). The 4-wheel-drive version is also available as an option.
- Diesel engine available also up to 238 hp



8000 S SERIES: POWER AND CONTROL



With the aim of create a new standard and ferry our flagship series into the future, Sgariboldi launches 8000 S, a new series of self-propelled heavy duty that transcends the market and the classics design limitations, able to guarantee unrivaled performance combined with an immersive driving experience. Ideal for the large farms, the new 8000 S series stand out for the following features:

- **New design:** a sleek new look that embodies the Sgariboldi design philosophy, as well as offering an emotional experience to our customers
- **A vastly improved and enhanced hydraulic system** that limits dispersions and guarantees more power availability and lower fuel consumption, unrivaled in performance and efficiency
- **Powerful software:** conceived with I-Cab II and then transferred to Renesis II, enabling a total interaction with the machine. With an excellent controls standard the operator will experience ease and control like never before.
- **Improved load capacity** thanks to an excellent weight distribution
- **Enhanced cooling of the engine compartment**



The top of the line

A wide range of features makes the 8000 series complete and versatile:

- A 6-cylinder engine positioned at the rear
- Automatic transmission
- Rear wheel drive or 4 wheel drive
- 2 or 4 wheel steering
- Hydraulic suspensions with levelling system (*optional*)
- Equipped with one of the most advanced hydraulic systems on the market
- Mixing tank cover designed to reduce the amount of dust generated by the mixing system (*optional*)
- Reversible engine fan FLAXXAIRE which regulates the air flow according with the diesel engine heat exchange requirements, ensuring lower fuel consumption and noise reduction



JOHN DEERE
diesel engine up to 300 hp

A mixing tank cover designed to reduce the amount of dust generated by the mixing system (*optional*)



Maximum visibility
upwards and downwards



RENESES II

Top quality becomes standard

Based on the concept of I-Cab II, our most ambitious project in terms of technology and performance, Sgariboldi launches Renesis II, the new cabin for all **self-propelled mixers**.

An extremely intuitive workplace developed with advanced new functions, fully electronic, allowing very high standard of control during all operations.

Equipped with completely new ergonomics and renewed interiors, Renesis II guarantees maximum **comfort**, great **ease of use** and an extremely **precise** management of each work phase.

Features:

- Armrest <<Dinamic>>
- Larger and more comfortable workplace
- Increased visibility and brightness thanks to the bigger glass surfaces
- 10-inch display with integrated video-camera
- New graphics and new software, more powerful and intuitive
- Grammer air seat
- Improved and enhanced automatic climate control
- Total control of performance



+ ergonomics
+ comfort
in automotive style

Even more advanced
electronics and technology

I-CAB 2

The **evolution** of the **Smart Cab**

- Maximum comfort
- More spacious, 12% wider than the first version of the I-Cab
- Significantly increased brightness thanks to the large glass surfaces, which allow maximum visibility upwards and downwards
- Equipped with Autolift (option)
- Enhanced air conditioning

> Ergonomics



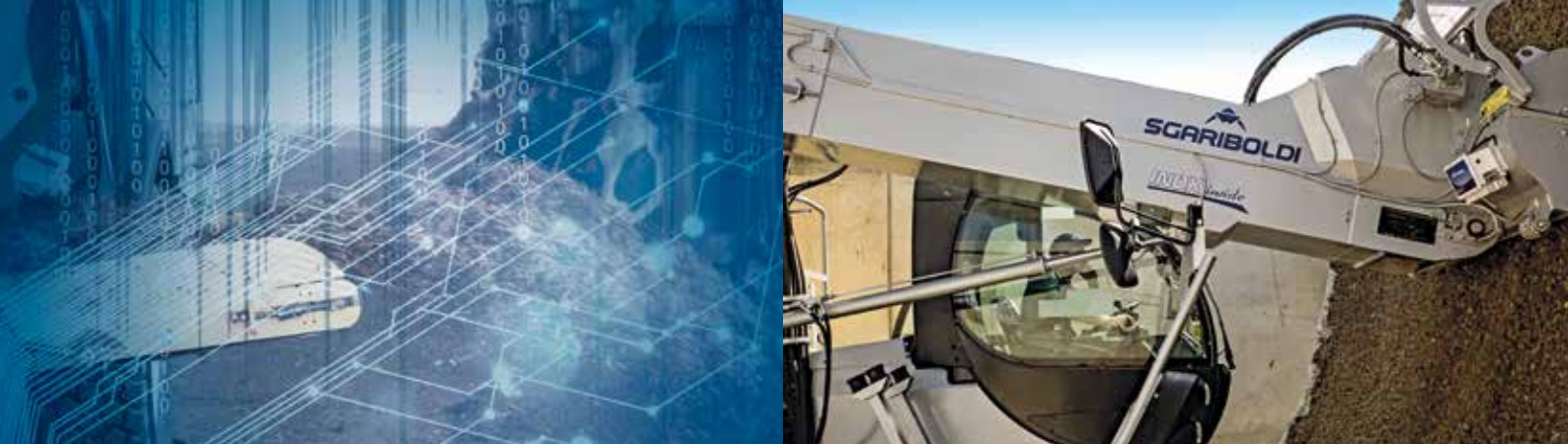
- Seat, armrest and display are now one unit, creating a complete control station
- Small interactive joystick which adjusts automatically according to the active functions

> Display



- 10-inch display designed to bring together all the machine's functions
- Fully integrated information for immediate consultation

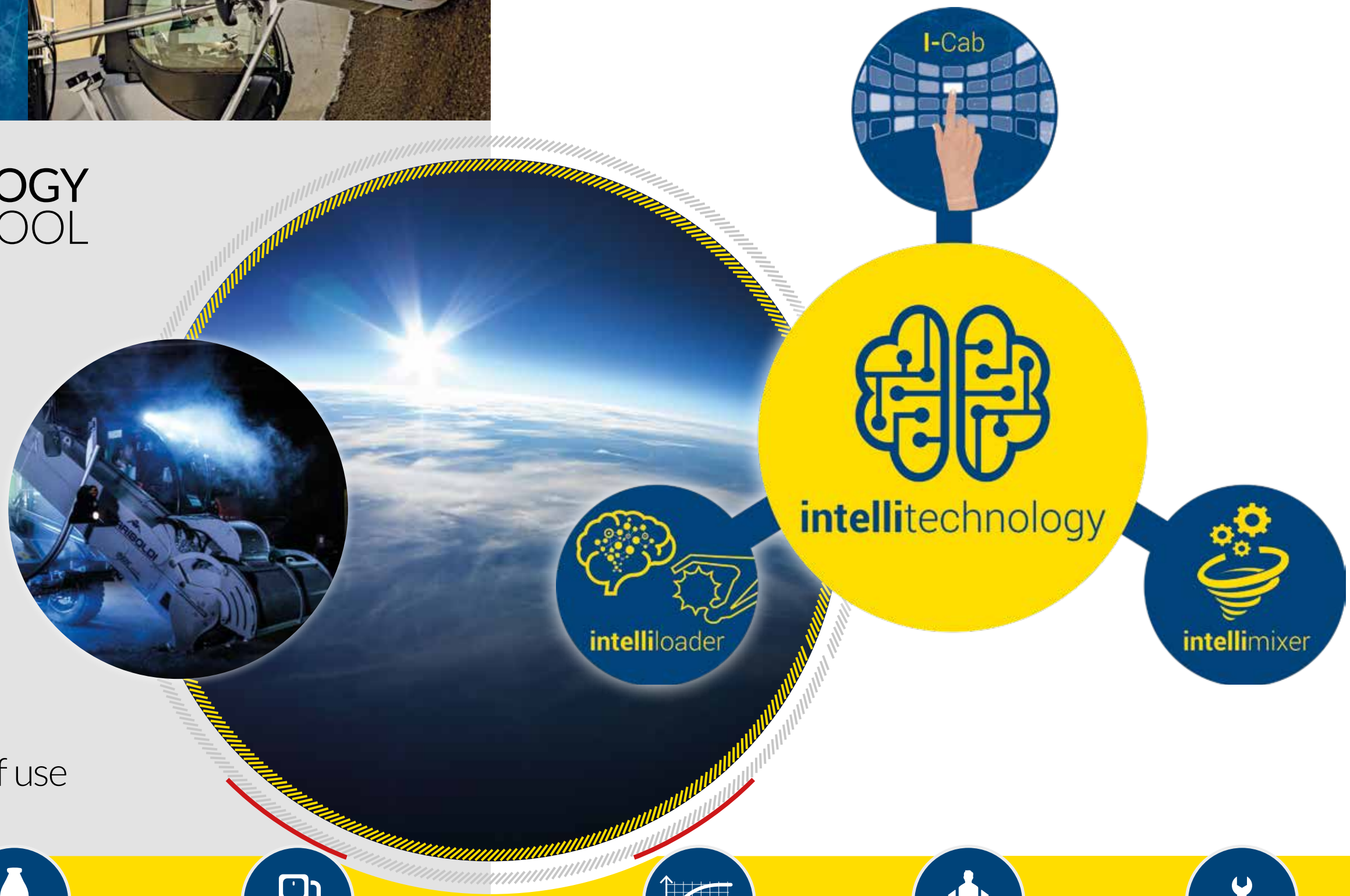




INTELLITECHNOLOGY THE DEFINITIVE TOOL FOR REACHING NEW GOALS

An innovative system that helps regulate the machine's performance, thus exploiting the diet feeder's full potential to obtain the best results, in less time, with less consumption, and regardless of the operator's experience level.

Exceptional results
achieved with extreme
simplicity and comfort of use



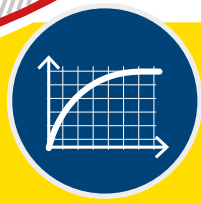
Reduction of daily working times



Rapid increase in production



Significant reduction in consumption



Optimal exploitation of the diesel engine's performance



High performance, regardless of the operator's experience level



Money saving of the maintenance costs



LOADING SYSTEM

An original Sgariboldi system which ensures excellent performance, even with the most difficult products.

- Loading drums with available power ratings up to 210 HP
- Clean, precise and continuous cutting that won't damage the fibre or the structure of the silage

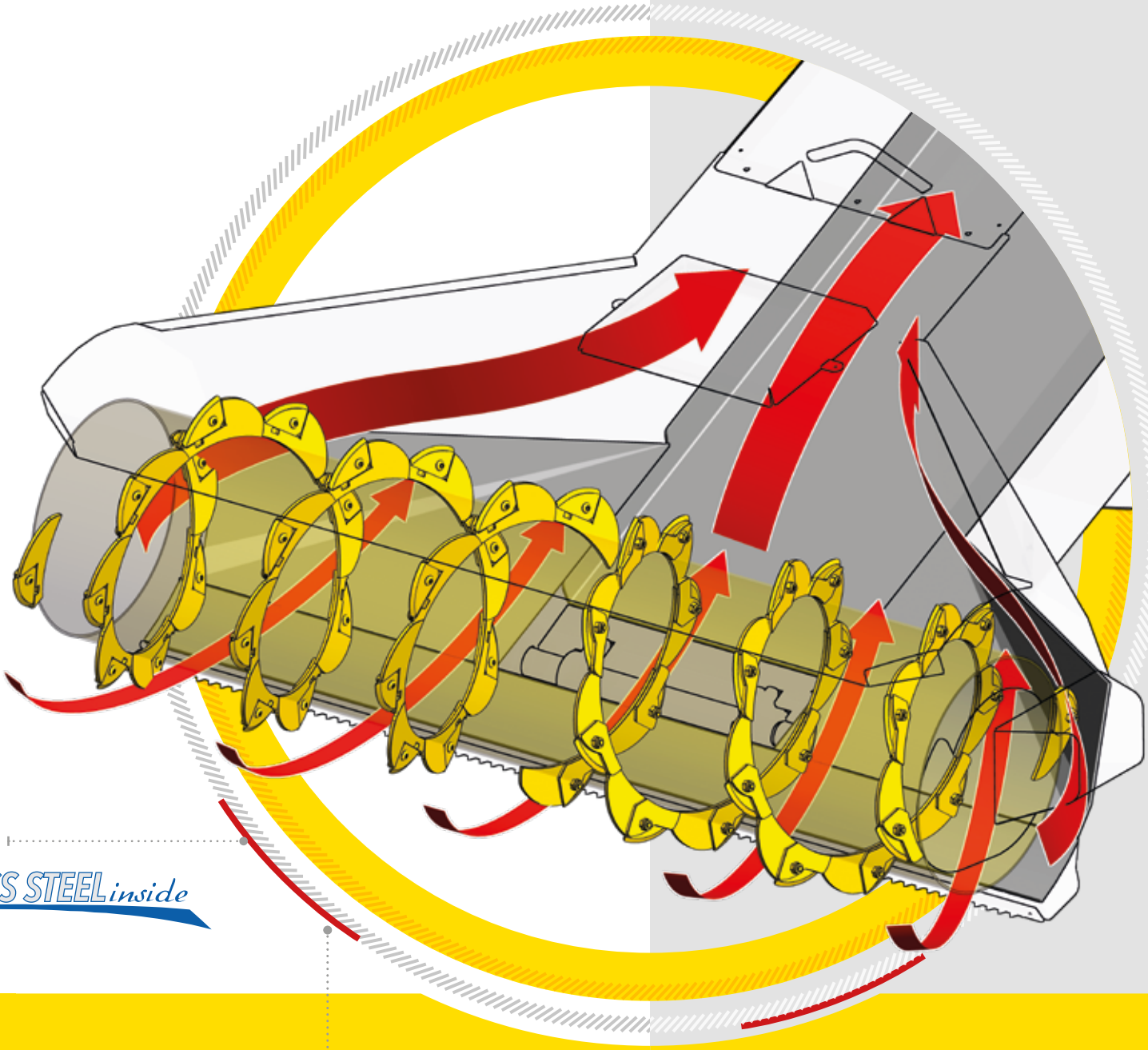
Personalised Cutting system

Six types of blades to meet any specific cutting requirements.

STAINLESS STEEL *inside*

Super loading drum

Ideal for cutting round bales of any size and compactness. Perfect for those who demand cutting speed and loading operations that fully respect the characteristics of each individual ingredient.



Product structure **totally preserved**

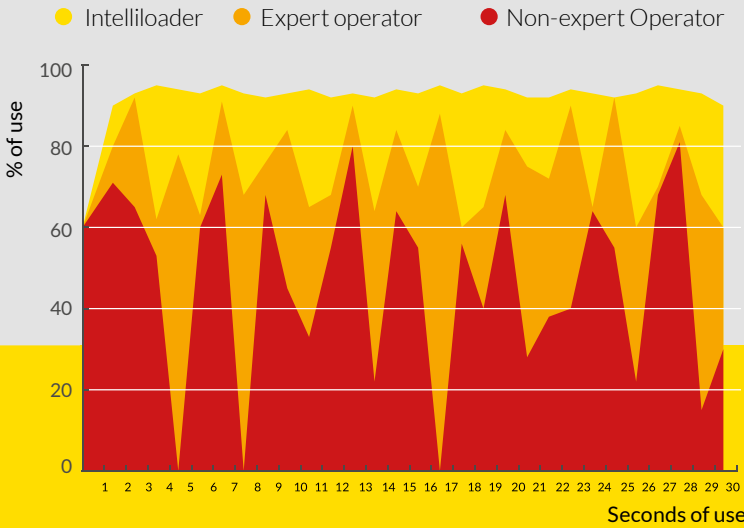
* Only with I-Cab II

Intelliloader: excellent results with no worries

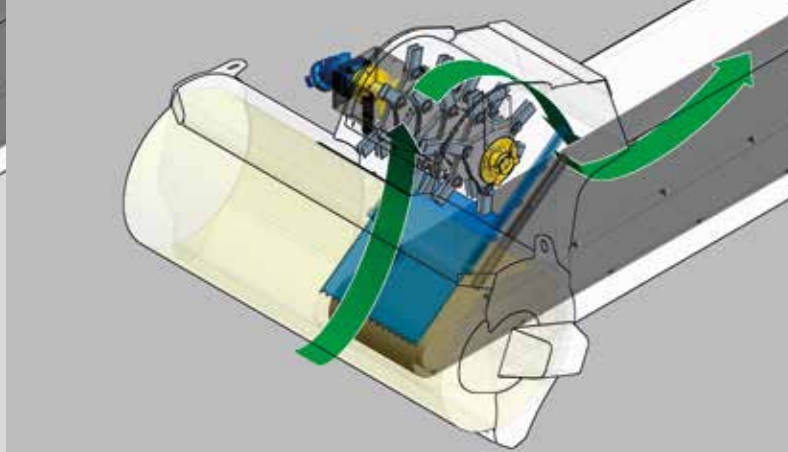
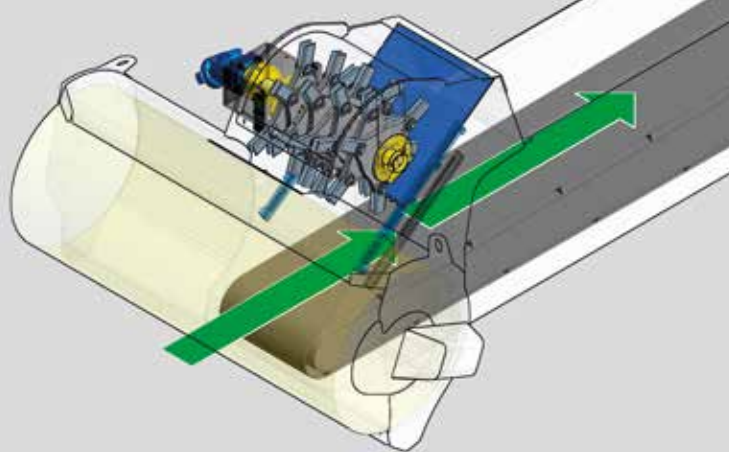
Set the default cutting program and make yourself comfortable: Intelliloader function will ensure excellent mixing results.

Sgariboldi created and improved the Intelliloader technology that allows the operator to work safely without worrying about the types of products loaded.

Compared to the manual function, the system allows higher and stable in time performances



Intelliloader vs. operator



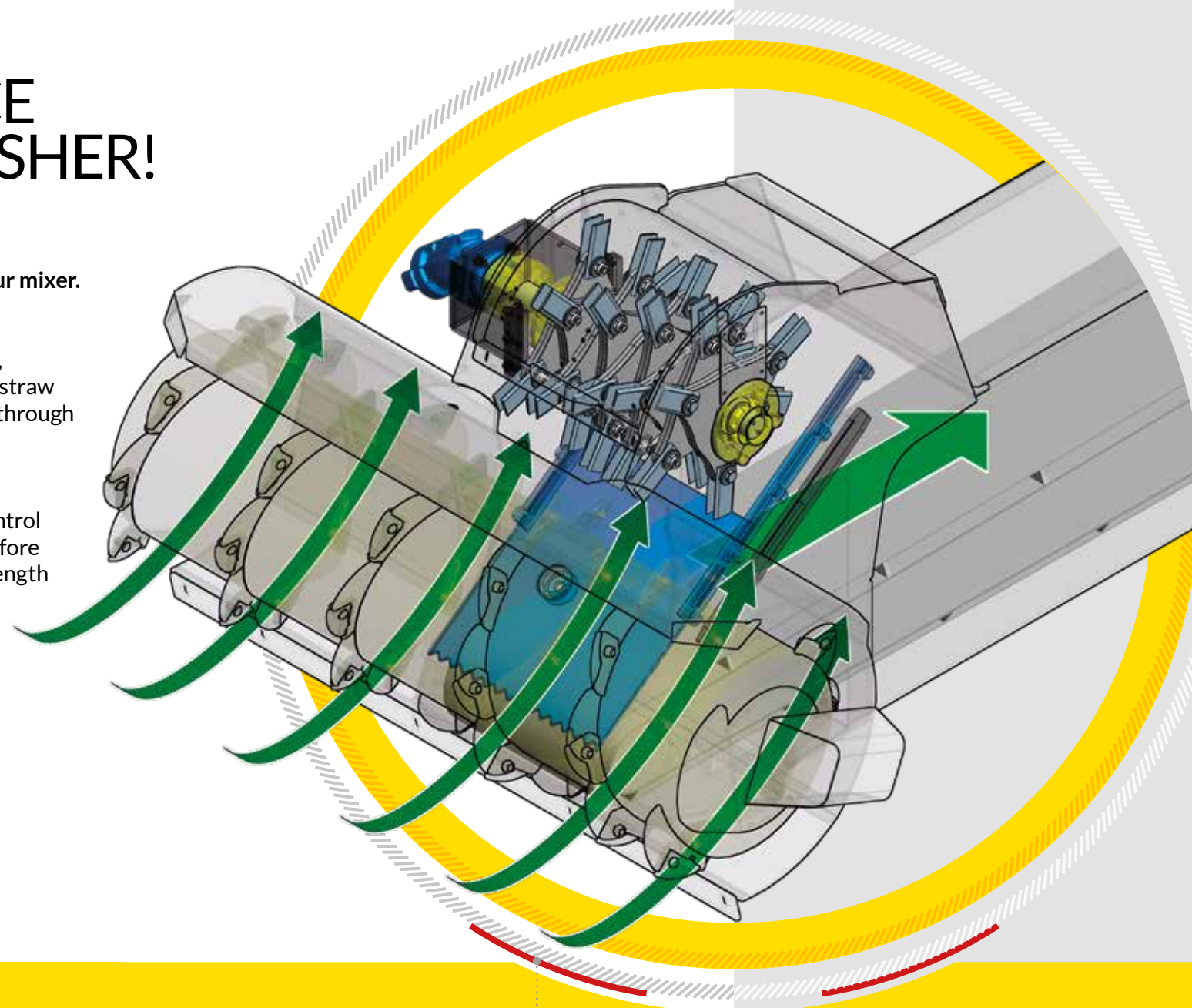
Slasher **engaged**
and **disengaged**
by necessity of cut



BETTER PERFORMANCE WITH THE SLASHER!

The cutting of long fiber products is fast and precise with the use of slasher, fully integrated into the loading system of your mixer.

This technology, developed to better act on the structure of each single ingredient, will allow you to definitively abandon the straw chopper and accelerate work operations through a single tool capable of cutting products with great speed and accuracy. It can be interested or disconnected as needed, allowing the operator total control over the cutting of individual products before the mixing phase, being able to vary the length according to specific needs.



The operator can select either to vary the cut length or not to cut at all, thereby having complete control over the ration.



STAINLESS STEEL *inside*

Optimises and completes
the function
of the loading drum

Maximum cutting
precision





MONOFEE[®]

HORIZONTAL TECHNOLOGY

An advanced cutting-mixing system with a single large horizontal auger that guarantees maximum operational reliability and machine sizes among the most compact on the market.



Optional stainless steel covers
STAINLESS STEEL inside



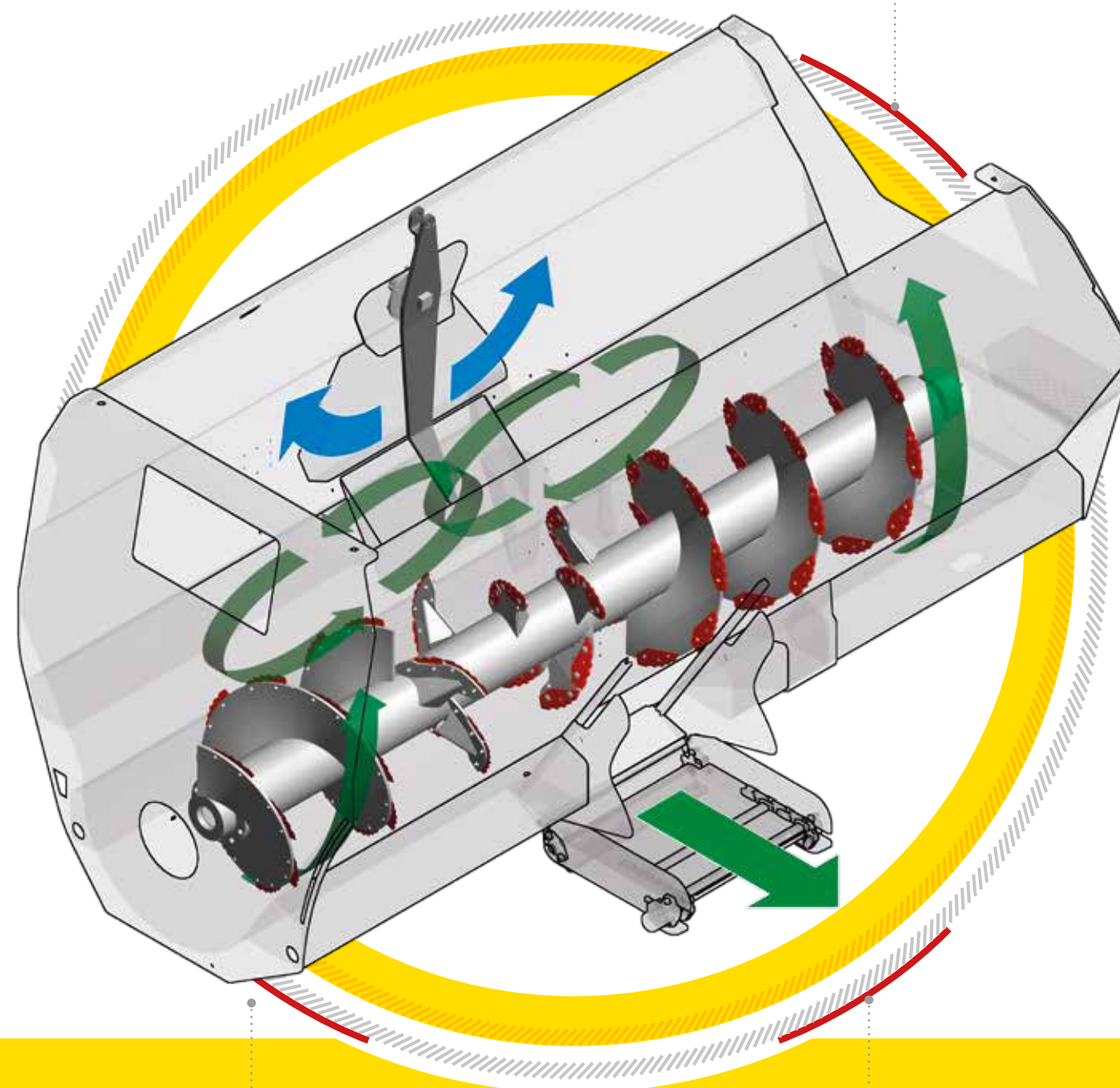
MONOFEEDER[®] HORIZONTAL TECHNOLOGY

Twin Flow: an original patented system

A double flow to speed-up work.

The auger, with its counterposed spirals, forces a dynamic twin flow upon the materials, from the front and rear part of the machine towards the centre of the mixing tank.

- The SG version (optional), the best for mixing without cutting, is able to perfectly homogenise the pre-cut products



Rapid mixing, quality mixture

Once the last ingredient has been loaded, the mix can be instantly distributed to the animals. The resulting feed is a soft, uniform mixture, cut to perfection.

- Excellent "Foraging Value" (compared to the siloed products' structure)
- No overheating of the final product. In each phase of the mixing, the product is never pushed or pressed against the walls
- Maximum desirability and rumination. The fresh product, with its respected fibres, increases the bovine's appetite and the speed in which the feed moves towards the rumen



The advantages of the deflector

- Reduces mixing time
- Allows effective material flow, called "Twin Flow"

Bolted counter knives with an especially designed arrangement according to the various types of ingredients.

Perfect mix even with a **30% full tank**

One auger, one gearbox, one hydraulic engine. The advantages:

- Less wear and tear
- Less consumption
- Less maintenance costs
- Less environmental impact



MAV® 6200

Powered by STAGE V engines



MAV® 6200

		MAV 6211	MAV 6214	MAV 6217
Capacity	m ³	11	14	17
Wheel drive		Front	Front	Front
Length	mm	9000	10000	10500
Max. width	mm	2180	2180	2180
Height	mm	2600	2700	2750
Loading drum width	mm	1900 x 600	1900 x 600	1900 x 600
Loading height	mm	4750	4750	4750
Front and rear wheels		285/70-19,5	315/60-22.5	315/60-22.5
Front exterior track	mm	2060	2100	2100
Rear exterior track	mm	2050	2180	2280
Left side discharge by chain elevator	mm	670 x 800	820 x 800	820 x 800
4-cylinder VOLVO diesel engine	kW / HP	129 / 175	129 / 175	129 / 175
Drive speed	Km/h	0 - 20	0 - 20	0 - 20
Weight	Kg	9000	9500	10000



PERFECT COMBINATION

- Available from 11 to 17 m³
- Diesel engine located between the cab and the mixing tank
- Diesel engine available up to 218 HP
- Front wheel drive
- Speed up to 40 Km/h
- Available also in a version without the conveyor arm



COMBI® 7200

Powered by STAGE V engines



COMBI® 7200

		COMBI 7220	COMBI 7223
Capacity	m³	20	23
Wheel drive		Front	Front
Length	mm	10000	10800
Max. width	mm	2550	2550
Height	mm	3050	3100
Loading drum width	mm	1900x600	1900x600
Loading height	mm	5300	5300
Front and rear wheels		385/55 R22.5	385/55 R22.5
Left side discharge by chain elevator	mm	1020 x 1000	1020 x 1000
4-cylinder VOLVO Diesel engine	kW / HP	160 / 218	160 / 218
Drive speed	Km/h	0 – 30	0 – 30
Weight	Kg	12300	13500



COMPACT AND POWERFUL

- Available from 20 to 23 m³
- Diesel engine located between the cab and the mixing tank
- Diesel engine available up to 238 HP
- Steering angle of 40 °
- Speed up to 40 Km/h
- Available also in a version without the conveyor arm



GULLIVER
TECHNOLOGY

GULLIVER®

PADDLE TECHNOLOGY

Two independent steps for an outstanding mixing quality. Gulliver is designed to treat each raw material according to its structure, in order to homogenize it in the best way during the mixing operations.



CUTS FIRST, THEN MIXES



Complete emptying
of the mixing tank
during discharge



PADDLE MIXING SYSTEM

Everything on the Gulliver model is designed to ensure **excellent mixing**; all the products flow uniformly into the tank and are gently processed preserving their structures.

Cuts first, then mixes

Intelligent loading and unparalleled mixing. The separation of the cutting and mixing phases with this system ensures:

- Greater precision
- Greater delicacy
- Reduced times
- Decreased consumption



Perfect mixture: quick and uniform

Each TMR ingredient is processed taking into account its specific characteristics, thus optimising the mixing times. Distribution can begin as soon as the loading process has been completed.

- Complete respect for the structure of the ingredients
- Homogeneous, fresh and very soft mix
- Extremely reduced mixing times and minimum energy consumption

Different flows: optimization of loading and mixing action

The tank is loaded uniformly, thanks to the patented electronic system, while the paddles gently mix the loaded ingredients.

Optional **stainless steel partial**
lining of the tank

STAINLESS STEEL *inside*



GULLIVER® 6000

Powered by STAGE V engines



GULLIVER® 6000

		GULLIVER 6011	GULLIVER 6014	GULLIVER 6018
Capacity	m ³	11	14	18
Wheel drive		Front	Front	Front
Length	mm	9000	10000	10500
Max. width	mm	2180	2180	2450
Height	mm	2600	2700	2900
Loading drum width	mm	1900 x 600	1900 x 600	1900 x 600
Loading height	mm	4750	4750	4750
Front and rear wheels		285/70-19,5	315/60-22.5	315/60-22.5
Front exterior track	mm	2060	2100	2100
Rear exterior track 4WS	mm	2050	2280	2450
Low discharge door, vertical slide and chain discharge elevator	mm	670 x 800	820 x 800	820 x 800
4-cylinder VOLVO diesel engine	kW / HP	129 / 175	129 / 175	129 / 175
Drive speed	Km/h	0 - 20	0 - 20	0 - 20
Weight	Kg	9000	9500	10000

GULLIVER
TECHNOLOGY



CUTS FIRST, THEN MIXES

THE PERFECT COMBINATION

- Available from 11 to 18 m³
- Diesel engine located between the cab and the mixing tank
- Diesel engine available up to 218 HP
- Front wheel drive
- Speed up to 40 Km/h



GULLIVER® 7000

Powered by STAGE V engines



GULLIVER® 7000

		GULLIVER 7021	GULLIVER 7025
Capacity	m³	21	25
Wheel drive axle		Front	Front
Length	mm	10800	10000
Max. width	mm	2500	2700
Height	mm	2850	3550
Loading drum width	mm	1900x600	1900x600
Loading height	mm	5300	5300
Front and rear wheels		385/55 R22.5	445/50 R22.5
Low discharge door, vertical slide and chain discharge elevator	mm	820 x 800	1220 x 800
4-cylinder VOLVO Diesel engine	kW / HP	160 / 218	160 / 218
Drive speed	Km/h	0 - 30	0 - 30
Weight	Kg	13000	14000



CUTS FIRST, THEN MIXES

COMPACT AND POWERFUL

- Available from 18 to 25 m³
- Diesel engine located between the cab and the mixing tank
- Diesel engine available up to 238 HP
- Steering angle of 40 °
- Speed up to 40 Km/h



GULLIVER® 8000 S

Powered by JOHN DEERE STAGE V engines



GULLIVER® 8000 S

		GULLIVER 8021	GULLIVER 8028	GULLIVER 8031
Capacity	m³	21	28	31
Wheel drive		Front	Front	Front
Length	mm	11000	11000	11500
Max. width	mm	2550	2700	2700
Height	mm	3000	3500	3500
Loading drum width	mm	1900 x 600	1900 x 600	1900 x 600
Loading height	mm	5000	5000	5000
Front wheels		385/55-22.5	445/65-22.5	445/65-22.5
Rear wheels		385/55-22.5	445/65-22.5	445/65-22.5
Front track	mm	2200	2600	2600
Rear track	mm	2550	2670	2670
Low discharge door and chain discharge elevator		820 x 800	1220 x 800	1220 x 800
6-cylinder J.D. Diesel engine	kW / HP	187 / 255	187 / 255	187 / 255
Drive speed	Km/h	0 - 30	0 - 30	0 - 30
Weight	Kg	13000	17000	18000



CUTS FIRST, THEN MIXES

POWER AND CONTROL

- Available from 21 to 31 m³
- Diesel engine located in the back
- Available with 2WD/4WS and 4WD/4WS (*option*)
- J.D. engine with 255 - 300 hp - Powertech 6.8 L
- Rear wheel drive
- Speed up to 40 Km/h
- Available also in a version without the conveyor arm



VS.2[®]

VERTICAL TECHNOLOGY

Over the years Sgariboldi has reached the highest level in the vertical mixing, enhanced by versatile, functional and reliable machines to suit every farmer need.





Optional **STAINLESS STEEL** covers

STAINLESS STEEL inside



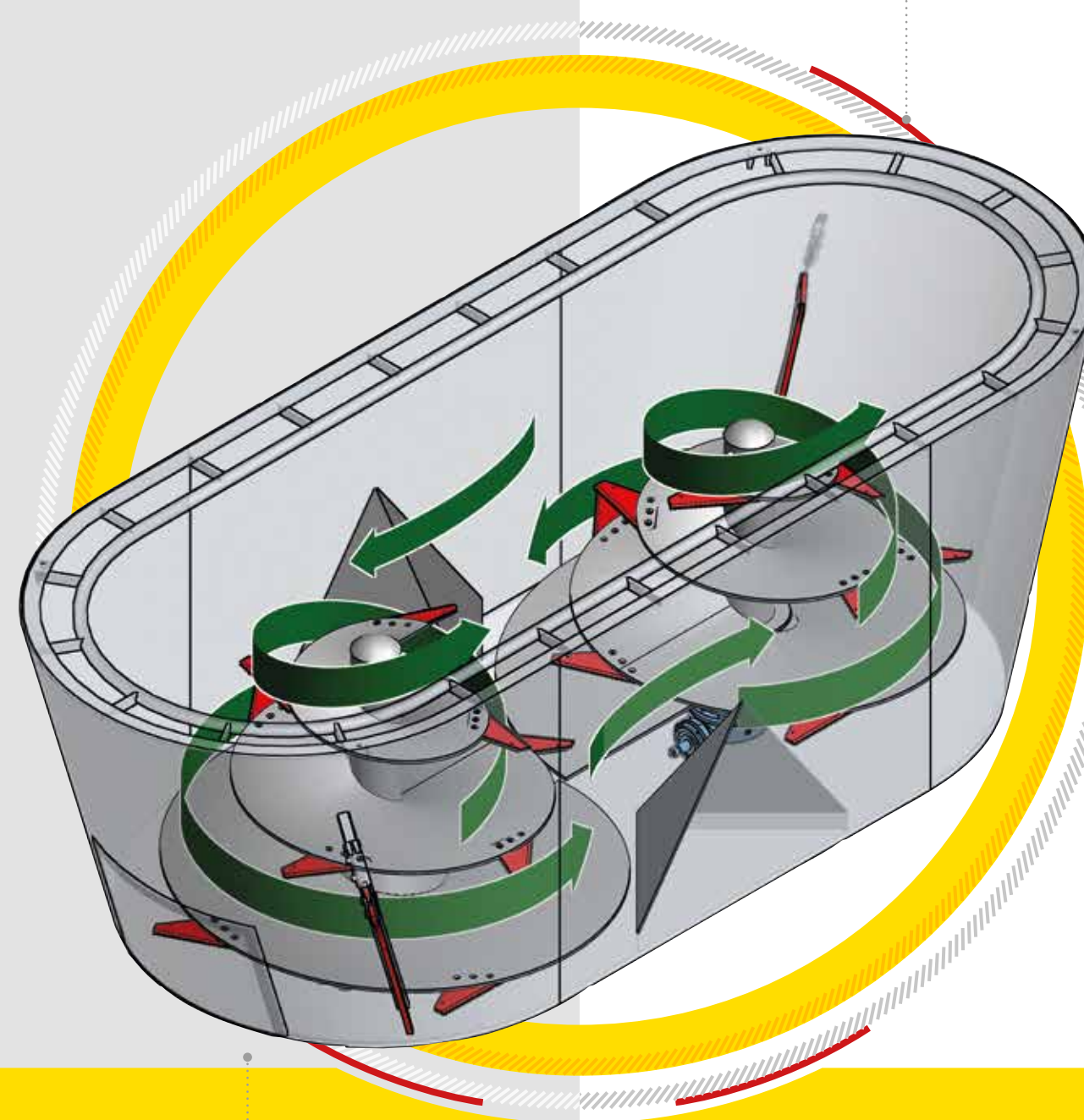
VS2 VERTICAL TECHNOLOGY

Sgariboldi develops vertical diet feeders with exceptional mixing performance and maintenance features, ideal for cut hay or straw bales of any size, shape, and weight, and that are suitable for any work requirements.

Mixing tank: strength and functionality

The mixing tank shape handles the ingredients flows to get quickly the best mixture, preserving the structure of any commodity.

Auger and knives designed for the best chopping action



Conic auger along with special knives, allows:

- The cut of long fibre products
- The swift flaking off of all bales
- Reduced working times by avoiding overheating in the mix
- The retention of an excellent fodder value and excellent ration softness.

Counter-knives in the mixing tank: **they ensure clean cut of fibrous products**

Uniform and **precise** ration discharge

RPM

Intellimixer

outstanding mixing speed

Time optimization

Intellimixer technology allows to have the fastest mixed ration. The cutting time optimization avoids overheating or de-mixing risks and the unifeed turns out just perfect. The final goal is to save time and fuel, therefore increasing the productivity.

Infinite variations in speed

Forget about the 2-gears mixer-feeders, either too slow or too fast and the Power Shift transmission with the set speed chosen by the operator and restricted to the numbers of connections. Thanks to its sensors and its smart approach, Intellimixer technology avoids the operator constantly stepping in to adjust the auger turns. This system handles instantly of every situation during the mixing and it settles automatically the auger's speed.



GRIZZLY® 6100

Powered by STAGE V engines



GRIZZLY® 6100



		GRIZZLY 6114 /1	GRIZZLY 6116 /1	GRIZZLY 6114 /2	GRIZZLY 6116 /2	GRIZZLY 6118 /2
Capacity	m³	14	16	14	16	18
Number of augers		1	1	2	2	2
Wheel drive		Front	Front	Front	Front	Front
Length	mm	8800	9000	10300	10500	10500
Width	mm	2500	2500	2200	2200	2200
Height at the mixing tank	mm	3200	3400	2650	2850	3050
Max height during driving phase (loading drum 400 mm from the ground)	mm	3250	3450	2730	2930	3130
Width of loading drum x width of elevator	mm	1900 x 600	1900 x 600	1900x600	1900x600	1900x600
Loading drum working height	mm	4750	4700	4750	4750	4750
Front exterior track	mm	2100	2100	2100	2100	2100
Front wheels		315/60-22.5	315/60-22.5	315/60-22.5	315/60-22.5	315/60-22.5
Rear exterior track	mm	2200	2200	2200	2200	2200
Rear wheels		315/60-22.5	315/60-22.5	315/60-22.5	315/60-22.5	315/60-22.5
Number of rear wheels		2	2	2	2	2
Drive speed	Km/h	0 - 20	0 - 20	0 - 20	0 - 20	0 - 20
4-cylinder VOLVO Diesel engine	kW / HP	129 / 175	129 / 175	129 / 175	129 / 175	129 / 175
Weight	kg	9500	10000	10000	10500	11000



PERFECT COMBINATION

- Available from 14 to 18 m³
- Diesel engine located between the cab and the mixing tank
- Diesel engine available up to 218 HP
- Front wheel drive
- Speed up to 40 Km/h
- Available also in a version without the conveyor arm



GRIZZLY® 7100

Powered by STAGE V engines



GRIZZLY® 7100



		GRIZZLY 7118 / 1	GRIZZLY 7120 / 1	GRIZZLY 7122 / 1	GRIZZLY 7120 / 2	GRIZZLY 7122 / 2	GRIZZLY 7125 / 2
Capacity	m³	18	20	22	20	22	25
Number of augers		1	1	1	2	2	2
Wheel drive		Front	Front	Front	Front	Front	Front
Length	mm	8300	8200	8100	10200	10400	10250
Max. width	mm	2800	2800	2800	2500	2500	2550
Height at the mixing tank	mm	3220	3420	3620	2880	3080	3080
Max height during driving phase (loading drum 400 mm from the ground)	mm	3450	3650	3750	3150	3330	3330
Loading drum width	mm	1900x600	1900 x 600	1900 x 600	1900x600	1900x600	1900x600
Loading height	mm	5500	5500	5500	5500	5500	5500
Front wheels		385/55-22,5	385/55-22,5	385/55-22,5	385/55-22,5	385/55-22,5	385/55-22,5
Rear wheels		385/55-22,5	385/55-22,5	385/55-22,5	385/55-22,5	385/55-22,5	445/50 R.22.5
4-cylinder VOLVO Diesel engine	kW / HP	160 / 217	160 / 217	160 / 217	160 / 217	160 / 217	160 / 217
Drive speed	Km/h	0 - 30	0 - 30	0 - 30	0 - 30	0 - 30	0 - 30
Weight	Kg	13000	13400	13800	13500	13900	14400



COMPACT AND POWERFUL

- Available from 18 to 25 m³
- Diesel engine located between the cab and the mixing tank
- Diesel engine available up to 238 HP
- Steering angle of 40°
- Speed up to 40 Km/h
- Available also in a version without the conveyor arm



GRIZZLY® 8100 S

Powered by JOHN DEERE STAGE V engines



GRIZZLY® 8100 / 2 S

		GRIZZLY 8125 / 2	GRIZZLY 8128 / 2	GRIZZLY 8130 / 2
Capacity	m³	25	28	30
Number of augers		2	2	2
Wheel drive		Rear	Rear	Rear
Length	mm	10500	10800	11000
Max. width	mm	2550	2550	2550
Height at the mixing tank	mm	3000	3150	3450
Max height during driving phase (loading drum 400 mm from the ground)	mm	3300	3300	3550
Loading drum width	mm	1900 x 600	1900 x 600	1900 x 600
Loading height	mm	5800	5800	5800
Front wheel track	mm	2300	2300	2300
Front wheels		385/55-22.5	385/55-22.5	385/55-22.5
Rear wheel track	mm	2500	2500	2400
Rear wheels		295/60-22.5	295/60-22.5	445/65-22.5
Number of rear wheels		4	4	2
6-Cylinder J.D. Diesel Engine	kW / HP	187 / 255	187 / 255	187 / 255
Drive speed	Kg	0 - 30	0 - 30	0 - 30
Weight	Kg	13000	14000	15000



POWER AND CONTROL

- Available from 25 to 30 m³
- Diesel engine located in the back
- Available with 3 axles with 4WD/6Ws (*options*)
- J.D. engine with 255 - 300 hp - Powertech 6.8 L
- Rear wheel drive
- Speed up to 40 Km/h
- Available also in a version without the conveyor arm

TITANIUM: THE REVOLUTION IN VERTICAL SELF-PROPELLED MIXER

Titanium is a new generation of vertical self-propelled mixers of **big volume**, designed for all farmers who need to manage mixes with a **high specific weight**, with a machine that also offers **outstanding loading performance** and **great manoeuvrability**.

A series of ultra-light machines because they are built with **special alloys** that allow enormous loads to be handled with only **two axles**, and combine the typical efficiency and durability of Sgariboldi mixers with a high degree of manoeuvrability.

Also designed to optimise loading times, it features the largest loading drum on the market: **2,200 mm width** and **210 hp power**. Combined with a **loading arm 35% wider**, this makes the series unique in its kind.

Ultralight,
built with special steels and 2 axles



Series features

- Ideal for companies with a **high number of animals** and **high productivity**
- **Stronger and lighter** thanks to advanced alloy technology, which eliminates the need for an extra axle. Using just two axles reduces stress on the frame and drive components while turning.
- **Excellent maneuverability** through the use of 2WD/4WS and 4WD/4WS (option)
- **Unprecedented load capacity** – from 13.300 to 17.000 kg
- **Super-resistant frame** to ensure very high levels of reliability and robustness
- **Fuel consumption reduced by 5%** due to the reduced overall weight, improved hydraulics and reduced friction
- **400 Lt diesel tank** allows you to work a whole day without ever stopping



The largest loading drum
on the market:
2.200 mm and 210 hp

Extraordinary loading
capacity
from 13.300 to 17.000 kg





GRIZZLY® 8100 TITANIUM S

Powered by JOHN DEERE STAGE V engines



GRIZZLY® 8100 S TITANIUM

		TITANIUM 8130 / 2	TITANIUM 8132 / 2	TITANIUM 8136 / 2	TITANIUM 8140 / 2
Capacity	m³	30	32	36	40
Number of augers		2	2	2	2
Wheel drive		Rear	Rear	Rear	Rear
Length	mm	11000	11200	11900	12100
Max. width	mm	2550	2550	2880	2880
Height	mm	3700	3850	3600	3850
Max height during driving phase (loading drum 400 mm from the ground)	mm	3830	3980	3730	3980
Loading drum width	mm	1900 x 600	1900 x 600	2200 x 800	2200 x 800
Loading height	mm	6000	6000	6500	6500
Front wheel track	mm	2300	2300	2400	2400
Front wheels	mm	385/55-22.5	385/55-22.5	445/65-22,5	445/65-22,5
Rear wheels track		2400	2400	2680	2840
Rear wheels	mm	445/65-22.5	445/65-22.5	445/65-22,5	600/50-22,5
Number of rear wheels		2	2	2	2
Number of rear axles		1	1	1	1
Diesel engine J.D. 6 cil.	kW / HP	187 / 255	187 / 255	220 / 300	220 / 300
Drive speed	Km/h	0 - 30	0 - 30	0 - 30	0 - 30
Weight	Kg	14100	14600	16000	16600
Payload	Kg	15140	16100	16880	18870



POWER AND CONTROL

- Available from 30 to 40 m³
- Diesel engine located in the back
- Available with 2WD/4WS and 4WD/4WS (option)
- J.D. engine with 255 - 300 hp - Powertech 6.8 L
- Speed up to 40 Km/h



GRIZZLY® 8100 S TITANIUM - XL

Powered by JOHN DEERE STAGE V engines



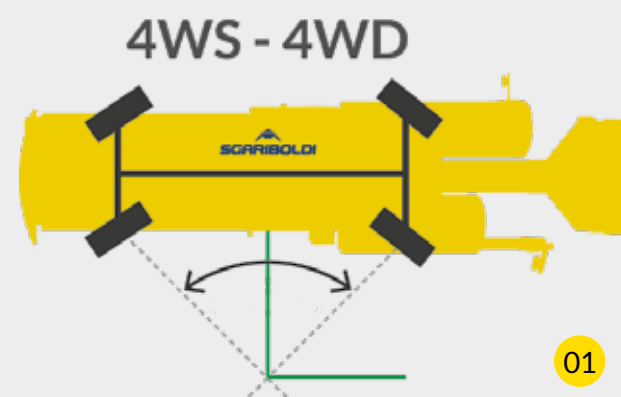
GRIZZLY® 8100 S TITANIUM - XL

		TITANIUM XL 8140 / 3	TITANIUM XL 8142 / 3	TITANIUM XL 8145 / 3
Capacity	m³	40	42	45
Number of augers		3	3	3
Wheel drive		Rear	Rear	Rear
Length	mm	14000	14000	14000
Max. width	mm	2550	2550	2550
Height	mm	3500	3600	3750
Max height during driving phase (loading drum 400 mm from the ground)	mm	3650	3750	3900
Loading drum width	mm	2200 x 800	2200 x 800	2200 x 800
Loading height	mm	6000	6000	6000
Front wheel track	mm	2400	2400	2400
Front wheels	mm	445/65-22.5	445/65-22.5	445/65-22.5
Rear wheels track		2400	2400	2400
Rear wheels	mm	445/65-22.5	445/65-22.5	445/65-22.5
Number of rear wheels		4	4	4
Number of rear axles		2	2	2
Diesel engine J.D. 6 cil.	kW / HP	220 / 300	220 / 300	220 / 300
Drive speed	Km/h	0 - 30	0 - 30	0 - 30
Weight	Kg	23000	24000	25500
Payload	Kg	18000	18900	20250



POWER AND CONTROL

- Available from 40 to 45 m³
- Diesel engine located in the back
- 3 axles with 4WD/6WS
- J.D. engine with 300 hp - Powertech 6.8 L
- Speed up to 40 Km/h



01



02



03



04

01 4WS and 4WD version*

02 Road homologation

03 Telematics

04 Straw blower

GENERAL ACCESSORIES



05

Complete mixing tank cover



06

Centralized greasing system



07

Different type of magnet

08

Conveyor arm suspension

09

Air conditioning

10

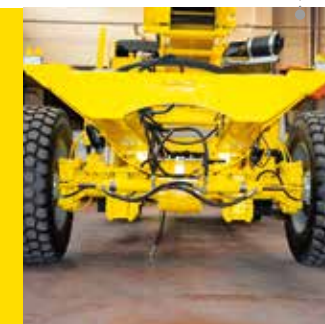
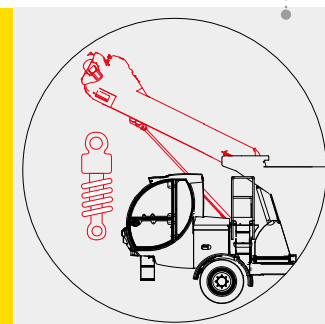
Axle with hydraulic suspensions

11

Autolift

12

Different types of hopper





KOALA® MD/S



KOALA® MD/S



		ONE AUGER	TWO AUGERS
		KOALA 2,5 MD / S	KOALA 4,5 MD / S
Capacity	m³	2,5	4,5
Number of augers		1	2
Length	mm	3400	5500
Width	mm	1550	1550
Height	mm	1850	1850
Yanmar diesel engine	kW / HP	18 / 24 – 3 cylinders	35 / 48 – 4 cylinders
Driving speeds	km/h	0 - 6	0 - 6
Weight	Kg	1300	1900

EXCELLENT PERFORMANCE, MINIMAL SIZE

- Available from 2,5 to 4,5 m³
- Direct lateral discharge
- Hydraulic door
- Maximum maneuverability



COMPETENCE AT **CUSTOMER'S** SERVICE

A constant commitment to providing reliable machines and high-quality service.



TESTING

Each machine is tested flushing the hydraulic system.



SPARE PARTS

A large warehouse provides original spare parts that meet the highest customers needs.



AFTER SALE SUPPORT

Sgariboldi guarantees after-sale support with its qualified and multi-language staff.



TRAINED TECHNICAL PERSONNEL

Internal and external technical staff is constantly trained by the headquarter, in order to guarantee prompt and effective technical support service.



WORLDWIDE PRESENCE

Sgariboldi's solutions can be found in every country worldwide, where the farmers' needs and the quality of the products are often different, or even unique. The experience and specific skills that Sgariboldi has gained over the years have led it to invest more heavily in the global market. While our work constantly leads us into new areas, the company's values, which are rooted in the continuous pursuit of excellence, have always remained the same.



+39 0377 430 405

sgariboldi.it

info@sgariboldi.it

Sgariboldi

SgariboldiOfficial

marketing@sgariboldi.it

sgariboldi.official

SGARIBOLDI Srl

