

# STORTH

EXPERTS IN SLURRY MANAGEMENT



Storth has used its experience of slurry management and extensive market research to develop a range of slurry tankers. Aimed at the modern day farmer and contractor, the objective is to provide a complete slurry solution from farm to field.

## Slurry Tankers

Specialist Manufacturers of slurry handling equipment



STORTH  
Stoneleigh Park, Station Road,  
Holme, Nr Carnforth, Lancashire, LA6 1HR.

Tel: +44 1524 781 900  
Email: [sales@storthmachinery.co.uk](mailto:sales@storthmachinery.co.uk)



Manufactured in the UK

[www.storthmachinery.co.uk](http://www.storthmachinery.co.uk)



# Storth Slurry Tankers

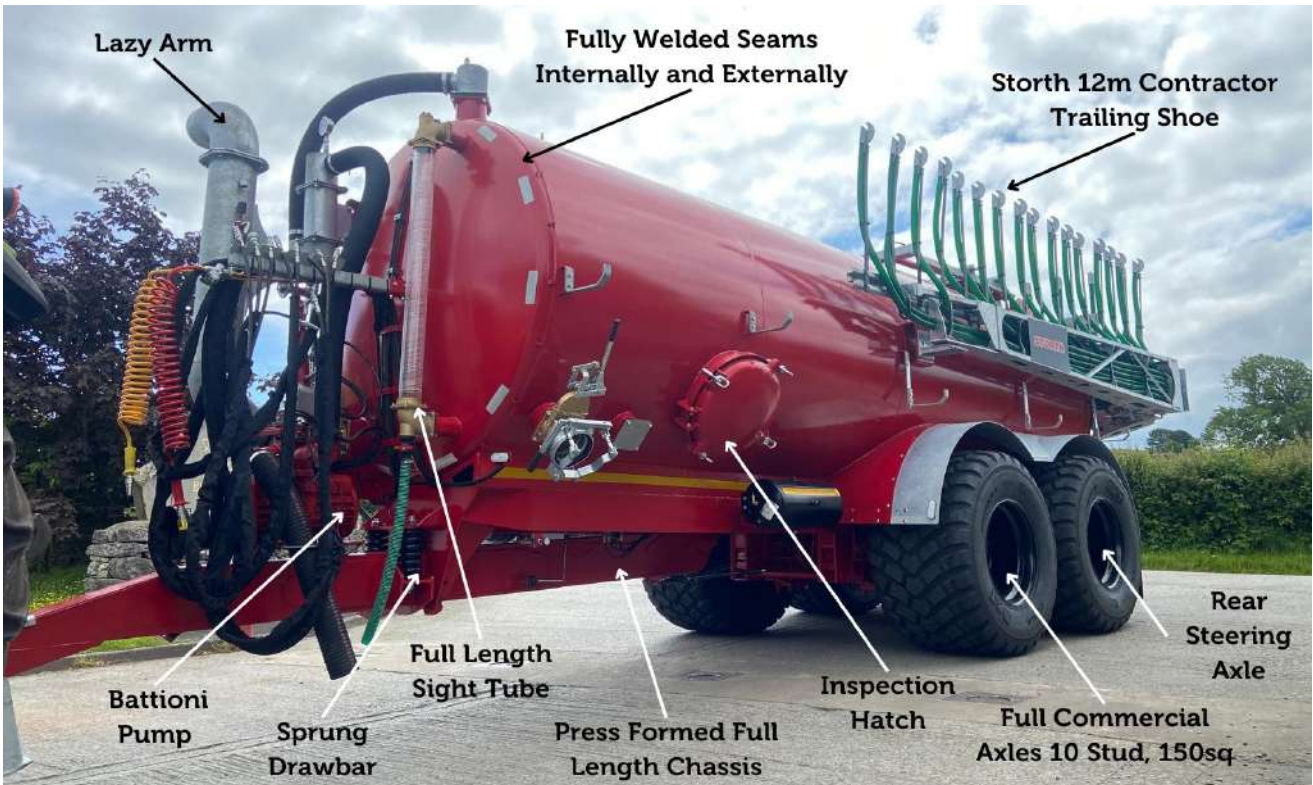
Storth's Premium slurry tankers come in a range of sizes from 2,450gal to 4,100gal on a range of single and tandem steering commercial axles. Designed to incorporate a high level of specification as standard, the tankers slot perfectly into the range of application equipment, complementing the existing dribble bar and trailing shoe products. By establishing tankers, Storth are now the only UK brand to offer a complete range of slurry equipment from farm to field for farmers and contractors in the agricultural sector, reinforcing the "experts in slurry management" mission statement.

Tankers are built on a rock solid foundation with full length applicator ready chassis, sprung drawbar and welded eyelet hitch (swivel on 3000 + models). This sits over a robust 150mm<sup>2</sup> commercial 10 stud 50kph axle(s), exceptional stopping power is provided by S-Cam brakes 420mm OD\*180mm and a stepped axle (exc ST/3000-SA) giving low center of gravity and hill side stability performance. As the finishing touch, the tankers are shod in BKT 800/65 R32 Hi-Load Rated tyres with full width high quality mudguards.

All tankers have recessed barrels manufactured from a 6mm high tensile S355 grade steel, seem welded both internally and externally with double welded implosion rings and a full anti-roll butterfly baffle to prevent any surging of liquid. The renowned and ever reliable Battioni vacuum pump is at the heart of the tanker, over specified at 11,000 ltr/min for a single axle and 13,000 ltr/min on the tandems, this provides quick loading and unloading times, with 4" integral pipework this gives potential to load via two 6" ports simultaneously. Pumps are driven by a professional Walterscheid shaft complete with wide angle and shear bolt, providing full safety protection and efficient field operation. To further enhance operator safety and comfort pumps come with hydraulic change over as standard (manual available on request at no extra cost).

Barrels are "actual" size after manufacture, they benefit from an external vacuum trap with further pump protection provided by 16ltr slurry trap. There are five 6" fill points on the tanker as standard, one on each corner and an additional one on the front left side. Two are fitted with Q/R valves and couplings, three are blanked off with the option of fitting Q/R valves. A full acrylic front sight tube fitted with a flush valve and rear sight bubble, 600mm inspection hatch, 15' 6" suction hose, rear stone trap and splash plate are standard. In addition to a low lever chassis applicator mounting plate, all barrels incorporate both center and upper level brackets guaranteeing secure and solid connection of any application equipment from 7-24m.

The final piece of the jigsaw is full and careful consideration of road safety with full LED lights, rear central high level LED strobe, high visibility safety side strips and rear LED work lights for full visibility to allow for nighttime working.



# Single Axle Tankers

## Premium Features as Standard

- Sprung Drawbar
- Full Length Chassis
- Full Commercial Axle - 10 Stud, 150mm<sup>2</sup> and Stepped (except ST3000)
- Hydraulic Brakes (Air Option)
- Premium BKT 800/65 R32" Tyres
- Full LED Road Lights & Work Lights
- Rear Central High Level Strobe Light
- High Visibility Safety Side Strips
- Wide Angle (WA) PTO Shaft c/w Shear Bolt
- Recessed for Low Centre of Gravity & Stability
- 6mm High Tensile S355 Special Grade Steel Tank
- Seam Weld Rotational & Welded Internally + Externally
- Full Implosion Rings - Double Welded
- Full Anti-Roll Butterfly Baffler
- 6" Pipe Holder
- 5 Fill Points
- 2 off 6" Quick Release Valves and Couplings
- Full Length Front Sight Tube
- Back Sight Bubble
- 600mm Side Inspection Hatch
- Rear Lower Stone Trap
- Rear Splash Plate
- Storth Applicator Ready



## Optional Extras for Single Axle Tankers

- Galvanised
- Auto Fill Lazy Arm 6" or 8"
- Lazy Arm Ready 6" or 8"
- Docking Pod 6"
- Docking Pod 8"
- Over the Hedge Boom
- Air Brakes
- 6" Quick Release Valves and Couplings
- Swivel Hitch
- Garda DODA Combination
- Rain Gun
- Bespoke Paint Work
- Dromone Spoon Hitch
- Front/Rear Emptying System to Allow Spreading Up/Down Slopes
- Oil Can Holder on Side of Drawbar
- Extra 6" Fill Point/without valve and Coupling
- Extra Quick Release Fill Point 6"
- Extra Quick Release Fill Point 8"
- Hydraulic Top-Fill Hatch (Ladder not included)
- Extra Access Ladder on Tank
- Sand Auger Hydraulic Motor

| Model  | Standard BKT Tyres | Battioni Pump | Standard Hitch | Standard 6" Suction Hose |
|--------|--------------------|---------------|----------------|--------------------------|
| ST1750 | 800/65 R 32        | 11,000 litres | Welded         | 15ft                     |
| ST2000 | 800/65 R 32        | 11,000 litres | Welded         | 15ft                     |
| ST2450 | 800/65 R 32        | 11,000 litres | Welded         | 15ft                     |
| ST2750 | 800/65 R 32        | 13,500 litres | Welded         | 15ft                     |
| ST3000 | 800/65 R 32        | 13,500 litres | Swivel         | 15ft                     |

# Tandem Axle Tankers

## Premium Features as Standard

- Sprung Drawbar
- Full Length Chassis
- Full Commercial Axle - 10 Stud, 150mm<sup>2</sup>
- Rear Steering Axle
- Air Over Hydraulic Brakes
- Premium BKT 710/50 R26.5" Tyres
- Full LED Road Lights & Work Lights
- Rear Central High Level Strobe Light
- High Visibility Safety Side Strips
- Wide angle (WA) PTO Shaft c/w Shear Bolt
- 6mm High Tensile S355 Special Grade Steel Tank
- Seam Weld Rotational & Welded Internally + Externally
- Full Implosion Rings - Double Welded
- Full Anti-Roll Butterfly Baffle
- 6" Pipe Holder
- 5 Fill Points
- 2 off 6" Quick Release Valves and Couplings
- Full Length Front Sight Tube
- Back Sight Bubble
- 600mm Side Inspection Hatch
- Rear Lower Stone Trap
- Rear Splash Plate
- Storth Applicator Ready



## Optional Extras for Tandem Axle Tankers

- Galvanised
- Auto Fill Lazy Arm 6" or 8"
- Lazy Arm Ready 6" or 8"
- Docking Pod 6"
- Docking Pod 8"
- Over the Hedge Boom
- Air Brakes
- 6" Quick Release Valves and Couplings
- Garda DODA Combination
- Rain Gun
- Bespoke Paint Work
- Dromone Spoon Hitch
- Front/Rear Emptying System to Allow Spreading Up/Down Slopes
- Oil Can Holder on Side of Drawbar
- Extra 6" Fill Point/without valve and Coupling
- Extra Quick Release Fill Point 6"
- Extra Quick Release Fill Point 8"
- Hydraulic Top-Fill Hatch (Ladder not included)
- Extra Access Ladder on Tank
- Sand Auger Hydraulic Motor

| Model  | Standard BKT Tyres | Battioni Pump | Standard Hitch | Standard 6" Suction Hose |
|--------|--------------------|---------------|----------------|--------------------------|
| ST3000 | 710/50 R26.5       | 13,500 litres | Swivel         | 20ft                     |
| ST3500 | 710/50 R26.5       | 13,500 litres | Swivel         | 20ft                     |
| ST4100 | 710/50 R26.5       | 13,500 litres | Swivel         | 20ft                     |
| ST4500 | 710/50 R26.5       | 13,500 litres | Swivel         | 20ft                     |



## FarmerPlus Dribble Bar (Tanker)

Designed primarily for the slurry tanker market, Storth has incorporated a QuickFit system which can be matched with a tanker chassis mount to give a simple piggy-back set-up. This system allows for height adjustment and quick dribble bar removal.

The dribble bar is operated by one double acting hydraulic service which makes use of a simple in cab control box to switch functions between distributor and boom fold. Features include break back safety wings, wing transport support, anti-burst hydraulic safety valves, LED lights and easy access distributor.

Available in 7.5m, 10m or 12m versions, the FarmerPlus range of Dribble Bars can also be used in umbilical applications when purchased with the optional heavy duty Piggy-Back Frame. This comes with QuickFit system, swing arm and distributor feed pipe.



7.5m FarmerPlus Dribble Bar

| Model            | Outlets | Working Width (m) | Weight (kg) | Hydraulic | Transport Width (m) | Transport Height (m) |
|------------------|---------|-------------------|-------------|-----------|---------------------|----------------------|
| FarmerPlus 7533T | 30      | 7.5               | 450         | 1DA       | 2.45                | 2.85                 |
| FarmerPlus 1043T | 40      | 10                | 710         |           | 2.45                | 2.85                 |
| FarmerPlus 1243T | 40      | 12                | 755         |           | 2.6                 | 2.85                 |

## FarmerPlus Trailing Shoe (Tanker)

The Farmer Trailing Shoe offers simplicity while maintaining its functionality. This trailing shoe benefits from hydraulic floating shoe springs and vertical folding arms for easy transport between slurry store and field. Hydraulic transport locks and arm stabilising pin/cone give complete security when travelling. Designed primarily for the slurry tanker market, Storth have incorporated a QuickFit system which can be matched with tanker chassis mount to give a simple piggy-back set-up. This system allows for height adjustment and quick trailing shoe removal.

### Technical Details

- Robust build quality
- Fully galvanised
- Vertical fold arms
- NovaCutPlus Distributor
- 40mm outlets
- Sprung steel unit carriers
- Cast replaceable shoes
- Rubber placement boots
- Quick hitch tanker mounting system
- Optional flow meter ready



8m FarmerPlus Trailing Shoe

| Model        | Outlets | Working Width (m) | Weight (kg) | Hydraulic | Transport Width (m) | Transport Height (m) |
|--------------|---------|-------------------|-------------|-----------|---------------------|----------------------|
| Farmer 8033T | 30      | 8                 | 940         | 2DA       | 2.45                | 3.2                  |

## Contractor Trailing Shoes (Tanker)

Contractor Trailing Shoes (Tanker) offer wider working width options for larger tankers and higher frequency users. Installed with a vertical OptiCut Profi Plus macerator (2x on ContractorPlus) the design is extremely compact despite the additional working widths. During transport the outer arms are stored alongside the tanker to give best weight distribution as well as security. Rapid fold to unfold times ensure high work rates & each wing has pressure relief break back security for safety. Installation Kits are available for most tanker brands and a fitting service is available.

## Contractor Trailing Shoe (Tanker)



12m Contractor Trailing Shoe

| Model           | Outlets | Working Width (m) | Weight (kg) | Hydraulic | Transport Width (m) | Transport Height (m) |
|-----------------|---------|-------------------|-------------|-----------|---------------------|----------------------|
| Contractor 10.5 | 35      | 10.5              | 850         | 2DA       | 2.98                | 2.49                 |
| Contractor 12   | 40      | 12                | 1000        |           |                     | 2.49                 |

## ContractorPlus Trailing Shoe (Tanker)



15m ContractorPlus Trailing Shoe



| Model             | Outlets | Working Width (m) | Weight (kg) | Hydraulic  | Transport Width (m) | Transport Height (m) |
|-------------------|---------|-------------------|-------------|------------|---------------------|----------------------|
| ContractorPlus 12 | 48      | 12                | 1250        | 2DA        | 2.98                | 2.49                 |
| ContractorPlus 15 | 60      | 15                | 1300        | &          |                     | 2.49                 |
| ContractorPlus 18 | 72      | 18                | 1400        | Case Drain |                     | 2.49                 |



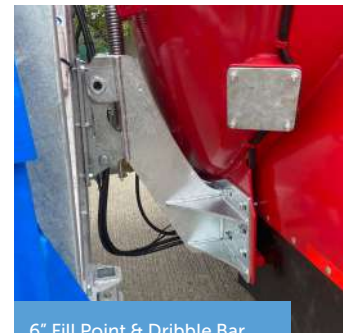
# Tanker Features & Options



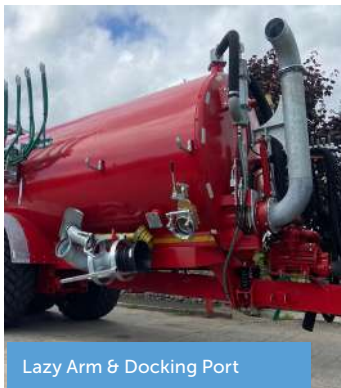
Quick Release Valves, Couplings & 600mm Inspection Hatch



Premium BKT Tyres



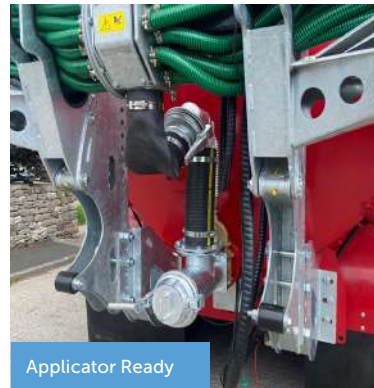
6" Fill Point & Dribble Bar Mounting



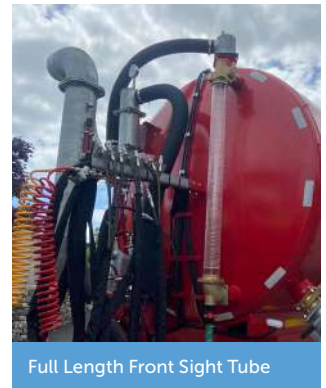
Lazy Arm & Docking Port



Top Fill Hatch



Applicator Ready



Full Length Front Sight Tube

# Docking Stations

## Technical Details

- Fully galvanised
- Available as 6" or 8"
- Standard female "A" frame linkage
- Bauer F, RSR inlet
- Bauer F, RSR return
- 12v Electric guillotine valves
- Docking cone c/w 4 bolt flange
- Remote controller
- Secure battery store
- 12v Leisure battery 70Ah



# STORTH

For additional information and advice  
please contact your Storth representative

**Andrew Howatson**

**07393 149 598**

[andrew@storthmachinery.co.uk](mailto:andrew@storthmachinery.co.uk)

**Sales Manager**

**Neil Robinson**

**07887 855 048**

[neil@storthmachinery.co.uk](mailto:neil@storthmachinery.co.uk)

**Gary Morland**

**07919 563 796**

[gary@storthmachinery.co.uk](mailto:gary@storthmachinery.co.uk)

**Geraint Williams**

**07464 548 576**

[geraint@storthmachinery.co.uk](mailto:geraint@storthmachinery.co.uk)

**Fi Callaway**

**07818 053 159**

[fi@storthmachinery.co.uk](mailto:fi@storthmachinery.co.uk)

**STORTH**  
EXPERTS IN SLURRY MANAGEMENT

Stoneleigh Park, Station Road,  
Holme, Nr Carnforth, Lancashire, LA6 1HR.

Manufactured in the UK

Tel: +44 1524 781 900

Email: [sales@storthmachinery.co.uk](mailto:sales@storthmachinery.co.uk)

**Global Sales**

**Julian Lopez**

**+44 (0) 7384 258 916**

[export@storthmachinery.co.uk](mailto:export@storthmachinery.co.uk)



[www.storthmachinery.co.uk](http://www.storthmachinery.co.uk)

V2406