



GASPARDO

Growing Together

Power Harrows

A range for every need





POWER HARROWS

A RANGE TO MEET EVERY NEED

With over 60 years of experience in the production of POWER HARROWS, MASCHIO GASPARDO offers one of the most comprehensive and reliable ranges available on the market, ensuring farmers worldwide can always choose a high-quality product suited both to small-scale farmers and large agricultural enterprises.

AGRONOMIC BENEFITS

- Optimal seedbed preparation
- Rapid sowing speed
- No creation of soil compaction layers
- Uniform leveling
- Consistent germination

SOIL CULTIVATION



Index

MASCHIO GASPARDO POWER HARROWS: a guarantee	04
Designed to last	06
SUPER upgrade	08
DELFINO DL - DELFINO SUPER	10
DRAGO DC	12
DOMINATOR DM	14
ORSO L - ORSO XL	16
CORVO	18
FALCO SUPER	20
GABBIANO SUPER	22
AQUILA SUPER - AQUILA SUPER RAPIDO	24
TORO SUPER RAPIDO	26
JUMBO SUPER RAPIDO	28
AQUILA - TORO - JUMBO SUPER ISOTRONIC	30
JUMBO X	32
Our rollers	34

POWER HARROWS

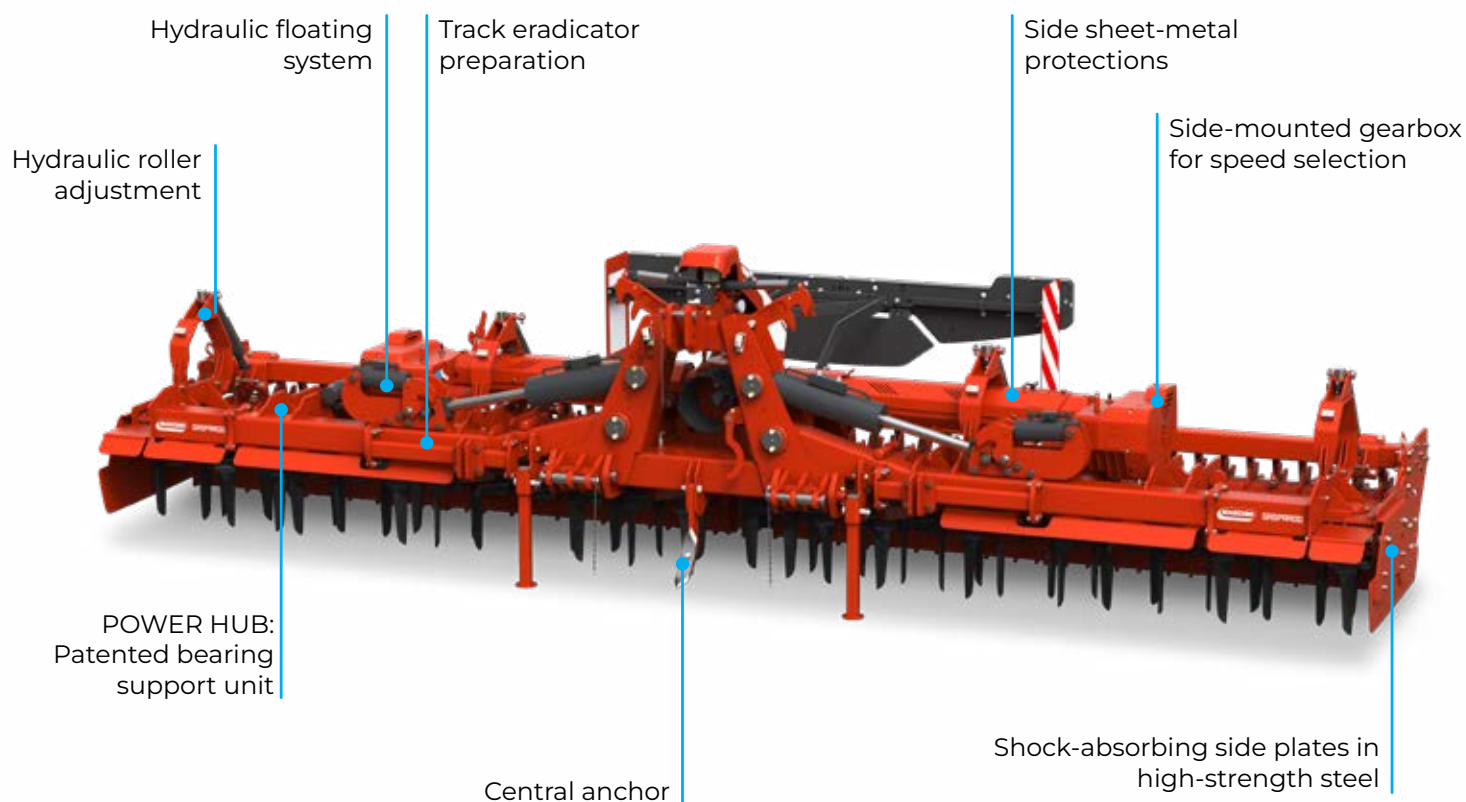
MASCHIO GASPARDO: a guarantee

A solution for every need

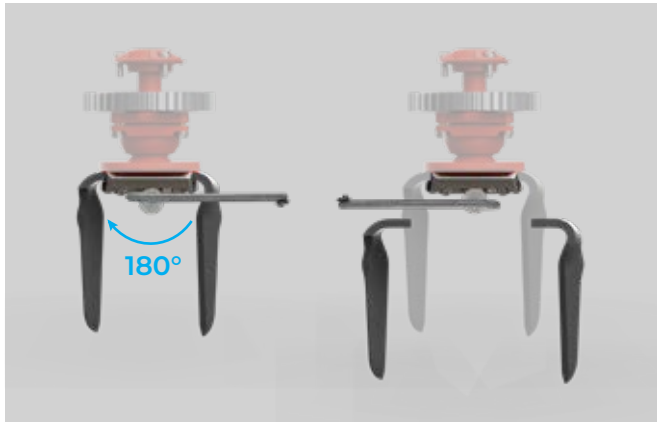
MASCHIO GASPARDO POWER HARROWS, available with fixed or folding frames, cover a wide range of working widths and compatible power outputs, from 1.30 to 10 meters, suitable for all tractors, including high-powered models.

Numerous roller types and optional accessories complete each machine to meet individual customer needs.

Suitable for any soil type, they consistently deliver high performance and optimal seedbed preparation.



TORO SUPER RAPIDO



Gearboxes

The central, side, or transfer gearboxes are all designed with the fewest possible gears, reducing friction and lowering fuel consumption. The bevel gear pairs have large-sized helical teeth, which increase the contact surface and minimize backlash inside the gearbox, significantly enhancing power transmission efficiency. Now, thanks to synthetic oil used in gearboxes, the maximum power rating has been increased by up to 8% in the SUPER series.

Double-layered Frame Structure

Composed of a double-frame construction with a thickness of 6 mm for the inner layer and 5 mm for the outer layer MASCHIO GASPARDO POWER HARROWS achieve greater rigidity and robustness, ensuring high performance under all operating conditions.

Quick-Release System

The patented quick-release system allows blades to be replaced quickly and safely within seconds. Blades are secured with a tempered pin, ensuring maximum reliability in any working condition.

Comparative Stress Testing

The double-layered frame increases rigidity and prevents deformation of the harrow without significantly increasing weight. The uniquely designed frame is made from high-strength steel.

Bearing Ball Retention Kit

At the bottom of each bearing is a metallic disc, whose function is to retain bearing balls in case of failure, preventing potential damage to the underlying gears.

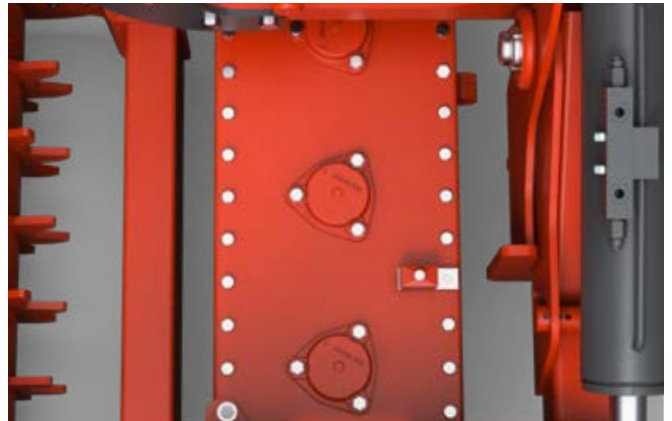
Rotor Shafts

The rotor shafts are machined by turning from a single forged piece of tempered steel. Gear splines and threads are produced through a pressure-forming (rolling) process rather than material removal, ensuring maximum metal strength and perfect gear coupling.



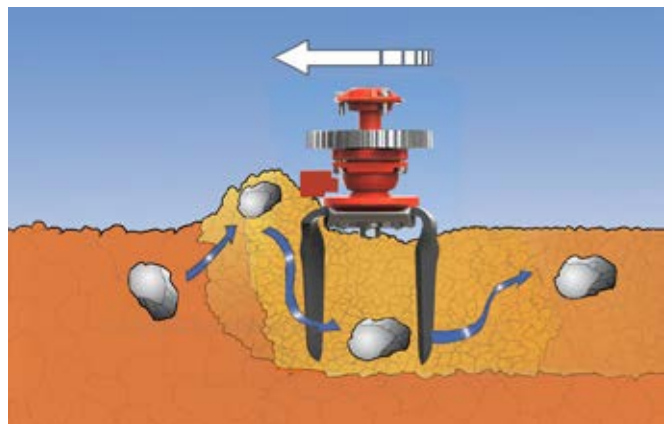
Upper Supports

Each blade-bearing shaft is equipped with a bolted upper support, requiring simple maintenance and ensuring greater stability of each rotor.



PLUS Stone Deflector

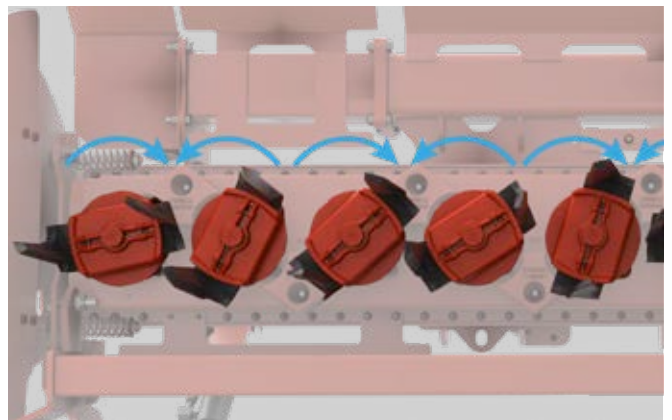
Protective wedges are bolted to the external frame, protecting the area between rotors from stones or other debris that could cause blockage or damage. This system provides complete protection, but when working on clean soil, stone deflectors can be easily removed to improve soil flow.



Smooth and Powerful

The reduced rotor spacing of only 246 mm (12 rotors in a 3-meter harrow) helps distribute torque more evenly, reducing power absorption. The unique rotor phasing ensures tools engage gradually into the soil, significantly easing forward movement during operation and greatly reducing vibration.

By placing rotors at a distance of 246 mm apart closer than competitors who typically offer wider spacing soil refinement is significantly improved.



Highest Quality Standards

Each blade is forged from tempered boron steel. The blade profile is specifically designed for optimal soil refinement under all field conditions. For highly abrasive soils, blades with tungsten reinforcement are also available.

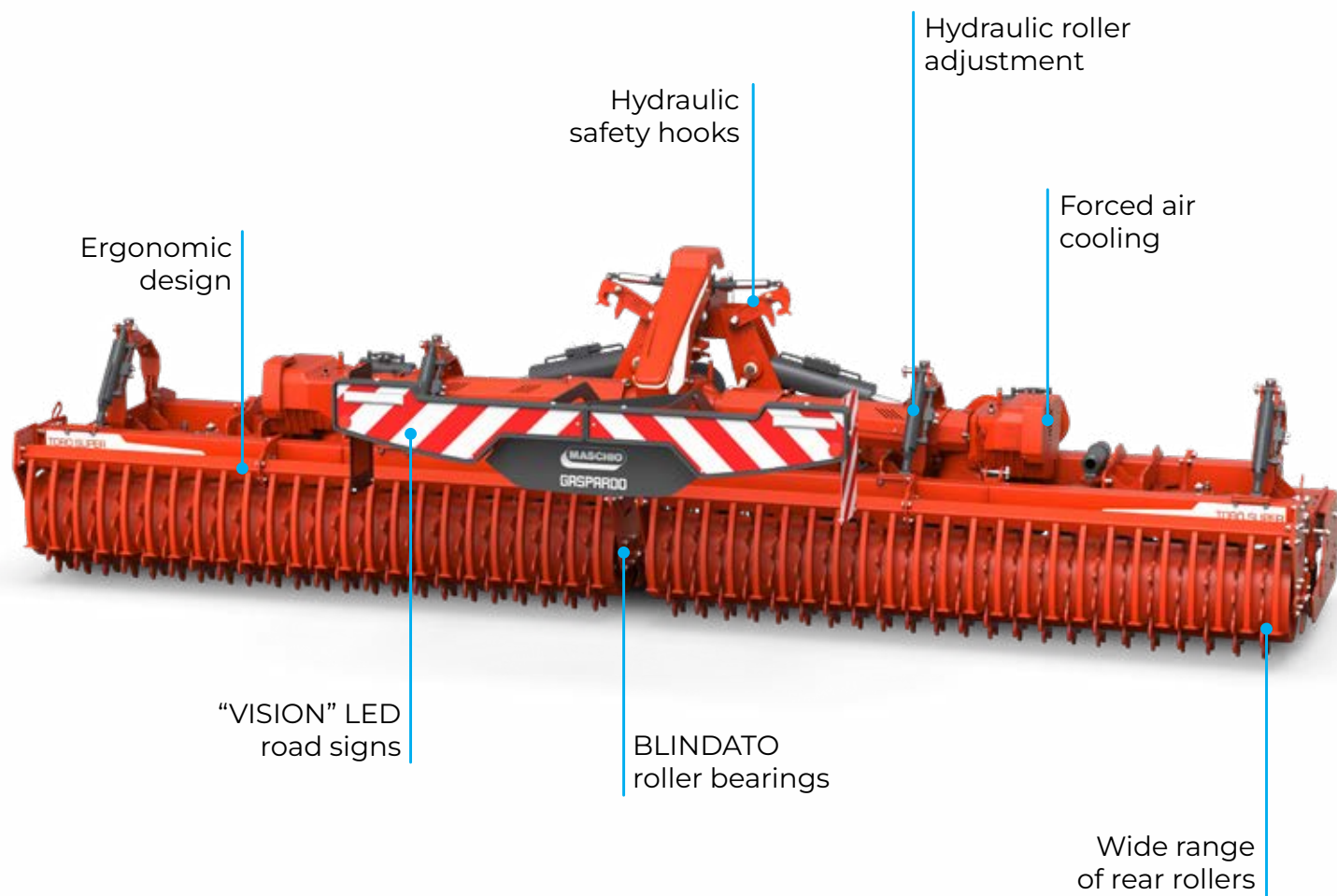


Designed to last

A solution for every need

The MASCHIO GASPARDO manufacturing philosophy prioritizes sturdy, powerful, and easy-to-maintain equipment. Large diameter hardened gears submerged in synthetic oil ensure smooth and consistent power transmission.

The bearings, positioned both above and below the gear, provide unparalleled stability and reduce mechanical stress.



TORO SUPER RAPIDO



MECHANICALLY EVEN MORE ROBUST WITH NEW UPGRADES

OUR SUPER AND SUPER ISOTRONIC MODELS

MASCHIO GASPARDO SUPER range is one of the most comprehensive and reliable on the market ensuring farmers worldwide always choose a high-quality innovative, reliable product with a fresh and appealing design.

This ergonomic design results from collaboration between MASCHIO GASPARDO's Research & Development department and the Scuola Italiana di Design (SID), enabling the creation of equipment with highly attractive styling.

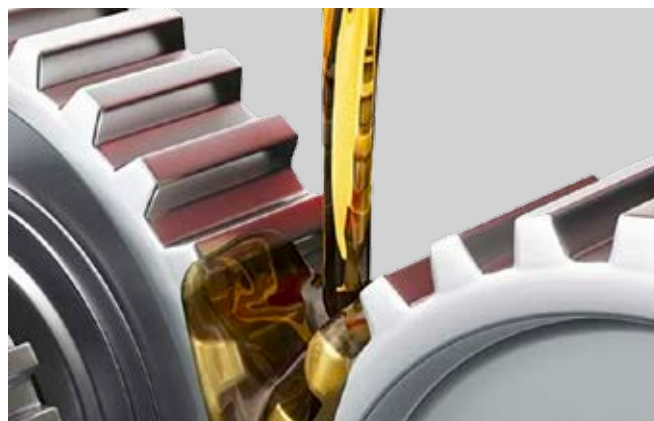
POWER HUB: patented bearing unit for blade support shafts

An integrated assembly comprising bearings and supports. This provides increased load capacity and improved resistance to contamination, utilizing a system of seals and mechanical labyrinths. This innovation is available on the TORO SUPER RAPIDO, JUMBO SUPER RAPIDO, and the entire SUPER ISOTRONIC range.



Increased available power

Compatible with higher-powered tractors thanks to the use of synthetic oil in gearboxes, ensuring lubrication for bearings and gears. Higher operating temperatures do not compromise the chemical and physical properties of this advanced oil.



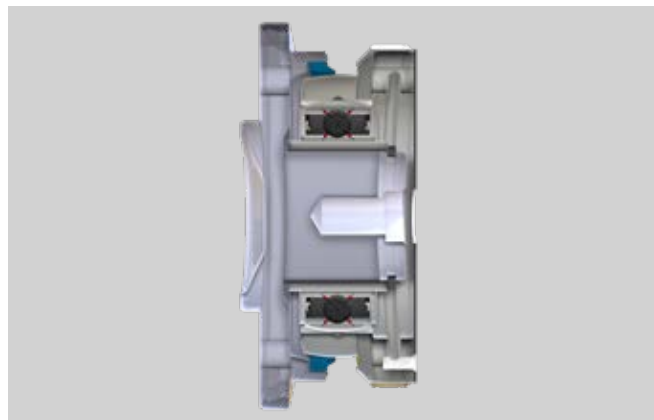
Modern design

The SUPER range includes a refreshed design with modernized road signs and lighting, ensuring an attractive and contemporary look to meet any challenge with optimal style.



"BLINDATO" shielded bearings on rear rollers (patented)

"BLINDATO" bearing-hub system for rear rollers features a special polyurethane sealing ring, completely isolating internal components from mud and dust. This system guarantees superior performance, greater load capacity, and reduced maintenance, tripling its lifespan compared to previous models.



Side driveshaft guards

Steel plates replace the previous plastic guards, offering enhanced safety, durability, and robustness, as well as easy lubrication access. Additionally, double grease nipples have been introduced on the driveshaft universal joints, simplifying and speeding up maintenance operations.



DELFINO DL - DELFINO SUPER

Fixed frame (up to 130 HP)



Entry-level machine with superior performance

DELFINO is the rotary harrow specifically designed for small-scale agricultural operations and specialized cultivation like horticulture, orchards, and vineyards. Particular attention to machine size and reduced weight make it an ideal implement for low-powered tractors. The distinctive blade design allows efficient soil refinement, significantly reducing operational costs. DELFINO is available in two versions: DELFINO DL (290 RPM) and DELFINO SUPER (352 RPM).



Superior-class performance

The robust coupling frame, shock-absorbing side protections, pin-adjusted roller depth, and unique blade design ensure consistent soil refinement over time, providing robustness typical of higher-class machines. An optional PLUS stone-deflector kit is available for compatibility with rocky soils.



DELFINO SUPER

The DELFINO SUPER version expands the model lineup with three wider sizes: 2.3 m, 2.5 m, and 3.0 m. Rotor speed increases to 352 RPM, improving soil refinement. Compatible with tractors from 65 to 130 HP, DELFINO SUPER performs effectively even on medium-textured soils or where crop residues are present.

COMPAGNA-DELFINO combination

DELFINO can be combined with the COMPAGNA seeder, creating an ideal solution for cover crop seeding and grassing in vineyards. COMPAGNA is available in widths from 1.5 to 3.0 meters and is suitable for sowing cereals in open fields.



	DELFINO DL	DELFINO SUPER
MODEL	1.300 - 1.500 - 1.800 - 2.000	2.300 - 2.500 - 3.000
Working width (m)	1,3 - 1,5 - 1,8 - 2,0	2,3 - 2,5 - 3,0
Hitch category (type)	I [^] - II [^]	II [^]
Tractor power (HP)	30 - 100	65 - 130
PTO (rpm)	540	540
Blades (n°)	10 - 12 - 14 - 16	18 - 20 - 24
Working depth (cm)	24	24
Stone deflector	optional	optional
Hydraulic roller adjustment	optional	optional
Weight* (kg)	504 - 587 - 615 - 692	757 - 818 - 937

*Weight indicated with Ø 450 mm CAGE roller



DAINO DS - DRAGO DC

Fixed frame (up to 150 HP)



Performance and reliability for medium-power tractors

DRAGO DC is the rotary harrow that meets the needs of small and medium-sized farms. Its robust construction, reduced weight, extensive range of accessories, and the possibility of combining it with MASCHIO GASPARDO seed drills make it the ideal machine to pair with medium-power tractors. DRAGO DC offers the possibility to adjust rotor RPM by changing gear pairs inside the gearbox, ensuring optimal soil refinement with minimal effort.



Hydraulic seed drill hitch

Thanks to the convenient coupling of the fixed harrow and seed drill, it is possible to perform soil cultivation and sowing in a single pass, significantly reducing costs and time.

With this kit, DRAGO DC can be combined with the mechanical cereal seed drills NINA and S-SC MARIA.

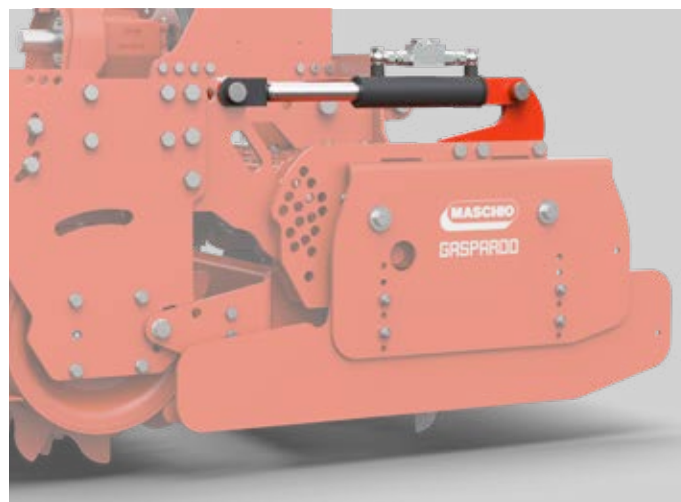


Front hitch

To enhance versatility, DRAGO DC can be equipped with a front hitch, allowing more combinations with other agricultural implements.

Depth adjustment

Working depth adjustment is managed by roller height using a standard pin system. Optional mechanical depth adjustment is available with side jack kits or hydraulic adjustment for increased operator comfort during operation.



	DAINO DS	DRAGO DC
MODEL	2.500 - 3.000	2.500 - 3.000
Working width (m)	2,5 - 3,0	2,5 - 3,0
Hitch category (type)	II ^	II ^
Tractor power (HP)	80 - 130	80 - 150
PTO (rpm)	540	540 / 750 / 1.000
Blades (n°)	20 - 24	20 - 24
Working depth (cm)	24	24
Stone deflector	optional	optional
Hydraulic roller adjustment	optional	optional
Weight* (kg)	974 - 1.084	1.060 - 1.192

*Weight indicated with Ø 450 mm CAGE roller



DOMINATOR DM

Fixed Frame (up to 200 HP)



High performance and low maintenance

DOMINATOR DM represents a superior-level rotary harrow, featuring stronger blade-bearing shafts and longer blades compared to other models in the range. The robust structure and gearbox for speed variation make it ideal for preparing uncultivated soils or fields with crop residues. Additionally, it's available with a quick blade-release system for greater maintenance convenience. Its strength and excellent soil refinement capabilities make DOMINATOR DM suitable for combination with DAMA PLUS, DAMA PLUS ISOTRONIC, ALIANTE PLUS, and ALITALIA ISOTRONIC combined seed drills.

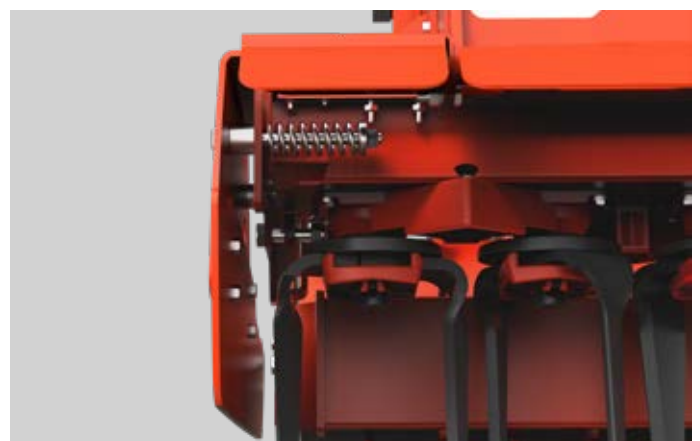
Parallelogram side protections

Connection to the machine frame via a parallelogram linkage enables the side plates to follow the ground profile closely, preventing soil accumulation and ridge formation at the sides. The parallelogram linkage also reduces transport width and risk of damage, making it the preferred choice for many farmers.



Spring-loaded side protections

In base models, side protections are spring-loaded, increasing lateral travel and facilitating the discharge of excess material. The spring tension can be easily adjusted via a bolt.





Gearbox speed adjustment

Gearbox speed adjustment comes standard on many models, allowing rotor speed customization according to specific field conditions. With a quick gear change, it's possible to choose between fuel economy and increased soil-working aggressiveness.

	DOMINATOR	DOMINATOR RAPIDO
MODEL	3.000 - 3.500 - 4.000	3.000 - 3.500 - 4.000
Working width (m)	3,0 - 3,5 - 4,0	3,0 - 3,5 - 4,0
Hitch category (type)	II ^	II ^
Tractor power (HP)	120 - 180	120 - 200
PTO (rpm)	540 / 750 / 1.000	540 / 750 / 1.000
Blades (n°)	24 - 28 - 32	24 - 28 - 32
Working depth (cm)	26	26
Stone deflector	optional	standard
Hydraulic roller adjustment	optional	optional
Weight (kg)	1.424 - 1.598 - 1.758	1.520 - 1.724 - 1.794

*Weight indicated with Ø 500 mm PACKER roller



ORSO L - ORSO XL

Fixed frame (up to 300 HP)

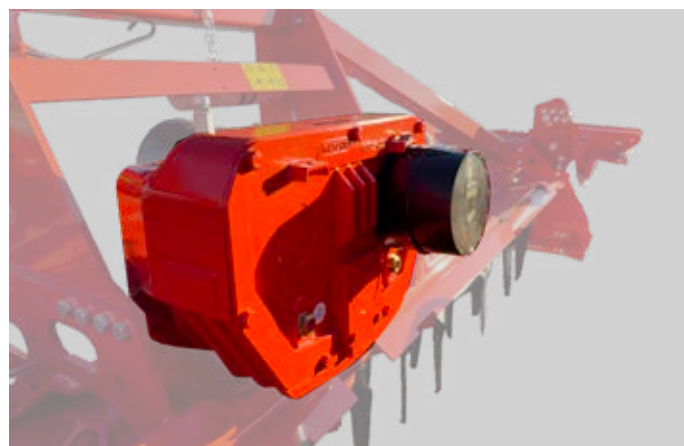


Strength and high performance

ORSO L and ORSO XL are powerhouses of performance and reliability. They feature quick blade-release as standard, an oversized gearbox, larger transmission shafts, the patented POWER HUB bearing unit, and the BLINDATO sealed rear roller bearing. Built for continuous and heavy-duty operations, these models are ideal for pairing with combined seed drills (DAMA, ALIANTE PLUS, and ALITALIA ISOTRONIC ranges), offering the advantages of combined seeding along with excellent soil refinement quality. The dual-thickness frame (6 mm internal, 5 mm external) increases structural strength and prevents torsion without significantly adding weight.

Gearbox

ORSO XL is equipped with a completely redesigned gearbox, with upgraded components and geometry compared to all other fixed POWER HARROWS. This ensures continuous operation without overheating, even in challenging conditions and in the presence of stones.



Oscillating linkages

All MASCHIO GASPARDO POWER HARROWS feature oscillating linkage arms on the two points of the three-point hitch, making connection easier and improving shock absorption during work.





POWER HUB bearing unit

This newly patented solution integrates the bearing and blade support unit into a single component. Thanks to its innovative design, it provides increased load capacity and superior sealing against contamination through a system of seals and mechanical labyrinths.

	ORSO L	ORSO XL
MODEL	3.000	3.000 - 3.500 - 4.000
Working width (m)	3,0	3,0 - 3,5 - 4,0
Hitch category (type)	II [^] - III [^]	II [^] - III [^]
Tractor power (HP)	120 - 250	120 - 300
PTO (rpm)	540 / 750 / 1.000	1.000
Blades (n°)	24	24 - 32
Working depth (cm)	28	28
Stone deflector	standard	standard
Hydraulic roller adjustment	optional	optional
Weight* (kg)	1.666	1.592 - 1.928 - 2.112

*Weight indicated with Ø 500 mm PACKER roller



Folding frame (up to 140 HP)



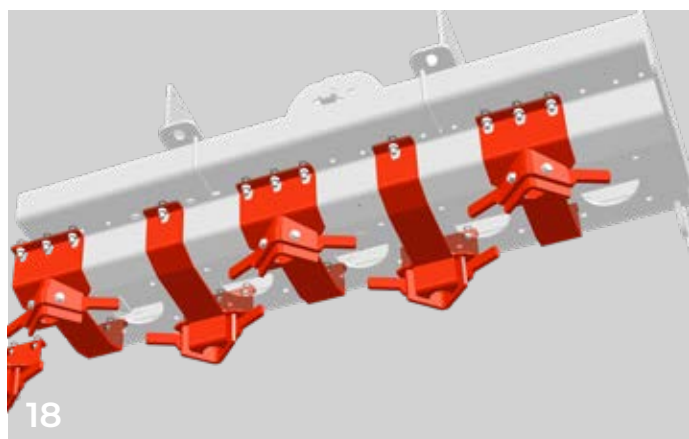
Greater reliability and safety thanks to new technical solutions

CORVO is the only folding rotary harrow in its category equipped with a monocoque transmission body. This design gives the machine exceptional lightness while still enabling it to work large areas, thanks to available working widths from 3.6 to 4 meters. Compatible with tractors from 100 HP, it is the perfect choice for farms without access to high-power equipment.



Gearbox

CORVO features a 1000 RPM gearbox. Power is transferred via two side PTO shafts to the lateral gear reducers, delivering rotor speed of 357 RPM.



Stone deflector bar

An optional stone deflector bar made from stamped steel is available. It can be bolted in either the front or rear position to prevent impacts that could damage the rotors.

Blades

The blades are bolted to a circular support shaft. This round shape significantly reduces impact force from stones and other debris, minimizing the risk of damage.



	CORVO
MODEL	3.600 - 4.000
Working width (m)	3,6 - 4,0
Hitch category (type)	II ^
Tractor power (HP)	100 - 140
PTO (rpm)	1.000
Blades (n°)	28 - 32
Working depth (cm)	24
Stone deflector	optional
Hydraulic roller adjustment	Not available
Weight* (kg)	1.700 - 1.820

*Weight indicated with Ø 450 mm PACKER roller



FALCO SUPER

Folding frame (up to 240 HP)



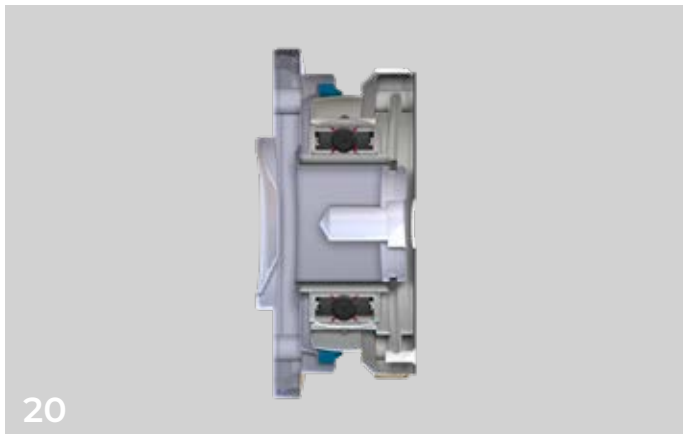
Greater reliability and safety thanks to new technical solutions

The FALCO SUPER model is a innovative, reliable, and safe product, featuring a modern and attractive design. This model is equipped with proven hardened and tempered gears, hardened blade support shafts, and HEAVY DUTY bearings suitable for tractors from 110 to 240 HP.



Safe road transport

In its folded transport position, FALCO SUPER closes to just 2.14 meters. The practical hydraulic safety system, operable directly from the tractor cab, eliminates the need to leave the seat during transport.

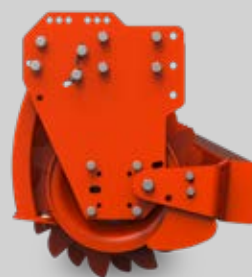


Long-Lasting Rear Rollers

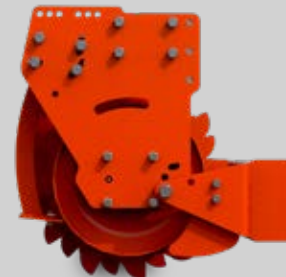
The new patented “BLINDATO” bearing-hub system for the rear roller has been reinforced and uses a special polyurethane sealing ring that completely isolates internal components from mud and dust. This ensures improved performance, increased load capacity, and reduced maintenance tripling the service life compared to previous versions.

Enhanced leveling bar

The oversized leveling bar, provides excellent soil refinement. This is achieved by holding the soil for longer under the action of the blades, delivering an unprecedented result.



OLD



NEW

	FALCO SUPER
MODEL	3.600 - 4.000 - 4.600 - 5.000
Working width (m)	3,6 - 4 - 4,6 - 5
Hitch category (type)	II [^] - III [^]
Tractor power (HP)	110 - 240
PTO (rpm)	1.000
Blades (n°)	28 - 32 - 36 - 40
Working depth (cm)	24
Stone deflector	optional
Hydraulic roller adjustment	optional
Weight* (kg)	2.102 - 2.262 - 2.650 - 2.540

*Weight indicated with Ø 450 mm CAGE roller



GABBIANO SUPER

Folding frame (up to 280 HP)



Mid-range, high performance: making things standard for folding models

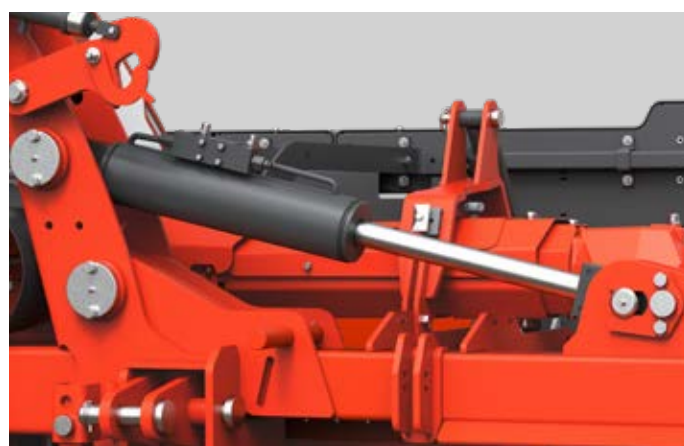
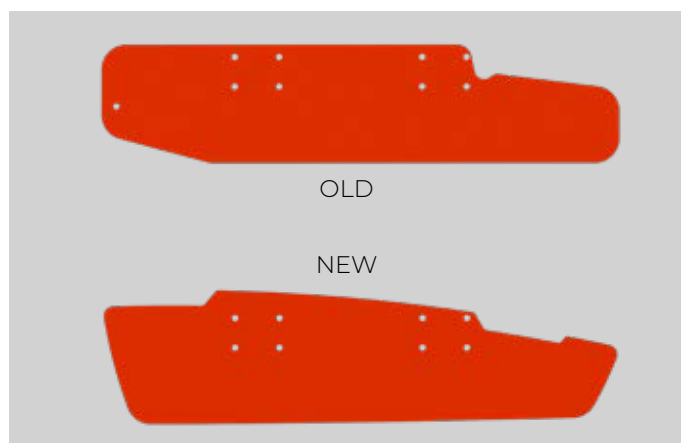
GABBIANO SUPER is the mid-range rotary harrow in the folding frame lineup. It combines the robustness of the HEAVY DUTY philosophy found in higher-end models with the compactness and maneuverability of lighter versions. The oversize leveling bar, together with others, enhances soil refinement. Alongside proven components like hardened and tempered gears, hardened blade support shafts, and HEAVY DUTY bearings, the required operating range is between 120 and 280 HP.

Side protection guards

The side protection guard shape allows for increased soil retention, helping to achieve an ideal seedbed across the entire working width, also increasing durability.

UP FLOATING system

Like the FALCO SUPER, GABBIANO SUPER is equipped with the floating system, which allows the two frame wings to move upward and follow the ground profile (negative inclination is featured in larger models such as TORO SUPER and JUMBO SUPER). This ensures excellent soil refinement in all soil types and working conditions.





Standard gear pair for side-speed gearbox

The side speed reducers allow the rotor RPM to be adjusted based on soil type and desired refinement level. Standard gear pair: 17-23 (PTO speed: 1000 RPM – Rotor speed: 357 RPM).

	GABBIANO SUPER
MODEL	4.000 - 4.600 - 5.000 - 6.000
Working width (m)	4 - 4,6 - 5 - 6
Hitch category (type)	II [^] - III [^]
Tractor power (HP)	120 - 280
PTO (rpm)	1.000
Blades (n°)	32 - 36 - 40 - 48
Working depth (cm)	26
Stone deflector	optional
Hydraulic roller adjustment	optional
Weight* (kg)	2.350 - 2.400 - 2.640 - 3.080

*Weight indicated with Ø 450 mm CAGE roller



AQUILA SUPER - AQUILA SUPER RAPIDO

Folding frame (from 150 HP)



Enhanced versatility and reliability for large-scale operations

AQUILA SUPER stands out for its robust mechanics, making it ideal for contractors and medium-to-large farms seeking versatility and reliability. This model features patented “BLINDATO” sealed bearing, the use of synthetic oil in the gearboxes, high-strength steel side plates, and telescopic side PTO guards. The leveling bar has a depth of 20cm which optimizes soil refinement. This models operating range is between 150 and 350 HP.

Forced air cooling

Starting from the AQUILA SUPER model, cooling fans come standard and act on the side gearboxes. This system keeps operating temperatures under control, even under prolonged stress.



Quick-latch pto guard

Assembly, disassembly, and maintenance of the PTO shaft have been greatly simplified thanks to a quick-latch protective guard. It opens easily with a few manual actions, using two locking clips-streamlining maintenance operations.





Combi kit with seeding bar exclusion

The combi kit with seed bar exclusion is compatible exclusively with AQUILA SUPER, AQUILA SUPER RAPIDO, and TORO SUPER RAPIDO models. It offers improved maneuverability and optimized headland soil preparation. The exclusion system allows the openers to be lifted up to 8 cm from the working plane, enabling use of the rotary harrow alone without subjecting seeding elements to unnecessary stress or wear.

	AQUILA SUPER	AQUILA SUPER RAPIDO
MODEL	4.600 - 5.000 - 6.000	
Working width (m)	4,6 - 5 - 6	4,6 - 5 - 6
Hitch category (type)	III^ - IV^	III^ - IV^
Tractor power (HP)	150 - 320	150 - 350
PTO (rpm)	1.000	1.000
Blades (n°)	36 - 40 - 48	36 - 40 - 48
Working depth (cm)	26	28
Stone deflector	optional	standard
Hydraulic roller adjustment	optional	standard
Weight* (kg)	2.930 - 3.145 - 3.450	2.980 - 3.250 - 3.600

*Weight indicated with Ø 450 mm CAGE roller



TORO SUPER RAPIDO

Folding frame (from 160 HP)



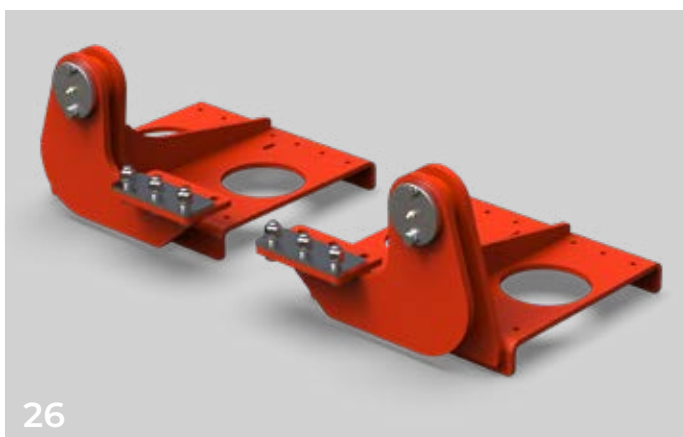
The next-generation rotary harrow

TORO SUPER RAPIDO is designed to meet the needs of the latest generation of high-power tractors. With working widths of up to 7 meters, it is built to handle large-scale fields when paired with tractors up to 400 HP. Thanks to its mechanical innovations, HEAVY DUTY construction, outstanding reliability, and long-term durability, TORO SUPER RAPIDO competes with the top-tier models available on the market.



Enhanced Reliability

POWER HUB is the new patented rotor bearing unit (standard from AQUILA SUPER onwards). The integrated rotor + bearing unit provides greater load capacity and, thanks to a series of seals, significantly extends service life by minimizing dust and mud infiltration.

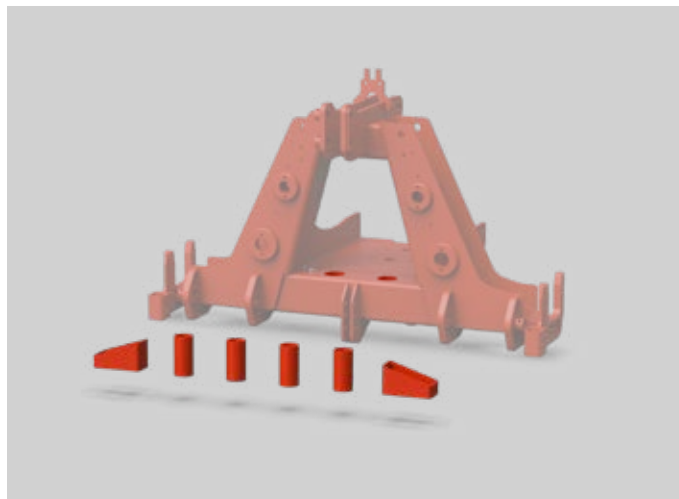


Unmatched robustness

The SUPER upgrade series includes numerous features. Among them, additional hinges have been introduced to eliminate the risk of wing deformation over time, ensuring long-lasting structural integrity.

No More Soil Buildup

Drainage holes on the bracket and lower frame beam prevent excessive accumulation of dust and soil. This dramatically reduces the risk of overheating caused by heat-retaining debris, while also preserving the smooth function of the folding frame's opening and closing mechanism.



	TORO SUPER RAPIDO
MODEL	5.000 - 6.000 - 7.000
Working width (m)	5 - 6 - 7
Hitch category (type)	III [^] - IV [^]
Tractor power (HP)	160 - 400
PTO (rpm)	1.000
Blades (n°)	40 - 48 - 56
Working depth (cm)	28
Stone deflector	standard
Hydraulic roller adjustment	standard
Weight* (kg)	3.520 - 4.145 - 4.490

*Weight indicated with Ø 450 mm CAGE roller



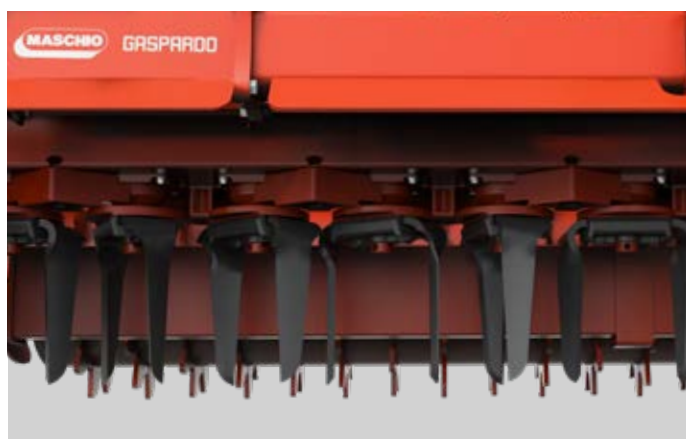
JUMBO SUPER RAPIDO

Folding frame (from 250 HP)



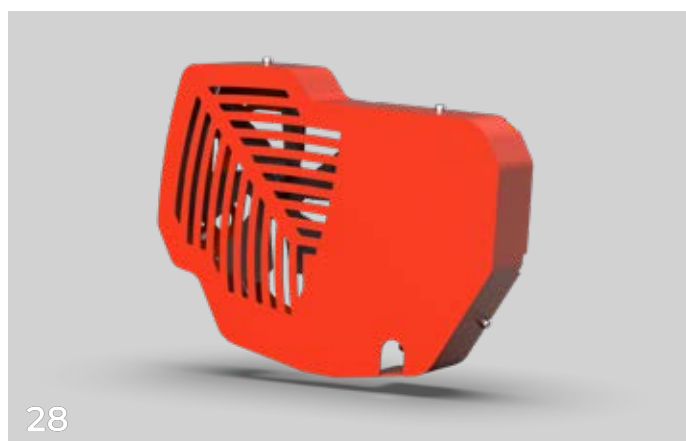
Reliability and power for large-scale contracting

JUMBO SUPER RAPIDO is the flagship rotary harrow from MASCHIO GASPARDO, designed for heavy-duty and continuous use-ideal for stony and heavy soils typical in contracting operations. Recently updated, it features an innovative design and optimized mechanics to ensure reliability and safety while simplifying and reducing maintenance requirements. Its HEAVY DUTY frame, with working widths up to 8 meters, allows JUMBO SUPER RAPIDO to be paired with tractors up to 550 HP, making it unique in the market.



All-inclusive!

JUMBO SUPER ISOTRONIC comes standard with top-tier equipment: tungsten-coated blades, stone deflectors, quick-release blade system all mounted on a welded support, not bolted (unlike many competitors). These features make it compatible with all high-powered tractors on the market.

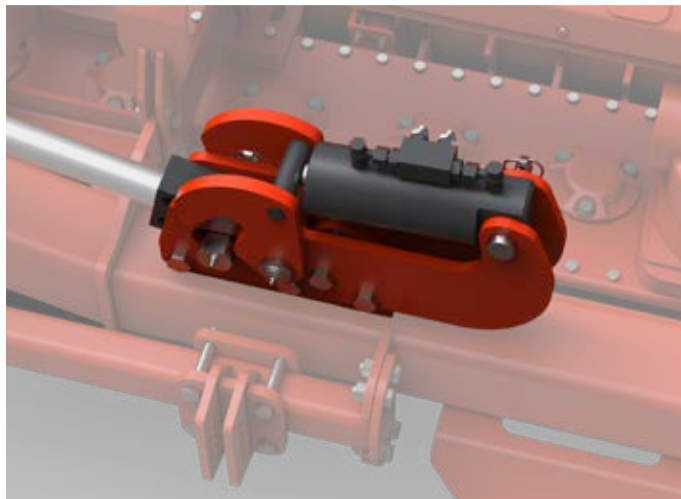


Cooling system

A common issue during intensive harrowing is gearbox overheating. JUMBO minimizes this risk with cooling fans and side fins on each gearbox to aid in heat dissipation. As an option, a forced oil recirculation pump is available for additional cooling performance.

Hydraulic floating system

This system allows the wings to follow field contours both upward (+4°) and downward (-2°), improving soil work quality for a uniform seedbed while reducing stress on both tractor and implement. It also helps lower fuel consumption and optimize performance on uneven ground, significantly boosting overall operational efficiency.



	JUMBO SUPER RAPIDO
MODEL	6.000 - 7.000 - 8.000
Working width (m)	6 - 7 - 8
Hitch category (type)	III^ - IV^
Tractor power (HP)	250 - 550
PTO (rpm)	1.000
Blades (n°)	48 - 56 - 64
Working depth (cm)	28
Stone deflector	standard
Hydraulic roller adjustment	standard
Weight* (kg)	4.490 - 4.890 - 5.400

*Weight indicated with Ø 450 mm CAGE roller



AQUILA-TORO-JUMBO SUPER ISOTRONIC

Folding frame (from 150 HP)



Reliability and power for large-scale contracting

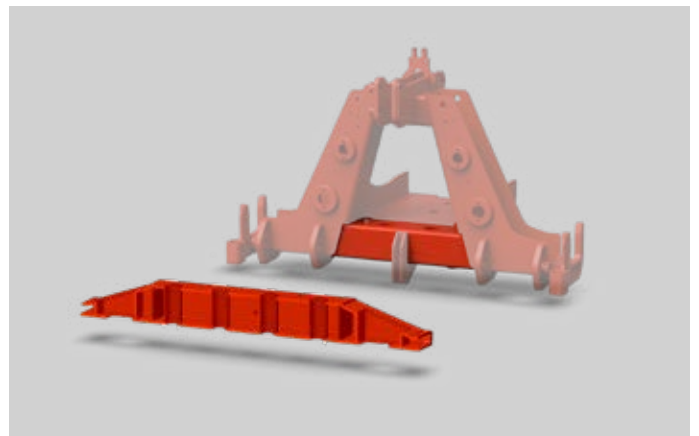
The SUPER ISOTRONIC range introduces the latest generation of high-end folding POWER HARROWS with ISOBUS communication protocol, represented by the AQUILA, TORO, and JUMBO SUPER ISOTRONIC models. These machines combine mechanical, structural, and electronic innovations, making them unique in the market. Soil refinement is further improved by a 20 cm leveling bar, effective even on heavy or clay-rich soils. The innovative ergonomic design also serves a functional purpose: it protects exposed components, improves spatial awareness, and increases the efficiency of key parts.

Gearbox oil cooling system

A recirculation reservoir for the central gearbox oil, integrated into the lower tube of the three-point hitch, ensures effective cooling and slows the degradation of the oil's properties.

“Free-power” system

A patented load cell allows for real-time monitoring of power absorption, enhancing the machine's efficiency, preventing damage to the rotary harrow, saving fuel, and reducing CO₂ emissions. Field tests have demonstrated the system's benefits in terms of fuel consumption and energy efficiency, confirming a reduction in fixed costs per hectare.





ISOBUS monitor control

ISOBUS features allow users to monitor and adjust all working parameters easily and intuitively through the ISOBUS terminal. This simplifies equipment operation, optimizes the harrow's lifespan, increases efficiency, and lowers operating costs. Work data can also be exported for targeted diagnostics and maintenance.

	AQUILA SUPER ISOTRONIC	TORO SUPER ISOTRONIC	JUMBO SUPER ISOTRONIC
MODEL	4.600 - 5.000 - 6.000	5.000 - 6.000 - 7.000	6.000 - 7.000 - 8.000
Working width (m)	4,6 - 5 - 6	5 - 6 - 7	6 - 7 - 8
Hitch category (type)	III^ - IV^	III^ - IV^	III^ - IV^
Tractor power (HP)	150 - 350	160 - 400	270 - 550
PTO (rpm)	1.000	1.000	1.000
Blades (n°)	36 - 40 - 48	40 - 48 - 56	48 - 56 - 64
Working depth (cm)	28	28	28
Stone deflector	standard	standard	standard
Hydraulic roller adjustment	standard	standard	standard
Weight* (kg)	3.375 - 3.700 - 4.300	4.000 - 4.385 - 5.000	4.232 - 5.382 - 5.969

*Weight indicated with Ø 450 mm CAGE roller



JUMBO X

Folding rotary harrow (from 450 HP)



The world's largest road-transportable rotary harrow

The new JUMBO X is a next-generation machine, engineered to deliver unmatched strength and high performance for farmers and contractors in all working conditions. Its patented technical and electronic innovations enhance soil refinement and optimize power absorption. JUMBO X is compatible with high-power tractors starting from 450 HP, with no upper limit, thanks to the patented "Free-Power" system, which monitors power usage to improve efficiency and prevent damage to the harrow.

Simplified work quality

JUMBO X features ISOTRONIC control (ISOBUS communication) for managing six hydraulic cylinders, working depth, three leveling bars, telescopic wing extension, and machine folding/unfolding. It is also equipped with temperature and RPM sensors on the gearboxes. Adjustments and working parameters can be managed comfortably and intuitively via the ISOBUS monitor.



Road transport

Thanks to its unique folding system with sliding side sections, the machine fits within legal road transport dimensions (height < 4 m, width < 3.1 m) for safe transit. Additionally, a transport trolley under the third-point hitch helps meet road clearance regulations and reduces the load on the tractor's lift system.





Power Transmission

Side and rear PTO shafts are protected by automatic cam-type torque limiters. The central gearbox transmits power to the side sections and includes a through shaft that directly connects the rear section to the tractor's PTO. This prevents additional stress on the central transfer gearbox. The machine is uniquely structured with three working sections, of which the side sections are sliding, allowing for an adjustable working width from 9 to 10 meters.

	JUMBO X
MODEL	10.000
Working width (m)	10
Hitch category (type)	III^ - IV^
Tractor power (HP)	from 450
PTO (rpm)	1.000
Blades (n°)	80
Working depth (cm)	28
Stone deflector	standard
Hydraulic roller adjustment	standard
Weight* (kg)	7.735

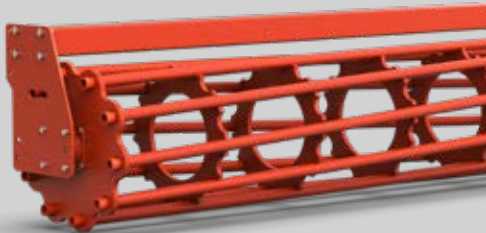
*Weight indicated with Ø 450 mm CAGE roller



The right roller for every need

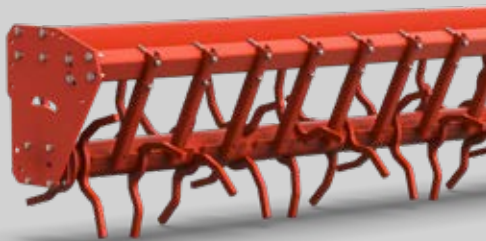
Functions and models

The rear roller has a dual function: it determines the working depth and reconsolidates the seedbed after harrowing. This ensures optimal seed-to-soil contact and promotes rapid, uniform germination during the following sowing phase.



GABBIA roller

Ideal for medium-textured soils and moderate moisture conditions, the GABBIA roller ensures precise control of working depth. Its leveling action refines the seedbed for impeccable preparation, delivering optimal and uniform results.



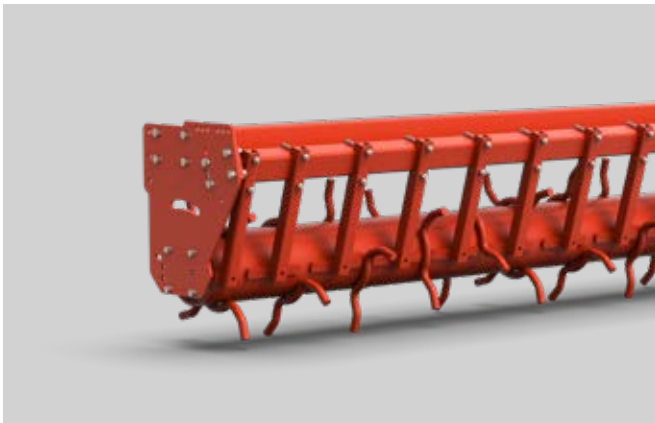
SPUNTONI roller

Equipped with long shaped round-bar teeth evenly spaced along the cylinder, the SPUNTONI roller offers unmatched versatility across all soil types. It does not compact the soil but leaves it aerated and leveled, making it ideal for surfaces already deep-plowed.



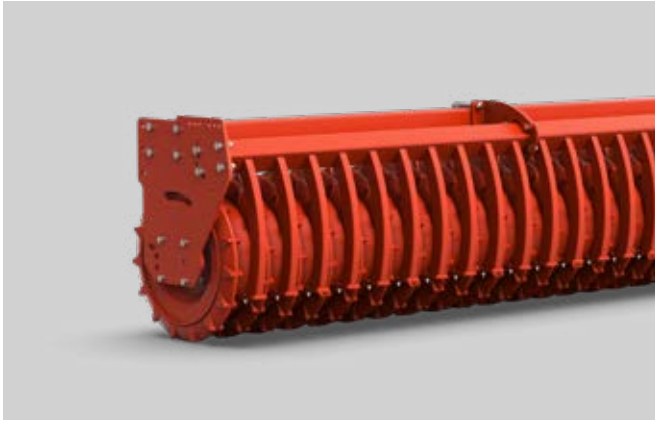
SPIROPACKER roller

With its spiral structure wrapped around a central shaft, the SPIROPACKER roller is perfect for light and sandy soils. It leaves a slightly cloddy surface and compacts deeper soil layers, creating ideal conditions for precise seeding even when using seed drills.



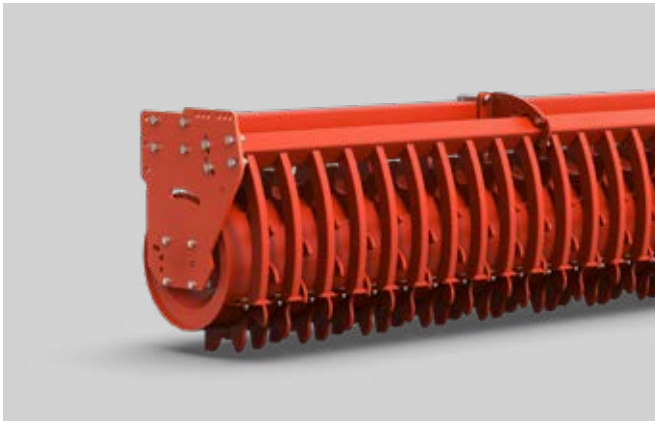
RISAIA roller

Specifically designed for rice field soils, the RISAIA roller features shaped teeth that provide precise and uniform tillage, ensuring consistent results even in the most demanding conditions.



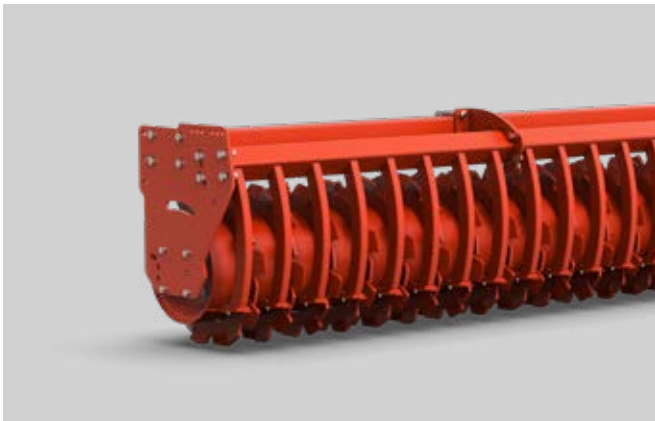
COMBIPACKER roller

Perfectly suited for use with combined seed drills, the COMBIPACKER roller features a wide tubular frame that ensures optimal rolling even in the presence of crop residues and uneven terrain. Specially designed rings ensure uniform and regular sowing, supporting optimal crop emergence..



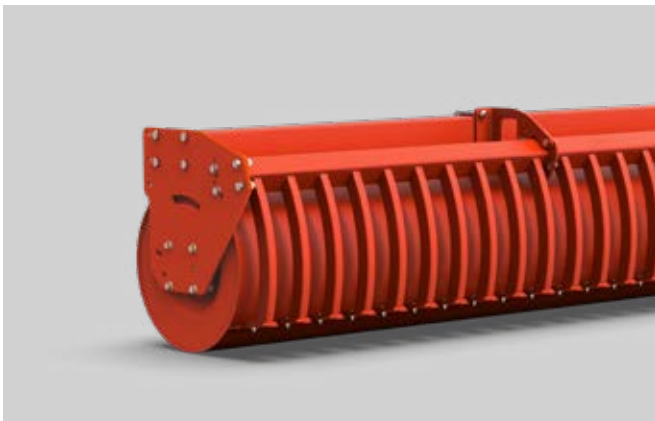
PACKER roller

Ideal for autumn work on moist soils, the PACKER roller breaks surface clods and compacts the soil for optimal seeding conditions. Its load-bearing capacity and scraper system (with optional tungsten) ensure constant cleaning, making it ideal for use with seed drills.



FLANGIATO roller

Designed for wet and clay-rich soils, the FLANGIATO roller levels and refines the soil with precision. Thanks to its alternating flanges, it operates without slipping, delivering a combined refining and leveling action for a perfect seedbed.



LISCIO roller

Developed for seedbed preparation on soft and sandy soils, the LISCIO roller is the ideal choice for horticultural crops. Its gentle and uniform action ensures a surface ready for vigorous plant growth.



GASPARDO

Growing Together



Visit our website:
www.maschiogaspardo.com



Download our App
MY MASCHIO GASPARDO

MASCHIO GASPARDO S.p.A. **Head office and production site**

Via Marcello, 73
I-35011 Campodarsego (PADOVA) - Italy
Tel. +39 02 82284000 - Fax +39 02 82284100
info@maschiogaspardo.com

May 2025 Cod. W00230191R
Maschio Gaspardo Marketing Dept.

For printing reasons, some pictures and images do not show the "EC" safety guards. Technical data and models shown in this catalogue are not binding. We reserve the right to revise the contents of this catalogue, to amend or improve the specifications without notice.