



**2021
UK COLLECTION**

MAGNUM®

MAGNUM BOOTS: FROM 0 TO 100 IN 39 YEARS

Magnum Boots evolved out of Hi-Tec Sports, the footwear company founded in 1974 by Frank van Wezel. It was Frank's love for sport that led him to build an innovative, lightweight, and instantly comfortable sports shoe.

The first Magnum boot was born in 1982 through a request from the FBI training centre for a strong and lightweight, athletically built, black tactical boot. Once the FBI spread the word, the demand came to supply this product nationwide, as more and more law enforcement and security personnel wanted the comfort and superlight performance our product provided.

With a solid reputation built across the USA, demand from around the world increased. As a result, the Magnum product range expanded to meet the wide range of high-performance needs of professionals working in high pressure environments globally.

Today, the Magnum brand is sold in almost 100 countries around the world. It is the first choice for law enforcement, fire, security, ambulance, hospitality-service, health-service, construction, and industrial professionals.



OUR AIM

Magnum is proud that our consumers are some of the bravest men and women on the planet, protecting us on a daily basis. They rely on our products to perform to the same exacting standards as they do.

Our aim is to continue to protect and serve these heroes by making the highest performing footwear, which always exceeds their demanding expectations, in all of the challenging environments they face.

Through our constant innovation, and belief that good enough is never enough, Magnum footwear will continue to push the boundaries of performance, to exceed the needs of today and of tomorrow.

OUR VALUES

PIONEERING

We must continue to innovate, just as we did with our very first product.

RESPONSIBLE

We keep the very highest standards, because lives depend on it.

UNCOMPROMISING

We never do things by halves. Using proven technologies, we bring globally certified performance products to market.

TRUSTWORTHY

We can always be relied on to exceed the strength, comfort, and protection of our customers.



WORLDWIDE STANDARDS

Magnum not only reaches but exceeds many safety specifications and requirements all over the world. We are experts in all areas of product testing to reassure our position as an active leader in the market place. We promise to be a trusted partner in delivering essential equipment.

EUROPEAN FOOTWEAR STANDARDS:

SAFETY FOOTWEAR:

EN ISO 20345 (SB) Toe protection tested with 200 J impact and 15kN compression force

OCCUPATIONAL FOOTWEAR:

EN ISO 20347 (OB) No toe protection against mechanical hazards provided

UPPER:

AN Ankle protection
WRU Water resistant upper leather
WR Water resistant footwear
FO Fuel and Oil-resistant outsole
E Energy absorption of the seat region shall be no less than 20 joules

OUTSOLE CERTIFICATION TERMS

CI Insulation against cold
HI Insulation against heat
HRO Heat resistant outsole compound tested at 300°C

SLIP RESISTANCE:

SRA Slip resistance on ceramic tile floor with NaLS
SRB Slip resistance on steel floor with glycerol
SRC Slip resistance on ceramic tile floor with NaLS and on steel floor with glycerol

PLATE AND TOE

P Penetration resistance outsole penetration force at least 1100 Newton

ANTI-STATIC:

A Electrical resistance between foot and ground of between 0.1 and 1000 Mega Ohms
S1 Footwear made from leather and other materials excluding all-rubber or all polymeric footwear + closed seat region + SB + A + E + FO
S2 S1 + WRU
S3 S2 + P + cleated outsoles

ASTM FOOTWEAR STANDARDS:

ASTM F2413:11 - Standard specification for performance requirements for protective (Safety) toe cap footwear

IMPACT RESISTANT - Must meet requirements of Compression Resistant footwear. Protection against impact energy of 101.7J

COMPRESSION RESISTANT - Must meet requirements of Impact Resistant footwear. Protection against compression force of 11,121N

PUNCTURE RESISTANT - Must meet requirements for Impact and Compression Resistant footwear. Protection against an applied force of 1200N

METATARSAL RESISTANT - Must meet both the requirements for Impact and Compression Resistant footwear. Protection of energy impact of 101.7J

ELECTRICAL HAZARD RESISTANCE (EH) - Protective footwear constructed or manufactured to be capable of withstanding the application of 18,000V (root mean square (rms)) at 60 Hz for 1 min with no current flow or leakage current in excess of 1.0 mA under dry conditions

CSA FOOTWEAR STANDARDS:

IMPACT RESISTANT FOOTWEAR - Protection against impact energy of 125J

PUNCTURE RESISTANT - Protection against an applied force of 1200N (steel pin test)

METATARSAL RESISTANT - Protection against impact using energy of 101.7J (impact velocity 2.99 + 0.06m/s)

ELECTRIC SHOCK RESISTANT - Capable of withstanding the application of 18,000V at 60Hz for 1 minute

SLIP RESISTANCE - Should follow ISO13287 in heel and flat contact modes using the following test surfaces:

Dry quarry tile

Quarry tile wetted with water

Stainless steel wetted with water

AS/NZS FOOTWEAR STANDARDS:

AS/NZS 2210.5:2009 - Occupational protective footwear - Specification for occupational footwear

AS/NZS 2210.3: 2009 - Occupational protective footwear - Specification for safety footwear

ICONS



WATERPROOF



**WATER
REPELLENT**



STAY CLEAN



INSULATED



WIDE WIDTHS



**COMPOSITE
TOE + PLATE**



**COMPOSITE
TOE**



**COMPOSITE
PLATE**



**STEEL
TOE+PLATE**



STEEL TOE



STEEL PLATE



**PUNCTURE
RESISTANT**



**SCANNER
SAFE**



**SLIP & OIL
RESISTANT**



ANTI-STATIC



**SHOCK
ABSORPTION**



**YKK
SIDE ZIPPER**



**YKK
SIDE ZIPPERS**



**ANKLE
PROTECTION**



**ELECTRICAL
HAZARD**



**BREATHABLE
MATERIAL**



**METATARSAL
PROTECTION**



**FLAME
RETARDANT**



**CUT RESISTANT
UPPER**



**LEATHER
UPPER**



HRO CERTIFIED



S3 CERTIFIED



SRC CERTIFIED

TECHNOLOGIES



The Vibram® Pentagrip outsole has been developed as an all terrain outsole. The hardness of the compound of this rubber outsole will endure various environments. The outsole compound and design ensures maximum grip and slip-resistance applying to global testing standards. Vibram® is the world leader in high performance rubber soles, combining quality, innovation and the best components for their specific use. Their outsoles are produced with three objectives; to guarantee the best performance, the maximum level of comfort and long lasting quality.

Cambrelle®

Cambrelle® is the world's leading footwear lining, with millions of satisfied customers around the globe. Consumers don't want to "sweat the small stuff" and Cambrelle® makes sure they don't have to by providing a level of performance that is more than a match for the demands of modern living, at work, at play or just day-to-day.

The comfort, durability and moisture management capabilities of Cambrelle® keep you one step ahead and able to take whatever life throws at you in your stride. Day after day, mile after mile, your feet will remain cool, comfortable and dry!

Agion®

Scent is no match for the power of Agion®.

Agion® is an EU regulated biocide containing silver zinc zeolite. The technology is built-in to our boots to combat odour causing bacteria on the treated surface. All day, all night – Agion® keeps it fresh.



You have enough things to worry about – odour shouldn't be one of them. Lava XL™ is a mineral based odour control technology that provides a strong shield of confidence as you go about your day. While other odour control technologies rely on laundering to regenerate, Lava XL™ self-regenerates, resulting in optimal performance in the most challenging conditions. Enjoy long-lasting performance with Lava XL™.

M2-PACT+

The M2-PACT+ insole features multiple layers making it our most comfortable footbed yet. The EVA contour moulded shell with heel cradle and strategically positioned pressure-point PU inserts gives superb underfoot cushioning and support. An Ortholite Impressions slow recovery foam layer offers a customised, comfortable fit and the moisture wicking top layer with Lava XL odour control technology provides all day freshness.

RECOIL

RECOIL comfort midsoles provide maximum comfort and shock absorption, by having 69%* more rebound than standard EVA. This ensures ultimate underfoot comfort and cushioning in any kind of activities and on any surface. These durable, long lasting midsoles are synonymous with resilience and cushioning, by absorbing the impact of each step and releasing higher rebound energy to minimize discomfort and injuries. *69% higher rebound compared with regular Magnum EVA compound.

KURIM®

To give your boots high abrasion resistance and protection, Kurim molded PU is the material of choice. This seamless looking composite material is lightweight and flexible, giving you increased protection against abrasion without hindering your movements. Kurim is also anti-slip due to its unique composition, which makes it ideal for lightweight, athletic boots.

Thinsulate INSULATION

3M™ Thinsulate™ Insulation is powerful and lightweight, holding body heat and allowing moisture to evaporate. Due to its very fine microfibers, Thinsulate provides increased retention of body heat, which means less bulk and increased freedom of movement. This insulation is highly customizable, with properties ranging from flame-resistance to water-resistance, increased stretching capacity and odour resistance. The Water-resistant footwear insulation keeps your feet dry, warm and comfortable, without unnecessary bulk and weight.

MICHELIN MACH 5 OUTSOLE



Specific anti-slip tread pattern

Siped sculpture for adhesion on slippery surfaces

Wide grooves positioning for excellent water evacuation and enhanced flexibility

Special arch design for better adherence

Side sculpture for maximum support

Heel brake for optimal braking

BENEFITS

- + COMFORT, FLEXIBILITY AND SUPPORT
- + OPTIMAL BRAKING AND GRIP
- + SPECIFIC ANTISLIP DESIGN FOR BOTH OUTDOOR & INDOOR

INSPIRED BY:

Michelin® Power Rain



INSPIRED BY:

Michelin® Pilot Alpin



Woc

WORK OUTDOOR COMPOUND

High abrasion resistance
Antistatic, oil resistant compound.

It can be both antistatic and electrostatic resistant on request.

COPYRIGHT © BY JV INTERNATIONAL S.R.L. 05/2014 - WARNING - This confidential document any and all specifications, drawings and data here in contained and the products manufactured in accordance with the said drawings, specifications and data are the exclusive property of JV International s.r.l. company, all over the world, either directly or indirectly, in whole or in part, participated by JV International, as the case may be in accordance with the provisions of any applicable National Laws and Regulations as well as of any applicable International Conventions for the protection of Intellectual Property Rights. Any disclosures, dissemination, copy, use, manufacture, advertising, and sale of the said drawings, specifications, data and products are

POWERED BY MICHELIN® TECHNICAL SOLES



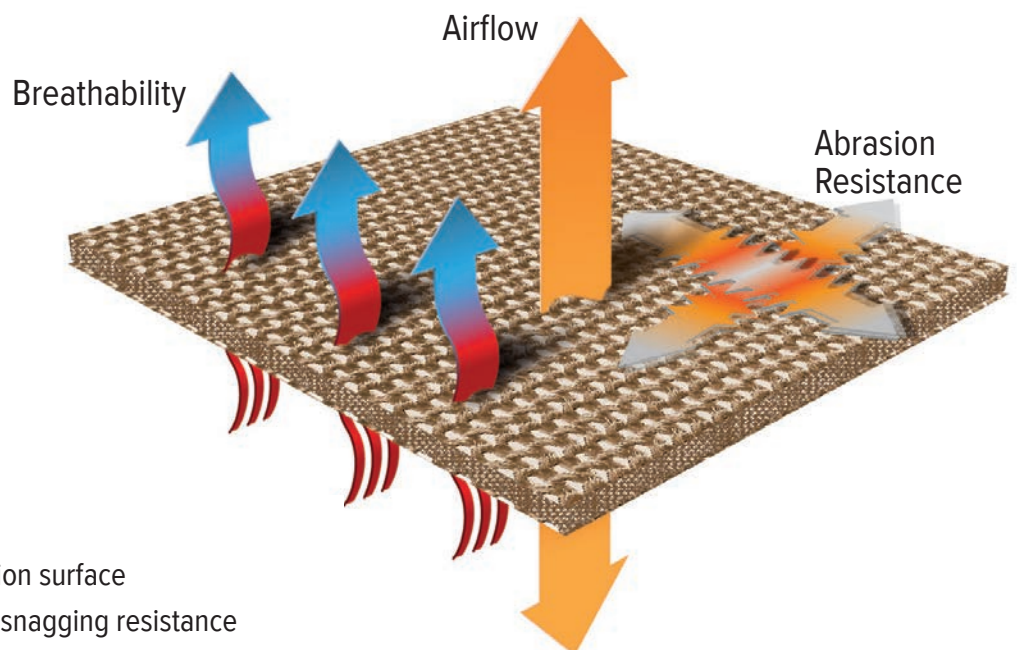


CORDURA® AFT (AIR FLOW TECHNOLOGY) 3D SPACER FABRIC



3D SPACER FABRIC

CORDURA® AFT (Air Flow Technology) 3D Spacer fabric is a highly breathable mesh construction with enhanced abrasion and snagging resistance and an excellent strength to weight ratio, helping ensure your boots are tough and durable.



BENEFITS

- + High breathability
- + High tenacity and abrasion surface
- + Enhanced abrasion and snagging resistance
- + Stylish durability and excellent strength-to-weight ratio

EXOGEL ULTIMATE IMPACT PROTECTION

ENERGY ABSORBING

Stiffens on impact to protect from injury.
Flexes when protection is not required for comfort.

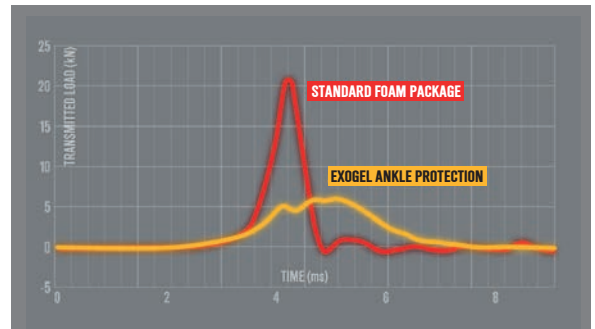
SELF REGENERATIVE

Sustains multiple impacts unlike
PU or EPS foams.

ERGONOMIC & FLEXIBLE

Lightweight allowing freedom of movement
& provides a stable performance over a
large range of conditions.

3X HIGHER IMPACT PROTECTION THAN FOAM



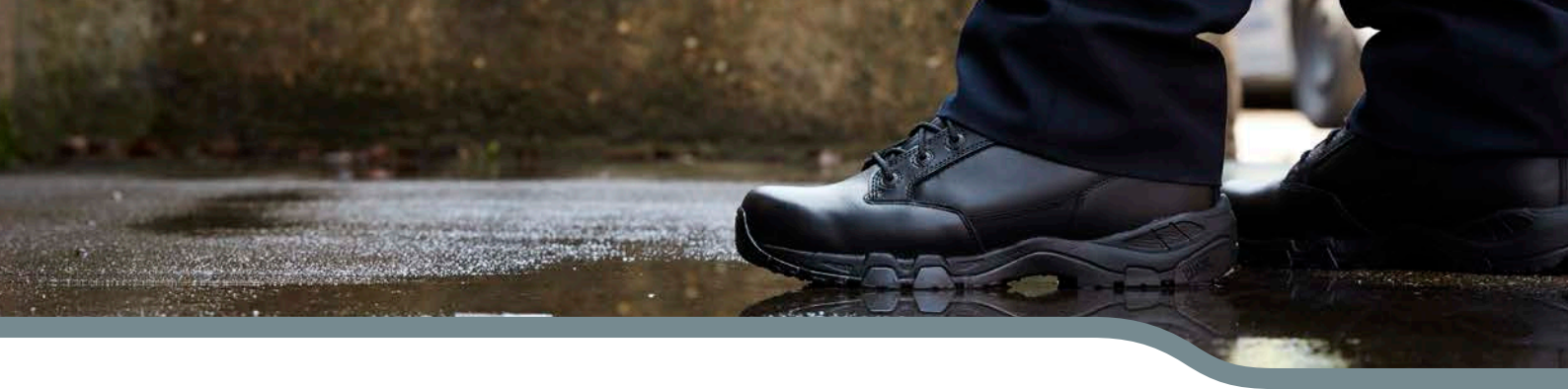
UNIFORM COLLECTION



PRODUCT OVERVIEW – NON-SAFETY

STYLE NAME	WATERPROOF	WATER RESISTANT	SIDE ZIP	SCANNER SAFE
NON SAFETY STYLES				
ELITE SPIDER X 8.0 SZ			➤	
ELITE SPIDER X 5.0				
STRIKE FORCE 8.0 SZ WP	➤		➤	➤
STRIKE FORCE 6.0 WP	➤			➤
VIPER PRO 8.0 WP+	➤			➤
VIPER PRO 8.0 SZ+			➤	➤
VIPER PRO 8.0+				➤
VIPER PRO 5.0 WP+	➤			➤
VIPER PRO 3.0+				➤
MAGNUM CLASSIC				
PATROL CEN		➤		
PANTHER SZ			➤	
PANTHER				
DUTY LITE				➤
ASSAULT TACTICAL 5.0				➤
STORM TRAIL LITE				

SLIP & OIL RESISTANT	SRC	HRO	CERTIFICATION
NON SAFETY STYLES			
➤		➤	EN ISO 20347:2012 OB E FO HI CI HRO SRA
➤		➤	EN ISO 20347:2012 OB E FO HI CI HRO SRA
➤	➤	➤	EN ISO 20347:2012 OB E FO HRO CI HI AN WR SRC
➤	➤	➤	EN ISO 20347:2012 OB E FO HRO CI HI AN WR SRC
➤			EN ISO 20347:2012 02 FO WR SRA
➤			N ISO 20347:2012 01 FO SRA
➤			EN ISO 20347:2012 01 FO SRA
➤			EN ISO 20347:2012 01 FO WR SRA
➤			EN ISO 20347:2012 01 FO SRA
➤			EN ISO 20347:2012 OB E FO SRA
➤		➤	EN ISO 20347:2012 OB E FO HI CI HRO WRU SRA
➤			EN ISO 20347:2012 OB E FO SRA
➤			EN ISO 20347:2012 OB E FO SRA
➤	➤		EN ISO 20347:2012 OB E SRC
			NON CERTIFIED
			NON CERTIFIED



ELITE SPIDER X 8.0

SIDEZIP



- Durable leather upper with hardwearing breathable CORDURA AFT 3D fabric air mesh vents
- Fast wicking lining for moisture management & comfort
- YKK side zipper with curved shaped for easy access
- Rustproof and anti-glare hardware
- External heel clip for improved support
- M-P.A.C.T POWER PU insole for maximum comfort & shock absorption
- Compression moulded RECOIL midsole absorbs impact and provides all-day support and comfort
- Vibram rubber outsole provides durability and outstanding traction
- Tested & certified to European Standard EN ISO 20347:2012 OB E FO HI CI HRO SRA



YKK
SIDE ZIPPER



SLIP & OIL
RESISTANT



HRO CERTIFIED

CODE: M801591/021 SIZES: UK 3 TO 14 EU 35 TO 48 WEIGHT: 0.615KG

ELITE SPIDER X 5.0

BLACK



- Durable leather upper with hardwearing breathable CORDURA AFT 3D fabric air mesh vents
- Fast wicking lining for moisture management & comfort
- Rustproof and anti-glare hardware
- External heel clip for improved support
- M-P.A.C.T POWER PU insole for maximum comfort & shock absorption
- Compression moulded RECOIL midsole absorbs impact and provides all-day support and comfort
- Vibram rubber outsole provides durability and outstanding traction
- Tested & certified to European Standard EN ISO 20347:2012 OB E FO HI CI HRO SRA



SLIP & OIL
RESISTANT

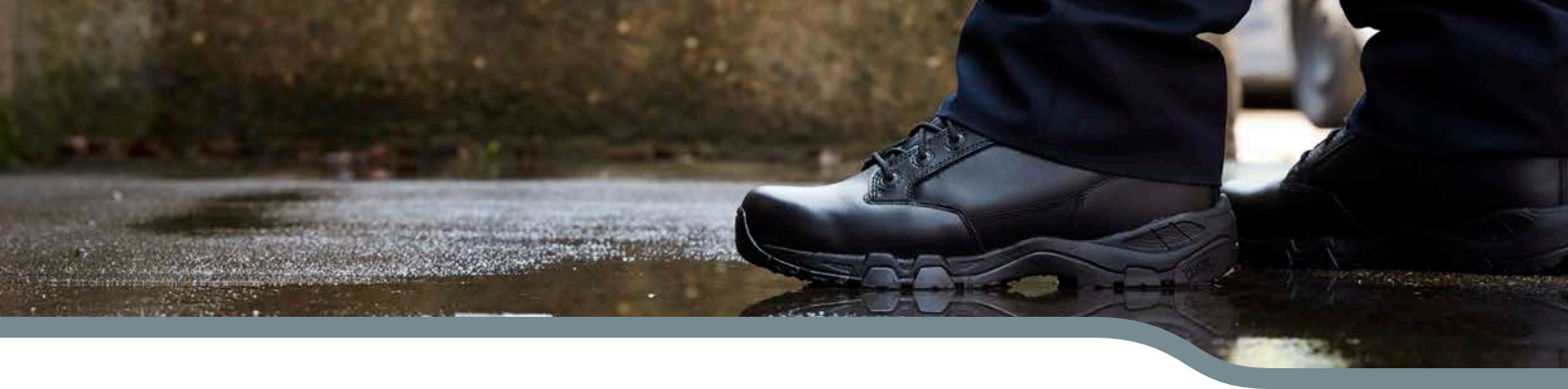


HRO CERTIFIED

CODE: M801599/021 SIZES: UK 3 TO 14 EU 35 TO 48 WEIGHT: 0.538KG

> THE UNIFORM COLLECTION

MAGNUM



STRIKE FORCE 8.0

SIDE ZIP WATERPROOF



- Durable leather upper with hardwearing breathable mesh panels
- Waterproof & breathable bootie membrane keeps feet dry with blood borne pathogen protection
- EXOGEL ultimate ankle impact protection
- Scanner safe non-metallic composite hardware
- Fast-wicking lining for moisture management & comfort
- M-P.A.C.T Response insole for maximum comfort & shock absorption
- Compression moulded RECOIL midsole absorbs impact and provides all-day support and comfort
- High traction slip & oil resistant MICHELIN outsole for maximum grip
- Tested & certified to European Standard
EN ISO 20347:2012 OB E FO HRO CI HI AN WR SRC



WATERPROOF



YKK
SIDE ZIPPER



SCANNER
SAFE



ANKLE
PROTECTION



SLIP & OIL
RESISTANT



HRO CERTIFIED



SRC
CERTIFIED

CODE: M801395/021 SIZES: UK 3 TO 14 EU 35 TO 48 WEIGHT: 0.620KG

STRIKE FORCE 6.0

WATERPROOF



- Durable leather upper with hardwearing breathable mesh panels
- Waterproof & breathable bootie membrane keeps feet dry with blood borne pathogen protection
- EXOGEL ultimate ankle impact protection
- Scanner safe non-metallic composite hardware
- Fast-wicking lining for moisture management & comfort
- M-P.A.C.T Response insole for maximum comfort & shock absorption
- Compression moulded RECOIL midsole absorbs impact and provides all-day support and comfort
- High traction slip & oil resistant MICHELIN outsole for maximum grip
- Tested & certified to European Standard
EN ISO 20347:2012 OB E FO HRO CI HI AN WR SRC



WATERPROOF



SCANNER
SAFE



ANKLE
PROTECTION



SLIP & OIL
RESISTANT



HRO CERTIFIED

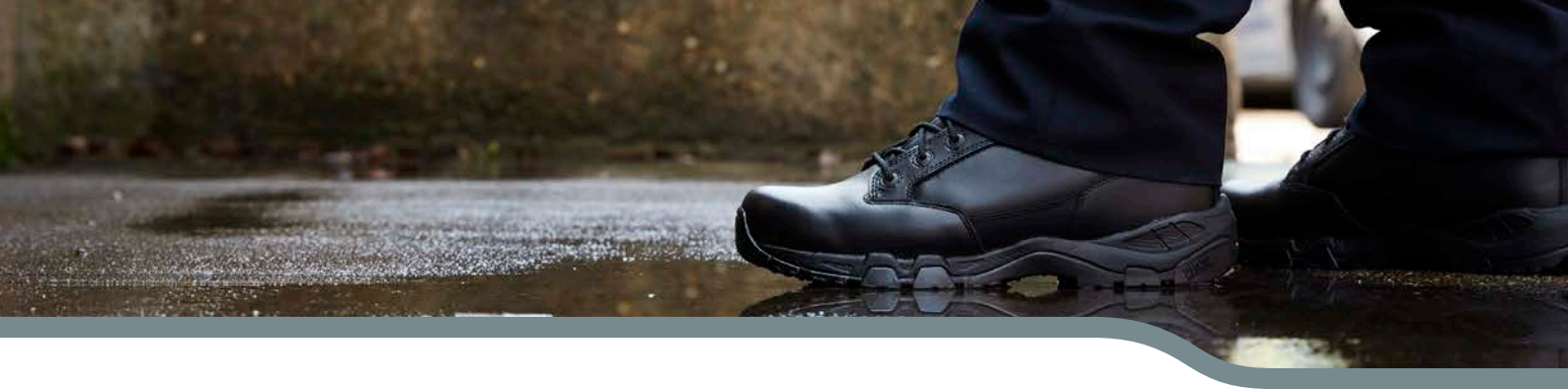


SRC
CERTIFIED

CODE: M801393/021 SIZES: UK 3 TO 14 EU 35 TO 48 WEIGHT: 0.560KG

> **THE UNIFORM COLLECTION**

MAGNUM



VIPER PRO 8.0+

LEATHER WATERPROOF



- Durable leather upper
- Ankle pads for added protection
- Scanner safe non-metallic composite hardware
- Waterproof & breathable bootie membrane keeps feet dry
- Fast wicking lining for moisture management & comfort
- M-P.A.C.T Response insole for maximum comfort & shock absorption
- EVA midsole for underfoot comfort
- High traction rubber outsole designed for maximum grip
- Tested & certified to European Standard EN ISO 20347:2012 02 FO WR SRA



WATERPROOF



ANTI-STATIC



SCANNER
SAFE



SLIP & OIL
RESISTANT

CODE: M800680/021 SIZES: UK 3 TO 14 EU 35 TO 48 WEIGHT: 0.580KG

VIPER PRO 8.0+

SIDE ZIP



- Durable leather upper with hardwearing breathable mesh panels
- Ankle pads for added protection
- Scanner safe hardware
- Fast wicking lining for moisture management & comfort
- M-P.A.C.T Response insole for maximum comfort & shock absorption
- EVA midsole for underfoot comfort
- High traction rubber outsole designed for maximum grip
- Tested & certified to European Standard EN ISO 20347:2012 01 FO SRA



YKK
SIDE ZIPPER



ANTI-STATIC



SCANNER
SAFE

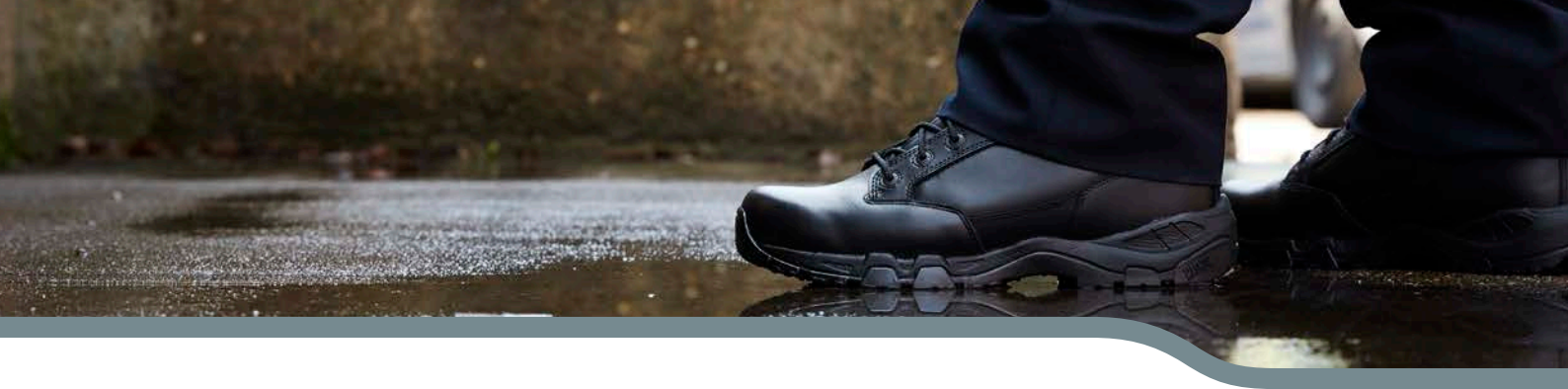


SLIP & OIL
RESISTANT

CODE: M800639/021 SIZES: UK 3 TO 14 EU 35 TO 48 WEIGHT: 0.580KG

> **THE UNIFORM COLLECTION**

MAGNUM



VIPER PRO 8.0+

BLACK



- Durable leather upper with hardwearing breathable mesh panels
- Ankle pads for added protection
- Scanner safe non-metallic composite hardware
- Fast wicking lining for moisture management & comfort
- M-P.A.C.T Response insole for maximum comfort & shock absorption
- EVA midsole for underfoot comfort
- High traction rubber outsole designed for maximum grip
- Tested & certified to European Standard EN ISO 20347:2012 01 FO SRA



ANTI-STATIC



SCANNER
SAFE



SLIP & OIL
RESISTANT

CODE: M800640/021 SIZES: UK 3 TO 14 EU 35 TO 48 WEIGHT: 0.560KG

VIPER PRO 5.0+

WATERPROOF



- Durable leather upper with hardwearing breathable mesh panels
- Ankle pads for added protection
- Scanner safe non-metallic composite hardware
- Waterproof & breathable bootie membrane keeps feet dry
- Fast wicking lining for moisture management & comfort
- M-P.A.C.T Response insole for maximum comfort & shock absorption
- EVA midsole for underfoot comfort
- High traction rubber outsole designed for maximum grip
- Tested & certified to European Standard EN ISO 20347:2012 01 FO WR SRA



WATERPROOF



ANTI-STATIC



SCANNER
SAFE

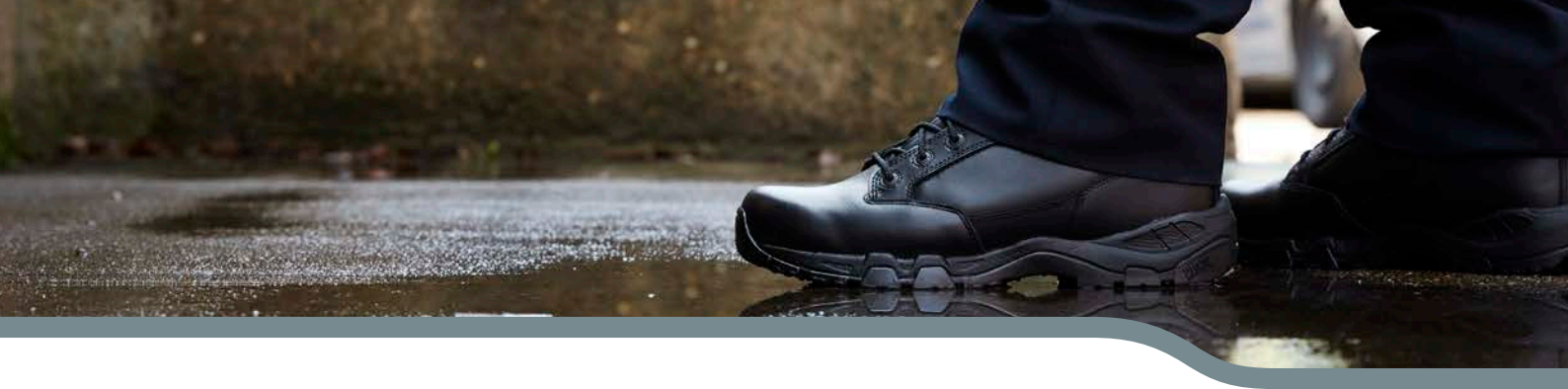


SLIP & OIL
RESISTANT

CODE: M800646/021 SIZES: UK 3 TO 15 EU 35 TO 49 WEIGHT: 0.530KG

THE UNIFORM COLLECTION

MAGNUM



VIPER PRO 3.0+

BLACK



- Durable leather upper with hardwearing breathable mesh panels
- Scanner safe non-metallic composite hardware
- Fast wicking lining for moisture management & comfort
- M-P.A.C.T Response insole for maximum comfort & shock absorption
- EVA midsole for underfoot comfort
- High traction rubber outsole designed for maximum grip
- Tested & certified to European Standard EN ISO 20347:2012 01 FO SRA



ANTI-STATIC



SCANNER
SAFE



SLIP & OIL
RESISTANT

CODE: M800643/021 SIZES: UK 3 TO 14 EU 35 TO 48 WEIGHT: 0.490KG

MAGNUM CLASSIC

BLACK



- Durable leather upper with hardwearing breathable mesh panels
- Durable rustproof hardware
- Fast wicking lining for moisture management & comfort
- EVA insole for shock absorption & comfort
- EVA midsole for underfoot comfort
- High traction rubber outsole designed for maximum grip
- Tested & certified to European Standard EN ISO 20347:2012 OB E FO SRA

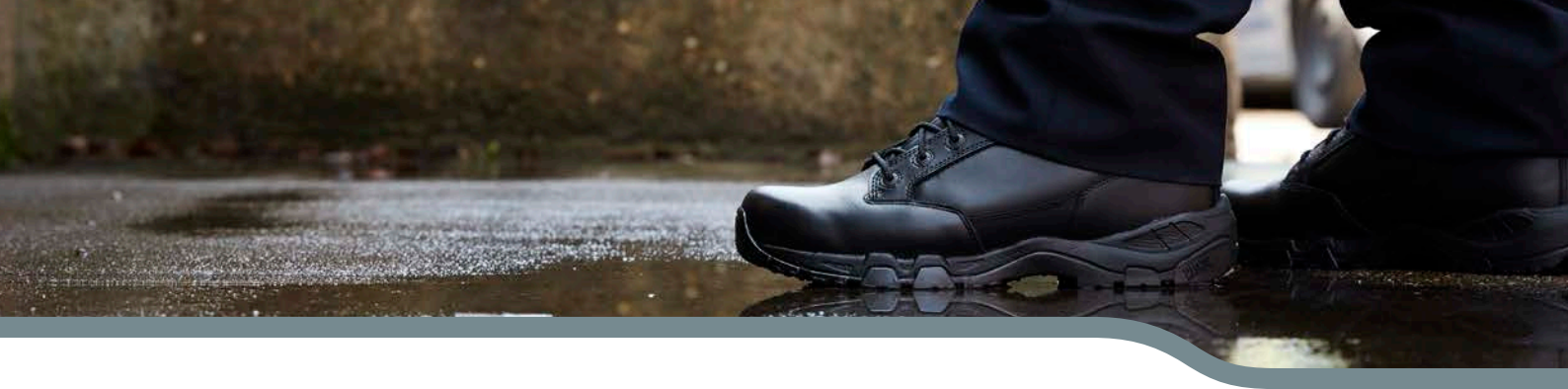


SLIP & OIL
RESISTANT

CODE: M800892/021 SIZES: UK 3 TO 14 EU 35 TO 48 WEIGHT: 0.580KG

> **THE UNIFORM COLLECTION**

MAGNUM



PATROL CEN

BLACK



- Durable full grain leather upper
- Durable rustproof hardware
- Fast wicking lining for moisture management & comfort
- Removable insole for underfoot cushioning & comfort
- High traction rubber outsole designed for maximum grip
- Tested & certified to European Standard
EN ISO 20347:2012 OB E FO HI CI HRO WRU SRA



WATER
RESISTANT



SLIP & OIL
RESISTANT



HRO CERTIFIED

CODE: M800290/021 SIZES: UK 3 TO 14 EU 35 TO 48 WEIGHT: 0.650KG

PANTHER 8.0

SIDE ZIP



- Durable leather upper with hardwearing breathable mesh panels
- Durable rustproof hardware
- Fast wicking lining for moisture management & comfort
- EVA insole for shock absorption & comfort
- High traction rubber outsole designed for maximum grip
- Tested & certified to European Standard
EN ISO 20347:2012 OB E FO SRA



YKK
SIDE ZIPPER



SLIP & OIL
RESISTANT

CODE: M800339/021 SIZES: UK 3.5 TO 14 EU 36 TO 48 WEIGHT: 0.700KG

> THE UNIFORM COLLECTION

MAGNUM



PANTHER 8.0

BLACK



- Durable leather upper with hardwearing breathable mesh panels
- Durable rustproof hardware
- Fast wicking lining for moisture management & comfort
- EVA insole for shock absorption & comfort
- High traction rubber outsole designed for maximum grip
- Tested & certified to European Standard EN ISO 20347:2012 OB E FO SRA



SLIP & OIL
RESISTANT

CODE: M800298/021 SIZES: UK 4 TO 15 EU 37 TO 49 WEIGHT: 0.670KG

DUTY LITE

BLACK



- Durable full grain leather upper
- Highly breathable lining for maximum comfort
- Compressed PU Comfort Insole delivers superior cushioning
- Slip resistant rubber outsole with PU midsole
- Tested & certified to European Standard EN ISO 20347:2012 OB E SRC



SCANNER
SAFE



SLIP & OIL
RESISTANT



SRC
CERTIFIED

CODE: M801355/021 SIZES: UK 3 TO 14 EU 35 TO 48 WEIGHT: 0.479KG

> **THE UNIFORM COLLECTION**

MAGNUM



ASSAULT TACTICAL 5.0

BLACK LACE



- Durable synthetic leather upper with breathable mesh panels and high abrasion resistant moulded Kurim panels
- Flexible foot forming construction
- Ankle brace for added support
- Robust ghillie lacing & closed hooks for secure lacing
- Fast wicking lining for moisture management & comfort
- Compression molded RECOIL midsole absorbs impact and provides all-day support and comfort
- Durable carbon rubber outsole with multi-directional lugs provides grip and durability



SCANNER
SAFE



SHOCK
ABSORPTION



VEGAN

CODE: M801527/021 SIZES: UK 6 TO 14 EU 39 TO 48 WEIGHT: 0.427KG

STORM TRAIL LITE

BLACK



- Tight weave technical mesh upper provides breathability and comfort
- Abrasion resistant PU overlays add support and protection
- Ghillie lacing system creates snug, secure fit
- Removeable molded EVA insole delivers underfoot cushioning
- Impact absorbing CMEVA midsole ensures long lasting cushioning and comfort
- Aggressive rubber outsole improves grip and durability



VEGAN

CODE: M801593/021 SIZES: UK 3 TO 13 EU 35 TO 47 WEIGHT: 0.296KG

THE UNIFORM COLLECTION



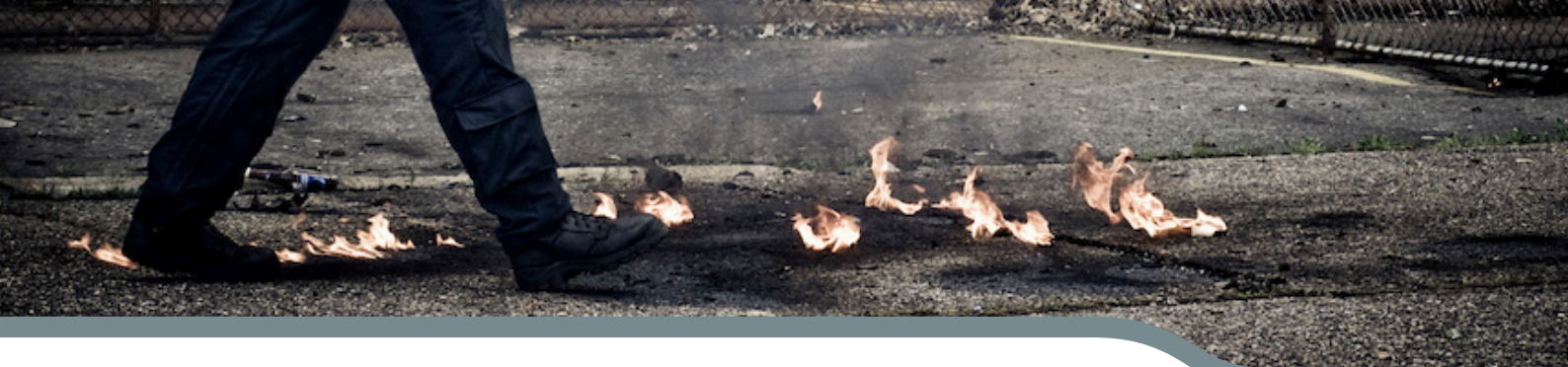
UNIFORM SAFETY & WORK SAFETY COLLECTION

PRODUCT OVERVIEW – SAFETY

STYLE NAME	WATERPROOF	INSULATED	FLAME RETARDANT	SIDE ZIP	SAFETY TOE	SAFETY PLATE
UNIFORM SAFETY STYLES						
ELITE SHIELD MET CT CP WP	➤		➤		➤	➤
STRIKE FORCE 6.0/8.0 CT CP SZ WP	➤			➤	➤	➤
STEALTH FORCE 6.0/8.0 CT CP					➤	➤
PANTHER ST					➤	
DUTY LITE CT					➤	
WORK SAFETY STYLES						
BROADSIDE 8.0 CT CP WP	➤	➤			➤	➤
BROADSIDE 6.0 CT CP WP	➤				➤	➤
RIGMASTER SZ CT CP WP	➤			➤	➤	➤
ROADMASTER CT CP					➤	➤
ROADMASTER MET CT CP					➤	➤
SITEMASTER LOW CT CP					➤	➤
SITEMASTER CT CP					➤	➤



SCANNER SAFE	ANTI-STATIC	SLIP & OIL RESISTANT	S3	HRO	SRC	CERTIFICATION
UNIFORM SAFETY STYLES						
	➤	➤	➤	➤	➤	EN ISO 20345:2011 S3 HI CI HRO WR SRC BS 7971-5 IM:2016 Type 2 Level 3 A CI
➤	➤	➤	➤	➤	➤	EN ISO 20345:2011 S3 HI CI HRO AN WR SRC
➤	➤	➤	➤	➤	➤	EN ISO 20345:2011 S3 HI CI HRO SRC
		➤		➤		EN ISO 20345:2011 SB E HI CI HRO AN SRA
➤		➤			➤	EN ISO 20345:2011 SB E SRC
WORK SAFETY STYLES						
➤	➤	➤	➤	➤	➤	EN ISO 20345:2011 S3 HI CI HRO WR SRC
➤	➤	➤	➤	➤	➤	EN ISO 20345:2011 S3 HI CI HRO WR SRC
➤	➤	➤	➤	➤	➤	EN ISO 20345:2011 S3 HRO WR SRC
➤	➤	➤	➤	➤	➤	EN ISO 20345:2011 S3 HRO WR SRC
➤	➤	➤	➤	➤	➤	EN ISO 20345:2011 S3 HRO WR SRC
➤	➤	➤	➤		➤	EN ISO 20345:2011 S3 WR SRC
➤	➤	➤	➤		➤	EN ISO 20345:2011 S3 WR SRC



ELITE SHIELD MET

COMPOSITE TOE COMPOSITE PLATE WATERPROOF METATARSAL PROTECTION



- Durable leather upper
- Flame retardant Nomex laces
- Durable rustproof hardware
- Cambrelle lining for increased moisture management
- PU foam insole for maximum comfort & shock absorption
- Internal Metatarsal Protection to Standard BS7971-5 IM:2016
- Vibram rubber outsole provides durability and outstanding traction
- Tested & certified to European Standard
BS 7971-5 IM:2016 Type 2 Level 3 A CI
& EN ISO 20345:2011 S3 HI CI HRO WR SRC



WATERPROOF



FLAME
RETARDANT



MET
GUARD



COMPOSITE
TOE + PLATE



ANTI-STATIC



SLIP & OIL
RESISTANT



S3 CERTIFIED



HRO CERTIFIED



SRC
CERTIFIED

CODE: M801547/021 SIZES: UK 3 TO 14 EU 35 TO 48 WEIGHT: 0.960KG



> THE UNIFORM COLLECTION

MAGNUM®



STRIKE FORCE 8.0

LEATHER COMPOSITE TOE COMPOSITE PLATE SIDEZIP WATERPROOF



- Durable water resistant leather upper
- Waterproof & breathable bootie membrane keeps feet dry with blood borne pathogen protection
- EXOGEL ultimate ankle impact protection
- Scanner safe hardware
- Fast wicking lining for moisture management & comfort
- M-P.A.C.T Response insole for maximum comfort & shock absorption
- Compression molded RECOIL midsole absorbs impact and provides all-day support and comfort
- High traction slip & oil resistant MICHELIN outsole for maximum grip
- Tested & certified to European Standard
EN ISO 20345:2011 S3 HI CI HRO AN WR SRC



CODE: M801551/021 SIZES: UK 3 TO 14 EU 35 TO 48 WEIGHT: 0.742KG

STRIKE FORCE 6.0

LEATHER COMPOSITE TOE COMPOSITE PLATE SIDEZIP WATERPROOF



- Durable water resistant leather upper
- Waterproof & breathable bootie membrane keeps feet dry with blood borne pathogen protection
- EXOGEL ultimate ankle impact protection
- Scanner safe hardware
- Fast wicking lining for moisture management & comfort
- M-P.A.C.T Response insole for maximum comfort & shock absorption
- Compression molded RECOIL midsole absorbs impact and provides all-day support and comfort
- High traction slip & oil resistant MICHELIN outsole for maximum grip
- Tested & certified to European Standard
EN ISO 20345:2011 S3 HI CI HRO AN WR SRC



CODE: M801550/021 SIZES: UK 3 TO 14 EU 35 TO 48 WEIGHT: 0.699KG



STEALTH FORCE 8.0

LEATHER COMPOSITE TOE COMPOSITE PLATE



- Durable leather upper
- Scanner safe non-metallic composite hardware
- Fast wicking lining for moisture management & comfort
- M2-P.A.C.T. insole with Ortholite Impressions and Lava XL odour control for customised comfort
- Slip-resistant X-Traction rubber outsole for grip and durability
- Tested & certified to European Standard EN ISO 20345:2011 S3 HI CI HRO SRC



COMPOSITE TOE + PLATE



SCANNER SAFE



ANTI-STATIC



ANKLE PROTECTION



SLIP & OIL RESISTANT



S3 CERTIFIED



HRO CERTIFIED



SRC CERTIFIED

CODE: M801430/021 SIZES: UK 3 TO 14 EU 35 TO 48 WEIGHT: 0.780KG

STEALTH FORCE 6.0

LEATHER COMPOSITE TOE COMPOSITE PLATE



- Durable leather upper
- Scanner safe non-metallic composite hardware
- Fast wicking lining for moisture management & comfort
- M2-P.A.C.T. insole with Ortholite Impressions and Lava XL odour control for customised comfort
- Slip-resistant X-Traction rubber outsole for grip and durability
- Tested & certified to European Standard EN ISO 20345:2011 S3 HI CI HRO SRC



COMPOSITE TOE + PLATE



SCANNER SAFE



ANTI-STATIC



ANKLE PROTECTION



SLIP & OIL RESISTANT



S3 CERTIFIED



HRO CERTIFIED



SRC CERTIFIED

CODE: M801429/021 SIZES: UK 3 TO 14 EU 35 TO 48 WEIGHT: 0.680KG

> THE UNIFORM COLLECTION

MAGNUM



PANTHER 8.0

STEEL TOE



- Durable leather upper with hardwearing breathable mesh panels
- Durable rustproof hardware
- Fast wicking lining for moisture management & comfort
- Contour moulded insole for underfoot cushioning & comfort
- High traction rubber outsole designed for maximum grip
- Tested & certified to European Standard
EN ISO 20345:2011 SB E HI CI HRO AN SRA



STEEL TOE



SLIP & OIL
RESISTANT

CODE: M800173/021 SIZES: UK 7 TO 13 EU 41 TO 47 WEIGHT: 0.790KG

DUTY LITE

COMPOSITE TOE



- Durable full grain leather upper
- Highly breathable lining for maximum comfort
- Compressed PU Comfort Insole delivers superior cushioning
- Slip resistant rubber outsole with PU midsole
- Tested & certified to European Standard
EN ISO 20345:2011 SB E SRC



COMPOSITE
TOE



SCANNER
SAFE



SLIP & OIL
RESISTANT



SRC
CERTIFIED

CODE: M801357/021 SIZES: UK 3 TO 14 EU 35 TO 48 WEIGHT: 0.623KG

> **THE UNIFORM COLLECTION**

MAGNUM

MAGNUM BROADSIDE

PREMIUM TECHNICAL 8" AND 6" S3 BOOTS

THE BROADSIDE IS THE LATEST DEVELOPMENT IN MAGNUM'S COLLECTION OF WORK SAFETY BOOTS. AVAILABLE AS A 6" WATERPROOF OR 8" THINSULATE INSULATED WATERPROOF BOOT, THE BROADSIDE FEATURES A TECTUFF TOE AND MICHELIN SOLE.

IDEAL PROTECTION IN HARSH OUTDOOR CONDITIONS



SOLES
BY



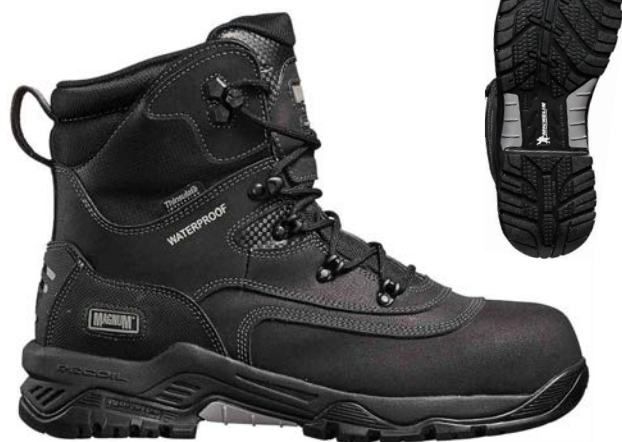
MICHELIN

RECOIL

Ortholite®

BROADSIDE 8.0

COMPOSITE TOE COMPOSITE PLATE WATERPROOF INSULATED



- Durable water resistant leather and synthetic upper
- Waterproof & breathable bootie membrane keeps feet dry
- 200g Thinsulate insulated lining keeping feet warm
- TecTuff toe for improved durability and abrasion resistance
- Scanner safe non-metallic composite hardware
- OrthoLite Impressions insole with slow recovery foam delivers superior cushioning
- Compression moulded RECOIL midsole absorbs impact and provides all-day support and comfort
- High traction slip and oil resistant MICHELIN outsole for maximum grip
- Tested & certified to: EN ISO 20345:2011 S3 HI CI HRO WR SRC



WATERPROOF



INSULATED



COMPOSITE
TOE + PLATE



SCANNER
SAFE



ANTI-STATIC



SLIP & OIL
RESISTANT



S3 CERTIFIED



HRO CERTIFIED



SRC
CERTIFIED

CODE: M801553/021 SIZES: UK 5 TO 13 EU 38 TO 47 WEIGHT: 0.747KG

BROADSIDE 6.0

COMPOSITE TOE COMPOSITE PLATE WATERPROOF



- Durable water resistant leather and synthetic upper
- Waterproof & breathable bootie membrane keeps feet dry
- TecTuff toe for improved durability and abrasion resistance
- Scanner safe non-metallic composite hardware
- OrthoLite Impressions insole with slow recovery foam delivers superior cushioning
- Compression moulded RECOIL midsole absorbs impact and provides all-day support and comfort
- High traction slip and oil resistant MICHELIN outsole for maximum grip
- Tested & certified to: EN ISO 20345:2011 S3 HI CI HRO WR SRC



WATERPROOF



COMPOSITE
TOE + PLATE



SCANNER
SAFE



ANTI-STATIC



SLIP & OIL
RESISTANT



S3 CERTIFIED



HRO CERTIFIED



SRC
CERTIFIED

CODE: M801552/021 SIZES: UK 5 TO 13 EU 38 TO 47 WEIGHT: 0.714KG

THE WORK COLLECTION

MAGNUM

PRECISION RIGMASTER

SIDE ZIP COMPOSITE TOE COMPOSITE PLATE WATERPROOF



- Durable waterproof full grain leather upper
- Waterproof & breathable bootie membrane keeps feet dry
- Scanner safe hardware
- Hardwearing protective TPU toe guard
- Fast wicking lining for moisture management & comfort
- Magnum Comfort Plus insole for maximum comfort & shock absorption
- PU high density midsole for long lasting support
- High traction rubber outsole designed for maximum grip
- Tested & certified to: EN ISO 20345:2011 S3 HRO WR SRC



WATERPROOF



YKK
SIDE ZIPPER



COMPOSITE
TOE + PLATE



SCANNER
SAFE



ANTI-STATIC



SLIP & OIL
RESISTANT



S3 CERTIFIED



HRO CERTIFIED



SRC
CERTIFIED

CODE: M801365/021 SIZES: UK 5 TO 14 EU 38 TO 48 WEIGHT: 0.840KG

ROADMASTER

COMPOSITE TOE COMPOSITE PLATE



- Durable full grain leather upper
- Hardwearing protective TPU toe guard & moulded heel support
- Scanner safe non-metallic composite hardware
- Fast wicking lining for moisture management & comfort
- Contour moulded insole for underfoot cushioning & comfort
- PU high density midsole for long lasting support
- High traction rubber outsole designed for maximum grip
- Tested & certified to: EN ISO 20345:2011 S3 HRO WR SRC



WATER
RESISTANT



COMPOSITE
TOE + PLATE



SCANNER
SAFE



ANTI-STATIC



SLIP & OIL
RESISTANT



S3 CERTIFIED



HRO CERTIFIED



SRC
CERTIFIED

CODE: M801231/021 SIZES: UK 5 TO 14 EU 38 TO 48 WEIGHT: 0.810KG

THE WORK COLLECTION

MAGNUM

ROADMASTER MET

COMPOSITE TOE COMPOSITE PLATE METATARSAL BOOT



- Durable full grain leather upper
- Poron XRD Flexible Internal Metatarsal Protection
- Hardwearing protective TPU toe guard & moulded heel support
- Scanner safe non-metallic composite hardware
- Fast wicking lining for moisture management & comfort
- Contour moulded insole for underfoot cushioning & comfort
- PU high density midsole for long lasting support
- High traction rubber outsole designed for maximum grip
- Tested & certified to: EN ISO 20345:2011 S3 M HRO WR SRC



WATER
RESISTANT



COMPOSITE
TOE + PLATE



METATARSAL
PROTECTION



SCANNER
SAFE



ANTI-STATIC



SLIP & OIL
RESISTANT



S3 CERTIFIED



HRO CERTIFIED



SRC
CERTIFIED

CODE: M810013/021 SIZES: UK 5 TO 14 EU 38 TO 48 WEIGHT: 0.810KG

SITEMASTER LOW

LEATHER COMPOSITE TOE COMPOSITE PLATE



- Durable full grain leather upper
- Scanner safe non-metallic composite hardware
- Fast wicking lining for moisture management & comfort
- Magnum Comfort Plus insole for maximum comfort & shock absorption
- Dual density PU outsole with ladder grips for grip and durability
- Tested & certified to: EN ISO 20345:2011 S3 WR SRC



WATER
RESISTANT



COMPOSITE
TOE + PLATE



SCANNER
SAFE



ANTI-STATIC



SLIP & OIL
RESISTANT



S3 CERTIFIED



SRC
CERTIFIED

CODE: M810030/021 SIZES: UK 3 TO 13 EU 35 TO 47 WEIGHT: 0.650KG

THE WORK COLLECTION

MAGNUM

SITEMASTER

NUBUCK COMPOSITE TOE COMPOSITE PLATE



- Durable nubuck upper
- Scanner safe non-metallic composite hardware
- Fast wicking lining for moisture management & comfort
- Magnum Comfort Plus insole for maximum comfort & shock absorption
- Dual density PU outsole with ladder grips for grip and durability
- Tested & certified to: EN ISO 20345:2011 S3 WR SRC



WATER
RESISTANT



COMPOSITE
TOE + PLATE



SCANNER
SAFE



ANTI-STATIC



SLIP & OIL
RESISTANT



S3 CERTIFIED



SRC
CERTIFIED

CODE: M801334/079 SIZES: UK 3 TO 13 EU 35 TO 47 WEIGHT: 0.740KG

SITEMASTER

LEATHER COMPOSITE TOE COMPOSITE PLATE



- Durable full grain leather upper
- Scanner safe non-metallic composite hardware
- Fast wicking lining for moisture management & comfort
- Magnum Comfort Plus insole for maximum comfort & shock absorption
- Dual density PU outsole with ladder grips for grip and durability
- Tested & certified to: EN ISO 20345:2011 S3 WR SRC



WATER
RESISTANT



COMPOSITE
TOE + PLATE



SCANNER
SAFE



ANTI-STATIC



SLIP & OIL
RESISTANT



S3 CERTIFIED



SRC
CERTIFIED

CODE: M801232/021 SIZES: UK 3 TO 13 EU 35 TO 47 WEIGHT: 0.740KG

THE WORK COLLECTION

MAGNUM

ACCESSORIES COLLECTION





MX-3 LIGHTWEIGHT SOCKS



- Composition: 36% Polyester (25% Coolmax, 11% polyester), 34% cotton, 28% Nylon, 2% Elasthan (Lycra)
- Size (M) EU39-42 UK6-8 and (L) EU43-46 UK9-12
-

COOLMAX[®]
ALL SEASON

CODE: M810011/021

MX-5 HEAVYWEIGHT SOCKS



- Composition: 52% Acrylic , 25% Nylon, 22% Merino Wool, 1% Elasthan (Lycra)
- Size (M) EU39-42 UK6-8 and (L) EU43-46 UK9-12



CODE: M810012/021



M-P.A.C.T INSOLE



- Soft upper layer conforms to the contours of your foot for increased comfort
- Lighter density bottom layer creates a cradle for your foot providing stability for the arch and heel
- Dual impact absorbing elastomer pads absorb shock under the heel and the forefoot with every step you take
- Plus a moisture-wicking footbed that incorporates arch ventilation for breathability and comfort

CODE: 56947

ONE-SIZE-FITS-ALL LACE



- 2 Semi-waxed laces
- Durable Paracord material with solid core
- Quality cotton/polyester blend
- Cut and seal ability to customise length
- Water resistant
- Stay tight weave

CODE: 21669

4MM FLAME RETARDANT LACES



- Nomex flame retardant laces
- 4mm wide round rope style

CODE: 195CM - M801471/021 205CM - M801472/021







Aviation Way • Southend on Sea • Essex • SS2 6GH
 Tel: +44 1702 541 741 • sales@magnumeurope.com
www.magnumboots.com/uk