

Traffic Management Procedures Gallions Reach Booking Facility



New Traffic Management Procedures

Construction of ExCeL London 's expansion project is currently underway. The project will deliver an additional 25,000m² of premium event space, seamlessly integrated into the existing venue once complete. To achieve a successful transformation, we are amending the way we operate the site during the build-up and break-down of shows.

From time to time, we will be required to stand-up our temporary Booking Facility located at Gallions Reach. At this temporary facility you will be guided by the ExCeL Traffic Team to a parking zone. From here, you'll attend the Traffic Management Office where you will be provided with your Lorryway Access Documentation to access the venue. Once you have collected your access documentation, please return to your vehicle and await instructions from the ExCeL Traffic Team, who will be in communication with the venue to provide a time slot for you to proceed to the Lorryway.

Where is it?



Located 2.1 miles from the venue, our Gallions Reach Booking Facility is easily accessible by road via the A13 and A406. From the A13 /A406 Beckton Roundabout, exit onto the A1020 Royal Docks Road, and proceed until the traffic light junction with Armada Way. At this junction, turn left onto Armada Way, and follow the road to remain on Armada Way until the third roundabout. Our booking facility is located at the first exit from this roundabout.

Routing to the Gallions Reach Booking Facility



Once you have arrived...

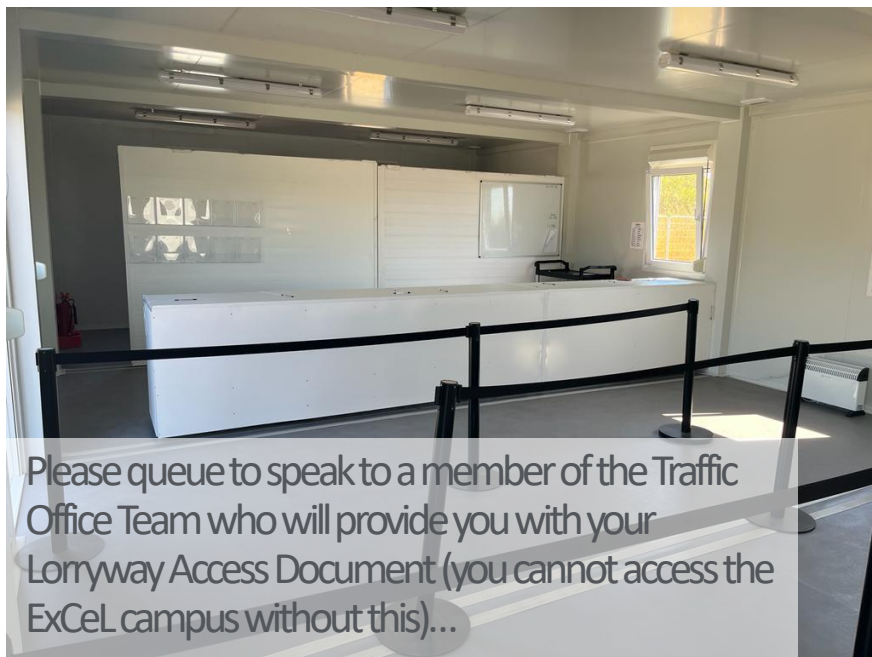


The ExCeL Traffic Team will direct you to the appropriate parking area...



...Once parked, please proceed to the Traffic Management Office.

Once you have arrived...



Please queue to speak to a member of the Traffic Office Team who will provide you with your Lorryway Access Document (you cannot access the ExCeL campus without this)...

NORTH LORRYWAY ACCESS DOCUMENT 143193

Date: 11/01/18
 Vehicle Size:
 Car: 12 17
 Van: 7.3 25 A

EXCEL LONDON

THIS IS NOT A PARKING PERMIT

Event/Stand No. *
 Drivers Name & Phone Number *
 Lorryway Linking Time & Staff Initials

Date: 11/01/18
 Event/Stand No. *
 Drivers Name & Phone Number *
 Vehicle Registration *

SOUTH LORRYWAY ACCESS DOCUMENT 155967

Date: 11/01/18
 Vehicle Size:
 Car: 12 17
 Van: 7.3 25 A

EXCEL LONDON Colour Zone:

THIS IS NOT A PARKING PERMIT

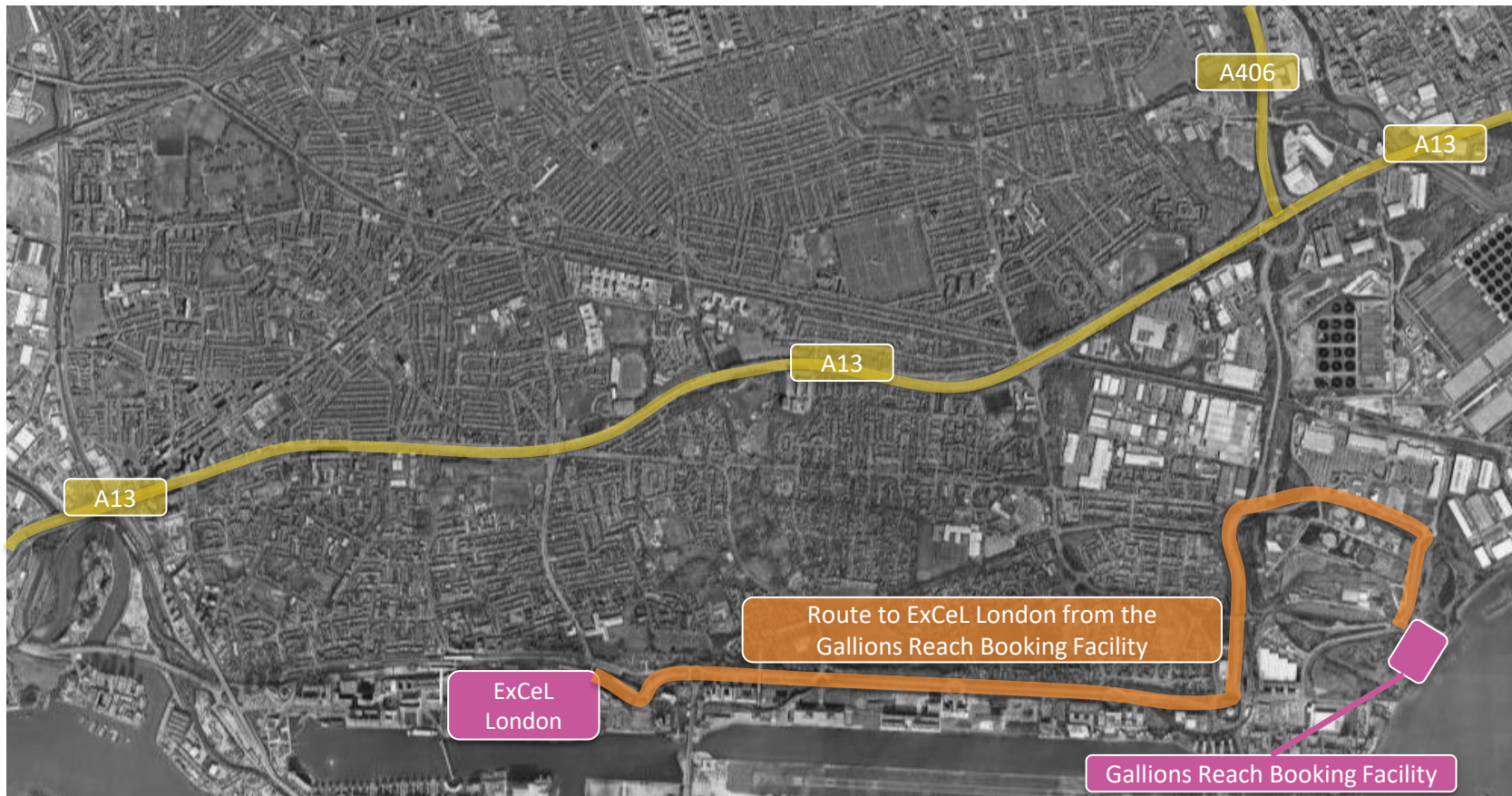
Event/Stand No. *
 Drivers Name & Phone Number *
 Lorryway Linking Time & Staff Initials

Date: 11/01/18
 Event/Stand No. *
 Drivers Name & Phone Number *
 Vehicle Registration *

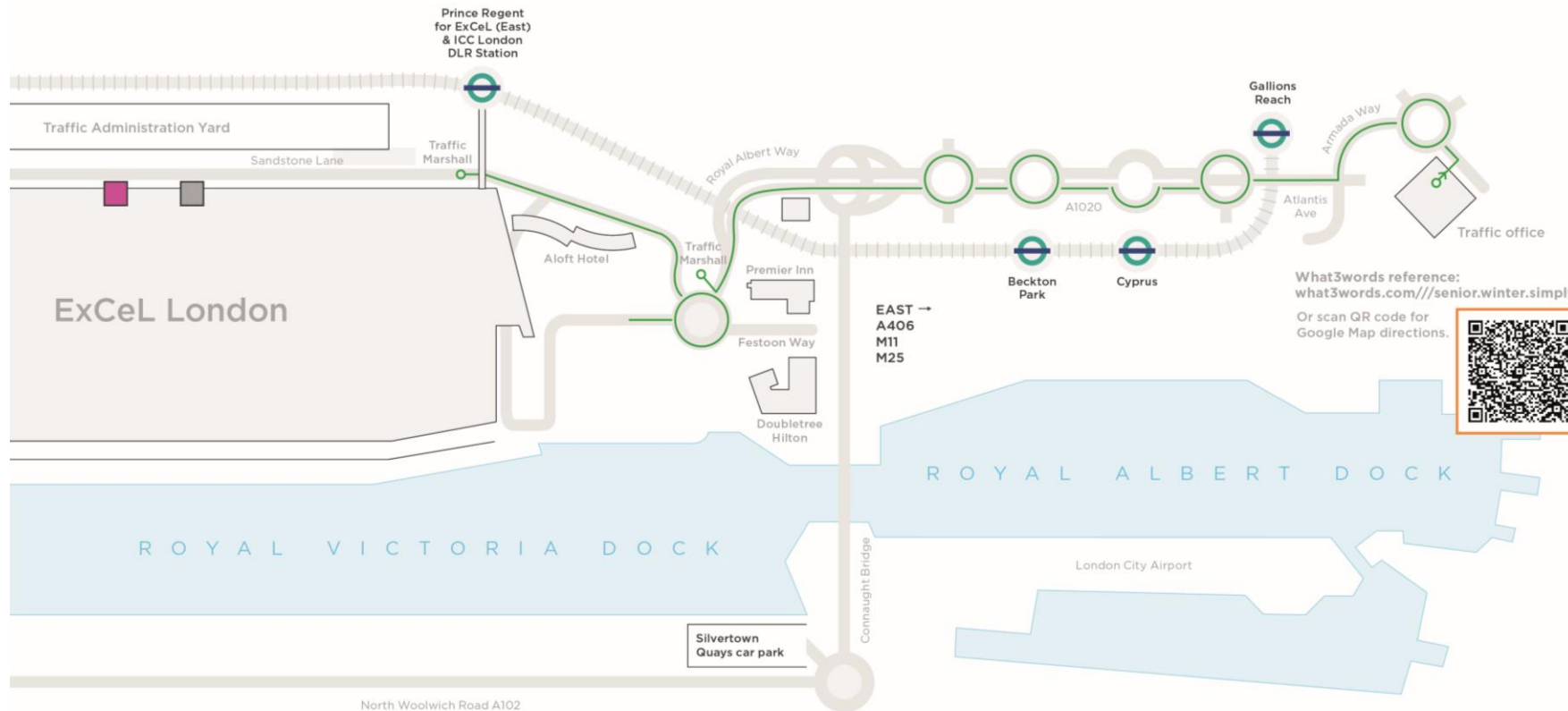
...Once you have been provided with your Lorryway Access Document, please exit the Traffic Office and speak to a member of the Traffic Team regarding your time slot to access the Lorryway.

Routing to the Venue from the Gallions Reach Booking Facility

EXCEL
LONDON



Routing to the Venue from the Gallions Reach Booking Facility



Arriving at ExCeL London...

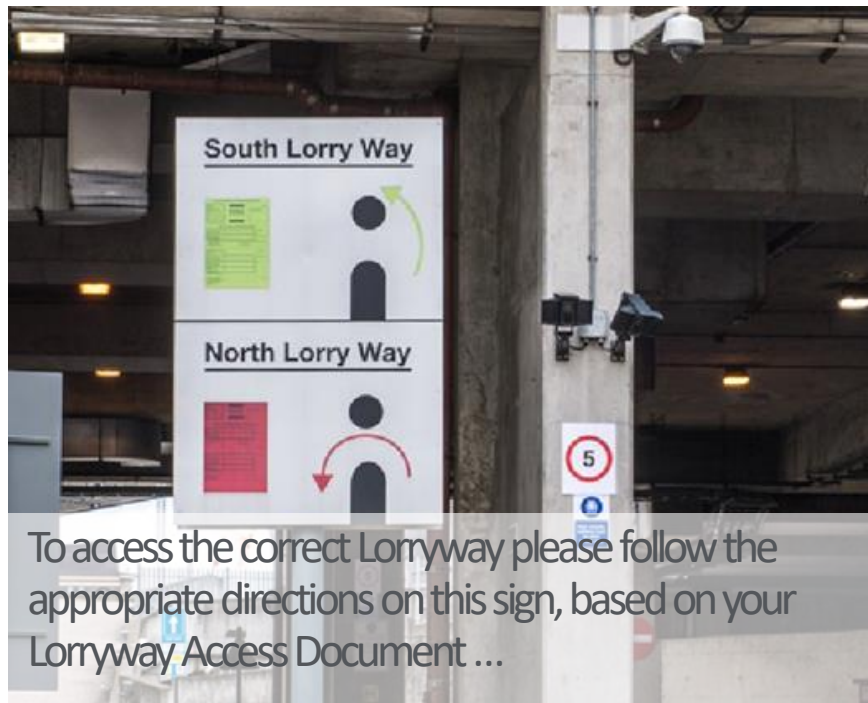


When you have arrived at the venue, please follow the direction of the ExCeL Traffic Team into the correct lane, determined by your Lorryway Access Document ...



...Once there is space on the Lorryway for your vehicle, you will be instructed to turn left from your lane and onto access ramps.

Arriving at ExCeL London...



To access the correct Lorryway please follow the appropriate directions on this sign, based on your Lorryway Access Document ...



... A member of the ExCeL Traffic Team will check your Lorryway Access Document and record your access time. Please then display your vehicle access document in your windshield .

Once on the Lorryway...

Time Restricted Lorryway

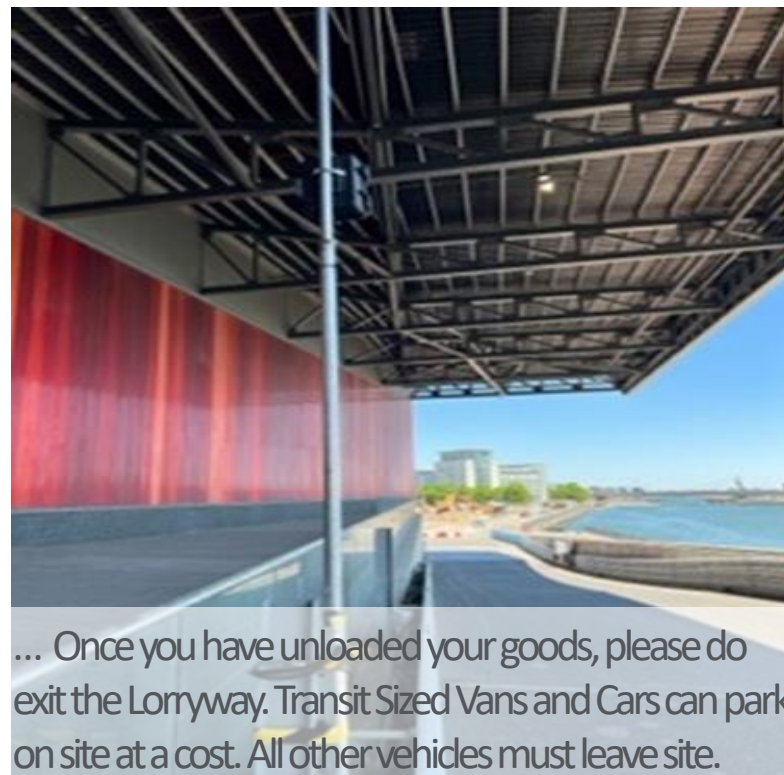
Cars	15 minutes
Transit/Luton	45 minutes
7.5 Tonne	60 minutes
18.5 Tonne - Artic	90 minutes

Disabled badges and regional concessions are not valid

The above times are **STRICTLY** for **LOADING / UNLOADING** only and should be adhered to. Failure to **REPORT** to a member of the **Traffic Team** prior to time expiry will result in a **Penalty Notice** being issued

Once your vehicle is loaded / unloaded it must be removed and parked in a designated area. **NO VEHICLES** must be carried out on **STANDS** or in the **HALLS** whilst vehicles remain on the Lorryway.

Please comply with the timings displayed for your vehicle, failure to do so will result in a financial penalty...



... Once you have unloaded your goods, please do exit the Lorryway. Transit Sized Vans and Cars can park on site at a cost. All other vehicles must leave site.