



Humanihut[®]
UNITED KINGDOM

Defence.



Humanihut UK Ltd manufactures, supplies, and delivers scalable, multi-use structures, suitable for built-up, isolated, and remote environments.



**GOOD
DESIGN
AWARD**
BEST IN CLASS

DISRUPT 100



**DESIGN
FOR EXPORT
AWARDS**



**GOOD
DESIGN
AWARD**[®]
WINNER

The System.

Innovative in its patented design and engineering, the multi awarding winning Humanihut Field Infrastructure System (HFIS) offers climate controlled, foldable, rigid structures, with intergrated modules and ablutions, suitable for a few to thousands.

Capable of multiple deployments over its 20+ year lifespan, and with all components, accessories and necessary utilities integrated for rapid deployment and ease of establishment, the HFIS can connect to local mains water, power, and waste-water infrastructure or operate off-grid if services are not available.

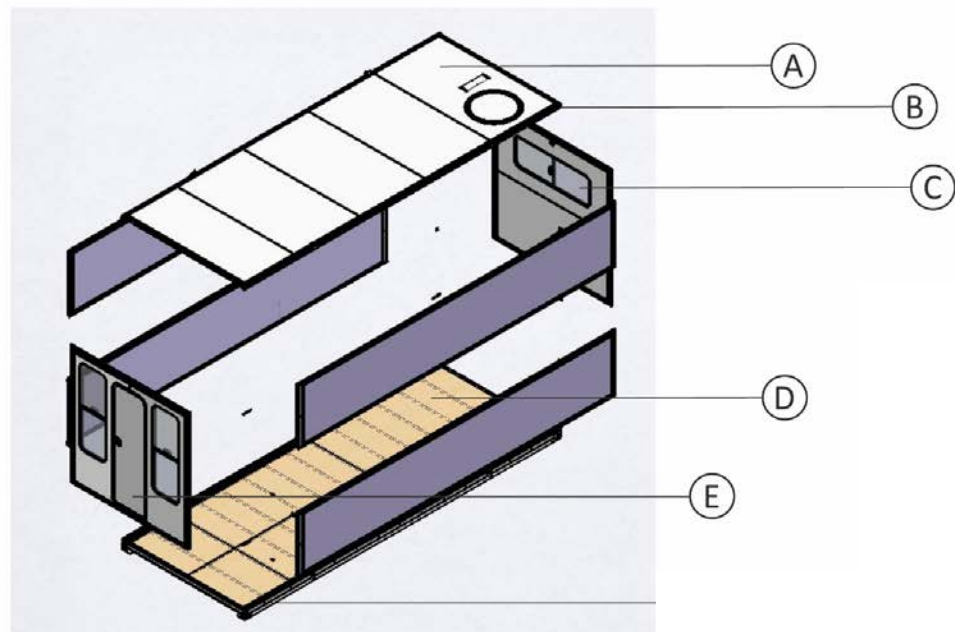
The Humanihut Field Infrastructure System is modular and scalable, and has the agility and adaptability to be configured to suit any client requirement.

This booklet contains a small sample of potential examples, which are interchangeable across all sectors.



The Hut.

The Hut is manufactured from insulated, rigid, lightweight steel materials. Our roof and wall panels are corrosion-resistant and flame retardant insulated structural panels with a UV stabilised Colorbond coating.



Materials

| Item | Component | Material |
|------|---------------------|--------------------------------------------------------------------------------------|
| A | Roof and wall panel | Lightweight, corrosion-resistant, flame retardant, insulated, structural steel panel |
| B | Roof and wall frame | Aluminium extrusion |
| C | Window | Aluminium frame, double-glazed safety glass |
| D | Flooring | Shipping container grade plywood |
| E | Door | Aluminium frame and insulated panel |
| F | Base Frame | SPA-H grade corrosion resistant steel |

The Hut Exterior.

The Hut is a foldable, rigid-wall, insulated and climate-controlled structure which can withstand the harshest of climatic conditions, providing safety, comfort, and security for occupants.



Facts 6m Hut

| | |
|---------------------|----------------------|
| Floor area | 12.55 m |
| External dimensions | 5.84 x 2.28 x 2.38 m |
| Tare weight | 1,000 kg |

Standard Features

| |
|--------------------------------|
| Power, water & waste fittings |
| Reverse cycle air conditioning |
| Double glazed windows |

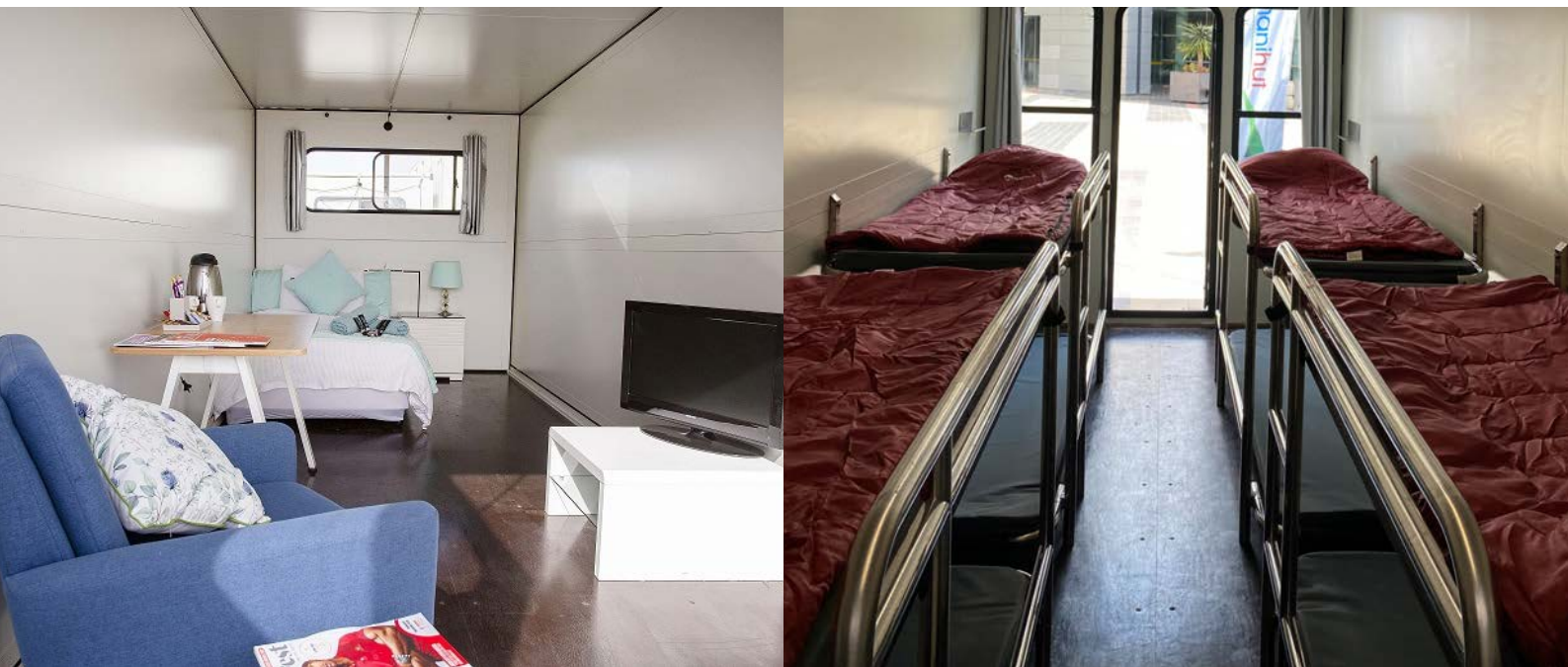
Options

| |
|-----------------------------|
| Accommodation |
| Washroom |
| Community spaces |
| Disabled access |
| Wi-Fi |
| Power, water & waste supply |

The Hut Interior.

The Hut interior allows for customisable furniture and fitout including:

- Bunk bed sleeping accommodation for emergency services / defence personnel
- Guest accommodation
- Command Centre
- Office
- Warehousing and Storage



With a choice of floor coverings which are both hard-wearing and safe, each Hut comes with shelving for personal effects, and air-conditioning for climate-controlled comfort.

Facts 6m Hut

| | |
|---------------------|----------------------------|
| Floor area | 12.55 m ² |
| External dimensions | 5.84 x 2.28 x 2.38 m |
| Tare weight | 1,000 kg |

Standard Features

| |
|--------------------------------|
| Power, water & waste fittings |
| Reverse cycle air conditioning |
| Double glazed windows |
| Magnetic shelving |
| Curtain & privacy screens |

Options

| |
|-----------------------------|
| Accommodation |
| Washroom |
| Community spaces |
| Disabled access |
| Wi-Fi |
| Power, water & waste supply |

The Bathroom.

The Bathroom is the customised shipping container which transports the Huts to site.

Once emptied, the container is converted to a 4 cubical common bathroom facility for hand-washing, shower, and/or toilet facilities.



Facts

| | |
|---------------------|-------------------|
| Floor area | 14.2 m2 |
| Internal dimensions | 5.9 x 2.4 x 2.8 m |
| Container | 20' |

Standard Features

| |
|-------------------------------|
| Power, water & waste fittings |
| Washroom |
| Showers |

Options

| |
|------------------------------------------------------------------------------------|
| Reverse cycle airconditioning |
| Disabled access |
| Laundry facilities |
| Power, water & waste supply |
| <u>40' container</u> Floor area 29 m2 Internal dimensions 12.9 x 2.4 x 2.8 m |

The Ensuite is a customised module designed to integrate with the Humanihut Field Infrastructure System. Ensuites are securely connected to established Huts, providing superior, convenient, private bathroom amenities.

Facts

- **Internal Dimensions:** 1.25 x 2.1 x 2.29 m
- **Establishment:** Plug and play quick connect fittings
- **Effluent Management:** Built-in macerator pump for minimal environmental impact
- **Exhaust Fan:** Auto shutting with insect-guard
- **Window and Insect Screen:** Aluminium frame, opaque glass for privacy and insect screen
- **Time to Establish:** < 15 minutes



Standard Features

Power, water & waste fittings

Wash basin & vanity

Shower

Toilet



The Storage Locker.

The Storage Locker is a compact, rigid, folding-wall structure that provides short to long term protection for dry goods and equipment. A loaded Storage Locker will fit into a standard 20' shipping container, and can be delivered by land, air, rail, or sea directly to the required location worldwide.



Facts

| | |
|-------------------------|--------------------|
| Internal dimensions | 5.7 x 2.2 x 2.2 m2 |
| Maximum load | 3,500 kg |
| Huts folder / container | 8 / 20' |

Standard Features

| |
|--------------------------------|
| Power, water & waste fittings |
| Reverse cycle air conditioning |
| Double doors |
| Security locks |
| Insulated walls |
| Wheelchair / gurney access |

Options

| |
|-----------------------------|
| Refridgeration |
| With or without windows |
| Power, water & waste supply |

Defence: The Cooper.

The Cooper is a small and agile, logistically efficient and rapidly re-deployable shelter system providing self-sufficiency for a maximum 6 defence/military personnel for up to 7 days. Able to withstand the harshest of climatic conditions, The Cooper consists of three climate-controlled Huts offering UV protection, thermal insulation, and double-glazed windows.



Capable of multiple deployments over its 20+ year lifespan, The Cooper comes complete with bathroom facilities, power generation, water and waste storage as standard.

With all components, accessories and utilities secured to a "life-support skid," The Cooper, is an unique, independent temporary infrastructure solution.

Facts

| | |
|------------------------|-------------------|
| Accommodation | 1-4 per Hut |
| Office / meeting space | 1-4 per Hut |
| Container | 1 x 20' Container |
| Time to establish | < 1/2 day |
| Dimensions | 12 x 8 = 96 m2 |

Standard Features

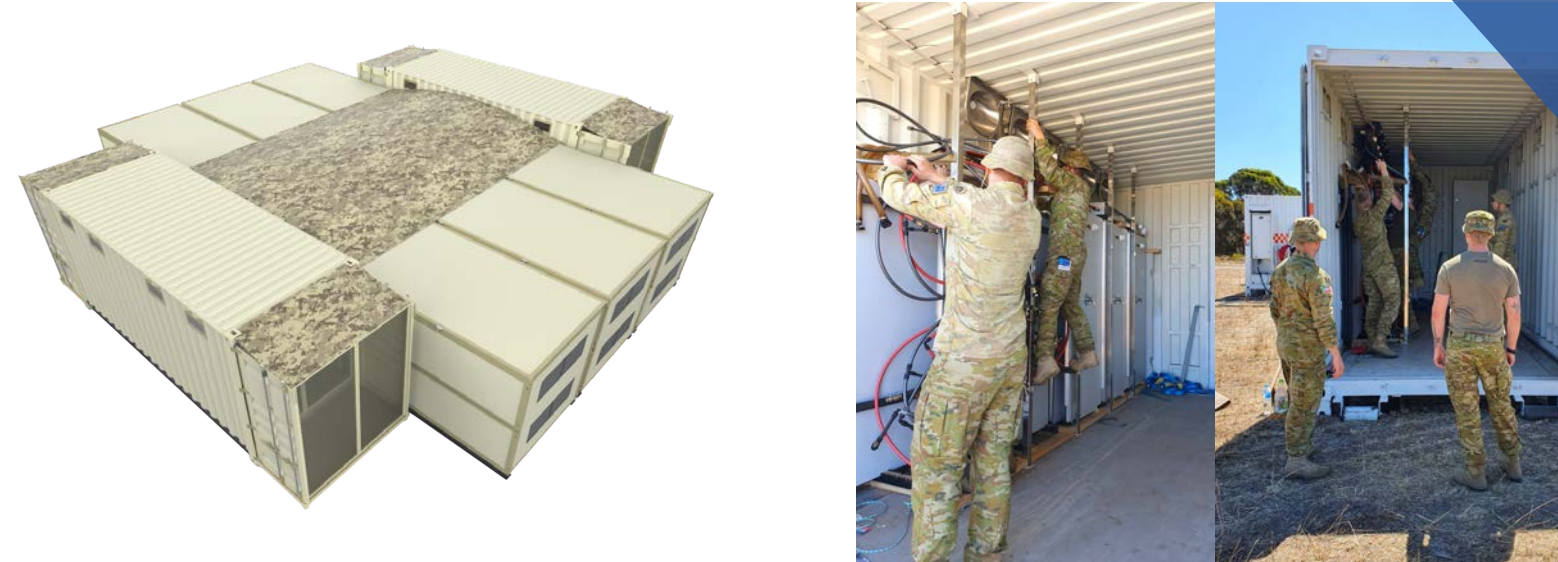
| |
|----------------------------------------|
| 3 x 6m Huts |
| 1 x Bathroom |
| 1 x Life support skid |
| Reverse cycle airconditioning |
| Power, water & waste fittings & supply |

Options

| |
|-------------|
| Furnishings |
| Utilities |
| Wi-Fi |

Defence: The Forward Operating Base.

Consisting of up to 8 Huts, The Forward Operating Base is a fully integrated, rapidly re-deployable communications and accommodation system providing a short-term, front-line operations base for up to 24 defence/military personnel.



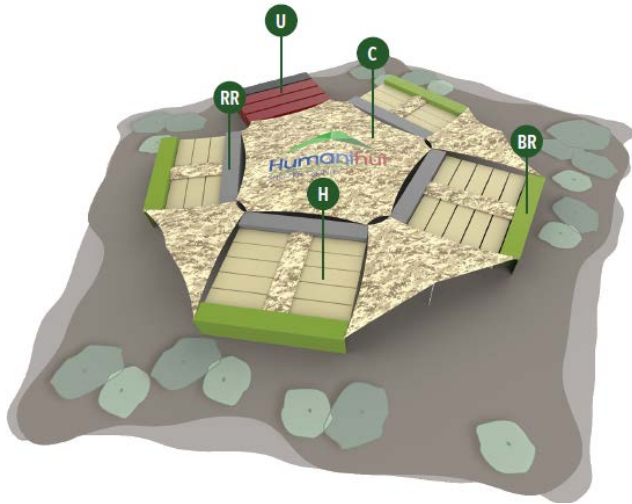
Capable of multiple deployments over its 20+ year lifespan, and with all components, accessories and necessary utilities integrated for rapid deployment and ease of establishment, the Humanihut Field Infrastructure System can connect to local mains water, power, and waste-water infrastructure or run independently if services are not available.

The Humanihut Field Infrastructure System is modular and scalable, and has the agility and adaptability to be configured to suit any client requirement.

| Facts | | Standard Features | Options |
|------------------------|-------------------|-------------------------------|-----------------------------|
| Accommodation | 1-8 per Hut | 6 x 6m Huts | Kitchenette |
| Office / meeting space | 1-4 per Hut | 2 x 20' Containers | Region specific camouflage |
| Container | 2x 20' Containers | Bathroom | Utilities |
| Time to establish | < 1/2 day | Reverse cycle airconditioning | Emergency utilities |
| Dimensions | 13 x 12 = 156 m2 | Power, water & waste fittings | Wi-Fi |
| | | | Communications |
| | | | Power, water & waste supply |

Defence: The Gathering.

Consisting of 26 Huts, The Gathering is a fully integrated, rapidly re-deployable and scalable, field accommodation and command centre solution providing a short-term, front-line operations base for up to 104 defence/military personnel.



Capable of multiple deployments over its 20+ year lifespan, and with all components, accessories and necessary utilities integrated for rapid deployment and ease of establishment, the Humanihut Field Infrastructure System can connect to local mains water, power, and waste-water infrastructure or run independently if services are not available.

The Humanihut Field Infrastructure System is modular and scalable, and has the agility and adaptability to be configured to suit any client requirement.

Facts

| | |
|------------------------|---------------------------------|
| Accommodation | 1-8 per Hut |
| Office / meeting space | 1-4 per Hut |
| Container | 8 x 40' Configurable containers |
| Time to establish | < 1/2 day |
| Dimensions | 13 x 12 = 156 m ² |

Standard Features

| |
|-------------------------------|
| 26 x 6m Huts |
| 2 x 20' Containers |
| BR: 6 Bathrooms |
| RR: 6 Recreation / mess |
| C: Canopies |
| Power, water & waste fittings |
| Reverse cycle airconditioning |

Options

| |
|-----------------------------|
| Kitchenette |
| Region specific camouflage |
| U: Utilities |
| Emergency utilities |
| Wi-Fi |
| Communications |
| Power, water & waste supply |

Defence: The Barracks.

The Barracks provides short to medium-term accommodation for defence personnel in a range of uses such as operational deployments, large exercises, and HADR (Humanitarian Assistance & Disaster Relief).

The Barracks is a rapidly re-deployable, scalable accommodation solution that can accommodate up to 192 people. It has integrated ablutions with "click and connect" power, water and sewerage connectivity creating an internal grid. The Barracks configuration consists of 7 Standard Height containers that are air-portable in C-130 aircraft.



Capable of multiple deployments over its 20+ year lifespan, and with all components, accessories and necessary utilities integrated for rapid deployment and ease of establishment, the Humanihut Field Infrastructure System can connect to local mains water, power, and waste-water infrastructure or run independently if services are not available.

The Humanihut Field Infrastructure System is modular and scalable, and has the agility and adaptability to be configured to suit any client requirement.

Facts

| | |
|------------------------|--------------------------------|
| Accommodation | 1-8 per Hut |
| Office / meeting space | 1-4 per Hut |
| Container | 7 x 20' containers |
| Time to establish | < 1 day |
| Dimensions | 46 x 16.5 = 759 m ² |

Standard Features

| |
|-------------------------------|
| 24 x 6m Huts |
| 7 x 20' Containers |
| 6 x Customisable bathrooms |
| 1 x Storage locker container |
| Power, water & waste fittings |
| Reverse cycle airconditioning |

Options

| |
|-----------------------------|
| Accommodation |
| Recreation / mess |
| Region specific camouflage |
| Canopies |
| Office |
| Storage |
| Wi-Fi |
| Power, water & waste supply |

Rental Solutions.

Humanihut offers multiple rental solutions for the Humanihut Field Infrastructure System, with optional customised fit-outs and configurations.

Fixed-Term Rental Agreement:
the ideal solution when multiple, medium-term deployments will be required over a period of several years. This could include seasonal work, construction, mining, and defence deployments and activities.

Periodic Rental Agreement:
suitable for occasional, short-term deployments such as events and festivals, and short-term accommodation supplementation.

Emergency Response Agreement:
an immediate, one-off deployment in response to a major large-scale event.



A turn-key site management solution.

Humanihut Logistics offers a complete turnkey site management solution for your established site, temporary accommodation facility (with or without supplied infrastructure), offices or onsite warehousing.

Our highly skilled and experienced team has the capability to ensure your daily site operations are seamlessly and professionally managed while ensuring the safety, comfort and wellbeing of occupants and staff.

Humanihut Logistics offers customised site management solutions including:

- Dedicated 24/7 Onsite Managers
- Full catering including specific and cultural dietary requirements
- Linen service
- Interpreting services
- Medical/health support including COVID-19 management
- Customised onsite activities
- Perimetre fencing
- Maintenance management
- On-site security

