

REP KON

..setting flowforming 'free'.

DEFENCE & AEROSPACE

**Gun Barrels | Rocket Motor Cases |
Drive Shafts | WarHeads | Cartridge Cases |
Drag Bomb Cases | Diffisors Cones & Nozzles |
Aero&Hydraulic Cylinders**



Repkon



repkon_inc



repkon.inc



repkon

REP KON

..setting flowforming 'free'.

SERIAL PRODUCTION

GUN BARRELS

- 5,56 mm, 7,62 mm, 9 mm caliber pistol barrels
- 12.7 mm caliber anti-aircraft machine gun barrels
- 40 mm caliber grenade launcher barrels
- Rifled barrels

ROCKET MOTOR CASES

- 70mm / 122mm / 230mm / 610 mm /

DRIVE SHAFTS - JET ENGINE SHAFTS

HELICOPTER SHAFTS

WARHEADS

From 105 mm up to 155 mm

CARTRIDGE CASES

From 105 mm up to 155 mm

DRAG BOMBS CASES

MK 81, 82, 83 and 84



Repkon



repkon_inc



repkon.inc



repkon



REP KON

..setting flowforming 'free'.



40 MM CALIBER GRENADE LAUNCHER BARRELS



Gun Barrel Production Improved Target Stability And Extended Life
Cycle Repkon Patented Free Flowforming Technology



Repkon



repkon_inc



repkon.inc



repkon

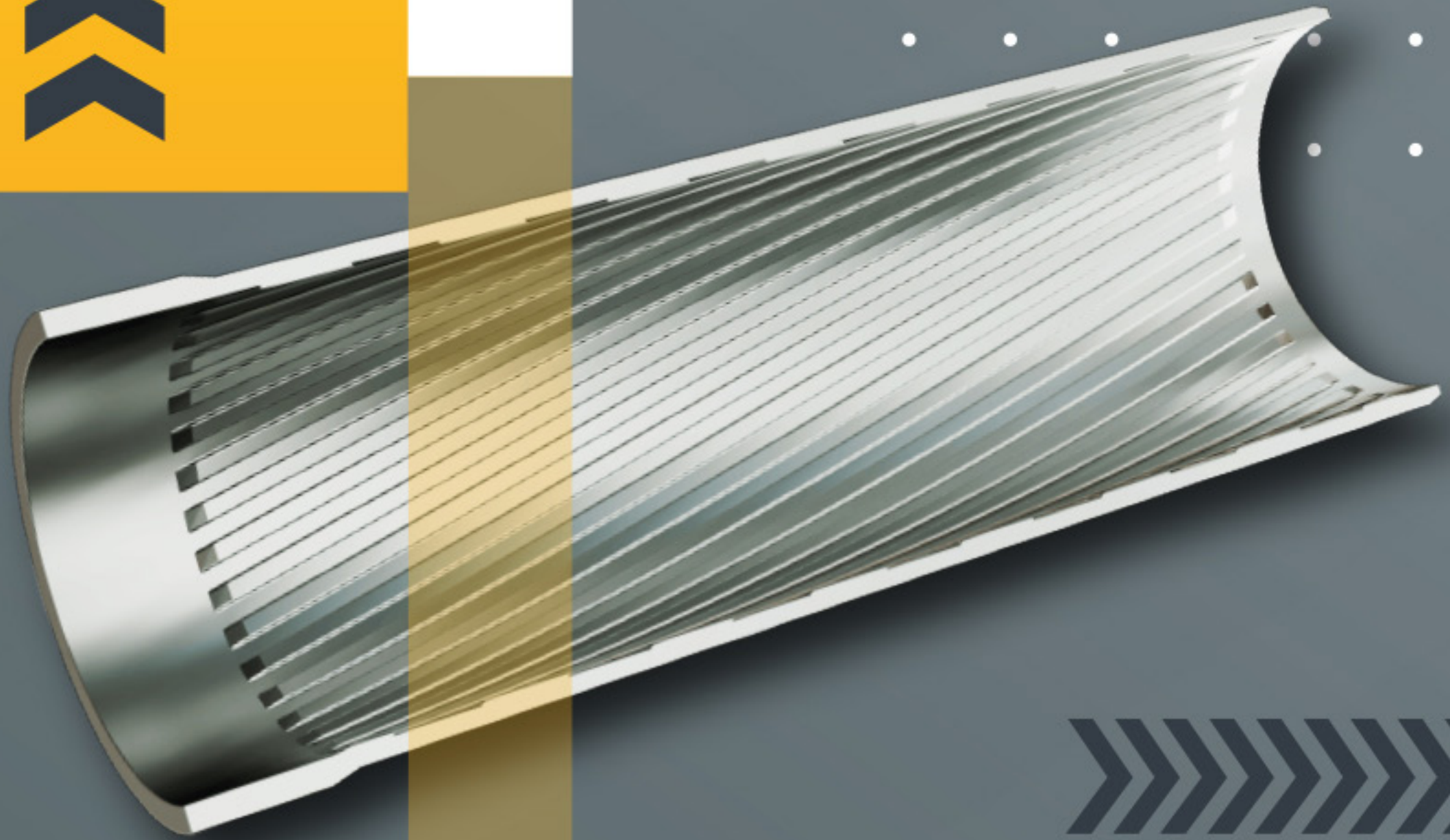


REP KON

..setting flowforming 'free'.



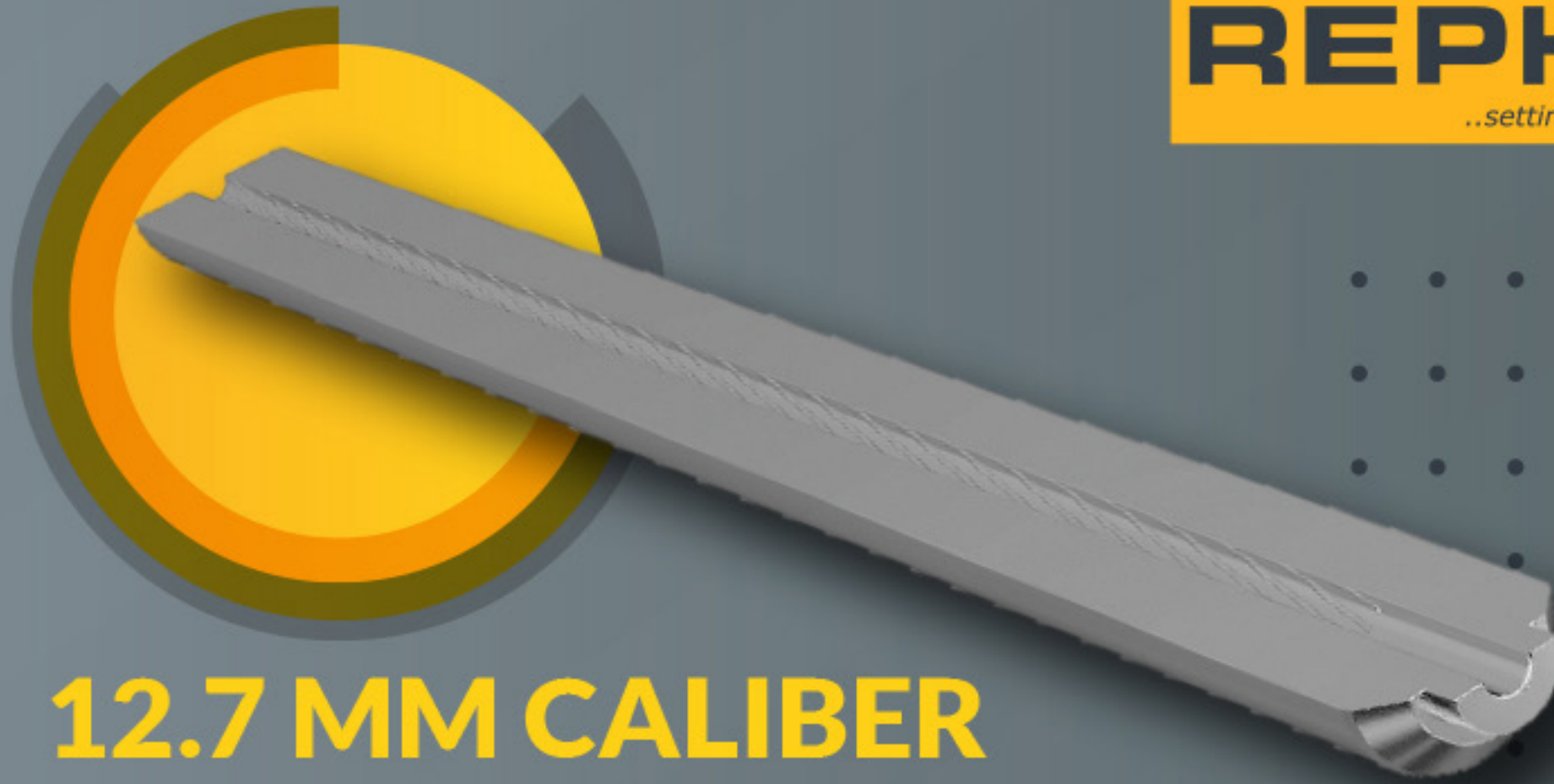
Artillery barrels Mortar Barrels **RIFLED BARREL**



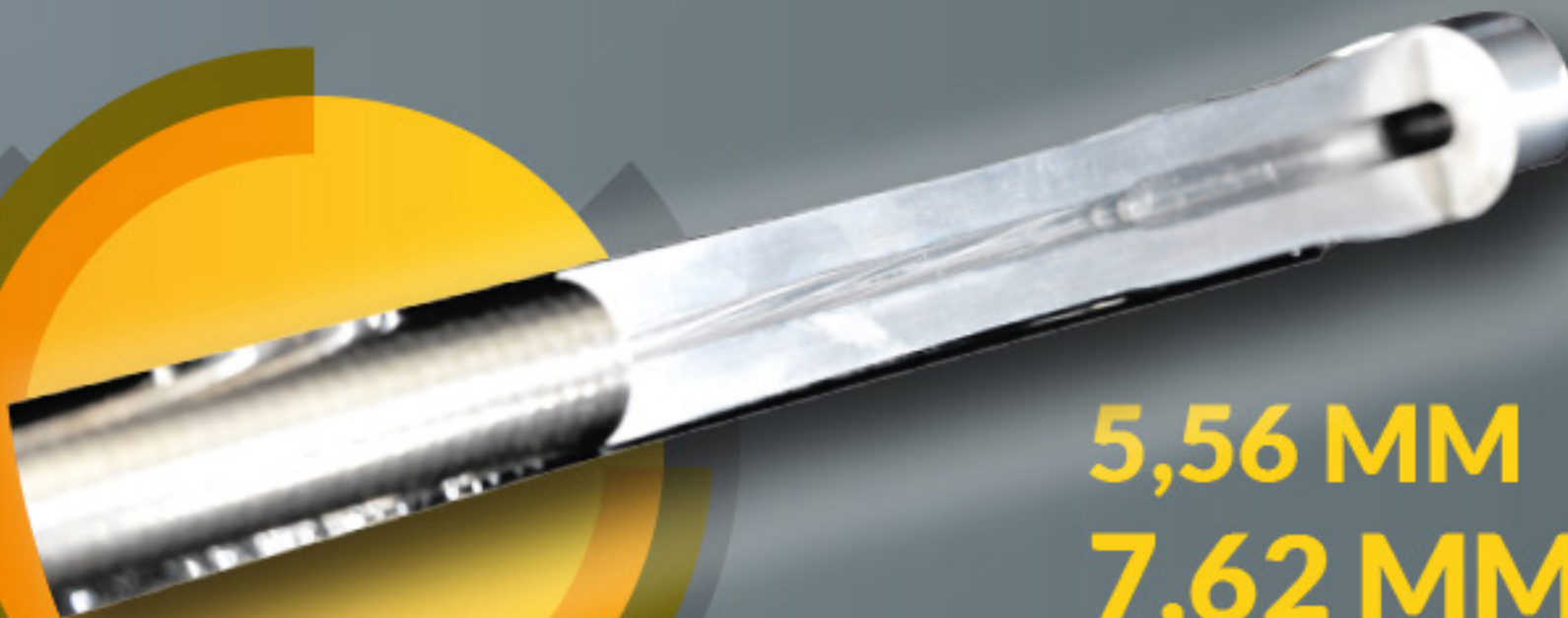
It's now possible to produce chip-less and cost-effective high precision gunbarrels with Repkon patented "free flowforming" technology.

REP KON

..setting flowforming 'free'.



12.7 MM CALIBER ANTI-AIRCRAFT MACHINE GUN BARRELS



5,56 MM 7,62 MM 9 MM CALIBER PISTOL BARRELS

Barrels with rifling and optional
chamber produced in single pass operation

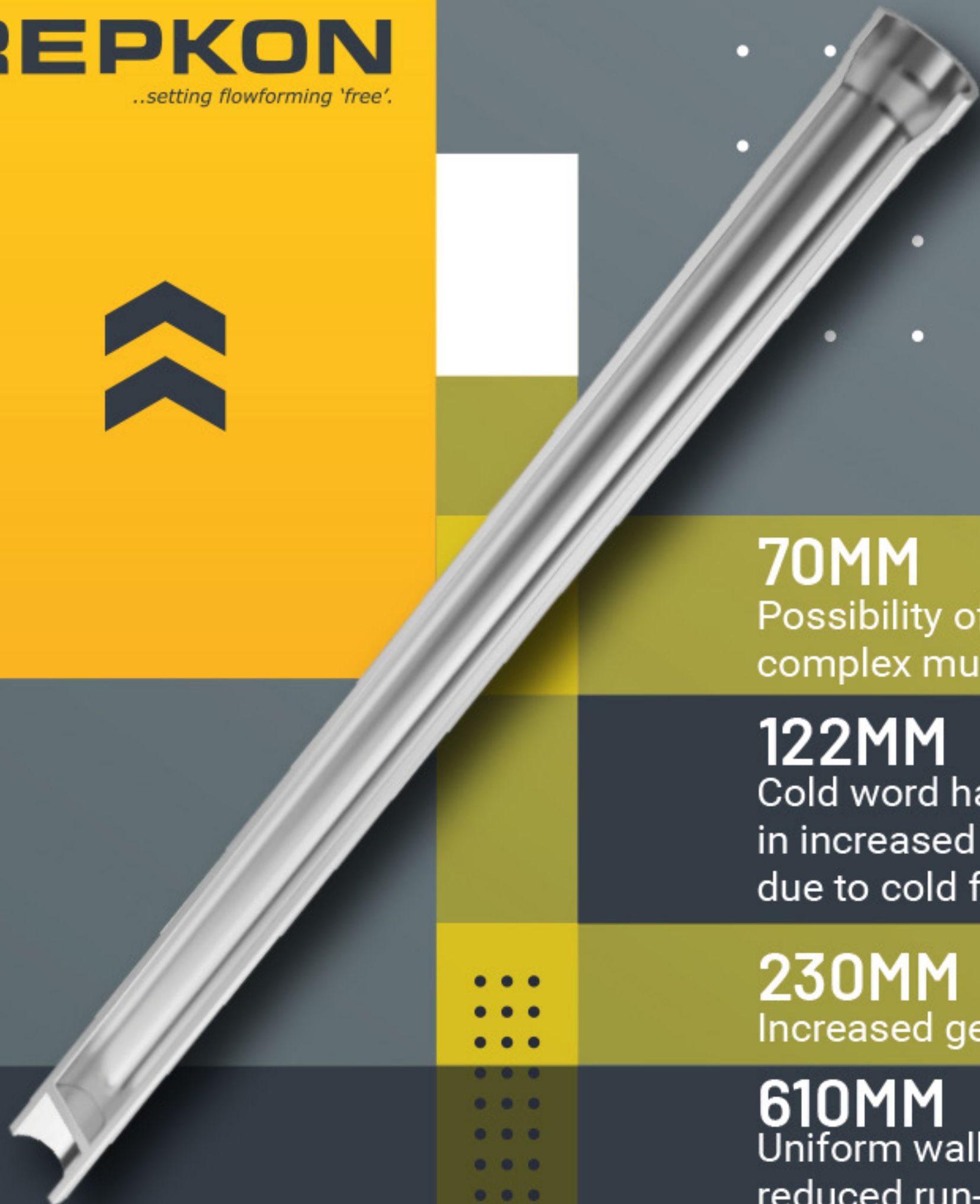


REP KON

..setting flowforming 'free'.



ROCKET MOTOR CASES



70MM

Possibility of producing complex multi internal contours

122MM

Cold work hardening effect resulting in increased material tensile strength due to cold forming of the material

230MM

Increased geometrical tolerances

610MM

Uniform wall thickness with reduced run-out



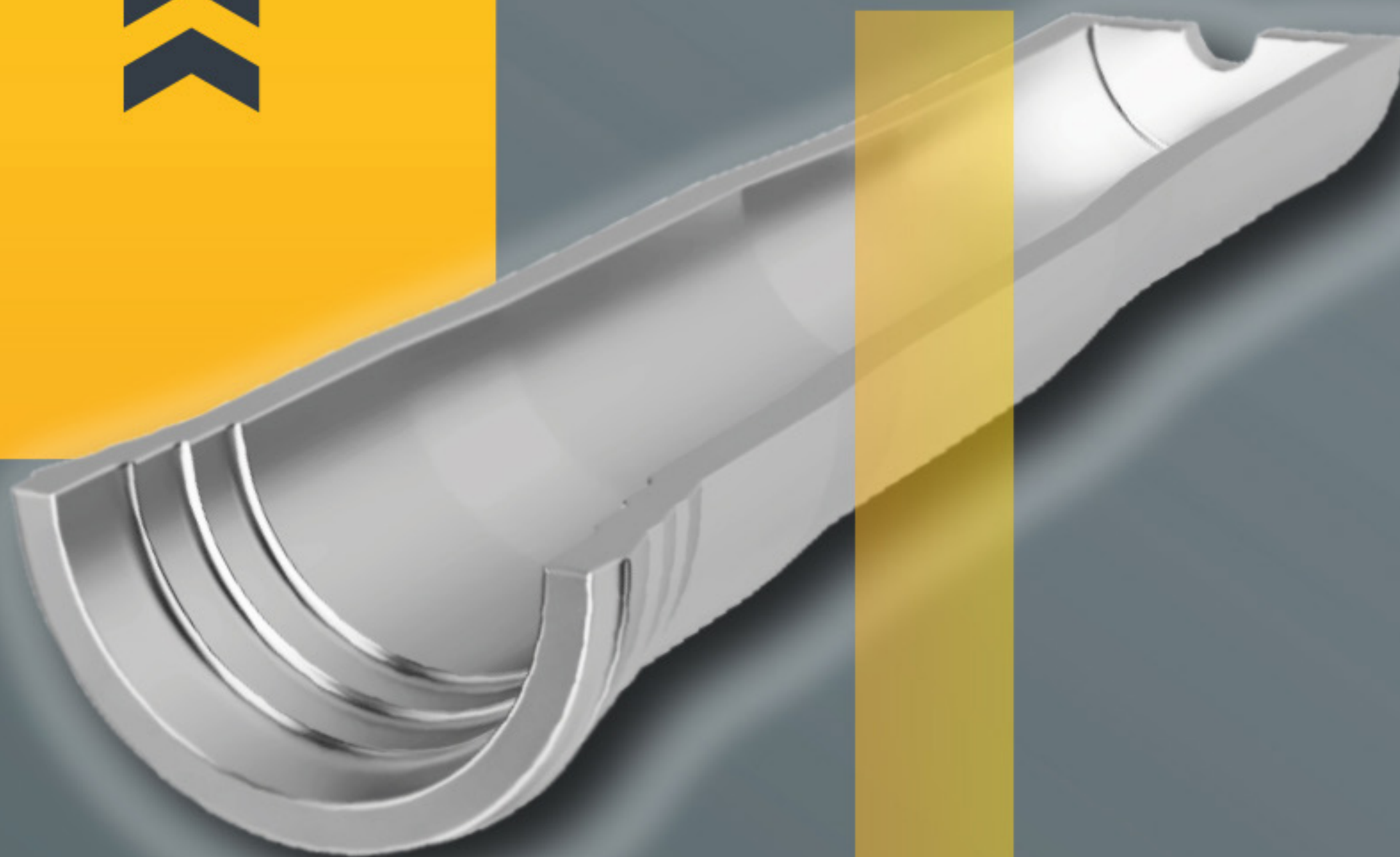


REPKON

..setting flowforming 'free'.



AIR DEFENCE SYSTEM MOTOR CASES



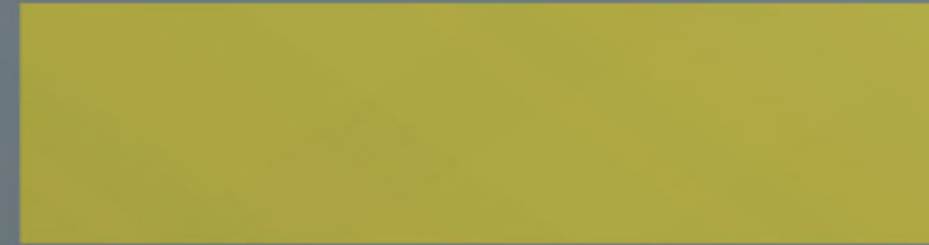
REP KON

..setting flowforming 'free'.

HELICOPTER SHAFT



WARHEAD



Repkon



repkon_inc



repkon.inc



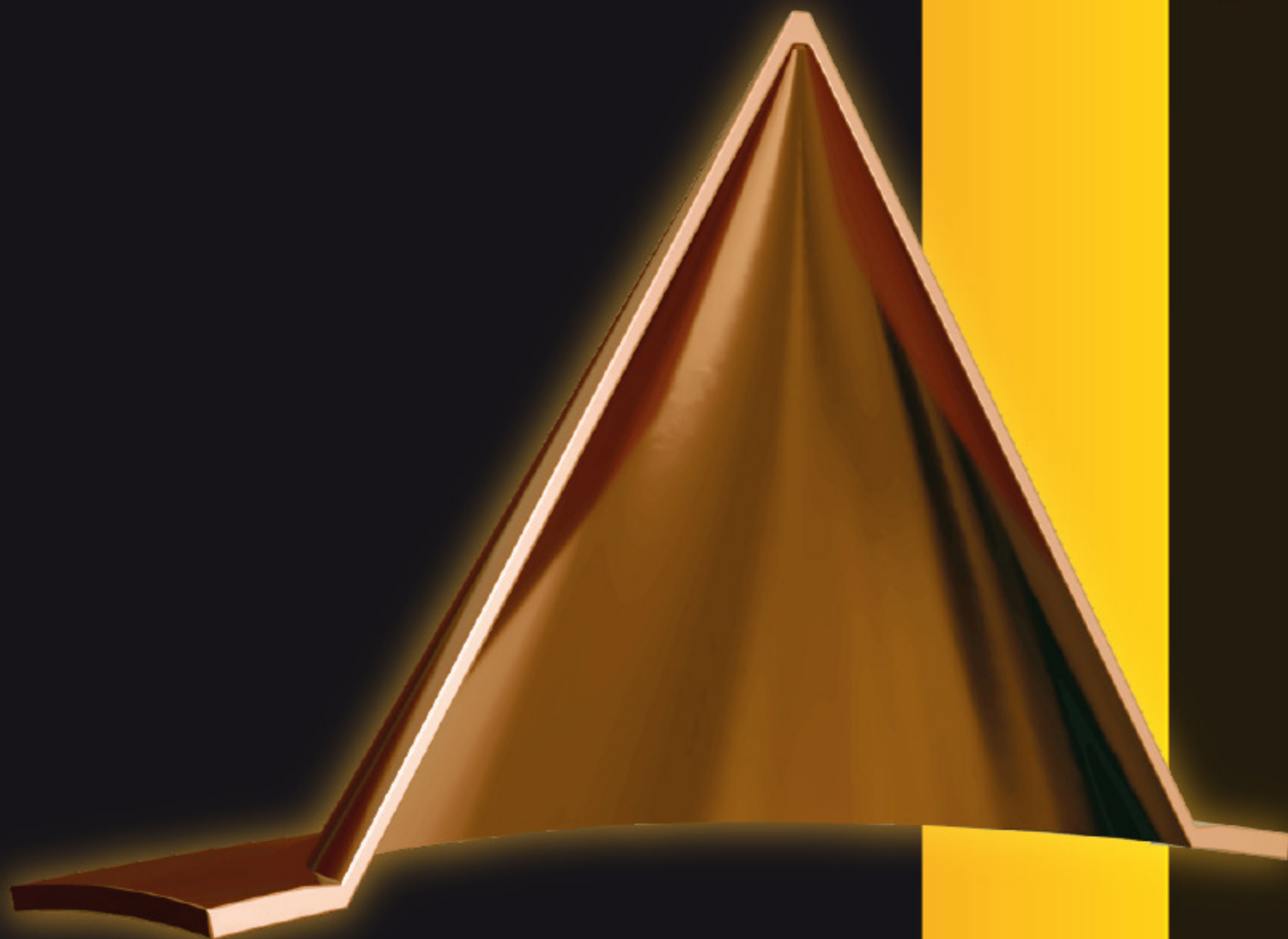
repkon

REP KON

..setting flowforming 'free'.

SHEARFORMING
MACHINE 

COPPER CONE





REP K O N

..setting flowforming 'free'.



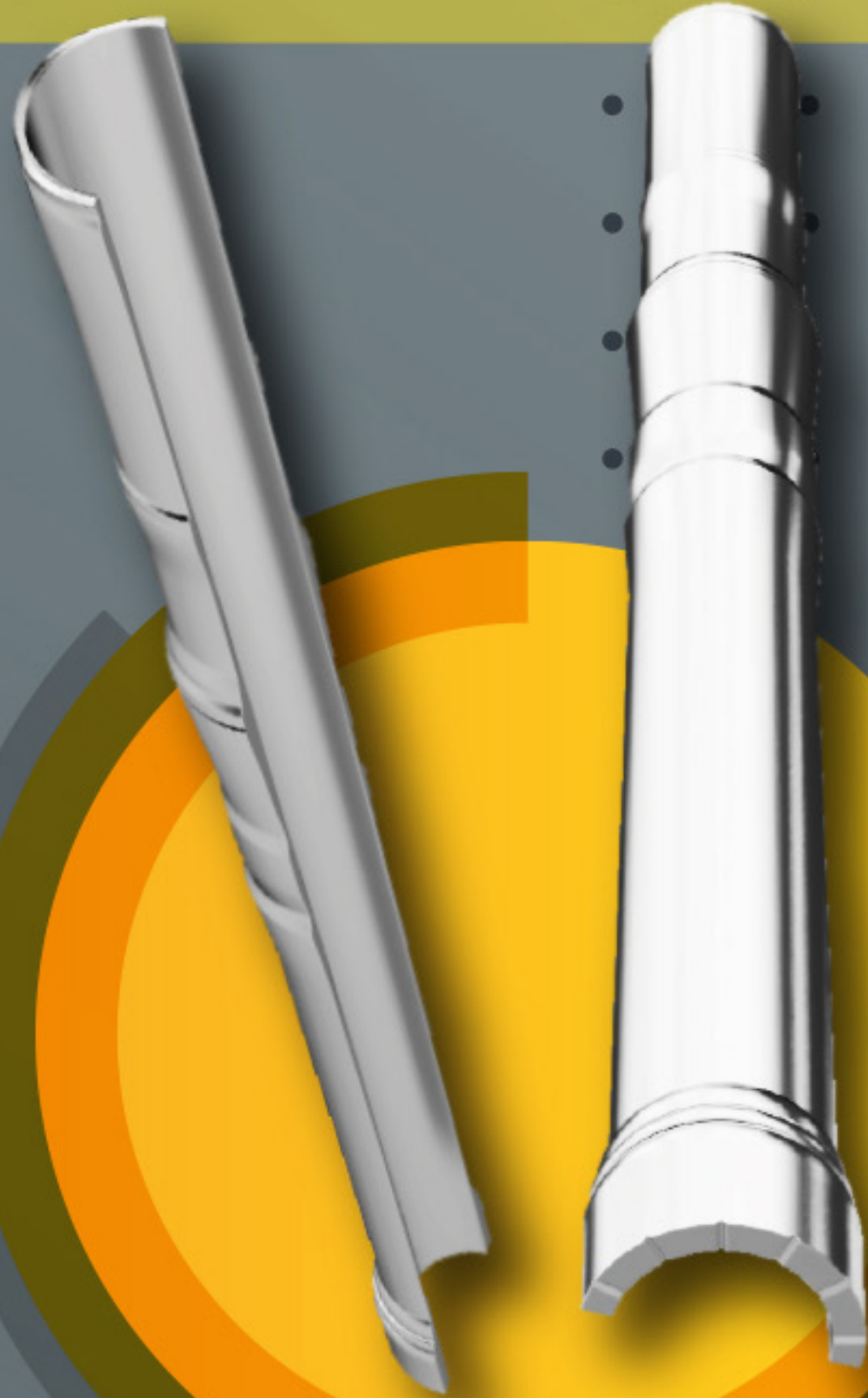
FLOWFORMED INNER SPLINED TUBE



REP KON

..setting flowforming 'free'.

FLOWFORMED SHAFT & TUBE



Repkon



repkon_inc



repkon.inc



repkon

REP KON

..setting flowforming 'free'.

CORE MANDREL

**FLOWFORMED
TUBE**



Repkon



repkon_inc



repkon.inc



repkon

REP KON

..setting flowforming 'free'.



DEFENCE & AEROSPACE

THANK YOU !



+90 850 325 77 77



repkon@repkon.com.tr



www.repkon.com.tr



Balibey Mahallesi, Fabrika Sokak
No: 1, 34980 Şile, İstanbul, TÜRKİYE



Repkon



repkon_inc



repkon.inc



repkon