


**Evolve Dynamics** innovation leading, best-in-class product range is driven by our core value of affecting real world change through customer demand and requirements through cutting edge technical solutions. We excel at converting customers' needs and problems into highly effective holistic solutions by creating mission-specific systems that integrate into existing infrastructure and workflows.

**Evolve Dynamics** provides a comprehensive ISTAR, EW, C-EW and RF capability suite of aircraft and software systems that easily integrates into the C6ISR (and lower) frameworks and other workflows.


**Evolve Dynamics** is proud to be a UK MoD audited and approved supplier with systems in operational service around the world.

+44 (0) 1483 575575  
[contact@evolvedynamics.com](mailto:contact@evolvedynamics.com)

[www.evolvedynamics.com](http://www.evolvedynamics.com)

 [EvolveDynamicsUAV](https://www.facebook.com/evolvedynamicsuav)

 [@evolve\\_dynamics](https://twitter.com/evolve_dynamics)

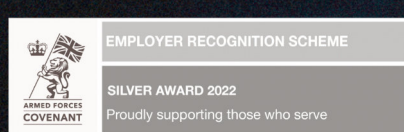
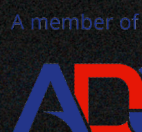
 [evolve-dynamics-uav](https://www.linkedin.com/company/evolve-dynamics-uav)

# EVOLVE

D Y N A M I C S



## UAV AIRCRAFT, SYSTEMS & SOFTWARE SOLUTIONS



[WWW.EVOLVEDYNAMICS.COM](http://WWW.EVOLVEDYNAMICS.COM)





# SKY MANTIS™



**Up to 1 Hour**  
Flight Time



**Best-in-class weather resistance -**  
46mph Wind and Heavy Rain



**Rapid Deployment -**  
Bag-to-Air in 1 min



**Modular & Customizable Payloads -**  
30x Zoom Daylight EO & 640x512 Thermal



**Man-Transportable**  
in Supplied Backpack



**Bespoke & Robust IP65 Ground Control Station** with multiple I/O Ports



**MESH Capable Radios**  
Compatible with Customer Systems



**MANET / Mesh radio**  
Vendor agnostic (MPU5, MH, Silvus, DTC, etc)



**Secure & Encrypted**  
comms link



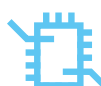
**Simple & Intuitive Software inc.**  
Motion Detection & Target Tracking



**Fully Compatible**  
with Infinity Tether & Field-to-Cloud



**Littoral Version**  
Available



**APIs available**  
for bespoke requirements



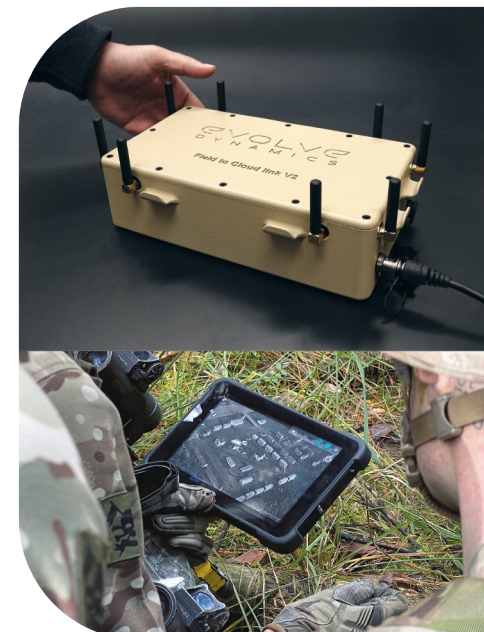
**EW / C-EW**  
Payloads



## INFINITY TETHER™

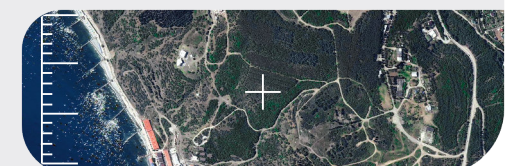


- **Persistent ISTAR** - 48 hours (land for maintenance checks)
- **All Weather**  
26mph Wind and Heavy Rain
- **Up to 100m Altitude**
- **Operate Radio Silent** - data over the cable
- **In Flight Tether drop** with 30 min battery powered flight
- **Compact and easy** to transport
- **Compatible** with 220v/230v/ 110v/440v power supplies
- **Fully compatible with Sky Mantis** out of the box
- **Able to be operated from moving platform**



## FIELD TO CLOUD™

- **LTE / 3G / 4G / 5G 4x SIM** bonded dynamics load balanced router
- **SATCOM** compatible
- **C6ISR** infrastructure integrated
- **Flexible Server Hosting**
- **Compatible** with existing infrastructure
- **Live stream dual video and telemetry** anywhere in the world
- **Ultra-low Latency** (800 ms, less than 1 second lag)
- **Fully Encrypted**



## NANO UAV™

- **249g MTOW**
- **35 minutes** Flight Time
- **Best-in-Class Weather Resistance** - 35mph Wind and Heavy Rain
- **Rapid Interchangeable payloads** - daylight, thermal, speaker and more
- **Bespoke All weather GCS**
- **Compatible with existing C2**
- **Fast hardware for EDGE processing** (AI, object classification etc)
- **Robust propeller guards** for indoor flight

