

Bespoke electronic support services

Together...it's possible



This is **WHY...** ...we're **DIFFERENT**

Bela Electronics provides innovative and functional design for manufacture, from low to medium volume assembly for a wide range of industries, from SME businesses to world class organisations.

Based just outside Bedford and part of the Cambridge tech hub, commonly known as 'Silicon Fen', Bela boasts an impressive array of technical expertise alongside the most up to date manufacturing facilities.

Bela, is part of the **TechPoint Group**, which consists of Bela Electronics, Vanilla Electronics, Interconics and Gollodge Electronics. Our 'Centres of Excellence', as we truly believe they are, are all experts in their individual fields.

By combining our strengths and aligning with our group strategy, we can provide an end-to-end supply chain and electronics manufacturing service to a global technology marketplace.



...our value added services



Altium Designer software



Electromechanical assembly



Fast track service



ISO 9001 accredited



New product Introduction (NPI)



Pre-production trial build



PTH assembly



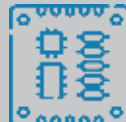
Project recovery



Prototyping



Reduced time to market

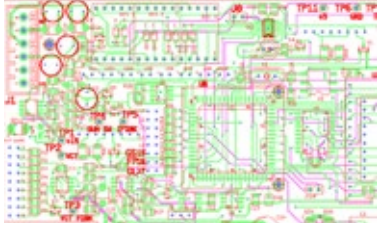


SMT assembly



Testing and verification





Electronic engineering development

We help design and develop innovative new products, using the latest technology, ensuring production costs are kept to a minimum.



Test facilities

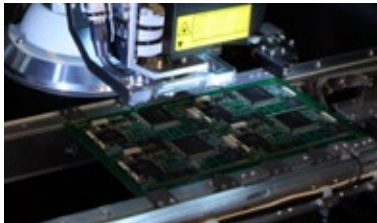
Our test facilities enable us to carry out full or part testing on all manufactured products, as well as calibrating and supplying a fully tested and functional PCB or complete assembly.

This is **WHAT...** ...we **DO**



Flexible production

Our leading edge automated SMT manufacturing solutions are a totally flexible and resilient resource. It gives your business a huge advantage enabling **rapid change over**, and the capability of working with **one off prototypes, NPI and small batch production**.



Our multi function 'pick and place' platform enables the highest level of flexibility and feeder count. Our equipment is widely configurable without the need to compromise on feeder count, placement speed or component capability.



Supply chain management

We offer a full procurement and kit preparation service. All our components, PCBs hardware and tooling fixture requirements are fulfilled by our sister companies within the TechPoint Group.



Quality control

Our robust quality systems drive our traceable manufacturing processes and ensures repeatability. All products go through a rigorous sign off process and all components and work is inspected.





This is **WHERE...** ...we **WORK**

Our services and electronic solutions are used in OEM markets and world class products including, aerospace, audio, commercial, communications, defence, instrumentation, medical, industrial, motorsport, offshore services and scientific.



motorsport



aerospace



audio



commercial



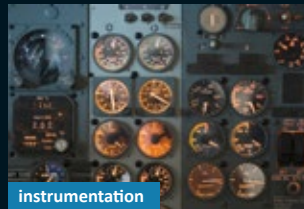
communications



defence



industrial



instrumentation



medical



offshore and subsea



scientific

Solutions for OEM markets...
...and world class products



Need it **FAST...** ...need it **NOW...?**

FAST TRACK delivery on free issue kit

Where component kit is available immediately, a truly fast track delivery is easily achievable. If your kit contains blank PCB and all key components, we can supply the consumable resistors and capacitors from stock.

FAST TRACK prototypes

We help accelerate your development processes through our fast and flexible prototype services.

FAST TRACK disaster recovery

If you've been let down by your existing contractor or have an unforeseen spike in demand, we have an 'out of hours' and 'excess capacity' philosophy making us incredibly flexible and resilient.

FAST TRACK blank PCB and component kit

Our sister businesses within the TechPoint Group are expert in short lead time and supply chain management projects, and we work closely with customers to ensure the very best fast track service is achieved.



REACT+

...flexible and resilient



This is **WHAT**... ...we **PROMISE**

We believe that when choosing an electronics support solutions partner, you're not only selecting a supplier, but rather a business partner that can work with you as your business changes and grows.

Our customer liaison team work closely with all departments to ensure that all customers experience the very best levels of service.

We also have a stringent Quality Control processes which manages and records any issues that may arise during the manufacturing process and helps with any enquiries or technical support issues you may have about the services you have commissioned.

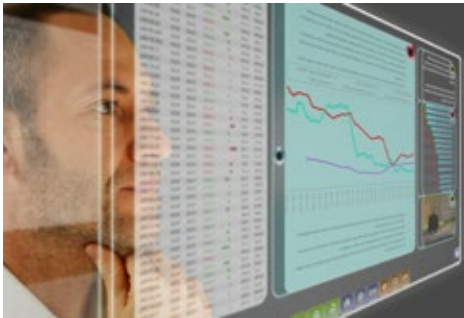


Our aim is to offer a truly comprehensive service solutions proposition, offering complete solutions to your business, whatever its shape, or its size.

Put simply, that means outstanding service and expertise are key to a great customer experience with us; we don't shoehorn our solutions into customers, and we spend as much time as is needed to really understand your project needs and identify additional sector specific challenges to offer added value and resilience.

competitive
ADVANTAGE

We'll help your business gain a competitive advantage, through the best pricing in the industry and get your 'goods to market' faster.



overcoming
CHALLENGES

We'll help you through technical issues, with our technical manufacturing flexibility and built in resilience.



increased
PRODUCTIVITY

We'll deliver your projects as quickly as is possible, which helps increase your workflow and reduces your costs.





Together...it's possible

