



**CQC**



# Load Carriage & Personal Protection

## Integrating the Soldier Platform

CQC have a long standing history in the design and manufacture of world leading load carriage, body armour and Integrated Soldier Systems and for over 60 years we have been at the heart of military personal equipment and at the forefront of new dismounted capability & technology.

CQC's award winning Osprey body armour system with its uniquely designed modular capability allows dismounted troops to modify its configuration to individual mission specific needs. Osprey is designed to ensure maximum flexibility in the distribution of weight and integration of ballistic protection, without the need to compromise on combat effectiveness.

# Modularity, Survivability and Capability



A lighter weight MOLLE system is a key design feature of CQC's latest systems, further enhancing the modularity and weight reduction of CQC designs. This enables the user to configure their system to their own mission specific needs.

Quick release and bespoke adjustable fixtures are a standard feature of CQC designs. Enhancing user capability with configurable straps, buckles and fixings to accommodate additional load. Extensive Human Factors engineering and research means one size does not have to fit all.

Additional protection can be added and removed as required. Building a scalable system into a more effective protection platform to meet evolving threats.

Further features include the integration of padded hip belts to help users distribute the load across the waist as well as the shoulders, increasing the wearers comfort and effectiveness for prolonged dismounted operations.

Integrating soldier technology further reduces burden and limits "snagging", reducing the soldier burden, while enhancing their overall effectiveness in rapidly changing operational environments.





*CQC's pouches are designed specifically for their intended equipment no matter how small, or how detailed.*



# Endless Combinations

## Increased flexibility, modularity, capability and reliability

Load carriage is the corner stone of CQC's approach to Soldier Systems. Ensuring the users can operate as effectively as possible without compromising on protection and reliability. CQC's award winning Osprey MK4 system is leading the world in integrated, modular systems. Further innovations incorporating Man Worn Power & Data (MWPD) systems, dismounted technology and specialist textiles and cabling push the capability and the options even further.





# A modular solution to carriage and protection

Since personal protection for soldiers became an urgent requirement in early 2003, CQC have worked closely with partners and the end user community to design, develop and deliver a world-class system. By maintaining our strict quality and design standards and working directly with our end users, Osprey has become an integrated and optimised load carriage and protection system to meet the most demanding requirements, challenges and threats.

With nearly 300,000 systems delivered, Osprey is battle proven in some of the worlds most harsh and hostile environments and has earned a deserved reputation for design, capability and quality.





# Research, Design & Development

## Creative solutions to meet your requirements

At the centre of our approach to the Soldier Platform is our Research and Development team - one of the most highly regarded teams within the load carriage and Soldier Systems markets. Our experienced R&D team have been designing, prototyping and innovating to meet customers' unique and bespoke requirements for over 40 years.







## Prototyping: Test and evaluation samples

Prototypes are built from the same high quality materials as full production systems. This allows end users the ability to thoroughly test each system to its full potential. Our prototype delivery is rapid – measured usually in hours or days, not weeks or months.

R&D continue to deliver world class capability across a wide and diverse range of environments and unique requirements. The integration of technology and leading edge materials is at the heart of every design.



By Design

By Innovation

By Commitment

By Quality





# Integrating the Soldier of the Future

Dismounted Soldier Technology is a major force differentiator in today's battlefields. Modern dismounted C4i capability has increased significantly in the last decade enhancing the flexibility and survivability of forces across the world.

These innovations, while adding significantly to DCC forces' effectiveness, have in-turn increased the burden to extreme levels. CQC are leading the way in the integration of existing and new technologies and equipment to enhance capability, while continually striving to reduce burden.

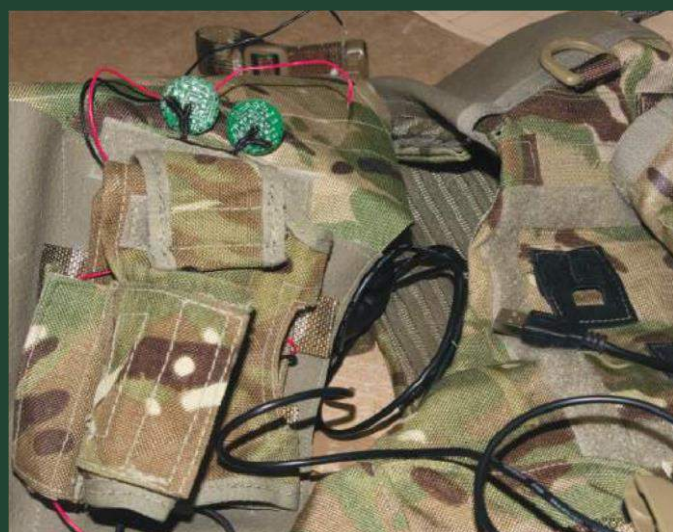






CQC's development of integrated soldier worn systems, supported by a wide range of partners and technology experts are continually reducing the burden and enhancing capability. Innovative Man Worn Power & Data (MWPD) designs continue to push the boundaries of soldier technology, survivability and capability.

Building the equipment and connectivity of the "Soldier Platform", delivering a more seamless and integrated solution that reduces the burden, maximises the "irreducible minimum" and enhances overall effectiveness.



By Design

By Innovation

By Commitment

By Quality





# Modularity, Capability and Survivability; delivered consistently for over 60 years

Bespoke designs and integrated solution's to meet the most demanding conditions







# Design & Development

CQC have a long-standing history in the design and manufacture of world class load carriage, body armour and integrated soldier systems.

For over 60 years we have been at the heart of military personal equipment and are at the forefront of new dismounted capability, technology and survivability.

By Design

By Innovation

By Commitment

By Quality





# Manufacturing

Our ability to manufacture as well as design allows us the flexibility to meet constant changes and new requirements rapidly without compromising on quality. CQC employ the latest capability and technology to ensure our processes stand up to the highest standards and consistently exceed expectations.

Our production team are committed to ensuring that every product, every system and every individual component that leaves our facility is built to the very highest of quality standards.

We are ISO9001 accredited and seek to continuously improve our processes and products.







# Materials

For over 60 years CQC has built a solid reputation for using the very highest specification materials available. As the standards of integrated load carriage and protection systems become ever higher, we continue to push the boundaries of capability and durability across all of our material types. We are committed to continually introduce innovative technologies as they mature.

Striving to continually meet the demands of the end user and the operating environment, CQC have an unwavering commitment to only use the very highest quality of materials, specific to our customer's needs and demands.



By Design

By Innovation

By Commitment

By Quality





# CBRN


We at CQC have over 20 years' experience in the CBRN industry, starting our NBC career manufacturing the UK MoDs MK4alpha.

CQC can now offer unique design experience as our design capability is responsible for the design and development of the UK Police Civil Responder 1 suit (CR1) and the Quick Don Swift Responder suit (SR3) also used by the UK police.

We are the UKs only manufacturer of CBRN suits. CQC offer unique designs as all our suits are developed on site by our highly skilled and experienced Research & Development team.

Here at CQC we understand how importance the fit of our specialised suits are therefore we offer a wide size range with an option of Special Measured Suits which can be tailored to meet any requirement.

CQC understands the importance of interfacing our suits with ancillary products such as boots gloves and respirators, as this creates a CBRN Protective Ensemble. We have excellent relationships with ancillary suppliers and are constantly working side by side to progress technology to the next level.







Following the extremely successful launch of our Low burden range of CBRN suits in 2014 the 'Raptor' and 'Targa', CQC are excited to increase the range in 2015. We are confident our new designs and technology will be every bit as successful.

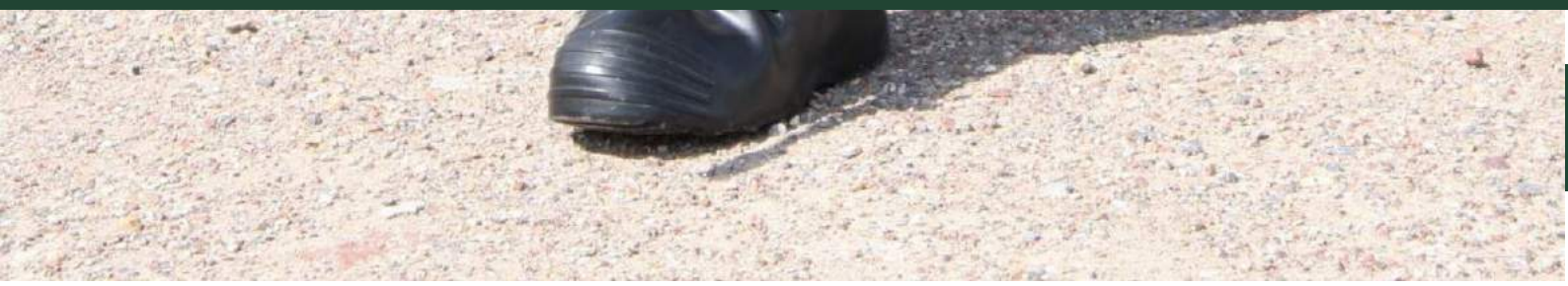
All our Suits are tested in accordance with NATO standards and provide:-

24 hours protection against Laid Droplet diffusive flow, Mustard Agent (HD) 10g/m<sup>2</sup>

In accordance to BS8467 and Vapour HD, 11mg/m<sup>3</sup> (6 hours.)

We exceed the Man In Simulant (MIST) physiological protection dosage factor (PPDFsys) required for a Class 3/Category C ensemble. In accordance to BS8467 and NFPA 1994 2012 edition.

All MIST tests are conducted using certified ancillary products.





A person wearing a black and red life jacket is holding a red fibrelight emergency ladder over the side of a boat. The ladder is made of red webbing and carbon fibre, and it is being held in a way that shows its structure. The background shows a body of water and a shoreline with trees.

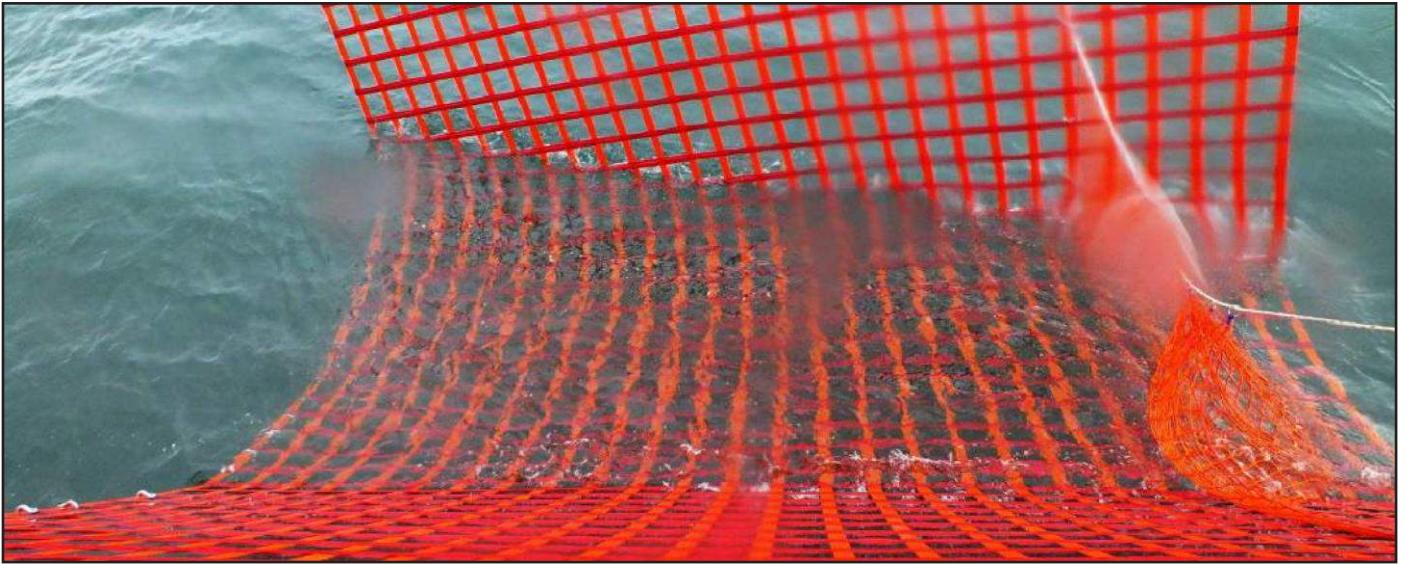
# Fibrelight Emergency Ladder:

This is a SOLAS approved means of embarkation or evacuation. The Emergency Ladder is manufactured of webbing and carbon fibre; it is available in lengths from 2 - 30 meters. These Emergency Ladders have recently been accepted by the Maritime Coastguard Agency for use onboard UK ships. They are compact and lightweight, a 30m ladder weights less than 30kg.

# Fibrelight Recovery Cradles:

These SOLAS approved MOB recovery devices are manufactured of the same material as the ladders, they are 1.3m wide and come in lengths from 2 - 7 meters. The Cradles serve several uses, either to recover an unconscious casualty, to be used as a scramble net or as a temporary stretcher. They are lightweight, easy to use and take up very little room. Unlike their competitors they require no servicing.

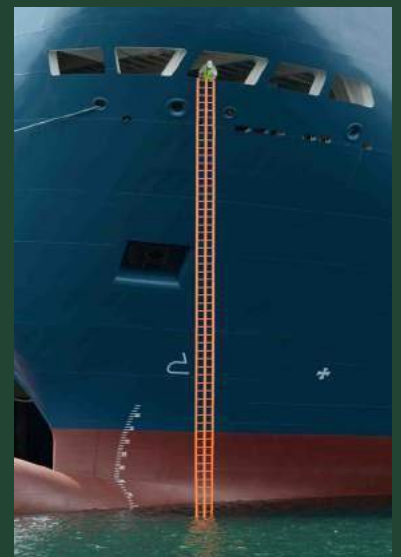




# Fibreight Stretchers:

There are 3 types of Stretchers to suit different requirements,

- The Rod Stretcher can be used in vertical or horizontal lifting; it can also be fitted with flotation supports to be used in marine rescue.
- The 4 Part Folding Stretcher has been designed to fold into a rucksack or be carried over long distances but still become a rigid spinal support when extracting a casualty.
- The 2 Part Folding Stretcher offers some benefits of the other two stretchers and is ideal for a First Responder to fit in the boot of their car.



By Design

By Innovation

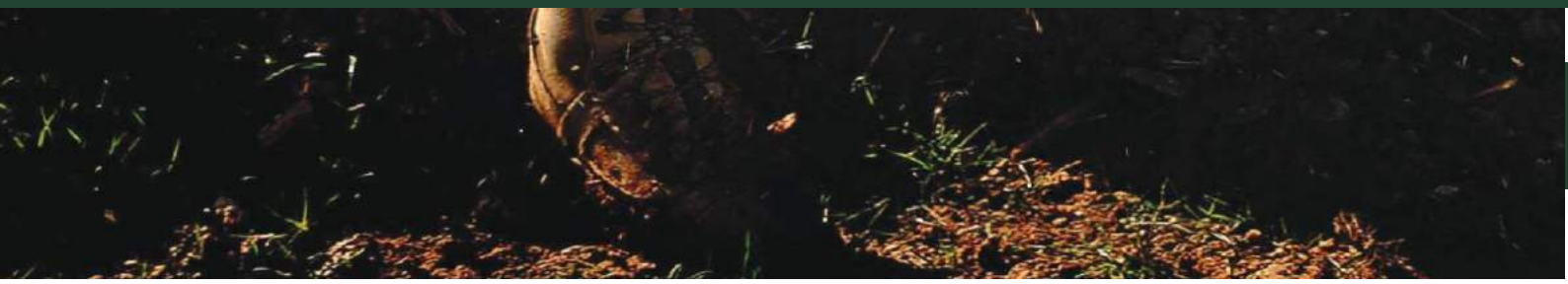
By Commitment

By Quality





**CQC are leading the world in the design, development and innovation of new technology and integrated solutions to constantly improve our customers' capability, durability and survivability.**









**CQC Ltd**  
**CQC House**  
**2-3 Brannam Court**  
**Brannam Crescent**  
**Roundswell, Barnstaple**  
**EX31 3TD**

**Tel: +44 (0) 1271 345678**  
**Fax: +44 (0) 1271 371057**  
**[www.cqc.co.uk](http://www.cqc.co.uk)**

