

ACT POWER TAIWAN CO., LTD.

TOGETHER  
BEYOND  
THE  
SUMMIT





## SUSTAINABLE DEVELOPMENTAL PLAN

ACT POWER is committed to being one of the leading technology service providers around the world. We are constantly looking for opportunities to create value for customers and create mutual prosperity and mutual benefits.

## SOCIAL RESPONSIBILITY & ENVIRONMENTAL POLICY

We are committed to maintaining ecological balance, promoting corporate social responsibility, promoting green production, actively participating in charity activities, paying attention to vulnerable groups, promoting the physical and mental health and safety of employees, and creating an open business stage for talents to fully develop.

## TOGETHER BEYOND THE SUMMIT

Dear valuable partners,

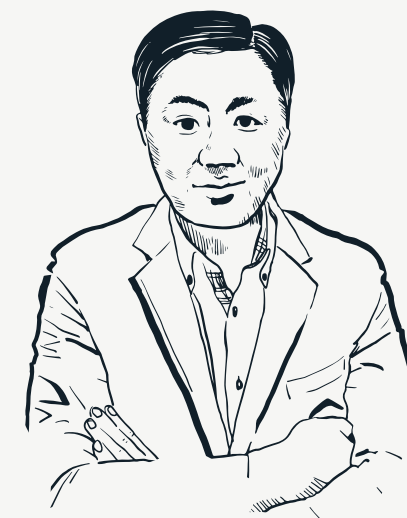
It is with great pleasure and pride as the CEO of our company that I address you today. Over the years, we have overcome numerous challenges and accomplished significant milestones to become a leading player in our industry. However, we acknowledge that our journey does not end here, and we must continue to strive for excellence.

Therefore, I am thrilled to announce our new company-wide initiative, "Together Beyond the Summit." This initiative is focused on promoting teamwork and collaboration. We strongly believe that by working together, we can achieve greater heights and overcome any obstacles that we may face. Our commitment to supporting each other, sharing knowledge, and striving for excellence remains resolute.

Beyond being a mere slogan, "Together Beyond the Summit" represents our values, beliefs, and philosophy. We aim to foster a culture of innovation, collaboration, and teamwork that will propel our company forward for years to come.

I encourage all of you to join us on this journey towards greatness. Let us work together, embrace the spirit of collaboration, and attain our goals. We believe that with collective effort and a determination to succeed, we will reach even greater heights.

Thank you for your continued support and dedication to ACT Power Taiwan Co., Ltd.



President  
Li-kuo, TSAI

A stylized, handwritten signature in black ink, appearing to read 'Li-kuo' followed by a large, sweeping flourish.

# CORPORATE INFORMATION

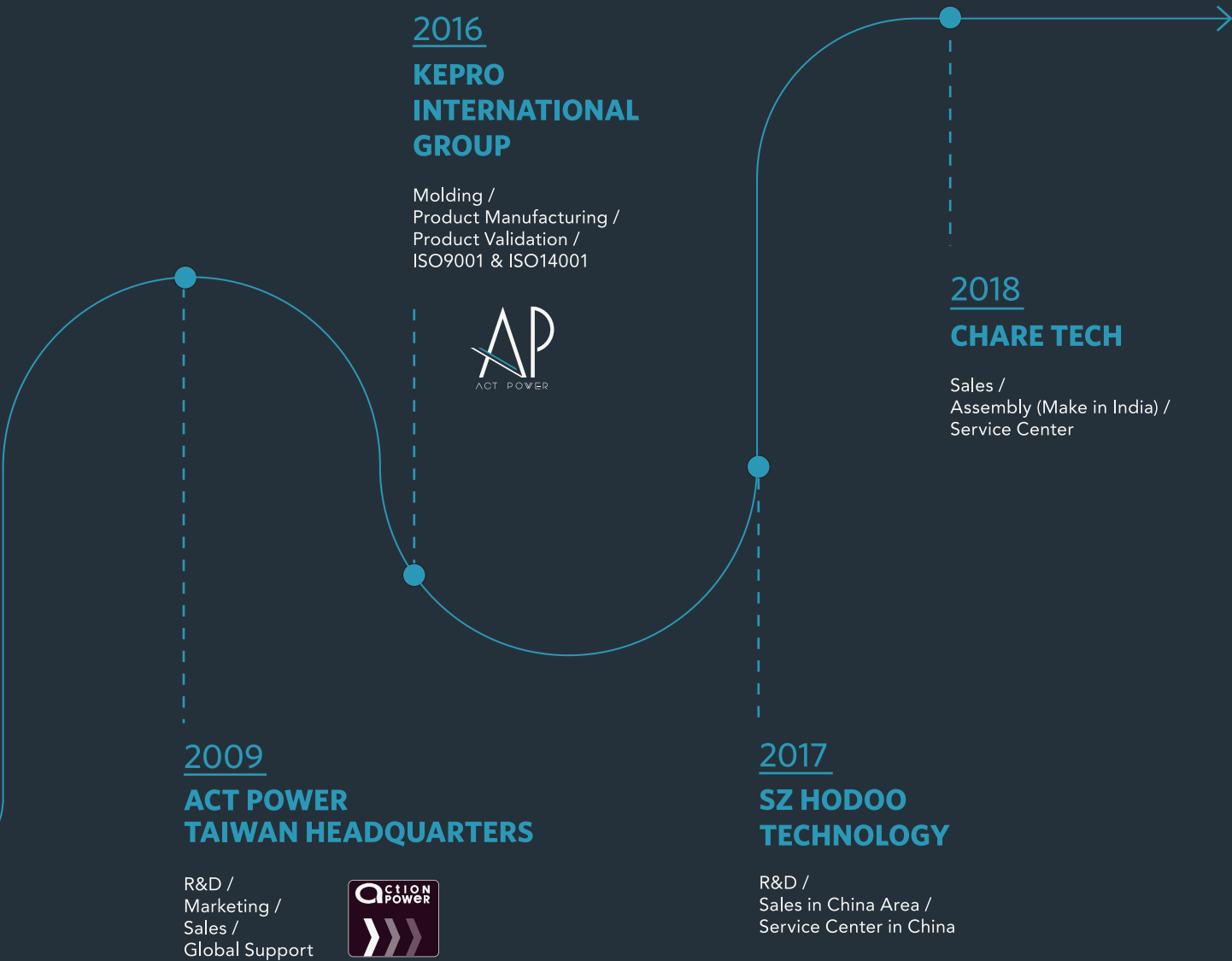
## HISTORY & BACKGROUND

Welcome to ACT POWER, a company specializing in IPC and IOT fields, was established in 2009. In 2016, we underwent a rebranding process to update our corporate logo and convey our values of intelligence, creativity, professionalism, and modernism. Our mission is to provide comprehensive customization services in these fields.

As we enter 2023, we are excited to announce our new corporate identity and slogan, "Together beyond the summit." We believe that artificial intelligence (AI) is the key to creating more opportuni-

ties and bridging the gap between A and A+ excellence. With this belief, we are committed to incorporating AI features into our upcoming innovations.

To support our rapid growth, we are proud to announce that ACT POWER will have its own dedicated Validation Center. This will provide us with the resources we need to continue to innovate and exceed expectations. We are excited to continue on our journey of growth and excellence, and we invite you to join us "together beyond the summit."



WE MAKE  
PRODUCTS  
THAT MEET  
YOUR NEEDS!

ACT POWER was created by a group of experienced engineers and marketing planners who have been in the industrial PC sector for many years. More than just production and sales, our company specializes and takes pride in customized design services, and unique marketing ideas in the technology industry.

ACT POWER offers DTOS (Design To Order Service) and

OEM/ODM services, tailoring products to customers' requirements and assisting clients in the selection of the most cost-effective customized solution. Our comprehensive product lines include Mini PCs, Fanless Industrial Computers, and Imaging Automation products, among others. One of the keys to our success is our flexibility and dedication to meet the exact needs of our customers, from one-off configuration to large production.

## CORE VALUE

At ACT POWER, we believe in the importance of sharing knowledge for personal and business growth. Our passion for fostering partnerships with clients is fueled by our core values of partnership, professionalism, innovation, and integrity. We are committed to providing our partners with resources and open communication to ensure mutual success. Our dedication to innovation drives us to develop cutting-edge products that meet the dynamic needs of modern businesses.

With comprehensive quality control, clients can rely on us for long-term cooperation in pursuit of their goals. Our ultimate measure of success is the success of our clients, and we invite you to join us on a journey of partnership, innovation, and integrity towards new heights of success.

# TOGETHER BEYOND THE SUMMIT

Teamwork and collaboration to achieve a difficult or ambitious goal.

It implies that by working together, we can overcome obstacles and reach new heights that we might not be able to achieve alone.

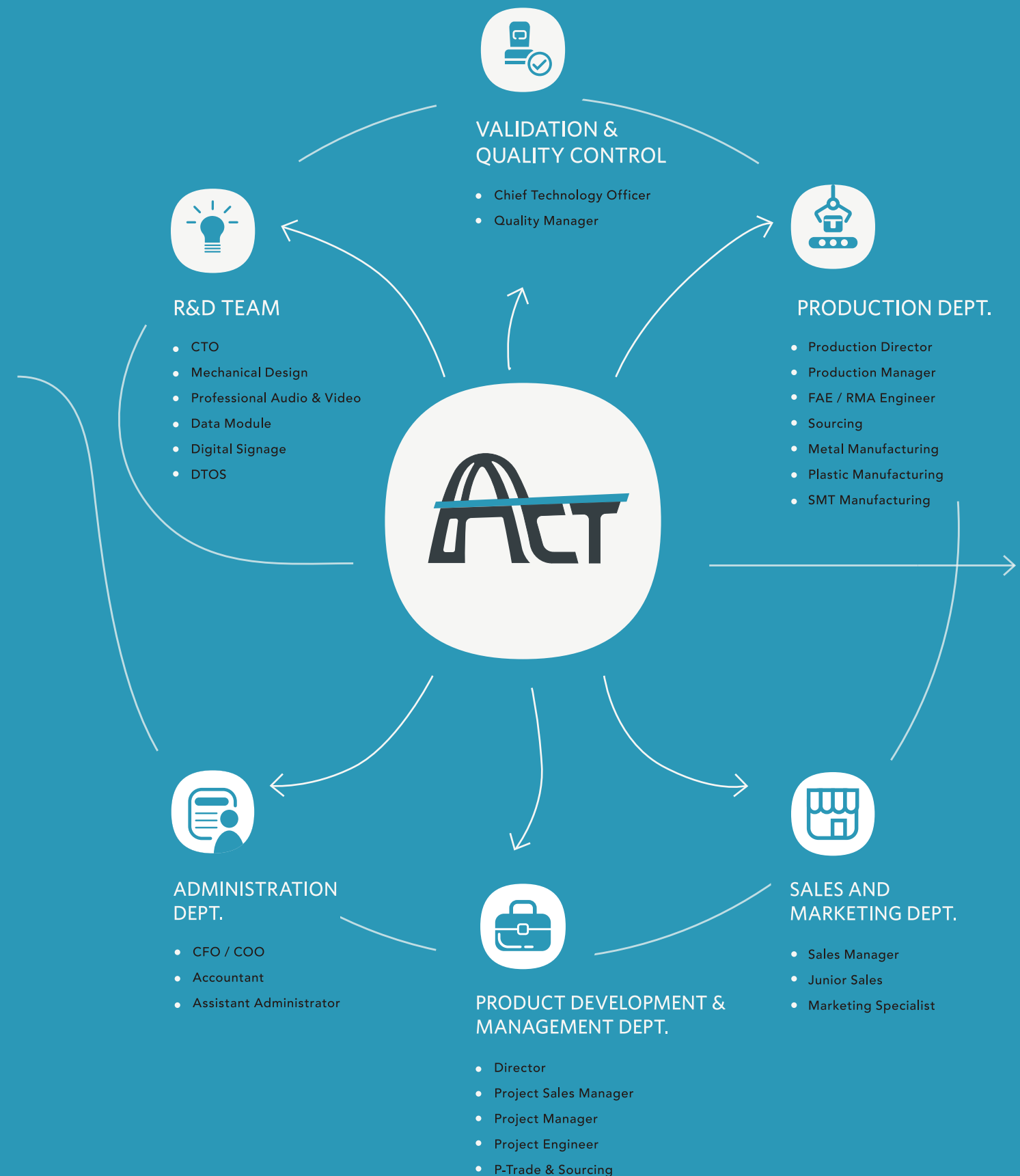
## VISION & MISSION

At ACT POWER, we are committed to providing our clients with the latest innovations in the IPC industry, and beyond. Our vision is to expand our expertise and knowledge to the web services industry, recognizing the growing importance of IoT in daily life. We are dedicated to contributing to this field, now and in the future, by developing intelligent solutions for business associates, using smart materials in meeting rooms, boardrooms, classrooms, lounges, and public areas. Our goal is to make life simpler and more convenient for our users, allowing them to easily control and manage their environment through their watch, phone, tablet or PC.

Our products will provide seamless automation of daily tasks, from dimming lights to turning audio/video devices on or off, opening or closing projector screens and curtains, or making presentations. Our easy-management interface is designed to be user-friendly for everyone, not just those in the tech industry, making our solutions accessible to all. At ACT POWER, we are driven by our mission to simplify life and enhance productivity for our clients through innovative and intelligent solutions.

PROVIDE THE BEST QUALITY WITH FULL DEDICATION

## ORGANIZATIONAL STRUCTURE





# PRODUCT AND SERVICE

ACT POWER provides global system integration and startup partners with high-efficiency Design-to-Order services, allowing them to reduce the risks associated with new system development. Our professional design team in Taiwan works closely with partners to determine product specifications, configurations, and platform integrations. With a low entry development fee, we make it easy for partners to take advantage of our expertise and bring their innovative ideas to life.



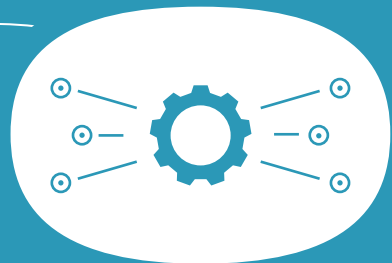
## HOUSING DESIGN PACKAGE

| A   | B  | C   |
|---|--|---|
| Full Service  | Professional Service   | Elite Service   |
| <ul style="list-style-type: none"><li>ID Design</li><li>3D Drawing Creation</li><li>Mock Up Sample Creation</li><li>Tooling Creation</li><li>Sample Production</li><li>Pilot Run Production</li><li>Mass Production</li></ul> | Customer offers its ID design and we offer all contents in Package A but ID Design | <ul style="list-style-type: none"><li>ID Design</li><li>3D Drawing Creation</li><li>Mock Up Sample Creation</li><li>Tooling Creation</li><li>Sample Production</li><li>Pilot Run Production</li><li>Mass Production</li></ul> |
| can be completed from ID Design to Mass Production in 90 Days   | can be completed from 3D Drawing Creation to Mass Production in 60 Days            | can be completed from Mock Up Sample Creation to Mass Production in 45 Days   |

## BROAD DESIGN PACKAGE

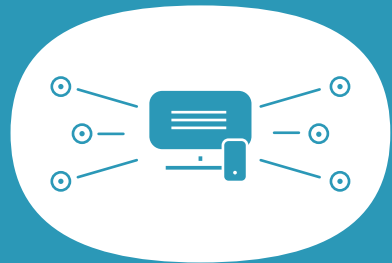
| A   | B   | C  |
|---|---|--|
| x86 board design from current product   | x86 board design as new product   | embedded SoC board design service  |
| <ul style="list-style-type: none"><li>Schematic and Gerber</li><li>Bill Of Materials List</li><li>Production Guide</li><li>Production Service</li></ul> | <ul style="list-style-type: none"><li>Product Specification Draft from customer demand</li><li>System block diagram</li><li>Schematic and Gerber</li><li>Bill Of Materials List</li><li>Production Guide</li><li>Production Service</li></ul> | <ul style="list-style-type: none"><li>Development board and SDK service</li><li>Production Specification Draft from customer demand</li><li>System block diagram</li><li>Schematic and Gerber</li><li>Bill of Materials List</li><li>Production Guide</li><li>Production Service</li></ul> |
| This service can be completed from schematic to production in 45 days   | This service can be completed from Product Specification Draft to Production in 90 days   | can be completed from Mock Up Sample Creation to Mass Production in 45 Days  |

# FEATURES & ADVANTAGES



## HARDWARE INTEGRATION

- ✓ Special Boards
- ✓ Multiple Hard Drives
- ✓ Dc And Special Power Inputs
- ✓ Custom Chassis Designs



## SOFTWARE INTEGRATION

We can install and manage standard or customer's proprietary software



## PERSONALIZATION

Build your own brand by providing your product in custom colors or simply add brand logo



## FAST DELIVERY

We provide full and consolidate container base on customer's different shipment quantity with a variety of transport shorten the shipping process.

# CUSTOMER SUPPORT AND SERVICE INFORMATION

## RMA (Return Merchandise Authorization)

STEP

1



The customer submits an RMA request.

STEP

2



Check the warranty status.

\* Our company's product warranty period is one year. If the product is not within the warranty period, fees may be charged at our discretion.

STEP

3



Assist the customer in completing the RMA request form and issue an RMA No. for the customer to return the RMA item.

STEP

4



After receiving the RMA item, it will be handled by our professional RMA department for repair.

STEP

5



After the product has been repaired, the RMA department will provide an RMA report explaining the cause of the fault and the repair details for the specific RMA case.

STEP

6



The after-sales service unit is responsible for contacting the customer and arranging for the return of the product and subsequent quality confirmation matters.

STEP

7



Ensure that the RMA item functions properly after repair.

STEP

8



Close the RMA case.

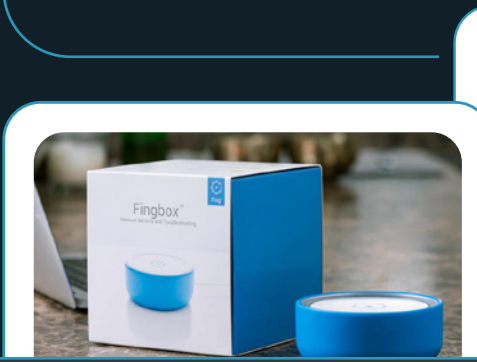
# SUCCESS STORIES

2017-2022



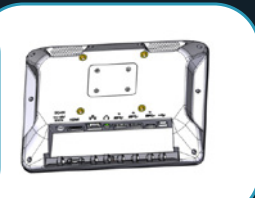
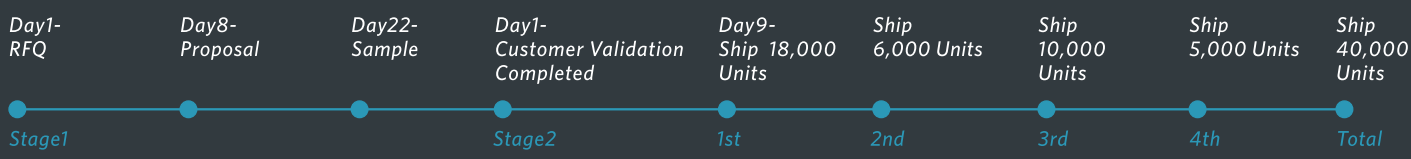
## 2019 13.3" Rugged Monitor

Rugged and Ergonomic Mobile Workstation  
Transitions seamlessly from the vehicle to the office space  
From Concept to total solution.



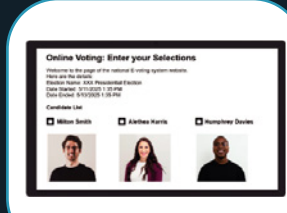
## 2017 Fingbox

Network Security and Troubleshooting  
Fingbox is the digital caretaker that watches over your network to detect intruders, block devices and analyze the quality of your Wi-Fi and Internet connection.



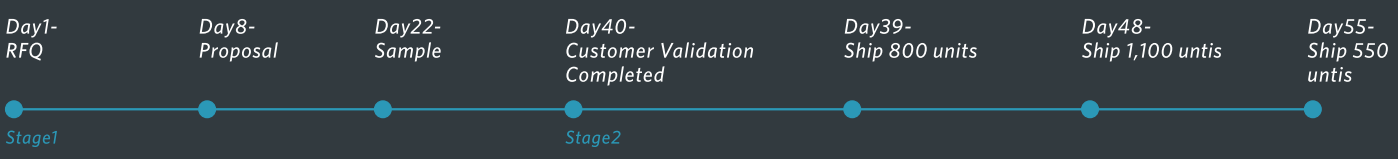
## 2020 8" Rugged Monitor

The display is compatible with the Samsung DEX system ecosystem, thereby offering a highly economical, ruggedly sturdy, and ergonomically designed safe mobile workstation experience.



## 2021 21.5" Tablet with Battery Support

Voting Tablet with Kiosk Application  
Efficient and customized solutions for elastic application.  
E-solution is part of people's life. In May 2022, there are more than 254,000 voters participated in the Histadrut Election in Israel. ACT POWER provided about 2,500 units of 21.5" tablet for this voting event.



## 2022 Rugged Box PC

Description: With its field-proven thermal design, significant CPU and I/O upgrades, the ISY-B00D-M series fits your need for ruggedness, performance, and versatility for a variety of applications.





# DISTRIBUTOR INFORMATION



# CONTACT INFORMATION

|                                 |             |  |
|---------------------------------|-------------|--|
| BASIC<br>CONTACT<br>INFORMATION | Tel         | +886-2-25595216  |
|                                 | Fax         | +886-2-25595218  |
|                                 | Address     | 2F-3, No 110 Sec. 1, YanPing N. Rd. Datong Dist., Taipei City 10341, Taiwan  |
|                                 | Email       | sales@actpower.com.tw  |
| WEBSITE<br>&<br>SOCIAL MEDIA    | Website     | www.actpower.com.tw/   |
|                                 | FB          | ACT Power Taiwan Ltd (www.facebook.com/ACTPOWERTaiwan)   |
|                                 | YouTube     | ACT POWER TAIWAN CO., LTD (www.youtube.com/channel/UC4gM_S4EP_EiAK84taEEFgQ)   |
|                                 | LinkedIn    | ACT POWER Taiwan Co., Ltd. (www.linkedin.com/company/act-power-taiwan-ltd./)   |
| DISTRIBUTOR<br>INFORMATION      | India       | <b>Thirdwave Ruggedtech Pvt. Ltd.</b><br>+91-932-8283304<br>info@thirdwaveruggedteck.com<br>www.thirdwaverugged.com<br>B-4, Chaitanya, opp. Maradia Plaza, Ellisbridge, Ahmedabad-380006, Gujarat, India.                                |
|                                 |             | <b>VARISIS Advanced Engineering &amp; Software Technologies India Pvt. Ltd.</b><br>+91-120-4213659<br>info@varisis.in<br>www.varisis.in<br>Plot No-06, Block-B, Sector-58, Phase_III, Noida-201301, Uttar Pradesh-, Ind                  |
|                                 |             | <b>Univa Technologies Pvt. Ltd</b><br>+91-802-22290038<br>info@univatech.com<br>www.unified.co.in<br>Jains Heights-Solus , 3rd Floor, Unit G & E, 1st Cross, J.C. Road, (Opp. Jain College),Sampangi Rama Nagar, Bangalore–560027, India |
|                                 |             | <b>KJ ENERGY PRODUCTS PRIVATE LIMITED</b><br>+91-080-29515133<br>Sales@kjenergy.in<br>No. 229, 11th Main, 2nd cross, 3rd Phase, Peenya Industrial Area I Bangalore 560058  |
|                                 |             | <b>Universel Tech Solutions Ltd.</b><br>+91 9555751100<br>utsinfo@universeltechsolutions.com<br>http://universaltech-solutions.com/<br>#77, 7th Main, vinayaknagar, bagalur cross, yelahanka BANGALORE 560063                            |
|                                 | Singapore   | <b>Hornbill Rugged Networks Pte. Ltd.</b><br>+65 6444 9434<br>info@hornbillrugged.com<br>www.hornbillrugged.com<br>41 Kallang Pudding Road, #04-03B, Golden Wheel Building, Singapore, 349316  |
|                                 | Dubai       | <b>Miltec Rugged Computer Solutions LLC</b><br>+971 4 3795910<br>info@milcomputing.com<br>Milcomputing.com<br>#301B, Al Nakheel Building, AL Karama, PO Box-126830, Dubai, UAE   |
|                                 | New Zealand | <b>Project-X Technologies Ltd.</b><br>+64 9 3030198<br>mehome.co.nz@gmail.com<br>154 Queen Street, Auckland CBD, Auckland 1010   |
|                                 |             |  |
|                                 |             |  |

TOGETHER  
BEYOND  
THE  
SUMMIT





## SUSTAINABLE DEVELOPMENTAL PLAN

ACT POWER is committed to being one of the leading technology service providers around the world. We are constantly looking for opportunities to create value for customers and create mutual prosperity and mutual benefits.

## SOCIAL RESPONSIBILITY & ENVIRONMENTAL POLICY

We are committed to maintaining ecological balance, promoting corporate social responsibility, promoting green production, actively participating in charity activities, paying attention to vulnerable groups, promoting the physical and mental health and safety of employees, and creating an open business stage for talents to fully develop.

WHAT IS ProAV / 01

PROFESSIONAL ProAV EQUIPMENT / 01

ProAV / 02

ENCODER / DECODER / 03

MULTIVIEWER / 04

HDMS / 05

WHY SHOULD SITUATION ROOMS CHOOSE ProAV? / 06

HOW DOES ProAV INTEGRATE WITH CASINOS? / 07

ACTUAL CASE / 08

WE MAKE PRODUCTS  
THAT MEET YOUR NEEDS



# WHAT IS ProAV

ProAV is commonly used in various industries such as commercial, education, government, entertainment, etc., providing high-quality and reliable audio and video equipment and services.

## PROFESSIONAL ProAV EQUIPMENT

ProAV systems require professional audio and video equipment, including sound systems, displays, projectors, cameras, encoders, decoders etc. We mainly provide professional encoders, decoders and switches with various functions to meet these requirements.

### INPUT SOURCES

#### TRANSMITTER

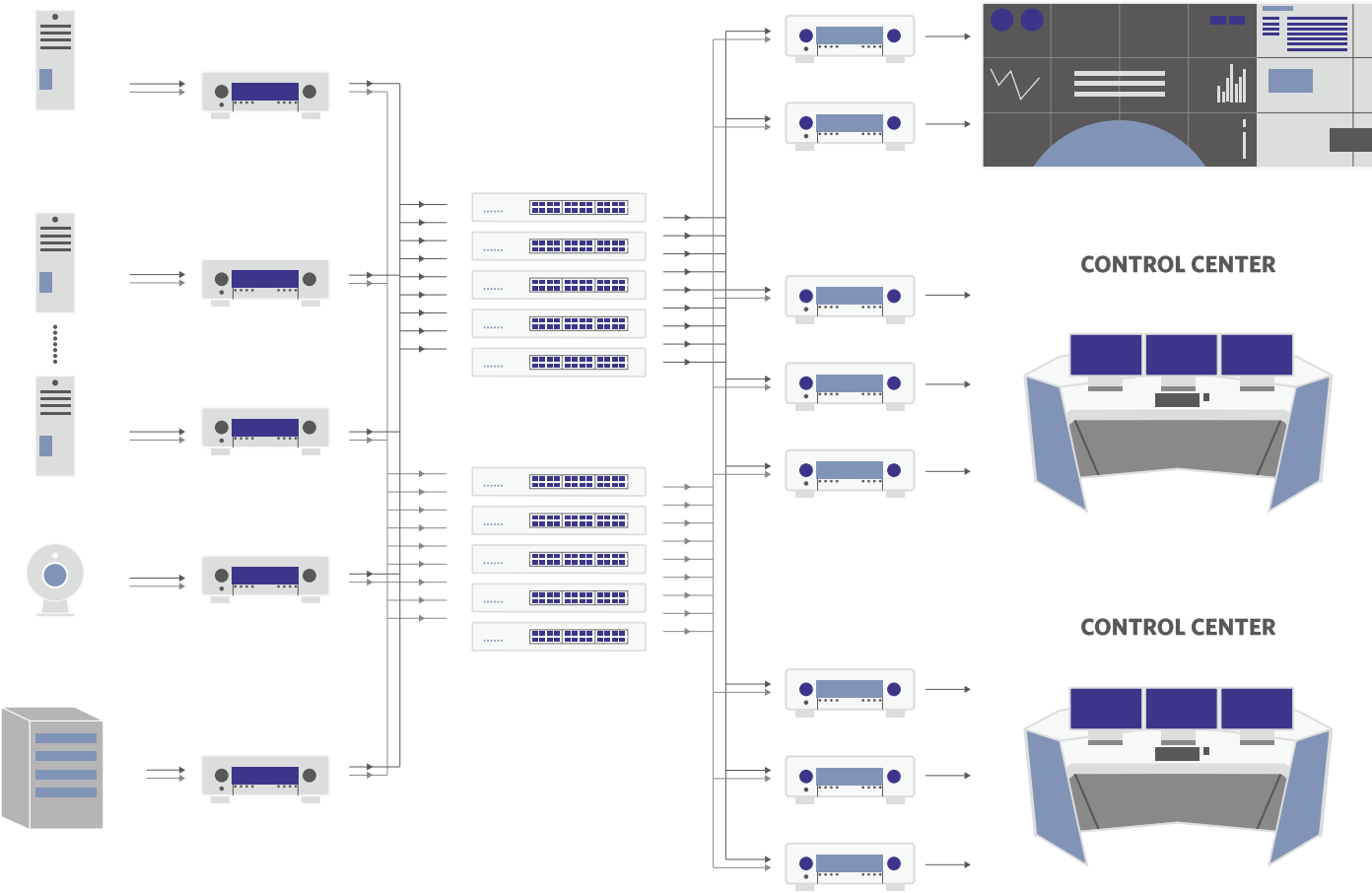
#### MANAGEMENT SWITCH

#### RECEIVER

#### DISPLAY SETUP

#### CONTROL CENTER

#### CONTROL CENTER



# ProAV

In addition to industries such as commercial, education, government, and entertainment, ProAV has many other applications. For example, it can be applied in the medical field for capturing, storing, and playing medical images and videos; in the transportation field for monitoring, recognizing, and recording traffic flow, vehicle trajectories, and other information; and in the security field for video surveillance, intrusion detection, access control systems, etc. Furthermore, ProAV can also be used in cultural heritage preservation, virtual reality, and other fields to provide applicable audio and video solutions for various professional needs.



SERVER ROOM & CONTROL ROOM



MORE THAN ONE SCREEN



SPLIT ONE SCREEN FOR HOSTS



1



ENCODER / DECODER

Encoders are widely used in the fields of audio and video transmission, digital communication, digital storage, etc. They can improve the transmission and storage efficiency of digital signals, reduce transmission and storage costs, and also ensure the quality and reliability of digital signals.

2

MULTIVIEWER



Viewing multiple data sources or video sources through MultiViewer can increase efficiency and productivity. For example, an editor can use multiple windows to view multiple video sources, allowing for better decision-making during the video editing process. Similarly, a data analyst can use multiple windows to view multiple data sources, enabling better understanding of the data and development of better strategies.

HDMS

3



Users can easily construct multi-to-multi environments, execute multi-functional matrix functions, configure video walls, KVM applications, set up groups, scenario mode settings, monitor screens, and more. This is used in applications such as high-definition real-time transmission and interactive integrated control functions in broadcasting systems, exhibition centers, data center extensions, and other scenarios.



# 1

The rear panel of the RSC-1000 features the following ports and controls:

- Inputs:** CATS, FIBER (F15), HDMI, RS232 (blue 9-pin D-sub), LINE IN (pink), LINE OUT (green), and DC (5-15V).
- Outputs/Controls:** Link, RX G TX RS232, RW G T3 T2 T1 (green LEDs), IR to ext, IR in, Fun1, Fun2, and RS232 (USB) (Mini USB).
- Other:** A USB-A port and a USB-B port (labeled "USB-B device") are also present.

## SPECIFICATION DESCRIPTION

- 
- The front panel of the Raspberry Pi 4 Model B features the following components from left to right:
- LEDs:** Two small circular LEDs labeled "Link" and "Status".
  - Buttons:** Two circular buttons labeled "Fst1" and "Fst2".
  - Display:** A small green LED display showing the number "24 0 13 12 11" and the text "CPU: 100%".
  - Ports:**
    - DC (5-19V):** A black DC power jack.
    - CATS:** A small green CAT5 network port.
    - HDMI:** A standard HDMI port.
    - USB:** A standard USB-A port.
    - LINE IN:** A pink 3.5mm audio jack.
    - LINE OUT:** A green 3.5mm audio jack.
    - USB On-The-Go:** A black USB-C port.
    - RAID II:** A small green LED display showing the number "24 0 13 12 11" and the text "RAID II".

The front panel of the HP DesignJet 1100C printer features several ports and indicators. At the top, there are two sets of four small circular ports labeled 'Link' and 'Status'. Below these are two large circular ports labeled 'Fax1' and 'Fax2'. To the right of these are two USB ports labeled 'USB1.0' and 'USB'. At the bottom, there is a 'Gigaset' port (labeled 'GIGASET'), a 'GATE' port, an 'HDMI' port, and a 'LINE IN' port. To the right of these are two 'LINE OUT' ports (labeled 'LINE OUT' and 'LINE OUT') and a 'DIGITAL' port (labeled 'DIGITAL').

| MODEL               | FHD  | 4K30  | 4K60  |
|---------------------|--|---|---|
| MODEL               | PAV-T1001 / PAV-T1002<br>PAV-R1001 / PAV-R1002     | PAV-T4301 / PAV-T4302<br>PAV-R4301 / PAV-R4302                    | PAV-T4602 / PAV-T4603<br>PAV-R4602 / PAV-R4603                    |
| RESOLUTION          | 1920 x 1080  | 3840 x 2160 P30   | 3840 x 2160 P60   |
| HDMI                | 1.4a input   | 2.0a input  | 2.0b input  |
| HDCP                | 1.4<br>2.2 (Optional)                              | 1.4<br>2.2 (Optional)   | 2.2 (Compatible 1.4)  |
| MOUSE ROAMING       | Support  |   |   |
| IR FREQUENCY        | 30K to 50K   |   |   |
| RS232 SPEED RATE    | 300 to 115200 bps                                  |   |   |
| GPIO OUT            | 2 (0-3.3V)   |   |   |
| GPIO IN             | 1 (0-3.3V)   |   |   |
| NETWORK             | 1G / RJ45<br>Suggest<br>CAT5E, CAT6, CAT7 cable    | 1G / RJ45<br>Suggest<br>CAT5E, CAT6, CAT7 cable<br>(POE Optional) | 1G / RJ45<br>Suggest<br>CAT5E, CAT6, CAT7 cable<br>(POE Optional) |
| FIBER               | Optional   | Optional  | Optional  |
| POWER               | DC 5-19V / 8W<br>Without USB & Module Power Supply |   |   |
| MODULE POWER OUT    | 5V / 500mA   |   |   |
| STORAGE TEMPERATURE | -30 to 70°C  |   |   |
| WORKING TEMPERATURE | -10 to 60°C  |   |   |
| SIZE                | 220x102x30 mm                                      | 220x102x30 mm   | 225x118x31 mm   |
| WEIGHT              | 540g (Standard)                                    | 540g (Standard)   | 580g (Standard)   |

2

MULTIVIEWER

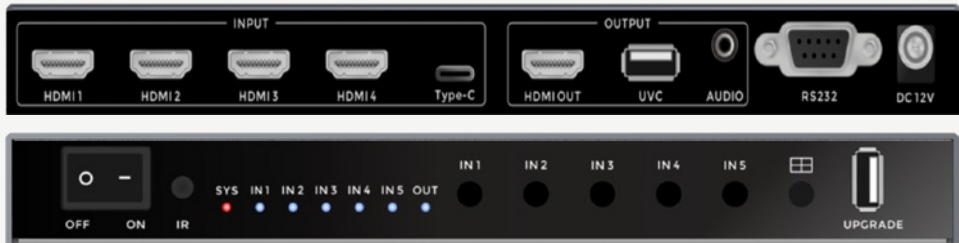
PAV-V9301



SPECIFICATION DESCRIPTION

- 9 HDMI Inputs to HDMI Output
  - Control through RS-232 or RJ45
  - Customized Display mode. E.g., Picture-in-picture, Independent Display, Windows overlap or stacking, Roaming, Free Size, Free Positioning
  - Free setting for 1, 2, 3, 4, 6, 8, 9 Display Segmentation
  - Seamless Switch
  - Independent Display Button Switch
- Maximum 16 modes save in devices
  - Support Max. 1920x1080 Input, Compatible 800x600, 1024x768, 1280x1024, 480i/p, 576i/p, 720p, 1080i/p
  - Support Max. 3840x2160 Output. Customized Output 1920x1080, 1680x150, 1600x1200, 1400x900, 1366x768, 1280x1024, 1280x720, 1024x768
  - Support Transparency Adjustment
  - Support Customized Mode Looping

PAV-V5601



SPECIFICATION DESCRIPTION

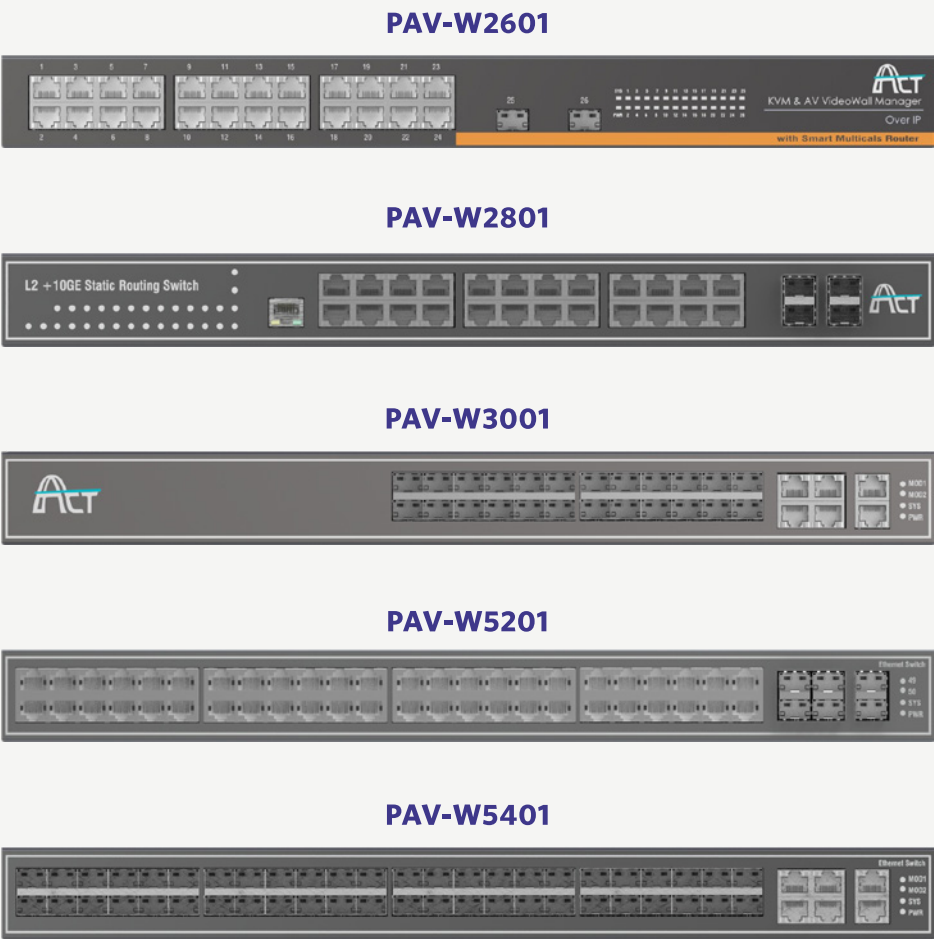
- One display screen can simultaneously view four signals, greatly improving efficiency.
  - Point-to-point display, no loss of frame rate, supports 4K60 UHD input and output.
  - Supports control methods such as buttons/IR/RS232.
- Supports seamless and rapid switching between five signals.
  - Supports direct input of multiple signals into software conferencing and live broadcasting software.
  - The four screens can be defined to display in a customized way.

MODEL COMPARISON

MULTIVIEWER

| MODEL               | PAV-V9301  | PAV-V5601   |
|---------------------|--|---|
| INTERFACE           | Input —— HDMI x9 (HDMI1.4a, DVI1.0)<br>Output —— HDMI x1<br>Other I/O —— RS-232, RJ45 x1 | Input —— HDMI x4 (HDMI2.0)<br>Type-C x1<br>Output —— HDMI x1<br>UVC x1<br>Other I/O – RS-232, Analog Audio x1 |
| BUTTONS             | Panel Button x12<br>Power Button x1  | Panel Button x6<br>Power Button x1  |
| LED INDICATOR       | HDMI input Button x9<br>Setting Button x3<br>HDMI Status x9<br>LED Display Panel x1      | SYS x1<br>HDMI Status x4<br>Type-C Status x1<br>Output x1   |
| RESOLUTION          | Output Max. 3840 x 2160  | 3840 x 2160 P60   |
| STORAGE TEMPERATURE | -40 to 70°C  | -20 to 70°C   |
| WORKING TEMPERATURE | -15 to 55°C  | 0 to 45°C   |
| HUMIDITY            | 5 to 90%<br>( non-condensing )   | 10 to 90%<br>( non-condensing )   |
| POWER               | 100V-240V AC   | 12V 1.5A DC   |
| WEIGHT              | 3.1 kg   | 0.7 kg  |
| DIMENSION           | 445 x 360 x 45 mm<br>482 x 360 x 45 mm (with Mounting)                                   | 240 x 124 x 28 mm   |





SPECIFICATION DESCRIPTION

- Support 4K transmission
  - Support KVM and Video Wall Setup
  - Support up to 32 control boxes, with total 1536 ports
  - Smart Transmission Control
- Support Telnet, http and RS-232 – 2nd Development
  - Low Latency(Mouse, Video, Audio)
  - Visual Lossless Compression
  - Mouse Roaming(Windows, Linux, Mac)

MODEL COMPARISON

HDMS

| Model                                | PAV-W2601               | PAV-W2801  | PAV-W3001  | PAV-W5201 | PAV-W5401 |
|--------------------------------------|-------------------------|------------|------------|-----------|-----------|
| RJ45(10/100/1000M)                   | 24                      | 24         | /          | 48        | /         |
| SFP (100/1000M)                      | 2                       | 4          | 24         | /         | 48        |
| COMBO 1G PORT                        | X                       | 4 (SFP)    | 6(CU)      | 4(SFP)    | 6(CU)     |
| SFP+ 10G                             | n/a                     | 2          |            |           |           |
| 10G EXTENSION CARD (SFP+*2)          | n/a                     | 1          |            |           |           |
| CONSOLE(RS232)                       | RJ45                    | DB9        |            |           |           |
| BACKPLANE BANDWIDTH                  | 56 Gbps                 | 128 Gbps   |            | 176 Gbps  |           |
| REAL TIME PREVIEW                    | Yes                     |            |            |           |           |
| UP-PORT TRANSFER CONTROL             | Yes                     |            |            |           |           |
| EXTENSION LIST                       | Yes                     |            |            |           |           |
| LLDP (CONNECTED DEVICES)             | Yes                     |            |            |           |           |
| IGMP SNOOPING                        | Yes                     |            |            |           |           |
| SNMP SETTING                         | Yes                     |            |            |           |           |
| RSTP PORT STATUS                     | Yes                     |            |            |           |           |
| TRANSFER VOLUME MONITOR AND ANALYSIS | Yes                     |            |            |           |           |
| NETWORK CABLE DISTANCE DETECTION     | Yes                     |            |            |           |           |
| CLI (THIRD PART CONTROL)             | RS232 / Telnet / HTTP   |            |            |           |           |
| MANAGE MODE                          |                         |            |            |           |           |
| DIMENSION (MM)                       | 442x223x44              | 442x250x44 | 442x300x44 |           |           |
| WEIGHT                               | 2.5 kg                  | 3.9 kg     | 4.1 Kg     | 4.2 kg    | 4.0 kg    |
| POWER                                | 100-240 VAC<br>50~60 Hz |            |            |           |           |

# WHY SHOULD SITUATION ROOMS CHOOSE ProAV



?

ProAV is widely used in situation rooms to provide high-quality, reliable audio and video solutions for mission-critical operations.

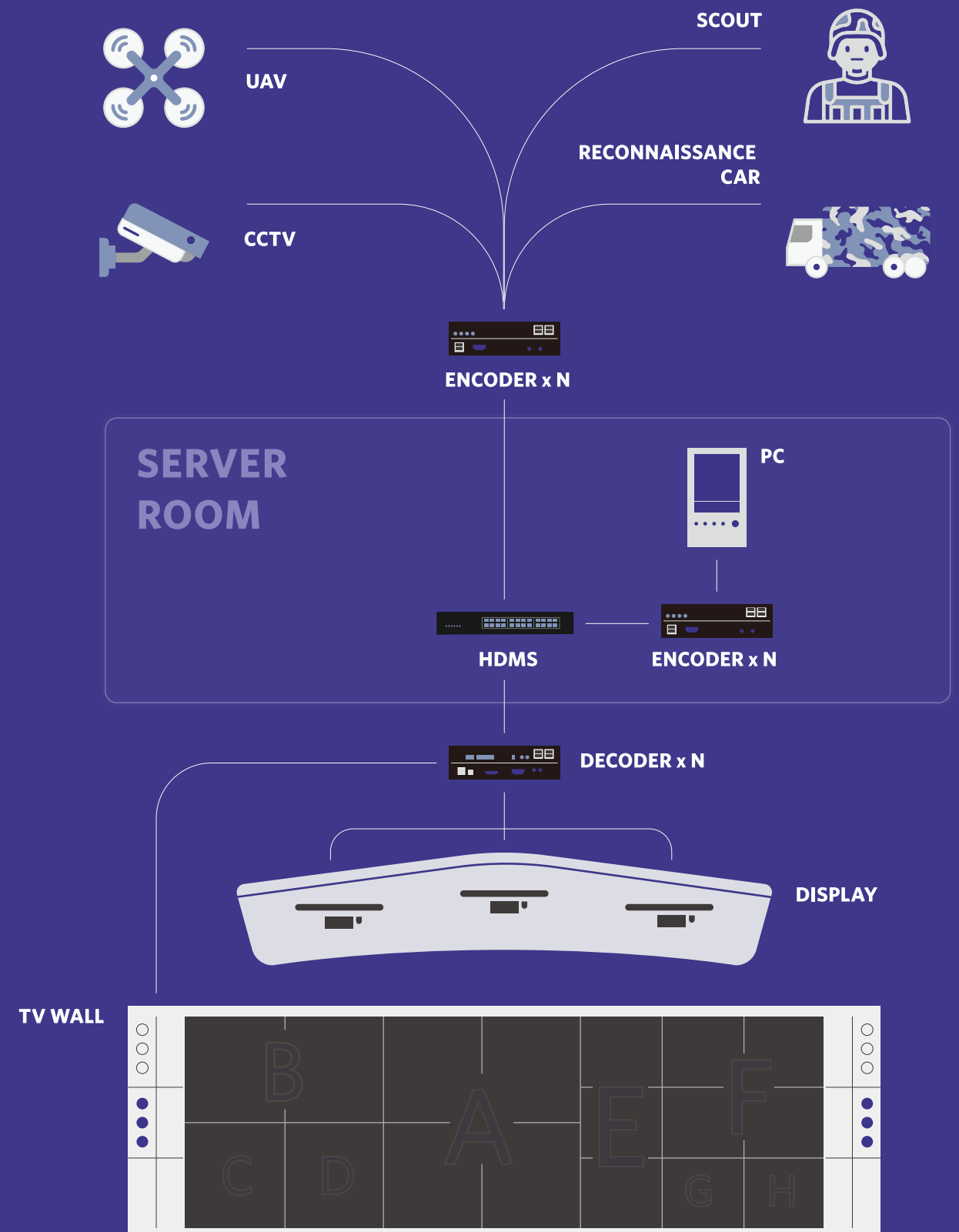
Situation rooms are often used by organizations such as government agencies, military organizations, and emergency response teams to monitor, analyze, and respond to events in real-time. These events could include natural disasters, terrorist attacks, or other emergency situations.

ProAV systems are essential in situation rooms because they allow personnel to receive and analyze critical information in real-time. These systems can include large-format displays, video walls, projectors, and other video solutions that allow multiple feeds to be displayed simultaneously.

In addition to providing high-quality audio and video solutions, ProAV systems can also integrate with other technologies used in situation rooms, such as computer networks, data analytics software, and other specialized tools. This integration allows personnel to access and analyze data from multiple sources, providing them with a comprehensive view of the situation at hand.

Overall, ProAV systems are essential for situation rooms because they provide high-quality, reliable solutions that enable personnel to effectively monitor, analyze, and respond to events in real-time.

## OUR SOLUTIONS SITUATION ROOMS



# HOW DOES ProAV INTEGRATE WITH CASINOS

?



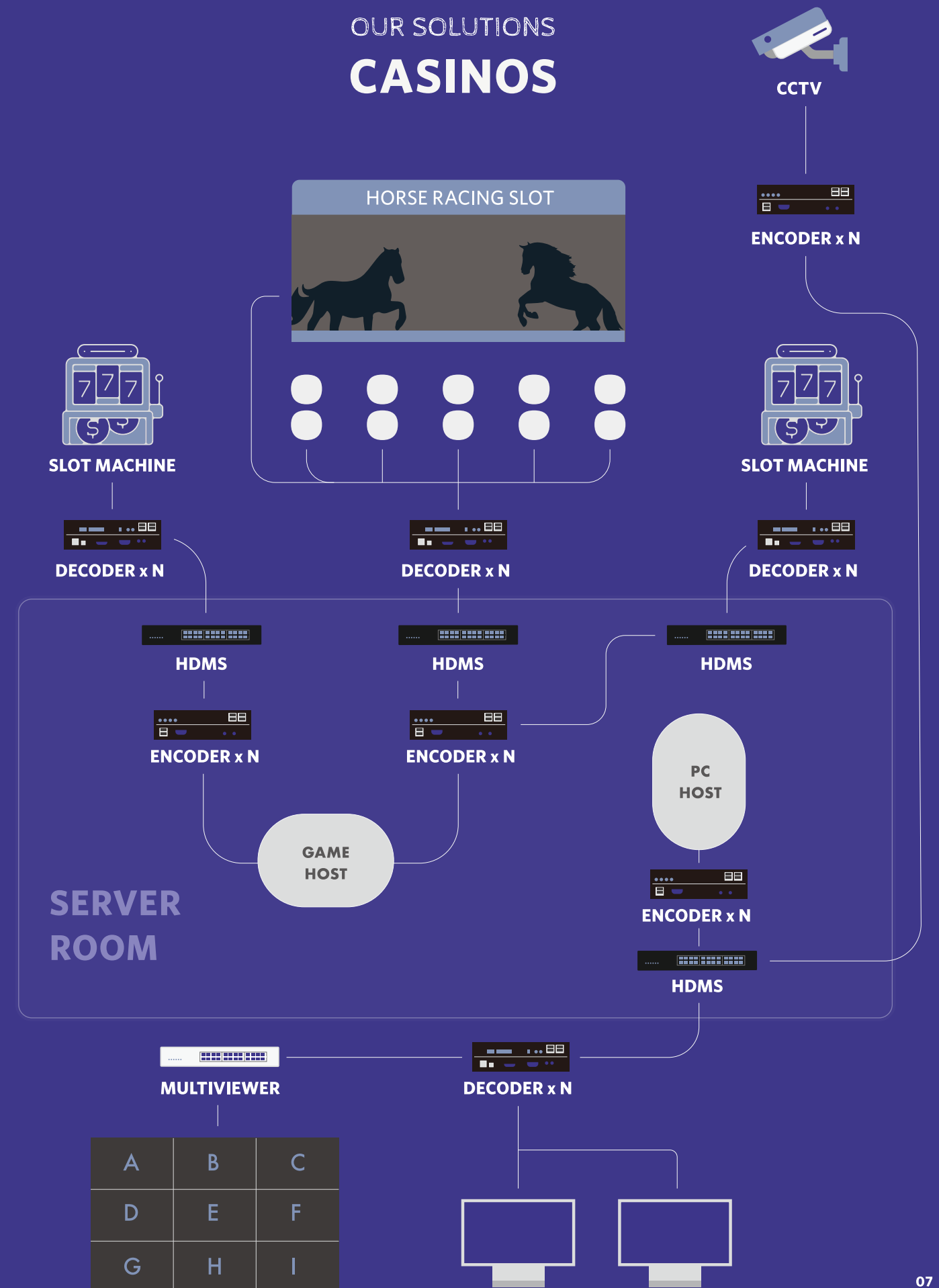
4K encoder and decoder technology is becoming increasingly popular in the casino industry, as it allows for high-quality video streaming and enhanced gaming experiences. The casino installed a large TV wall in their sportsbook area, which displayed multiple games and events simultaneously. The TV wall was made up of multiple high-definition screens, which were connected to a multi-viewer system.

The casino installed 4K encoders in their slot machines, which captured high-quality video footage of the slot machine's gameplay. The encoders converted the analog video signals into digital signals, which were then transmitted over an IP network to the casino's central server.

The 4K encoder and decoder technology also allowed the casino to display promotional content and advertisements on the high-definition displays. This provided additional revenue streams for the casino, while also promoting upcoming events and offers to their customers.

In conclusion, 4K encoder and decoder technology has proven to be an effective solution for casinos looking to enhance the gaming experience of their customers. Its ability to display promotional content and advertisements also provides additional revenue streams for casinos, making it a valuable asset in the gaming industry.

## OUR SOLUTIONS CASINOS





# ACTUAL CASE

## CONFERENCE ROOM

01



ENCODERS X 6  
DECODERS X12  
HDMS X 1

## FISHERIES AGENCY

02



ENCODERS X 1  
DECODERS X 9  
HDMS X 1

## DEPARTMENT STORE

03



ENCODERS X 6  
DECODERS X 6

## GOVERNMENT

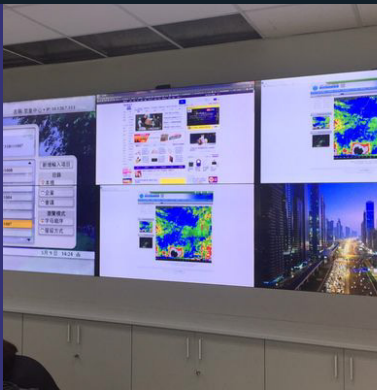
04



ENCODERS X 2  
DECODERS X 32  
HDMS X 1

## CIVIL AVIATION ADMINISTRATION

05



ENCODERS X 4  
DECODERS X 8  
HDMS X 1

## MONITORING ROOM

06



ENCODERS X 3  
DECODERS X 6  
HDMS X 1

# CONTACT INFORMATION

|                                 |           |  |
|---------------------------------|-----------|--|
| BASIC<br>CONTACT<br>INFORMATION | Tel       | +886-2-25595216  |
|                                 | Fax       | +886-2-25595218  |
|                                 | Address   | 2F-3, No 110 Sec. 1, YanPing N. Rd. Datong Dist., Taipei City 10341, Taiwan  |
|                                 | Email     | sales@actpower.com.tw  |
| WEBSITE<br>&<br>SOCIAL MEDIA    | Website   | www.actpower.com.tw/   |
|                                 | FB        | ACT Power Taiwan Ltd (www.facebook.com/ACTPOWERTaiwan)   |
|                                 | YouTube   | ACT POWER TAIWAN CO., LTD (www.youtube.com/channel/UC4gM_S4EP_EiAK84taEEFgQ)   |
|                                 | LinkedIn  | ACT POWER Taiwan Co., Ltd. (www.linkedin.com/company/act-power-taiwan-ltd./)   |
| DISTRIBUTOR<br>INFORMATION      | India     | <b>Thirdwave Ruggedtech Pvt. Ltd.</b><br>+91-932-8283304<br>info@thirdwaveruggedteck.com<br>www.thirdwaverugged.com<br>B-4, Chaitanya, opp. Maradia Plaza, Ellisbridge, Ahmedabad-380006, Gujarat, India.                                |
|                                 |           | <b>VARISIS Advanced Engineering &amp; Software Technologies India Pvt. Ltd.</b><br>+91-120-4213659<br>info@varisis.in<br>www.varisis.in<br>Plot No-06, Block-B, Sector-58, Phase_III, Noida-201301, Uttar Pradesh-, Ind                  |
|                                 |           | <b>Univa Technologies Pvt. Ltd</b><br>+91-802-22290038<br>info@univatech.com<br>www.unified.co.in<br>Jains Heights-Solus , 3rd Floor, Unit G & E, 1st Cross, J.C. Road, (Opp. Jain College),Sampangi Rama Nagar, Bangalore–560027, India |
|                                 |           | <b>KJ ENERGY PRODUCTS PRIVATE LIMITED</b><br>+91-080-29515133<br>Sales@kjenergy.in<br>No. 229, 11th Main, 2nd cross, 3rd Phase, Peenya Industrial Area I Bangalore 560058  |
| Singapore                       | Singapore | <b>Universel Tech Solutions Ltd.</b><br>+91 9555751100<br>utsinfo@universeltechsolutions.com<br>http://universalttech-solutions.com/<br>#77, 7th Main, vinayaknagar, bagalur cross, yelahanka BANGALORE 560063                           |
|                                 |           | <b>Hornbill Rugged Networks Pte. Ltd.</b><br>+65 6444 9434<br>info@hornbillrugged.com<br>www.hornbillrugged.com<br>41 Kallang Pudding Road, #04-03B, Golden Wheel Building, Singapore, 349316  |
|                                 |           | <b>Miltec Rugged Computer Solutions LLC</b><br>+971 4 3795910<br>info@milcomputing.com<br>Milcomputing.com<br>#301B, Al Nakheel Building, AL Karama, PO Box-126830, Dubai, UAE   |
|                                 |           | <b>Project-X Technologies Ltd.</b><br>+64 9 3030198<br>mehome.co.nz@gmail.com<br>154 Queen Street, Auckland CBD, Auckland 1010   |

MISSION CRITICAL

TOGETHER  
BEYOND  
THE  
SUMMIT





SUSTAINABLE DEVELOPMENTAL PLAN

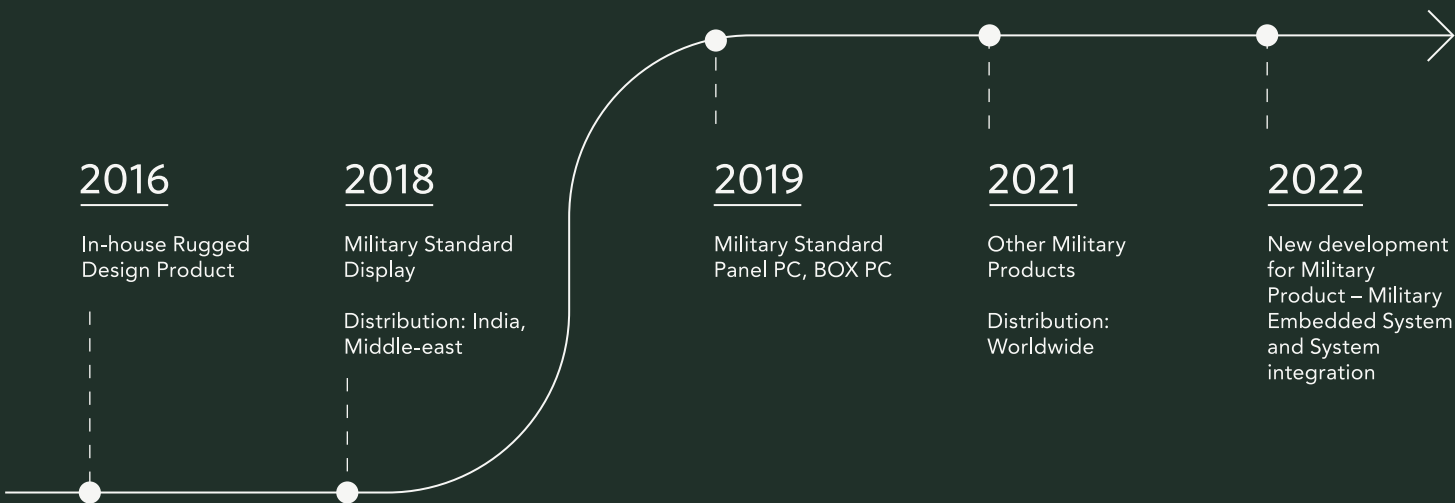
ACT POWER is committed to being one of the leading technology service providers around the world. We are constantly looking for opportunities to create value for customers and create mutual prosperity and mutual benefits.

SOCIAL RESPONSIBILITY  
&  
ENVIRONMENTAL POLICY

We are committed to maintaining ecological balance, promoting corporate social responsibility, promoting green production, actively participating in charity activities, paying attention to vulnerable groups, promoting the physical and mental health and safety of employees, and creating an open business stage for talents to fully develop.

|  |      |
|--|------|
| ACT MILITARY PRODUCT DEVELOPMENT HISTORY                         | / 01 |
| WHY ACT POWER - FOUR REASONS TO CHOOSE THE ACT                   | / 01 |
| —— DESIGN FOR MILITARY STANDARD FROM THE PROSPECTIVE OF CUSTOMER | 02   |
| —— SUNLIGHT READABLE - Ultra High Brightness                     | 03   |
| —— EXTREME ENVIRONMENT APPLICATION - Smart Heater                | 04   |
| —— CUSTOMIZATION DESIGN FOR APPLICATION                          | 05   |
| MILITARY LCD MODULE  | / 06 |
| MILITARY LCD MODULE WITH OPEN FRAME DESIGN                       | / 06 |
| HIGH LEVEL POWER SUPPLY DC/DC CONVERTER                          | / 07 |
| 19” 3U RUGGED RACK MOUNT SERVER                                  | / 07 |
| AD BOARD, CABLES AND OTHER ACCESSORIES                           | / 08 |

# ACT MILITARY PRODUCT DEVELOPMENT HISTORY



Programmable Temperature and Humidity Chamber

## CAPABILITIES FOR PRODUCTS DEVELOPMENT, MANUFACTURE AND SOURCE

ACT has our own in-house design team, including members from both electronics engineering and mechanical engineering backgrounds. Our team has been experienced in researching and developing products for military application.

We love to keep close relationship with our customer. Based on the deep knowledge from the IPC industry towards military application. We are not only aware of standards of military compliance, but also think from the perspective of the end-user about putting ourselves into their application scenario. Through our Design to Order Service (DTOS), we can provide a suitable solution for our customer in an efficient and accurate way.

ACT has our own manufacturing house for the NCT, die casting for sample & mass production. With respect to military standard products, our team are professional in EMI Mesh and Optical Bonding, Rugged Design, EMI/EMC design and solution.

Since we are familiar with the military display industry, ACT has a very stable source of display panels, panel glass, EMI shielding material supply.

## QUALITY ASSURANCE VALIDATION CENTER

ACT always cares about the quality of products. ACT has set up an in-house validation center. It helps us to validate the performance of the design, and ensure the quality of products delivered. For the EMI/EMC testing, it will be performed in an ISO-certified laboratory. For environmental compliance, for example, temperature, humidity, shock, vibration, etc., we do our design validation, incoming/ outgoing quality check at our facility.

WE MAKE PRODUCTS THAT MEET YOUR NEEDS



WHY

ACT

TAIWAN

FOUR REASONS TO CHOOSE ACT

# 1

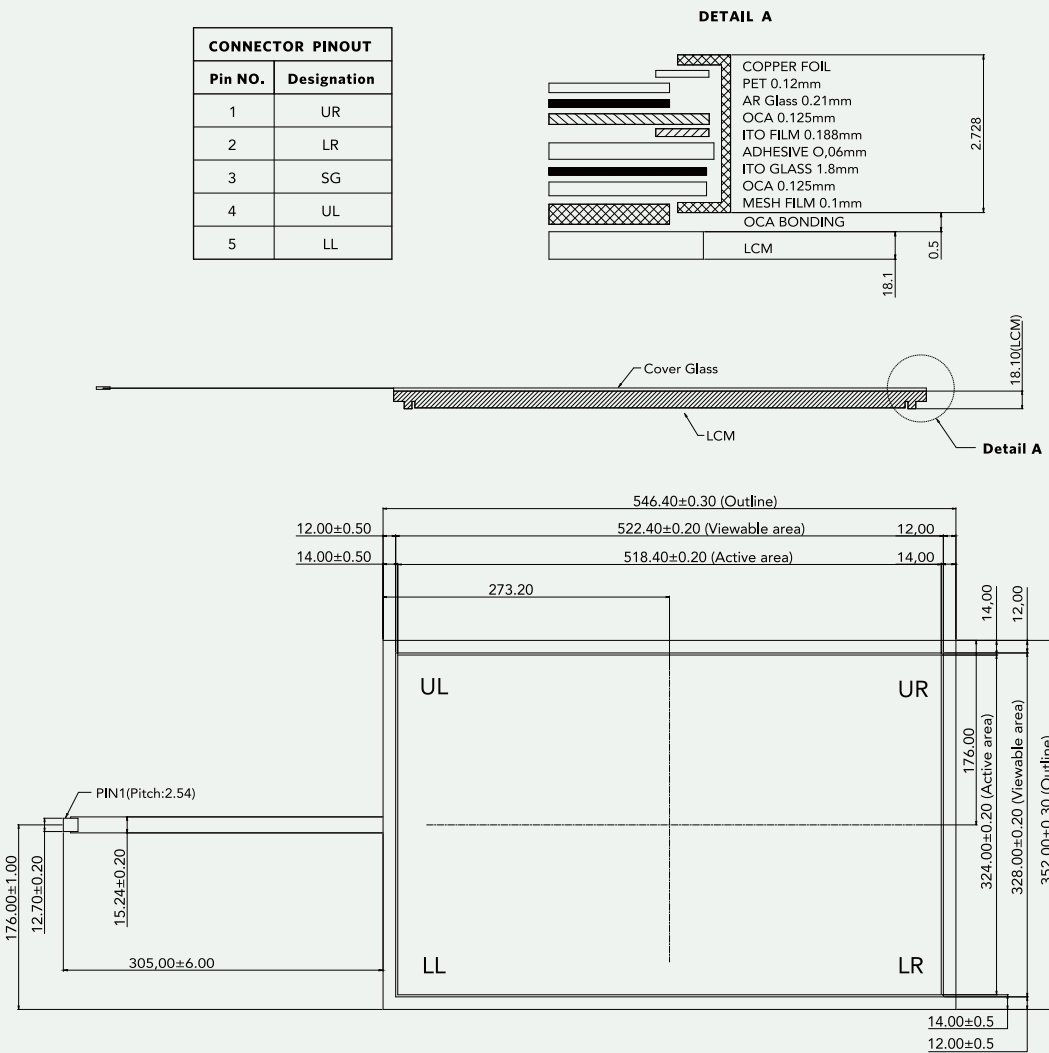
## DESIGN FOR MILITARY STANDARD FROM THE PROSPECTIVE OF CUSTOMER



MIL-STD-461 and MIL-STD-810 are the basic standards for military products. The products should have high durability and reliability as well. ACT military products are designed to meet different military standards. With our experience in the military industry, we are capable of using different types of materials, e.g., EMI copper table, gasket, stirp, texture and processing method to achieve the requirements cost-effectively.

We understand that rugged design starts from every component in the device. For example, screw selection, material processing, heat conduction setup, component integration, etc. Our know-how can always provide a suitable solution to the customer's application. The product should be able to withstand impact, vibration, temperature extremes, and exposure to moisture and other environmental factors.

For instance, when we design the product to meet MIL-STD-461 and MIL-STD-810, ACT can strike a balance between cost and performance. From the material section, towards the assembling difficulties and application scenario, we can always give key components or suggestions for the integration.



### CASE STUDY

## TOUGHENED GLASS OPTICAL BONDING SLM-MR240K-E

### CUSTOMER REQUIREMENT

Extra glass on the 24" resistive touch display to enhance the hardness of the glass and protect the resistive touch damaged from outer force.

### DIFFICULTY

- a Adding an extra glass on the resistive touch could affect the touch response and AR/AG performance.
- b The greater the size of the glass, the harder it is to be handled in terms of manufacturing and bonding process, considering the glass has to be thin enough that touch performance cannot be affected.

### SOLUTION

ACT designs a thin AG glass on top of the touch glass. ACT developed an in-house technique to bond the thin glass by OCA and optical bonding.

### ACHIEVEMENT

- 01 Maintain the same resistive touch performance as without extra glass on the resistive touch glass.
- 02 Bring the AG feature into the glass on top, enhancing the AG performance.
- 03 Protect the resistive touch glass by 6H thin Glass



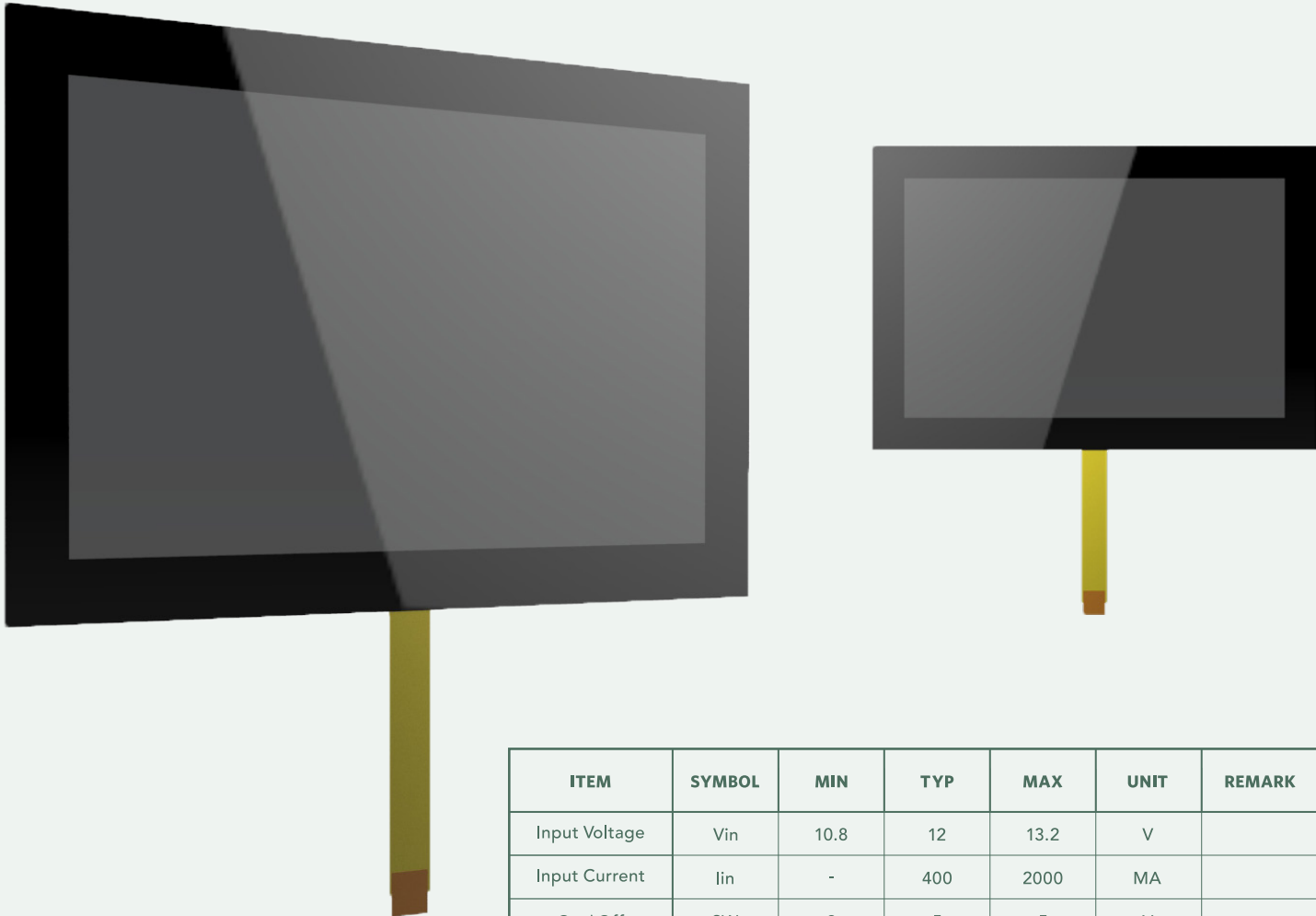
SLM-MR240K-E

# SUNLIGHT READABLE - Ultra High Brightness

When we consider the outdoor or vehicle application, sunlight readable feature should be one of the basic requirements. Especially for military products, no customer would like to find the display unseeable under sunlight.

In some cases, the original panel was only able to support 350 nits brightness. After optical bonding, the brightness could take up to a 30% discount. ACT has been experiencing high brightness modification. We have the know-how to use the driver board to boost the panel brightness, adding extra LED backlight to the panel, or even customizing a new panel to meet the requirement.

In addition, the higher brightness of the panel will generate greater heat at the same time because of the power consumption. With our design team, we are able to provide a suitable solution to assist in handling the heat spread even in large-sized panels.



| ITEM          | SYMBOL | MIN  | TYP | MAX  | UNIT | REMARK  |
|---------------|--------|------|-----|------|------|---------|
| Input Voltage | Vin    | 10.8 | 12  | 13.2 | V    |         |
| Input Current | Iin    | -    | 400 | 2000 | MA   |         |
| On / Off      | SW     | 2    | 5   | 5    | V    |         |
| Fregrency     | F      | 280  | 330 | 360  | KHz  |         |
| H.V load      | Vload  | -    | 18  | 68   | VDC  | ADJ:0V  |
| H.V open      | Vopen  | -    | 12  | 68   | VDC  | NO LOAD |
| Efficiency    | 9      | -    | 95  | -    | %    |         |

## CASE STUDY

# HIGH-BRIGHTNESS SLM-MR101M-E

### CUSTOMER REQUIREMENT

As a key component for military tablet application, the customer requires a 10.1 inch LCD module with low power consumption. The minimum resolution requirement is Full HD.

### DIFFICULTY

Most 10.1” panels in the market cannot achieve 4 require-ments at the same time.

- a to be a military display in terms of the structure and electronic standards
- b With high brightness, after optical bonding, 700 nits
- c Support Full HD resolution
- d With low power consumption

### SOLUTION

ACT has modified a panel on the driver board and LED modification to meet all the above requirements.

### ACHIEVEMENT

- 01 Panel with reliable structure and electronic performance. Wide Working temperature from -20°C to 70°C
- 02 Before bonding, the panel can support 1000 nits brightness. The finishing product can support up to 700+nits after optical bonding
- 03 Support 1920x1200 resolution
- 04 Low power consumption: <6W in typical operation
- 05 Extra: black silk print on the top of the panel glass, considering the front mount assembled in the customer’s tablet design

### DRIVER BOARD SPECIFICATION

| PARAMETER            |                | SYMBOL | VALUES |     |        | UNIT | NOTES  |
|----------------------|----------------|--------|--------|-----|--------|------|--------|
|                      |                |        | Min.   | TYP | MAX    |      |        |
| Power Supply Voltage |                | VOD    | 3.0    | 3.3 | 3.6    | V    |        |
|                      |                | VRP    |        |     | 300    | mV   | Ripple |
| Power Supply Current |                | IDO    | -      | 300 | 360    | mA   | Note 1 |
| Power Consumption    |                | PLCD   | -      | 1   | 1.2    | W    | Note 2 |
| Rush Current         |                | IRUSH  | -      | -   | 3.0    | A    |        |
| CMOS Interface       | Input Voltage  | VIH    | 2.7    |     | 3.30.5 | V    |        |
|                      |                | VIL    | 0      |     | 3.3    | V    |        |
|                      | Output Voltage | VOH    | 2.7    |     | 0.5    | V    |        |
|                      |                | VOL    | 0      |     |        | V    |        |

# 3

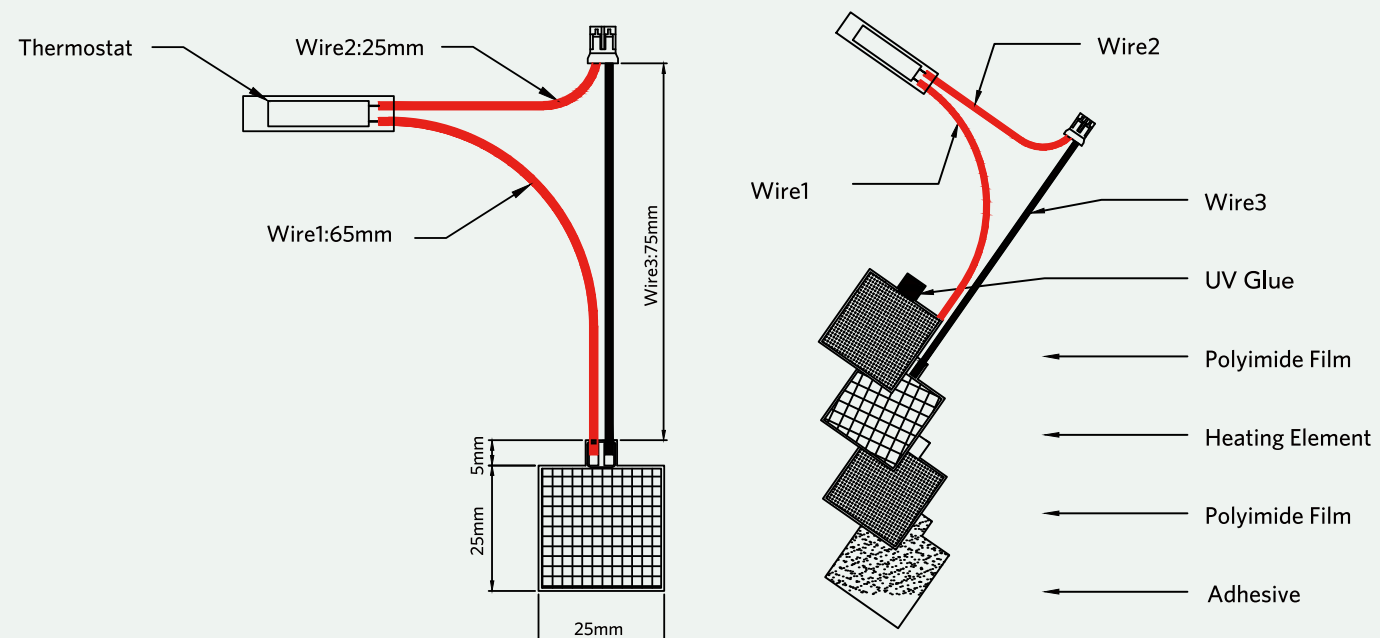
## EXTREME ENVIRONMENT APPLICATION - Smart Heater

Military standard products should be reliable and able to perform consistently and predictably in all circumstances. Nowadays, many ICs and components provide a wide operating temperature. Like for some PCBAs, they are able to support -40 °C to 85 °C in operation. However, the LED Panel has another story.

Due to the nature of LED, most panels cannot be boosted up in low temperature. i.e., <-30 °C. At the same time, especially in military applications, it is common that a military product has to start working in an extremely low temperature environment.

In ACT products, especially in panel design, we always use a smart heater for the requirement to work below -20 °C.

### HEATER DESIGN



## ADVANTAGES

### A

#### FAST WARM UP ON SPECIFIC COMPONENTS

For a common heater, it aims to boost the overall temperature in the structure. It delays the operation as we have to wait until the whole environmental temperature is raised. For our design, the heater is assembled as part of the component. For example, at the back of the panel. The heat conduction is through direct contact. Therefore, the device can be warmed up within a very short period of time.

### B

#### STRUCTURAL DESIGN

ACT Heater size can be customized according to the components and it is flexible to integrate into the system. Also, when we need to consider the shock & vibration requirements, the heater pad is a paste form heater. It could be installed easily and firmly. After the electronics components analysis, we could assemble the heater on to the core part of the component. It does not greatly affect the overall thickness and occupy too much space in the structure.

### C

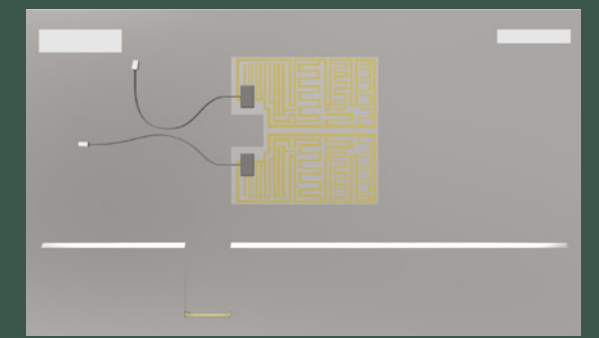
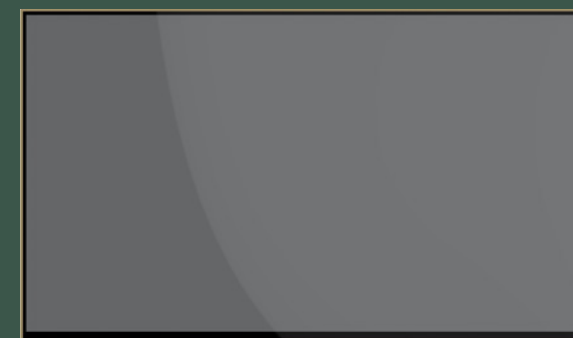
#### WIDE RANGE COMPATIBILITY OF POWER CONSUMPTION

Power supply voltage could be 1 to 240V AC/DC input. It could be compatible with different system integration.

### D

#### EASY SETUP

The heater itself is controlled by a sensor. The operation runs automatically. For example, once the thermostat sensor detects the environmental temperature that is below 0°C, the heater will start operation to warm up the device.





# 4

## CUSTOMIZATION DESIGN FOR APPLICATION

The ability to customize military standard products requires a flexible design that can accommodate modifications and additions without compromising the product's performance or reliability.

ACT has our own engineer team to develop the key components or final product into customers' application. Our engineering team includes both mechanical engineers and electronic engineers to co-work on the product.



## STRENGTH OF ACT CUSTOMIZATION (DTOS)

### A

#### FAST DEVELOPMENT TIME

ACT understands that customers require a high level of validation in military products. While having an in-house team for the product design, we are able to provide the solution efficiently. We would also like to provide a one-stop solution through our research and development team ability. It reduces the time for debugging and enhancement.

### B

#### STRONG LINKAGE IN MECHANICAL AND ELECTRONICAL INTEGRATIONS.

Mechanical design is not the barrier of the product. It is assistance for the product. For example, today, we need to design a fan-less box PC using the Intel i7 Generation 10 CPU as required. Starting from the motherboard layout, we tried to put all the heat-generating components to be separated. However, it is unavoidable that the heat generation from the CPU will be too high. After heat simulation, our mechanical team will bring a head conduction solution to the product.

### C

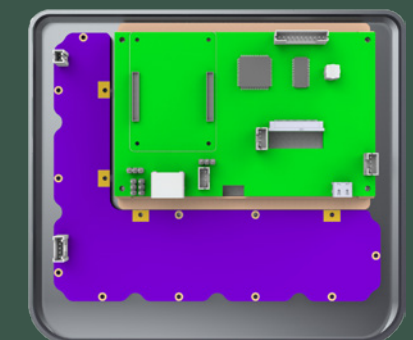
#### WIDE CUSTOMIZED OPTIONS

Military products include various features in different applications. For example, extreme high reliability in military servers, which may require redundancy design in both power supply and storage backup, or water-proof and EMI protection at the same time in outdoor usage. According to our team's know-how and experience in this industry for many years, we can always provide a suitable solution.

### D

#### SYSTEM INTEGRATION FOR MORE POSSIBILITIES

Mission critical is one of the main series of ACT products, but ACT has more than that. With our development in other series, we can assist our customers to explore more possibilities in customers' applications. For example, we can integrate our PRO AV products to build up the situation room or monitoring center in the military station.



MILITARY LCD  
MODULE

| MODEL                             | SLM-MR2400-E      | SLM-MN064M-E  | SLM-MN064M1-E | SLM-MN084M-E  | SLM-MN084M1-E | SLM-MR084M-E     | SLM-MR084M2-E   | SLM-MR101M-E    | SLM-MC104M-E           |
|-----------------------------------|-------------------|---------------|---------------|---------------|---------------|------------------|-----------------|-----------------|------------------------|
| Display Size                      | 5"                | 6"            | 6"            | 8.4"          | 8.4"          | 8.4"             | 8.4"            | 10.1"           | 10.4"                  |
| Resolution                        | 720 x 1280        | 1024 x 768    | 1024 x 768    | 1024 x 768    | 1024 x 768    | 1024 x 768       | 1024 x 768      | 1920 x 1200     | 1024 x 768             |
| Luminance                         | 700 cd/m2         | 800 cd/m2     | 800 cd/m2     | 800 cd/m2     | 800 cd/m2     | 700 cd/m2        | 700 cd/m2       | 700 cd/m2       | 700 cd/m2              |
| Contrast Ratio                    | 800:1             | 800:1         | 800:1         | 800:1         | 800:1         | 800:1            | 800:1           | 900:1           | 1000:1                 |
| No. of Color                      | 16.7M             | 16.7M         | 16.7M         | 16.7M         | 16.7M         | 16.2M            | 16.2M           | 16.7M           | 16.1M                  |
| Touch                             | Capacitive Touch  | No Touch      | No Touch      | No Touch      | No Touch      | Resistive Touch  | Resistive Touch | Resistive Touch | Capacitive Multi Touch |
| Touch Interface                   | I2C               | -             | -             | -             | -             | USB              | USB             | USB             | USB                    |
| AG/AR Strengthen Glass            | Yes               | Yes           | Yes           | Yes           | Yes           | Yes              | Yes             | Yes             | Yes                    |
| EMI Mesh + Optical Bonding        | Yes               | Yes           | Yes           | Yes           | Yes           | Yes              | Yes             | Yes             | Yes                    |
| Operating Temperature             | -20°C to 70°C     | -40°C to 80°C | -40°C to 80°C | -40°C to 85°C | -40°C to 80°C | -40°C to 85°C    | -40°C to 85°C   | -20°C to 70°C   | -30°C - 80°C           |
| Storage Temperature               | -30°C to 80°C     | -40°C to 80°C | -40°C to 80°C | -40°C to 90°C | -40°C to 90°C | -40°C to 90°C    | -40°C to 90°C   | -30°C to 80°C   | -30°C - 80°C           |
| MIL-STD-461E/F shock compliance   | Yes               | Yes           | Yes           | Yes           | Yes           | Yes              | Yes             | Yes             | Yes                    |
| MIL-STD-810D shock compliance     | Yes               | Yes           | Yes           | Yes           | Yes           | Yes              | Yes             | Yes             | Yes                    |
| MIL-STD-810E vibration compliance | Yes               | Yes           | Yes           | Yes           | Yes           | Yes              | Yes             | Yes             | Yes                    |
| Additional information            | With bezel option |               | Panel Mount   |               | Panel Mount   | Customized Glass |                 | Panel Mount     |                        |

| MODEL                             | SLM-MR104M-E    | SLM-MR150M-E    | SLM-MR185M-E  | SLM-MR213M1-E   | SLM-MR215M-E    | SLM-MR230M-E    | SLM-MR240M-E    | SLM-MN270M-E  | SLM-MC270M1-E          |
|-----------------------------------|-----------------|-----------------|---------------|-----------------|-----------------|-----------------|-----------------|---------------|------------------------|
| Display Size                      | 10.4"           | 15"             | 18.5"         | 21.3"           | 21.5"           | 23"             | 24"             | 27"           | 27"                    |
| Resolution                        | 1024 x 768      | 1024 x 768      | 1920 x 1080   | 1600 x 1200     | 1920 x 1080     | 1920 x 1080     | 1920 x 1200     | 1920 x 1080   | 1920 x 1080            |
| Luminance                         | 700 cd/m2       | 700 cd/m2       | 700 cd/m2     | 900 cd/m2       | 700 cd/m2       | 700 cd/m2       | 900 cd/m2       | 1000 cd/m2    | 700 cd/m2              |
| Contrast Ratio                    | 1000:1          | 2500:1          | 1000:1        | 1800:1          | 3000:1          | 1000:1          | 1000:1          | 3000:1        | 1000:1                 |
| No. of Color                      | 16.1M           | 16.7M           | 16.7M         | 16.8M           | 16.7M           | 16.7M           | 1.07B           | 16.7M         | 16.7M                  |
| Touch                             | Resistive Touch | Resistive Touch | No Touch      | Resistive Touch | Resistive Touch | Resistive Touch | Resistive Touch | No Touch      | Capacitive Multi Touch |
| Touch Interface                   | USB             | USB             | USB           | USB             | USB             | USB             | USB             | -             | USB                    |
| AG/AR Strengthen Glass            | Yes             | Yes             | Yes           | Yes             | Yes             | Yes             | Yes             | Yes           | Yes                    |
| EMI Mesh + Optical Bonding        | Yes             | Yes             | Yes           | Yes             | Yes             | Yes             | Yes             | Yes           | Yes                    |
| Operating Temperature             | -30°C to 80°C   | -20°C to 55°C   | -20°C to 70°C | -20°C to 60°C   | -20°C to 50°C   | -20°C to 55°C   | -20°C to 60°C   | -20°C to 55°C | -20°C to 55°C          |
| Storage Temperature               | -30°C to 80°C   | -30°C to 70°C   | -20°C to 70°C | -20°C to 60°C   | -30°C to 70°C   | -20°C to 60°C   | -30°C to 70°C   | -30°C to 70°C | -30°C to 70°C          |
| MIL-STD-461E/F shock compliance   | Yes             | Yes             | Yes           | Yes             | Yes             | Yes             | Yes             | Yes           | Yes                    |
| MIL-STD-810D shock compliance     | Yes             | Yes             | Yes           | Yes             | Yes             | Yes             | Yes             | Yes           | Yes                    |
| MIL-STD-810E vibration compliance | Yes             | Yes             | Yes           | Yes             | Yes             | Yes             | Yes             | Yes           | Yes                    |
| Additional information            |                 |                 |               |                 |                 |                 |                 |               |                        |

REMARK

1.Above military LCD module is as a key components for the final products. To work with mentioned compliance, LCD kit has to be properly packed with bezel and back cover with required EMI-EMC and IP Gaskets to meet EMI/EMC and Environmental specifications

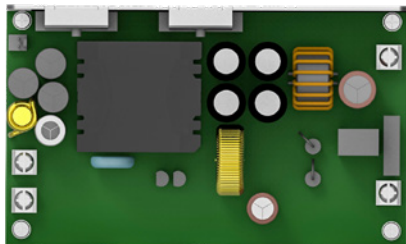
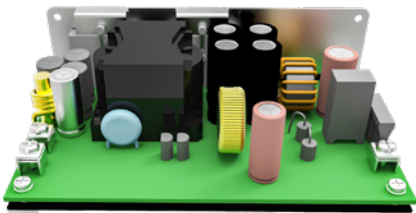
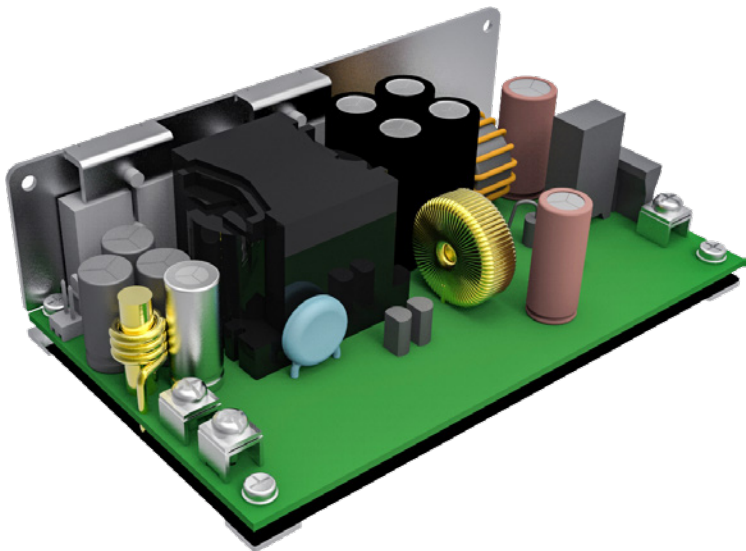
2.All the above LCD Module can be customized into LCD Kit, open frame or further design.

MILITARY LCD MODULE  
WITH OPEN FRAME DESIGN



| MODEL                 | SLM-MR2400-E                    |
|-----------------------|---------------------------------|
| Display Size          | 24 inch TFT LCD                 |
| Resolution            | 1920 x 1200                     |
| Luminance             | 300 nits (Upgradable)           |
| Touch                 | Resistive Touch                 |
| Touch Interface       | USB Touch                       |
| Touch Glass           | AG/AR Strengthen Glass          |
| Viewable Area         | 522.4 x 328 mm                  |
| Active Area           | 518.4 x 324 mm                  |
| Optical Bonding       | Yes                             |
| EMI Mesh              | Yes                             |
| Operating Temperature | -10°C to +60°C                  |
| Storage Temperature   | -20°C to +70°C                  |
| EMI/EMC               | Designed to meet MIL-STD-461E/F |
| Shock                 | Designed to meet MIL-STD-810D   |
| Vibration             | Designed to meet MIL-STD-810E   |
| Weight                | Approx. 13 kg                   |

HIGH LEVEL POWER SUPPLY  
DC/DC CONVERTER



| MODEL                                 | DC-0150800-M   |
|---------------------------------------|--|
| Input Range                           | 9 to 36VDC   |
| Input Current                         | Max load 16 Amp  |
| Output Voltage                        | 15 VDC   |
| Output Current                        | 8 Amp  |
| Operating Temperature                 | -30°C to +70°C   |
| Storage Temperature                   | -35°C to +75°C   |
| Dimension                             | 127 x 76.2 x 38 mm   |
| Safety                                | EN 62368   |
| EMC                                   | EN 55022 / EN 55032, CISPR 32 & FCC Part 15 ClassA/ Class B  |
| Further compliance                    | EMI shielding bracket design possible. Design to meet MIL-STD-461F and MIL-STD-1275D   |
| Input Reverse Polarity Protection     | When incorrect input polarity installation, the PSU will be not damaged and no output voltage.   |
| Overvoltage Protection                | For some reason the power supply fails to control itself, the build-in over voltage protection circuit will shut down the outputs to prevent damaging external circuits. |
| Short Circuit or Over Load Protection | The power supply will go into hiccup mode against short circuit or over load conditions, and will auto-recovery while fault conditions moved.                            |

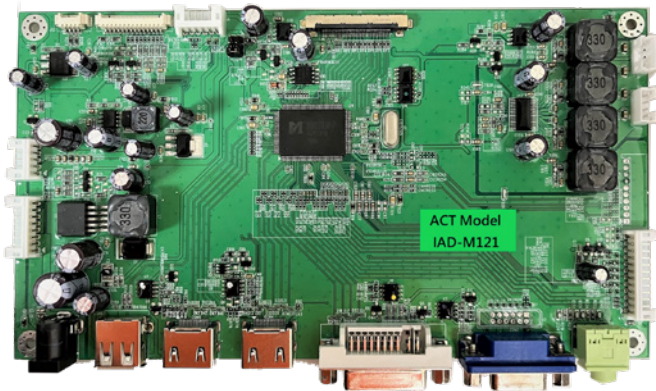
19" 3U RUGGED RACK  
MOUNT SERVER



| MODEL  | MIC-S0301   |
|--|---|
| Size   | 3U, 19" Rack Mount  |
| Processor  | Intel® Xeon® Gold 6230 Processor, 20-cores, 40-threads<br>2.1 to 3.7GHz Frequency<br>42MB Cache Memory  |
| Memory   | Total 128 GB ECC DDR4 2933MHz pre-mounted<br>Up to 256 GB capacitive each slots, 12 DIMM slots  |
| Graphics   | GEFORCE GT 710<br>2GB DDR3 64-bit graphics RAM  |
| Storage  | M.2 Interface: 4 PCIe 3.0 x4, RAID 0 & 1<br>Form Factor: 2242/2260/2280/22110<br>Key: M-Key<br>M.2 support RAID 0,1(up to RAID 5, 10), VROC key is required for Raid<br>2 TB M.2 SSD pre-mounted  |
| PCI-E  | 4 PCIe 3.0 x16,<br>3 PCIe 3.0 x8 (in x16 slot)  |
| I/O ports rear (MIL Circular)<br>With dust caps with cable secured | 4 x LAN with D38999 military connector<br>3 x USB2.0 with D38999 military connector<br>3 x RS232 with D38999 military connector<br>1 x HDMI with D38999 military connector<br>1 x DVI-D with D38999 military connector<br>1 x AC with D38999 military connector |
| I/O ports front Buttons  | 1 x On/ OFF button<br>1 x Reset button<br>2 x LED indicators  |
| Dimensions   | 3U – 17.5" x 24" x 3.5 (W x L x H)  |
| Power  | Power consumption: Approx. 200 Watts<br>Power supply: Dual 550W Redundant power supplies<br>Supports Automatic Power on State in BIOS<br>Power input: AC 90-264V input  |
| Operating Temperature  | 0°C to +55°C (Standard)<br>-30°C to +55°C (With Heater)   |
| Storage Temperature  | -40°C to +70°C (Note)   |
| Compliance   | Designed to meet MIL-STD-810G, MIL-STD-461E   |



AD BOARD, CABLES AND  
OTHER ACCESSORIES



▲ AD Board



▲ Cables and Other Accessories

| MODEL                        | IAD-M121   |
|------------------------------|--|
| Features                     | 3D COMB FILTER and ACE-3 Color Engine<br>Support 8bits/ 10bits LVDS interface<br>VGA, DVI, HDMI x 2, USB Media, RS232, Light Sensor Supported<br>Audio 5W x 2 Supported<br>USB Port for Firmware Upgrade |
| DC Input                     | 12 VDC   |
| Panel Power Output Selection | 3.3V/ 5V/ 12V DC   |
| Operating Temperature        | -20°C to +55°C   |
| Compliance                   | Designed to meet MIL-STD-810G, MIL-STD-461E  |

ACT is also capable of designing and manufacturing different water-proof, or D38999 military cables. Based on our client's original design, we can provide a cost-effective proposal.

Besides, other accessories, for instance, EMI shielding bracket design, mounting solution, AD Board, internal cables and heater. These are common projects we have been handling.

Last but not least, we always stay with our clients. Our Design to order service has been customizing plenty of solutions over the years. We understand that our customers have different applications, environmental and structural requirements. Our customization service would definitely provide solutions for you and your customers.

CONTACT INFORMATION

|                                 |           |  |
|---------------------------------|-----------|--|
| BASIC<br>CONTACT<br>INFORMATION | Tel       | +886-2-25595216  |
|                                 | Fax       | +886-2-25595218  |
|                                 | Address   | 2F-3, No 110 Sec. 1, YanPing N. Rd. Datong Dist., Taipei City 10341, Taiwan  |
|                                 | Email     | sales@actpower.com.tw  |
| WEBSITE<br>&<br>SOCIAL MEDIA    | Website   | www.actpower.com.tw/   |
|                                 | FB        | ACT Power Taiwan Ltd (www.facebook.com/ACTPOWERTaiwan)   |
|                                 | YouTube   | ACT POWER TAIWAN CO., LTD (www.youtube.com/channel/UC4gM_S4EP_EiAK84taEEFgQ)   |
|                                 | LinkedIn  | ACT POWER Taiwan Co., Ltd. (www.linkedin.com/company/act-power-taiwan-ltd./)   |
| DISTRIBUTOR<br>INFORMATION      | India     | <b>Thirdwave Ruggedtech Pvt. Ltd.</b><br>+91-932-8283304<br>info@thirdwaveruggedteck.com<br>www.thirdwaverugged.com<br>B-4, Chaitanya, opp. Maradia Plaza, Ellisbridge, Ahmedabad-380006, Gujarat, India.                                |
|                                 |           | <b>VARISIS Advanced Engineering &amp; Software Technologies India Pvt. Ltd.</b><br>+91-120-4213659<br>info@varisis.in<br>www.varisis.in<br>Plot No-06, Block-B, Sector-58, Phase_III, Noida-201301, Uttar Pradesh-, Ind                  |
|                                 |           | <b>Univa Technologies Pvt. Ltd</b><br>+91-802-22290038<br>info@univatech.com<br>www.unified.co.in<br>Jains Heights-Solus , 3rd Floor, Unit G & E, 1st Cross, J.C. Road, (Opp. Jain College),Sampangi Rama Nagar, Bangalore–560027, India |
|                                 |           | <b>KJ ENERGY PRODUCTS PRIVATE LIMITED</b><br>+91-080-29515133<br>Sales@kjenergy.in<br>No. 229, 11th Main, 2nd cross, 3rd Phase, Peenya Industrial Area I Bangalore 560058  |
| Singapore                       | Singapore | <b>Universel Tech Solutions Ltd.</b><br>+91 9555751100<br>utsinfo@universeltechsolutions.com<br>http://universaltech-solutions.com/<br>#77, 7th Main, vinayaknagar, bagalur cross, yelahanka BANGALORE 560063                            |
|                                 |           | <b>Hornbill Rugged Networks Pte. Ltd.</b><br>+65 6444 9434<br>info@hornbillrugged.com<br>www.hornbillrugged.com<br>41 Kallang Pudding Road, #04-03B, Golden Wheel Building, Singapore, 349316  |
|                                 |           | <b>Miltec Rugged Computer Solutions LLC</b><br>+971 4 3795910<br>info@milcomputing.com<br>Milcomputing.com<br>#301B, Al Nakheel Building, AL Karama, PO Box-126830, Dubai, UAE   |
|                                 |           | <b>Project-X Technologies Ltd.</b><br>+64 9 3030198<br>mehome.co.nz@gmail.com<br>154 Queen Street, Auckland CBD, Auckland 1010   |