

**SPLIETHOFF EXPERIENCED NATO PARTNER**

# SEALIFT TRANSPORT SERVICES

*SPAARNEGRACHT*

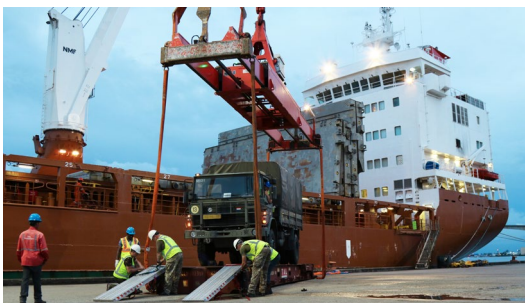
**One-stop shop for military logistics**





# We are the **one-stop shop** for military logistics

OUR SEALIFT PROJECTS MEET ALL REQUIREMENTS



## Maritime experience

Spliethoff is one of the largest shipping companies in the Netherlands, with over a century of maritime expertise and a proven track record in several Sealift projects. We have a large and modern fleet of more than 100 vessels ranging in size from 2,100 to 23,000 tonnes deadweight capacity.

Versatility, safety and flexibility are at the heart of our service and this is reflected in our fleet, which includes multipurpose, geared tweendeckers, heavy lift vessels, shortsea vessels, Ro-Ro vessels and semi-submersibles, all suitable for the transport of military equipment.

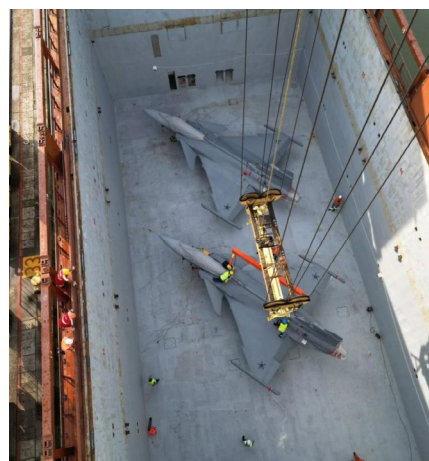
### KEY CHARACTERISTICS

 Dutch flag	 Owner of over 100 ocean going ships	 IMO 1 suitable ships	 Well trained employees and crew	 One-stop shop
---------------------------------------------------------------------------------------------------	----------------------------------------------------------------------------------------------------------------------------	-------------------------------------------------------------------------------------------------------------	-------------------------------------------------------------------------------------------------------------------------	--------------------------------------------------------------------------------------------------------



### Ro-Ro (Roll-on/Roll-off)

Spliethoff has a fleet of Ro-Ro vessels designed to transport wheeled cargo such as trucks, cars, trailers and other rolling equipment. Our Ro-Ro service is often used for international trade and logistics, the vessels are designed to operate in ice-restricted, remote areas.



### Lo-Lo (Lift-on/Lift-off)

All Spliethoff vessels are equipped with removable tweendecks and cargo cranes with a lifting capacity of up to 1,400 tonnes in units. This range of Lo-Lo capabilities makes the vessels suitable for loading and discharging all types of cargo anywhere in the world.



### Flo-Flo (Float-in/Float-out)

Spliethoff Group's semi-submersible vessels are designed to transport floating cargo such as superyachts, large construction pieces and military equipment. Our Flo-Flo service is often used to transport yachts around the world. The specific design features make the vessels very suitable for marine transport and Ro-Ro cargoes.

## Team of professionals

A well trained and dedicated team of professionals is committed to making sure all Sealift projects are handled confidential, and efficiently according to the highest standards. Set standards are defined for each Sealift project, and compliance and monitoring are in place to ensure that all requirements are met.



## When you choose Spliethoff, you opt for quality and reliability!





### Spealift Department

Radarweg 36, 1042 AA Amsterdam

+31 20 4488 400

[sealift@spliethoff.com](mailto:sealift@spliethoff.com)

[www.spliethoffgroup.com](http://www.spliethoffgroup.com)

**SPLIETHOFF**  
**GROUP**