



MAKING RF VISIBLE

TUALCOM operates in the fields of RF and communication technologies offering high-performance, high-quality state-of-the-art products and solutions with innovative designs.

General purpose or application specific RF communications products excel at compactness, power efficiency and customizability. TUALCOM's RF and communications product line extends into high frequency and broadband applications related to radar and electronic warfare.

In addition to established, field proven COTS products that are already operational on various platforms, continuing research and development activities enable TUALCOM expand existing product families to accommodate harshest requirements described by local and international customers.



Mustafa Kemal Mahallesi 2119. Cadde No: 11/1  
06530 Çankaya-ANKARA TÜRKİYE  
T. +90 312 485 22 85  
www.tualcom.com | sales@tualcom.com.tr



# RADAR & ELECTRONIC WARFARE

MULTI-USE AND COMPACT  
HIGH PERFORMANCE SOLUTIONS



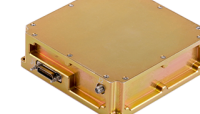
ACTIVE RADAR  
REFLECTOR



DFD RECEIVER



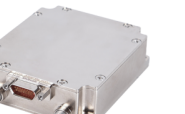
IFM RECEIVER



RADAR  
TRANSPONDER



ESM / ELINT  
RECEIVER



RADAR  
ALTIMETER



	DFD RECEIVER	IFM RECEIVER	ESM/ELINT RECEIVER
Dimensions (cm)	15.2 x 14.7 x 3.0	15.2 x 14.7 x 3.0	41 x 26 x 7.5
Weight (g)	1060	700	8000
Operating Voltage & Input Current	600 mA @ 12 VDC	400 mA @ 28 VDC	1800 mA @ 28 VDC
Operating Temperature	-40 C to +80 C	-40 C to +80 C	-40 C to +80 C
Frequency Range	2-18 GHz	2-18 GHz	2-18 GHz
Instantaneous Bandwidth	16 Ghz	16 Ghz	16 Ghz
Frequency Sensitivity	1MHz	1MHz	1MHz
Frequency Precision	≤ 3 MHz RMS	≤ 3 MHz RMS	≤ 3 MHz RMS
Dynamic Range	65 dB (-55, +10 dBm)	65 dB (-55, +10 dBm)	65 dB (-55, +10 dBm)
Min. Pulse Width	50 ns	100 ns	100 ns
Max. Pulse Width	CW	CW	CW
PW Precision	10 ns	10 ns	10 ns
Connectors	SMA Female Micro-D 15 Pin Female Micro-D 51 Pin Female	SMA Female Micro-D 15 Pin Female Micro-D 51 Pin Female	SMA Female MIL-STD-38999
Environmental Condition	MIL-STD-202F, MIL-STD-810D	MIL-STD-810G	MIL-STD-810G
EMI / EMC	MIL-STD-461F	MIL-STD-461F	MIL-STD-461F



## ACTIVE RADAR REFLECTOR

**Dimensions (cm)**  
9.5 x 6.2 x 1.6

**Weight (g)**  
192

**Operating Voltage & Input Current**  
150 mA max @28 VDC

**Operating Temperature**  
-40 C to +80 C

**Frequency Range**  
5-18 GHz

**Max. Gain**  
>60 dB

**RF Attenuation Range**  
0-31 dB

**Input Voltage**  
16-32 VDC

**Programming Interface**  
RS 232

**Connectors**  
SMA  
9-pin Micro-D Socket

**Environmental Condition**  
MIL-STD-810G

**EMI / EMC**  
MIL-STD-461F



## RADAR TRANSPONDER

**Dimensions (cm)**  
11.7 x 11.7 x 3.7

**Weight (g)**  
750

**Output Power**  
10 dBm

**Band Width**  
40 mHz

**Dynamic Range**  
90 dB

**Frequency**  
10 - 10.6 GHz

**Input Voltage (Isolated)**  
1500 VDC

**Input Voltage**  
9 - 36 VDC

**Operating Voltage & Input Current**  
500 mA @ 28 VDC

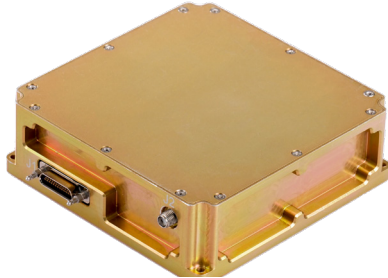
**Interface**  
RS 422, RS 485, Ethernet

**Sensitivity**  
- 80 dBm

**Connectors**  
25-pin Micro-D D-click, 50Ohm SMA

**Environmental Condition**  
MIL-STD-810G

**EMI / EMC**  
MIL-STD-461F



## RADAR ALTIMETER

**Minimum Altitude**  
1.5 m

**Maximum Altitude**  
1500 m

**Altitude Accuracy**  
60 cm or 1% (whichever or bigger)

**Maximum Platform Velocity**  
500 m/s

**Frequency**  
4.2 - 4.4 GHz

**Output Power**  
27 dBm

**Input Voltage**  
12 - 36 VDC

**Interface**  
RS 422/ 485/ 232 (Ethernet Option)

**Update Rate**  
83 Hz

**Weight**  
200 g

**Dimensions (cm)**  
7 x 6.1 x 2

**Operating Temperature**  
-40 C to +71 C

**Environmental Conditions**  
MIL-STD-810G

**EMI / EMC**  
MIL-STD-461F

