

DESAN
S H I P Y A R D
KAPTANOGLU



Kaptanoglu is one of the oldest ship-owners in Turkey with over hundred years of maritime experience and tradition. Shipping arm is one of the leading bulker and tanker management group in the region and owner of very efficient ship repair and maintenance / ship building yard in Turkey.



- Activities



SHIPPING



Our versatile fleet is built to high specifications, and manned by trustworthy and experienced company personnel.

Kaptanoglu's vessels carry crude oil, petroleum, chemical and petroleum products for oil major companies and traders.



KPT Ship Management Co. was founded with the main purpose of shipping business. The scope of environmental safety and quality management system complies with definition of the ISM Code, ISO 14001:2004 and ISO 9001:2008 include all Ship Management services provided by the Group. The environmental safety and quality management systems comply with the requirements of the ISM Code (SOLAS Chapter IX), ISO Environmental Management system as defined ISO 14001: 2004 and ISO Quality Management Standard as defined ISO 9001:2008



Hacı Ismail Kaptanoglu Ship Management & Trading Co. manages and operates dry bulk cargo ships which are described as "Bulk Carrier" ships. The scope of environmental safety and quality management system complies with definition of the ISM Code, ISO 14001:2004 and ISO 9001:2008. The environmental safety and quality management systems comply with the requirements of the ISM Code (SOLAS Chapter IX), ISO Environmental Management system as defined ISO 14001: 2004 and ISO Quality Management Standard as defined ISO 9001:2008



• Business Partners

- Activities



SHIPYARD



Desan Shipyard is dynamically acting in ship building and repair field with a highly reliable, responsible and hardworking team and is ready to explore further on a worldwide basis.



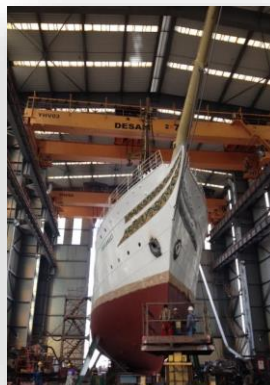
Desan Shipyard has been established back in 1970 Istanbul Turkey.

Currently Desan owns three shipyard in Tuzla Bay, one shipyard in Golcuk/Kocaeli and controls three shipyard in Yalova area which performs shipbuilding (Naval / Commercial), repair and maintenance (all type of ships), conversion/renovation projects.

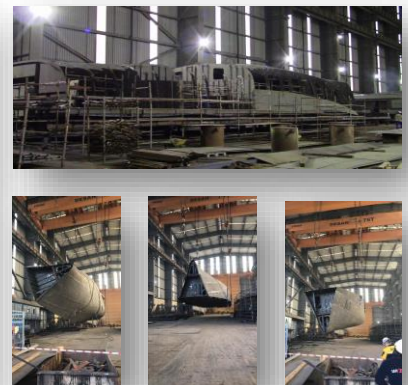
REPAIR



MODERNIZATION



NEW BUILDING



- Locations



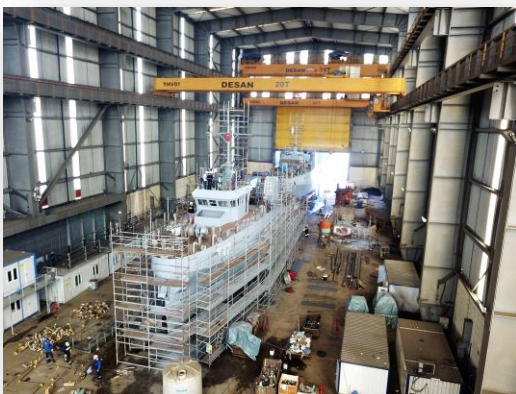
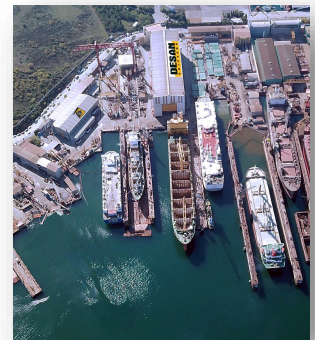
• Capacity

- ✓ Desan has three Floating Docks in Tuzla
- ✓ Desan has one Half Wet Slipway in Golcuk
- ✓ Desan controls two Floating Docks in Yalova



FLOATING DOCS	No:1	No:2	No:3
Lifting Capacity (ton)	49.000	19.000	8.500
Length (m)	234	177	145
Width (m)	41	27	25

- ✓ Total area 228.000 m²
- ✓ Tuzla shipyard area 60.000 m²
- ✓ Yalova shipyard area 120.000 m²
- ✓ Golcuk Shipyard area 48.000 m²
- ✓ 50.000 m² indoor area
- ✓ Biggest closed shipbuilding hall in the region
- ✓ 340 tons indoor lifting capacity.





• Repair

Desan Shipyard is a dynamic player in the ship repair & ship building field with a highly reliable, responsible and hardworking team and a proven success record of international business. We value the latest technology and innovation.

We offer turn key solutions to every need of our Clients. We methodically review the whole vessel from bow to stern and concentrate on every single detail.

Desan Shipyard repairs around 150 ships per year.



DRY DOCKING

Desan offers different size of floating docks up to Post Panamax size of vessels which makes Desan Shipyard an ideal dock-of-call for a diverse range of vessels. Our track record shows a list of different types of vessels that called on Desan for repairs and upgrades



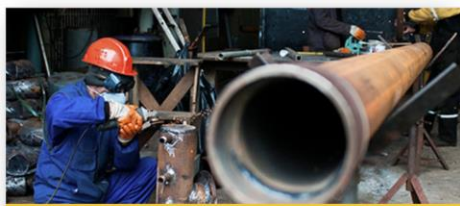
GRIT BLASTING & PAINTING

Surface preparation and coating is different for each project and it is taken care of by fully trained staff in Desan with painting engineers and technicians. The main objective is to exceed customer expectation in a cost effective manner with the best quality and methods possible.



STEEL WORKS

At Desan Shipyard we can easily reach 16.000 ton productivity annually with our workshops that are equipped with a wide range of fixed machinery like CNC plasma cutting benches with latest technology, hydraulic press brakes up to 400 tons and welding machines of automatic and gas welding type...



PIPE WORKS

Desan is the best source for top quality pipe manufacturing and renewal. With over 30 years of experience in repair and new building, our standards and superior quality structures are unsurpassed in the industry. Pipe Works specializes in designing, fabricating and installing the finest quality is well known in the market.



MECHANICAL WORKS

With the professional capacity of a consolidated team of engineers and workshops, Desan has a superior ability to complete maintenance and repair services of machinery including reconditioning of components. Desan is committed to providing marine users with qualified and experienced teams of following jobs during repair.



PROPULSION SYSTEM WORKS

Desan is among the leading shipyard can handle all type of propulsion system works within it's own workshop. For the benefit of our clients, Desan Shipyard has it's own high experienced team with all necessary tools ready in the shipyard.



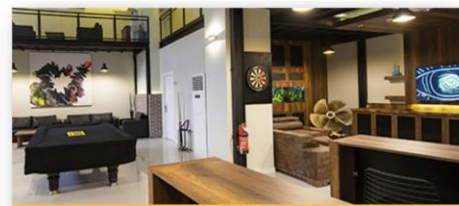
ELECTRICAL WORKS

Not only with new building but also for repairs of many vessels, Desan executes quality electric and electronic works using parts and service from Japan, Korea, China and Europe. Desan works with world famous navigational equipment makers for annual and five year services like Fruno, Tokimec and Transas.



SCRUBBER & BWTS WORKS

Desan Shipyard anticipates a challenging year ahead for owners as a result of the International Convention for the Control and Management of Ships Ballast Water & Sediments came into force on 08.09.2017. In response DESAN SHIPYARD has increased workshop capacity in areas such as electrical, steel and piping within the shipyard itself.



SUPERINTENDENT LOUNGE & OFFICE

We welcome all of our guests to DESAN UNIQUE LOUNGE with especial experience. We are pleased to introduce our renovated lounge & office facilities for our partners and visitors. Desan Lounge is designed to offer utmost privacy in its office rooms furnished with comfortable couches, tv, office tools and high speed Wi-Fi connection.



- Repair



Our Shipyard proudly serves over 47 countries all over the world

- Business Partners

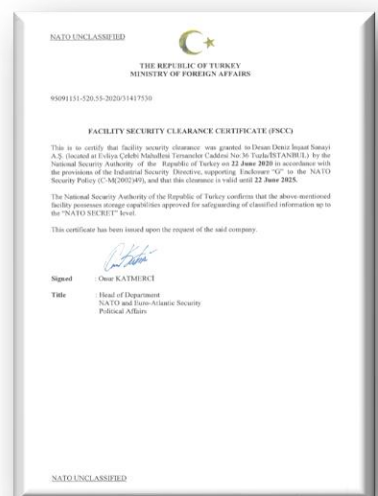


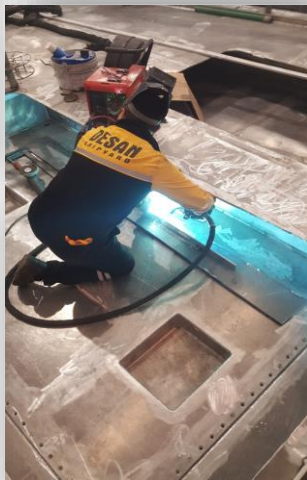
• Certificates

- ✓ Our Shipyard has RINA issued Quality Management Certificates; ISO 9001, ISO 14001 and ISO 45001



- ✓ “Military Ship Production Certificate”, NATIONAL SECRET “Facility Security Clearance” and Personnel Security Clearance Certificates are issued by MoD
- ✓ NATO SECRET “Facility Security Clearance” certificate is issued by Ministry of Foreign Affairs





- Naval New Building

2 (two) Emergency Response and Divers Training Boats were built simultaneously in our closed hall



- ✓ In this project maximum Turkish National resources utilized (%72) in the history of Turkish Naval Shipbuilding
- ✓ Boats are delivered **4 months 13 days prior** to delivery deadline




- **Naval New Building**



- ✓ 4 (four) Logistic Support Tankers are being built for Turkish Navy by DESAN-OZATA Business Partnership.
- ✓ Contract signature, 29 December 2021.
- ✓ First Cut of Steel, 02 June 2022.

- Length overall : 49.85 m
- Breadth : 9.2 m
- Draft maximum : 2.9 m
- Displacement : 980 t
- Speed : 15 kts
- Fuel Capacity : 205 tons





PERFORMANCE BASE LOGISTICS (PBL)

TRAINING

TECHNICAL ASISTANCE

SPARE PARTS

MAINTANANCE

ALL ABOVE SERVICES CAN BE PROVIDED THROUGH LIFE CYCLE OF THE BOAT

✓ TRAINING

- Providing/coordinating ship/fleet level training and courses
- Supporting Navy's education and training programs for operational requirements
- Cooperation with Maritime Universities to support the civilian Maritime Education and Training



✓ TECHNICAL ASISTANCE

- Provide 24/7 technical support
- Manage & coordinate technical support for existing systems and equipment



✓ SPARE PARTS

- Provide spare part support for the life cycle of the new build naval platforms
- Manage/coordinate/support



✓ MAINTENANCE

- Provide/support/coordinate maintenance for the new build naval platforms
- Manage/coordinate/support PMS - Predictive Maintenance System



NAVAL COLLECTIONS



- **EMERGENCY RESPONSE AND DIVING BOATS**



15 m. Catamaran / High Speed Coastal Dive Vessel

- ✓ Length : 14.9 m
- ✓ Breadth : 5.4m
- ✓ Draught : 0.85 m
- ✓ Hull : Marine Grade Aluminum
- ✓ Speed (Max) : 25 kts



35 m. Turkish Navy Diver Training Boat

- ✓ Divers Training
- ✓ Emergency Rescue
- ✓ Emergency Support Tasks for Diving Operations
- ✓ Excellent seakeeping, good all round visibility and provide a stable platform for the various operational roles required
- ✓ Decompression chamber for 4 (four) divers and 2 (two) medical personnel



52 m. Diver Training Vessel

- ✓ Higher capacity and more sophisticated version of the 35 m.
- ✓ Maritime Security Operations (MSO) including SAR
- ✓ Patrolling for critical infrastructure and shipping routes
- ✓ Emergency life and medical support
- ✓ Platform Flexibility

• FIRE FIGHTING BOATS



20 m. Search and Rescue Boat with FF0

Classification:

- ✓ Maritime Security Operations (MSO) including Search and Rescue
- ✓ Patrolling and Policing
- ✓ Pollution Control and Disaster Management
- ✓ Disaster Relief and Personnel Evacuation
- ✓ Emergency Medical and Life Support
- ✓ Fire Fighting Support



24 m. Fast Fire Rescue Boat with FF1

Classification:

- ✓ Fire-fighting capability to any floating platform
- ✓ Fast response
- ✓ Emergency Rescue
- ✓ Emergency Support Tasks for Towing and Pushing Operations
- ✓ Pollution Control and Disaster Management
- ✓ Emergency Medical and Life Support



25 m. Fast Catamaran Fire Rescue Boat with FF1 Classification:

- ✓ Fire-fighting capability to any floating platform
- ✓ Fast response
- ✓ Emergency Rescue
- ✓ Emergency Support Tasks for Towing and Pushing Operations



35 m. Fire Rescue Boat with FF1

Classification:

- ✓ Fire-fighting capability to any floating platform
- ✓ Fire-fighting capability to any onshore facility accessible from sea
- ✓ Emergency Rescue
- ✓ Emergency Support Tasks for Towing and Pushing Operations
- ✓ Excellent seakeeping, good all round visibility and provide a stable platform for the various operational roles required

• LOGISTIC SUPPORT VESSELS



49 m. Logistic Support Tankers

- ✓ Transfer marine diesel between fuel refinery facility and port fuel tanks
- ✓ Supply marine diesel and fresh water to naval platforms
- ✓ Logistic supply for naval platforms



82 m. Anchor Handling Tug Supply

- ✓ Boy and anchor handling and towing operations
- ✓ Fast response speed
- ✓ Long distance towing
- ✓ Deep water anchor handling
- ✓ Fi-Fi system
- ✓ Rescue operations



92 m. Off-Shore Platform Supply Vessel

- ✓ Fast response speed
- ✓ Stand-by rescue
- ✓ Deep water anchor handling (DP2)
- ✓ Oil recovery
- ✓ 100T bollard pull
- ✓ Fully automated/integrated vessel



Logistics Support Vessel (6000 / 4000 DWT)

- ✓ Length_{overall} : 105.2m / 92m
- ✓ Breadth : 16.0m / 14.6m
- ✓ Draft_{maximum} : 6.1m / 5.8m
- ✓ Displacement : 6670.0t / 3913.0t
- ✓ Speed : 14.5 kts

- **SMALL NAVAL PLATFORMS**

**15 m. Aluminum Fast Intervention Boat**

- ✓ Patrolling & Interception of hostile vessels
- ✓ Protection of critical infrastructure
- ✓ Prevention of irregular migration,
- ✓ Search and Rescue (SAR) operations
- ✓ Maritime police tasks in restricted waters
- ✓ Environmental watch / Pollution control

**20 m. VIP Boat**

- ✓ Hosting VIP for daily visits
- ✓ Boarding and Disembarking of VIP
- ✓ Search and Rescue (SAR) operations

**20 m. NAVAL FIGHTING BOAT**

- ✓ Patrol, Protection of critical infrastructure
- ✓ Interception of hostile vessels
- ✓ Prevention of irregular migration
- ✓ Search and rescue (SAR) operations
- ✓ Maritime police tasks in restricted waters
- ✓ Support tasks for other naval Units
- ✓ Environmental watch / Pollution control

• OTHER NAVAL PLATFORMS



45 m. SAR Boat

- ✓ Designed to operate in coastal and deep sea area for multiple missions
- ✓ Maritime Security Operations (MSO) including Search and Rescue
- ✓ Surveillance and patrolling in territorial waters
- ✓ Patrolling and Policing for protection of ports and shipping routes
- ✓ Fire Fighting Support



59 m. 400T/600T Fast Patrol Boat

- ✓ Patrolling in territorial waters and the exclusive economic zone
- ✓ Surveillance and intelligence gathering
- ✓ Conducting Naval Gun Fire Support (NGFS) Operations
- ✓ Search and rescue (SAR) operation
- ✓ Conducting Anti-Surface Warfare Operations
- ✓ Conducting Anti-Air Warfare (for self defence) Operations



86 m. Offshore Patrol Vessel (OPV)

- ✓ Patrol , surveillance, helo operations
- ✓ Maritime Security Operations (MSO)
- ✓ Defense of off shore facilities and natural resources
- ✓ Evacuation and humanitarian relief
- ✓ Support special forces operation



Tersaneler cad. No: 36 Tuzla 34944 Istanbul
+90 (216) 395 20 25
repair@desan-shipyard.com
info@desan-shipyard.com



KAPTANOGLU