



Regulatory and technical challenges for the development of a comprehensive European framework on rail ticketing

Transport Ticketing Global 2025

4 March 2025, London

European framework on rail ticketing



MDMS

MULTIMODAL DIGITAL
MOBILITY SERVICES
REGULATION



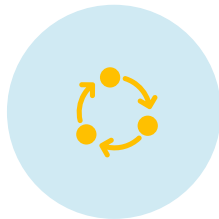
SDBTR

SINGLE DIGITAL
BOOKING AND
TICKETING REGULATION



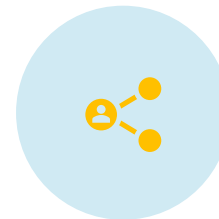
RPRR

RAIL PASSENGER RIGHTS
REGULATION



MMTIS

EU-WIDE MULTIMODAL
TRAVEL INFORMATION
SERVICES



TSI TELEMATICS

TECHNICAL SPECIFICATIONS
FOR INTEROPERABILITY OF
DATA SHARING,
INCL. TICKETING DATA



*Cross-border train travel is still too difficult for many citizens. People should be able to **use open booking systems** to purchase trans-European **journeys with several providers**, without losing their right to reimbursement or compensatory travel.*

*To this end we will propose [legislation] to **ensure that Europeans can buy one single ticket on one single platform and get passengers' rights for their whole trip.***

*Ursula von der Leyen – European Commission President
Political Guidelines 2024-2029*

Upcoming legislative proposals by the European Commission



MDMS

MULTIMODAL DIGITAL
MOBILITY SERVICES
REGULATION

NEW



SDBTR

SINGLE DIGITAL BOOKING
AND TICKETING
REGULATION

NEW



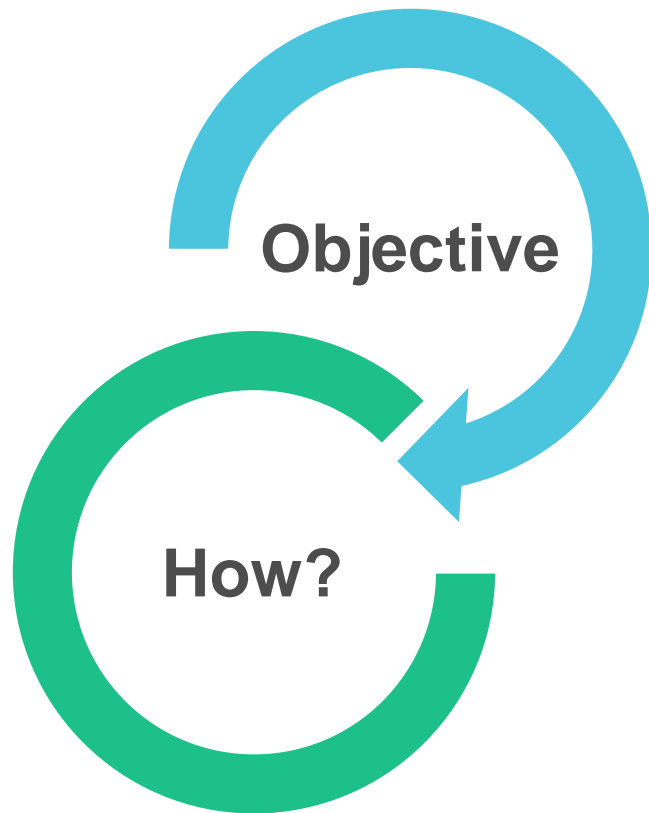
RPRR

RAIL PASSENGER
RIGHTS
REGULATION

TARGETED
REVISION



Multimodal Digital Mobility Services (MDMS) Regulation



Foster the deployment and use of **B2B and B2C MDMS** to facilitate sustainable **door-to-door multimodal passenger mobility**.

Code of Conduct for online mobility platforms:

- cooperation between service providers and transport operators;
- neutral information from platforms to end users and public transport authorities.

Scope of MDMS

B2C services

RE-LINKING SERVICES



BOOKING & PAYMENT SERVICES



INTEGRATED SERVICES OFFER



B2B services

GLOBAL DISTRIBUTION SYSTEMS

amadeus

TRAVELPORT

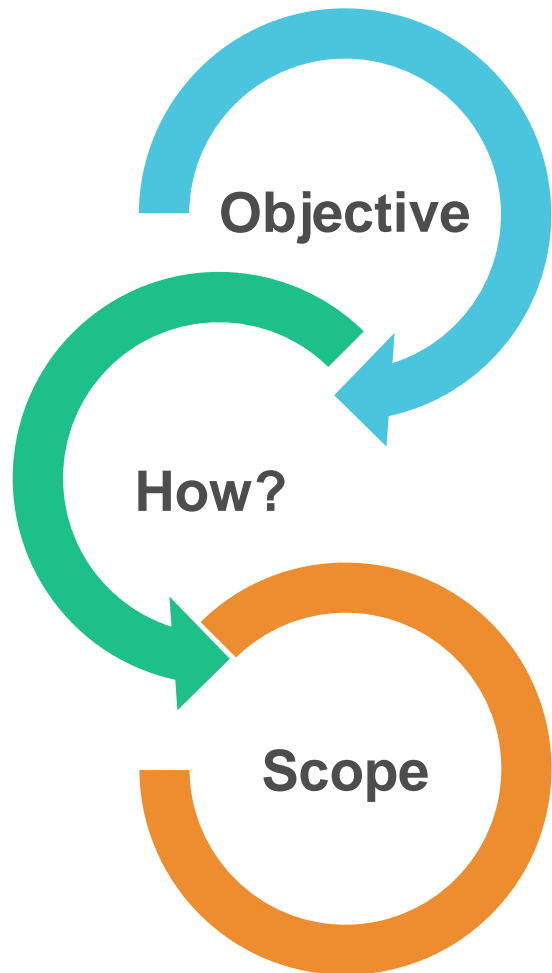
Sabre

COMPUTERISED RESERVATION SYSTEMS



travelfusion

Single Digital Booking and Ticketing Regulation (SDBTR)

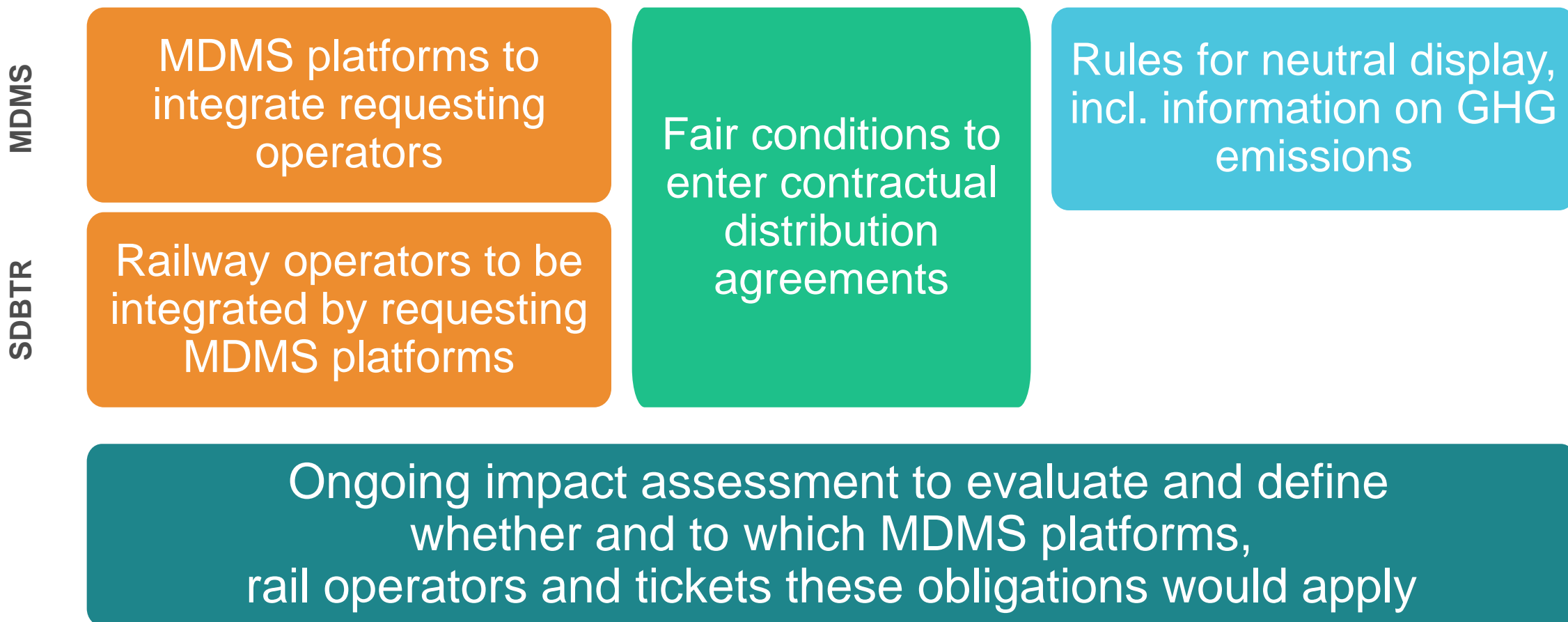


Increase the **range of rail ticket options available to the public** when purchasing through MDMS platforms.

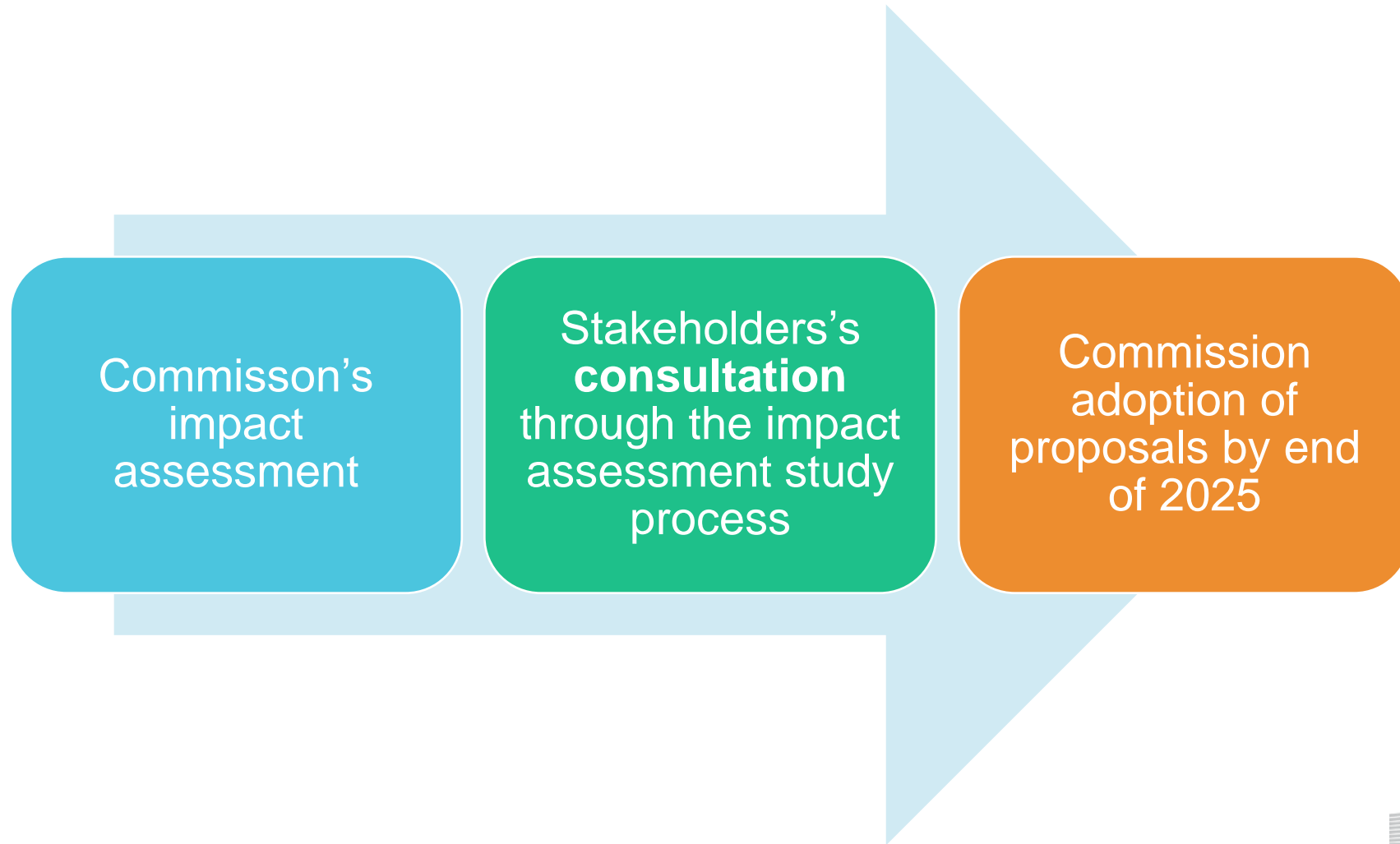
Rules on rail operators entering into commercial agreements with requesting MDMS service providers to enable the sale of their tickets.

Rail operators offering domestic or cross-border rail passenger services.

MDMS & SDBTR rules being considered



MDMS / SDBTR : next steps



Targeted revision of the Rail Passenger Rights Regulation (RPRR)

Current
framework

Passenger rights for multi-leg rail journeys and missed connections limited to “through-tickets”

Targeted
revision

Enhanced protection for passengers combining multi-leg rail tickets

EU-wide multimodal travel information services (MMTIS)



MMTIS

EU-WIDE MULTIMODAL
TRAVEL INFORMATION
SERVICES

2024 REVISION



Background of 2024 MMTIS revision

ITS Directive
2010/40/EU

EU-wide multimodal travel information
services (MMTIS) | Commission Delegated
Regulation (EU) 2017/1926

Objective

Enhance access to information data, including real-time data for journey planning, in order to facilitate seamless travel across all modes and across the EU.

How?

✓ **Since 2017:**

- obligation for Member States to set up **NATIONAL ACCESS POINTS (NAPs)** allowing access to data for data-users (service providers)
- obligation for data holders to make **static data accessible via the NAPs** (e.g. timetable, tariffs)

✓ **Since 2024:**

obligation for data holders to make **dynamic (real-time) data accessible via the NAPs** (e.g. traffic disruption, availability of on-demand services, real-time arrivals, delays)

Commission Implementing Regulation for interoperability of data sharing in rail transport



TSI TELEMATICS

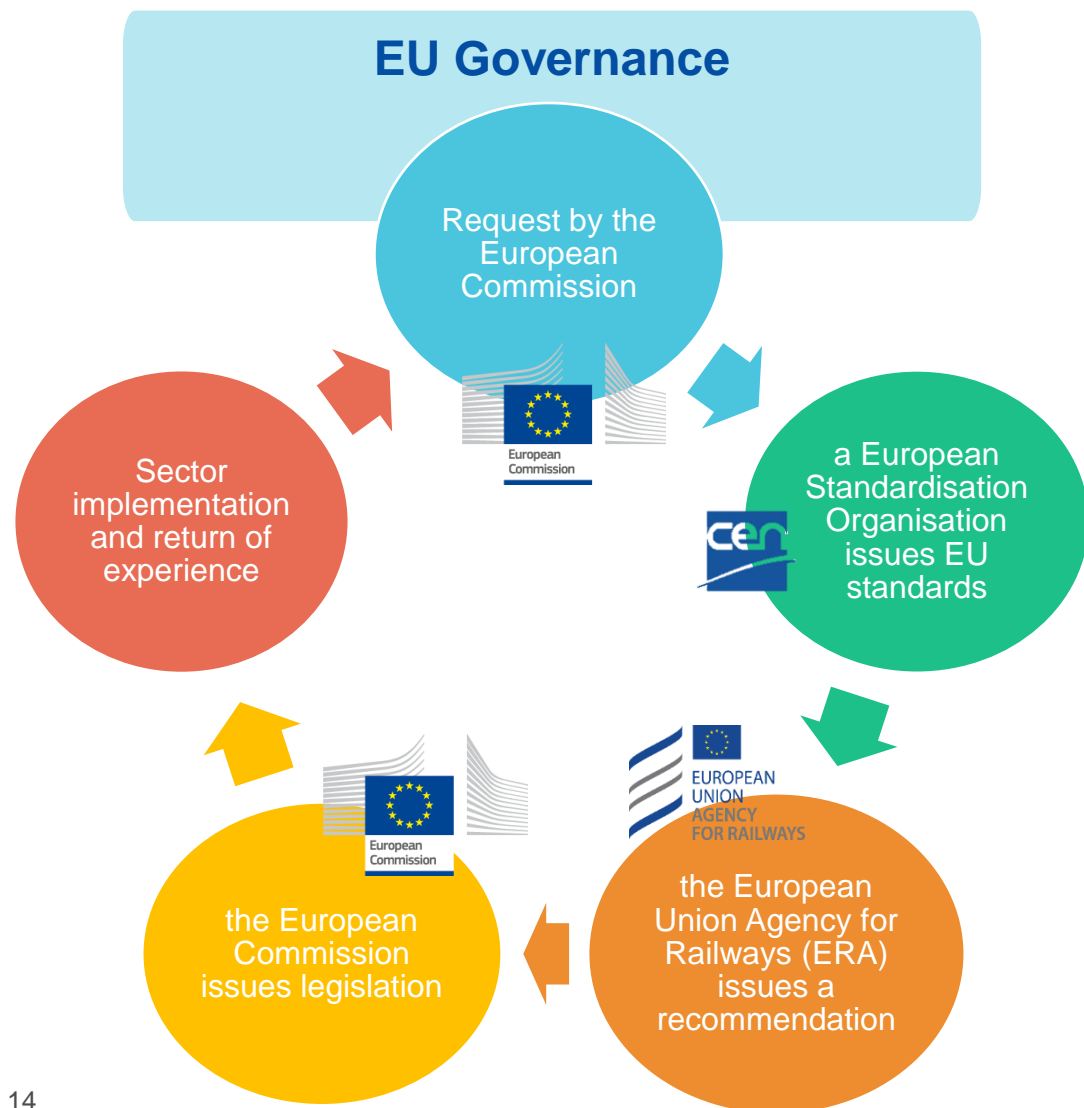
TECHNICAL SPECIFICATIONS
FOR INTEROPERABILITY OF
DATA SHARING,
INCL. TICKETING DATA

Available on '*Have your say*' for
public consultation:

[Rail interoperability - technical
specifications for the
'telematics applications'
subsystem](#)



The 4th Railway Package Technical Pillar



as system authority is mandated to **coordinate technical developments on rail ticketing** in the Union

- develops and **maintains technical specifications for rail ticketing**
- **maintains the rail Ontology** – building block of the European Mobility Data Spaces – applicable for data sharing in rail transport, including for ticketing data
- **manages and assigns common EU IDs for rail**
- lists **certification authorities for public key infrastructure** in rail data sharing
- collects **implementation figures for enforcement purposes**
- contributes to **assessing compliance**

Background of EU technical framework for rail ticketing and rail passenger travel information

Commission Implementing Regulation on a technical specification relating to the telematics subsystem of the rail system in the European Union **for interoperability of data sharing in rail transport**

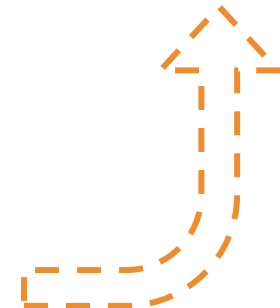
Rail interoperability Directive (EU) 2016/797

- TAP TSI - Telematics for passenger services | Commission Regulation (EU) No 454/2011
- TAF TSI - Telematics for freight services | Commission Regulation (EU) No 1305/2014

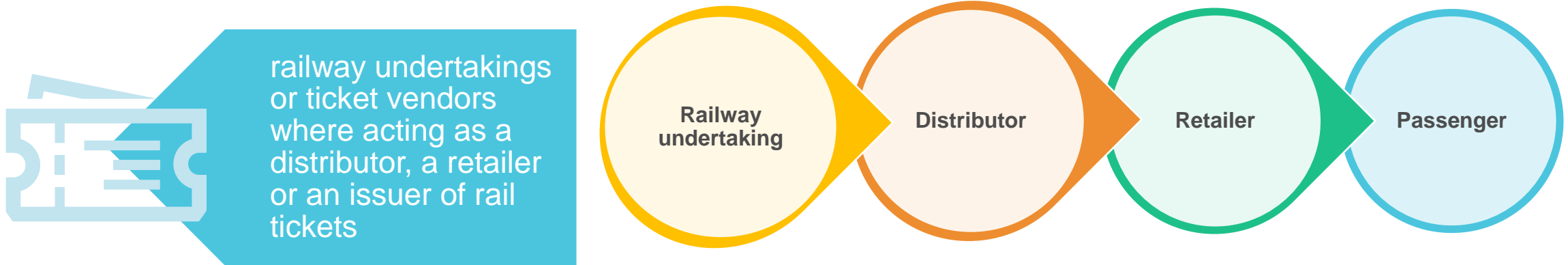
TSI Telematics



National Access Points
as set up by Member States
for EU-wide multimodal travel information
services (MMTIS)



Stakeholders involved in rail ticketing or rail passenger travel information



(operators) railway undertakings



infrastructure managers



passenger station managers

Open access to ticketing data



- **passenger conditions** and **timetable** of **carriage** by related railway undertakings



- **connection times** between access nodes by station managers



- **Tariff data** by railway undertakings

obligation to grant **public and free of charge access**

public access on the basis of legal provisions, or



access on the basis of contractual agreements

Minimum (“at least”) specifications and access conditions



via national
access points

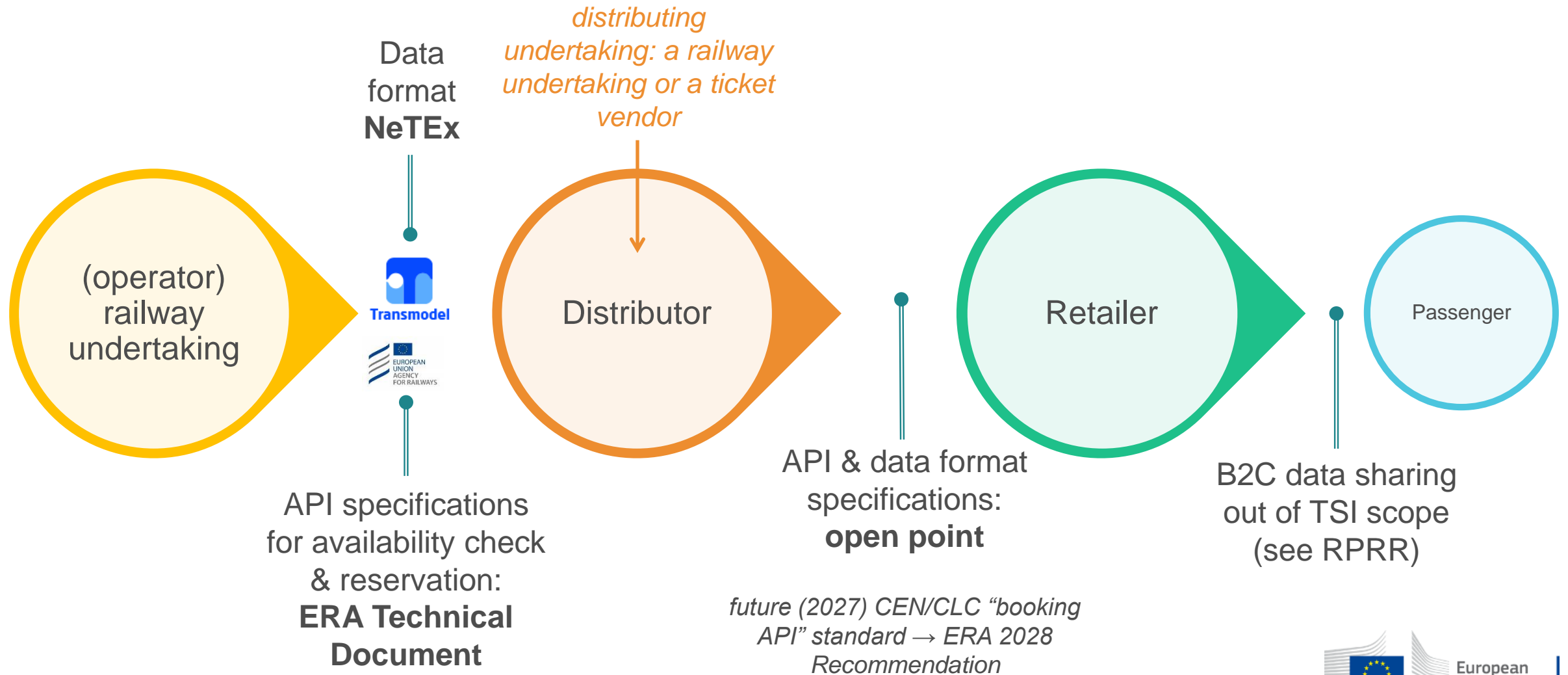


NeTEx format



Creative
Commons
open licences

Real-time availability of fares



Technical specifications delivering benefits to passengers



Non-discriminatory multi operator booking systems

Data and API specifications under an **EU governance**



Booking horizon of up to 5 months

Ticketing data to be made available at the latest 1 week after publication of the working timetable by the infrastructure manager



Enabling future rights for rail passengers combining multi-leg tickets

Minimum connection times defined by station managers in a non-discriminatory manner



Ensuring interoperability of digital tickets

Harmonised barcodes for cross-border and domestic tickets

Thank you

MDMS/SDBTR:

MOVE-MULTIMODAL-DIGITAL-MOBILITY-SERVICES@ec.europa.eu

Rail interoperability:

Yann Seimandi – DG MOVE (C.4)

Yann.Seimandi@ec.europa.eu



© European Union 2024

Unless otherwise noted the reuse of this presentation is authorised under the [CC BY 4.0](https://creativecommons.org/licenses/by/4.0/) license. For any use or reproduction of elements that are not owned by the EU, permission may need to be sought directly from the respective right holders.

Slide 17: logo napcore, source: napcore.eu

Slides 17 & 18: logo Transmodel, source: transmodel-cen.eu

Slide 17: logo Creative Common, source: creativecommons.org