



INTERNATIONAL UNION
OF RAILWAYS

UIC OMMT: A collaborative ecosystem built on global standards

Transport Ticketing Global – London - 17^h March 2026



TRANSPORT
TICKETING
GLOBAL

Bertrand MINARY

UIC Passenger & Freight Director – Coordinator of Middle East and Latin America region

Agenda

1

Rail as the backbone of sustainable mobility

2

Rail industry commitment to advance multimodality

3

Enabling door-to-door journeys as new focus of UIC

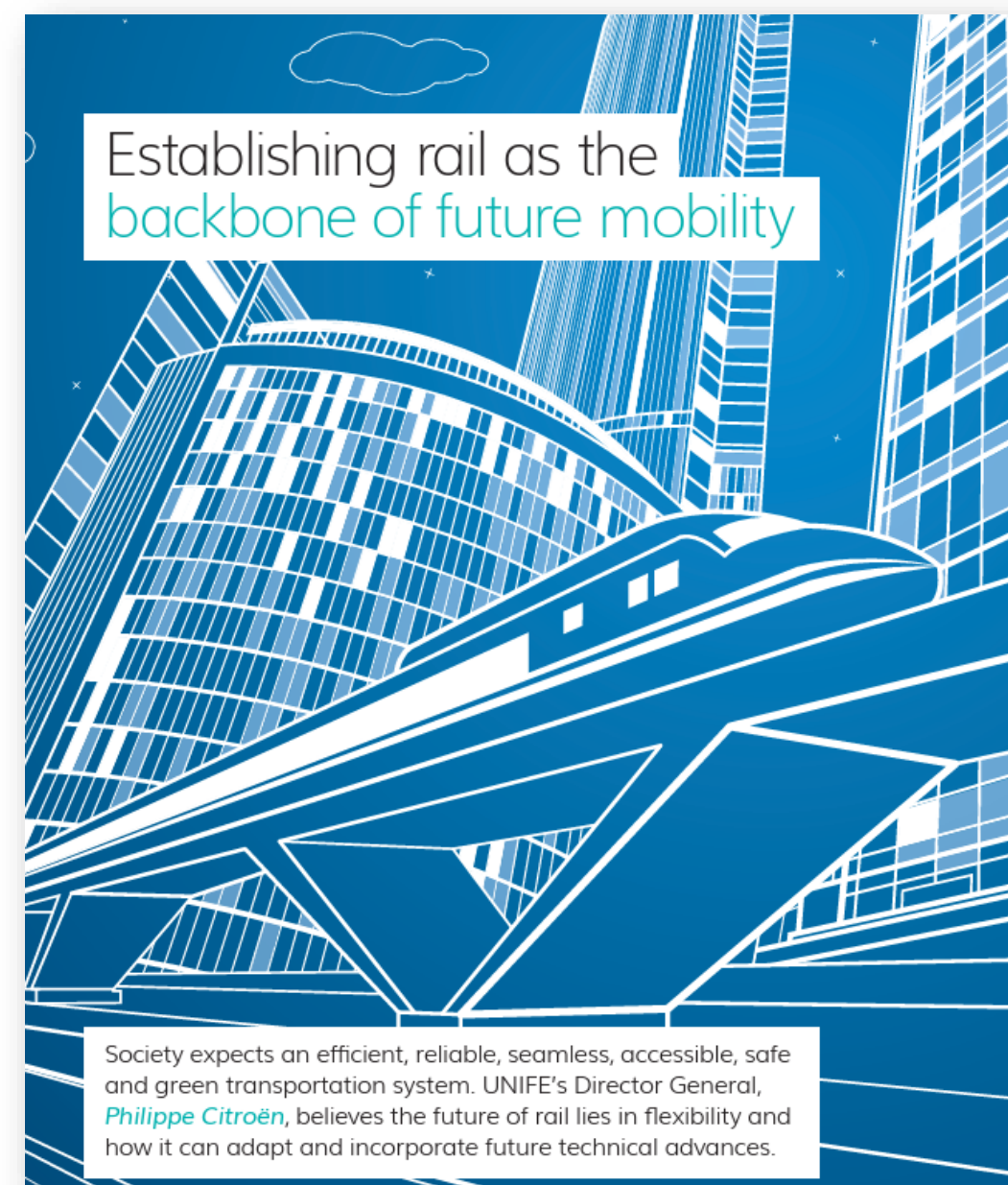
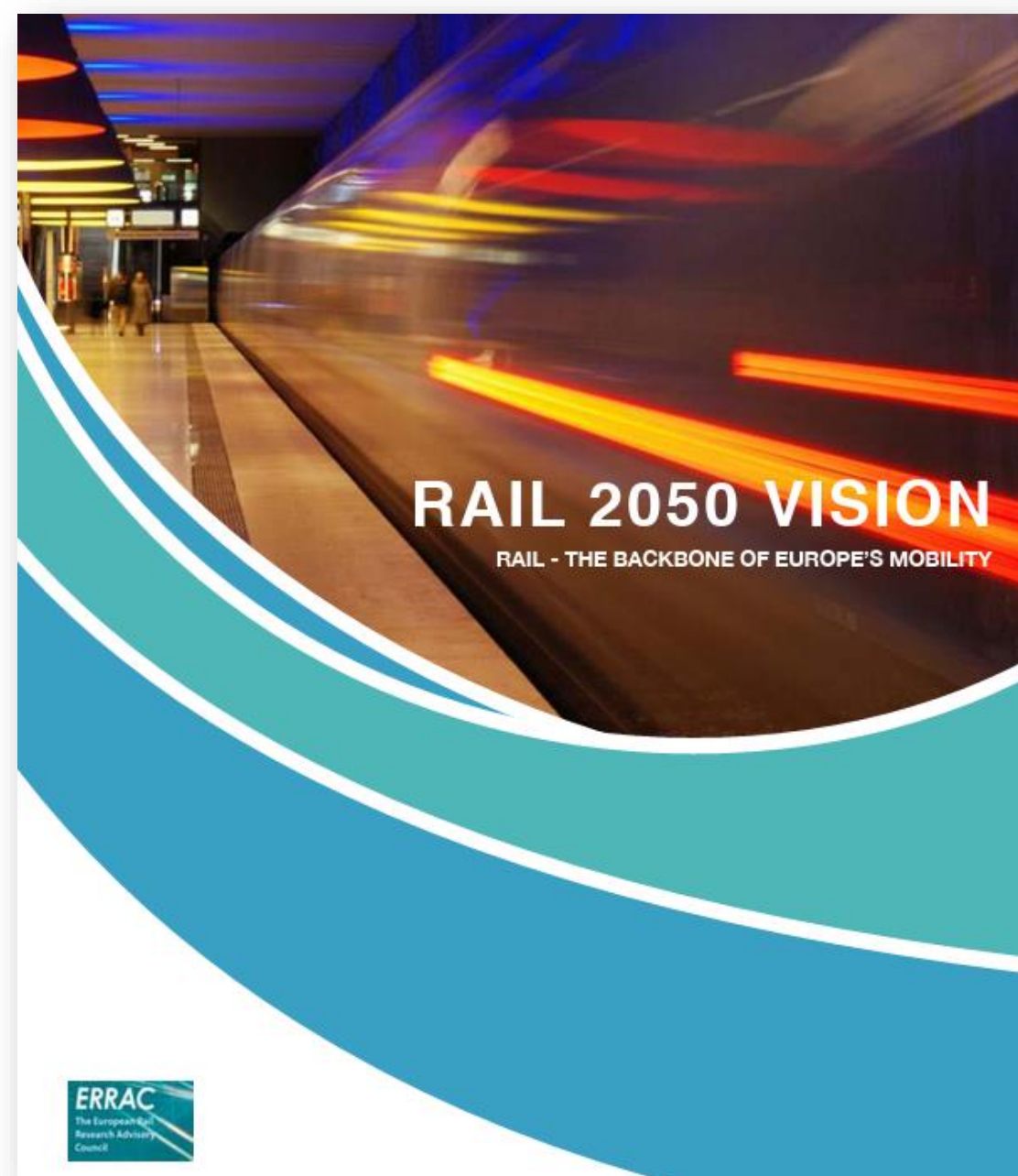
4

Introducing UIC Open MultiModal Toolkit (OMMT)

5

Q & A

Rail: the backbone of mobility



TRAINS: THE BACKBONE OF MOBILITY

2021, the European Year of Rail, acquires a particular meaning taking place in the middle of a pandemic, when restrictions to mobility are imposed around Europe. When the idea started taking shape, all hopes of a faster return to normality were up.

2021 is really the occasion to celebrate rail: during the past months and year, in an unprecedented situation, rail has demonstrated what it means

Carlo Borghini
Executive Director
Shift2Rail Joint Undertaking

R&I activities and many more were successfully performed around Europe by multiple companies.

The European Year of Rail is the opportunity to show to policy makers, decision makers but also commuters, tourists, and millennials how rail is ready to engage with them to leverage its unique strengths to match their needs: safety and security of operations, low environmental impact of the

EUROPEAN TRANSPORT WORKERS' FEDERATION

RAILWAYS AS THE BACKBONE OF SUSTAINABLE TRANSPORT

Press release
Brussels, 30 September 2021

Railways are the backbone of sustainable mobility & key to delivering EU climate objectives

The European Commission is holding a conference today entitled "*Building up a network of European long-distance rail services*", on the occasion of the arrival of the [Connecting Europe Express](#) in Berlin. Speaking at the event, Dr Alberto Mazzola, Executive Director of the Community of European Railway and Infrastructure Companies (CER), will stress that the long-term vision of the railway sector is the creation of a seamless European high-speed network, linking European capitals and major cities, supporting the development of an international passenger service market in order to deliver the EU's climate objectives.

Rail is the backbone of sustainable mobility



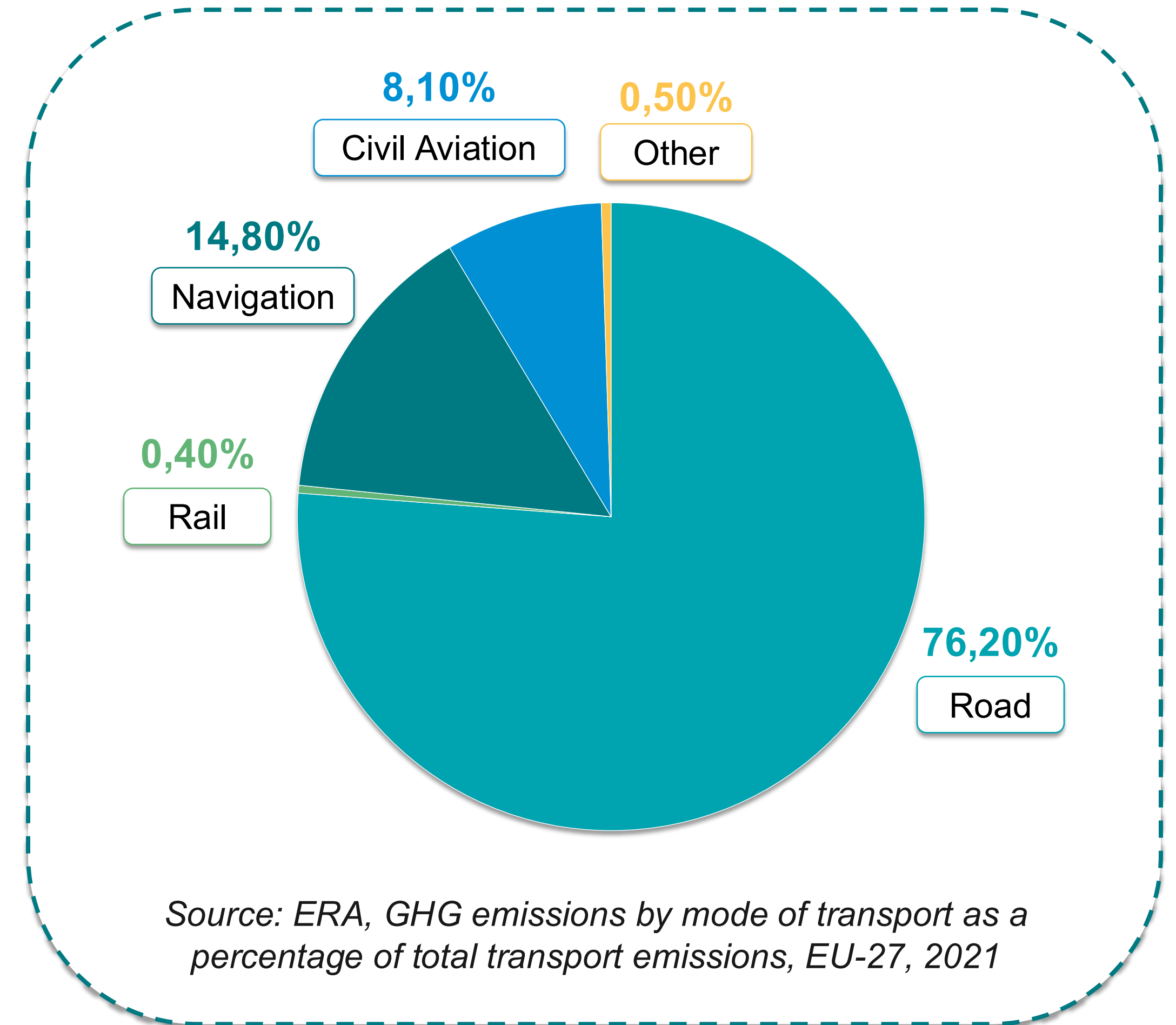
Superior environmental performance



High energy efficiency



Central to EU climate and transport policy and strategy



Every journey is door-to-door and simplicity wins

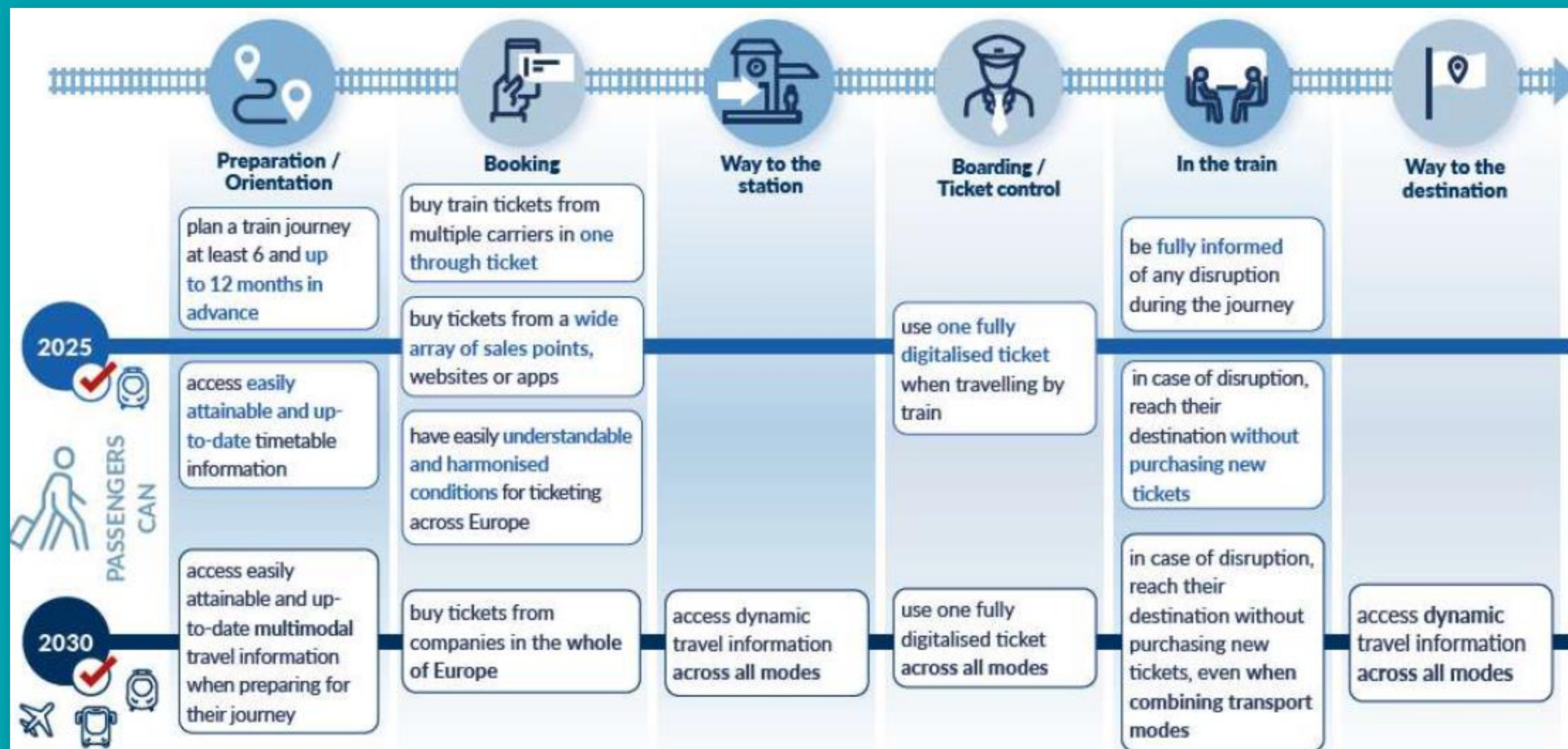
The key to competing with private cars or continental air: make door-to-door multimodal journeys simple and convenient (and fast?)



CER Ticketing Roadmap: from rail-only to multimodal by design

Enabling a seamless user experience for passengers when searching, selecting, and buying their railway services, including first and last mile transport

How we get there



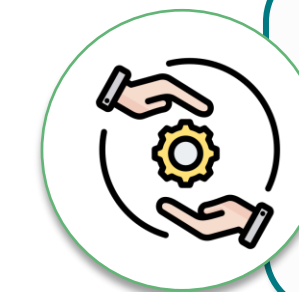
UIC as trusted partner for data exchange and harmonization in multimodal way



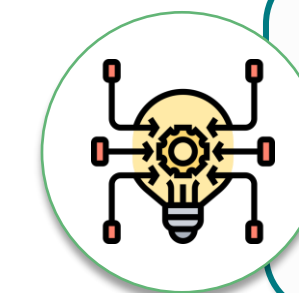
Key challenge: fragmented, incompatible systems and data, “pushy” regulation



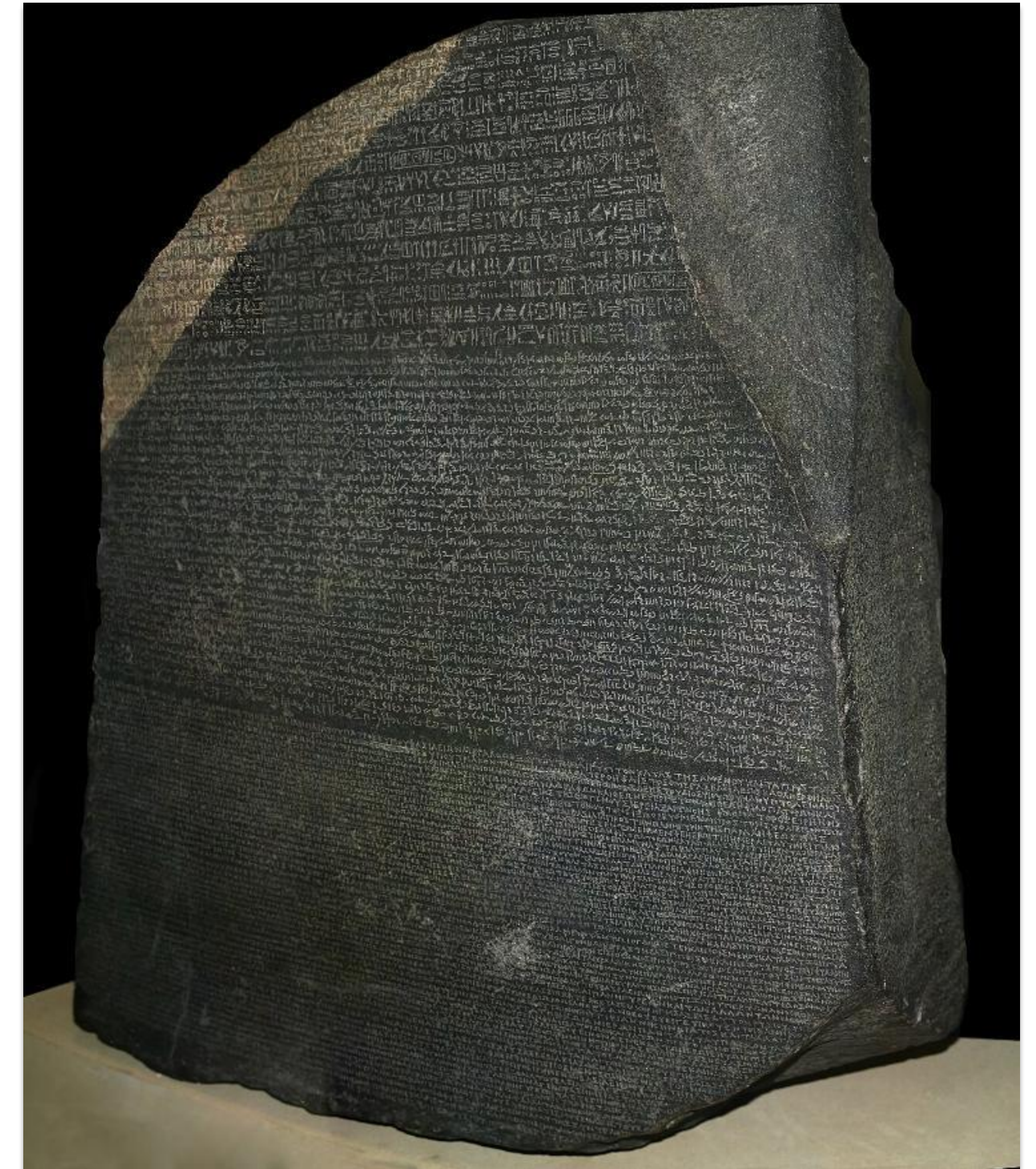
Working across formats and technologies to harmonise semantics, ontologies and processes



Bridging legacy and modern APIs



Enabling industry convergence and actionable roadmaps



Source: Rosetta Stone, Wikipedia

UIC cross-border expertise is now applied to multimodality

Starting from 30+ expertise in Data interoperability
Extending our expertise across the broader mobility ecosystems



Making specs (IRS) open and available to anyone
Expertise and roll-out (sector's roadmap)



eu travel tech



Collaborating with industry bodies and
standard-setting organizations



ADVANCING
PUBLIC
TRANSPORT



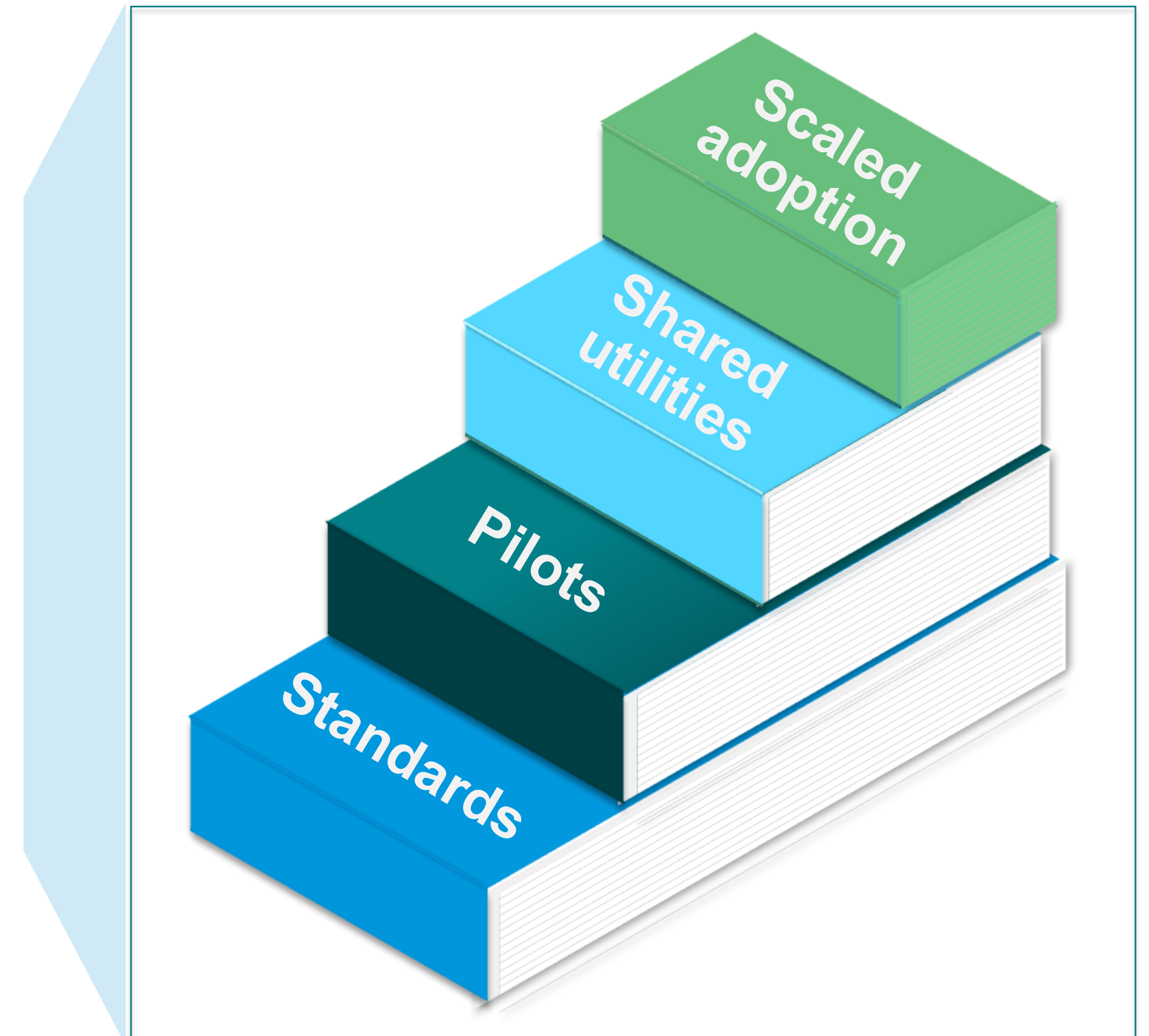
Standards are key but not enough: the industry needs shared enablers

Other industries rely on common digital services, besides on standards, to collaborate



UIC utilities enable mobility providers to share:

- ✓ public crypto keys
- ✓ e-ticket lifecycle
- ✓ real-time delays
- ✓ revenue sharing facilities



Introducing OMMT, the Open MultiModal Toolkit



<https://uic.org/passenger/passenger-services-group/ommt>



Technology-agnostic and adoptable in pieces

Open specs, open-source code, reference implementations, sandboxes and shared digital utilities where common services make sense

Leverages proven, scalable and secure UIC solutions: OMMT bricks have been in production 3+ years supporting international travel

What OMMT enables: simpler, scalable multimodal services

- **Seamless** digital provider-to-provider interactions
- **Faster implementation** of core functions: planning, booking, validation/inspection, data sharing and revenue apportionment/settlement
- **International reach**: expose local services and make them consumable globally
- **Lower** integration cost and time-to-market, increasing customer adoption and partner participation



OMMT.Plan

Provides multi-modal location data and supports the exchange of timetables and fares



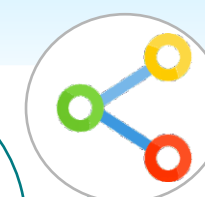
OMMT.Book

Streamlines the process of creating and managing offers and orders that span across various service providers



OMMT.Move

Grants customers a secure, digital representation of their travel rights, enabling them to utilize various mobility services while allowing providers to confirm and inspect service entitlements



OMMT.Sync

Ensures the real-time exchange of updated information regarding order status, customer journey details and traffic delays among service providers



OMMT.Share

Enables the fair distribution of revenues among service providers, with adjustments based on the actual service usage

In details

96,5% of Passenger traffic by rail covered
22 EU countries MS + linked countries (UK, Norway...)



Contact:
David SARFATTI
sarfatti@uic.org
Senior Passenger
Advisor & Digital
Services Delivery
Manager

- Develop by a community of >50 experts:
- >15 technical groups, as Multimodality
 - Some open to 3rd parties
 - Community of users
 - Events / Trainings

<https://uic.org/passenger/passenger-services-group/ommt>
<https://uic.org/passenger/passenger-services-group/>



More than 20 sectorial standards developed



Plan

MERITS – Integrated timetabling database of >100 operators*

Location codes databases (*wip*)



Book

DRTF - Database for Tariffs and Fares*

OSDM – API for the sales of products**

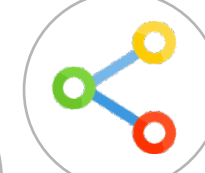


Move

Digital tickets layout + Flexible content barcode

PKMW (cryptographic public keys)

PRM ABT - Person with Reduced Mobility Assistance Booking Tool



Sync

RTMDE - Real Time Mobility Data Exchange*

eTCD - Electronic control database for tickets validation



Share

Revenue Sharing & audits

BCC – Bureau de compensation

Analytics (*wip*)



* Progressively interoperable with Transmodel (NeTEx, SIRI)



** To be interoperable with NDC

To sum up

1

Rail is the **backbone** of sustainable mobility

2

The rail industry is committed to advance **multimodality** through the European Ticketing roadmap

3

UIC cross-border **expertise** is now applied to multimodality

4

UIC wants to work with **all formats and standards** as trusted partner for data exchange and harmonisation

5

UIC has made available the **Open MultiModal Toolkit** to enable simpler, scalable multimodal services

Join the OMMT community:
get the specifications online,
participate in our working groups,
test in the acceptance platform,
and launch pilots with Partners already
in production



INTERNATIONAL UNION
OF RAILWAYS

Thank you for your attention



CONTACT

Bertrand MINARY

*Passenger Director – Coordinator of Middle
East and Latin America region*

Tel +33 (0)6 07 37 45 59

minary@uic.org

Stay in touch with UIC:     [#UICrail](#)

shop.uic.org



WATCH NOW 

uic.org

