

FREEWHEELING

Thomas Ableman
Founder, Freewheeling

former Director of Strategy & Innovation, Transport for London



MINI-SWITZERLAND

**Presentation on an Integrated Transport
Demonstrator**

TTG | Tuesday 18th March 2026

www.freewheeling.info

FREEWHEELING

Enabling Transport Changemakers



**TRANSPORT
FOR LONDON**

EVERY JOURNEY MATTERS

Chilternrailways





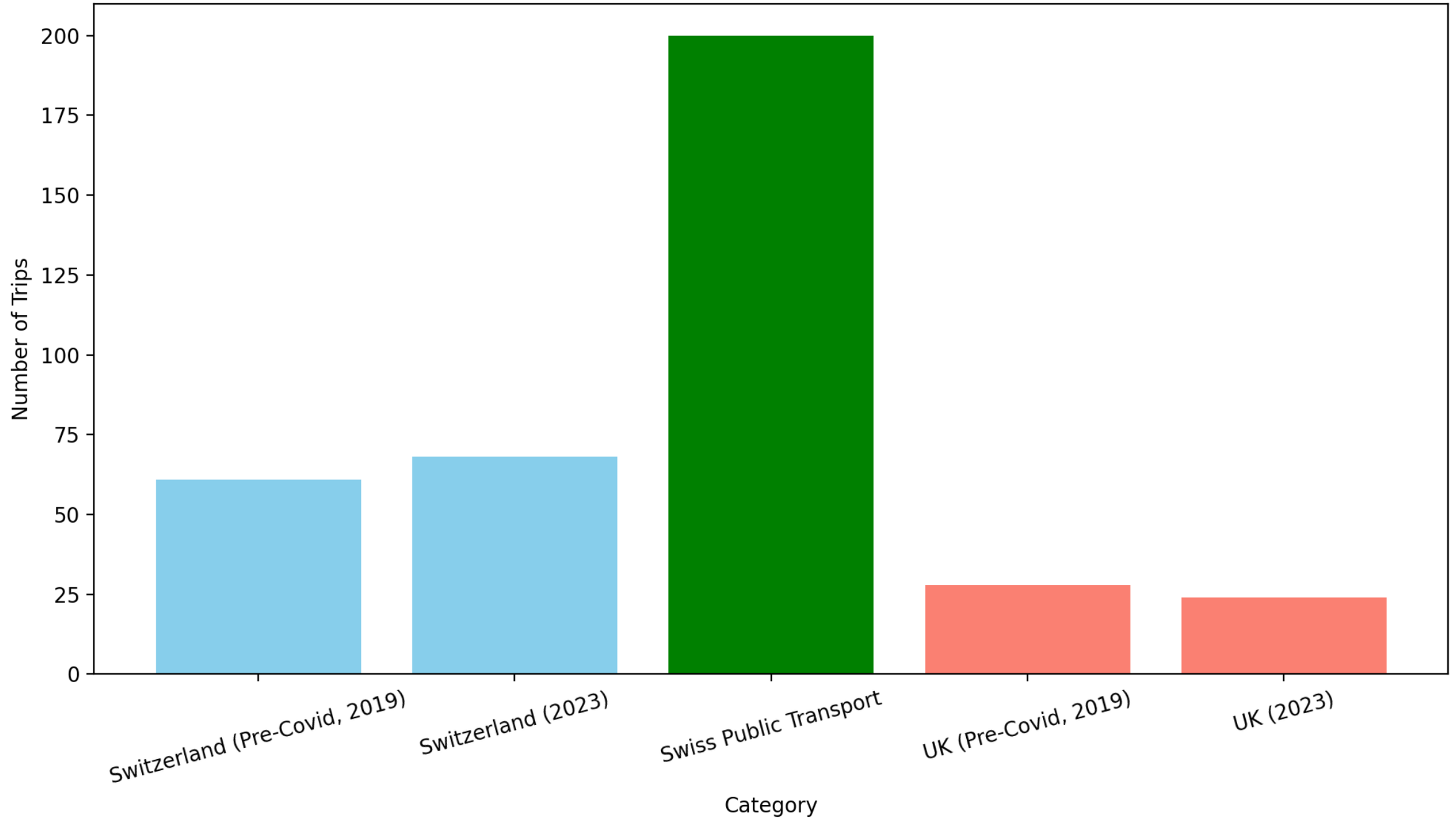








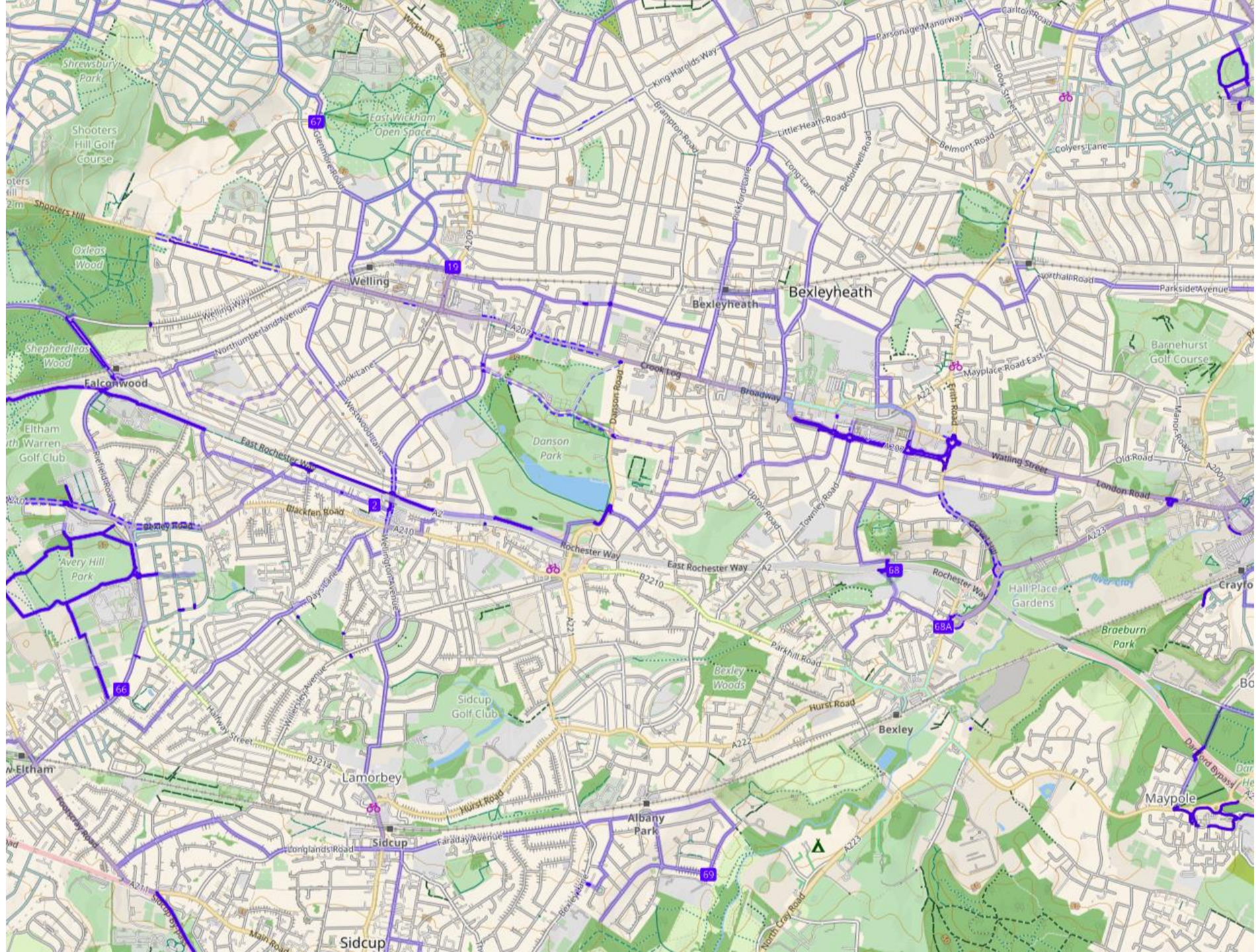
Average Train Trips per Year and Total Public Transport Trips

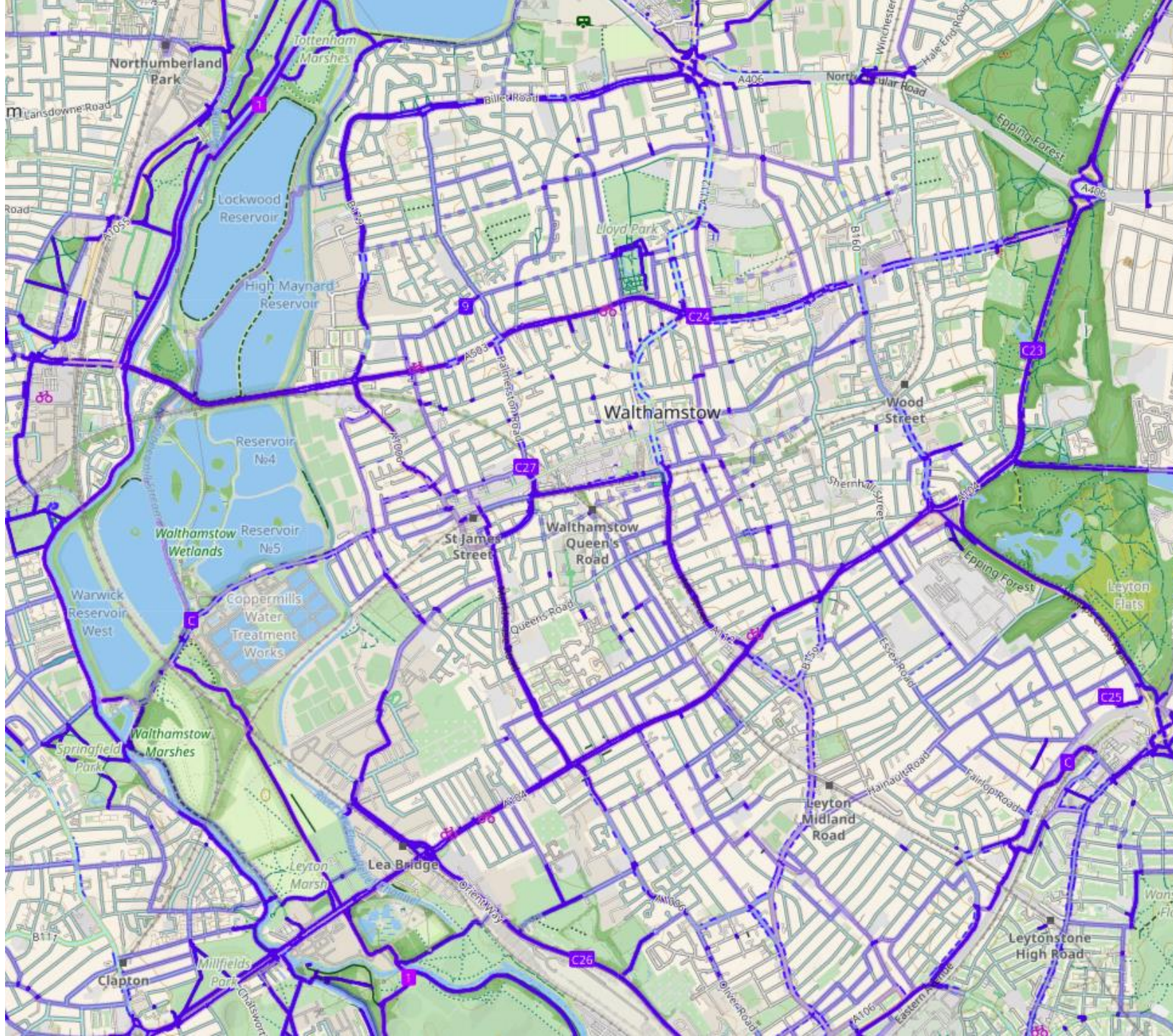
















Thomas Ableman ✓ · You

Helping transport leaders cut through bureaucracy to deliver visible wins
4mo · 🌐

Last week, I stayed in a Swiss village of just 475 people.

But despite its size, Paspels is served by half-hourly buses from 5am to 11pm, every day, including demand-responsive services late at night. The buses are punctual, well-used and fully integrated with the national rail network.

It's not a one-off. It's normal. This is how Switzerland does rural transport and it works.

In the UK, we often treat rural transport as an unsolvable riddle. But maybe the answer isn't radical innovation - it's just reliable buses, designed to connect.

So here's my challenge: what if your area became a Mini Switzerland?

Think Mini Holland (which transformed my home patch of Walthamstow), but for buses. Clear connections, integrated timetables, punctual services - and the freedom to live without a car, even in a small village.

I've written about my time in Paspels - and how we can apply the lessons - in my latest blog post:

👉 <https://lnkd.in/eE2ZtSz3>

I realise that big ambitious goals can seem scary. But, actually, they're the essential first step to change. I'm offering three free consultancy sessions to help a local area get started.

Let's make something special happen!

#transport #publictransport #buses #ruralmobility #switzerland #innovation
#leadership #placemaking #miniswitzerland



👤👤 Mostafa Ayman Ilham and 251 others

94 comments · 13 reposts

Reactions



👍 Like

💬 Comment

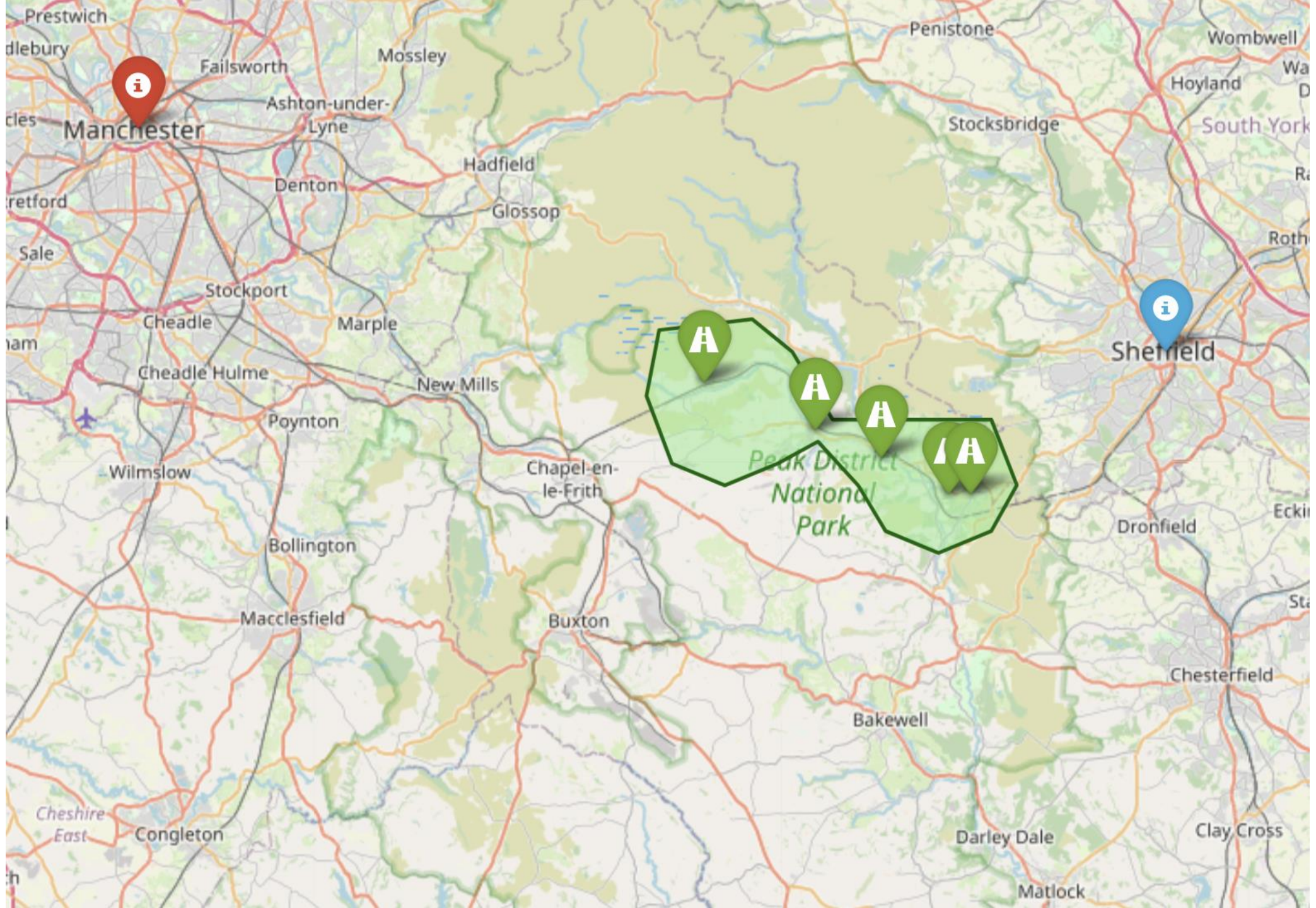
🔄 Repost

➦ Send



35,868 impressions

[View analytics](#)



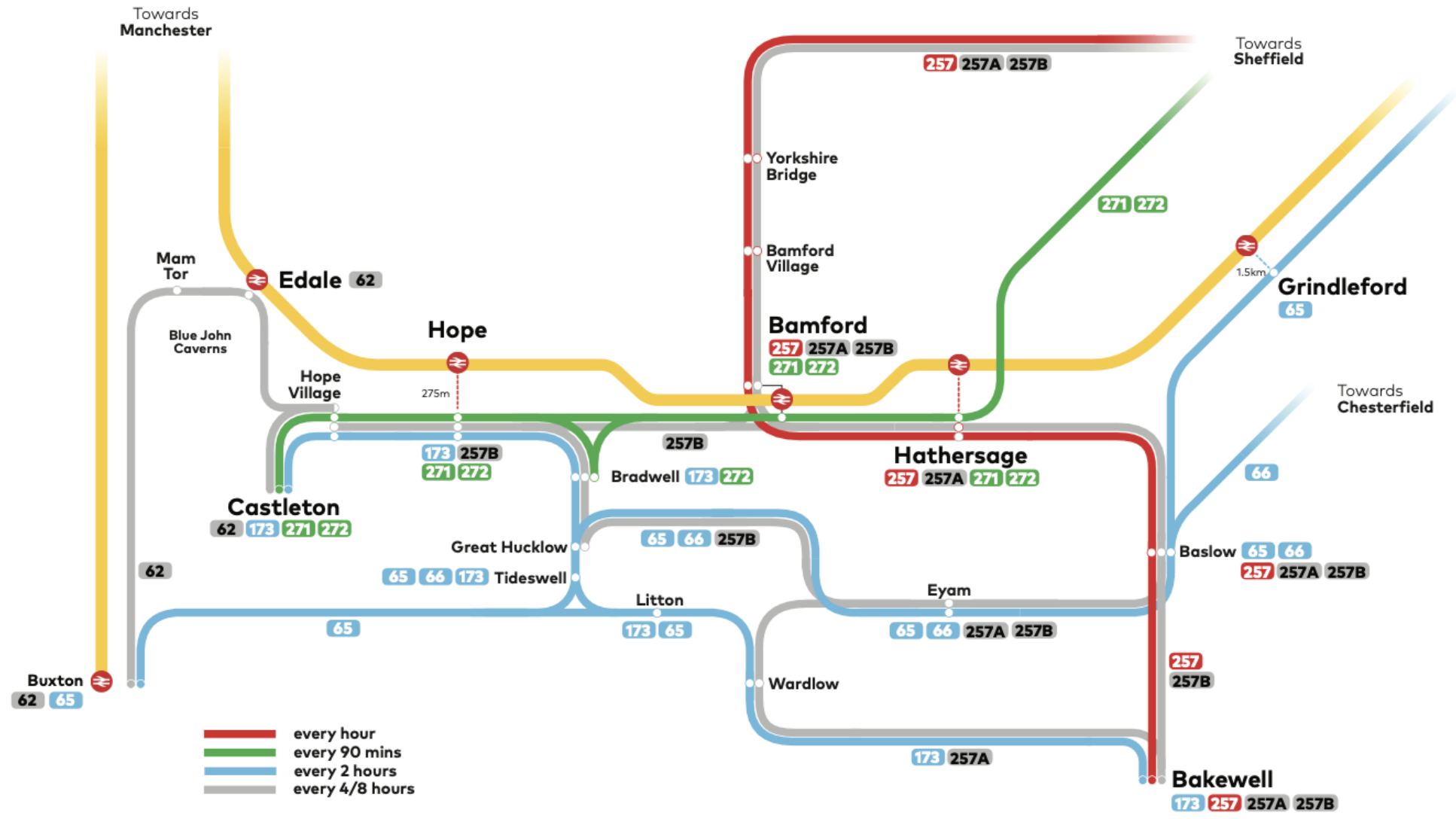


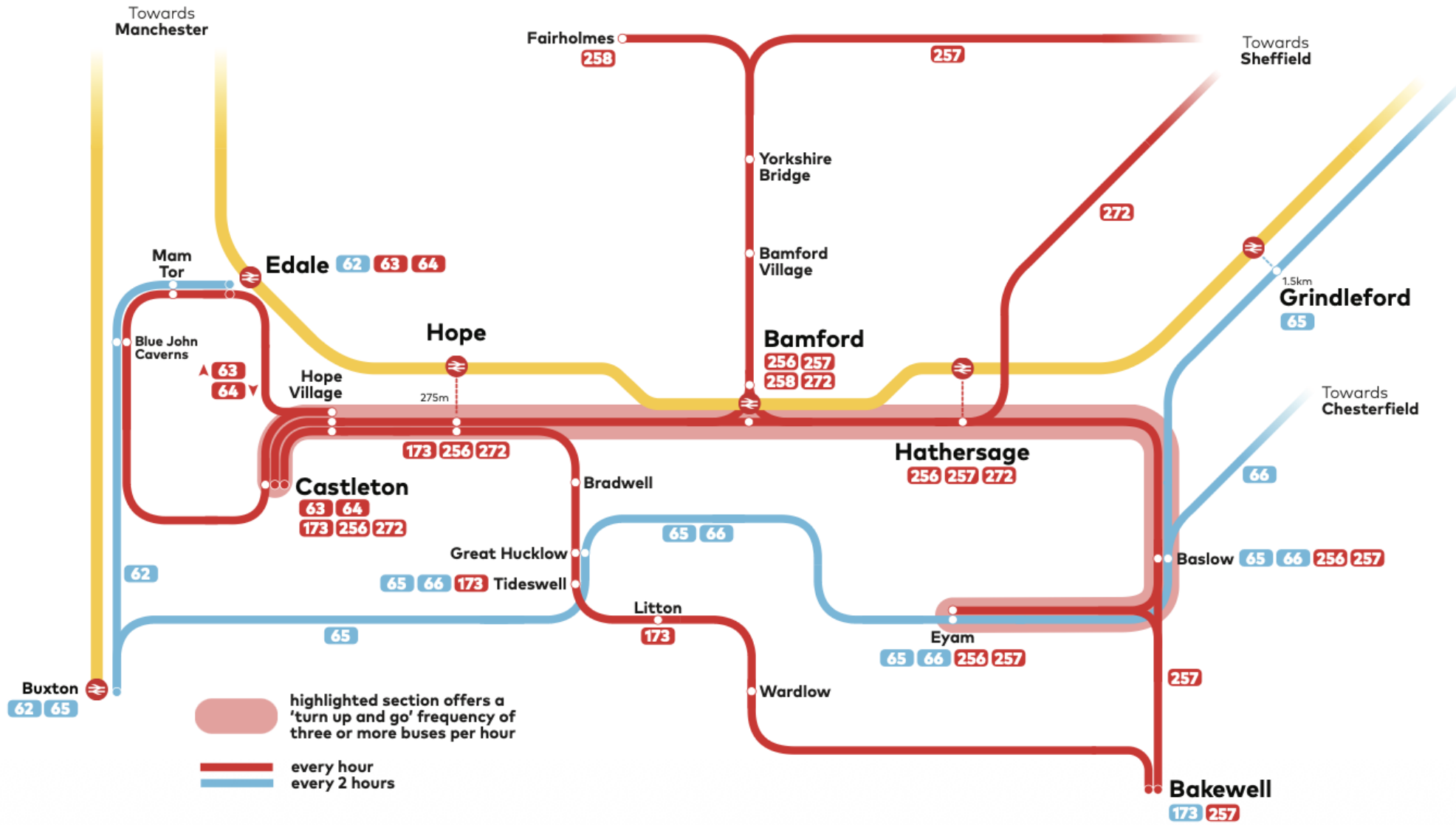
**Foundation for
Integrated Transport**

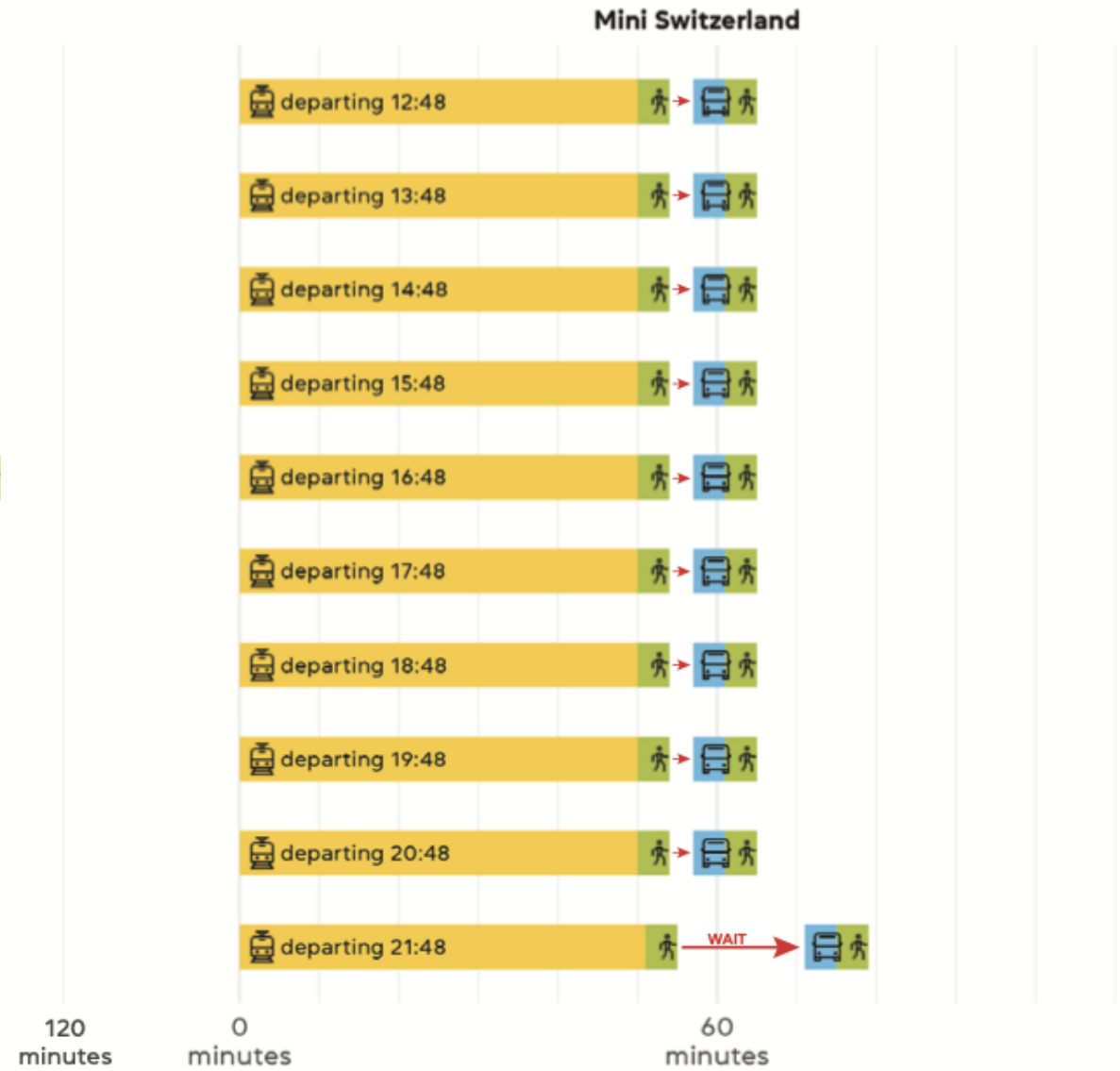




- Integrated bus and rail timetables
- Integrated bus and rail ticketing
- Physically integrated bus and rail interchanges
- All services running every hour
- Exceptional punctuality
- High quality of service delivery
- Pride







Timings from Travelline (Friday 5 December 2025) and the Mini-Switzerland proposal.

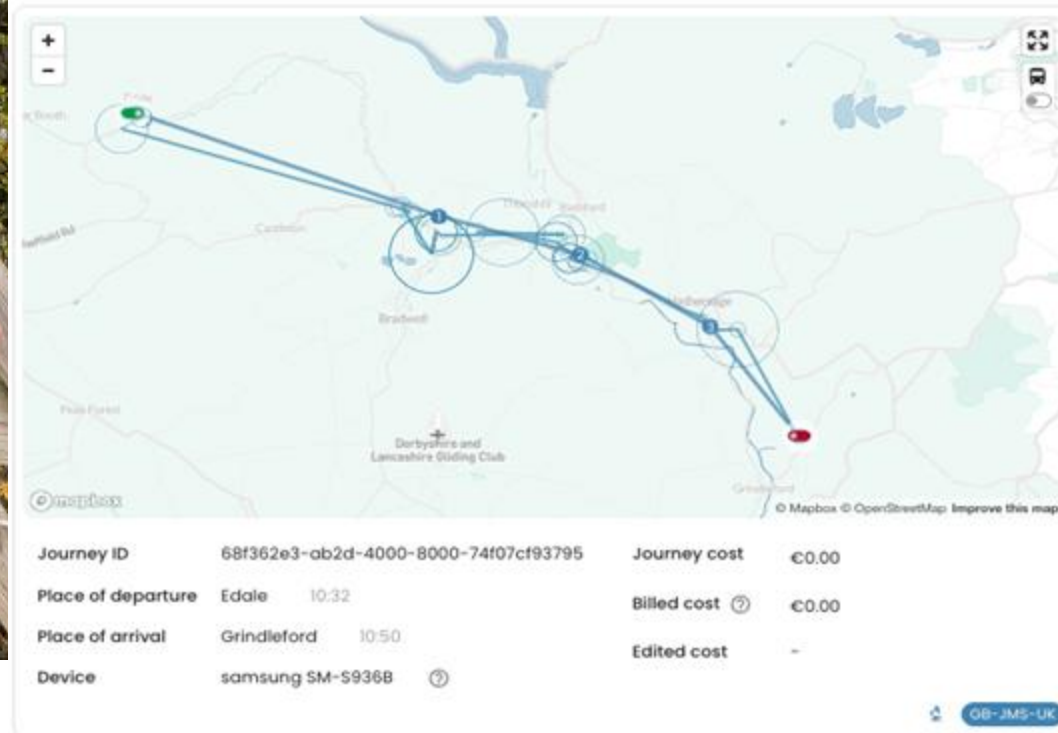




GPS Survey



JOURNEY DETAILS



Latest version

Action

EDIT JOURNEY RECOMPUTE PRICE

This route was correctly resolved ?

18/10/2025

Hide timeline events

00:00:00 ← Check-in

Manchester Piccadilly - Sheffield / New Mills Central / Chinley

00:07:57 ② Edale

00:13:17 ① Hope (Derbyshire)

00:17:08 ② Bamford

00:21:08 ③ Hathersage

00:25:08 ④ Grindleford

00:25:30 → Check-out





FREEWHEELING

Thomas Ableman
Founder, Freewheeling

former Director of Strategy & Innovation, Transport for London



MINI-SWITZERLAND

**Presentation on an Integrated Transport
Demonstrator**

TTG | Tuesday 18th March 2026

www.freewheeling.info