



Dr Tan Yeow Kee (Yuki)
+ 65 9230 1808 • yeowkee@sound-eye.com



**Estimated older adults fall
annually (Worldwide)**

385 million

**One in three older adults will fall &
approximately 646,000 older
adults die from falls each
year around the world**

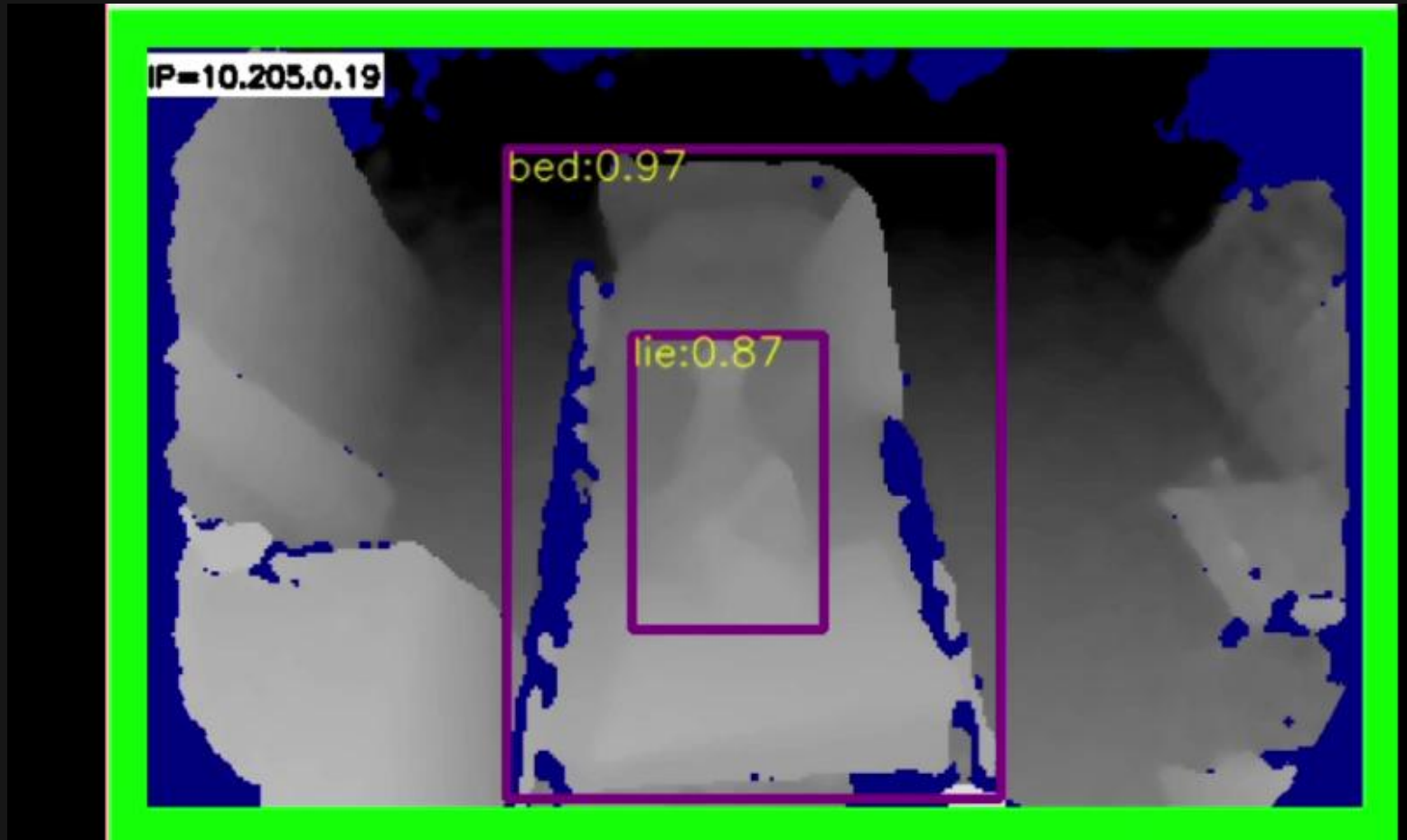
**Annual hospitalisation cost due
to older adults fall (Worldwide)**

USD\$297b

Source: World Health Organisation &
Centers for Disease Control and Prevention,
International Osteoporosis Foundation

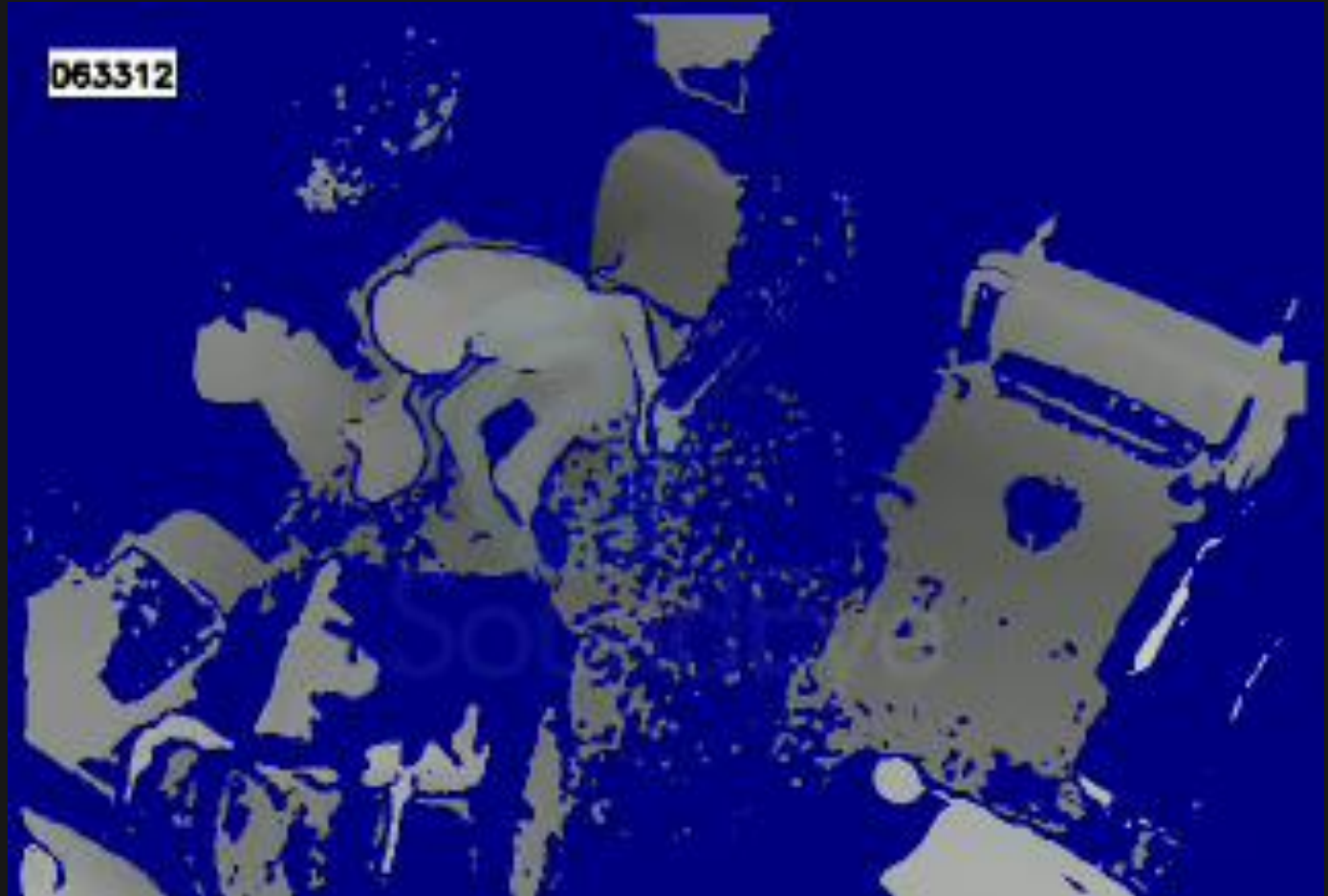
LASSO

Low resolution depth imaging



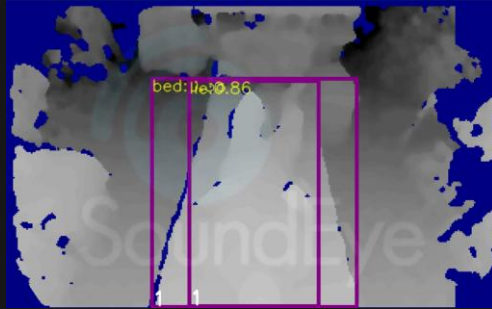
Preserve Privacy

No camera
No software masking
Depth imaging technology



The image shows an elderly person using the washroom, and depth imaging technology preserves privacy without the use of software masking

Body Posture Recognition



Lying on the bed



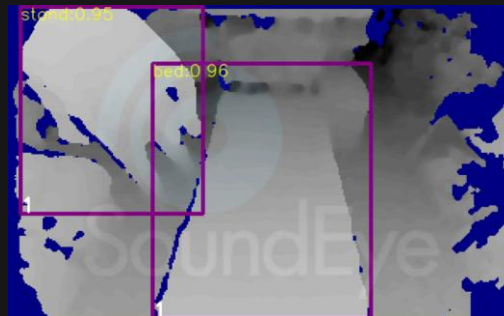
Sitting on the bed



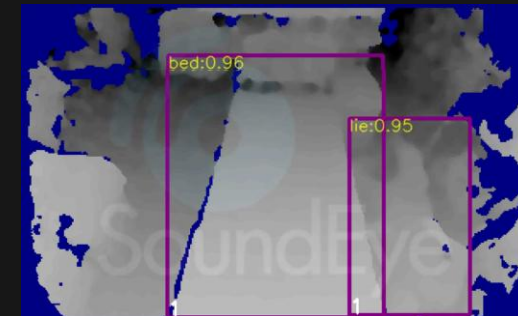
Sitting on the right side of the bed



Sitting on the left side of the bed



Sit-to-stand from the bed



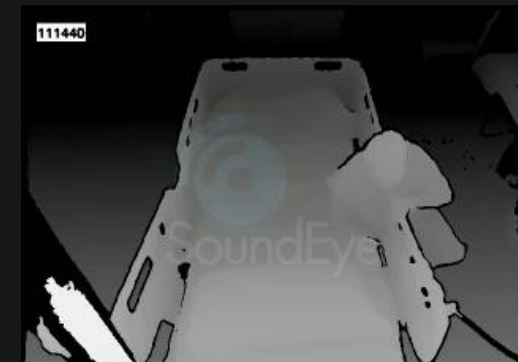
Fall Detection



Standing on the bed



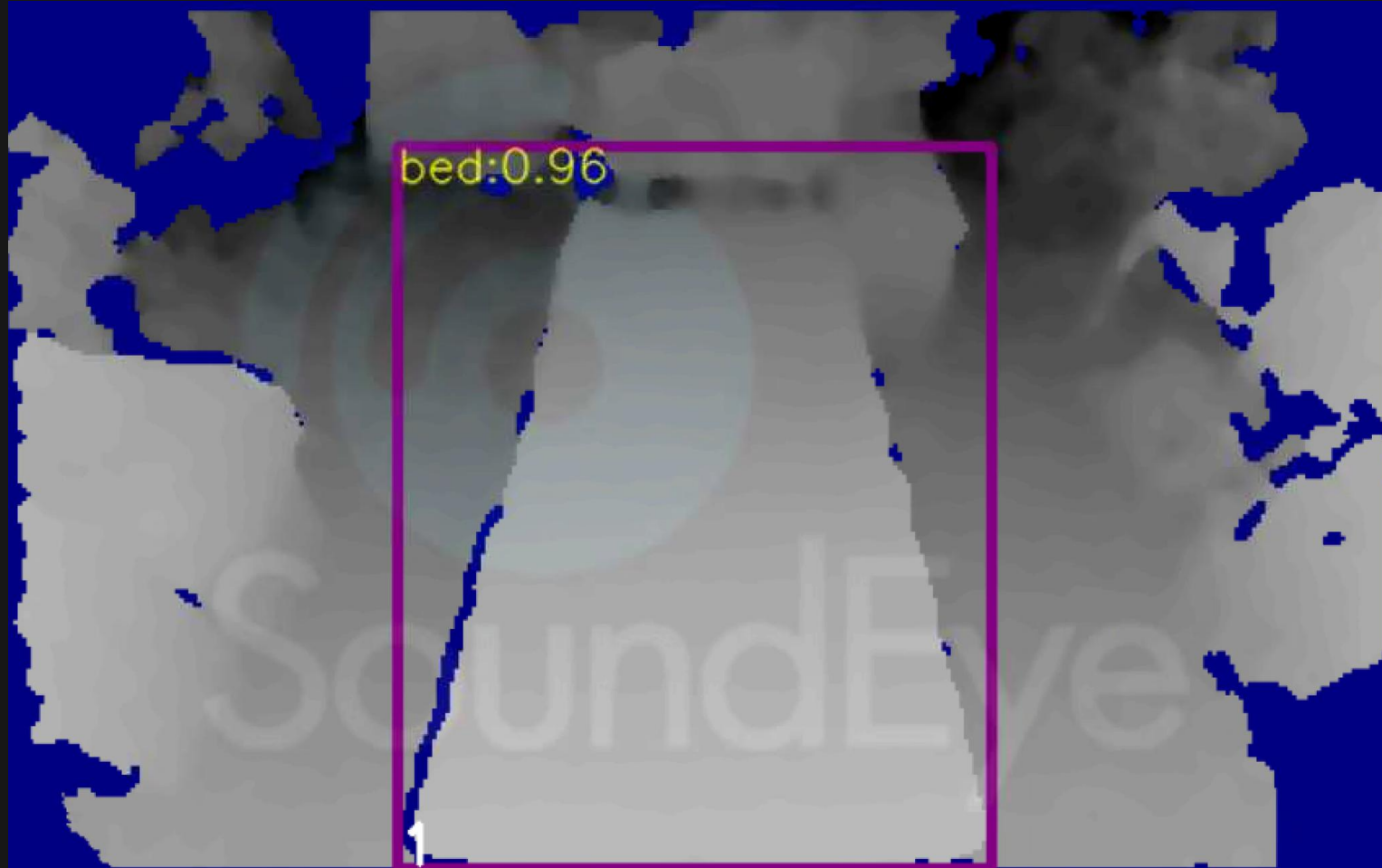
Kneeling on the bed



Stuck at side rail

Auto-Bed Recognition

LASSO will still work even the bed is not placed properly in the real-world.



Two-Bed Monitoring





Jurong Community Hospital

95%

Bedside Monitoring: faster responses

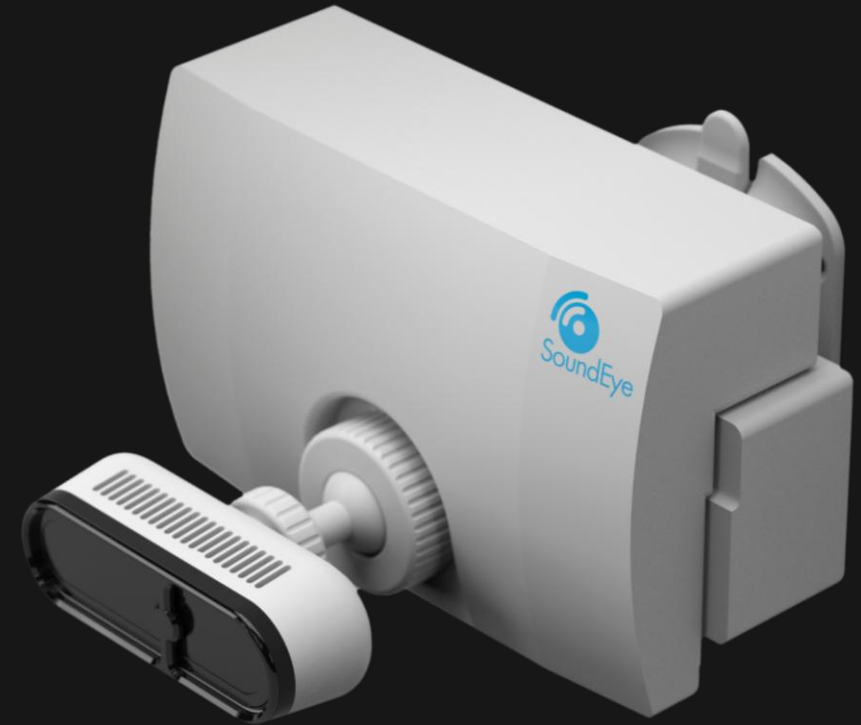
87%

Nurses found LASSO seamlessly integrated into their daily workflow

91%

Toileting/Showering: observed improved response times

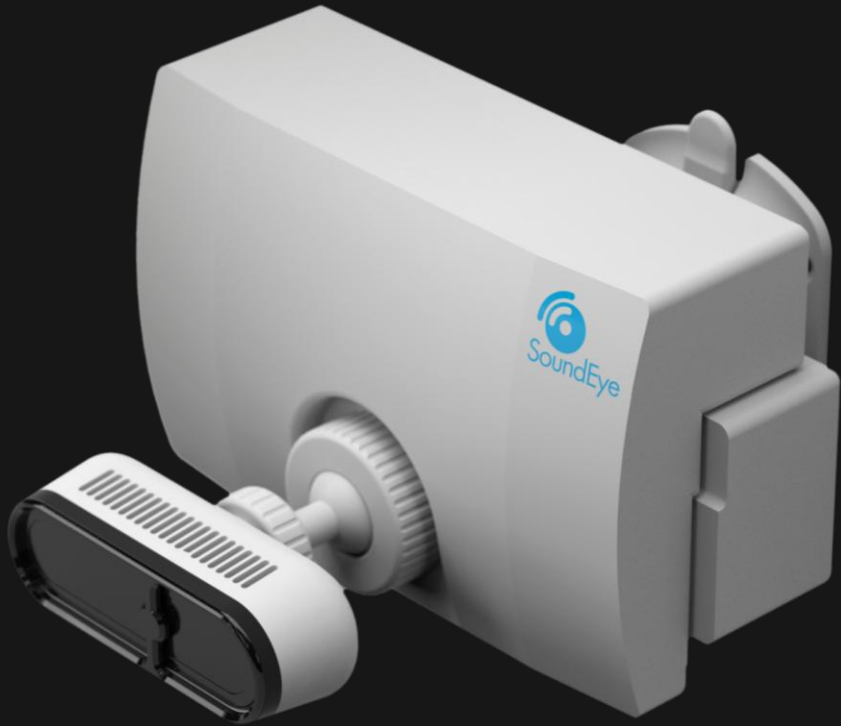
3 months of usage with 23 nurses





Ren Ci 仁慈

(Based on 1-Jan till 18-Apr 2025)



2,748

Alerts triggered

99%

Accuracy rate⁺

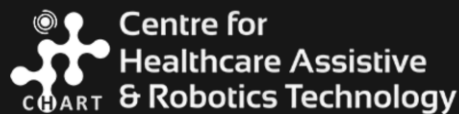
+ over **1.5 million** images collected in the real-world to train the AI model



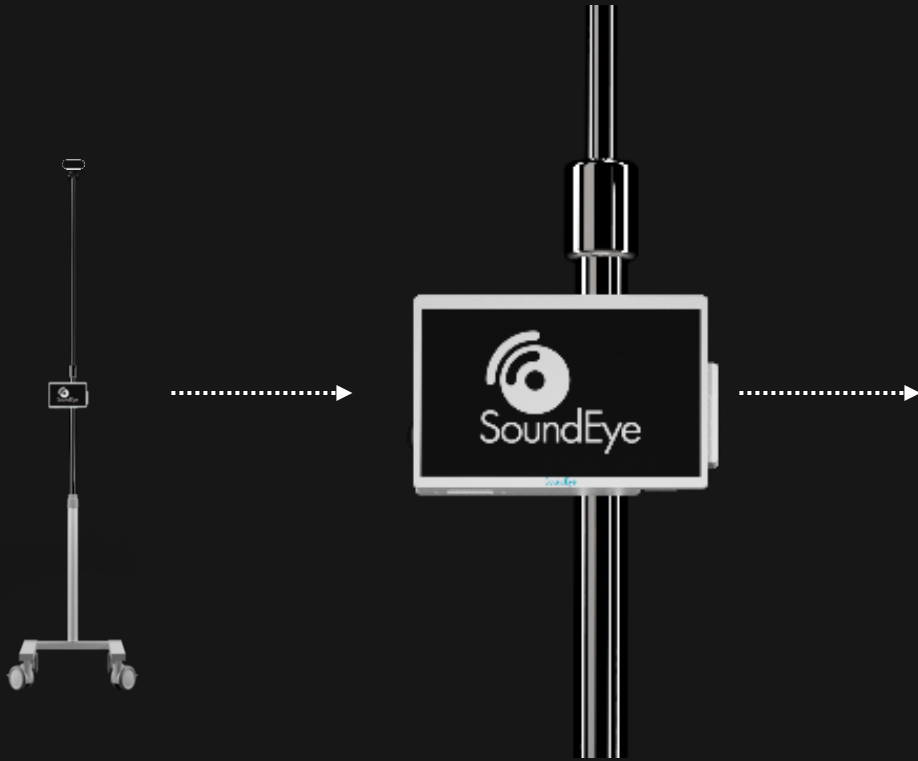
100,000

falls prevented

every year



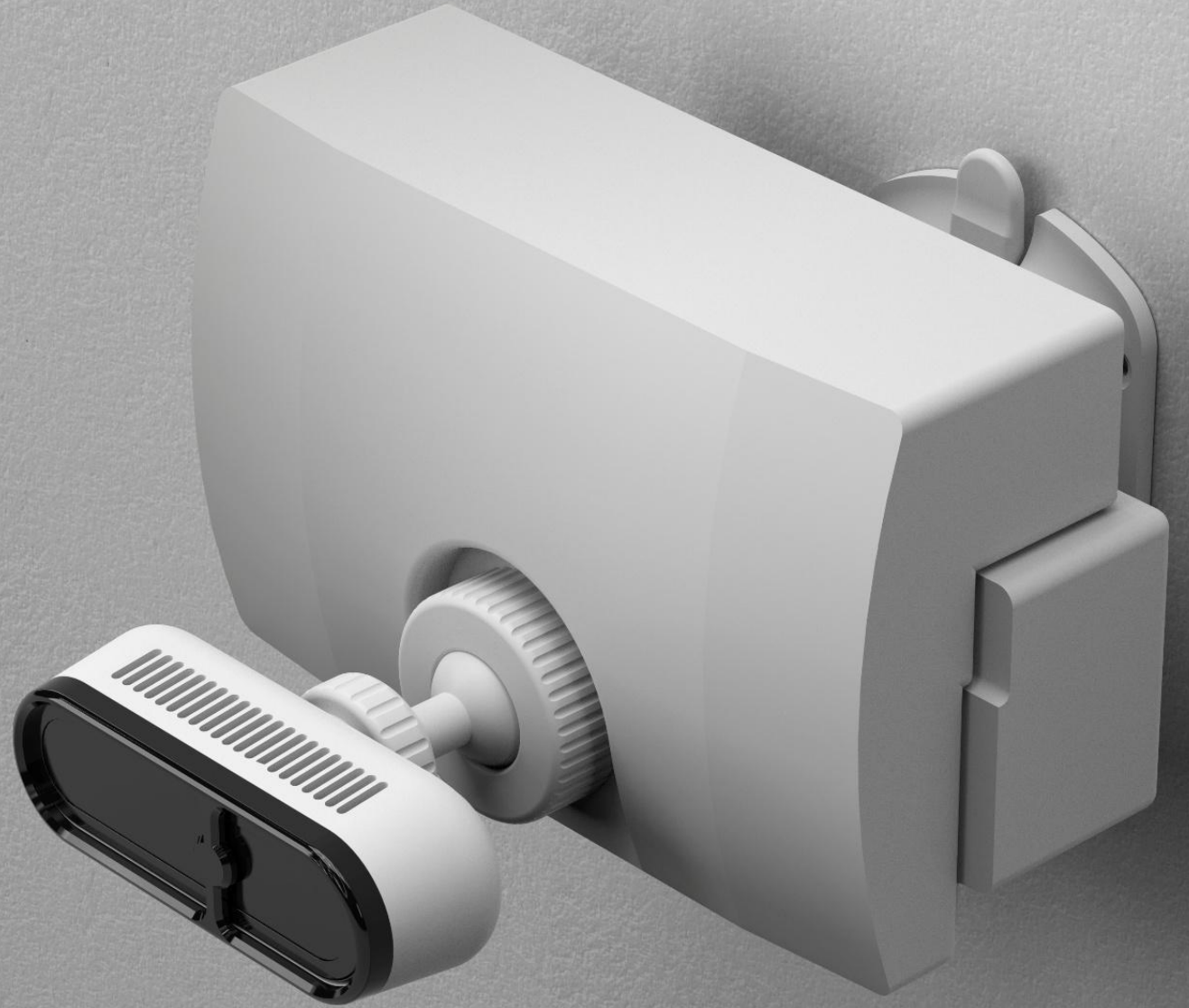
Edge Computing + Touchscreen



The screenshot shows the SoundEye touchscreen interface. At the top left, it displays the SoundEye logo, version 'ver: SG-S1-20251107', and DeviceID: 26192. On the top right, there are icons for a globe, a home button, and a power button. The main area is divided into four quadrants, each with an icon and text:

- Top-left: A location pin icon with the text '511号 村岡様' below it.
- Top-right: A Wi-Fi signal icon with the text 'WL-NOJI-a' below it.
- Bottom-left: An icon of a person in a bed with the text '離床 (複数人いてもアラート)' below it.
- Bottom-right: A bell icon with the text '転倒 & 離床' below it.

A large right-pointing chevron icon is located on the right side of the interface.



Thank you



SOUNDEYE
サウンドアイ



Dr Tan Yeow Kee
Chief of screaming, falling and getting out of the bed!
+ 65 9230 1808 • yeowkee@sound-eye.com

