



**GLx GreyDx.AI**

# GreyDx CMS

The Ultimate Holistic AI Ecosystem in Medicine.  
Uniting the fractured pillars of healthcare.

# Engineered by Deep Tech

Governed by Clinicians



## Sufian Saidon – Founder & CEO

Bootstrapped the core IP and raised an initial milestone-based F&F round.



## Matthew Hillier – Operations Advisor

Driving operational execution and strategic scaling.



## Dr. Kaarthig Ganesamoorthy, Medical Advisor

Providing critical clinical oversight.

## Medical Advisory Board

Active medical practitioners dictating strict clinical logic and rigorous safety checklists.

# The Health Crisis



## Transactional Medicine

Legacy systems enforce "treat and release" care without long-term tracking.



## Siloed Systems

Patient health data is trapped in isolated software.



## The AI Vacuum

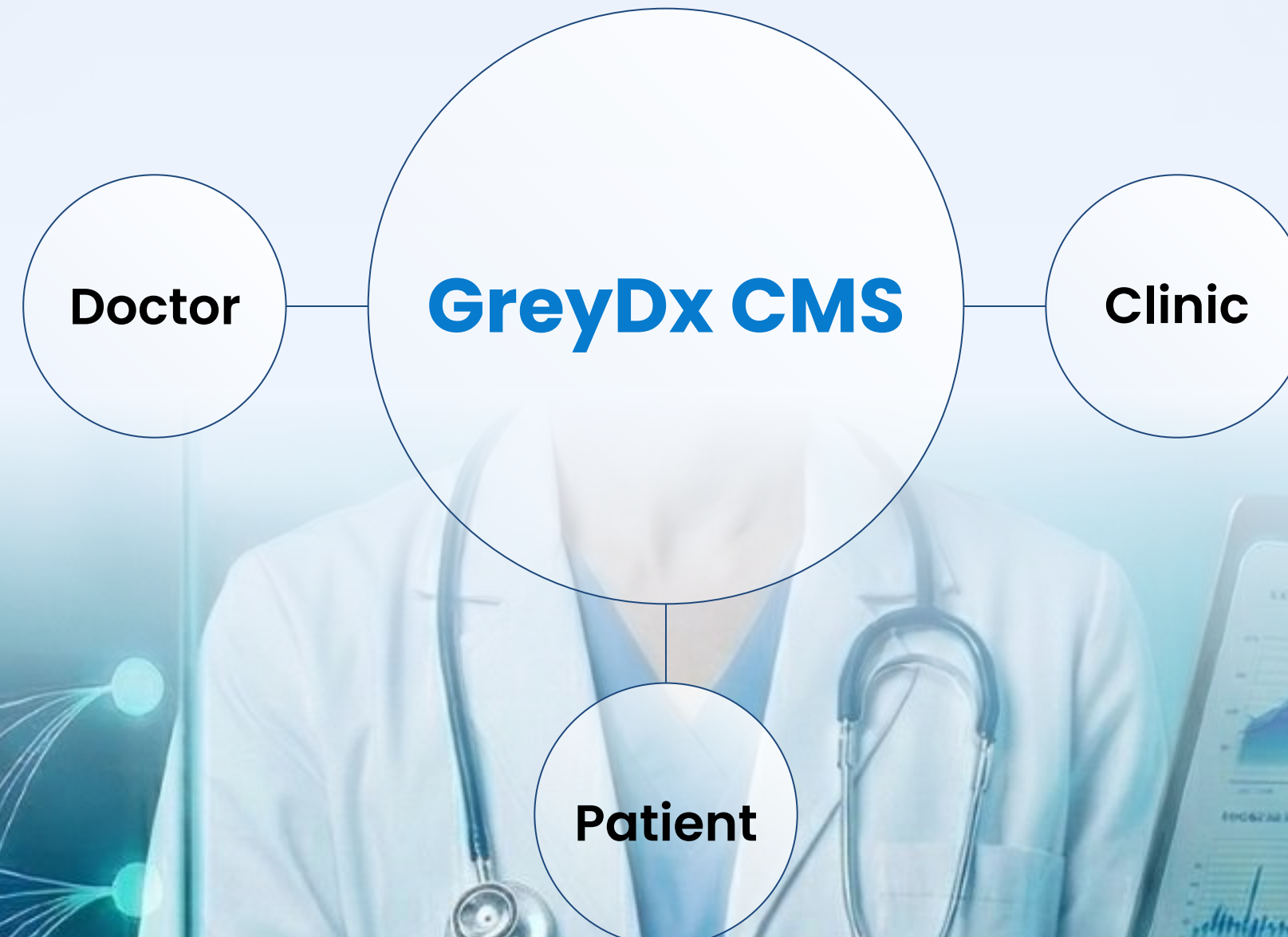
While general LLMs prove the demand for AI, their risk of "hallucinations" requires secure, vertical-specific architecture that standard tech cannot provide.





# Uniting the Core Pillars of Healthcare.

We are not just a management system; we are the central nervous system for the modern medical practice, providing the exact technological infrastructure required to shift toward value-based, preventative care.



# The End-to-End Consultation Process.



**A frictionless workflow built for clinical excellence.**

## Seamless Workflow

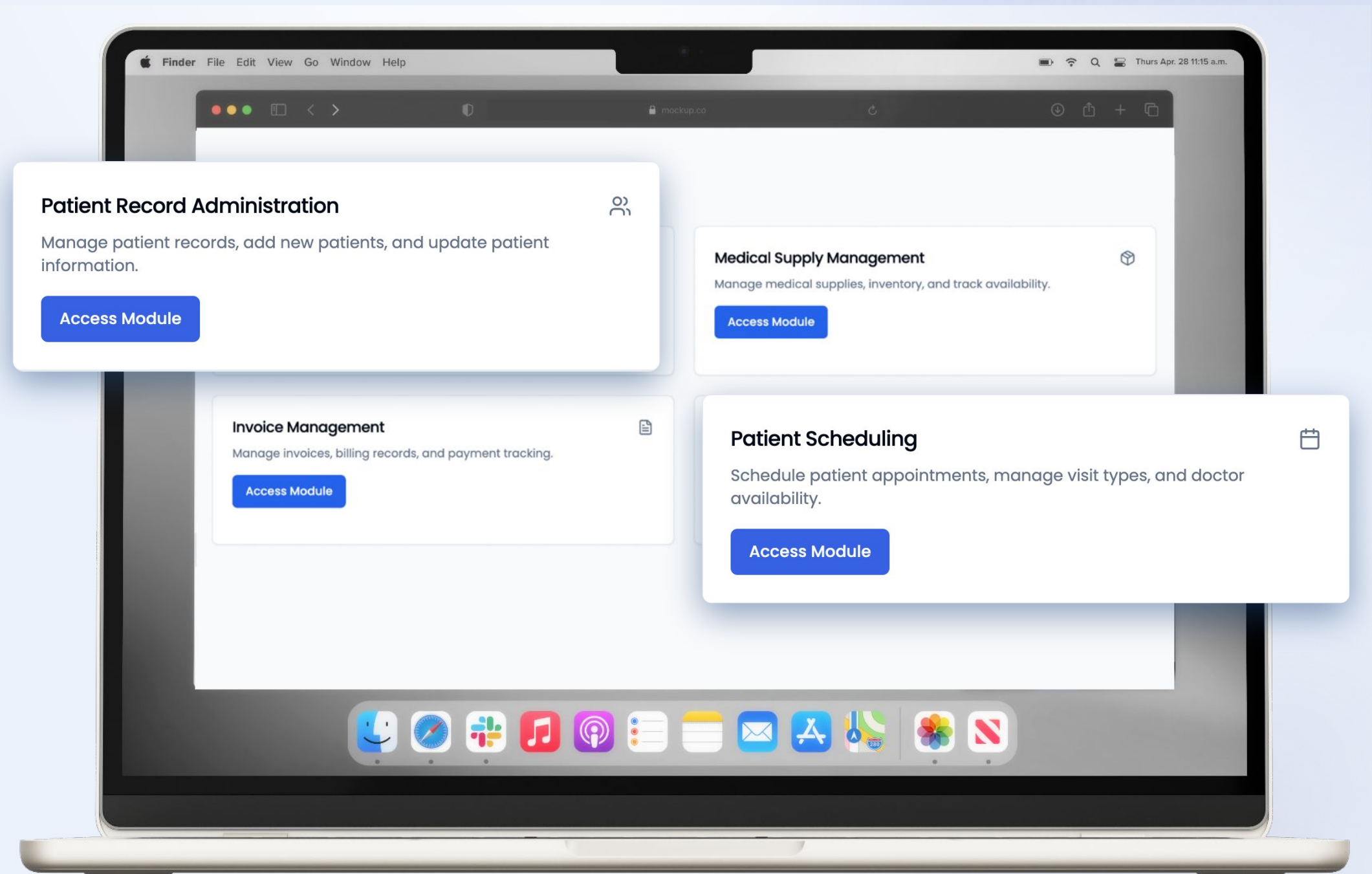
Master queue management and conduct consultations without administrative friction.

## Clinical Confidence

Leverage built-in tools and explainable AI to support accurate, definitive decision-making.

## Smart Automation

One-click document generation for medical certificates, referrals, and out-processing formalities like prescription dispensing.



# The Digital Twin (Continuous Bio-Tracking)

Ending the era of "treat and release."

## The Digital Twin

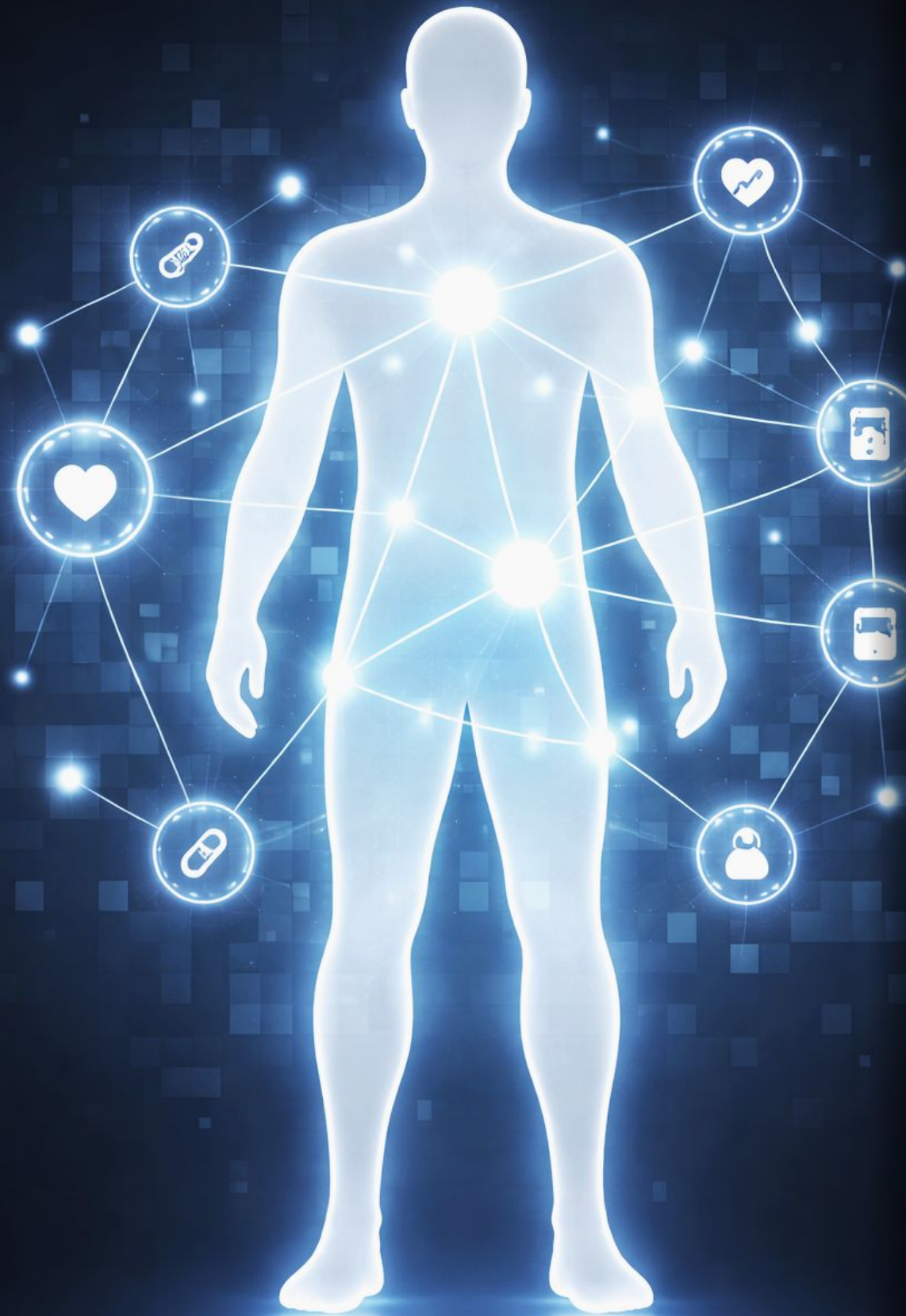
Our AI generates a continuously updated digital profile for every patient.

## Bio-Tracking

Leverage continuous AI bio-tracking to monitor long-term health metrics and customized regimens.

## Outcome-Driven

Ensure tangible, positive clinical outcomes rather than isolated transaction encounters.



# Operational Intelligence



Process daily clinical data to provide real-time, actionable context:

## Predictive Analytics

Anticipate clinic needs before they arise

## Strategic Operations

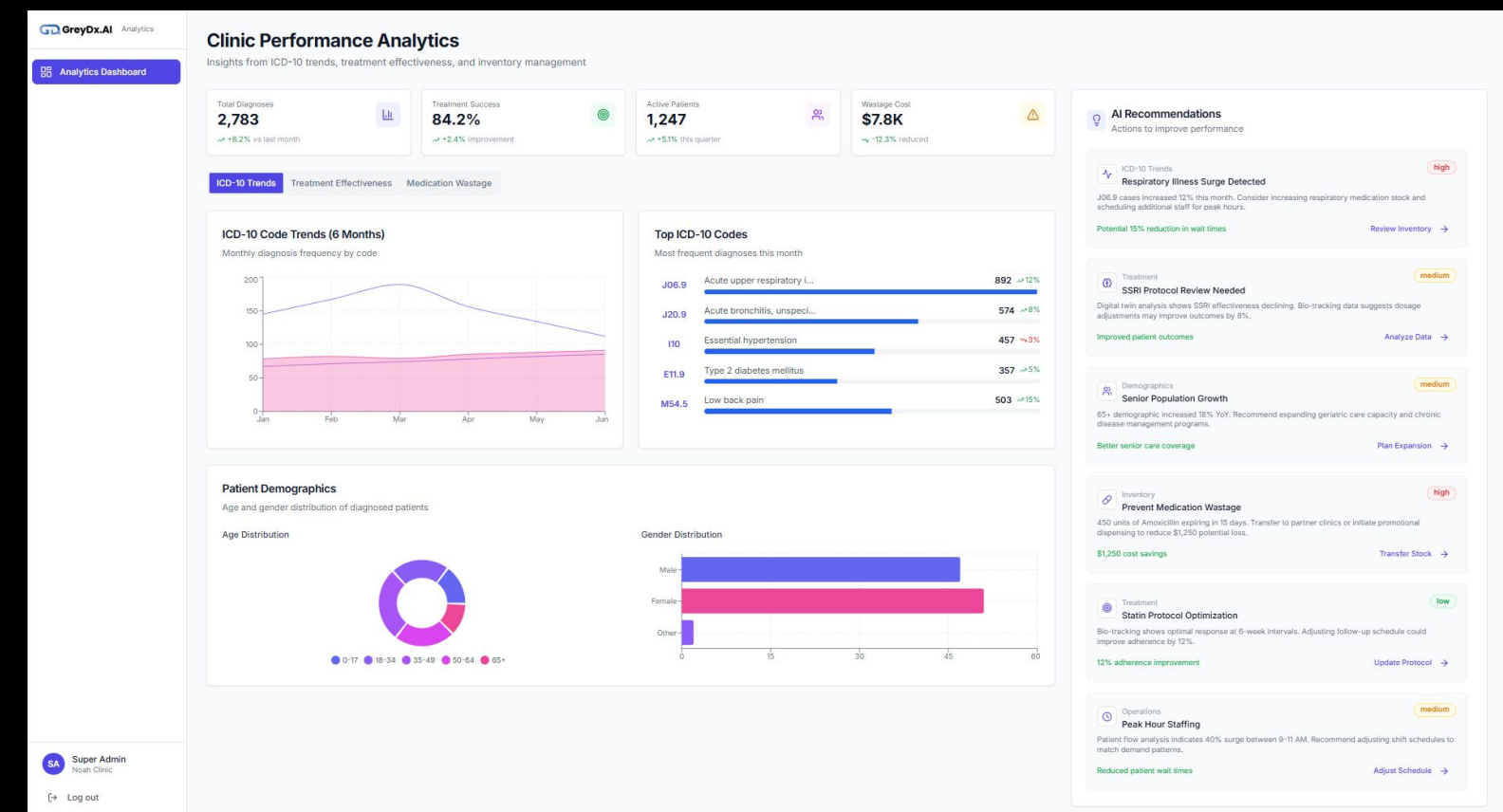
Map peak diagnoses and shifting patient demographics

## Inventory Optimization

Track hyper-local prescription demand to automate and optimize medical supply levels

Calling

Waiting	Calling
A024 A025 A026	A023



# Scaling From Daily Tasks to Long-Term Growth.



## DAILY

Real-time queue management, invoice management, and frictionless out-processing.



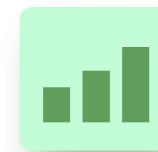
## WEEKLY

Predictive low-stock alerts and patient scheduling overviews.



## MONTHLY

Automated financial reconciliation and operational staffing optimization.



## YEARLY

Year-over-year demographic health trends and predictive financial forecasting.



# Tailored to Your Clinic's Growth

Choose the tier that fits your clinic's vision.

## GreyDx.AI CMS Essentials

*The core engine for high-volume clinics.*

**\*Crucial Administrative Functionalities:**

Invoice management, Inventory management, Patient Health Records management, and Patient scheduling.

- **End-to-End Consultation Process:** Queue management, Consultation interface, Document generation, and Out-processing formalities (prescription dispensing).

## GreyDx.AI CMS Ultimate

*GreyDx CMS Ultimate: The definitive infrastructure for value-based, preventative care. \*Includes everything in Essentials, PLUS:*

- **The Patient Digital Twin:** Continuous AI bio-tracking and long-term regimen mapping.
- **Operational Intelligence:** Predictive clinic analytics and advanced demographic mapping.

# The Infrastructure for Value-Based Care

**Legacy Volume-Based Care**



**GreyDx Value-Based Care**

The explosion of AI has proven the technology is ready, but healthcare requires vertical-specific trust. GreyDx fills the vacuum with a secure ecosystem that drives the global shift toward preventative health and optimal clinical ROI.



## The Future of Medicine Launches in Q3

Secure your position as a GreyDx Founding Partner today. Gain immediate sandbox access to our Foundation Edition now, and unlock a guaranteed, highly subsidized rate for the Q3 full-suite deployment.

<https://greydx.ai> | [info@greydx.ai](mailto:info@greydx.ai)