

可持续设计峰会
北京展览馆
以设计构建可持续未来

Sustainable Design China Summit
Beijing Exhibition Center
Shaping A Sustainable Future By Design

Sustainable
Design China
Summit
可持续设计峰会

in partnership with

Audi



SDS



关注微信公众号，获取最新行业资讯！
FOLLOW US ON WECHAT
GET THE LATEST UPDATES AND NEWS!



SDS SUMMIT
BROCHURE
SDS峰会手册

sustainabledesignchina.com

Sustainable
Design China
Summit
可持续设计峰会

in partnership with

Audi

Beijing Exhibition Center
北京展览馆

Shaping a sustainable
future by design
以设计驱动可持续未来



奥迪 e-tron GT 电入佳境

#突破进抵新境



广告



一汽奥迪



欢迎来到可持续设计峰会

WELCOME TO SUSTAINABLE DESIGN CHINA SUMMIT

欢迎参加第二届“可持续设计峰会”，这是一个聚集了全球领先的设计师、建筑师、可持续创新者和决策者的盛会，旨在通过设计来构建可持续的未来。作为展会总监，我为您的到来而感到兴奋和自豪。

我们一直关注永续发展，并承诺为此努力奋斗。这个峰会的使命是建立一个国际性的平台，聚集可持续意见领袖和设计专家，共同探讨自然友好创新、可持续材料的使用、循环再生战略以及具有突破性的净零设计理念等议题。我们将从多个角度，包括设计、政策、文化、科技、生态和商业等方面，深入广泛地探讨可持续理念，引领社会各界思考并践行长期永续发展。

在这个峰会上，您将有机会与世界各地最杰出的思想领袖和创新者交流互动，分享您的见解和经验，共同构建一个更加可持续的未来。我们期待与您一同探索、学习和启发，为可持续设计做出更大的贡献。

再次感谢您的参与，希望您在峰会中度过愉快而富有启发的时光。

We are delighted to welcome you to the second edition of the Sustainable Design China Summit, a gathering of leading designers, architects, sustainability innovators, and decision-makers from around the world. Our mission for this summit is to establish an international platform that brings together sustainable thought leaders and design experts to collectively explore topics such as nature-friendly innovation, sustainable material usage, circular regeneration strategies, and groundbreaking net-zero design concepts. We will delve into the concept of sustainability from various perspectives, including design, policy, culture, technology, ecology, and business, fostering broad and deep discussions that lead society to contemplate and pursue long-term sustainability.

At this summit, you will have the opportunity to engage with the most outstanding thought leaders and innovators from around the world, sharing your insights and experiences to collectively build a more sustainable future. We look forward to exploring, learning, and inspiring together with you, contributing to the field of sustainable design.

Thank you once again for your participation, and we hope you have a pleasant and inspiring time at the Sustainable Design China Summit.

谭卓
Zhuo Tan
董事总经理
Managing Director

目录 Contents

关于可持续设计峰会
About Sustainable Design
China Summit
5-6

6大前瞻峰会主题
6 Forward-thinking Themes
7-8

案例呈现
Case studies
11-28

特别策划
Feature
29-32

日程安排
Agenda
33-46

赞助商 & 合作伙伴
Sponsors & Partners
47-48

参展品牌
Exhibitors
49-58

峰会平面图
Floorplan
59-60

观众亮点
Delegates Highlights
61-62



关于“可持续设计峰会”2023 ABOUT SUSTAINABLE DESIGN CHINA SUMMIT 2023

第二届“可持续设计峰会”于2023年9月21-23日在北京展览馆举行，汇聚全球领先的设计师、建筑师、可持续创新者和决策者，通过设计构建可持续的未来。秉承对永续发展的关注及承诺，“可持续设计峰会”致力打造汇聚可持续意见领袖及设计领域专家的前沿阵地和国际性平台，聚焦自然友好创新、建筑领域里可持续材料的使用、循环再生战略以及具有突破性的净零设计理念，从设计、政策、文化、科技、生态和商业等多维度视角探索可持续理念的深度与广度，引领社会各界思考并践行长期永续发展。

The second Sustainable Design China Summit will be held from September 21 to 23, 2023, at the Beijing Exhibition Center, bringing together leading global designers, architects, sustainability innovators, and decision-makers. With a strong commitment to sustainable development, the summit aims to establish an international platform that gathers thought leaders in sustainability and experts in the design field. This summit will focus on nature-friendly innovation, sustainable material usage in architecture, circular regeneration strategies, and groundbreaking net-zero design concepts. From various perspectives, including design, policy, culture, technology, ecology, and business, it will explore the depth and breadth of sustainable ideas, guiding society to contemplate and actively pursue long-term sustainability.

开放时间 OPENING TIME

2023年9月21日（周四）9:00-17:30
2023年9月22日（周五）9:00-17:30
2023年9月23日（周六）9:00-17:30

21 September 2023 Thursday 9:00-17:30
22 September 2023 Friday 9:00-17:30
23 September 2023 Saturday 9:00-17:30

更多信息请访问官网：
Visit our website for more information:
<https://www.sustainabledesignchina.com/cn>

6大前瞻峰会主题 6 FORWARD-THINKING THEMES

“可持续设计峰会”2023是一个国际性论坛，旨在聚集设计领域专业人士、建筑师和可持续发展领域的创新者，共同深入探讨如何将积极的环境、社会 and 循环战略融入城市和乡村的发展政策与建筑设计之中。作为城市和乡村发展的关键推动力量，建筑师、房地产开发商和城市规划师肩负着重要的责任，需要将这些积极因素有机地融入他们的工作，为下一代创造更为宜居的生活环境。

本峰会将呈现全球设计行业在可持续设计领域的卓越创新，包括气候科技、碳减排技术、办公室设计、酒店设计、循环设计策略以及前沿产品设计等多个领域。我们致力于在设计和建筑过程中减少对环境造成的不利影响，共同致力于实现COP27所设立的可持续发展新目标。

可持续设计峰会将深入探讨6个驱动全球可持续发展变革的核心议题：

1. 设计可持续世界
2. 循环设计思维
3. 零碳之“道”
4. 构筑绿色未来
5. 全方位的绿色酒店
6. 人性化办公

Orianna Fielding
首席可持续顾问，
可持续设计峰会2023

The Sustainable Design China Summit 2023 is the international forum for designers, architects and innovators in the world of sustainability to gather together to discover and discuss the latest developments in designing a sustainable future.

The summit will showcase global innovations in sustainable design, climate-tech, carbon reduction technologies, workplace design, hospitality, circular design strategies and pioneering product design that have been developed to meet the new COP27 sustainability targets.

This year the Sustainable Design Summit will explore 6 new core themes that are driving global Sustainability initiatives:

1. Designing a Sustainable Future
2. Circular Design Matters
3. On the Path to Net Zero
4. Towards a Greener Future
5. Holistic Hospitality
6. The Empathic Workplace

Orianna Fielding
Chief Sustainability Advisor
Sustainable Design China Summit 2023



1

设计可持续世界
DESIGNING A
SUSTAINABLE WORLD

2

循环设计思维
CIRCULAR DESIGN
THINKING

3

零碳之“道”
ON THE PATH TO
NET ZERO

4

构筑绿色未来
TOWARDS A
GREENER FUTURE

5

全方位的绿色酒店
HOLISTIC
HOSPITALITY

6

人性化办公
THE EMPATHIC
WORKPLACE





1

设计可持续世界 DESIGNING A SUSTAINABLE WORLD

疗愈与可持续共融的绿色医院
Green Hospital: Fusion of Healing
and Sustainability
11

公园里的新天地
New World in the Park
12

2

循环设计思维 CIRCULAR DESIGN THINKING

地球的生动，从骑行开始！
Cycle for Planet
13-14

3

零碳之“道” ON THE PATH TO NET ZERO

城市之美与历史传承的完美融合
A Fusion of Urban Beauty and Historical Heritage
15

零碳乡村转型
Zero-Carbon Rural Transformation
16

独一无二的可持续生态园林
A One-of-a-kind "Industrial
eco-garden"
17

重新定义亲海宜居生活
Redefining the Sea-friendly and
Livable Life
18

4

构筑绿色未来 TOWARDS A GREENER FUTURE

中国第一座零碳奇迹
China's First Zero-Carbon Marvel
19-20

成都未来之城：打造城市新地标
Future City of Chengdu: A Grand
Complex for a New Urban Landmark
21

让恐龙遗址焕发发生机的生态设计
Revitalizing Dinosaur Sites with
Eco-Design
22

5

全方位的绿色酒店 HOLISTIC HOSPITALITY

诠释现代家的温度
The Warmth of Modern Home
23-24

变幻之景：
原宿集·飞蔦集的可持续游牧生活
Shifting Scenery:
Sustainable Nomadic Living at Stray
Bird · Prairie
25

优雅与能效并重
Balancing Elegance and Energy
Efficiency
26

6

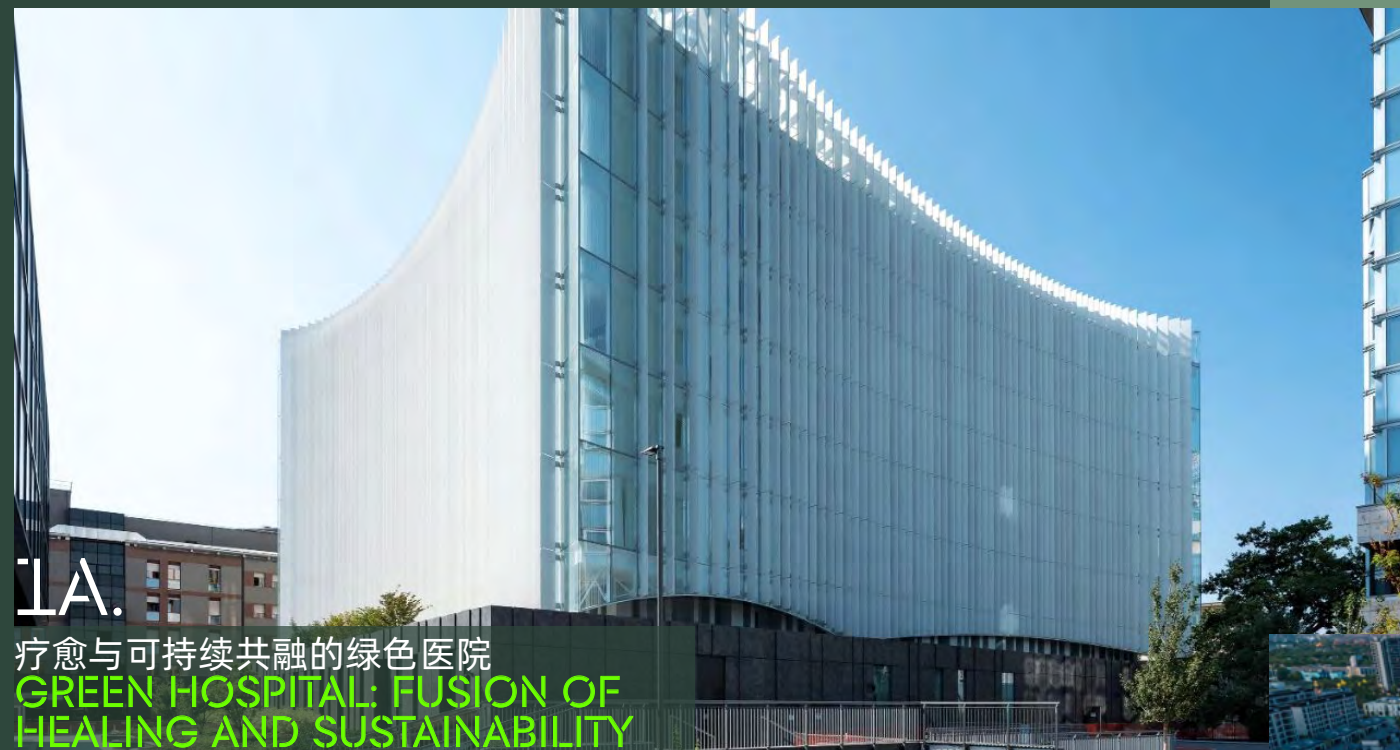
人性化办公 THE EMPATHIC WORKPLACE

重新定义工作空间
Redefine the Workplace
27

智慧立面赋能创新工作空间
Smart Facades Enrich Innovative
Workspaces
28

案例呈现 CASE STUDIES

1 设计可持续世界 DESIGNING A SUSTAINABLE WORLD



1A. 疗愈与可持续共融的绿色医院 GREEN HOSPITAL: FUSION OF HEALING AND SUSTAINABILITY

米兰圣拉斐尔医院新外科和急救中心的设计旨在追求与医院空间品质及其人性化要求密切相关的可持续发展理念。MCA将设计美学、医疗功能性、自然共生与绿色技术相结合，营造有感知、有自信、有归属感的温暖疗愈氛围，实现患者“生理”和“心理”的双重治愈。

新的外科和急救中心采用全玻璃幕墙，外表皮由双重生物气候功能的通高垂直陶瓷百叶编织而成。该材料在建筑的周围环境中发挥着积极作用，促进臭氧转化为氧分子，被誉为“会吸霾”的建筑。室内外均采用可再生材料和绿植，改善空气质量，为病患、家属、访客及医务工作者提供舒适和有助治愈的环境。

The design of the new Surgical and Emergency Center of San Raffaele Hospital aims to pursue the concept of sustainable development closely related to the quality of the hospital space and its humanised requirements. MCA combines design aesthetics, medical functionality, natural symbiosis and green technology to create a warm healing atmosphere with perception, self-confidence and a sense of belonging, and achieve dual healing of patients' "physiology" and "psychology".

Characterised by a building envelope entirely clad in glass, the new Surgical and Emergency Centre has a tightly woven facade made up of full-height vertical louvres which perform a dual bioclimatic function. The material plays

an active role in the building's surroundings, promoting the chemical transformation of ozone into oxygen molecules. It is known as a "smog-sucking" building. The use of recycled materials and greenery, both outside and inside, will further improve air quality and the well-being perceived by patients, staff, and visitors.

Details
项目名称 PROJECT NAME:
米兰圣拉斐尔医院新外科和急救中心
The New Surgical and Emergency Center of
San Raffaele Hospital

设计方 DESIGNED BY:
MCA 建筑事务所
Mario Cucinella Architects

项目完成年份 YEAR OF COMPLETION:
2021

空间设计在应对全球一些重大气候挑战中扮演着重要的角色。建筑环境负担着全球40%的排放和40%的自然资源利用。截至2020年，人造材料的总量超过了自然界生物总量。因此，建筑环境需要成为问题的解决者，而不是问题本身。自然友好的设计、生物多样性、海绵城市和被动式房屋设计都是推动可持续社会发展的关键策略。

Spatial design plays a significant role in some of the world's biggest climate challenges. The built environment is responsible for 40% of global emissions and for 40% of natural resource use. As of 2020, human-made materials exceed the total biomass of the natural world. The built environment needs to be part of the solution not the problem." Nature positive design, biodiversity, Sponge Cities and Passive House design are essential strategies to develop a sustainably driven society.

1B. 公园里的新天地 PANLONG TIANDI

Details
项目名称
PROJECT NAME:
上海蟠龙天地
Shanghai Panlong Tiandi

保护建筑 HISTORIC BUILDING CONSERVATION
DESIGN & RESEARCH INSTITUTE:
华建集团华东建筑设计研究院/ECADI

绿地景观设计
GREEN PARK DESIGN:
Sasaki

项目完成年份
YEAR OF COMPLETION:
2023



瑞安新天地旗下蟠龙天地坐落于上海虹桥商务区，以23万方绿地为基础打造“公园里的新天地”，通过在绿色、可持续、人性化设计上的不懈投入和可持续商业业态的引入，呈献一个舒适、友好、便捷和有呼吸感的城市微度假目的地。瑞安以卓越可持续城市社区建设为愿景，在蟠龙天地改造过程中，积极

对蟠龙市河进行治理，包括清淤、水生态修复、日常定期维护处理等；保留十字街区域的空间肌理，将众多老建筑修旧如旧，并采用绿色低碳建材，进行旧物循环再生利用；遵循生态优先原则，致力生物多样性保护，新栽植超6000棵树木，原动物亦出现回归现象。

Spanning an impressive 230,000 sq.m of green space, Panlong Tiandi was conceived as Xintiandi's Rural Reinterpretation of its successful urban regeneration projects and dedicated to green, sustainable and people-centric design. As a model project for suburban village renovation and heritage preservation, Panlong Tiandi has retained Panlong's water system and bridge culture and maintained its Cross Street layout. Historic landmarks were also restored to their former glory by utilising green, low-carbon building materials and the recycling of 12,500 sq.m. of old stones, 16,000 sq.m. of grey tiles and 1,500 sq.m. of grey bricks for construction. Adhering to its "ecology first" principle, during construction, Shui On undertook extensive measures to restore the Panlong City River to its former health and is committed to protecting the biodiversity of the native flora and fauna of the area.

案例呈现 CASE STUDIES



2A. 地球的生动，从骑行开始！ CYCLE FOR PLANET

从1986年，迪卡侬开始研发自行车。目前，全球有121名自行车产品工程师。我们设计制造更专业的车。

From 1986, Decathlon began developing bicycles. Currently, there are 121 bicycle product engineers worldwide.

2 循环设计思维 CIRCULAR DESIGN THINKING

可再生能源和能效提升仅能解决全球55%的温室气体排放问题，为消除生产、消费产品和食物所带来的温室气体排放，我们需要向循环经济转型。循环设计思维强调从源头消除废弃物和污染，循环产品和材料，促进再生自然，创造一个造福人类、企业和自然界的经济体系。

Renewable energy and improving energy efficiency can only address 55% of global greenhouse gas emissions. To eliminate greenhouse gas emissions from producing, consuming goods and food, we need to move to a circular economy. Circular design thinking emphasises the elimination of waste and pollution from the source, recycling products and materials, promoting the regeneration of nature, and creating an economic system that benefits people, enterprises and the natural world.



Details

项目名称 PROJECT NAME:
迪卡侬二手童车项目
The second-hand kids-bike project by
Decathlon

实际上，生产一辆全新自行车需汇集20多个地区的50种零部件，60kg碳排放。时间改变的是价格，而非价值。我们希望帮助更多用户获得环保选择，让更多小朋友在迪卡侬圆梦骑行快乐，用同一辆自行车铭刻共同的童年记忆。2022年5月，二手童车项目首次走进苏州，无锡，东莞，至今已落地迪卡侬中国所有门店——63个城市超过200家门店。来迪卡侬中国门店回收迪卡侬自有品牌二手儿童自行车，把骑行的快乐分享给更多人！

In fact, producing a new bike requires 50 parts from more than 20 regions and on average generating 60kg of carbon emissions. We hope to help more users get environment-friendly choices, so that more children can realize their dreams in Decathlon, and share the same childhood memories with the same bicycle. In May 2022, the second-hand kids-bike project was launched in Suzhou, Wuxi and Dongguan for the first time. So far, it has landed in all Decathlon stores in China. Join us to recycle Decathlon's own brand second-hand kids-bike, and share the happiness of cycling with more people!

案例呈现 CASE STUDIES



3A. 城市之美与历史传承的 完美融合 A FUSION OF URBAN BEAUTY AND HISTORICAL HERITAGE

杭州恒隆广场位于杭州中央商务区的核心腹地，由一座约10万平方米的购物商场、五座甲级办公楼和一座奢华酒店组成的高端商业综合项目，预计于2024年起分阶段落成，将成为杭州新一代城市地标。

杭州恒隆广场的独特设计与自然景观相互呼应，项目更是将杭州的城市文化遗产及现代建筑的精巧工艺融于一体。项目将保留历史建筑耶稣堂弄5号及耶稣堂弄古井，并复建历史建筑镜清里1号；另外，项目还将对南宋仁和县遗址和元代遗迹进行原位保护，将它们安置在地下一层不小于1,000平方米的空间内，让到访者可以观赏到古迹的原貌。

Nestled at the heart of the Hangzhou CBD, Westlake 66 will comprise 100,000 sq.m. of prestigious retail space, five Grade A office towers and a luxury hotel. The project is scheduled for completion in phases from 2024 and is set to become the pre-eminent new landmark of Hangzhou.

The unique design of the complex echoes the beauty of the natural landscape in the perfect synergy of exquisite craftsmanship with the city's cultural heritage. Westlake 66, Hangzhou will preserve the historical buildings at 5 Yesutang Lane and the ancient well of Yesutang as well as restore the historical building, 1 Jingqingli. The project also preserves the ruins of Renhe county of the Southern Song Dynasty and Yuan Dynasty at their original sites, setting them in an underground viewing space of more than 1,000 sq.m, allowing visitors to appreciate the restored relics.

Details

项目名称 PROJECT NAME:
杭州恒隆广场
Westlake 66, Hangzhou

设计方 DESIGNED BY:
恒隆地产
Hang Lung Properties

项目年份 YEAR OF THE PROJECT:
2024年起分阶段落成
In phases from 2024

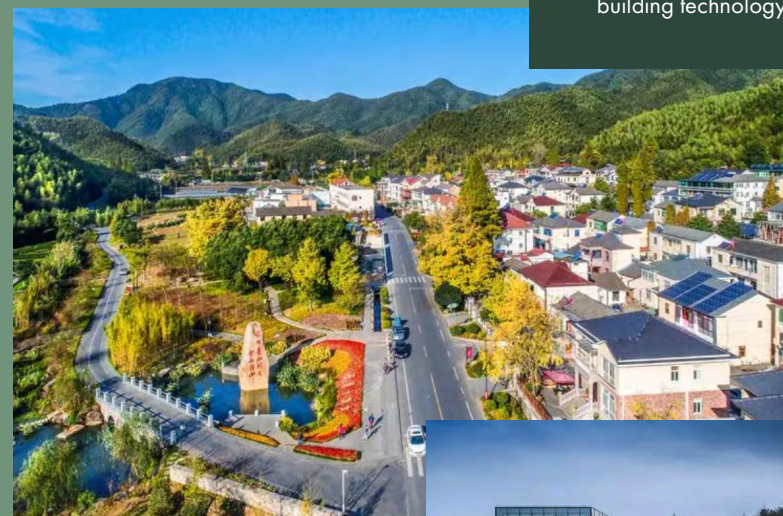


3 零碳之“道” ON THE PATH TO NET ZERO

3B. 零碳乡村转型 ZERO-CARBON RURAL TRANSFORMATION

评估一个组织或机构对环境的影响和依赖是进行生态过渡的第一步。实现建筑环境中的净零操作和蕴含碳排放是可行的，但需要明确而雄心勃勃的政策来推动一系列可持续而有效的措施，包括被动建筑设计、材料效率、低碳材料的使用以及智能建筑技术。

Assessing your organisation's impacts and dependencies is the first step to ecological transition. Reaching net-zero operational and embodied carbon emission in the built environment is possible but requires clear and ambitious policies to drive a range of sustainable and effective measures including passive building design, material efficiency, the use of low-carbon materials and smart building technology.



Details

规划项目 PROJECT NAME:
中国·余村零碳乡村建设规划
China · Yucun Zero Carbon Rural
Construction Plan

规划设计方 CONSULT BY:
中国建筑科学研究院有限公司
China Academy of Building Research

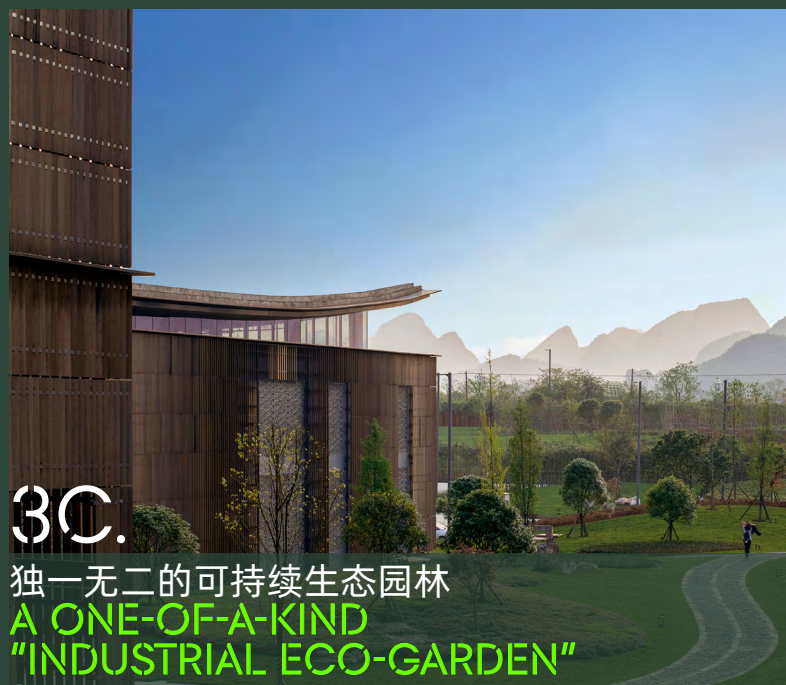
项目完成年份
YEAR OF COMPLETION:
2022

作为中国生态文明理论的发源地，安吉余村是中国转型发展的重要展示平台。《中国·余村零碳乡村建设规划》作为全国第一份涉及乡村净零转型的规划项目，方案采用情景预测的方式对村域全要素的未来碳排放进行了预测，并针对余村的净零转型开发了减碳路径，同时通过“余村印象”等示范项目作为节能减碳的主要切入点，在帮助余村实现零碳转型的同时全力打造余村品牌。目前“余村印象”已通过国家国内碳中和建筑双铂金认证，这也是中国乡村建筑第一次获得该项荣誉。以此为契机，“余村模式”将成为中国未来乡村转型发展的重要参考样本。

The “China · Yucun Zero Carbon Rural Construction Plan”, as the first planning project involving rural net-zero transition in China, uses scenario prediction to predict the future carbon emissions of the village, and develops a carbon reduction path for its transformation. Meanwhile, demonstration projects such as “Yucun Impression” are used for energy conservation and carbon reduction, while

helping Yucun achieve zero carbon transformation, the plan strives to build the Yucun brand. At present, “Yucun Impression” has received the LEED Platinum certification, which is also for the first time that Chinese rural architecture has received this honour. Taking this as an opportunity, the “Yucun Mode” will become an important reference sample for China's future rural transformation and development in the coming future.

案例呈现 CASE STUDIES



3C. 独一无二的可持续生态园林 A ONE-OF-A-KIND "INDUSTRIAL ECO-GARDEN"

十如位于风景秀丽的桂林，是一个独一无二的可持续生态园林。吕元祥建筑师事务所以创新的开发模式，缔造了一个先进工业技术与大自然和谐共荣的纺织及制衣园区。

设计团队以尊重自然的谦卑态度，巧妙地修复因过度开采而受损的地块。建筑幕墙采用当地特有的青砖及竹板，增强空间通透感及自然光照；景观水体成为园区主线，保护生物多样性，并让建筑无缝融入山水一色的自然景观中。此外，园内还设有天然染料植物园。

十如打破人们对传统工业的固有印象，通过将先进技术、尊重自然且以人为本的可持续设计相结合，成为中国山水文化与制造业完美结合的典范。

Integral is a one-of-a-kind "industrial eco-garden" and a triumph of sustainability located in China's Guangxi Province.

Using a conservation-led development philosophy, RLP Asia's design team restored the natural beauty of the damaged area and created a place where people, technology and nature can co-exist in harmony. While manufacturing is still Integral's focus, the site also includes a botanic garden with traditional natural dye crops, and eco-tourism functions. The building clusters were thoughtfully designed to co-exist and create a dialogue with the re-created natural landscape. The architectural design language was also inspired by the local culture and materials and includes distinctive local blue bricks and bamboo panels.



Details

项目名称 PROJECT NAME:
中国 桂林 十如 Integral, Guilin, China

设计方 DESIGNED BY:
Ronald Lu & Partners

项目年份 YEAR OF PROJECT:
2014

竣工年份 YEAR OF COMPLETION:
2020

Integral reimagines how architecture, industry and nature can exist together over the long term. By combining technical advancement with sustainability, respect for nature and human-centricity, Integral is a pioneering model of how industry can create harmony and balance between nature and humanity while also ensuring the industrial advancement of society.



3 零碳之“道” ON THE PATH TO NET ZERO

Details

项目名称 PROJECT NAME:
青岛云上观澜
Qingdao Cloud Bay Palace

设计方 DESIGNED BY:
中国建筑西南设计研究院、青岛市民用建筑设计院、美国HZS
China Southwest Architecture, Qingdao Institute of Civilian Architecture
Designing, HZS

项目年份 YEAR OF PROJECT:
2022

竣工年份 YEAR OF COMPLETION:
2025

云上观澜，青铁置业与中瑞鼎峰联合合著，依托哈马碧2.0模式，创领青岛碳中和国际生态人居范本。项目落于市南前海最后两公里黄金海岸线，270°无界环幕视野，重新定义一线城市的亲海宜居生活。并将碳减排和可持续社区概念纳入其中，引入哈马碧发展理念，降低建筑全生命周期碳足迹及能耗和水耗，努力提升项目所在地区的生物多样性和动物栖息地，结合这一低碳生态理念，打造集休闲、娱乐、阅读研学于一体的约5万m²团岛山森林公园，缔造城市里的森趣慢生活。以“阳光”、“空气”、“水”、“环境”、“智能”、“高定”六大奢居体系，呈现兼具低碳、智慧、温度的未来人居构想。

3D. 重新定义亲海宜居生活 REDEFINING THE SEA-FRIENDLY AND LIVABLE LIFE



Cloud Bay Palace is the joint creation of White Peak and Qingdao Metro Group, based on the Hammarby model 2.0, becoming a carbon-neutral international ecological living model in Qingdao. The project is located on the last two kilometres of golden coastline of Qianhai in the south of the city, with a 270° unbounded view, redefining the sea-friendly and livable life in first-tier cities. At the project, decarbonization and sustainable community concepts have been incorporated, leading to even higher sustainability performance. The project will feature innovative design, striving

to reduce building LCA carbon footprint, energy consumption and water consumption, and improve biodiversity and natural animal habitat within the area. In addition to these sustainability concepts, the project will present a 50,000 m² Tuandao Mountain Park, with rich offerings of leisure, entertainment, reading and learning activities. With the six luxury living systems of "Sunshine", "Air", "Water", "Environment", "Smart" and "High-end Customization", it presents the concept of future human living with low carbon, smartness and comfort.

案例呈现 CASE STUDIES



4 构筑绿色未来 TOWARDS A GREENER FUTURE

4A.

中国第一座零碳奇迹

CHINA'S FIRST
ZERO-CARBON MARVEL



建筑环境是实现韧性和零排放未来所需转型的关键领域之一。我们探讨了有效实施和衡量绩效和影响的机会、挑战，以及最先进的方法和最佳实践。建筑环境领域对于实现所需的向韧性和零排放未来转型至关重要。我们号召该领域了解机遇和挑战，掌握最先进的方法和最佳实践，以应对挑战并借鉴经验和创新思想。

The built environment is one of the key sectors to achieve the needed transition to a resilient and Net Zero future. We explore the opportunities, challenges and state-of-the-art methods and best practices to effectively implement and measure performance and impact. Built environment is a critical sector to achieve the needed transition to a resilient and zero-emissions future. We rally the sector to understand opportunities and challenges, state-of-the-art methods and best practices to address challenges and leverage experiences and ideas.

Details

项目名称
PROJECT NAME:
南京绿色灯塔
NANJING GREEN LIGHTHOUSE

设计方
DESIGNED BY:
筑土国际
Archiland International

项目完成年份
YEAR OF COMPLETION:
2015

南京绿色灯塔是中国首批建造的零碳建筑之一，作为一个鼓舞人心的工程，它的设计和建造标志着南京高新区的转型。南京绿色灯塔实现了低于25 kWh/m²/年的能耗，剩余的能量负荷将被光伏面板抵消。主要原因是能够通过复杂的立面设计，在所有永久性工作区域实现200 LUX的自然采光水平。该建筑物集合自然光和室内气候为一体，在总体上提升健康生活环境品质和生产生活的能力。借助多学科的细节和3D工具，对窗户和天窗的最佳区域进行了计算，在最低耗能的基础上，实现最大功效。

Nanjing Green Lighthouse is the first zero-carbon building in China. As an inspiration project, its design and construction mark the transformation of a worn-down high-tech zone. It has achieved an energy consumption below 25 kWh/m²/year, and its remaining energy load will be offset by photovoltaic panels. Through sophisticated façade design, all permanent working areas can enjoy 200 Lux natural daylight. The combination of natural daylight and indoor climate will improve the quality of healthy

living environment and productivity of the users. With the assistance of multidisciplinary details and 3D tools, we calculate the best location of windows and skylight to maximise its function and efficiency while minimizing the energy consumption.

案例呈现 CASE STUDIES



4B. 成都未来之城：打造城市新地标 FUTURE CITY OF CHENGDU: A GRAND COMPLEX FOR A NEW URBAN LANDMARK

项目位于武侯区天府大道与吉瑞三路，与成都地铁1号线和18号线的世纪城站接驳，项目选址位置极佳，为商务、差旅等创造了便利的交通条件。项目共包含2个地块，并通过地下室和商业连廊相互连通，总项目面积约60万m²，建成后将成为集城市级购物中心、超五星级酒店、超甲级写字楼及高端住宅为一体的大型综合体，是未来成都市的新地标。

The project is located at the intersection of Tianfu Avenue and Jirui Road in Wuhou District, connecting with Chengdu Metro Line 1 and Line 18. The location of the project is excellent, creating convenient transportation conditions for business and travel.

The project consists of two plots, connected each other through basements and commercial corridors, with a total

area of approximately 600,000 sqm. After completion, it will become a large-scale complex with shopping centres, five-star level hotels, A-level office buildings, and high-end residences, making it a new landmark of Chengdu in the future. This project aims at LEED Gold and WELL Gold standards, for energy saving, low carbon as well as for wellness.



Details

项目名称 PROJECT NAME:
成都世豪广场
Chengdu Saiho Center

咨询方 CONSULT BY:
中国建筑科学研究院有限公司
China Academy of Building Research Co., Ltd

项目完成年份 YEAR OF COMPLETION:
2025

4C. 让恐龙遗址焕发 生机的生态设计 REVITALIZING DINOSAUR SITES WITH ECO-DESIGN

Details

项目名称 PROJECT NAME:
重庆市云阳县普安恐龙地质公园-恐龙遗址展廊
热环境改善专项咨询
The Thermal condition improvement consulting of
Exhibition Gallery of Dinosaur Fossil Site at Dinosaur
Geopark, Pu'an, Yunyang County, Chongqing

咨询方 CONSULT BY:
君凯环境管理咨询（上海）有限公司
Environmental Market Solutions Inc. Shanghai

设计方 DESIGNED BY:
中国建筑研究院有限公司
China Architecture Design & Research Group

项目年份 YEAR OF PROJECT:
2021

恐龙遗址展廊，被设计为由PTFE膜覆盖的半室外遗址保护棚架。设计师结合恐龙遗址区的地势特征，利用建筑性能化分析方法，构建出独特的膜结构顶棚，能够在全年大多数时段利用热压自然通风来改善参观区的热环境舒适度。并且通过对空气流动特性的模拟，预测了参观区内的空气龄分布，对空气循环较差的区域做了针对性的诱导风设计，以提升空气新鲜度。

本项目通过多种建筑可持续设计方法的应用，在维持环境健康和舒适的前提下，大大降低了机电设备的使用范围和频率，充分体现了节能低碳的设计理念和低干扰、可逆化的遗址保护新策略。



The Exhibition Gallery of Dinosaur Fossil Site is designed as a semi-outdoor protection structure covered by PTFE membrane.

Considering the topographic features of the site and using the building performance analysis method, the designer built a unique membrane structure roof, which can use stack ventilation to improve the thermal comfort of the visiting area most of the year. Furthermore, through the simulation, the age of air in the area was predicted, and the targeted wind-induced design was made to increase the ventilation rate for those area with poor air circulation.

A variety of sustainable building design tools were applied in the project, it greatly reduces the scope and frequency of use of M&E equipment under the premise of maintaining environmental health and comfort, fully embodies the design concept of energy conservation and low carbon emission, and the new strategy of site protection with low interference and reversible.

案例呈现 CASE STUDIES

5 全方位的绿色酒店 HOLISTIC HOSPITALITY

为旅途中的旅人创造一个温馨舒适的环境，为员工创造一个健康的工作环境，在放松的同时也最大限度地减少对环境的影响，Holistic hospitality体现了注重你我和环境福祉的设计。

Holistic hospitality is an approach to hospitality that focuses on the well-being of guests, employees, and the environment. It involves creating a welcoming and comfortable environment for guests while also minimizing the environmental impact of the hotel and promoting the health and happiness of employees.



5A. 诠释现代家的温度 THE WARMTH OF MODERN HOME



Details

项目名称 PROJECT NAME:
失物招领 杭州天目里 生活提案店
Lost & Found OǒEli, Hangzhou

设计方 DESIGNED BY:
B.L.U.E.建筑设计事务所
B.L.U.E. Architecture Studio

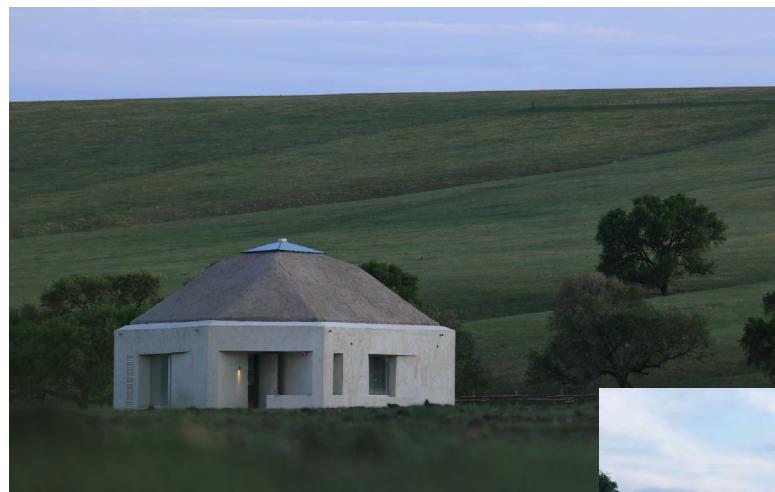
项目完成年份 YEAR OF COMPLETION:
2020



失物招领作为一个生活家居品牌，除家具以外，也提供包括手工陶艺、植物、居家器物、织品等生活用品。此次设计中，设计师延续了家的概念，利用自然和废弃的物料，用手工工艺建造，在人和时间的共同作用中，寻回日常生活的美和意义，同时也呼应了失物招领品牌惜物的生活方式，在天目里这样一个现代感的艺术园区里，呈现“家”的样貌和內，失物招领天目里店给了我们一个寻回丢失的日常生活和情感的可能性。

Lost & Found is a lifestyle brand that provides not only solid wood furniture but also ceramics, utensils, fabrics and plants for daily life. During this collaboration, B.L.U.E. continues to bring the concept and sense of 'home' into the store. The beauty of the interaction between time, human and objects is a soft power that helps people to explore the beauty and meaning of daily life. The design philosophy responds to the lifestyle of cherishing things in everyday life advocated by the brand. The spatial design revolves around materiality of the interior, natural texture and artisan craftsmanship, reflecting Lost & Found's philosophy of art and daily life.

案例呈现 CASE STUDIES



Details
项目名称
PROJECT NAME:
草原宿集·飞蔦集
Stray Bird · Prairie

设计方
DESIGNED BY:
STUDIO QI 建筑事务所

项目完成年份
YEAR OF COMPLETION:
2023

5B.

变幻之景：草原宿集·飞蔦集的
可持续游牧生活

SHIFTING SCENERY:
SUSTAINABLE NOMADIC
LIVING AT STRAY BIRD ·
PRAIRIE

草原宿集·飞蔦集是位于内蒙古乌兰毛都草原上的民宿集群，其通过传统蒙古包的向心形式逻辑生成五、六、八边形的几何建筑单体，去探讨一种在草原生态环境中的可持续的居住生活。

“游牧人依水草而居，转徙无常，故以穹庐为栖止。”这是一段游牧生活的描述，“穹庐”指的就是蒙古包。游牧人过一段时间就会迁徙一次，帐幕前的景色随四季、地点变换，蒙古包的室内布置则依旧。“待四时之景”是一种在持续时间内游牧旅居生活状态。草原宿集·飞蔦集通过2.5维“浅空间”与伸缩性的界面将“四时”这种绝对的时间感受，转化为相对的空间体验。

Stray Bird · Prairie is a boutique hotel, a cluster of 17 habitable units scattered on the Ulan Maodu Prairie in Inner Mongolia. To explore a type of sustainable living environment on the prairie, it embraces 3 kinds of geometrical forms, pentagon, hexagon, and octagon, inheriting the centrality of the traditional yurt.

“Nomads travel constantly, living by streams and grass and living in yurts.” It was a constant nomadic lifestyle, looking at changing scenery and seasons in different locations but standing by the same yurt. Stray Bird · Prairie aims to transform this absolute movement of time into a relative spatial experience, through the 2.5-dimensional “shallow space” and the flexibility of spatial interface.

5 全方位的绿色酒店 HOLISTIC HOSPITALITY

5C.

优雅与能效并重

BALANCING ELEGANCE
AND ENERGY EFFICIENCY



Details
项目名称 PROJECT NAME:
宁波东钱湖希尔顿酒店
Hilton Ningbo Dongqian Lake

项目完成年份 YEAR OF COMPLETION:
2016

坐落于东钱湖边、与“殷湾渔火”隔湖相望，宁波东钱湖希尔顿酒店完美诠释了中国传统民居院落、与高雅现代风格结合的度假意境。

相较于城市酒店，度假酒店的运营能耗较大是业内共识。酒店楼宇自控系统（BAS）在设计之初已经意识到这个问题的重要性，通过前期精细化设计、施工过程中严格管理、开业前严谨调试、运营中认真维护，将酒店的运营能耗控制在较低的水平。

Located by the Dongqian Lake and facing the “Yinwan Fishing Fire” across the lake, Hilton Ningbo Dongqian Lake perfectly combines the traditional Chinese courtyard style with an elegant modern aesthetic, creating a picturesque resort atmosphere.

Compared to urban hotels, it is recognized in the industry that resorts have higher operational energy consumption. The Building

Automation System (BAS) of the hotel was designed with a strong awareness of this issue, and through meticulous design, strict construction management, rigorous commissioning before the opening, and careful maintenance during operation, the hotel has achieved low levels of operational energy consumption.

案例呈现 CASE STUDIES



Details

项目名称
PROJECT NAME:
Symbiosis Building D

设计方
DESIGNED BY:
ACPV ARCHITECTS Antonio Citterio
Patricia Viel

项目年份:
YEAR OF THE PROJECT:
2022



6A. 重新定义工作空间 REDEFINE THE WORKPLACE

继 Fastweb 新总部竣工和 Piazza Adriano Olivetti 广场开放之后，米兰共生商业区D栋成为米兰共生商业区城市和环境改造计划的最新成员。米兰共生商业区D栋是一座占地 20,000 平方米的办公楼，它重新定义了工作空间，使之成为一个能够适应员工个人和职业需求的场所。

该办公楼在设计时充分考虑了可持续发展，与周围的现有建筑和绿色公共区域形成互动，并因其对人的福祉、室内舒适度和节能设计的关注而获得了 LEED 白金级和 WELL 铜级认证。米兰共生商业区D栋是为欧洲投资和开发公司 Covivio 设计的，欢迎Boehringer Ingelheim、LVMH P&C Italia、Amplifon 以及 Mars - Royal Canin Italia 和 Fratelli Orsero 集团旗下的公司等大型全球性企业入驻。

After the completion of the new Fastweb Headquarters and the opening of the Piazza Adriano Olivetti public square, Building D is the latest addition to the urban and environmental regeneration program of Milan's Symbiosis business district. Building D is a 20,000m² office building that redefines the workspace as a place that can adapt to employees' personal and professional needs.

Designed with sustainability in mind, the office building interacts with the existing buildings and green public areas of its surroundings and has obtained

LEED Platinum and WELL Bronze certifications for its focus on people's well-being, indoor comfort, and energy-efficient design. Designed for European investment and development company Covivio, Building D welcomes large global firms, such as Boehringer Ingelheim, LVMH P&C Italia, Amplifon, and companies of the Mars – Royal Canin Italia and Fratelli Orsero groups.

6 人性化办公 THE EMPATHIC WORKPLACE

我们的工作环境已经发生了深刻而持久的改变。如今，工作可以随时随地进行。可持续性、灵活性、协同创新、技术以及员工健康福祉成为了指引设计师应对这些变革的重要因素。

Our workplaces have changed for good In today's reality, work can happen anywhere, anytime. Sustainability, agility, co-creation, technology, and wellbeing are some of the key factors that are informing the way in which designers are implementing and responding to these changes.



6B. 智慧立面赋能创新工作空间 SMART FACADES ENRICH INNOVATIVE WORKSPACES

长飞光纤产业大楼位于武汉光谷，秉持“联结、创新、绿色、健康”的设计理念，打造了一座以人为本，促进协作与创新、绿色低碳的总部办公大楼。设计团队从中国传统窗棂中汲取灵感，结合高科技幕墙技术，打造了智能的三层立面系统。建筑立面可以根据周边环境和光线条件的变化，通过传感器和内置电机来控制中间层遮阳百叶进行旋转，进而调节透过外立面进入建筑内部的光线和热量。

智能立面系统使建筑能够优化自加热和自冷却性能，可以更好地应对高温、暴晒、强降雨等各种极端天气，具有出色的节能效果，为员工营造舒适的室内环境，并营造出多变的建筑外观效果。

The new headquarters of Yangtze Optical Fibre and Cable Joint Stock Limited Company ("YOFC") in Wuhan is a high-tech beacon to connect, collaborate, and communicate, and a manifestation of the company's success as the world's biggest optical fibre manufacturer.

Following a vision of high aims to truly connect the Optics Valley of China and innovative science communities in Wuhan, Gensler has designed the YOFC Headquarters with high standards, bound to create a favourable and pleasant working environment for employees and creating a better brand perception.

Details

项目名称
PROJECT NAME:
长飞光纤产业大楼
YOFC Headquarters

设计方
DESIGNED BY:
Gensler

项目年份:
YEAR OF THE PROJECT:
2023

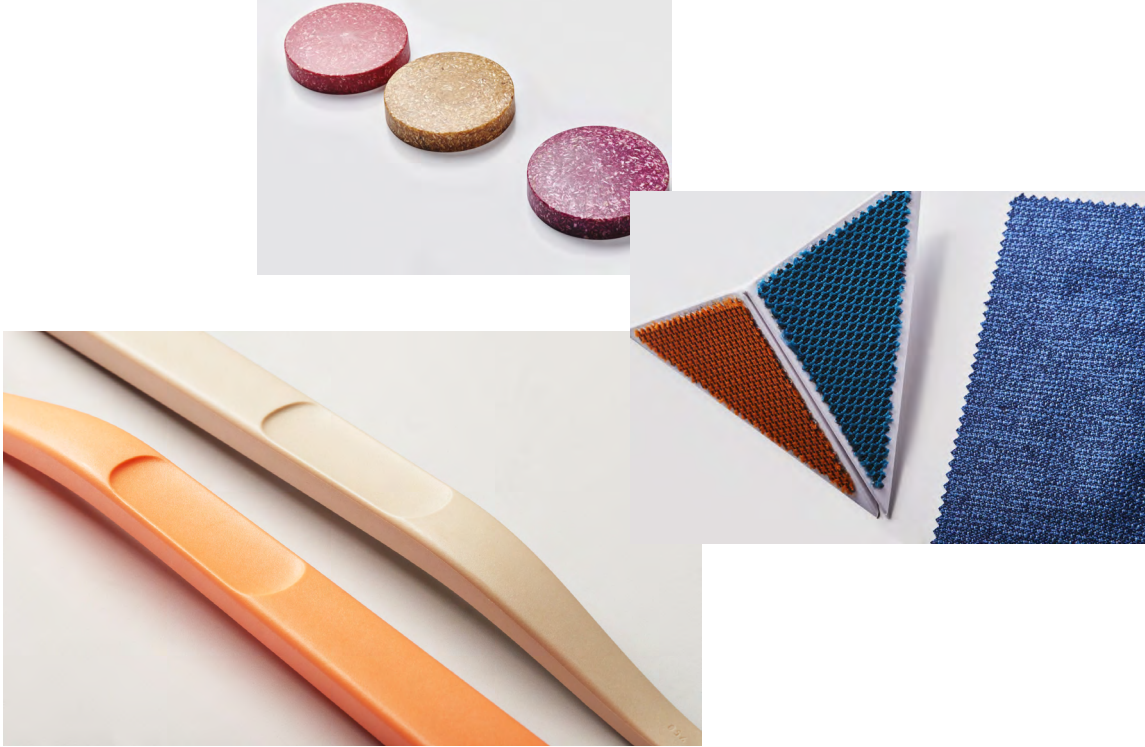
特别策划
FEATURES



展位
MATERIALS FIRST
展位号：Hall 2, 2-134

国际知名的材料与设计应用专家Chris Lefteri将带着升级版的装置“Materials First”再次回归。这场精心策划的展览将以三个引人入胜的类别展开，呈现超过100种前沿设计材料：单一材料、废弃物和生物材料。探索这些材料无限的可能性，见证它们与设计之间令人惊叹的有机连接与互动。

The renowned expert in materials and design applications, Chris Lefteri, is making a comeback with a captivating and upgraded installation - “Materials First”. Get ready to be amazed as this specially curated exhibition presents over 100 cutting-edge design materials from 3 fascinating categories: Monomaterials, Waste, and Bio-materials. Explore the boundless possibilities of these materials and witness their incredible organic connection and interaction with design.



第一大类：
Mono-Materials

Monomaterial PA
Renewable PA11 yarn
Q-Nova recycled PA6.6 textile yarn
Rilsan bio-based PA11 resin
Pebax bio-based PA11 elastomer
PA 11 powder
PA textile
PA textile
PA- nutcracker

Monomaterial PET
Revive 1 recycled PET fabric
Rivet recycled PET fabric
PlastiLoop recycled PET resin
Oceanic recycled PET fabric
Reflow recycled PET filament

Monomaterial PP
Recycled expanded PP foam
Circo recycled PP resin
Softell PP elastomer
Orion recycled PP textile
Society recycled PP textile
Curv self-reinforced PP composite

Monomaterial TPU
Elastollan® TPU leather
Infnergy® expanded TPU foam
Desmopan® TPU leather
Desmopan® CQ EC MB partially renewable TPU resin
TPU self locking strap

Monomaterial PU
Haptex®

Monomaterial Aluminium
Bandoxaldecor
Aluminium sheet
Texturandum®
Hydro
Folded Aluminum sheet
AL forming (technology)

第二大类：
Bio-Materials

Bio-based bio-composite
Pure Mano soft touch recycled paper
BioBasedTiles made with bacterial growth
Cork composite sheets and blocks
Lifocork cork composite resin
Kallamat recycled leather fibre composite
Latigea PLA resin and wood fibre composite
Sulapac bio-based resin and filler composite
Arbofill bio-based resin and coconut fibre composite
“Metis Seagrass surface panel”
SeaCell cellulose and seaweed textile
Rise EVA resin and algae composite foam
Formi EcoAce renewable PP resin and cellulose fibre composite
DuraSense® Pure PP resin and cellulose fibre composite
Fibrolon® renewable resin and wood particle composite
Bio-based resin and cork composite
Bio-based PE and hemp fibre composite
Bio-based PE and olive stone composite
PP resin and oyster shell composite
Revo recycled PP and plant fibre composite
XCR5 rubber and cork composite flooring
WoodFill PLA/PHA resin and wood fibre composite filament
Valchromat® coloured wood fibre panels
PaperFoam® injection moulded cellulose fibre
OSB Color panel

Bio-based virgin biomass
PLEXIGLAS® proTerra 8N partially renewable PMMA resin
Makrolon RE partially renewable PC resin
Treva bio-based plastic resin

I’m Green bio-based PE resin
Woody cellulose-based resin
Dryflex Green bio-based TPE elastomer
Crackle salt water pearl wall panels
Fixits Bamboo pouch
Mater-Bi® PLA resin
Translucent wood sheet
Terratek® BD
Accoya pre-treated long life wood
Ecologically dyed wood veneers

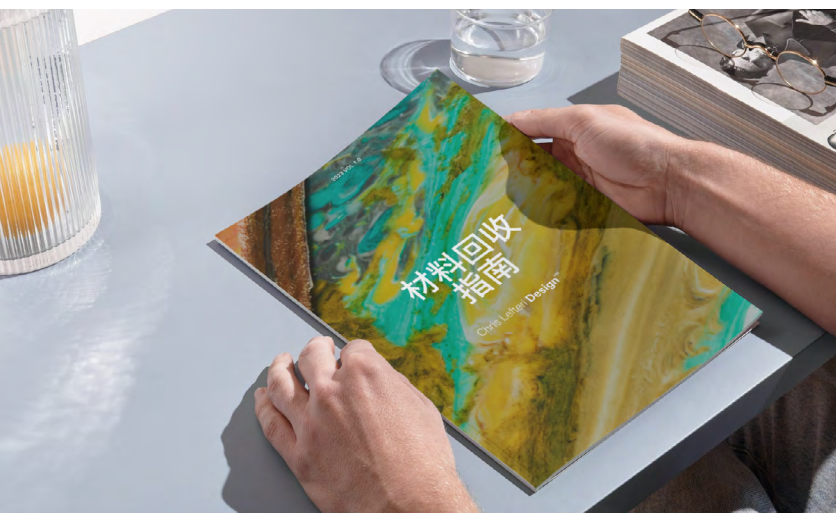
Bio-based waste biomass
Gmund Bier, Cotton and Heidi mixed fibre recycled paper
Seagrass carpet
Natpla Paper made with seaweed
Pluuno packaging insulation made with waste feathers
Corium bonded recycled leather
Tiikeri panel made with waste straw
Zelfo waste cellulose fibre
R-TWO™ recycled PET and cotton textile
Artificial leather made with plant leaves

第三大类：
Waste

SUVO volcanic pumice Vase
CHAMEL® RECYCLED
Green Applelec LED light sheet
Recycled PMMA 再生魔石
废料再生装饰板 Waste Yarn Recycled Decorative Panel
废料再生材料 Waste Yarn Recycled Material
再生纸纤维板 Recycled Paper Fiber Board
菌丝体吸音板 Mycelium Sound Absorption Panel
固碳砖 Carbon Capture Brick
花草板 Floral Grass Panel
零碳砖 Zero Carbon Brick
生物基涂料 Bio-based Paint
再生地毯 Recycled Carpet
细菌砖 Bacteria Brick
菌丝体灯具 Mycelium Light Fixture
菌丝体标准盒 Mycelium Standard

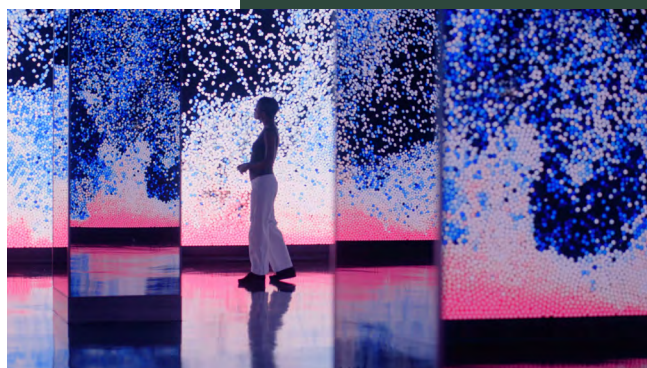
Box
菌丝体骨灰盒 Mycelium Urn (or Ash Box)
竹纤维板 Bamboo Fiber Board
碳化咖啡渣板 Carbonized Coffee Ground Panel
纤塑地板 Fiber-plastic Flooring
低碳石膏 Low Carbon Gypsum
陶瓷再生透水砖 Ceramic Recycled Permeable Brick
汉麻混凝土 Hemp Concrete
光触媒墙面板 Photocatalytic Wall Panel
相变材料 hase Change Materials
咖啡渣砖 Coffee Ground Brick
飞灰再生玻璃砖 Fly Ash Recycled Glass Brick
污泥固废再生玻璃-Sludge Solid Waste Recycled Glass
回塑草 Waste Plastic Turf
奶盒纸 Milk Carton Paper
植物羊 Natural Dyed Cashmere
回衣帆 Recycled Canvas
口罩木 Mask Recycled Wood
白波漆 White Wave Glass
棕皮纸 Recycled Leather
彩点膜 Colorful Dots Film
彩点垫 Colorful Dots Mat
玉米漆 Corn Recycled Paint
彩虹绵 Rainbow Recycled Sponge
气球皮 Balloon Leather
奶棕石 Palm Fiber Stone
餐具石 Ceramic Tableware Stone
水桶板 Water Barrel Board
轻轻石 Recycled PVC Board
碳塑钢 Carbon PC Sheet
枝叶石 Biochar Stone
铝罐板 Aluminum Cans Sheet
彩织木 Garment Fiber Wood
回窑砖 Recycled Ceramic Tile
牛仔纸 Denim Paper
绿波玻璃 Green Wave Glass
渣渣菇 Beer Dregs Mycelium
青电石 E-waste Stone
牡蛎石 Oyster Shell Stone
扇贝泥 Scallop Shell Paint
瓶盖片 Recycled PE Sheet
瓶盖板 Recycled PE Board
零件塑 Recycled UPE Board
水瓶墙 Bottle Acoustic Panel
夹心墙 Bottle Wall Panel
渔网毯 Fishing Nets Carpet

《材料回收指南》 GUIDE TO RECYCLING



请关注Chris Lefteri Design的官方微信
或者扫描二维码开始下载
Please follow Chris Lefteri Design's official WeChat
account, or scan the QR code to start the download.
ID: Chris Lefteri Design

可持续设计峰会特别呈现由数字艺术家Maxim Zhestkov打造的“Waves”沉浸式数字艺术装置。这一壮观的作品最初在伦敦W1 Curates画廊展出，由计算机模拟数百万个球形粒子，它们不断移动、相互碰撞，形成令人叹为观止的数字“动态雕塑”。该作品基于一系列根据物理原理精心制定的算法而生，呈现出变幻莫测的迷人视觉效果。



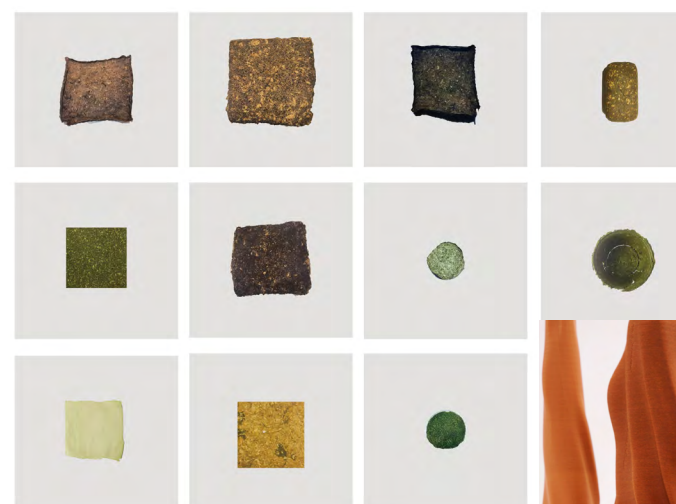
WAVES MAXIM ZHESTKOV

The Sustainable Design China Summit is proud to present the “Waves” immersive digital art installation created by digital artist Maxim Zhestkov. Originally displayed at the W1 Curates gallery in London, this stunning piece showcases a computer simulation consisting of millions of spherical particles that gracefully interact, forming captivating digital “motion sculptures.” This mesmerizing creation comes to life through a meticulously crafted set of algorithms rooted in the principles of physics, yielding beautifully unpredictable results.

可持续设计峰会联合 Chris Lefteri Design 共同向您呈现《材料回收指南》，通过这本指南，您将深入了解当今产品设计中用于回收的最常见材料流程，以及如何更有效地使用回收材料，并获得确保回收在未来持续改进的重要见解。这本指南不仅提供理论知识，更是一个专业的实用工具。深入了解回收材料的多样用途和潜在价值，将为您设计的工作注入新的灵感和创意。

“Guide to Recycling” by Chris Lefteri Design is an exceptionally well-crafted and expertly curated publication. This comprehensive guide provides profound insights into the prevalent material recycling processes utilized in contemporary product design, while also offering invaluable perspectives on optimizing the use of recycled materials and promoting continuous improvements in recycling practices for the future.

芬兰馆 FINLAND PAVILION 展位号: Hall 2, 2-70



身旁及远方 NEAR & DISTANT 展位号: Hall 2, 2-22



可持续设计峰会携手中央美术学院城市设计学院趋势化设计研究工作室，在峰会现场呈现“身旁及远方”2023可持续设计特别策划，以设计教育的角度带领一众年轻设计师与他们极具创意、充满爱与可能性的作品，从时间、地域、事件三大维度出发，为中国可持续设计的年轻力量提供一个展现的舞台。

The Sustainable Design China Summit, in collaboration with the Social Innovation and Humanity Design Research Studio from the School of City Design at the China Central Academy of Fine Arts, proudly presents this brand new feature - “Near & Distant”. From an educational perspective, the summit leads a group of young designers to showcase their highly creative, loving, and visionary works. The exhibits delve into three dimensions: time, space, and events, providing an exclusive platform for the budding talents of sustainable design in China to shine.

芬兰设计之美：
可持续性功能的完美融合

芬兰，作为世界设计领域的翘楚之一，以其北欧极简的设计理念而闻名。芬兰的设计作品融合了实用性、功能性，以及可持续性，展现出令人叹为观止的品质。

在本次峰会的展览板块中，我们将展示由PES建筑设计事务所设计，九家公司共同参与的“芬兰国家馆”特别策划项目。该项目得到了芬兰共和国驻华大使馆、芬兰驻上海总领事馆以及芬兰国家商务促进局的全力支持与协调。

The Beauty of Finnish Design:
A Perfect Fusion of Sustainability and
Functionality

Finland, known as one of the world's leaders in the field of design, is renowned for its Nordic minimalist design philosophy. Finnish design seamlessly combines practicality, functionality, and sustainability, showcasing remarkable quality.

In the exhibition section of this summit, we will present the “Finnish National Pavilion” special project, designed by PES Architectural Design Studio, with the participation of nine companies. This project has received full support and coordination from the Embassy of the Republic of Finland in China, the Consulate General of Finland in Shanghai, and the Finnish National Agency for Education.

峰会日程
SUMMIT
PROGRAMME

第一天 2023年9月21日
DAY 1 21 September 2023

图示:
该嘉宾为圆桌论坛参与嘉宾
该嘉宾为圆桌论坛主持人

09:30 – 09:45

王清勤 Qingqin Wang

Vice President, China Academy of Building Research
中国建筑科学研究院有限公司，副总经理

Sustainable Design China Summit Opening Ceremony 开幕仪式

10:00 – 10:30

AUDI SESSION
奥迪环节

Audi's holistic approach to sustainable design
奥迪全面的可持续设计理念

Audi logo

10:30 – 10:50

Orianna Fielding

Chief Sustainability Advisor, Sustainable Design China Summit
北京可持续设计峰会，首席可持续顾问

Opening Speech 开幕致辞

Henrik Wenders

Chief Marketing Officer, AUDI AG
奥迪全球首席营销官

10:50 – 11:20

张斌 Allan Zhang

Chief Executive Officer, Shui On Xintiandi Limited
瑞安新天地有限公司，行政总裁

For a Better Future: Building Premium Sustainable Communities Together
共建未来：卓越可持续社区建设的实践与创想

Michael Arndt

President, FAW Audi Sales Company Ltd.
一汽奥迪销售有限责任公司总经理

11:20 – 11:50

汪林 Lin Wang

Head of Customer Solution & Projects Center, Grundfos Commercial Building Services
格兰富商业建筑事业部，解决方案及项目中心总监

Smart Water Solution for Energy Efficient Buildings
智慧水方案赋能高效能建筑

Edward Ollafers

Head of Audi China Design
奥迪中国设计中心总监

11:50 – 12:20

Mario Cucinella

Founder and Creative Director, Mario Cucinella Architects
MCA 建筑事务所 (Mario Cucinella Architects)，创始人

Nature Positive Design Biodiversity
自然友好设计，生物多样性

12:20 – 12:35

沃尔夫冈·费斯特 Prof. em Dr. Wolfgang Feist

Founder, The Passive House Institute (PHI), Professor at the University of Innsbruck
被动房创始人，因斯布鲁克大学教授

Designing to Passive House Building Standards
被动房节能建筑标准和设计原则

12:35 – 12:50

戴若甫 Rolf Demmler

Founding director of SoftGrid Ltd
索杰建筑设计咨询（上海）有限公司董事长

Passive House Design in China: Case Studies of Performance, Decarbonization and a Business Case for Sustainability
被动房设计在中国：可持续性的性能表现、减碳及商业模式的案例研究

14:30 – 15:15

PANEL DISCUSSION
圆桌讨论

How to Create Sustainable Design Products that Engage and Connect with Consumers
如何创造出客户和市场认可的可持续设计产品

夏地宏 Uta Xia

Sustainable Change Management Leader, Decathlon China
迪卡侬中国，可持续发展变革负责人

12:35 – 12:50

戴若甫 Rolf Demmler

Founding director of SoftGrid Ltd
索杰建筑设计咨询（上海）有限公司董事长

Passive House Design in China: Case Studies of Performance, Decarbonization and a Business Case for Sustainability
被动房设计在中国：可持续性的性能表现、减碳及商业模式的案例研究

程路佳 Luke Cheng

Operations and Network Lead, China, Ellen MacArthur Foundation
艾伦·麦克阿瑟基金会运营与伙伴关系主任

余江雪 Jiangxue Yu

Leader of Sustainability Committee, MUJI
无印良品，可持续发展委员会负责人

13:30 – 14:00

诸大建 Dajian Zhu

Director of Institute of Governance for Sustainable Development, Vice Chairman of University Academic Committee at Tongji University in Shanghai
同济大学可持续发展与管理研究所，所长；同济大学学术委员会，副主任

Circular Economy and its Impact on Peak Carbon Emissions and Carbon Neutrality
循环经济助推碳达峰碳中和

孙隽 Alex Sun

Chief Sustainability Officer of Envision Group
远景科技集团首席可持续发展官

14:00 – 14:30

Chris Lefteri

Founder, Chris Lefteri Design
Chris Lefteri Design，创始人

Designing with Environmental Materials as an Integral Part of the Design Process in the Age of Circularity
循环经济时代：以环境材料为核心的设计策略

赵昕 Xin Zhao

Vice President, Yili Group
伊利集团，副总裁

峰会日程
SUMMIT
PROGRAMME

第一天 2023年9月21日
DAY 1 21 September 2023

图示:
该嘉宾为圆桌论坛参与嘉宾
该嘉宾为圆桌论坛主持人

15:35 – 16:05
曹子婧 Zijing Cao
Project Manager Fashion Team (China), Ellen MacArthur Foundation 艾伦·麦克阿瑟基金会，循环时尚项目经理
Integrating Circular Design Strategies into the Fashion Industry 循环时尚-让循环设计成为时尚常态

16:05 – 16:35
赵立建 Lijian Zhao
China Country Director, Carbon Trust Carbon Trust, 中国区总裁
Carbon Footprint Analysis to enable Sustainable Design 理解碳足迹，赋能可持续设计

16:35 – 17:05
吕建中 Dr Jianzhong LU
Board member of Global Reporting Initiative GRI and Deputy Director General of China CSR Think Tank 全球报告倡议组织（GRI），董事
How to Implement Sustainable Business Strategies 可持续商业战略设计思维与方法

17:05 – 17:50
PANEL DISCUSSION
圆桌讨论
The Impact of Sustainable Business Models on Design 可持续商业模式对设计的影响

吕建中 Dr Jianzhong LU
Board member of Global Reporting Initiative GRI and Deputy Director General of China CSR Think Tank 全球报告倡议组织（GRI），董事

李志军 Alwyn Li
Partner, PwC ESG Sustainable Urban Service 普华永道管理咨询有限公司 可持续发展与城市综合服务合伙人

王海山 Haishan Wang
Chairman of Beijing ZhongJianXie Certification Centre Co.,Ltd; Central Carbon Digital Lab Chief Expert, 北京中建协认证中心有限公司，董事长 中碳数字实验室首席专家

周燕 Joan Zhou
Project Technical Director UNDP SDG Innovation Demonstration Project | Suzhou UNDP SDG Innovation Lab | Suzhou 联合国开发计划署苏州可持续发展创新示范合作项目 联合国开发计划署苏州可持续发展创新实验室，技术总监

10:00 – 10:30
张亚龙 Yalong Zhang
Executive Director of Science-Innovation Institute of Sustainable Development, Shenzhen 深圳可持续发展研究院，执行院长
Scientific and Technological Innovations for the Design and Planning of Zero Carbon Cities 科技创新推动零碳城市规划设计

10:30 – 11:00
John Haffner
Deputy Director - Sustainability, Hang Lung Properties 恒隆地产，可持续发展副董事
Opportunities and Challenges on the Path to Net Zero Carbon in Commercial Real Estate 商业房地产迈向净零碳道路上的机遇与挑战

11:00 – 11:30
李志军 Alwyn Li
Partner, PwC ESG Sustainable Urban Service 普华永道管理咨询有限公司 可持续发展与城市综合服务合伙人
Digital Technology Empowers Net-Zero and Sustainable Building System 数字技术赋能建筑行业碳中和

11:30 – 12:15
PANEL DISCUSSION
圆桌讨论
How to Balance Economic and Ecological Benefits in Zero-energy Building 如何平衡零碳建筑的经济效益与生态效益

周海珠 Haizhu Zhou
President, China Academy of Building Research 中国建筑科学研究院有限公司 城乡规划院，院长

梁文杰 MK Leung
Director of Sustainable Design, Ronald Lu & Partners 吕元祥建筑师事务所，环保设计总监；Behave 首席行为分析师

朱毅豪博士 Dr Martin Chu
Co-founder, i2Cool Shenzhen Limited & Member of the Green Technology and Finance Development Committee of HKSAR 创冷科技有限公司，联合创始人&香港绿色科技及金融发展委员会委员



邱万鸿博士 Dr Raymond Yau
General Manager, Technical Services and Sustainable Development, Swire Properties Limited 太古地产有限公司，技术统筹及可持续发展总经理

孙汉松 Hansong Sun
Director of Sustainability, White Peak 中瑞鼎盛地产，可持续发展总监

峰会日程
SUMMIT
PROGRAMME

第二天 2023年9月22日
DAY 2 22 September 2023

图示:

-  该嘉宾为圆桌论坛参与嘉宾
-  该嘉宾为圆桌论坛主持人

13:30 – 13:35



赵戈平 Gary Zhao

General Manager, BRE China
BRE英国建筑研究院中国区, 总经理

Welcome Speech from BRE
BRE 欢迎致辞

13:35 – 13:55



张浩翔 Haoxiang Zhang

Consulting Director, Green partnership
of Industrial parks in China
国家级经开区绿色发展联盟, 咨询总监

Green Planning Promotes High-quality
Development of Parks
绿色规划推动园区高质量发展

13:55 – 14:15



张嵩 Michael Zhang

Deloitte China Green Construction
National Leading Partner
德勤中国绿色建设领导合伙人

Nature Based and Low-Carbon Transfor-
mation of the Development and Construction
Industries
双碳背景下开发建设企业绿色低碳转型之路

14:15 – 14:30



陈鑫 Chen Xu

Director of EHS Department, China Academy of
Building Research Co., Ltd
中国建筑科学研究院有限公司, 环境、健康与可持
续发展中心总监

The Implementation of BREEAM Certification
Systems for Sustainable High End Projects in the
Built Environment. Case Study: Qingpu Jiadi Road
BREEAM标准体系在高端住宅项目中的技术实践
——以金地上海青浦佳迪路项目为例

16:30 – 17:30

PANEL
DISCUSSION
圆桌讨论

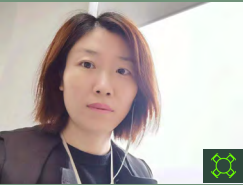
Towards A Greener Future

共筑绿色未来



李昂 Johnny Li

Head of Northern Region, BRE China
英国建筑研究院 (BRE) 中国,
北方区负责人



孙静 Jing Sun

Regional Consulting Director, Beijing
Building Technology Development
Co., Ltd.
北京建筑技术发展有限责任公司,
区域咨询总监



David Schill

Marketing Director, Aritco Lift AB
瑞特科电梯有限公司, 全球市场总监

14:30 – 14:45



韩小宝 Xiaobao Han

Founder, Beijing Arch-Green Low
Carbon Technology Co., Ltd
北京筑绿低碳科技有限公司, 创始人

Net-Zero Carbon Design for Xiong'an Urban
Terminal of Daxing International Airport
雄安大兴国际机场城市航站楼净零碳设计



房明 Ming Fang

Director of the Architecture Department
of the First Design Institute, Beijing
Urban Construction Design &
Development Group Co. Limited
北京城建设计发展集团股份有限公司,
第一设计院建筑室主任

Net-Zero Carbon Design for Xiong'an Urban
Terminal of Daxing International Airport
雄安大兴国际机场城市航站楼净零碳设计

14:45 – 15:00



韦晓霖 Xiaolin Wei

RGM of North China, Environmental
Market Solutions, Inc. Shanghai
君凯环境管理咨询 (上海) 有限公司,
北区总经理

Case Study of Sustainable Design in
the Built Environment
建筑可持续设计概念分享



李旭 Angus Li

Senior Associate Director, Savills
Property Services (Beijing) Co., Ltd.
第一太平戴维斯物业顾问 (北京) 有限
公司, 高级助理董事

Sustainable Operation for Commercial
Buildings
商务楼宇的可持续运维



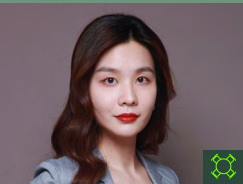
金冀安 Patrick Jin

General Manager, Green Shore Plan
绿岸计划, 总经理



蔡哲理 Zheli Cai

Senior Architect and Project Leader,
MVRDV
MVRDV, 资深建筑师, 项目负责人



梁华卿 Caroline Liang

Technical Director, Center
for Environment, Health and
Sustainability, China Academy of
Building Research
中国建筑科学研究院有限公司环境,
健康与可持续发展中心, 技术总监

15:15 – 15:30



杨振 Henry Yang

Managing Director, Haskoll
赫斯科建筑设计咨询有限公司, 总经理

Sustainable Design For Green Build-
ings Driven By Digitalization
数字化驱动下的绿色可持续建筑设计

16:00 – 16:30



郭而立 Olivier Vignes

Chief Architect, ARCHILAND
筑土国际, 首席建筑师

Low Carbon City / New Model
Driving The Future
低碳城市/未来驱动的新模式



孙铮 Zheng Sun



Design Director, ARCHILAND
筑土国际, 设计董事

Low Carbon City / New Model
Driving The Future
低碳城市/未来驱动的新模式

峰会日程
SUMMIT
PROGRAMME

第三天 2023年9月23日
DAY 3 23 September 2023

图示:

-  该嘉宾为圆桌论坛参与嘉宾
-  该嘉宾为圆桌论坛主持人

10:00 – 10:30



青山周平 Shuhei Aoyama

Partner & Principal Architect, B.L.U.E. Architecture Studio Founding B.L.U.E.建筑设计事务所，创始人兼主持建筑师

Hyper Local Design
混合型在地设计



唐耐雯 Tina Tang

Founder, theTANG Hotel & EOSO Hotel
阿那亚 theTANG唐舍酒店 & EOSO云颂酒店，创始人

Hyper Local Design
混合型在地设计

10:30 – 11:00



陈显伟 Lucky Chan

President, Canbeauty Hotel Group's China
笙美酒店集团CMG中国，总裁

Holistic Wellness Strategies
全方面健康策略

11:00 – 11:30



汤振宇 Mars Tang

Engineering Director, Technical Services, Hilton Enterprise Management (Shanghai) Co., Ltd.
希尔顿企业管理(上海)有限公司技术服务部，工程总监

Zero Waste Hospitality
零浪费的酒店

13:30 – 14:00



叶青 Qing Ye

Chairman, Shenzhen Institute of Building Research Co., Ltd.
深圳市建筑科学研究院股份有限公司，董事长

Origin from Heart, Turn-Key from Green to Gold
从心开始，点绿成金

14:00 – 14:10



Patricia Viel

CEO, Partner of ACPV ARCHITECTS Antonio Citterio Patricia Viel
ACPV ARCHITECTS Antonio Citterio Patricia Viel, CEO & 合伙人

Flexibility and Wellbeing in the Workplace
工作场所的灵活性和幸福感

14:10 – 14:30



方颖霭 Elaine Fang

M Moser Associates, Associate Director
穆氏建筑设计，副总监

The “Scales” of Humanized Design in Workplaces
办公空间设计：人性化“尺度”

14:30 – 15:00



秦振辉 Freck Qin

Principal, Studio Director, Gensler
Gensler晋思建筑设计事务所，副总裁；工作室总监

The Agile Workplace
高效灵活的办公场所

11:30 – 12:15

PANEL
DISCUSSION
圆桌讨论

How Hotels are Blending Design and Technology for a Greener Tomorrow

如何以设计和科技赋能酒店，创建绿色未来



陈显伟 Lucky Chan

President, Canbeauty Hotel Group's China
笙美酒店集团CMG中国，总裁



Cody J Allen

China Managing Director, Stey Stey, 中国区董事总经理



白鹏 Li Bai

Senior expert & Chief Planner, the OCT Northern Investment Co.Ltd
华侨城北方集团高级专家，总规划师

15:00 – 15:45

PANEL
DISCUSSION
圆桌讨论

The Empathic Workplace

人性化的办公场所



陈敬娴 Simone Chen

The founder of Vestibule Consulting & little-known, the executive editor-in-chief of Shanghai Articles, the guest editor-in-chief of OUI Art
思庭文化 & little-known内容平台创始人，《上海百货》执行主编，OUI Art客座主编



Laura Kohler

Chief Sustainability & DEI Officer, Kohler Co.
科勒集团 可持续发展多元共融首席执行官



Pearl Tang

Senior Partner, Foster + Partners
Foster + Partners, 高级合伙人



陈昌群 Ivan Chen

Vice President of Hotel Lifecycle & Growth, Greater China, IHG Hotels & Resorts
洲际酒店集团，大中华区酒店开业事业部副总裁



秦瑞筱 Ray Qin

Senior Director (M&E), WYNDHAM HOTELS & RESORTS
高级工程总监，温德姆酒店集团



陈夏青 Summer Chen

Director, Cushman&Wakefield Sustainability Services, Greater China
戴德梁行大中华区可持续发展服务平台董事



戚山山 Shanshan Qi

Global Sustainable - Female Frontier, Principal, STUDIO QI ARCHITECTS
STUDIO QI建筑事务所，全球可持续女性先锋，主持建筑师

工作坊日程
WORKSHOP
PROGRAMME

第一天 2023年9月21日
DAY 1 21 September 2023

图示:
该嘉宾为圆桌论坛参与嘉宾
该嘉宾为圆桌论坛主持人

11:00 – 11:30
RELEASE OF THE WHITE PAPER ON GREEN AND LOW CARBON DEVELOPMENT IN THE RETAIL AND CONSUMER GOODS INDUSTRY
《零售和消费品行业绿色低碳发展白皮书》发布
孙瑾 Alex Sun
Chief Sustainability Officer of Envision Group
远景科技集团首席可持续发展官
Release of the White Paper 白皮书发布
鄧華 Fiona Lang
Vice Chair and Partner, SynTao Consulting Co., Ltd
北京商道纵横管理咨询有限公司，董事兼合伙人
The Introduction to the White Paper on Green and Low Carbon Development in the Retail and Consumer Goods Industry
《零售和消费品行业绿色低碳发展白皮书》介绍
孙瑾 Alex Sun
Chief Sustainability Officer of Envision Group
远景科技集团首席可持续发展官

吴璇 Xuan Wu
Manager of Corporate Governance Department, China Association for Public Companies
中国上市公司协会公司治理部高级主办
余江雪 Jiangxue Yu
Leader of Sustainability Committee, MUJI
无印良品可持续发展委员会负责人
夏艳宏 Uta Xia
Sustainable Change Management Leader, Decathlon China
迪卡侬中国，可持续发展变革负责人
鄧華 Fiona Lang
Vice Chair and Partner, SynTao Consulting Co., Ltd
北京商道纵横管理咨询有限公司，董事兼合伙人

11:35-12:30
常雯 Wen Chang
Partner of BANG Media & Founder of GOGREEN
BANG Media合伙人
GOGREEN创始人
徐睿通 Yoki Xu
CEO, Beijing Magnetic Technologies Co.,Ltd
北京磁与科技有限公司，总经理
Magnetism and SPACE
磁与空间

13:30-15:15
THE BLACK TENT AND NOMADIC CULTURE: SUSTAINABLE DEVELOPMENT FROM THE VIEW OF NATURA
从黑帐篷看游牧文化与可持续发展自然观
刘达 Da Liu
Brand Manager, Matsu
玛祖铭立，品牌经理
The Spirit and Wisdom of Nomadism 游牧精神与智慧
张雷 Lei Zhang
Founder, Rong Design Library / Pinwu Studio
融设计图书馆 品物流形，创始人
Craftsmanship and Contemporary Design from Yaks 来自牦牛身上的手工艺与当代设计
王硕 Shua Wang
Founding Partner, META-Project | META-Research
META-工作室 | META-跨界研究院，创始合伙人
Nature's Way in the case of Black Tent 黑帐篷的自然之道

PANEL DISCUSSION 圆桌论坛
陈敬娟 Simone Chen
The founder of Vestibule Consulting & little-known, the executive editor-in-chief of Shanghai Articles, the guest editor-in-chief of Oui Art.
思庭文化 & little-known内容平台创始人，《上海百货》执行主编，Oui Art 客座主编
刘达 Da Liu
Brand Manager, Matsu
玛祖铭立，品牌经理
张雷 Lei Zhang
Founder, Rong Design Library / Pinwu Studio
融设计图书馆 品物流形，创始人
王硕 Shua Wang
Founding Partner, META-Project | META-Research
META-工作室 | META-跨界研究院，创始合伙人

15:20-15:50
材见船长 Dan
Owner-Principal, m-seen
m-seen，主理人
Discovering the World of Sustainable Materials
走进可持续材料的世界

16:00-17:30
Chris Lefteri
Founder, Chris Lefteri Design
Chris Lefteri Design，创始人
Changing the Way You Think About Materials
改变你对材料的看法

工作坊日程
WORKSHOP
PROGRAMME

第二天 2023年9月22日
DAY 2 22 September 2023

图示:
该嘉宾为圆桌论坛参与嘉宾
该嘉宾为圆桌论坛主持人

10:30-12:30
NEAR & DISTANT:
EXPLORING
SUSTAINABLE DESIGN
FOR OUR FUTURE

身旁及远方



赵荷辉 Hehui Zhao

Strategic Service Designer; Bachelor's degree from the Central Academy of Fine Arts; Master's degree from the Royal College of Arts
战略服务设计师; 英国皇家艺术学院服务设计专业, 硕士; 中央美术学院城市设计学院家居产品设计专业, 学士

Carbon Empowerment Society
碳权力社会制度



杨睿恩 Ruien Yang

Sustainable product designer; singhua International School, senior
可持续产品设计师; 清华大学附属中学国际部11年级, 学生

Boomerang
回旋

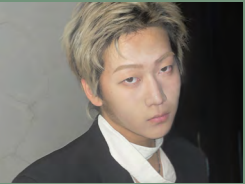


梅渝 Yu Mei

Sustainable Product Designer;
Designer of pet home products;
Bachelor's degree in Home Product Design from China Central Academy of Fine Arts
可持续产品设计师; 中央美术学院城市设计学院家居产品设计专业, 学士

Backrest and table made of Entero-morpha
浒蓬具生

PANEL DISCUSSION 圆桌论坛



郭云飞 Yunfei Guo

Sustainable product designer; Fashion designer Bachelor of Home Product Design, Central Academy of Fine Arts
可持续产品设计师; 中央美术学院城市设计学院家居产品设计专业, 学士

WASTE BLOOD
废血



谈雅兰 Yalan Dan

Sustainable Product Designer;
Master's degree of University of art London Central Saint Martin Furniture Design; Bachelor's degree of Home Product Design from China Central Academy of Fine Arts
可持续产品设计师家具设计师; 伦敦艺术大学中央圣马丁学院, 珠宝陶瓷家具设计专业硕士; 中央美术学院城市设计学院, 家居产品设计专业学士

Furniture First Aid Kit (F.F.A.)
家具急救包



廖林轩 Linxuan Liao

Sustainable Product Designer;
Bachelor's degree in Home Product Design from China Central Academy of Fine Arts
可持续产品设计师; 中央美术学院城市设计学院, 家居产品设计专业学士

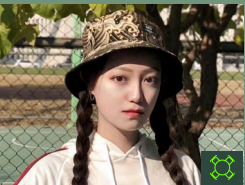
Garments Cube
衣立方



杨尊杰 Jackie Yang

Master Degree in Architecture and Interior Design from London Metropolitan University; Lectured in University College London and London Metropolitan University; Guest lecturer of the Central Academy of Fine Arts
建筑、室内、家具设计师; 英国伦敦都会大学建筑与室内设计硕士; 曾担任英国UCL, LONDON MET建筑系客座讲师; 现任中央美术学院课聘教师

13:30-14:00



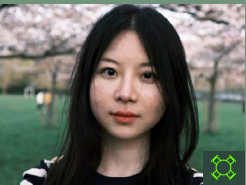
吉诺 Gino

Sustainable Product Designer;
Bachelor's degree in Home Product Design from China Central Academy of Fine Arts
可持续产品设计师; 中央美术学院城市设计学院家居产品设计专业, 学士



梅渝 Yu Mei

Sustainable Product Designer;
Designer of pet home products;
Bachelor's degree in Home Product Design from China Central Academy of Fine Arts
可持续产品设计师; 中央美术学院城市设计学院家居产品设计专业, 学士



赵荷辉 Hehui Zhao

Strategic Service Designer; Bachelor's degree from the Central Academy of Fine Arts; Master's degree from the Royal College of Arts
战略服务设计师; 英国皇家艺术学院服务设计专业, 硕士; 中央美术学院城市设计学院家居产品设计专业, 学士



陈宇 Yu Chen

Director of the Supply and Demand Working Committee, China Building Decoration Association
中国建筑装饰协会供需工作委员会主任

Extend the future of Kitchen Life
岩展厨居未来

14:00-14:30



余倩琪 Emma Yu

Creative Director, Dress Green
Dress Green, 创意总监

Make Your Uniform More Unique - Giving a New Life to Textiles
校服制服改造-赋予衣物意义

14:35-15:15



李浩强 Bob Lei

ZENCE OBJECT TECHNOLOGY CO., LTD, Co-founder, Brand Director
牲物科技有限公司, 联合创办人兼品牌部总监

Creative Solutions for Oriental Sustainable Living
东方永续牲活

15:55-16:25



朱欣琦 Stefan Zhu

Spartec(Suzhou) Co.,Ltd/BD director of global market
博拓(苏州)新能源技术有限公司, 国际市场总监

How to balance the Environment between Indoor and Outdoor
舒适空调与可持续发展

15:20-15:50

ARITCO'S SHARING:
THE IMPORTANCE OF
SUSTAINABLE DESIGN
FOR MANUFACTURES
AND SPACE DESIGN

瑞特科主题分享: 可持续性设计对制造企业和空间设计的重要性



康睿涵 Ruihan Kang

Zizai Design, Branding Manager
自在设计, 品牌经理

The Spirituality of Space
空间的精神性

16:30-17:30

SUSTAINABILITY AS A SLOW BUSINESS

可持续作为一门慢生意

PANEL DISCUSSION 圆桌论坛



张云亭 Yunting Zhang

Editor of Design Column at YiMagazine
《第一财经》YiMagazine编辑

工作坊日程
WORKSHOP
PROGRAMME

第三天 2023年9月23日
DAY 3 23 September 2023

图示:
该嘉宾为圆桌论坛参与嘉宾
该嘉宾为圆桌论坛主持人

10:15-10:25



赵轲 Sissi Chao

Founder, RePlasTerial
塑愈，创始人

How can We turn Plastic
Waste into Architectural
Materials?
废弃塑料变身低碳建筑
新材料

10:30-11:30

RURAL REJUVENATION
AND SUSTAINABLE
CONSTRUCTION

乡村复兴与可持续营造



罗宇杰 Yujie Luo

Founder of LUO studio, an architect;
Teacher of construction project of School
of Architecture; Central Academy
of Fine Arts; instructor of University
Joint construction Festival; permanent
member of the alumni Association of
Central Academy of Fine Arts
建筑师; LUO studio, 创始人; 中央美术
学院建筑学院建造课题教师; 高校联合建
造节指导老师; 中央美院校友会常任理事

Sustainable Rural Construction
乡村的可持续营造



周宇 Yu Zhou

Chairman of the National Innovation
Alliance of Wood Culture and Creative
Industry; National Forestry and Grass
Bureau
国家林草局木文化创意产业国家创新
联盟理事长

Wood Building Materials and the
Creation of Rural (regional) Cultural
Environment
可持续木质建筑材料与乡村(地域)文
化环境的打造

11:30-12:30

TOWARDS A GREENER
FUTURE

构筑绿色未来



张颖玲 Haoling Zhang

The co-founder of the Heroad
Investments, the founder and the
chairman of the Heroad Foundation
羲融善道联合创始人、羲辰公益基金
会理事长

ESG投资:
促进企业, 财富, 社会共同可持续发展



吴吉明 Jiming Wu

Deputy Secretary-General of the
Standing Committee of Beijing Society
of Civil Engineering and Architecture
北京土木建筑学会常委副秘书长

The Rural Revitalization Section of the
China Pavilion at UIA World Congr-
ess of Architects Copenhagen 2023
哥本哈根世界建筑师大会中国区展乡村
振兴版块概述

PANEL DISCUSSION 圆桌论坛



毛林海 Linhai Mao

General Manager of Zhonglin Green
Carbon (Beijing) Technology Co., Ltd
中林绿碳(北京)科技有限公司,
总经理



邹涛 On Tao Zou

Director of Department of Sustainable
City Planning in Tsinghua Tongheng
Urban Planning and Design Institute
(THUPDI)
清华同衡规划设计研究院生态城市研
究所, 所长



李方正 Fangzheng Li

Beijing Forestry University, Professor,
Beijing Science and Technology
Association youth lifting talents
北京林业大学, 副教授, 北京市科协青
年托举人才



佟欣时 Alicia Tung

Managing Director, Bloomberg Green
彭博绿金, 大中华区董事总经理



张颖玲 Haoling Zhang

The co-founder of the Heroad
Investments, the founder and the
chairman of the Heroad Foundation
羲融善道联合创始人、羲辰公益基金
会理事长



吴正锐 Robert Wu

Vice President, IWBI China
国际 WELL 建筑研究院, 中国区副总裁



胡建宇 Martin Hu

Deputy Assurance Leader/ Climate &
Sustainability Partner of Deloitte China
德勤中国鉴证服务副主管合伙人/德勤中
国气候变化与可持续发展合伙人

PANEL DISCUSSION 圆桌论坛 DESIGN THE SUPERSTRUCTURE FOR THE SUSTAINABILITY 设计可持续的企业架构



万慧 Hui Wan

Content Director, Bloomberg Green,
China
彭博绿金内容总监

13:30-14:30

RELEASE THE DATA OF
YCJ'S RESEARCH RESULTS
"RESEARCH REPORT ON
THE DEVELOPMENT OF
ECOLOGICAL ART IN CHINA"
——SUSTAINABLE
INITIATIVES OF A
INTERNATIONAL PUBLIC
ORGANIZATION

《中国生态艺术发展研究
报告》数据发布——
一家国际公共组织的生态倡
议



董媛 Jing Yuan

Founder, YCJ International Ecological
Art Association
YCJ国际生态艺术协会, 创始人

钻石冠名合作伙伴

DIAMOND PARTNERS



KOHLER

BELIEVING IN BETTER

许以更好的未来

K150 | 科勒 KOHLER 150周年

KOHLER 科勒
KOHLER

2-130

科勒公司创立于1873年，是迄今美国最大的家族企业之一。150年来，科勒秉承敢创精神，以卓越品质和创新设计，引领每一个使用科勒产品和服务的人不断体验优雅生活。

Founded in 1873 and headquartered in Wisconsin, USA, the Kohler Company is one of the largest family-owned businesses in America. Throughout the past 150 years, Kohler has been committed to creating a gracious life-style among its customers, setting the standard of excellence, and pushing the limits of design.

T / 手机请拨: 400-820-2628
座机请拨: 800-820-2628
www.kohler.com.cn

金牌赞助商

GOLD SPONSORS

Aritco

2-24

瑞特科电梯有限公司成立于1995年，源自瑞典，足迹遍布全球40多个国家，其电梯产品屡获国际设计大奖。目前在中国已有50家实体展厅。

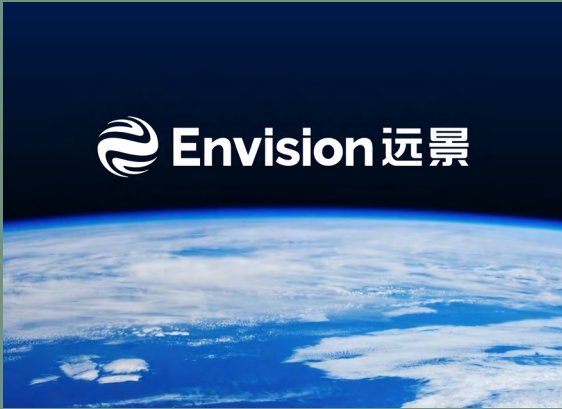
Aritco Lift AB was founded in 1995 and of the origin from Sweden with global footprints over 40 countries and is an award-winning lift manufacturer. Currently, Aritco has opened 50 physical showrooms in China.

T / +86 138 1886 1253
E / info.china@aritco.com
www.aritco.com.cn



金牌赞助商

GOLD SPONSORS



Envision 远景

Envision Group 远景科技集团
Envision Group

2-102

远景科技集团是全球领先的新型能源系统公司，以“为人类可持续未来解决挑战”为使命，由智能风电、智慧储能技术和绿氢解决方案企业远景能源、动力电池企业远景动力、智能物联网企业远景智能三大主要业务板块组成。

Envision Group is a world-leading company providing renewable energy system solution for global enterprises, governments and institutions. With the mission of 'solving the challenges for a sustainable future', Envision continues to promote wind and solar as the 'new coal', batteries and hydrogen fuels as the 'new oil', the AIoT network as the 'new grid', net zero industrial parks as the 'new infrastructure' and an ecosystem of net zero technology as the 'new industry', to create a net zero world.

T / +86 157 3881 9457
E / yongping.chen@envision-digital.com
www.envision-group.com

I2COOL LIMITED 創冷科技有限公司
I2COOL LIMITED

2-80

创冷科技是一家位于香港城市大学孵化的科技初创公司，于2021年11月推出了一种节能制冷涂料。它利用外太空作为制冷源，在建筑、光伏等领域找到了应用。创冷科技的全球扩张加速了节能技术的应用，有助于可持续发展和碳中和目标的实现。

i2Cool, a Hong Kong tech startup incubated at City University, developed an energy-efficient cooling paint, launched in Nov 2021. It uses outer space as a cooling source, finding applications in construction, photovoltaics, and more. i2Cool's global expansion accelerates energy-saving tech adoption, aiding sustainability and carbon neutrality goals.

T / +86 186 7665 5628
E / Matt@i2cool.com
www.i2cool.com



Grundfos

2-26

格兰富是全球水泵和水解决方案的领军者。自1945年成立以来，格兰富始终致力于为应对世界水资源和气候挑战提供开创性解决方案，提高人们的生活品质。

Grundfos is a global leader in pumps and water solutions. Since its establishment in 1945, Grundfos purpose is to pioneer solutions to the world's water and climate challenges and improve quality of life for people.

T / +86 150 2194 8060
E / amlin@grundfos.com
www.grundfos.cn

参展品牌 EXHIBITORS



RJ Models 香港港基建筑模型 RJ Models

RJ Models 成立于1995年，总部位于香港，三十年来专注于高端建筑模型的研发及制作，为世界各地的建筑设计师、开发商和政府等提供服务，并以卓越的质量和服務享誉全球。

RJ Models specializes in making architectural models for top class architectural designers and developers worldwide. Founded by Ray Cheung in 1995, Hong Kong. Since then, Ray and the team strive to build the world's highest quality architectural models with the highest efficiency and achieved high reputation in the field. RJM have built models for numerous landmark sites around the world, be it for real estates, competition bidding, urban master-planning or for museum display.

T / +86 139 0246 8129 (商务洽谈)
E / joyce@rjmodels.com.hk
www.rjmodels.com.cn



RAC studio 产学研设计教育设计中心 RAC studio

RAC Studio于2015年由毕业于哈佛大学、宾夕法尼亚大学的景观&建筑设计师在美国成立。致力于探索前沿学术研究和教育,关注设计产业的顶尖趋势和未来发展方向;成立以来与国内外知名高校、政府、知名设计公司、行业媒体等保持着紧密的合作。

RAC studio was established in the United States in 2015 by landscape & architectural designers graduated from Harvard University GSD and UPENN of the University of Pennsylvania. Committed to exploring cutting-edge academic research and education, focusing on the top trends and future development directions of the design industry; RAC STUDIO has been established for many years with top universities, governments, and well-known design companies at home and abroad., Industry media, etc. maintain close cooperation.

T / +86 132 6288 3078 (商务洽谈)
E / qhj@racstudio.cn
racstudio.cn/index.html

Newspace 2-3

色彩空间是一个以追求空间至臻为美、以人性化灵魂、以艺术性设计为核心理念的室内空间专业设计团队。

Color space is a professional interior space design team that pursues the perfection of space as the beauty, humanization as the soul, and artistic design as the core concept.



Deartree 第二树循环家具 Deartree

第二树循环家具2009年成立于北京，拥有近10万平米展厅+仓储面积，遍布全国10余城，以品质二手+自有新品替代相结合的家具循环生态，降低材料资源的消耗，助力企业实现ESG碳减排。

Since founded in Beijing in 2009, Deartree has established nearly 100,000 sqms of showroom and warehouse in more than 10 cities across the country. Deartree endeavors to build a circular furniture ecology combining the quality used with the self-developed new. Through reducing the consumption of materials and resources, enterprises' ESG can be effectively expedited.

T / +86 138 1162 5706 (商务洽谈)
E / zhangdan@deartree.com
www.deartree.com



DRESS GREEN 2-8

Dress Green 是一家由香港设计师主理，以设计为导向的社会企业。我通过联系和教育机构和社区，以减少、回收和重新利用时尚废物。我们使用旧校服和旧制服设计的纪念品获得了香港以及亚洲的设计奖项。我们亦透过提供工作机会予长者及家庭主妇，以推动共融经济。

Dress Green is a design-oriented social enterprise run by a group of Hong Kong designer. We aims to reduce, recycle and reuse fashion waste by connecting and educating institutions and communities. Our souvenir designs using old school uniforms and old uniforms have won design awards in Hong Kong and Asia. We also promote an inclusive economy by providing job opportunities to the elderly and housewives.

T / +86 167 2970 2084 (商务洽谈)
E / emma.yu@dressgreen.org
www.dressgreen.org/Home

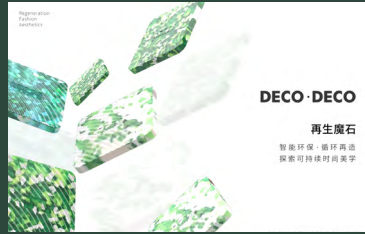


Compact wood 克姆伍德 Compact wood

Compactwood克姆伍德-绿色建筑及装饰的安全之选，旗下产品有室内外系列，产品具备高阻燃、超环保、防水防潮防腐耐侯等特性，颜色丰富、品类众多，可满足不同客户多样化需求，为世界各地建筑提供独特个性的绿色材料。

Compactwood - the safe choice of green building and decoration, its products have indoor and outdoor series, products with high flame retardant, super environmental protection, waterproof, moisture, corrosion resistance and other characteristics, rich colors, a wide range of categories, can meet the diverse needs of different customers, to provide unique green materials for buildings around the world.

T / +86 186 0126 3930 (商务洽谈)
E / 254307142@qq.com
www.compactwood.cn

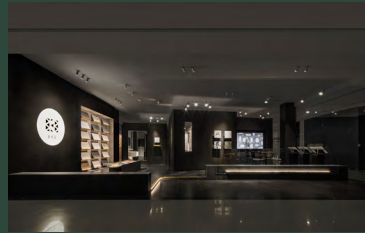


DECO·DECO树脂玻璃 DECO·DECO

DECO·DECO树脂玻璃，聚焦环保可持续发展的研发理念，专注高端新型材料的研制及成品设计开发。产品安全、轻质、透光度高、可塑性高等优势，广泛应用于商业及家具灯饰等领域。

DECO·DECO safety art glass focuses on the research and development concept of environmental protection and sustainable development, focusing on the development of high-end new materials and finished product design and development. The product has the advantages of safety, lightweight, high transparency, and high plasticity, and is widely used in commercial and furniture lighting fields.

T / +86 137 1931 9433 (商务洽谈)
E / carmen.zhang@dcddci.com
www.decocode.com



BKB 明厨明卫 BKB

BKB明厨明卫成立于1996年，是专注于家居建材行业的营销服务品牌，是中国国际高端家居、建材代理商及总代理商，我们采用集成采购模式，旗下拥有瓷砖、石材、卫浴、橱柜、马赛克、壁纸、涂料、木地板等多个国际进口品牌，二十多年来，始终致力于为追求个性的高端人士实现全球定制。

Founded in 1996, BKB is a topbuilding material supplier in China distributing high-end international materials including ceramic tile, natural stone, bath ware, kitchen cabinet, mosaic, wallpaper, paint and wood flooring. BKB adopts an integrated procurement system and has become the sole distributor and main distributor of multiple international brands such as CERAMICHE PIEMME, SICIS, KEROS, CASALGRANDE PADANA etc. For more than 20 years, BKB attracts talents from all over the world committed to deliver bespoke design, knowledgeable services and brilliant quality for global consumers.

T / +86 185 1363 5861 (商务洽谈)
E / wangquan9890@dingtalk.com
www.bkbchina.com

CERAMICHE PIEMME presented by BKB

从1977年开始，意大利CERAMICHE PIEMME与世界著名时尚品牌“VALENTINO”合作，创立了VALENTINO（华伦天奴）瓷砖品牌，至今已合作超过40年。“永不过时”是VALENTINO的核心理念，多年来以其独特的时尚灵感，始终站在时尚潮流的最前沿。

In 1977, the creative mind of luxury brand VALENTINO was combined with the experience of CERAMICHE PIEMME. The brand VALENTINO by CERAMICHE PIEMME was thus born and has influenced the industry for more than 40 years. "Timeless beauty" is the main feature of VALENTINO's DNA. With its special inspiration in the fashion industry, VALENTINO by CERAMICHE PIEMME has established its worldwide reputation for years.

T / +86 185 1363 5861 (商务洽谈)
E / wangquan9890@dingtalk.com
www.bkbchina.com



KEROS 快乐事 presented by BKB KEROS presented by BKB

KEROS是西班牙三大瓷砖品牌之一，目前已成为瓷砖制造行业的领先者。如同西班牙这个国度一样，奔放又热情，KEROS瓷砖体现了明亮大胆、色彩丰富、自然柔和的美学特点，营造出轻松舒适、悠闲自得的生活空间。

KEROS is one of the top three ceramic tiles leaders in Spain. With over 40 years of experience and making use of the newest technologies to bring designs to life, KEROS always tries to offer the best and most welcoming services like the culture of Spain. The brightness, color and authentic design of KEROS bring the market ceramics with soul.

T / +86 185 1363 5861 (商务洽谈)
E / wangquan9890@dingtalk.com
www.bkbchina.com



CASALGRANDE PADANA presented by BKB

意大利Casalgrande Padana公司经历60逾年不断创新、制造顶尖瓷砖的历史，成为全球顶级品牌。我们产品100%为意大利制造。公司专注于技术的创新和生产流程的可持续性，制造性能卓越的多功能材料。拥有独特的表面和涂层，广泛地适用于各类建筑和室内家装。

Casalgrande Padana has been manufacturing cutting-edge ceramic tiles for 60 years, providing innovative and environment-friendly solutions for the creation of floor and wall covering. The Company is intensively engaged in research and experiments for continuous product improvement in terms of appearance and performance. All its manufacturing, research and innovation take place in 100% Italian-based plants and laboratories.

T / +86 185 1363 5861 (商务洽谈)
E / wangquan9890@dingtalk.com
www.bkbchina.com



NEWHOPO 2-36

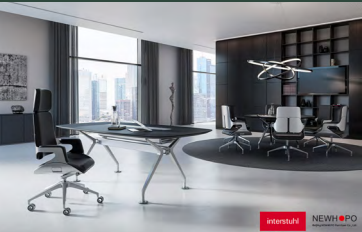
NEWHOPO成立于2003年，致力于整合来自世界各地的高品质家具资源，以便世界上的顶尖设计能成为您工作与生活中舒适、精致、愉悦的一部分。NEWHOPO和合作伙伴可以为您提供最贴心的家具定制服务，任何风格、任何环境都会以您的意志为核心，进行专项定制。——NEWHOPO承诺为您创造恒久价值。

NEWHOPO was founded in 2003 with a commitment to integrating high-quality furniture resources from around the world so that the best products become comfortable, delicate, and joyful companions in your work and life. NEWHOPO and its partners can provide you with the most thoughtful furniture customization services, specializing in any style or environment. NEWHOPO creates lasting value for you.

T / +86 137 0113 1280 (商务洽谈)
E / mkt@newhopo.com
sds23.newhopo.com

参展品牌

EXHIBITORS



Interstuhl 英饰都 2-36

Interstuhl presented by NEWHOPO

Interstuhl品牌为使用者在办公环境下健康的坐姿负责，同时也为个性化的办公场景提供了全新的系统解决方案。Interstuhl是世界公认的欧洲领先办公家具制造商之一。

The Interstuhl brands stand for healthy sitting in office environments and innovative system solutions for individual office landscapes. Interstuhl is one of the leading manufacturers in Europe.

T / +86 137 0113 1280 (商务洽谈)
E / mkt@newhopo.com
sds23.newhopo.com



Flokk 2-36

Flokk presented by NEWHOPO

Flokk是欧洲高品质座椅解决方案的市场领导者。Flokk相信创造家具要满足人们的基本需求，同时也要考虑对未来世代的影响。Flokk生产的家具拥有最小化的环境足迹，为客户提供长寿命、有意义的产品，对世界产生积极影响。

Flokk is a market leader for high-quality seating solutions in Europe. We believe in creating furniture that meets the essential needs of people while also considering the impact on future generations. Our furniture is produced with the lowest possible environmental footprint, providing customers with long-lasting and meaningful products that make a positive impact on the world.

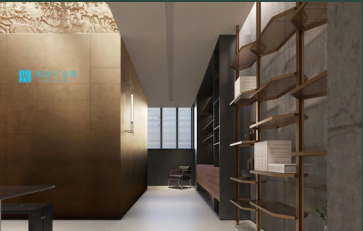
T / +86 137 0113 1280 (商务洽谈)
E / mkt@newhopo.com
sds23.newhopo.com

AO-FIRE 2-40

奥胜火金属从事高档空间装修金属定制加工。公司于北京/福州/厦门/佛山拥有生产基地。服务于装修公司，室内设计师。产品广泛应用在豪宅别墅/售楼部/企业总部/餐饮空间/会所空间。

Aofire Metal is engaged in customized processing of high-end space decoration metals. The company has production bases in Beijing/Fuzhou/Xiamen/Foshan. Serving decoration companies and interior designers. The product is widely used in luxury villas/sales departments/corporate headquarters/catering spaces/clubs/tea spaces.

T / +86 138 1195 0388 (商务洽谈)
E / 584162954@qq.com
www.bxg01.com



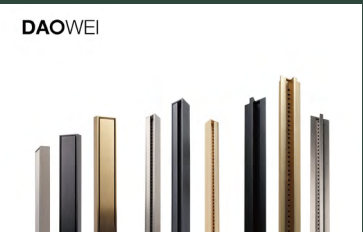
DAOWEI 到位地漏 2-42

DAOWEI

“到位”是地漏国标的主要起草单位之一，十余年来持续专注于全铜美学定制地漏、家居整体排水系统的研发工作，坚持以原创设计为核心，打造国际一流产品，带给用户美好生活体验。

"DAOWEI" is one of the main drafting units of the national standard for floor drains, focusing on the research and development of all-copper aesthetic custom floor drains and home overall drainage systems. It adheres to the core concept of original design, creates world-class products, and brings users a better life experience.

T / +86 158 8860 0182 (商务洽谈)
E / daoweidilou@163.com
www.daoweidilou.com



CHAZENCE 茶牲 2-44

CHAZENCE

茶牲项目由澳门团队主导，以可持续创新为核心，结合科学、设计美学，引领以「茶」为主导的循环设计实践，以东方文化与未来前沿设计共融，促进全球可持续发展目标。

Zence Object Technology is a company that is innovative and based in the Greater Bay Area, dedicated to solving global waste problems. Using technological innovation, we transform inconspicuous waste materials like bamboo, Platycodon, grandiflorum, tea residue, and more into genuine Eastern eco-friendly materials that are integrated into our daily lives.

T / +86 177 6571 8409 (商务洽谈)
E / hue@zenceobject.com
www.zenceobject.com



Air Purifier 空气净化器 2-48

Air Purifier

smAIRt 远渡重洋，将芬兰的洁净空气带到中国，独有的smAIRt专利技术，将霉菌、病毒、细菌、甲醛、化工挥发物、烟雾、气味等有效过滤，让你每天都能呼吸来自森林的新鲜空气。

smAIRt aims to bring Finland's pure air to you, for its unique smAIRt patented technology, we can filter mold, viruses, bacteria, formaldehyde, chemical compounds, smoke etc., let you can breath the fresh air from the forest every time.

T / +86 130 0326 1339 (商务洽谈)
E / Louisa@eag-metal.com
www.air0.fi



Sunon 圣奥 2-50

Sunon

圣奥科技股份有限公司创立于1991年，致力于为全球用户提供健康环保、舒适智能的办公商用空间整体解决方案。产品远销全球122个国家和地区，服务了176家世界500强企业及308家中国500强企业，如华为、阿里巴巴、Google、可口可乐等，累计获得1487项专利、35项欧美产品设计大奖。

Sunon Technology Co., Ltd., founded in 1991, is dedicated to providing global users with healthy and efficient integrated solutions for office and commercial spaces. Sunon's products are exported to 122 countries and regions worldwide. Sunon has provided services to 176 Fortune Global 500 companies and 308 Chinese Fortune 500 companies, including Huawei, Alibaba, Tencent, Google, Coca-Cola, and many others. Sunon has accumulated a total of 1,487 patents and received 35 design awards in Europe and America.

T / +86 135 2060 4702 (商务洽谈)
E / yashu.li@isunon.com
www.isunon.com



Frisquet 法国富丽凯 2-52

Frisquet

法国富丽凯公司是最早生产燃气采暖热水炉的欧洲传奇企业，创建于1936年。产品产自位于巴黎总部的工厂。86年的历史积淀和坚持不懈的技术创新使其成为享誉世界的至尊经典品牌。

Founded in 1936, Frisquet was known as the earliest European legendary company to study and manufacture the heating gas boilers. It became one of the worldwide prestige brands in the domain benefited from its 86 years of historical accumulation and permanent technology innovation.

T / +86 130 3106 1501 (商务洽谈)
E / wwang@frisquet.com.cn
www.frisquet.com.cn

bfom 物极建筑装饰材料 2-56

bfom

bfom重塑树脂板利用废弃边角料通过低碳再生技术将废料与树脂板结合，创新的色彩组合和多变的纹理，以立体的表现手法层层交错，打造独特的空间效果。可以匹配任何领域商业场所设计。

BFOM reshapes resin boards by utilizing waste scraps and low-carbon regeneration technology to combine waste with resin boards. With innovative color combinations and diverse textures, it creates a unique spatial effect through three-dimensional expression techniques that interlace layers. Can match any field of commercial venue design.

T / +86 137 6469 6581 (商务洽谈)
E / bfom_vip@126.com
www.bfomvip.com



ABC-STONE 爱蓓石材 2-62

ABC-STONE

佛山市爱蓓石材建材有限公司(ABC-STONE)，专注于天然石材马赛克的设计、生产和销售，致力于为有想法高品位的用户提供灵感选材和专业的石材配套服务。

ABC-STONE is an original design brand from Foshan, focusing on the design, production and sales of natural stone mosaic, committed to providing users with ideas and high grade inspiration materials and professional stone supporting services.

T / +86 185 2098 8566 (商务洽谈)
E / leon@abcstoneart.com
www.abc-stone.com



德国优尼路科斯铝包木门窗 2-66

UNILUX GmbH

德国优尼路科斯(UNILUX)创建于1955年，是欧洲全木及铝包木门窗及幕墙领域的市场领导者。几乎所有产品都适用于被动屋，超低能耗建筑，其产品集建筑优雅、高效节能于一体。

Founded in 1955, UNILUX is the leading supplier for all-wood and aluminum-clad-wood windows, doors and facades and curtain-walls. All products are suitable for passive houses and green buildings. Through years of innovation and manufacturing technology, A vast product line is designed to complement any type of building, from windows and doors for a high-end luxury villa to the façade of an office complex.

T / +86 152 1032 2276 (商务洽谈)
E / 15210322276@163.com
www.unilux.de



IQAir 2-72

IQAir成立于1963年，是一家总部位于瑞士的空气净化信息科技公司。在全球70多个国家和地区，IQAir为众多家庭、企业、学校、医疗机构和公共场所提供服务，帮助人们免受空气污染侵害。

IQAir is a Swiss air quality technology company founded in 1963. As a global leader in air purification and air quality monitoring products, IQAir helps to protect families, businesses, schools, medical facilities and public spaces from air pollution and air toxins in over 70 countries and regions around the world. We are specialists in new construction air pollution control, PM2.5 air pollution control and anti-microbial air purification.

T / 010-85318571
E / chicka.chai@iqair.com
www.iqair.cn

参展品牌 EXHIBITORS

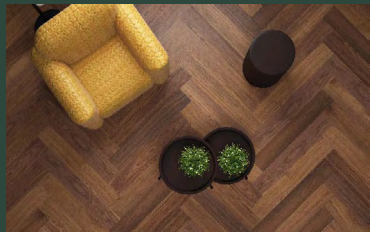


YOUNG LION 扬狮 YOUNG LION

扬狮家具2007年始于中国北京，独立设计师品牌。结合当代时尚潮流和东西方传统文化的融合，独创了法式中国风新古典风格，创立至今已成为生产新古典风格家具的代表，创立了实木家具的现代量化生产模式。

YoungLion is an independent designer brand established in Beijing in 2007. we create a neo-classic Chinoiserie collection by combining contemporary fashion and the traditional cultures both Eastern and Western. We have become a representative of the neo-classic furniture, and created a modern production model for classic furniture.

T / +86 139 1000 7067 (商务洽谈)
E / younglionvip@163.com
www.youngliontrendshome.com



TAT MING 达明 TAT MING

达明集团于1981年创立，产品主要包括墙纸、数码印刷、地板地毯、布艺家具等装饰材料。公司一直致力于把国际最顶尖的装饰材料品牌引入国内市场，为客户提供一个绿色健康的居家空间。

TatMing Group was founded in 1981, the main products include wallpaper, digital printing wallpaper, Wood/vinyl flooring, carpet, fabric, and other decorative materials. The company has been committed to the international top decorative materials brand in the domestic market, to provide customers with a green and healthy home space.

T / +86 138 0186 7853 (商务洽谈)
E / mable@tatming.com
www.tatming.com

Magtech 磁与 Magtech

中国首家专注于“永磁应用集成方案”品牌，为客户提供各类生活场景中磁性产品解决方案，用磁取代传统钉钉涂胶等连接方式，创造出可循环、更便捷、有趣的产品体验。

The first brand focused on integrating permanent magnet applications in China. Provide magnetic product solutions for customers in various life scenarios. Replacing the traditional connection method of nailing and gluing in daily life with magnetic suction. Provide convenient and fun magnetic suction products that can be recycled for human use.

T / +86 185 1818 5695 (商务洽谈)
E / terry@zongmagnet.com

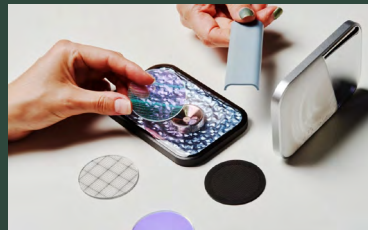


Chris Lab

Chris Lefteri 是世界公认的设计领域内材料及应用的领军权威，是该领域重要的材料专家之一。在过去的十年中，他的工作室作品和出版物在改变设计师和材料行业看待材料的方式上起到了至关重要的作用。

Recognized throughout the world as a leading authority on materials and their application in design, Chris Lefteri is one of the most important materials experts working in his field. For over a decade his studio work and publications have been pivotal in changing the way designers and the materials industry consider materials.

T / +44 7516866476
E / fangzhou@chrislefteri.com
www.chrislefteri.com



Yuegman staircase 悦格曼楼梯 Yuegman staircase

上海悦格曼实业有限公司着眼于全国客户的发展，专注于全国客户开发，生产基地位于江苏省江阴市，拥有数万平方米的标准厂房，全套先进的生产设备，提供销售、设计、研发、生产、安装、售后服务。

Shanghai Yueman Industrial Co., Ltd. focuses on the development of national customer, the production base is located in Jiangyin City, Jiangsu Province, with tens of thousands of square meters of standard plant, a full set of advanced production equipment, to provide sales, design, research and development, production, installation, after-sales service.

T / +86 133 4190 3420 (商务洽谈)
E / 540507903@qq.com
www.jinshu99.com

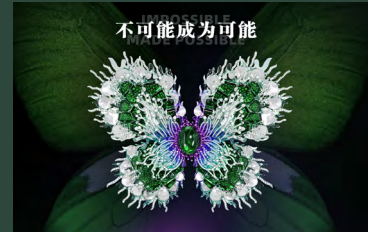


Audi

作为可持续设计峰会的独家冠名合作伙伴，奥迪将携e-tron GT纯电来蓉，呈现品牌如何以革新设计重塑未来可持续生活。

As the exclusive top tier partner of the Sustainable Design China Summit, it will showcase how Audi design is reshaping our future way of living to create a sustainable future for generations to come with a presentation of the Audi e-tron GT.

www.audichina.cn



GAONAS 高纳仕 GAONAS

高纳仕(GAONAS)是隶属于高纳集团旗下品牌，成立于2015年，作为具有环保理念的艺术珠宝品牌，高纳仕(GAONAS)始终坚持“环保、创新、可持续”的设计理念，呼吁减少矿山开采，更好的保护自然生态和不可再生资源，并通过前沿科技与传统手工镶嵌技术制作集环保与美丽共存的艺术珠宝。

GAONAS is a brand affiliated to Gaona Group, which was founded in 2015. As an art jewelry brand with environmental protection concept, GAONAS always adheres to the design concept of "environmental protection, innovation and sustainability", calls for reducing mining, better protecting natural ecology and non Renewable resource, and makes art jewelry that integrates environmental protection and beauty through cutting-edge technology and traditional manual inlay technology.

T / +86 136 7170 2313 (商务洽谈)
E / gaonawangyang@gmail.com
www.gaonas.cn



Dianpin 点品 Dianpin

点品是一家成立于2014年专注于高端品质天然藤编、竹编等手工艺编织装饰及服务的建材有限公司。点品拥有专业的技术团队，可提供多场景、多风格、多题材的天然手工艺编织装饰的个性化设计、定制化需求、工程落地安装、售后维护等一系列服务。

We are a building materials Co., Ltd. founded in 2014, which advocates the spirit of craftsmen, focusing on high-end quality natural rattan weaving, bamboo weaving and other handicraft decorations and services. Our professional and technical team can provide multi-scene, multi-style, multi-topic natural handicraft weaving decoration, personalized design, customized requirements, engineering landing installation, after-sales maintenance and so on.

T / +86 139 1830 3416 (商务洽谈)
E / 690612530@qq.com

MATERIAL AESTHETICS MUSEUM 2-86 材料美学馆

“材料美学馆”采用线上和线下实体店结合的做法，成为每一个城市设计师的选材中心，目标是做建材产品+互联网的一个产业平台，为全国所有的设计公司提供服务。

"Material Beauty Academy" adopts the practice of combining online and offline physical stores to become a material selection center for every urban designer, the goal is to make building materials products + Internet an industrial platform for all design companies in the country.

T / +86 152 1082 8166 (商务洽谈)
E / 353037641@qq.com



BELLA VISTA presented by MATERIAL AESTHETICS MUSEUM

BELLA VISTA 贝莱维斯是专业艺术涂装服务品牌，以水性环保、可持续发展的材料为基础，打造“您的家我们用心”及“设计师的创意实践家”艺术涂装装饰效果！

BELLA VISTA is a professional coating design and service brand. Base on "your home we care" and "creative art for designer", develop decorative paint and plaster effects!



HUI LIN GE 魔琳阁 presented by MATERIAL AESTHETICS MUSEUM

魔琳阁自2013年成立以来，专门致力于高端私人定制的手绘绢画的设计和生，并结合苏绣，使其得以继续传承和发扬。我们的材质大多用真丝，采用中国古老的绢丝裱画工艺进行施裱。

We at HUI LIN GE Studio have been creating handmade silk wallpaper since 2015. We specialize in hand painted silk wallpaper, art screen, decorative painting and precious embroidery. The background is mainly silk, by being mounted with a layer of Xuan paper, used as art wallcovering.



MOSO 摩索竹材 presented by MATERIAL AESTHETICS MUSEUM

MOSO®在相对年轻的竹子行业拥有25年的经验，因其专注于产品质量、创新和可持续性而被公认为全球竹子A品牌。MOSO®拥有遍布50多个国家的国际团队和合作伙伴，不断寻找新的应用和解决方案。

With 25 years' experience in the relatively young bamboo industry, MOSO® is recognised as the global A-brand in bamboo because of its focus on product quality, innovation and sustainability. With an international team and partners in more than 50 countries, MOSO® is continuously looking for new applications and solutions that can be made with the fastest growing plant of the world.

参展品牌

EXHIBITORS



SJX 顺佳兴 presented by MATERIAL AESTHETICS MUSEUM

广东顺佳兴不锈钢有限公司十年来一直致力于定制类高档不锈钢板材表面处理的生产和研究，为工程项目提供不锈钢彩色装饰板。公司拥有一条龙生产设备，工贸一体。

SJX Stainless Steel has been committed to the production and research of surface treatment of customized high-grade stainless steel sheets for ten years.



SPARTEK 思帕 SPARTEK

德国SPARTEK（思帕）于1991年在居斯特罗成立，致力于运用变频技术，研发和生产利用可再生能源的热泵产品。2018年思帕正式进入中国市场，在提供高效热泵解决方案的同时，也提供以毛细管辐射末端和除湿新风设备为主的室内舒适空调系统解决方案。

SPARTEK was founded in 1991 in Güstrow, Germany, dedicated to the use of inverter technology, research and development and production of high efficiency heat pump. SPARTEK formally entered the Chinese market in 2018, provided high-efficiency heat pump solutions, and indoor comfort air conditioning system solutions based on the capillary tube and fresh air dehumidification production.

T / +86 185 5006 4077 (商务洽谈)
E / jiaxu_lu@kst-china.com
www.spartek.cn

JMT LEATHER 吉美特 JMT LEATHER

JMT在英国创立于1990年，是欧洲高品质皮革（真皮）的制造商和供应商，与世界领先的设计师，意大利皮革专家合作，产品用途广泛。JMT 采取全球连锁式仓储销售，保持400多个颜色，为客户实现零库存。

JMT Leather was founded in 1990 in England. It is a manufacturer and distributor of high quality upholstery leathers produced in Italy. JMT is working with the world's leading designers and Italian leather experts. Wide range of products. We keep stocks more than 400 different colors.

T / +86 186 2222 7750 (商务洽谈)
E / jessie@jmtleather.com.cn
www.jmtleather.com



SUNHILL FABRICS

SUNHILL FABRICS 是天津山尚进出口有限公司的面料品牌，配合国内和国外设计师做面料研发，定制生产，配合JMT leather 产品被广泛用于世界级地标建筑的酒店。新推出可持续发展材质产品，共有37个颜色，均在国内备有现货。

SUNHILL FABRICS is the fabric brand of Tianjin Sunhill Industrial Co., LTD. We cooperate with domestic and foreign designers to research and develop fabrics, custom-made fabrics, also, these fabrics combine with JMT leathers were widely used in world-class landmark hotels. New product is sustainable velvet, 37 stock colors are available in China.

T / +86 186 2222 7750 (商务洽谈)
E / jessie@jmtleather.com.cn



Finland Pavilion 芬兰国家馆 Finland Pavilion

芬兰是世界设计领域的领军国家之一。芬兰设计从北欧极简风出发，其作品集实用性和功能性为一体。本次峰会的芬兰展台由PES建筑设计事务所承担设计，共有七个公司参展。该项目由芬兰共和国驻华大使馆、芬兰驻上海总领事馆和芬兰国家商务促进局共同协调承办。

Finland is one of the world's leading countries in design. Finnish design combines practicality and functionality, with Nordic minimalism as its starting point. The Finland Pavilion, designed by PES Architects, presents seven companies. The project is coordinated by the Embassy of Finland in Beijing, the Consulate General of Finland in Shanghai, and Business Finland.



Iittala 伊塔拉 presented by Finland Pavilion

芬兰国粹Iittala，深受大众喜爱，坚守“永恒的设计”理念，注重品质和材料科学，以健康为前提-绝对安全的材质、经久耐用的陶瓷、工艺考究的无铅玻璃，铸就140年的传世经典。

The Finnish quintessence Iittala, loved by the public, adheres to the concept of "timeless design", focuses on quality and material science, and takes health as a prerequisite - absolutely safe materials, durable ceramics, sophisticated lead-free glass, and cast a classic for 140 years.



Ivana Helsinki x SAYYAS 森鹰 presented by Finland Pavilion

森鹰窗业始创于1998年，是首家将内木外铝、性能卓越的德系铝木窗引入国内的企业。森鹰与芬兰顶级设计品牌Ivana Helsinki合作，将把自然、环保、节能、高颜值的产品带给更多中国用户。

Sayyas was founded in 1998 and it is the first enterprise to introduce German aluminum and wood windows with excellent performance. Sayyas collaborates with top Finnish design brand Ivana Helsinki to bring natural, environmentally friendly, energy-saving, and high beauty products to Chinese market.



Lunawood 北欧小院 presented by Finland Pavilion

芬兰原装进口Lunawood Thermowood热改性实木，是行业领导公司，芬兰三家工厂，欧洲占有率超过30%！热改性实木尺寸稳定，无毒无害，在城市生活和自然之间建立了联系，为所有气候提供持久和完全可持续发展木产品。北欧小院电话400-168-3118。

Lunawood Thermowood is an industry leading company with three factories in Finland and a European market share of over 30%! Thermowood has stable dimensions, is non-toxic and Chemical-free, and establishes a connection between urban life and nature, providing fully sustainable development of wood products for all climates. Finngardens Hotline: 400-168-3118.

MOOMIN WATER presented by Finland Pavilion

MOOMIN WATER的水源是100%来自芬兰北萨沃尼亚自然保护区的地下水。除了水源的选择，包装设计更是精挑细选，以再生塑料(rPET)所制成，有助减少耗用原生塑料，全瓶百分百可回收再造，延续北欧国家健康和可持续发展的绿色生活理念。。

The water source of MOOMIN WATER is 100% from groundwater in the North Savonia Nature Reserve in Finland. The packaging design is carefully chosen and made from recycled plastic (rPET).



aarikka presented by Finland Pavilion

源自芬兰的天然木材饰物品牌。

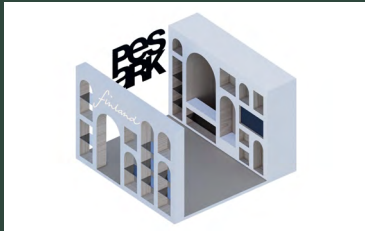
The natural wood jewelry brand, originated from Finland.



LOVI presented by Finland Pavilion

芬兰森林的木制品。芬兰桦木胶合板的奢华美感。

Wooden Creations from the Forests of Finland. Sumptuous beauty of Finnish birch plywood.



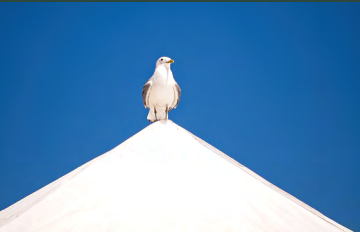
芬兰PES建筑设计事务所 PES-Architects presented by Finland Pavilion

芬兰PES在高要求的公共建筑设计领域拥有55年的经验，在全球范围屡获殊荣，是一家集建筑设计、室内设计、城市设计于一体的国际性综合设计事务所。设计语言侧重于将美学、功能、天然材料与业主的实际需求相结合。于2003年起在中国开展业务。

PES-Architects is an interdisciplinary design practice with 55 years of experience in designing demanding public buildings, operated in China since 2003. The design language focuses on combining beautiful aesthetics and the use of natural materials with functional and user-friendly design. We have designed award-winning projects across a multitude of sectors around the world. PES-Architects is an international integrated design practice of architecture, interior architecture, urban design, shaping the outlook of Nordic architecture in China.

参展品牌

EXHIBITORS



MOI Restaurant and Lounge
presented by Finland Pavilion

2-70

“MOI”由芬兰知名企业北藤公司于2014年策划、投资、打造的最具芬兰生活特色的饮食与文
化融合品牌。其线下餐厅以源自芬兰健康生活
为主题，以“多元文化主义”为核心视角，是幸福
生活方式圈层聚集地。

“MOI” is a brand conceived, invested and
created in 2014 by the well-known Finnish
company BD Technology & Culture Co., Ltd.
Company owned Moi Restaurant & Lounge
is centered around the theme of a healthy
life inspired by Finnish culture, with a core
perspective of “cultural pluralism”, it aims to
build a gathering place for the community of
people seeking a holistic, happiness-oriented
lifestyle.



muurla 穆拉
presented by Finland Pavilion

2-70

达明集团于1981年创立，产品主要包括墙纸、
数码印刷、地板地毯、布艺家具等装饰材料。
公司一直致力于把国际最顶尖的装饰材料品牌
引入国内市场，为客户提供一个绿色健康的居
家空间。

TatMing Group was founded in 1981, the
main products include wallpaper, digital
printing wallpaper, Wood/vinyl flooring,
carpet, fabric, and other decorative
materials. The company has been committed
to the international top decorative materials
brand in the domestic market, to provide
customers with a green and healthy home
space.

海尔集团三翼鸟智慧厨房
TRIWING BIRD Smart Kitchen,
Haier Group

2-108

海尔智家实现了从传统家电时代到物联网时代的
更迭革新，基于互联互通的智慧生态系统，“三
翼鸟”——全球首个场景品牌应运而生，为用户提
供嵌入式厨房场景厨房智慧解决方案。

Haier Smart Home has realized the change
and innovation from the era of traditional
home appliances to the era of the Internet of
Things, based on the interconnected smart
ecosystem, “TRIWING BIRD”, the world's first
scene brand, came into being, providing users
with embedded kitchen smart solutions for
kitchen and living scenarios.

T / +86 130 3610 2610 (商务洽谈)
zjsj.haier.net/#/zjsj/zjsjHome



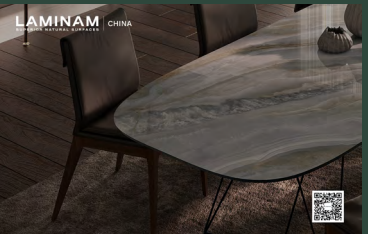
LAMINAM 莱梅娜
LAMINAM

2-108

意大利原创陶瓷岩板制造商，可打造
1000X3000 ~ 1620x3240 mm 陶瓷岩
板，400种花色可供选择。我们的宗旨是创造卓
越的天然饰面，激发设计师和建筑师灵感，打
造理想的居住及建筑装饰空间。

Italian original ceramic surfaces
manufacturer, can create 1000 x 3000 ~
1620 x 3240 mm ceramic surfaces, 400
kinds of color to choose from. Our aim is to
create outstanding natural finishes that inspire
designers and architects to create ideal living
and architectural spaces.

T / +86 186 2175 9186 (商务洽谈)
E / p.li@laminam.com
www.laminam.com



ODB

2-114

ODB安达建筑装饰材料有限公司旗下高端设计师
品牌，专注于建筑声学行业的产品创新、材料创
新和声学技术服务创新。基于21年行业经验，从
新定义声学产品。

The ODB brand was founded in 2022 and
is a high-end designer brand under Beijing
Huaxin Anda Building Decoration Materials
Co., Ltd. It focuses on product innovation,
material innovation, and acoustic technology
service innovation in the architectural
acoustics industry. Based on 21 years of
industry experience, redefine acoustic
products.

T / +86 186 0114 3851 (商务洽谈)
E / bjhxad_jw@163.com
www.bjhxad.com



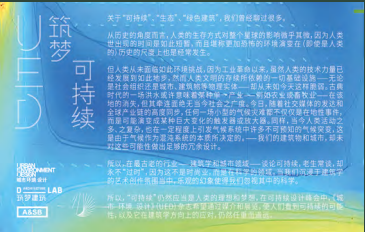
M-SEEN 材见
M-SEEN

2-10

材见M-SEEN是国内一家建筑领域低碳&可持续
材料方案解决公司。

M-SEEN is a domestic company in the field
of architecture that specializes in providing
comprehensive low-carbon and sustainable
material solutions.

T / +86 186 6794 1990 (商务洽谈)
E / rico@m-seen.com
www.m-seen.com



UED

2-28 & 2-118

UED是中国建筑设计行业专业、时尚的全媒体平
台；报道人物、作品、思想。探寻建筑、城市、
景观作品，聚焦当下全球设计实践现场。包含期
刊、新媒体、学术活动、策划等服务。

UED explores renowned global architecture,
cities, and landscape design works through
trenchant perspectives, highlights sites of
contemporary global design practices,
discovers talented architects and designers
both in China and the world, as well as
focuses on the built environment changes in
cities and countrysides. The magazine is a
comprehensive media platform that integrates
publication, new media, academic activities
and branding consulting services.

T / +86 135 2197 2507 (商务洽谈)
E / uedmedia@foxmail.com
www.uedmagazine.net



RePlasTerial 塑愈
RePlasTerial

2-34

塑愈，作为新一代绿色建筑材料不仅使用100%
消费后的废塑料为原材料，而且100%可回收循
环再造5次以上。每平方米再生材料还可减少约
20kg的CO2和19kg的废弃塑料。

RePlasTerial, Carbon neural panel, is made
from 100% PCR plastic waste which achieved
food degree. It's produced by 100% green
energy, and can be recycled 5times after
usage.

T / +86 151 5752 1781 (商务洽谈)
E / sissi.chao@remakehub.co
www.remakehub.co

COLORBO 彩滨
COLORBO

2-76

COLORBO彩滨以打造舒适声学为主要设计概念，选
用可回收的环保材料做最美的装饰，达到最佳的吸音
和装饰效果，同时满足环保、防火、Greenguard和
Leed 建筑标准。我们致力于各类声学材料的研发、
生产与销售，并提供整体声学解决方案。

ColorBo takes acoustics as the main design
element, by selectingrecycle raw materials to gain
the best decoration and achieve the best sound
absorption effect with high class fire protection
grade. We are committed to the development,
production and soles of all kinds of acoustic
materials, providing total acoustic solutions and
one-stop procurement of acoustic materials.

T / +86 186 2175 7880 (商务洽谈)
E / sherry@colorbo.com
www.colorbo.com



Furniture design research
institute of Academy of art &
design Tsinghua University
清华大学美术学院家具设计研究所

2-74

清华大学美术学院，前身为1956年成立的中央
工艺美术学院。是新中国的第一所艺术设计高等
院校，秉持为人民衣食住行服务的宗旨，开创书
写了中国现代艺术设计教育史的重要篇章。

Tsinghua University's Fine Arts Academy,
formerly the Central Academy of Arts and
Crafts since 1956, pioneered art and design
education in post-revolution China, prioritizing
essential aspects of daily life, and contributing
significantly to modern Chinese art and
design history.

T / 010 62798056
E / yulizhan@mail.tsinghua.edu.cn
www.ad.tsinghua.edu.cn



Near & Distant 身旁及远方
Near & Distant

2-22

在全新的技术手段和社会环境影响下，设计的语
境正发生着深刻的变化。设计师们比以往拥有了
更多的可能性，去面向更广阔的人群，更宏大的
课题，更隐蔽的矛盾，以及更遥远的未来
这使得设计的意义极大地拓展，使“身旁”和“
远方”都与我们息息相关。身旁及远方-2023可
持续设计展，一众年轻设计师以他们极具创意，
充满爱及可能性的作品，落地北京展览馆，可持
续设计峰会展览现场，为中国可持续设计的年轻
力量提供一个展现的舞台。

Under the influence of new technological
means and social environment, the context of
design is undergoing profound changes.
Designers have more possibilities than ever
before to face a broader audience, a larger
topic, more hidden conflicts, and a more
distant future.

This greatly expands the meaning of design,
making both "near" and "distant" closely
related to us.
“near & distant” 2023 Sustainable
Design Exhibition provides a stage for
young designers to show their creative
and innovative works, which landed at
the Sustainable Design Summit exhibition,
offering a platform for young forces of
sustainable design in china

T / +86 186 1129 5015 (商务洽谈)
E / dj0210@yeah.net

观众亮点

VISITOR HIGHLIGHTS

建筑和室内设计

伍兹贝格建筑设计有限公司
B.L.U.E.建筑设计事务所
北京集美组装饰工程有限公司
大象建筑设计有限公司
扎哈·哈迪德建筑事务所
赫斯科建筑设计咨询有限公司
矩阵纵横设计股份有限公司
梁志天生活艺术（深圳）有限公司
北京分公司
让努维尔(上海)建筑设计咨询有限公司
李玮珉建筑师事务所
钛马赫别墅设计事务所
于舍(北京)陈设艺术设计有限公司
杨邦胜设计北京公司
麦驰空间设计
北京万景百年室内设计有限公司
东易日盛
博洛尼旗舰装饰装修工程北京有限公司
北京靳朝晖室内装饰设计有限公司
海茵建筑设计咨询（北京）有限公司
意地筑作室内建筑设计事务所
北京清石建筑设计咨询有限公司
刘道华建筑设计有限公司
穆氏建筑设计（上海）有限公司
英国凯达建筑事务所
北京清尚建筑设计研究院有限公司
香港汇创国际建筑设计有限公司
深圳市郑中设计股份有限公司
一墨一空间建筑设计事务所
艺烁国际空间设计（北京）有限公司
巴马丹拿建筑设计咨询（上海）有限公司
Hirsch Bedner Associates(HBA)
北京好释艺术设计有限公司
北京墨臣建筑设计事务所
北京尚层生泰技术有限公司
北京无束空间创意设计有限公司

房地产

融创集团
恒隆地产
瑞安新天地有限公司
中瑞鼎峰
仲量联行
戴德梁行
第一太平戴维斯物业顾问(北京)有限公司
正大商业房地产
上海浦东嘉里城房地产有限公司
SOHO中国
华润置地
华侨城北方投资有限公司
世纪金源酒店集团
北京睿意德商业股份有限公司

酒店

希尔顿酒店集团
洲际酒店集团
温德姆酒店集团
太古酒店集团
华住酒店管理有限公司
上海亚朵商业管理(集团)有限公司
钓鱼台美高梅酒店集团有限公司
笙美酒店集团
雲頌酒店

建筑院

IWBI, WELL FACULTY
中国建筑科学研究院
北京土木建筑学会
中国建筑上海设计研究院有限公司北方分公司
北京建筑设计研究院
清华大学建筑设计研究院
同济大学建筑设计院

北京市市政工程设计研究总院有限公司
北京鸟巢文化传媒有限公司
北京设计之都发展有限公司

品牌

内蒙古蒙牛乳业（集团）股份有限公司
内蒙古伊利实业集团股份有限公司
华为技术有限公司
宜家家居
迪卡侬集团
无印良品（上海）商业有限公司
北京环球影城
舍弗勒集团
伊莱克斯（中国）电器有限公司
日立（中国）有限公司北京分公司
北汽福田汽车股份有限公司
吉利汽车集团
领克汽车
隆丰革乐美有限公司
雷士照明控股有限公司
Muurla
Sandudd
Finngardens
Tsobu

ARCHITECTURE & INTERIOR DESIGN

Woods Bagot
B.L.U.E. Architecture Studio
Newsdays Architectural Design Co.,LTD
GOA
Zaha Hadid Architects
Haskoll
Matrix
Steve Leung Architects Ltd. (SLA)
Ateliers Jean Nouvel
LWM Architects
Tellmach
YU Studio
YANG HD
Match Design
Interscape
Dong Yi Ri Sheng
Boloni
Cindy Jin DESIGN
HENN
IDEE INTERIOR DESIGN CO.LTD
QUCESS DESIGN FIRM
LDH DESIGN
M Moser Associates
Aedas
BEIJING TSINGSHANG ARCHITECTURAL DESIGN AND RESEARCH INSTITUTE
ATELIER GLOBAL
Cheng Chung Design
INMORE DESIGN
Ease art space
Palmer and Turner
Hirsch Bedner Associates(HBA)
Beijing Haoshi Art Design Co., Ltd
Beijing Mochen Architectural Design Firm
Voglass M&E
Beijing Unbound Space Creative Design Co., Ltd

REAL ESTATE

Sunac China
Hang Lung Properties
Shui OnXintiandi Limited
White Peak
JLL
DTZ
Savills
CP Group
Kerry Parkside
SOHO
CR Land
Overseas Chinese Town Holdings Company
Golden Resources
RET

HOTEL

Hilton
IHG
Wyndham Hotels and Resorts
Swire Hotels
H World Group Limited
ATOUR
Diaoyutai MGM Hospitality
Canbeauty
Eoso Yunsong Hote

ARCHITECTURAL INSTITUTE

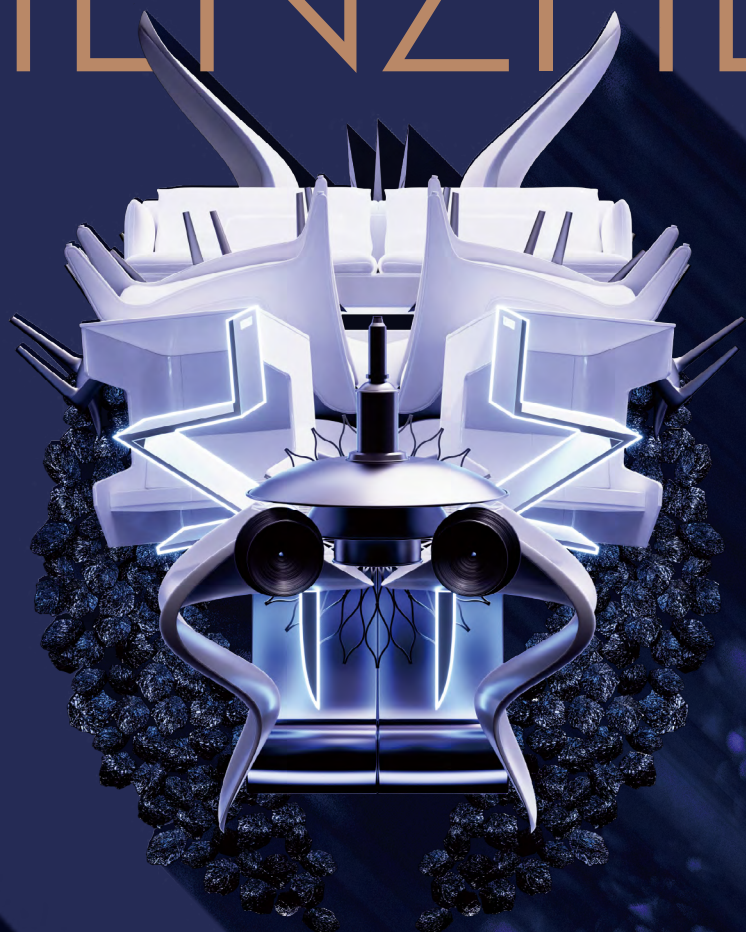
IWBI, WELL FACULTY
CABR; China Academy of Building Research
Beijing Society of Civil Engineering and Architecture
China Shanghai Architectural Design & Research Institute Co., Ltd.
Beijing Institute of Architectural Design
Architectural Design & Research Institute of Tsinghua University
Tongji Architectural Design (Group) Co.,Ltd.
Beijing General Municipal Engineering Design & Research Institute Co., Ltd.

Bird's Nest Culture Media
Beijing "City of Design"

BRANDS

MENGNIU
YILI
HuaWei Technologies Co., Ltd.
IKEA
DECATHLON
MUJI
Universal
SCHAEFFLER
Electrolux
Hitachi
FOTON
Geely
Lynk & Co
Colomer Munmany
NVC GROUP
Muurla
Sandudd
Finngardens
Tsobu

DESIGN SHENZHEN



MARCH
2024

SHENZHEN CONVENTION
& EXHIBITION CENTER

WWW.DESIGNSHANGHAI.COM

THE FUSION OF DESIGN
AND TECHNOLOGY

design
SHENZHEN
设计深圳

“设计深圳” DESIGN SHENZHEN

2024年3月
深圳会展中心

March 2024
Shenzhen Convention
& Exhibition Center

首届“设计深圳”于2023年2月在深圳成功举办，这一盛事令整个大湾区为之振奋。展望2024年，我们将继续借鉴“设计上海”过去十年的成功经验和丰富资源，打造一个升级版的设计盛会，突显独特风采和浓郁的大湾区特色。

紧随上海的成功，我们有望在大湾区孕育出另一个全球设计中心。届时，我们将集中展示卓越的设计精品，包括国内外领先设计品牌的作品、充满科技感和创意精神的杰作，以及备受推崇的设计论坛。此外，届时还将举办多种多样的国内外设计活动，推动“设计遍布全城”的理念在大湾区蔚然成风。让我们一同领略“设计深圳”所呈现的无尽魅力，感受设计的力量，并共同书写创新的篇章。

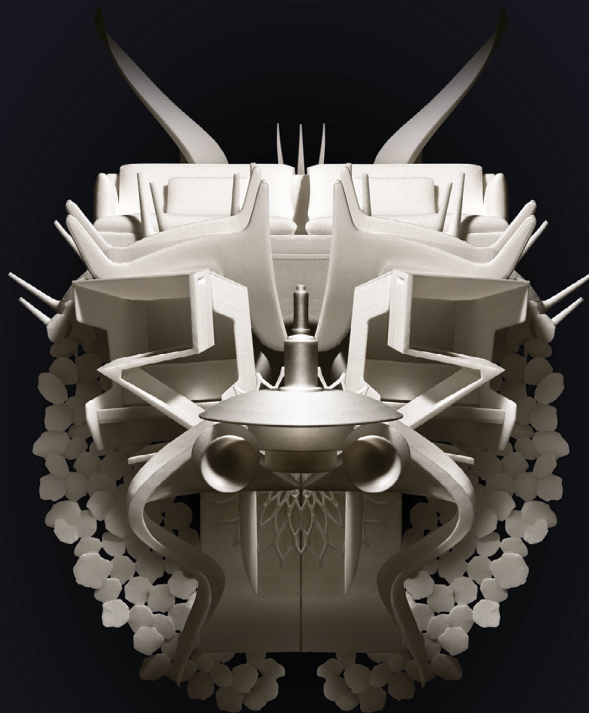
The inaugural Design Shenzhen was successfully held in Shenzhen in February 2023, receiving an enthusiastic response from the entire Greater Bay Area. Looking ahead to 2024, we will continue to draw upon the successful experience and abundant resources of the ten-year journey of Design Shanghai, to create an upgraded and uniquely distinctive design extravaganza, exuding the rich characteristics of the Greater Bay Area.

Following the triumph in Shanghai, we are about to establish another global design hub within the Greater Bay Area. At that time, we will showcase an extraordinary design feast, featuring exquisite designs from leading domestic and international brands, the most technologically advanced and creatively inspiring design works, and renowned design forums. Additionally, a plethora of diverse design activities will be held, spreading the concept of “design across the city” throughout the Greater Bay Area. Let us revel in the boundless charm presented by Design Shenzhen, feel the power of design, and together, create a magnificent chapter of innovation.



关注微信公众号，获取最新行业资讯！
FOLLOW US ON WECHAT
GET THE LATEST UPDATES AND NEWS！

ASIA'S LEADING
INTERNATIONAL
DESIGN EVENT
亚洲领先的国际设计盛会



2024年6月19-22日
上海世博展览馆

19-22 June 2024
Shanghai World Expo
Exhibition & Convention Centre

www.designshanghai.com

design
SHANGHAI

设计上海

“设计上海”
DESIGN SHANGHAI

2024年6月19-22日
上海世博展览馆

19-22 June 2024
Shanghai World Expo Exhibition
and Convention Center

「设计上海」延续其作为亚洲领先设计盛会的庞大规模与巨大商业价值实力。展会自2014年创办以来，已向全球观众展示了来自国内外领先品牌的前沿设计作品。「设计上海」致力于通过遍布「家具与灯具设计」、「厨卫设计」、「生活方式与配饰设计」、「新材料与应用」展馆的精美设计探索东西方设计理念之间的融合与平衡。此外，展会还包括特别策划内容、极具启发性的设计论坛与激动人心的社交活动，并致力于通过“新天地设计节”等一系列城市创意活动，推动富有创建的对话与思想交流。

Design Shanghai remains the largest and most commercially successful fair. Since 2014, it has presented work from leading international and Chinese brands to a global audience. Design Shanghai aims to explore how eastern and western design philosophies can work together synergistically across vibrant Halls: Furniture & Lighting, Kitchen & Bathroom; New Materials & Applications; Living & Lifestyle. The event also features bespoke installations, inspirational designforum programmes, design festivals and exciting networking events.



关注微信公众号，获取最新行业资讯！
FOLLOW US ON WECHAT
GET THE LATEST UPDATES AND NEWS！

减排目标怎么定？减排方案怎么搞？？？

碳排放源有哪些？

最适合的绿电上哪找？

原材料—生产—包装—分销—回收，这么多碳足迹数据怎么收集？

认证机构找谁才可靠？

那么多用能设备，怎样高效管理又降低能耗？

上下游各种供应链，怎么知道哪家最低碳？

实在减不掉的碳足迹，该怎么抵消？

碳信用会买到假货吗？

实现零碳这么难？

北京展览馆 2-102 展位

我们有方案

零碳不难

ZERO CARBON
ZERO WORRIES

创冷科技无电制冷技术开创者

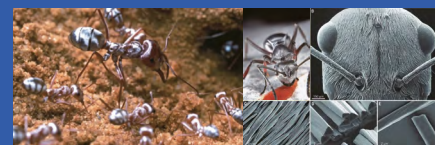
创冷科技 (i2Cool) 是一家由香港城市大学HK Tech 300项目孵化的科技初创公司，团队成功研发领先全球的零耗能、无需制冷剂的被动式辐射制冷涂料已落地应用。

无电制冷涂层是创冷科技首个商业化的产品，于2021年11月正式推出市场。该涂料是以外太空为制冷源头，通过高效的太阳反射和中红外热辐射实现低于环境温度的制冷效果。

无电制冷技术 Passive Radiative Cooling Technology

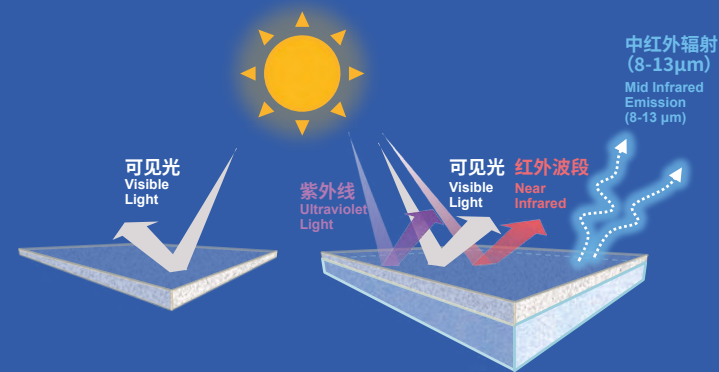
大自然的启发：
撒哈拉沙漠银蚁表面特殊的毛髮结构可以使它们的皮肤自行冷却，继而适合在酷热的环境中生存。

Inspiration from the Nature:
Inspired by the skin structure of Saharan silver ants with a self-cooling function that allows them to survive in an extremely hot environment.



技术原理：
地球大气成分对红外辐射是透明的，因此涂层往外辐射的热量可以毫无阻挡地穿透大气层，被寒冷的外太空所吸收。只要把涂层覆盖在屋顶或外墙，无需能源或制冷剂便可达到无电制冷的冷却效果。

Since the Earth's atmosphere is transparent to mid-infrared radiation, the heat emitted by the cooler can pass through the atmosphere and be absorbed by the cold outer space. By covering the roof or exterior walls with the cooling product, the effect of "electricity-free cooling" can be achieved without energy input or refrigerant.



市面上的降温油漆或白色环保油漆（仅反射可见光）
Commercially available cooling paint or white paint (reflects visible light only)

VS

无电制冷涂层能反射绝大多数太阳光（反射率大于95%），同时有效地将热量以中红外方式往外辐射（辐射率大于95%）
Electricity-free cooling paint with over 95% solar reflectivity and over 95% mid-infrared emissivity



无电制冷涂层检测标准及数据参考

目的	检测依据	结果
太阳光反射率(250-2500 nm)	GB/T 26880-2021 ASTM E1980-11(2019)	95.06%
中红外辐射率(8-13 μm)	GB/T 30127-2013	95.2%
光泽度	ISO 2813:2014	83
太阳反射指数SRI	ASTM E1980-11(2019)	120
拉脱附着力测试	ASTM D4541-17	7 MPa
抗冲击性测试	ISO 2813:2014	60 kg·cm
挥发性有机物含量	GB/T 23986 2009	12 g/L



销售经理
SALES MANAGER



官方网站
WEBSITE

ARITCO HOME LIFT[®]

Since 1995

瑞特科家用电梯

www.aritco.com.cn

400 6233 121



格兰富
GRUNDFOS

格兰富商业建筑绿色高效解决方案

空调水循环泵



智能控制系统



智能泵组系统



在线监测系统



热回收与热水循环系统



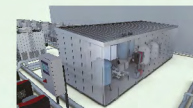
分布式泵送

空调末端循环
采暖三次泵
供水末端增压



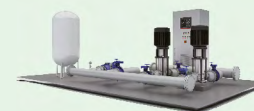
空调循环泵组

预制水力模块



补水系统

定压补水机组



给排水系统



KOHLER®

Believing in Better.®

许以更好的未来

