

Tour Length 14 Days / 13 Nights	Travelers 2 Adults	Start Tour -	End Tour -
---	------------------------------	-----------------	---------------

Uganda Gorillas and Wildlife Safari - 14 Days

Dear Friend,

We are happy to send you this custom-made quote for our Uganda Gorillas and Wildlife Safari - 14 Days.

We have taken great care in creating this tour that runs over 14 days and 13 nights for 2 Adults .

The tour starts on (to be confirmed) in Kampala and ends on (to be confirmed) at Entebbe International Airport .

Feel free to reach out if you have any questions. We will gladly answer them to make sure that you have the safari of a lifetime with us!

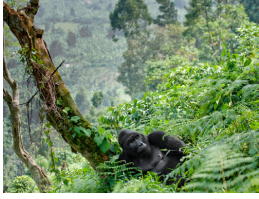
Best regards,



Ivan Wassaaka
Gorillas and Wildlife Safaris

Phone +256 772 979 425

Email info@gorillasandwildlifesafaris.com



Uganda Experiential Wildlife Safari - 14 Days

Day by Day

Start Destination: Kampala

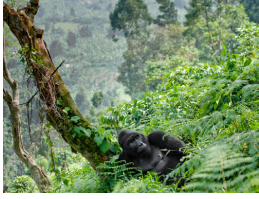
See your full itinerary on **Page 6-25**

Days	Main Destination	Accommodation	Meal Plan
● Day 1	Ziwa Rhino and Wildlife Ranch	Amuka Safari Lodge Lodge	Lunch & Dinner
● Day 2-3	Kidepo Valley National Park	Kidepo Savannah Lodge (Safari Tent) Tented camp	Breakfast, Lunch & Dinner
● Day 4-5	Murchison Falls National Park	Pakuba Safari Lodge Lodge	Breakfast, Lunch & Dinner
● Day 6-7	Kibale National Park	Isunga Lodge Lodge	Breakfast, Lunch & Dinner
● Day 8-9	Queen Elizabeth National Park	Buffalo Safari Lodge Lodge	Breakfast, Lunch & Dinner
● Day 10-11	Bwindi Impenetrable National Park	Ichumbi Gorilla Lodge Lodge	Breakfast, Lunch & Dinner
● Day 12	Lake Bunyonyi	BirdNest Resort Resort	Breakfast, Lunch & Dinner
● Day 13	Lake Mburo National Park	Rwakobo Rock Lodge Lodge	Breakfast, Lunch & Dinner
● Day 14	Entebbe International Airport	No accommodation	Breakfast & Lunch

End Destination: Entebbe International Airport

Optional: We can arrange additional accommodation before and after the tour.

✈ Departure: Entebbe International Airport, Airport transfer included



Uganda Experiential Wildlife Safari - 14 Days

Highlights

- ☆ Bwindi Impenetrable National Park
- ☆ Queen Elizabeth National Park
- ☆ Ishasha Sector
- ☆ Kidepo Valley National Park
- ☆ Murchison Falls National Park
- ☆ Maramagambo Forest
- ☆ Mountain gorilla trekking in Bwindi
- ☆ Golden Monkey Tracking

Our vehicles



Enhanced and safe game



Land Cruiser



Safari Land-cruiser



Safari land-cruiser customized

Tour Length 14 Days / 13 Nights	Travelers 2 Adults
---	------------------------------

<p>⊕ Included</p> <p>All accommodations, All activities, unless indicated as optional, All transportation (Unless labeled as optional), Park fees, Taxes / VAT, Meals (As specified in the day-by-day section), Services of a professional English-speaking safari guide, Bottled drinking water on the vehicle, Chimps tracking permit, Boat trips, All transport by road, Uganda gorilla permit (\$800 per person)</p>	<p>⊖ Excluded</p> <p>Additional accommodation before and at the end of the tour, International flights, Government imposed increase of taxes and/or park fees, Tips (Tipping guideline US\$10.00 pp per day), Personal items (Souvenirs, travel insurance, visa fees, etc.), Visas</p>
---	---

Breakdown of Costs

2x Adult	£3,276.00	£6,552.00
	Total in GBP	£6,552.00

Payment Terms

An initial deposit of Deposit for the gorilla permits £860 per person to confirm the tour, the rest can be settled anytime before starting the tour.

[Confirm Booking](#)

Attached Terms & Conditions

<https://www.gorillasandwildlifesafaris.com/about/terms-conditions/>

Meet and Greet in Entebbe, Mabamba Swamp, Drive to Ziwa Rhino Sanctuary

Your Ugandan safari starts here and now. With all of the incredible wildlife that this country has to offer, we know that you're keen to get started. And as soon as we introduce you to your guide and answer your questions, we'll get you out there exploring.

Birding, Mabamba Swamp

Accompanied by a local guide and boatsman, we take a dugout into Mabamba Swamp, on the northern verge of Lake Victoria. This is a rewarding birding destination, with 300-plus species recorded, from bulky pelicans and herons to colorful bee-eaters and kingfishers. It's also a good place to look for papyrus specialists, including the shoebill.

Mabamba Swamp

We explore Mabamba Swamp, a popular bird-watching site that frequently provides close up sightings of the bizarre shoebill.

Ziwa Rhino Sanctuary

Along the way, we have our first Uganda wildlife experience. This will be with the white rhinos at Ziwa Rhino Sanctuary. Ziwa Rhino sanctuary is the only place to trek wild Rhinos in Uganda, the other Rhinos are found at Uganda wildlife education center (former Zoo) in Entebbe.



Accommodation | Day 1

Amuka Safari Lodge

Lodge

When you stay at Amuka Safari Lodge, you're in a good location to enjoy this leg of your trip.



Activity Day 1

- Early this morning you join a guided boat excursion into **Mabamba Swamp**, a superb birding site known as one of the top places in Africa to see the magnificent shoebill. Most of the birding here is done canoeing as we look out for the rare Shoebill Stork, African Water rail, Allen's and Purple Gallinule (swamphen) Squacco, Goliath, Purple, Grey Herons, a variety of Egrets, ducks. There are also chances of encountering the elusive sitatunga antelope adapted to swampy habitats.
- Transfer by Road, **Kampala to Ziwa Rhino and Wildlife Ranch**
- You will join us for one of our favorite activities when we go rhino tracking. On arrival at the sanctuary, you will be given a briefing from your ranger guide on how to behave while on this Rhino trek. It is very critical that you heed to the ranger's instructions while on the trek because Rhinos can be aggressive if they sense a need to defend themselves. Depending on the location of the Rhinos, you may need to drive closer to their location before you start the trek to reduce the distance. Your ranger guide will share different information on the behavior of Rhinos and how you ought to behave while as you trek. Once you locate the Rhinos, you can stay a maximum of one hour in their presence. Sometimes different families are within a distance of each other, in which case you will get an opportunity to visit more than one group.

Meal Plan – Day 1

- Lunch & Dinner





Mabamba Swamp



White rhinoceros with young



Ziwa Rhino Sanctuary

Kidepo Valley National Park

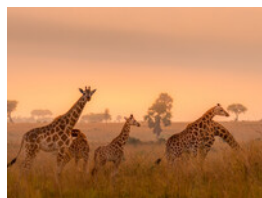
One of Africa's most wild and remote safari destinations, Kidepo Valley National Park lies in the far northeast of Uganda bordering South Sudan. Its wildlife-viewing centerpiece is the grassy Narus Valley, which is famous for supporting thousand-strong herds of buffalo, large numbers of elephant, lion, patas monkey and Rothschild's giraffe, and a wide variety of antelope and nocturnal carnivores.

Kidepo's elephant population has surged from around 200 in the mid 1990's to between 650 and 1000 today. The African Buffalo population is now estimated at 10,000-15,000. The Rothschild Giraffe is very notable ,breeding more than 50 individuals from the bottleneck of the mid 1990's population of three and supplemented several from translocation.

The bird checklist of over 476 species with the common Ostrich, secretary bird,northern carmine bee eater, little green bee eater, Abyssinian scimitar bill and many more colorful and visible species.



Kidepo Valley National Park



Activity Day 2

- Transfer by Road, **Ziwa Rhino and Wildlife Ranch to Kidepo Valley National Park**
- This afternoon, time allowing, we can do a game drive in Kidepo Valley National Park. Or instead of visiting the Karimajong on the next day, we can visit them this afternoon. The Karamojong tribe is well known as the nomadic pastoralists who still live in unique houses called manyatas that are temporally designed to stay in as they move from place to place while taking care of their cattle.

Activity Day 3

- You'll learn everything you need to know about the wildlife you're seeing during the guided game drive in **Kidepo Valley National Park**.

Meal Plan – Day 2 & 3

- Breakfast, Lunch & Dinner



Kidepo Valley National Park



Accommodation | Day 2 & 3

Kidepo Savannah Lodge (Safari Tent)

Tented camp | Bordering Kidepo Valley National Park without fences

Sprawling across a hillside on the western boundary of Kidepo Valley National Park, Kidepo Savannah Lodge is an old-school tented camp that offers wonderful views over the Narus Valley. The safari tents here are simple but well furnished, and the lodge is ideally located for game drives along the park's most productive wildlife viewing circuit.

Cottage exterior



Kidepo Savannah Lodge (Safari Tent)



Tent interior



Kidepo Valley National Park



Zebra and waterbuck in Kidepo





Murchison Falls on the Victoria Nile

Murchison Falls National Park

Described as the most exciting thing to happen to the Nile along its 6,000km journey from Lake Victoria to the Mediterranean, the 43m-high Murchison Falls is also the centerpiece of Uganda's largest and oldest national park. Here you might encounter four of the Big Five (lion, leopard, elephant and buffalo), along with the world's largest population of the endangered Rothschild's giraffe, and several types of antelope and monkey. Particularly noteworthy among 550-odd recorded bird species are the hulking great shoebill and Abyssinian ground hornbill, and the beautifully marked and very localized white-crested turaco and red-headed lovebird.

Activity Day 4

Rest of Day

→ Transfer by Road, **Kidepo Valley National Park** via **Top of Murchison Falls** to **Murchison Falls National Park**





Accommodation | Day 4 & 5

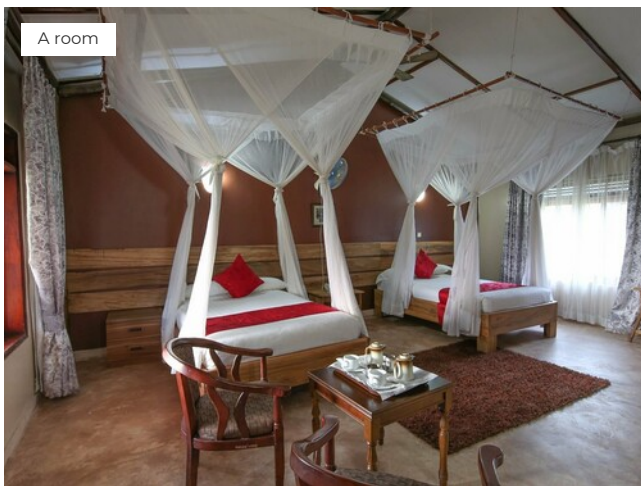
Pakuba Safari Lodge

Lodge | Inside Murchison Falls National Park

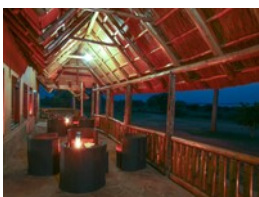
We will stay at Pakuba Safari Lodge, where you can enjoy views over a lushly vegetated stretch of the Albert Nile from the swimming pool and balcony. It's easy to see why this was chosen as the site of one of Murchison Falls' first two lodges back in the 1960s, especially as it provides easy access to the national park's most reliably productive game-drive circuit.



Pakuba Safari Lodge



A room

**Activity Day 5**→ **Guided Game Drive - Murchison Falls National Park**

In Murchison Falls National Park, your early morning game drive gets you close to the wildlife when they're most active, and the landscapes are at their most beautiful.

Seriously consider enduring an early morning start this morning to increase your chances of sighting the big cats in Murchison Falls National Park. The usual setting is for guests to depart from the lodge not later than 6:30 AM and then launch into the wilderness before the heat of the day. There is just so much to see in Murchison Falls National Park - hyenas, leopard, lions, giraffes, herds of elephants, buffaloes and many more. We allow for whole morning to be spent on covering most of the lucrative trucks in the park, combing out every thicket we expect to have wildlife in it. Enjoy and have all the fun!

→ **Boat Trip - Murchison Falls National Park**

We will then go for an afternoon boat cruise to the foot of Murchison Falls. This boat trip along the Nile is often cited as being the highlight of a trip to Murchison since it allows you to get up-close and personal with the animals. Along this stretch of the river, there are reported to be around 4,000 hippos in addition to some enormous Nile crocodiles. The birdlife is stunning with brightly colored kingfishers and bee-eaters darting along the riverbanks. If lucky, you may see the rare and prehistoric-looking shoebill, which is a cross between the dodo and a dinosaur. The boat takes you to the base of the falls which only adds to their impressiveness

 **Meal Plan - Day 4 & 5**

→ Breakfast, Lunch & Dinner



Leopard in a tree



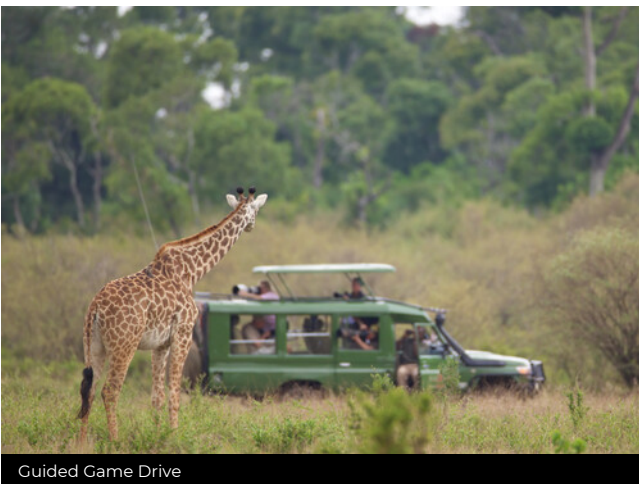
Murchison Falls National Park



Murchison Falls National Park



Murchison Falls National Park



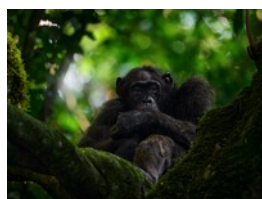
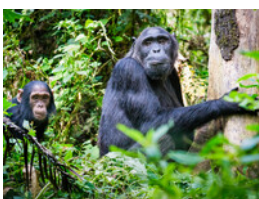
Guided Game Drive



Hippos

Kibale National Park

Set on fertile volcanic soils studded with beautiful crater lakes, Kibale National Park protects a 766km² tract of mid-altitude rainforest extending northwards from Queen Elizabeth National Park. Here, you can look forward to seeing a wide variety of monkeys, birds and butterflies, but the star attraction is a 1,000-strong population of chimpanzees, and their hysterical pant-hoot vocalizations, which carry deep into the forest interior.



Activity Day 6

→ Leave Murchison Falls National Park for Kibale Forest National Park via the Lake Albert escarpment, having a good view of the lake. Stopover at Kolping Hotel in Hoima for lunch and after a drive across the interesting river Nkusi (flowing from the southern end of Lake Albert, through the villages of Kagadi, joining Victoria Nile). Both rivers join Lake Kyoga and flow through Murchison Falls continue to Lake Albert and north to the Mediterranean Sea.

Traveling on both asphalt and unpaved roads, you pass through traditional Ugandan villages where you see people at work tending their traditional crops of millet, sorghum, beans, and maize. The lush rolling hills of this region provide good photo opportunities.

As you approach Fort Portal in the foothills of the Rwenzori Mountains, you enter Uganda's famous tea plantation region. A carpet of green spreads before you, as far as the eye can see, and seems an unusual contrast to the countryside through which you have just passed.

You arrive at Fort Portal, then, continue toward Kibale Forest, one of the great African rainforest research reserves. Years of study by scientists (who have cut a grid through the forest) have habituated many of its animals to human observers. This forest is famed for the variety of primates found here and it is a terrific area for birds. This rural Ugandan town is locally famous for its weaving and basketry, and we can spend some time briefly examining some of this local art.

→ We shall the be going to Bigodi Swamp for a guided primates walk accompanied by a traditional village tribes' experience. Bigodi swamp is great for its many monkey species and birds. You will expect birds like the great Blue turaco, blue monkeys, baboons, otters, mongoose, bushbucks, bush pigs, and among others. At the tail end of the walk, the local guides lead you in the local community where you can participate in local alcohol brewing, coffee roasting, farming, basket weaving, among other activities.

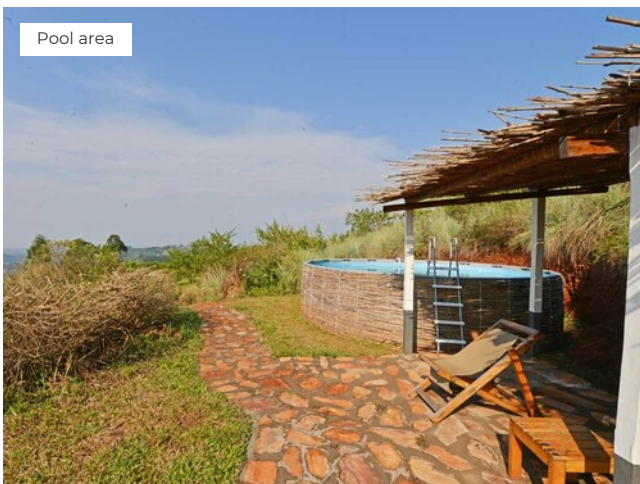
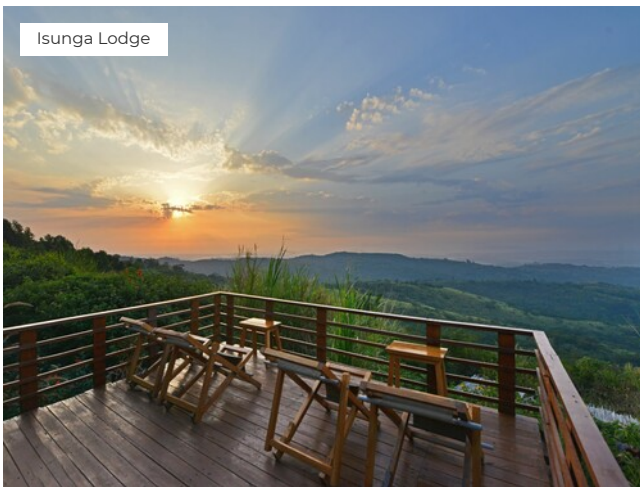


Accommodation | Day 6 & 7

Isunga Lodge

Lodge | Just outside Kibale National Park

You're going to be staying with us at Isunga Lodge. The Isunga Lodge is a beautiful property with a main dining and relaxation area and individual cabins, each with an impressive amount of privacy. Offering free WiFi and a sun terrace, Isunga Lodge is situated in Kibale Forest National Park. Kibale Forest is only about 600 m away.

**Activity Day 7**

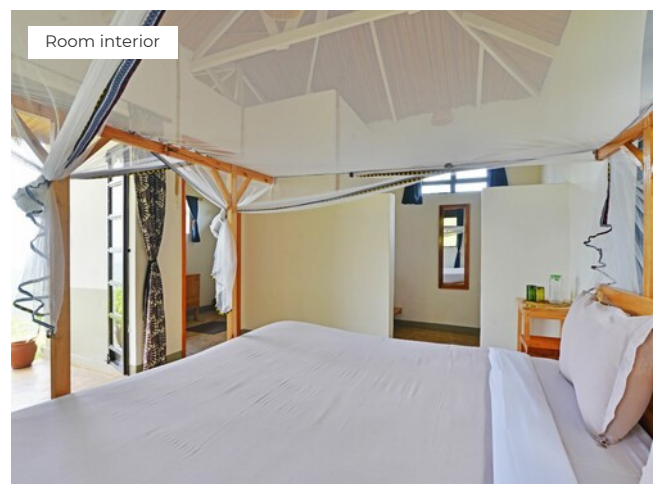
→ The starting place for the chimp's trek is the park headquarters, at Kanyankyu River camp from where most of the park's tourist activities commence.

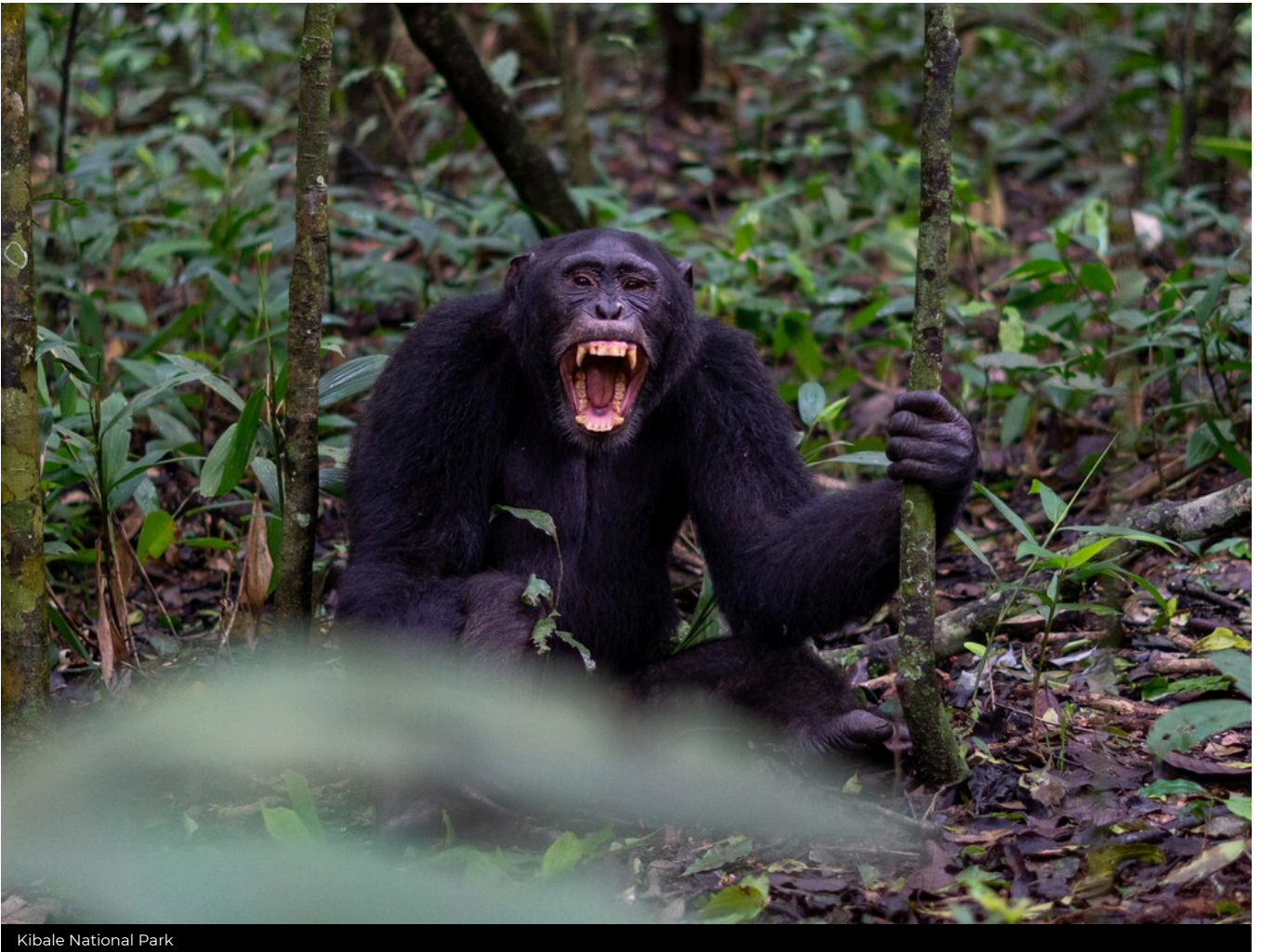
At the Kibale Park office, you will be asked for your passport for registration and then briefed about the chimpanzee tracking. The trek is mostly mild trekking through the jungles of Kibale, guided by the park rangers. You will be able to locate the chimps by listening to their pant-hooting calls, then hustle to the area from which they are calling. You should be able to observe them as they feed in fruiting trees, lounge, and socialize with each other, or even, occasionally hunt. You will be allowed one hour in the presence of the chimpanzees, and then after led back to the park office where your tour driver is awaiting.

On the way back, we often meet other primates inhabiting this forest. There are at least 12 primate's species in Kibale, and these include the black and white colobus monkeys, L'Hoest monkeys, grey-cheeked mangabey, red-tailed monkeys, bush babies, and pottos.

 **Meal Plan – Day 6 & 7**

→ Breakfast, Lunch & Dinner





Kibale National Park



Queen Elizabeth National Park

Queen Elizabeth National Park

Explore Queen Elizabeth National Park, Uganda's best all-round safari destination. In addition to being home to four of the Big Five (lion, leopard, elephant and buffalo), this biodiverse park is studded with wetlands that support an astonishing 5,000 hippos along with large flocks of flamingos, pelicans and other aquatic birds. Weather permitting, the views to the glacial peaks of the Rwenzori, Africa's second-highest mountain (after Kilimanjaro), are also exceptional.

Fort Portal

Situated below the snowcapped Rwenzori Mountains, Fort Portal is an attractive small town that started life in the 19th century as the capital of the Toro Kingdom.

Activity Day 8

→ Today we shall be driving to Queen Elizabeth National Park. The game seen will depend on the season; the Kasenyi plains are good with lions, and the Mweya peninsula for a variety of other wild animals. Queen Elizabeth National Park is dominated on its northern border by the snow-capped 16,000-foot Rwenzori Mountains - the famed "Mountains of the Moon".

This 767-square-mile conservation area is bordered on the northeast by Lake George and on the southwest by Lake Edward; its western border adjoins the Congo Parc du Virunga. You will expect to see teeming herds of impala-like Uganda kobs, as well as topis, elephants and lions, giant forest hogs, and Cape buffalos. There are also several soda lakes filling ancient volcanic calderas where flamingos reside seasonally.



Accommodation | Day 8 & 9

Buffalo Safari Lodge

Lodge | Just outside Queen Elizabeth National Park

Buffalo Safari Lodge is located near the magical Kazinga channel, 1km off Kasese-Mbarara road. Queen Elizabeth Park, Uganda. The resort lies in 25 private acres of wilderness, a serene environment full of spectacular flora and fauna – elephant, buffalo, hippo, warthog, and many bird species, all at the glance of an eye.

Surrounded by lush greenery and soothing sounds of wildlife, our retreat offers an idyllic setting to escape the stresses of modern life, revitalize your spirit, and rediscover a sense of balance.

Activity Day 9

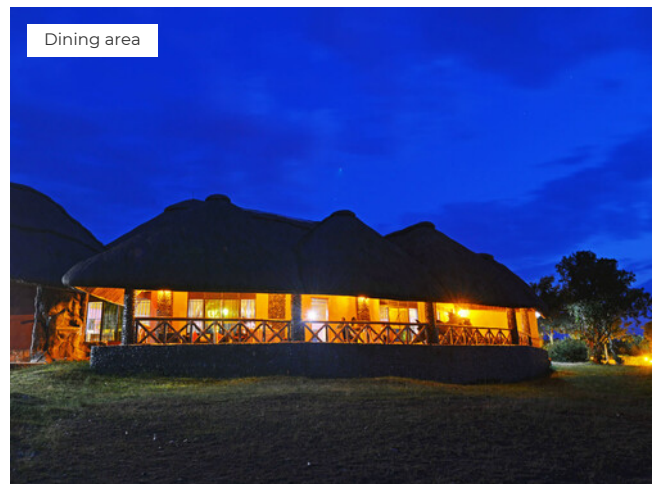
→ We set out early in the morning for a game drive in the northern part of the park on the Kasenyi Track in search of lions, elephants and solitary buffaloes. This is the best time for opportunities of viewing the cats in action owing to the vast population of Uganda kobs. We have an excellent chance to view just about every animal here at a very close range.

Meal Plan – Day 8 & 9

→ Breakfast, Lunch & Dinner



Buffalo Safari Lodge



Dining area



Bathroom



Lion cubs on the road after a rain storm



Queen Elizabeth National Park



Queen Elizabeth National Park



Queen Elizabeth National Park



Uganda Kob



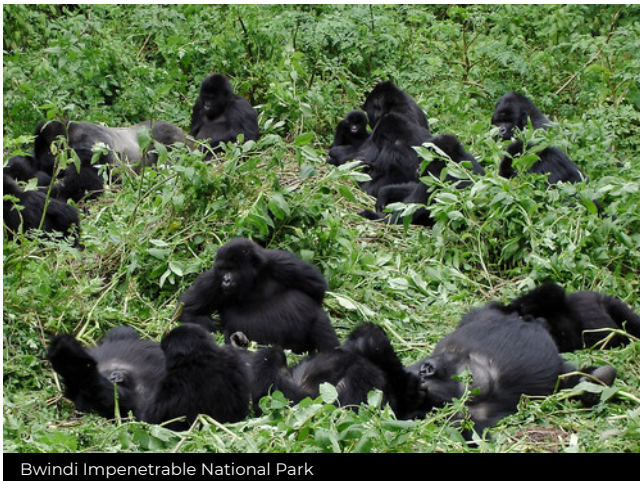
Queen Elizabeth National Park

Bwindi Impenetrable National Park

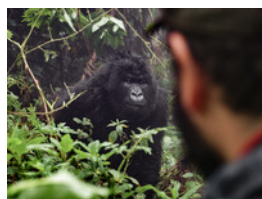
You don't need to stray far off the beaten path in Bwindi Impenetrable National Park to understand how Uganda's premier gorilla-tracking destination acquired its English name. The steep slopes and dense substrata of ferns and shrubs in this magnificent highland forest can make for challenging walking conditions. Fortunately, the park has a good network of footpaths allowing you to look for its diverse wildlife, not only mountain gorillas but also 10 other primate, six forest antelope, 350 bird and 200-plus butterfly species.



Bwindi Impenetrable National Park



Bwindi Impenetrable National Park



Activities Day 10

Morning

→ Keep an eye out for wildlife this morning as our transfer to the next part of your safari doubles as a game drive.

Afternoon

→ Transfer by Road, **Ishasha Sector** to **Bwindi Impenetrable National Park**

Activity Day 11

→ Mountain Gorilla Trekking, Bwindi Impenetrable National Park

The Big Day arrives! Enjoy a good breakfast to give you energy for the day ahead. A short transfer will take you to Park HQ where you will be allocated to your gorilla family, receive a briefing on the ecology of the animals, and meet your guides and porters (you can hire a porter for \$15). Then the trek begins. Expect to be walking for on average 3 hours in steep terrain before making contact with the gorillas. Then you have up to one hour to observe these amazing animals from a distance of 6 metres. When the magical hour is up, return through the forest to HQ and your lodge.

Meal Plan – Day 10 & 11

→ Breakfast, Lunch & Dinner



Accommodation | Day 10 & 11

Ichumbi Gorilla Lodge

Lodge | Just outside Bwindi Impenetrable National Park

We love the rooms at Ichumbi Gorilla Lodge for their airy ambience, earthy color schemes offset by bright African fabrics, and tall windows and wide balconies looking out across the rolling green hills of Bwindi Impenetrable National Park. This little lodge only lies 1km from the Rushaga gorilla-tracking trailhead, making it a most convenient base for activities in the national park.



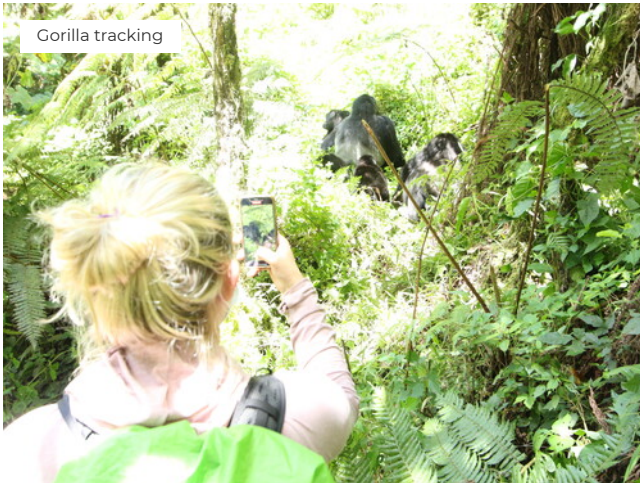
Ichumbi Gorilla Lodge



Bush breakfast



Reception area



Gorilla tracking



Gorilla tracking

Mgahinga Gorilla National Park; Golden Monkey Tracking, Mgahinga Gorilla National Park, Lake Bunyonyi

The Golden Monkey may not be the most well known primate, but is certainly an enjoyable, little creature that is worth visiting. It is a small curious monkey, golden in colour and loves to scamper around the trees. Golden monkeys are named after their golden-orange fur, and like mountain gorillas, are also considered endangered species. Conservation efforts have been put in place by the Uganda Wildlife Authority to ensure that the monkeys are protected – especially from poachers.

It is estimated that Mgahinga Gorilla National Park has between 3000-4000 golden monkeys grouped in troupes of 30s led by a principal adult male. Golden monkeys are primarily to be found in the bamboo forest that skirt the lower slopes of the volcanoes. They are quite more active in the bamboo canopy. Golden monkeys are opportunistic feeders. What they feed on could be by the availability of fruits, leaves of bamboo trees, shoots of bamboo, shrubs, flowers, invertebrates and these makes it to be restricted to highland forest, mostly the bamboo forest.



Accommodation | Day 12

BirdNest Resort
Resort

Whether you want to chill out at the waterside swimming pool, paddle a free canoe out onto the lake, or relax in a contemporary-styled room with a unique cave-like bathroom, BirdNest Resort is the most prestigious hotel on Bunyonyi. Its breezy terrace restaurant has one of the most imaginative menus in Uganda.



BirdNest Resort

Activities Day 12

Early Morning

→ Transfer by Road, **Ichumbi Gorilla Lodge** to **Mgahinga Gorilla National Park**

Morning

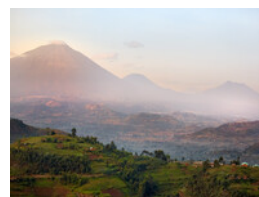
→ After an early breakfast set off for the national park for the Golden Monkey Tracking experience. Golden monkey tracking starts at **Mgahinga Gorilla National Park** headquarters at 7:30am for pre-tracking briefing (on the dos and don'ts of tracking the golden monkeys). The actual trek begins at 8:00am. Hiking through the forests to sight the golden monkeys is not so strenuous like gorilla trekking because golden monkeys live in lower areas, so tourists do not track for more than 3 hours. When tourists encounter the golden monkey family, they are given one hour to spend with them (to take photographs and observe their behavior).

Afternoon

→ Transfer by Road, **Mgahinga Gorilla National Park** via **Virunga Mountains** to **Lake Bunyonyi**. Kick back and relax on the shores of Lake Bunyonyi, hike on the steep hills that hem it in, or take a boat out to some of the 29 islands that protrude from its surface. Bunyonyi means 'Place of Small Birds', and the birdlife here is indeed plentiful. There's also no better place in Africa to see otters swim past as you enjoy a lakeside drink or meal.

Meal Plan – Day 12

→ Breakfast, Lunch & Dinner





Lake Bunyonyi



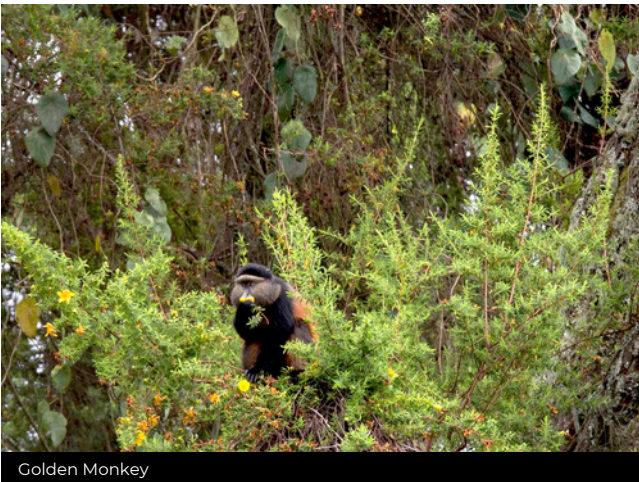
Dugout canoes



Golden Monkey Tracking



Golden Monkey feeding



Golden Monkey



Tourists hiking through bamboo forest, Mgahinga Gorilla National Park, Uganda



Canoe-trekking on Lake Bunyonyi, Transfer to Lake Mburo National Park

Although it isn't a classic Big Five destination (elephants and rhino are absent, and lion and leopard scarce), Lake Mburo National Park hosts a varied selection of African wildlife, including several iconic species not found elsewhere in western Uganda. The park's acacia-swathed slopes and valleys are home to giraffe, zebra, buffalo, impala, waterbuck, bushbuck and various other grazers and browsers. Hippos, crocodiles and aquatic birds thrive in an extensive network of lakes and other wetlands.

Canoeing, Lake Bunyonyi

On our canoeing excursion, you'll enjoy so many safari experiences that you just can't get in a vehicle – watch animals come down to drink, enjoy the birds that draw near to water, and feel the cool breeze on your face as you drift along at a canoe's slow rhythm.

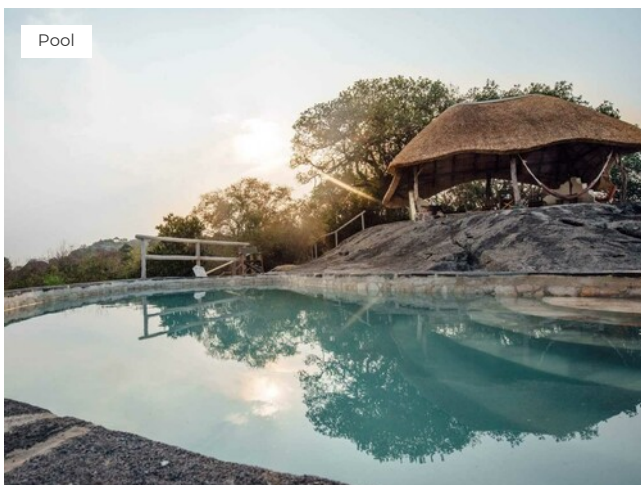


Accommodation | Day 13

Rwakobo Rock Lodge

Lodge | Just outside Lake Mburo National Park

We stay at Rwakobo Rock, which as its name suggests is built around the boulders and natural vegetation of a tall kopje (rocky hill) on the northern border of Lake Mburo National Park. In addition to superb views and quality accommodation in rooms and cottages with fitted nets and a private balcony, this ecofriendly lodge makes extensive use of solar power, rain catchment water and organic building materials.



Pool

Activity Day 13

→ Canoeing, **Lake Bunyonyi**.

After meeting our local guide for the day, we are led out for a canoe trek as well as bird watching on the beautiful Lake Bunyonyi, traversing to the gorgeous Kyabahinga peninsula. Here you will be gladly welcomed with songs plus dances by the resident school children. You will enjoy with the locals at least a cup of "Obushera" which is a local brew. You will ascend the Kyabahinga slopes having a wonderful opportunity to enjoy the birdlife and the verdant terrain. The view is very breathtaking! The guide will certainly brief you about the history of the area.

Among the bird species, you will see are the Dusky Turtle Dove, the Handsome Francolin, and Alpine Chat. A renowned herbalist who is a traditional healer -Omugurusi Jeremiah, based on the hilltop will disclose to you some of the secrets about the flora on the tropical highland.

→ In the late morning, we leave **Lake Bunyonyi** for **Lake Mburo National Park**.

Meal Plan – Day 13

→ Breakfast, Lunch & Dinner



Lake Mburo National Park



Lake Mburo National Park



Lake Mburo National Park



Lake Mburo National Park



Lake Mburo National Park



Lake Mburo National Park



Dugout canoes

🇺🇬 Uganda → 🇷🇼 Rwanda

Final day with us



Lake Mburo National Park

Activity Day 14

- **Guided Game Drive, Lake Mburo National Park**
Once we arrive at Lake Mburo National Park, your safari guide will attempt a game drive on the tracks of the park. On this game drive, there are lots of wildlife to spot - including zebras, topis, buffalo, eland, impala, water hogs, waterbucks, giraffes, etc. The park landscape and savannah scenery are really impressive and photography in this area is great. Your safari guide will afford you as much opportunity for wildlife experiences as possible on this day, so until you are tired, it won't be over!
- Transfer by Road, **Lake Mburo National Park** via **Equator point Uganda** to **Entebbe International Airport**
- Your tour with us ends at **Entebbe International Airport**.

🍴 Meal Plan – Day 14

- Breakfast & Lunch



Gorillas and Wildlife Safaris

Since 2008, Gorillas and Wildlife Safaris has been the preferred tour agent for 1000s of visitors to East Africa, originating from all parts of the world. We meticulously design and operate unique and memorable lifetime safari experiences for Uganda, Rwanda, Kenya, Tanzania and DRC. It is no wonder that we have been awarded many times, among other the TripAdvisor Certificate of Excellence for 5 times and now in the Trip Advisor Hall of Fame.

With our highly skilled safari/holiday experience designers we ensure everyone contacting us gets an exciting time with us right from 1st contact, through the safari package designing and while enjoying the safari experience.

The vehicles should offer maximum comfort and at the same time one of the best safari experiences for our guests. Our safari vehicles have large sliding windows and canopies, which offer our guests excellent views and fantastic opportunities to take photos undisturbed during the safari.

Regular service checks are very important to us to guarantee constant reliability. Your safety is our top priority.

Contact Us

Address Plot 2, Portal Road, Entebbe.
Country Uganda
Phone +256 772 979 425
WhatsApp +256 772 979 425
Email info@gorillasandwildlifesafaris.com
Website www.gorillasandwildlifesafaris.com

Contact person: **Ivan Wassaaka**

Member of:

- Association of Uganda Tour Operators
- Uganda Tourism Board

Follow us on:

- Facebook
- Instagram
- Twitter
- LinkedIn
- YouTube

“Take only memories, leave only footprints”

– Chief Seattle

Reviewed on



Tripadvisor

●●●●● 5.0 out of 5

[Read our 434 reviews on Tripadvisor](#)



★★★★★ 4.6 out of 5

[Read our 28 reviews on Google](#)

Follow us on



[Facebook](#)



[Instagram](#)



[Twitter](#)



[LinkedIn](#)



[YouTube](#)

Colofon

Copyright Text Gorillas and Wildlife Safaris & SafariOffice

Copyright Images SafariBookings.com, Ariadne Van Zandbergen, NH53, Rod Waddington, Ivan Wassaaka, USAID Biodiversity & Forestry, Maceij, Gorillas and Wildlife Safaris & SafariOffice
[View](#) copyright per photographer



Ivan Wassaaka from Gorillas and Wildlife Safaris used the SafariOffice App to create this unique proposal especially for you.