

Tour Length 8 Days / 7 Nights	Travelers ...	Start Tour -	End Tour -
---	------------------	-----------------	---------------

8 Days Uganda Primates & Wildlife Tour

Dear Friend,

We are happy to send you this custom-made quote for our 8 Days Uganda Primates & Wildlife Tour.

We have taken great care in creating this tour that runs over 8 days and 7 nights.

The tour starts on (to be confirmed) in Entebbe and ends on (to be confirmed) at Entebbe International Airport .

Feel free to reach out if you have any questions. We will gladly answer them to make sure that you have the safari of a lifetime with us!

Best regards,



Ivan Wassaka
Gorillas and Wildlife Safaris

Phone +256 772 979 425

Email info@gorillasandwildlifesafaris.com

Summary



8 Days Uganda Primates & Wildlife Tour

Day by Day

Start Destination: Entebbe

See your full itinerary on **Page 7-17**

Days	Main Destination	Accommodation	Meal Plan
● Day 1	Entebbe	Papyrus Guest House Guest house	-
● Day 2	Kibale National Park	Isunga Lodge Lodge	Breakfast, Lunch & Dinner
● Day 3-4	Queen Elizabeth National Park	Buffalo Safari Lodge Lodge	Breakfast, Lunch & Dinner
● Day 5-6	Bwindi Impenetrable National Park	Haven Lodge Buhoma Community Lodge	Breakfast, Lunch & Dinner
● Day 7	Lake Mburo National Park	Rwakobo Rock Lodge Lodge	Breakfast, Lunch & Dinner
● Day 8	Entebbe International Airport	No accommodation	Breakfast & Lunch

End Destination: Entebbe International Airport

Optional: We can arrange additional accommodation before and after the tour.

Highlights

- ☆ Mountain Gorilla Trekking
- ☆ Chimp Trekking
- ☆ Rhino tracking
- ☆ Bwindi Impenetrable National Park
- ☆ Lake Mburo National Park
- ☆ Fort Portal Crater Lakes

Our vehicles



Safari land-cruiser customized



Safari Land-cruiser



safari land-cruiser customized for



All safari land-cruisers



Enhanced and safe game



Land Cruiser



Safari Land Cruiser

Tour Length 8 Days / 7 Nights	Travelers ...
---	------------------

<p>⊕ Included</p> <p>All accommodations, All activities, unless indicated as optional, All transportation (Unless labeled as optional), Park fees, Taxes / VAT, Meals (As specified in the day-by-day section), Services of a professional English-speaking safari guide, Bottled drinking water on the vehicle, Boat trips, All transport by road, Chimps tracking permit, Uganda gorilla permit (\$800 per person)</p>	<p>⊖ Excluded</p> <p>Additional accommodation before and at the end of the tour, International flights, Government imposed increase of taxes and/or park fees, Tips (Tipping guideline US\$10.00 pp per day), Personal items (Souvenirs, travel insurance, visa fees, etc.), Visas</p>
---	---

Breakdown of Costs

2x Adult sharing rooms	£2,405.00	£4,810.00
	Total in GBP	£4,810.00

Payment Terms

Price is based on 2 people sharing a room in **Midrange Accommodation** throughout the tour.

To confirm the tour, we require an initial deposit of £860 per person to obtain your chimpanzee and gorilla tracking permits. The rest can be settled anytime before starting the tour.

[Confirm Booking](#)

Attached Terms & Conditions

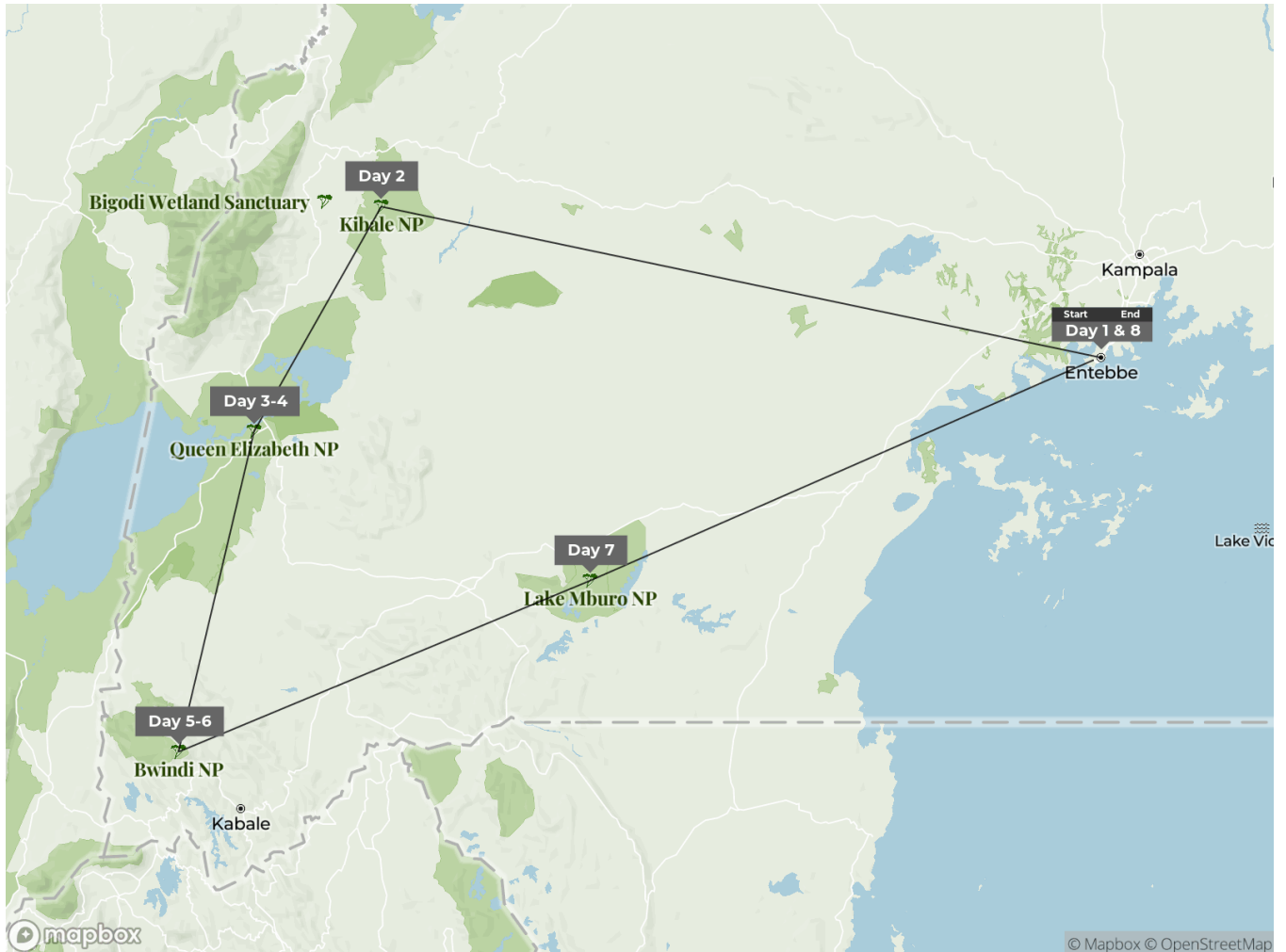
🌐 <https://www.gorillasandwildlifesafaris.com/about/terms-conditions/>

Optional, not included

Option	Price
Lower Budget Accommodation Option	£2,076.00 Per person sharing room
Accommodation Upgrade to Standard Luxury	£3,768.00 Per person sharing room

8 Days Uganda Safari

This All-inclusive Uganda gorilla wildlife safari and holiday comes the dreamlike gorilla trekking experience in Bwindi, Kibale chimps tracking and a chance to encounter over 11 other primate species there, real African wildlife safari experiences and BIG-5 wildlife viewing in Murchison Falls National Park, Lake Mburo National Park. You will also be tracking the white rhinos in Ziwa Rhino Sanctuary.



Start Point Entebbe

Day *Destination & Accommodation*

Day 1	Entebbe Papyrus Guest House
Day 2	Kibale NP Isunga Lodge
Day 3-4	Queen Elizabeth NP Buffalo Safari Lodge
Day 5-6	Bwindi Impenetrable NP Haven Lodge Buhoma Community
Day 7	Lake Mburo NP Rwakobo Rock Lodge
Day 8	Entebbe International Airport (No accommodation)

End Point Entebbe International Airport

Entebbe

Everything has been planned and organized and now it's time to enjoy and start your journey with us. Welcome to Uganda! After introducing you to your guide and answering your questions, we'll take you out to show you all that this amazing country has to offer.

Enclosed by lush tropical jungle and lapped by the oceanic expanse of Lake Victoria, Entebbe is one of the prettiest and greenest towns you could hope to visit anywhere in Africa. It is also the main air gateway to Uganda, and a great starting point for your safari, thanks to its dazzling birdlife, plentiful monkeys, and a great selection of chilled lakeside restaurants.

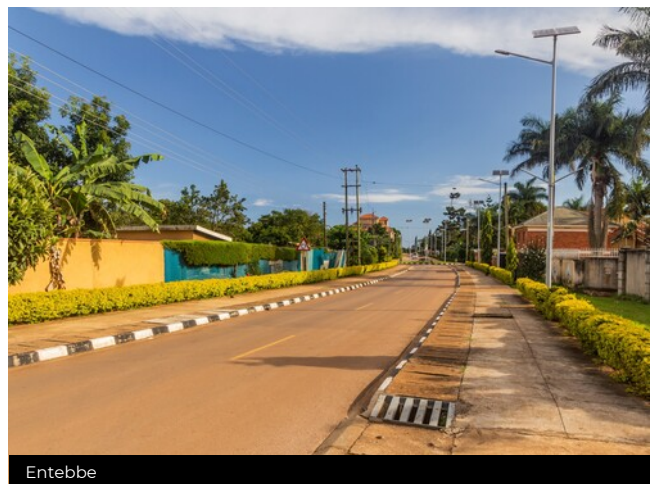
 Accommodation | Day 1
Papyrus Guest House
 Guest house

Papyrus is a small cozy, but stylish guesthouse in the suburbs of Entebbe, about 15 minutes from Entebbe International Airport. With 9 Deluxe Garden Rooms and 5 Standard Mainhouse Rooms, all ensuite, Papyrus is an excellent choice for bed & breakfast safari travellers wishing to spend a night in Entebbe. Trees and charming gardens surround its rooms to give guests a relaxed and private stay. The Guest House's central location allows for some exciting guided activities, like hiking, city walks and biking, shopping, golfing, boat rides, birding, and sightseeing, all reached within a reasonable time.



Activity Day 1

- Step into your Africa adventure. You arrive today at **Entebbe International Airport**.
- Welcome to Uganda! Upon arrival at Entebbe International Airport, you will meet a driver from the hotel waiting to meet with you and transfer you to the hotel, that is about 10 minutes of driving.



Entebbe



Entebbe sunrises

Transfer to Kibale National Park

Set on fertile volcanic soils studded with beautiful crater lakes, Kibale National Park protects a 766km² tract of mid-altitude rainforest extending northwards from Queen Elizabeth National Park. Here, you can look forward to seeing a wide variety of monkeys, birds and butterflies, but the star attraction is a 1,000-strong population of chimpanzees, and their hysterical pant-hoot vocalizations, which carry deep into the forest interior.

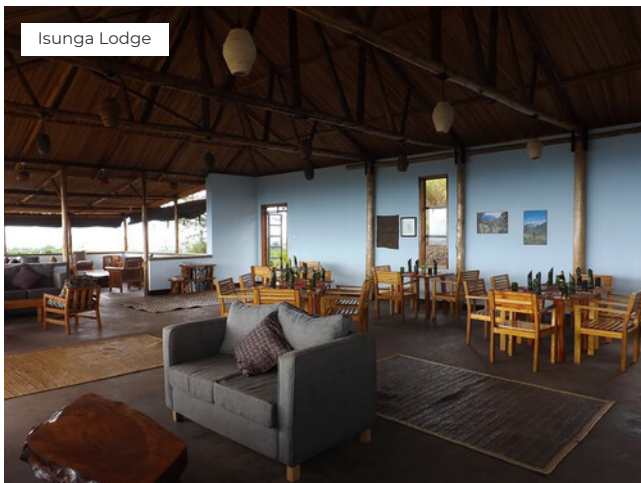


Accommodation | Day 2

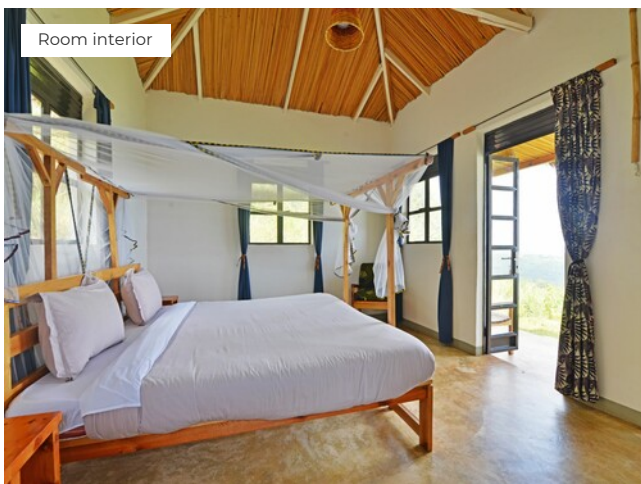
Isunga Lodge

Lodge | Just outside Kibale National Park

Enjoy the hospitality of Isunga Lodge.



Isunga Lodge



Room interior

Activity Day 2

→ Please plan to set off no later than 8 am today from the Entebbe. We shall be driving the Kibale National Park, an expansive forest mostly referred to as East Africa's Primates' capital. You continue driving through the undulating highlands of southwestern Uganda on your way to the greener and beautiful Fort Portal area. The lush rolling hills of this region provide good "photo opportunities".

Transfer time; 4 to 5 hours

→ We shall be going to Bigodi Swamp for a guided primates walk accompanied by a traditional village tribes' experience. Bigodi swamp is great for its many monkey species and birds. You will expect birds like the great Blue turaco, blue monkeys, baboons, otters, mongoose, bushbucks, bush pigs, and among others. At the tail end of the walk, the local guides lead you in the local community where you can participate in local alcohol brewing, coffee roasting, farming, basket weaving, among other activities.



Meal Plan – Day 2

→ Breakfast, Lunch & Dinner



Kibale National Park



Chimpanzees



Ugandan red colobus



Kibale National Park



Kibale National Park



Chimpanzee



Bigodi Wetland Sanctuary

Queen Elizabeth National Park

We are once again privileged to enjoy the rich forest biodiversity of Kibale National Park.

Chimp Trekking, Kibale National Park

The opportunity to see chimpanzees in the wild is one of the most memorable of all safari activities. Getting close to these creatures that share so much of our DNA is a once-in-a-lifetime experience, and the excitement of walking through the forest and knowing that they are close will stay with you forever.



Lion Pride



Queen Elizabeth National Park

Activity Day 3

→ Chimp Trekking, Kibale National Park

There are two chimp trekking sessions, one starting at 8 am and the other at 11 am and we plan to be on one of these at least 20 minutes before. The starting place for the chimps trek is the park headquarters, at Kanyankyu River camp from where most of the park's tourist activities commence.

At the Kibale park office, you will be asked for your passport for registration and then briefed about the chimpanzee tracking. The trek is mostly mild trekking through the jungles of Kibale, guided by the park rangers. You will be able to locate the chimps by listening for their pant-hooting calls, then hustle to the area from which they are calling. You should be able to observe them as they feed in fruiting trees, lounge, and socialize with each other, or even, occasionally hunt. You will be allowed one hour in the presence of the chimpanzees, and then after led back to the Park office where your tour driver is awaiting.

On the way back, we often meet other primates inhabiting this forest. There are at least 12 primates species in Kibale and these include the black and white colobus monkeys, L'Hoest monkeys, grey-cheeked mangabey, red-tailed monkeys, bushbabies, pottos.

You should be on the lookout for forest bird species like the yellow-spotted nicator, rumped tinker bird, little greenbul, green breasted pitta, the crowned eagle, black bee-eater and mammals like elephants.

→ Today we shall be driving to Queen Elizabeth National Park. The game seen will depend on the season; the Kasenyi plains are good with lions, and the Mweya peninsula for a variety of other wild animals. Queen Elizabeth National Park is dominated on its northern border by the snow-capped 16,000-foot Rwenzori Mountains - the famed "Mountains of the Moon".

This 767-square-mile conservation area is bordered on the northeast by Lake George and on the southwest by Lake Edward; its western border adjoins the Congo Parc du Virunga. You will expect to see teeming herds of impala-like Uganda kobs, as well as topis, elephants and lions, giant forest hogs, and Cape buffalos. There are also several soda lakes filling ancient volcanic calderas where flamingos reside seasonally.

Transfer time; ±1.5 hours



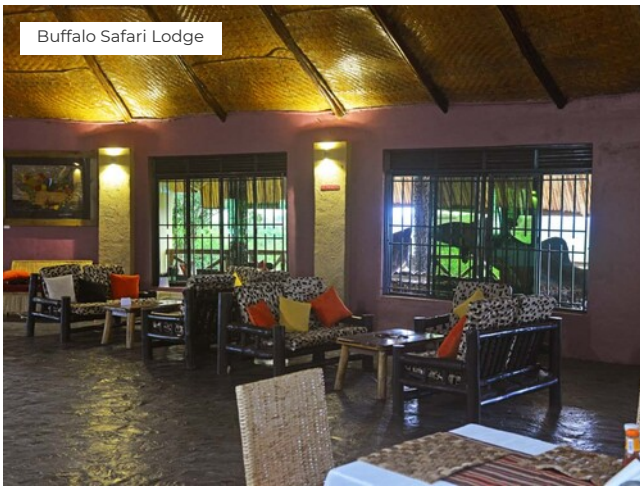
Accommodation | Day 3 & 4

Buffalo Safari Lodge

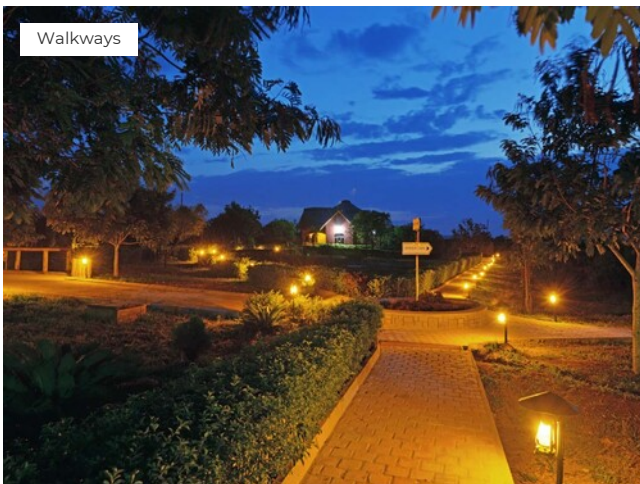
Lodge | Just outside Queen Elizabeth National Park

Buffalo Safari Lodge is located near the magical Kazinga channel, 1km off Kasese-Mbarara road. Queen Elizabeth Park, Uganda. The resort lies in 25 private acres of wilderness, a serene environment full of spectacular flora and fauna – elephant, buffalo, hippo, warthog, and many bird species, all at the glance of an eye.

Surrounded by lush greenery and soothing sounds of wildlife, our retreat offers an idyllic setting to escape the stresses of modern life, revitalize your spirit, and rediscover a sense of balance.



Buffalo Safari Lodge



Walkways

Activity Day 4

→ We set out early in the morning for a game drive in the northern part of the park on the Kasenyi Track in search of lions, elephants and solitary buffaloes. This is the best time for opportunities of viewing the cats in action owing to the vast population of Uganda kobs. We have an excellent chance to view just about every animal here at a very close range.

→ Boat Trip, Kazinga Channel

After, we'll enjoy a two-hour boat safari along the Kazinga Channel. This affords the opportunity to view wildlife up close: hippos huff and spray and buffalo linger in the shallows. The shores of the channel are also home to an array of birds including pink-backed pelicans, pied and malachite kingfishers, saddle-billed storks, and many others.

Meal Plan – Day 3 & 4

→ Breakfast, Lunch & Dinner



Spacious rooms



Queen Elizabeth National Park



Queen Elizabeth National Park



Queen Elizabeth National Park



Queen Elizabeth National Park



Queen Elizabeth National Park



Uganda Kob

Bwindi Impenetrable National Park

Supporting almost half the world's mountain gorillas, Bwindi Impenetrable National Park is arguably the best place anywhere in the world to track these charismatic gentle giants through their misty forest home. But there is far more to this UNESCO World Heritage Site than just gorillas. The lush forest interior is also home to a diversity of other mammals, ranging from L'Hoest's monkey and chimpanzee to elephant and the yellow-backed duiker. A total of 350 bird species, 23 of which are unique to the Albertine Rift Valley, ensure that Bwindi ranks among East Africa's most rewarding bird-watching destinations.



Bwindi Impenetrable National Park



Bwindi Mountain Gorillas

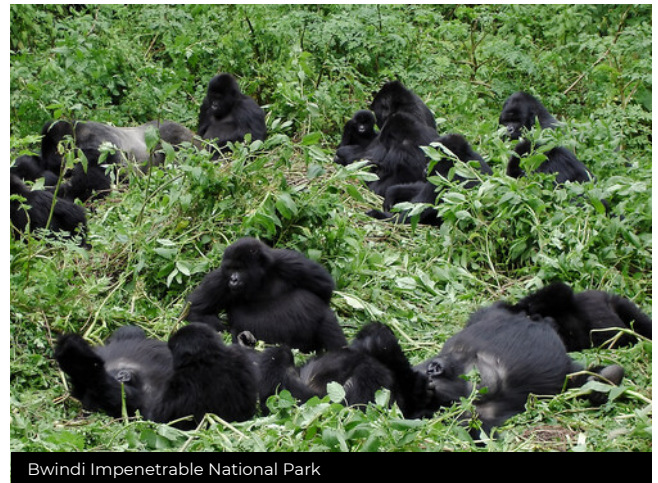
Activity Day 5

→ Guided Game Drive, Ishasha Sector

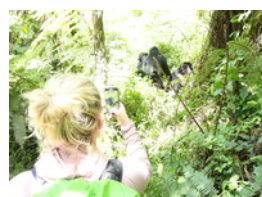
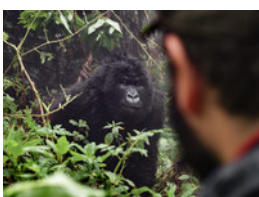
Drive deeper into the park this morning on a two-hour drive down into the southern Ishasha sector of the Park. Ishasha is a remote grassland area famous for the lion population that are often seen climbing the massive fig trees. Enjoy an afternoon game drive and sundowners before taking dinner and spending the night at your lodge/ camp.

→ Transfer by Road, Queen Elizabeth National Park After a lovely bush breakfast and morning game drive, the journey continues with an easy but scenic drive to Bwindi Impenetrable Forest and entry point for the famous gorilla treks. Arrive by late afternoon and settle into a 2-night stay at the charming lodge with amazing views across the forest.

Transfer time; ±2.5 hours



Bwindi Impenetrable National Park





Accommodation | Day 5 & 6

Haven Lodge Buhoma Community

Lodge | Just outside Bwindi Impenetrable National Park

Imagine a budget-friendly, cozy hideaway just a short walk from the Buhoma visitor center, Bwindi Impenetrable National Park's North entry gate. Buhoma Community Haven Lodge is where your unforgettable gorilla expedition in Bwindi begins. At Buhoma Community Haven Lodge, you'll wake up to breathtaking forest views. This lodge is cared for by the Buhoma Mukono Community Development Association, ensuring your journey is not only about exploration but also about connecting with the local community. They're all about using clean energy and working with nearby neighborhoods to keep things green and happy.

In the lounge, you can sit back, relax, and soak in nature's artistry – all while enjoying mouthwatering dishes prepared by our talented chef. And before you leave, don't forget to visit the little shop filled with African crafts and postcards that'll let you take pieces of this magic back home.

They serve Western and African cuisine prepared by Ugandan chefs using locally grown products. The meals would, for example, consist of a fresh mushroom soup, pan-seared tilapia fish or vegetable masala, roasted potatoes, saucy mixed vegetables, crepes with honey sauce, tea/coffee and hot chocolate.

Your breakfast will be fresh fruits and toast accompanied by your choice of prepared eggs (scrambled, fried, boiled, poached, omelet) along with coffee/tea and juice.

For gorilla trackers, a pack for you is a sandwich (egg, tomato and cheese, peanut butter/jelly, tomato, or cheese), a juice box, and two pieces of fruit, a boiled egg, and biscuits.

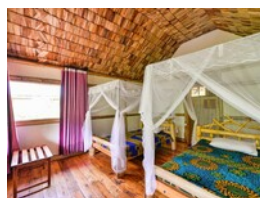
Activity Day 6

→ **Mountain Gorilla Trekking, Bwindi Impenetrable National Park**

The Big Day arrives! Enjoy a good breakfast to give you energy for the day ahead. A short transfer will take you to Park HQ where you will be allocated to your gorilla family, receive a briefing on the ecology of the animals, and meet your guides and porters (you can hire a porter for \$15). Then the trek begins. Expect to be walking for on average 3 hours in steep terrain before making contact with the gorillas. Then you have up to one hour to observe these amazing animals from a distance of 6 metres. When the magical hour is up, return through the forest to HQ and your lodge.

 **Meal Plan – Day 5 & 6**

→ Breakfast, Lunch & Dinner



Lake Mburo National Park

Although it isn't a classic Big Five destination (elephants and rhino are absent, and lion and leopard scarce), Lake Mburo National Park hosts a varied selection of African wildlife, including several iconic species not found elsewhere in western Uganda. The park's acacia-swathed slopes and valleys are home to giraffe, zebra, buffalo, impala, waterbuck, bushbuck and various other grazers and browsers. Hippos, crocodiles and aquatic birds thrive in an extensive network of lakes and other wetlands.

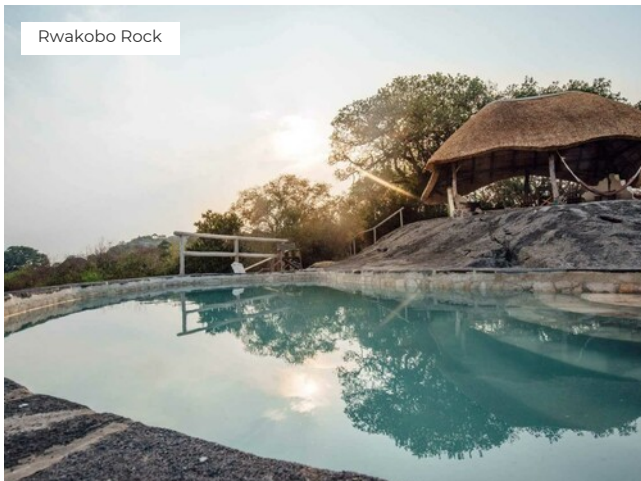


Accommodation | Day 7

Rwakobo Rock Lodge

Lodge | Just outside Lake Mburo National Park

We stay at Rwakobo Rock, which as its name suggests is built around the boulders and natural vegetation of a tall kopje (rocky hill) on the northern border of Lake Mburo National Park. In addition to superb views and quality accommodation in rooms and cottages with fitted nets and a private balcony, this ecofriendly lodge makes extensive use of solar power, rain catchment water and organic building materials.



Rwakobo Rock



Activity Day 7

→ Transfer by Road, Bwindi Impenetrable National Park to Lake Mburo National Park

We check out from the camp/lodge early in the morning for a drive down the grassed and terraced escarpments of southwestern Uganda while taking in the breathtaking sights of the hills of the region dubbed 'the little Switzerland of Africa'.

This area is a highly fertile, mountainous region with steep-sided hills covered from top to bottom in neatly terraced cultivated rows. Not to miss as we traverse Mbarara are the impressive longhorn Ankole cattle.

Transfer time; 3 to 4 hours

→ Transfer Game Drive, Lake Mburo National Park to Rwakobo Rock

Upon arrival, you will go for the game drive which will give you insights into animal species like the zebras, topes, elands, impalas, buffaloes, antelopes and so many others.

Meal Plan – Day 7

→ Breakfast, Lunch & Dinner



Hippopotamus (*Hippopotamus amphibius*), Lake Mburo National Park, Uganda



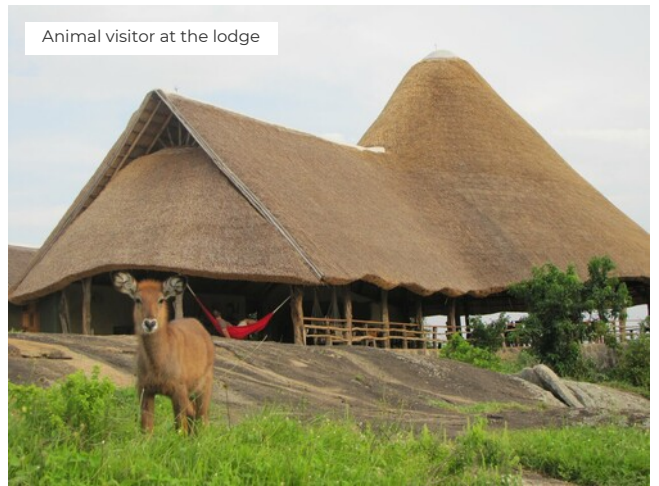
Lake Mburo National Park



Lake Mburo National Park



A double room



Animal visitor at the lodge

Final day with us

As your safari in Uganda ends, it's time to look back on your trip with us and enjoy the incredible memories we're sure you have.



Lake Mbuo National Park



Lake Mbuo National Park

Activity Day 8

- **Guided Game Drive, Lake Mbuo National Park**
Once we arrive at Lake Mbuo National Park, your safari guide will attempt a game drive on the tracks of the park. On this game drive, there are lots of wildlife to spot - including zebras, topis, buffalo, eland, impala, water hogs, waterbucks, giraffes, etc. The park landscape and savannah scenery are really impressive and photography in this area is great. Your safari guide will afford you as much opportunity for wildlife experiences as possible on this day, so until you are tired, it won't be over!
- Transfer by Road, **Lake Mbuo National Park** to **Entebbe International Airport**
After your early morning activities, return the lodge for a late breakfast and check-out.

We then bid farewell to the **Lake Mbuo National Park's** friendly staff as we depart for **Entebbe International Airport**

En route we will stop at the Equator for photographs and 'polar-water experiment', then local community crafts shops and fruit markets.

We will be arriving **Entebbe International Airport** in the evening before for your flight back home.

Transfer time; 3 to 4 hours

🍴 Meal Plan – Day 8

- Breakfast & Lunch



Gorillas and Wildlife Safaris

Since 2008, Gorillas and Wildlife Safaris has been the preferred tour agent for 1000s of visitors to East Africa, originating from all parts of the world. We meticulously design and operate unique and memorable lifetime safari experiences for Uganda, Rwanda, Kenya, Tanzania and DRC. It is no wonder that we have been awarded many times, among other the TripAdvisor Certificate of Excellence for 5 times and now in the Trip Advisor Hall of Fame.

With our highly skilled safari/holiday experience designers we ensure everyone contacting us gets an exciting time with us right from 1st contact, through the safari package designing and while enjoying the safari experience.

The vehicles should offer maximum comfort and at the same time one of the best safari experiences for our guests. Our safari vehicles have large sliding windows and canopies, which offer our guests excellent views and fantastic opportunities to take photos undisturbed during the safari.

Regular service checks are very important to us to guarantee constant reliability. Your safety is our top priority.

Contact Us

Address Plot 2, Portal Road, Entebbe.
Country Uganda
Phone +256 772 979 425
WhatsApp +256 772 979 425
Email info@gorillasandwildlifesafaris.com
Website www.gorillasandwildlifesafaris.com

Contact person: **Ivan Wassaaka**

Member of:

- Association of Uganda Tour Operators
- Uganda Tourism Board

“Take only memories,
leave only footprints”

– Chief Seattle

Colofon

Copyright Text Gorillas and Wildlife Safaris & SafariOffice

Copyright Images SafariBookings.com, Ariadne Van Zandbergen, Ivan Wassaaka, USAID Biodiversity & Forestry, Gorillas and Wildlife Safaris & SafariOffice
[View](#) copyright per photographer



Ivan Wassaaka from Gorillas and Wildlife Safaris used the SafariOffice App to create this unique proposal especially for you.