

Tour Length <b>12 Days / 11 Nights</b>	Travelers ...	Start Tour -	End Tour -
---	------------------	-----------------	---------------

# 12 Days Uganda Primates & Wildlife Special

**Dear Friend,**

We are happy to send you this custom-made quote for our 12 Days Uganda Primates & Wildlife Special.

We have taken great care in creating this tour that runs over 12 days and 11 nights for ...

The tour starts on (to be confirmed) in Entebbe and ends on (to be confirmed) at Entebbe International Airport .

Feel free to reach out if you have any questions. We will gladly answer them to make sure that you have the safari of a lifetime with us!

Best regards,



Ivan Wassaka  
Gorillas and Wildlife Safaris

**Phone** +256 772 979 425

**Email** [info@gorillasandwildlifesafaris.com](mailto:info@gorillasandwildlifesafaris.com)



# 12 Days Uganda Safari

## Day by Day

 **Start Destination:** Entebbe

See your full itinerary on **Page 7-25**

Days	Main Destination	Accommodation	Meal Plan
● Day 1	Entebbe	Papyrus Guest House Guest house	-
● Day 2	Murchison Falls National Park	Pakuba Safari Lodge Lodge	Breakfast, Lunch & Dinner
● Day 3	Murchison Falls National Park	Pakuba Safari Lodge Lodge	Breakfast, Lunch & Dinner
● Day 4	Kibale National Park	Isunga Lodge Lodge	Breakfast, Lunch & Dinner
● Day 5	Kibale National Park	Isunga Lodge Lodge	Breakfast, Lunch & Dinner
● Day 6-7	Queen Elizabeth National Park	Buffalo Safari Lodge Lodge	Breakfast, Lunch & Dinner
● Day 8	Bwindi Impenetrable National Park	Ichumbi Gorilla Lodge Lodge	Breakfast, Lunch & Dinner
● Day 9	Bwindi Impenetrable National Park	Ichumbi Gorilla Lodge Lodge	Breakfast, Lunch & Dinner
● Day 10	Mgahinga Gorilla National Park	BirdNest Resort Resort	Breakfast, Lunch & Dinner



## Summary

## Day by Day

Continued from previous page

Days	Main Destination	Accommodation	Meal Plan
● Day 11	Lake Bunyonyi	Rwakobo Rock Lodge Lodge	Breakfast, Lunch & Dinner
● Day 12	Entebbe International Airport	No accommodation	Breakfast & Lunch

📍 **End Destination:** Entebbe International Airport

**Optional:** We can arrange additional accommodation before and after the tour.

## Highlights

- ☆ Mountain Gorilla Trekking
- ☆ Chimp Trekking
- ☆ Rhino tracking
- ☆ Bwindi Impenetrable National Park
- ☆ Lake Mburo National Park
- ☆ Lake Bunyonyi
- ☆ Murchison Falls National Park
- ☆ Fort Portal Crater Lakes

## Our vehicles



Customised safari Land



Customized safari land-



All safari land-cruisers



Shorter



Enhanced and safe game



Safari land-cruiser customized

Tour Length <b>12 Days / 11 Nights</b>	Travelers ...
---	------------------

<p><b>⊕ Included</b></p> <p>All accommodations, All activities, unless indicated as optional, All transportation (Unless labeled as optional), Park fees, Taxes / VAT, Meals (As specified in the day-by-day section), Services of a professional English-speaking safari guide, Bottled drinking water on the vehicle, Boat trips, All transport by road, Uganda gorilla permit (\$800 per person), Chimpanzee habituation experience permit in Kibale, Golden monkeys tracking permit (Mgahinga)</p>	<p><b>⊖ Excluded</b></p> <p>Additional accommodation before and at the end of the tour, International flights, Government imposed increase of taxes and/or park fees, Personal items (Souvenirs, travel insurance, visa fees, etc.), Visas, Drinks other than drinking water provided on the vehicle</p>
--	--

## Breakdown of Costs

<b>2x Adult sharing rooms</b>	£3,256.00	£6,512.00
	<b>Total in GBP</b>	<b>£6,512.00</b>

### Payment Terms

Price is based on 2 people sharing a room in **Midrange Accommodation** throughout the tour.

### To confirm the tour

To confirm the tour, a deposit of £860 per person is required for the gorilla permits and chimp trek permit. The rest can be settled anytime before starting the tour.

[Confirm Booking](#)

### Attached Terms & Conditions

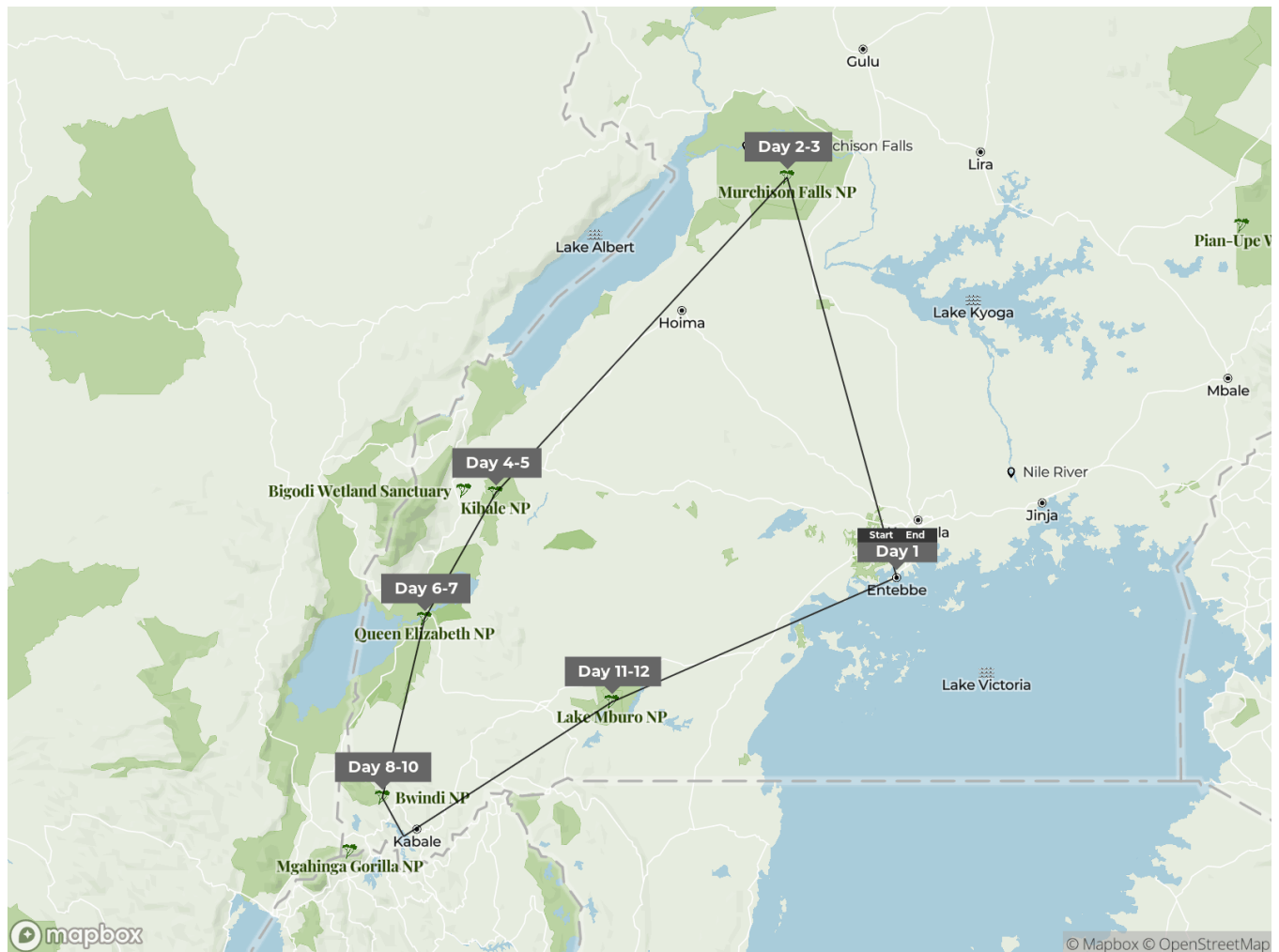
<https://www.gorillasandwildlifesafaris.com/about/terms-conditions/>

## Optional, not included

Option	Destination	Price
Day 9: Top up £555 for gorilla habituation experience	Bwindi Impenetrable NP	£588.00 Extra per person
Accommodation Upgrade to Standard Luxury	-	£5,213.00 Per person sharing room

# 12 Days Uganda Safari

This All-inclusive Uganda gorilla wildlife safari and holiday comes the dreamlike gorilla trekking experience in Bwindi, Kibale chimps tracking and a chance to encounter over 11 other primate species there, real African wildlife safari experiences and BIG-5 wildlife viewing in Murchison Falls National Park, Queen Elizabeth National Park, Lake Mburo National Park. You will also be tracking the white rhinos in Ziwa Rhino Sanctuary.



**Start Point** Entebbe

**Day** *Destination & Accommodation*

Day 1	<b>Entebbe</b> Papyrus Guest House
Day 2-3	<b>Murchison Falls NP</b> Pakuba Safari Lodge
Day 4-5	<b>Kibale NP</b> Isunga Lodge
Day 6-7	<b>Queen Elizabeth NP</b> Buffalo Safari Lodge
Day 8-9	<b>Bwindi Impenetrable NP</b> Ichumbi Gorilla Lodge
Day 10	<b>Mgahinga Gorilla NP</b> BirdNest Resort
Day 11	<b>Lake Bunyonyi</b> Rwakobo Rock Lodge
Day 12	<b>Entebbe International Airport</b> (No accommodation)

**End Point** Entebbe International Airport

# Arrival at Entebbe International Airport, Transfer to Hotel in Entebbe

We're as excited as you are to get started on your Ugandan safari. After an introduction to your guide and a few brief formalities, it's time to get out there and find the animals for which Uganda is so famous.

Carved into the jungle-fringed shores of Africa's largest lake, Entebbe has a sprawling green feel belying its former status as colonial-era capital and present role as the main air gateway to Uganda. Don't arrive here expecting a cluster of high-rise buildings, but rather a sprawl of suburban gardens that merge into a golf course and botanical garden bordering Lake Victoria.



Accommodation | Day 1

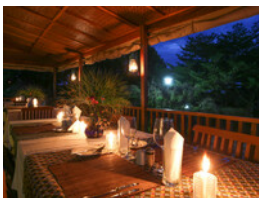
## Papyrus Guest House

Guest house

We overnight at the owner-managed Papyrus Guest House, which comprises a renovated 1940s house set in a lush garden typical of Entebbe.

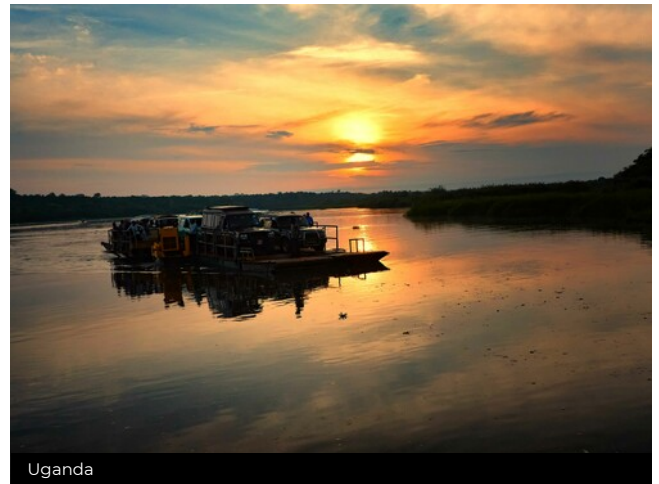


Papyrus Guest House

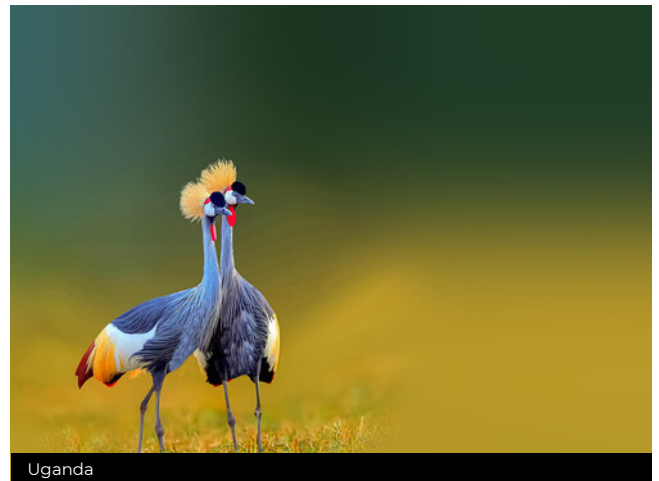


## Activity Day 1

→ You will be transferred from the airport in **Entebbe International Airport**  
**Transfer time; 5-10 minutes**



Uganda



Uganda



# Transfer to Murchison Falls National Park

Your Ugandan safari starts here and now. With all of the incredible wildlife that this country has to offer, we know that you're keen to get started. And as soon as we introduce you to your guide and answer your questions, we'll get you out there exploring.

## Ziwa Rhino Sanctuary

Along the way, we have our first Uganda wildlife experience. This will be with the white rhinos at Ziwa Rhino Sanctuary. Ziwa Rhino sanctuary is the only place to trek wild Rhinos in Uganda, the other Rhinos are found at Uganda wildlife education center (former Zoo) in Entebbe.

## Murchison Falls National Park

One of the few African safari destinations that can be explored by car, by boat or on guided walks, the 3,480km<sup>2</sup> Murchison Falls National Park is dominated geographically by the Nile River and 43m-high waterfall after which it is named. Here you can be confident of seeing elephant, buffalo, hippo, giraffe, waterbuck, hartebeest, oribi, Uganda kob, crocodile and a good range of aquatic birds. With a bit of luck you might also encounter lion, leopard, patas monkey and the bizarre stork-like shoebill.

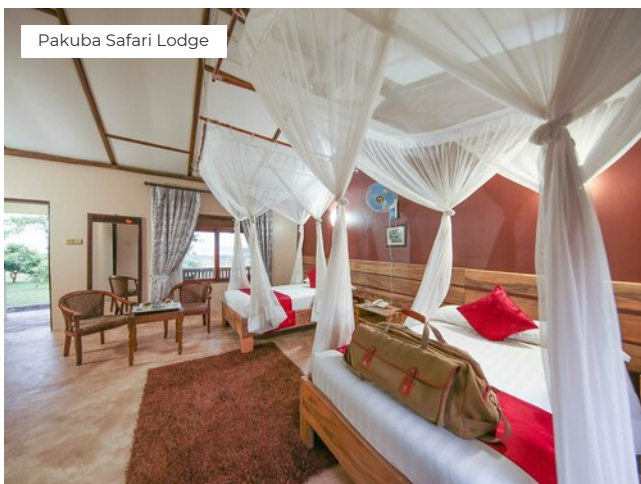


Accommodation | Day 2

### Pakuba Safari Lodge

Lodge | Inside Murchison Falls National Park

We return to the northern plains of Murchison Falls National Park and Pakuba Safari Lodge.



Pakuba Safari Lodge

## Activities Day 2

### Morning

→ Transfer by Road, **Entebbe to Ziwa Rhino and Wildlife Ranch**  
**Transfer time; 2 to 3 hours**

### Afternoon

→ This afternoon you will join us for one of our favorite activities when we go rhino tracking. Come with us as we look for rhinos and track them through the bush.

After about 2 hours of driving, we go on a detour to the Ziwa Rhino Sanctuary the only place in Uganda where white rhinos can be found in the wild. For a better and more intimate experience, visitors to the rhino sanctuary can track them and get to about 6 meters from them. We shall be allocated a local ranger guide to lead us to the day's location of the rhinos. A short briefing about the instructions to follow on the trek to the rhinos shall follow before we start our walk to reach for them.

It won't take long before us reaching the rhinos. Although sometimes they wander off to far ranges, we could still drive for a bit to reach them faster. There are often sightings of other bigger wild mammals on this trek. It is not uncommon to encounter waterbucks, bushbucks, kobs, duikers and sometimes leopard on this trek. When you reach the rhinos, you will be allowed a maximum of 1 hour with them.

→ Transfer by Road, **Ziwa Rhino and Wildlife Ranch to Murchison Falls National Park**  
**Transfer time; 2 to 3 hours**

### Meal Plan – Day 2

→ Breakfast, Lunch & Dinner





Murchison Falls National Park



White rhinoceros with young



White rhinoceros with young



Rothschild's giraffes



A room



View from the lodge

# Murchison Falls National Park

We have enough time to explore Uganda's largest national park: Murchison Falls National Park. Apart from the extensive wild game list, the landscape of Murchison Falls National Park is definitely another beauty to behold. If you have a good camera, you should prepare for one of those very busy days. If you are like me, it is highly likely that you need a second battery for this game drive. There is also a very diverse birding list, especially in the delta area of the park. A wildlife game drive in Murchison Falls National Park could even go on for as long as 7 hours if you like. There is just so much to cover in the expansive park. The Murchison Falls boat trip along the Nile is often cited as being the highlight of a trip to Murchison since it allows you to get up-close and personal with the animals. Along this stretch of the river, there are reported to be around 4,000 hippos in addition to some enormous Nile crocodiles. The birdlife is stunning with brightly colored kingfishers and bee-eaters darting along the riverbanks. If lucky, you may see the rare and prehistoric-looking shoebill, which is a cross between the dodo and a dinosaur.



Leopard in a tree



## Activities Day 3

### Early Morning

→ In Murchison Falls National Park, your early morning game drive gets you close to the wildlife when they're most active, and the landscapes are at their most beautiful.

Seriously consider enduring an early morning start this morning to increase your chances of sighting the big cats in Murchison Falls National Park. The usual setting is for guests to depart from the lodge not later than 6:30 AM and then launch into the wilderness before the heat of the day. There is just so much to see in Murchison Falls National Park - hyenas, leopard, lions, giraffes, herds of elephants, buffaloes and many more. We allow for whole morning to be spent on covering most of the lucrative trucks in the park, combing out every thicket we expect to have wildlife in it. Enjoy and have all the fun!

### Afternoon

→ Our afternoon will be spent on a boat trip along the Nile River to the bottom of the Murchison Falls. This boat trip along the Nile is often cited as being the highlight of a trip to Murchison since it allows you to get up-close and personal with the animals. Along this stretch of the river, there are reported to be around 4,000 hippos in addition to some enormous Nile crocodiles. The bird life is stunning with brightly coloured kingfishers and bee-eaters darting along the riverbanks.

→ We plan to have a stop at the top of the falls, the vantage place to view Murchison Falls closely from above. While at the top of Murchison Falls, you will see the entire Nile River, the longest river in the world, forcing itself through a 7-meter wide gap and then furiously plunging downwards 43 meters. The sight is beyond description and the memory of which will certainly stick with you for the rest of your life. No wonder many keep returning over and over again.

### Meal Plan – Day 3

→ Breakfast, Lunch & Dinner



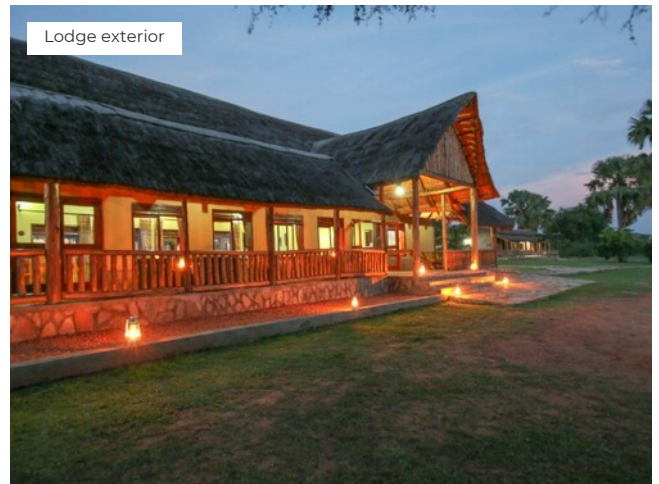
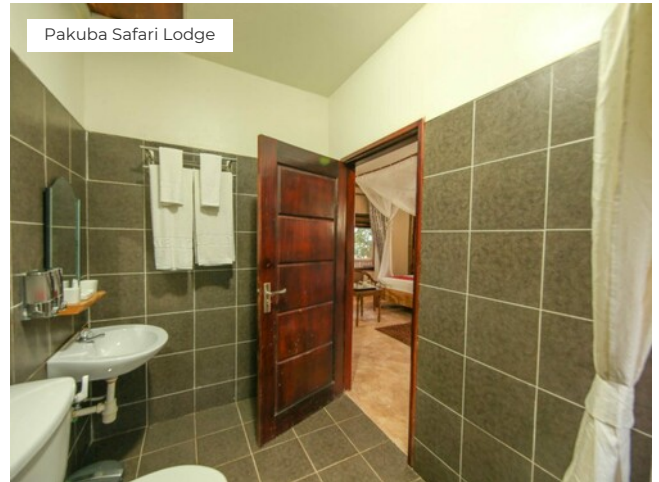


Accommodation | Day 3

**Pakuba Safari Lodge**

Lodge | Inside Murchison Falls National Park

We return to the northern plains of Murchison Falls National Park and Pakuba Safari Lodge.





Top of Murchison Falls



# Transfer to Kibale National Park

Set on fertile volcanic soils studded with beautiful crater lakes, Kibale National Park protects a 766km<sup>2</sup> tract of mid-altitude rainforest extending northwards from Queen Elizabeth National Park. Here, you can look forward to seeing a wide variety of monkeys, birds and butterflies, but the star attraction is a 1,000-strong population of chimpanzees, and their hysterical pant-hoot vocalizations, which carry deep into the forest interior.

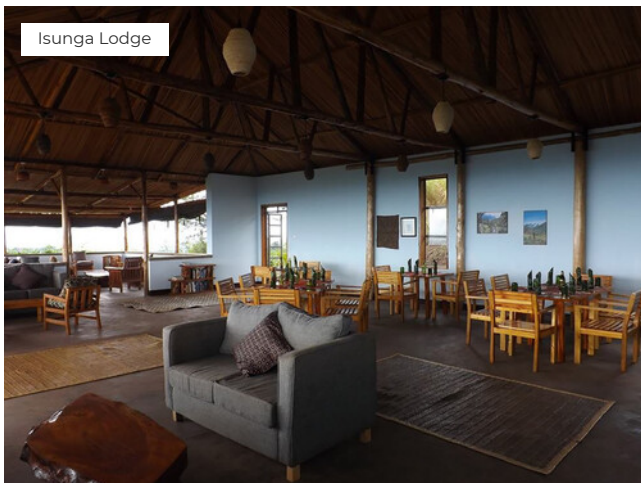


Accommodation | Day 4

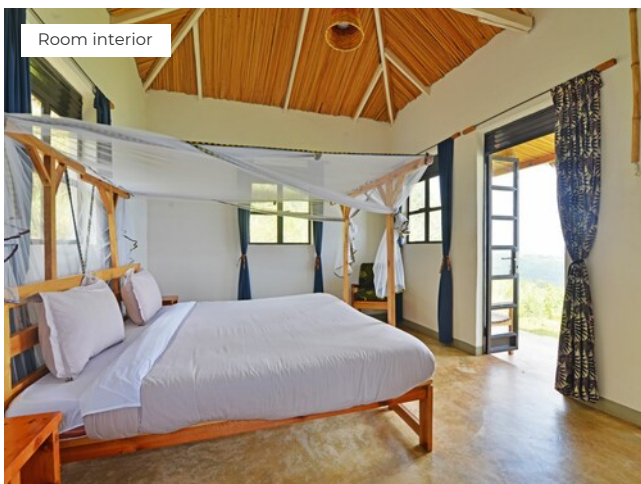
## Isunga Lodge

Lodge | Just outside Kibale National Park

Enjoy the hospitality of Isunga Lodge.



Isunga Lodge



Room interior

## Activities Day 4

### Morning & Afternoon

→ Transfer by Road, **Murchison Falls National Park to Kibale National Park**

Please plan to set off no later than 8 am today from the lodge. We shall be driving the Kibale National Park, an expansive forest mostly referred to as East Africa's Primates' capital. We shall be driving for at least two hours through Murchison Falls, sighting wildlife along the way and then through beautiful remote African villages.

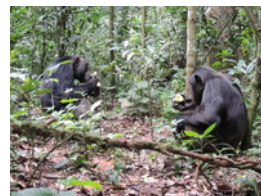
You continue driving through the undulating highlands of southwestern Uganda on your way to the greener and beautiful Fort Portal area. The lush rolling hills of this region provide good "photo opportunities".

**Transfer time;** 4 to 5 hours

→ We shall be going to Bigodi Swamp for a guided primates walk accompanied by a traditional village tribes' experience. Bigodi swamp is great for its many monkey species and birds. You will expect birds like the great Blue turaco, blue monkeys, baboons, otters, mongoose, bushbucks, bush pigs, and among others. At the tail end of the walk, the local guides lead you in the local community where you can participate in local alcohol brewing, coffee roasting, farming, basket weaving, among other activities.

### Meal Plan – Day 4

→ Breakfast, Lunch & Dinner





Bigodi Wetland Sanctuary



# Kibale National Park

We are once again privileged to enjoy the rich forest biodiversity of Kibale National Park.

## Chimp Trekking, Kibale National Park

The opportunity to see chimpanzees in the wild is one of the most memorable of all safari activities. Getting close to these creatures that share so much of our DNA is a once-in-a-lifetime experience, and the excitement of walking through the forest and knowing that they are close will stay with you forever.

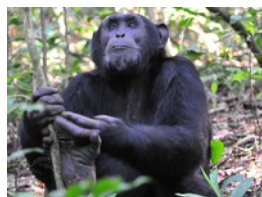
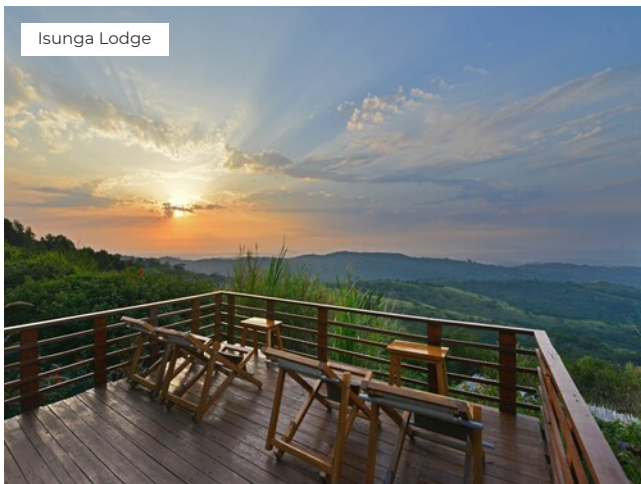


Accommodation | Day 5

### Isunga Lodge

Lodge | Just outside Kibale National Park

We return to enjoy the hospitality of Isunga Lodge.



## Activity Day 5

### → Chimp Trekking, Kibale National Park

There are two chimp trekking sessions, one starting at 8 am and the other at 11 am and we plan to be on one of these at least 20 minutes before. The starting place for the chimps trek is the park headquarters, at Kanyankyu River camp from where most of the park's tourist activities commence.

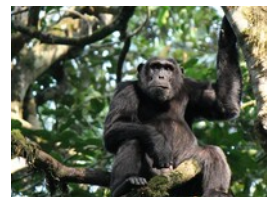
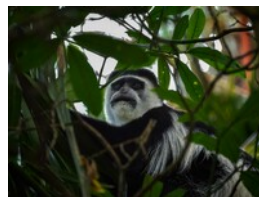
At the Kibale park office, you will be asked for your passport for registration and then briefed about the chimpanzee tracking. The trek is mostly mild trekking through the jungles of Kibale, guided by the park rangers. You will be able to locate the chimps by listening for their pant-hooting calls, then hustle to the area from which they are calling. You should be able to observe them as they feed in fruiting trees, lounge, and socialize with each other, or even, occasionally hunt. You will be allowed one hour in the presence of the chimpanzees, and then after led back to the Park office where your tour driver is awaiting.

On the way back, we often meet other primates inhabiting this forest. There are at least 12 primates species in Kibale and these include the black and white colobus monkeys, L'Hoest monkeys, grey-cheeked mangabey, red-tailed monkeys, bushbabies, pottos.

You should be on the lookout for forest bird species like the yellow-spotted nicator, rumped tinker bird, little greenbul, green breasted pitta, the crowned eagle, black bee-eater and mammals like elephants.

### Meal Plan – Day 5

→ Breakfast, Lunch & Dinner



# Queen Elizabeth National Park

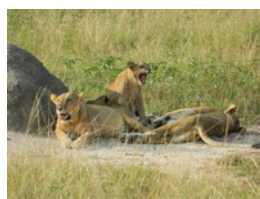
Explore Queen Elizabeth National Park, Uganda's best all-round safari destination. In addition to being home to four of the Big Five (lion, leopard, elephant and buffalo), this biodiverse park is studded with wetlands that support an astonishing 5,000 hippos along with large flocks of flamingos, pelicans and other aquatic birds. Weather permitting, the views to the glacial peaks of the Rwenzori, Africa's second-highest mountain (after Kilimanjaro), are also exceptional.



Lion cubs on the road after a rain storm



Queen Elizabeth National Park



## Activity Day 6

→ Transfer by Road, **Kibale National Park** to **Queen Elizabeth National Park**

While driving to Queen Elizabeth National Park, on the righthand side are views of the Rwenzori mountains, one of the great mountain ranges of the world.

**Transfer time; 1 to 2 hours**

→ As you enter Queen Elizabeth National park, we shall try exploring the Katwe Explosion Craters in the north of the park. This is also the highest point of the park at 1390m. We shall be visiting Lake Nyamunuka, which is mostly frequented by buffalo and elephants. Then we shall be off to Lake Kitagata that is at the bottom of this deep crater fed by salty hot-springs. We also visit the Kyemengo Crater on our way to the Baboon Cliff view at its western end. Finally, the route provides magnificent Rift Valley panoramas along the way, including the Rwenzoris, Lake George and its satellite Lake Kikorongo, the Kazinga Chanel and Lake Edward, and the rift's enclosing escarpments.







Accommodation | Day 6 & 7

**Buffalo Safari Lodge**

Lodge | Just outside Queen Elizabeth National Park

Relax on the secluded balcony of your en-suite thatched cottage at Buffalo Safari Resort, a small lodge that stands a short distance south of the Kazinga Channel as it bisects Queen Elizabeth National Park.



Buffalo Safari Lodge



Deluxe bathroom

**Activity Day 7**

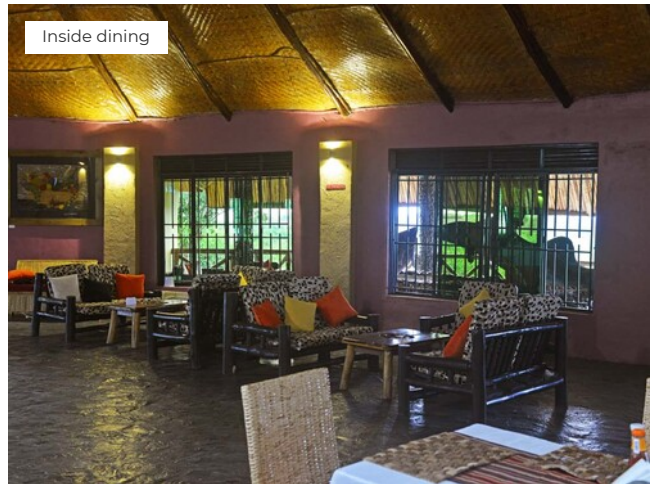
→ We set out early in the morning for a game drive in the northern part of the park on the Kasenyi Track in search of lions, elephants and solitary buffaloes. This is the best time for opportunities of viewing the cats in action owing to the vast population of Uganda kobs. We have an excellent chance to view just about every animal here at a very close range.

→ **Boat Trip, Kazinga Channel**

In the afternoon we will go for a launch trip along the Kazinga Channel This gives you the opportunity to view wildlife up close: hippos huff and spray at mere feet away from the boat, buffalo linger in the shallows. The shores of the channel is also home to an array of birds including pink-backed pelicans, pied and malachite kingfishers, saddle-billed storks, and many others.

**Meal Plan – Day 6 & 7**

→ Breakfast, Lunch & Dinner



Inside dining



African elephants drinking



# Bwindi Impenetrable National Park

Supporting almost half the world's mountain gorillas, Bwindi Impenetrable National Park is arguably the best place anywhere in the world to track these charismatic gentle giants through their misty forest home. But there is far more to this UNESCO World Heritage Site than just gorillas. The lush forest interior is also home to a diversity of other mammals, ranging from L'Hoest's monkey and chimpanzee to elephant and the yellow-backed duiker. A total of 350 bird species, 23 of which are unique to the Albertine Rift Valley, ensure that Bwindi ranks among East Africa's most rewarding bird-watching destinations.



Accommodation | Day 8

## Ichumbi Gorilla Lodge

Lodge | Just outside Bwindi Impenetrable National Park

We enjoy the bright and airy accommodation at Ichumbi Gorilla Lodge.



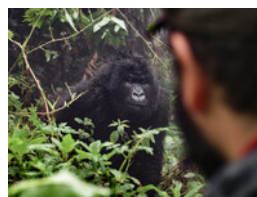
## Activity Day 8

→ Transfer by Road, Queen Elizabeth National Park  
After a lovely bush breakfast and morning game drive, the journey continues with an easy but scenic drive to Bwindi Impenetrable Forest and entry point for the famous gorilla treks. Arrive by late afternoon and settle into a 2-night stay at the charming lodge with amazing views across the forest.

**Transfer time; ±5 hours**

### Meal Plan – Day 8

→ Breakfast, Lunch & Dinner

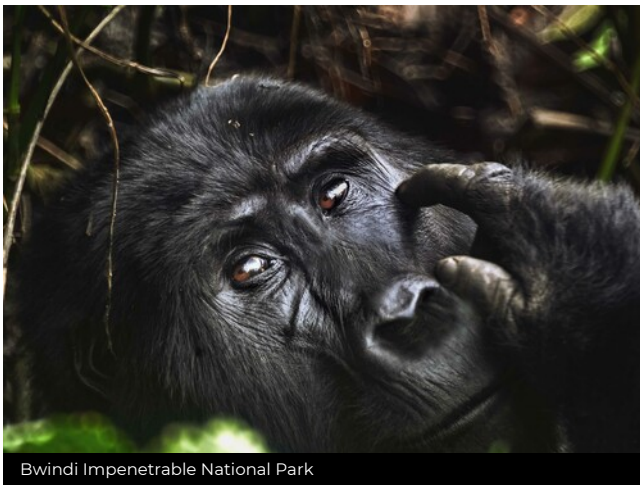


# Bwindi Impenetrable National Park

You get another chance to spend time in and around the magnificent Bwindi Impenetrable National Park.

## Mountain Gorilla Trekking, Bwindi Impenetrable National Park

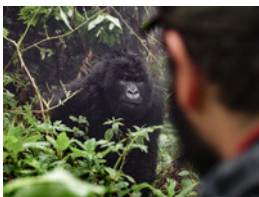
There are few more iconic wildlife experiences than trekking in search of mountain gorillas. These soulful creatures and the remarkable landscape they inhabit are worth every second that you walk through the forest to find them.



Bwindi Impenetrable National Park



Mountain Gorilla Trekking



## Activity Day 9

### Morning

#### → Mountain Gorilla Trekking, Bwindi Impenetrable National Park

Your driver shall be meeting you at your lodge to transfer you to the offices of Bwindi Impenetrable National Park for accrediting and gorilla trek briefing. The park officers will be giving you more information on what to expect when you trek the gorillas, how to behave while in their presence, the ecology of mountain gorillas and other primates in Bwindi, relationships between the gorillas and humans, Bwindi park management and the neighboring communities - there's just so much information you shall be receiving during the briefing. Usually, a local community women's group does traditional music and dance performances for those going to trek the gorillas in Bwindi.

Next, you will be allocated to a group of not more than 8 other tourists with whom you will be trekking the gorillas. Each group is allocated a family of habituated gorillas (also known as a gorilla group) that they track. You will be allowed to take all the photos, videos, and even selfies while with the gorillas. Rangers even guide you on the best angles to do this. They shall be assisting to remove any blocking shrubs and also guide the gorillas to the best spots you can view them. Being in the presence of a habituated group of mountain gorillas is just indescribable. These gentle giants will just continue carrying on with their daily routine, so unbothered by the presence of humans. There's all the fierceness you should expect from such an animal in its remote wild home but instead, you receive "gentleness".

### Meal Plan – Day 9

→ Breakfast, Lunch & Dinner





Accommodation | Day 9

### Ichumbi Gorilla Lodge

Lodge | Just outside Bwindi Impenetrable National Park

We return to enjoy the bright and airy accommodation at Ichumbi Gorilla Lodge.



Ichumbi Gorilla Lodge



Room exterior

## Optional for Day 9

### → Top up £555 for gorilla habituation experience, Bwindi Impenetrable National Park

Our intimate gorilla habituation experience allows you to accompany the Uganda Wildlife Authority's Bwindi gorilla habituation team for the entire day, allowing you to have a minimum of 4 hours in the presence of a mountain gorilla family.

Since regular permits only allow 1 hour, this is 4 times the amount of time spent up close with gorillas – more than any other safari operator! During this time

you will be able to experience the gorilla family as they wake up, hunt, patrol, play, fight, copulate, and breastfeed until they build their nests at bedtime.

The thrill of spending time with and observing these gentle giants is a rare and moving adventure that will leave you with long-lasting memories.

A maximum of only 4 visitors per day is being allowed to visit the gorilla habituation experience, compared to the 8 visitors on a normal Trek. One thing is certain, the Gorilla Habituation Experience is a one-of-a-kind, exclusive activity in which only a select few can participate. It is a learning experience, you learn from the researchers, trackers, rangers, and conservationists, who are all part of the Habituation Process.

**£588.00** Extra per person



Ichumbi Gorilla Lodge

# Mgahinga Gorilla National Park

You'll see Mgahinga Gorilla National Park long before you reach the entrance gate. This is because it protects the Ugandan portion of the Virunga Mountains, a chain of nine freestanding volcanoes visible from miles away in every direction. Rising to 4,507m on the border of Rwanda and the Congo, the Virunga range is home to more than half the world's mountain gorillas, and these can be tracked on foot in Mgahinga. You might also see buffalo, bushbuck, golden monkey and colorful range-restricted birds such as Rwenzori turaco, strange weaver and scarlet-tufted malachite sunbird.

## Golden Monkey Tracking, Mgahinga Gorilla National Park

This morning, we depart early to track golden monkeys on the forested slopes of the Virunga Mountains. Listed as Endangered on the IUCN Red List, these sociable monkeys feed mostly on bamboo shoots, but also sometimes roam further afield to forage on fruiting trees.



Accommodation | Day 10

**BirdNest Resort**

Resort

You'll be privileged to occupy a prime spot on the shore of Lake Bunyonyi when you stay at BirdNest Resort. Originally constructed in 1965, this historic thatch-topped four-story hotel is easily the chicest place to stay on the lake. It features large rooms that combine clean modernist lines with warm country decor, a lovely lakeside swimming pool, and a wide terrace restaurant serving an imaginative international menu.



## Activity Day 10

### → Golden Monkey Tracking, Mgahinga Gorilla National Park

After breakfast, we will trek the scenic Mgahinga Gorilla National Park and our target this morning will be to track a troop of golden monkeys.

Mgahinga is more famous for mountain gorillas but also the only place in Uganda where rare golden monkeys can be found. Apart from primates, the park has rare bird species, some endemic to the Albertine Rift area such as scarlet-tufted malachite sunbird, mountain yellow warblers, Rwenzori batis, Rwenzori turaco, Archer's robin-chat, and many more.

### → Transfer by Road, Mgahinga Gorilla National Park to Lake Bunyonyi

*Transfer time; ±2 hours*

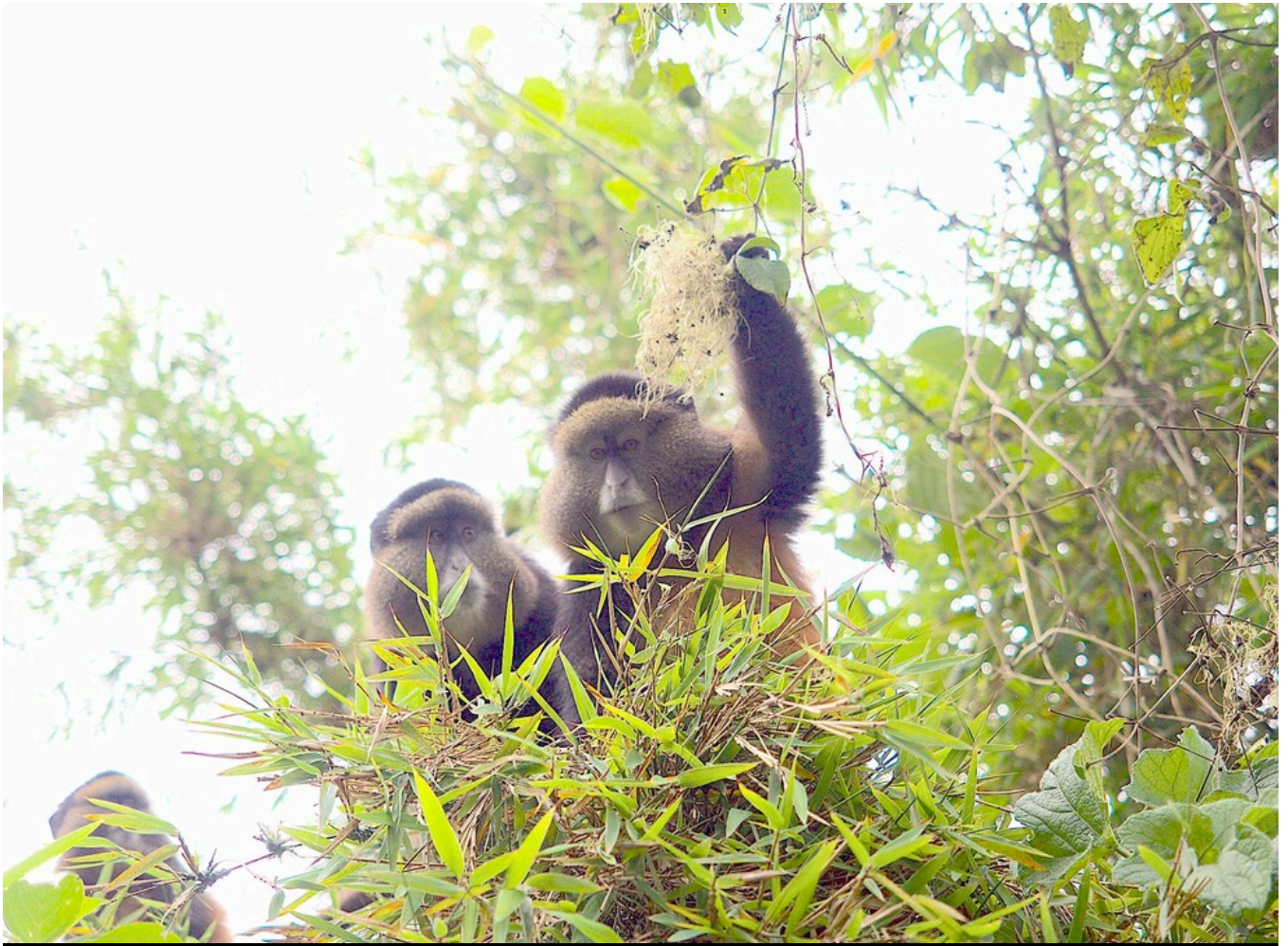
### Meal Plan – Day 10

→ Breakfast, Lunch & Dinner



Golden monkey in bamboo forest





Golden Monkey Tracking

# Lake Bunyonyi

Dammed by a lava flow 8,000 years ago, Bunyonyi is a flooded river valley that extends for 25km from north to south but is nowhere more than 5km wide. The absence of hippos and crocodiles means swimming is safe; it's also resulted in an unusually dense population of otters, which are often seen from the shore. A great beach chill-out destination, Bunyonyi also offers plenty of walking and kayaking opportunities to keep active travelers busy.

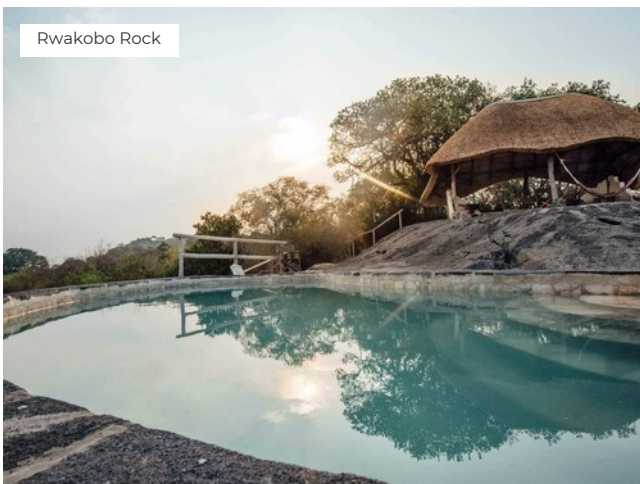


Accommodation | Day 11

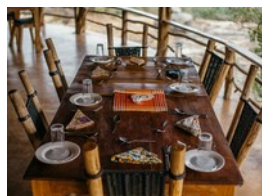
## Rwakobo Rock Lodge

Lodge

Situated immediately outside the Nshaara Gate of Lake Mburo National Park, Rwakobo Rock is an intimate hilltop lodge offering tremendous views across the plains to its south. The ecofriendly thatch-roofed cottages have solar-powered lights and geysers, and are designed to offer maximum privacy while blending artfully into the rocky natural landscape.



Rwakobo Rock



## Activity Day 11

→ A sweet taster of Lake Bunyonyi activities: Slide in a dugout canoe over the Lake Bunyonyi surface to visit its lushest island, Bushara, and enjoy a nature walk there. A short tour around the forested peninsula will show you an ingenious submerged swimming pool built for teaching life-saving skills, grass-thatched huts erected for volunteers, a rural primary school and many other things.

You will then canoe to Bushara, a notable island covered with a eucalyptus forest. Nowadays it accommodates travellers but once upon a time it was home to doctors working at the Bwama leprosy colony. There is a path loop next to the island shore, an inviting route for nature walk around Bushara, with interesting vegetation and birdsong in the air. You will learn a lot about how the Bakiga used to utilise – and still use – the herbs and other fruits of nature. Knowing which plants to pick for brushing teeth or personal hygiene may actually be handy, right?

The walk will give you a nice view of Bwama Island where secondary students learn in the old leprosy colony structures, and of Akampene or Punishment Island, the notorious destination to dump pregnant yet unmarried girls.

→ Transfer by Road, **Lake Bunyonyi to Lake Mburo National Park**  
**Transfer time; ±4 hours**

### Meal Plan – Day 11

→ Breakfast, Lunch & Dinner



## Final day with us

As your safari in Uganda ends, it's time to look back on your trip with us and enjoy the incredible memories we're sure you have.



### Activities Day 12

#### Early Morning

→ It's time for you to go on a guided game drive in **Lake Mburo National Park** early this morning. This has often been a good chance of seeing hyenas coming back to their dens, hippos walking back to the water, you will see buffalo, zebra, impala, and topi, and with a bit of luck maybe even a sitatunga, an antelope rarely seen living in the papyrus swamps.

→ Transfer by Road, **Lake Mburo National Park** to **Entebbe International Airport**  
**Transfer time; ±4 hours**

#### ✂ Meal Plan – Day 12

→ Breakfast & Lunch



## Gorillas and Wildlife Safaris

Since 2008, Gorillas and Wildlife Safaris has been the preferred tour agent for 1000s of visitors to East Africa, originating from all parts of the world. We meticulously design and operate unique and memorable lifetime safari experiences for Uganda, Rwanda, Kenya, Tanzania and DRC. It is no wonder that we have been awarded many times, among other the TripAdvisor Certificate of Excellence for 5 times and now in the Trip Advisor Hall of Fame.

With our highly skilled safari/holiday experience designers we ensure everyone contacting us gets an exciting time with us right from 1st contact, through the safari package designing and while enjoying the safari experience.

The vehicles should offer maximum comfort and at the same time one of the best safari experiences for our guests. Our safari vehicles have large sliding windows and canopies, which offer our guests excellent views and fantastic opportunities to take photos undisturbed during the safari.

Regular service checks are very important to us to guarantee constant reliability. Your safety is our top priority.

### Contact Us

**Address** Plot 2, Portal Road, Entebbe.  
**Country** Uganda  
**Phone** +256 772 979 425  
**WhatsApp** +256 772 979 425  
**Email** [info@gorillasandwildlifesafaris.com](mailto:info@gorillasandwildlifesafaris.com)  
**Website** [www.gorillasandwildlifesafaris.com](http://www.gorillasandwildlifesafaris.com)

Contact person: **Ivan Wassaaka**

**Member of:**

- Association of Uganda Tour Operators
- Uganda Tourism Board

“Take only memories,  
leave only footprints”

– Chief Seattle

## Colofon

**Copyright Text** Gorillas and Wildlife Safaris & SafariOffice

**Copyright Images** SafariBookings.com, Ariadne Van Zandbergen, Rod Waddington, snanglebarf, USAID Biodiversity & Forestry, Laurent de Walick, Gorillas and Wildlife Safaris & SafariOffice  
[View](#) copyright per photographer



*Ivan Wassaaka from Gorillas and Wildlife Safaris used the SafariOffice App to create this unique proposal especially for you.*