



29 November – 1 December | Frankfurt, Germany

# Meeting Rooms

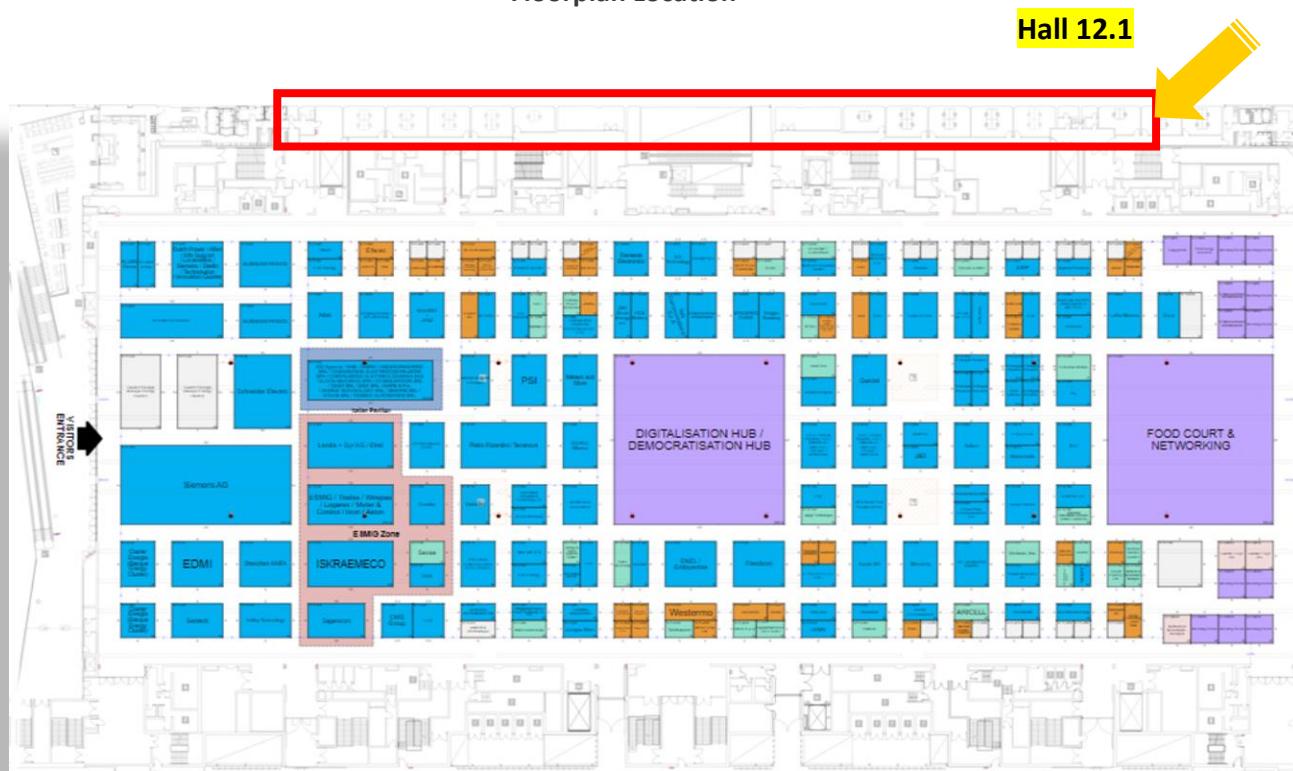


@Enlit\_Europe and be part of the discussion by using #EnlitEurope  
<http://enlit-europe.com/>

## Meeting Rooms - Hall 12 Level 1

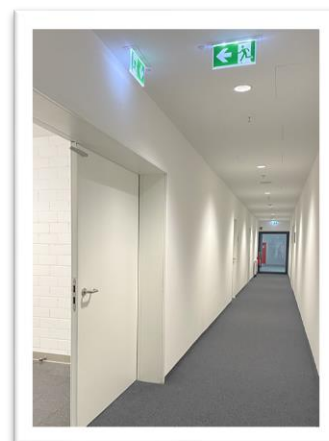
These meeting rooms are located on the first floor of Hall 12 reachable via stairs or elevator.

### Floorplan Location



Updated 1082022

### Meeting rooms Large:



*\*Picture shown are examples of the rooms. Please note that they may vary due to availability.*



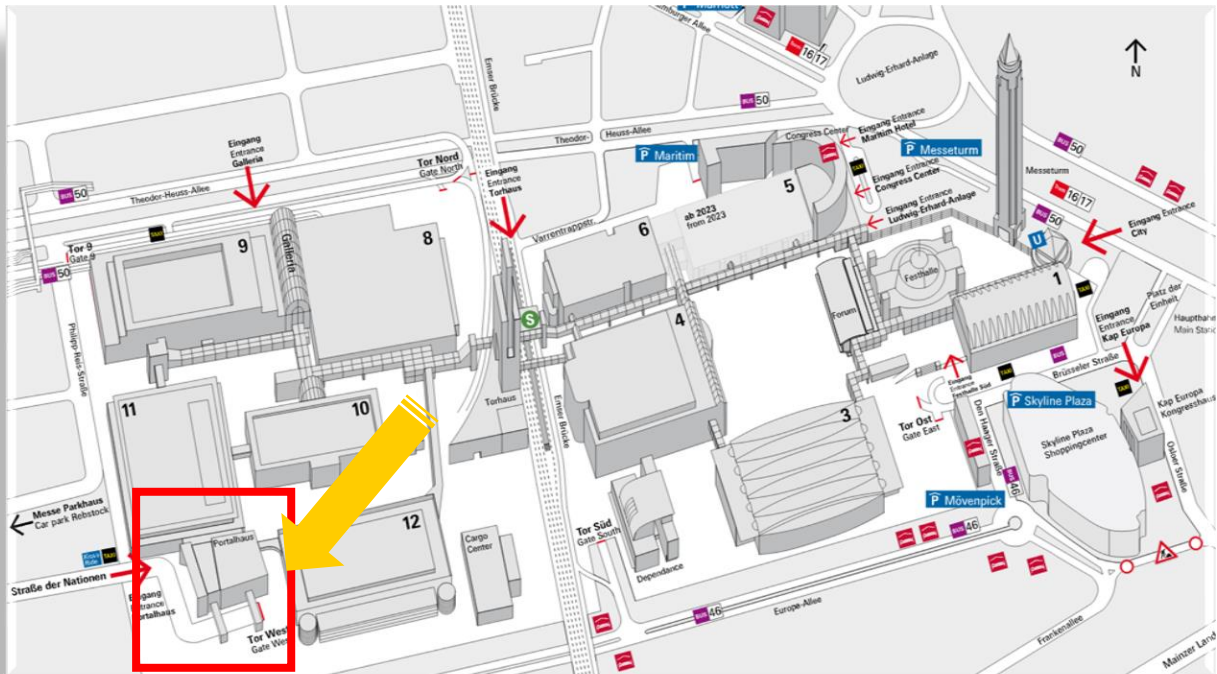
@Enlit\_Europe and be part of the discussion by using #EnlitEurope  
<http://enlit-europe.com/>

## Rooms – Portalhaus – Levels 1, C and VIA

These rooms are located at Portalhaus on the first and C floors and at the VIA Mobile covered moving walkway  
Please note that the Portalhaus is located right next and connected to Halls 11 and 12.

### Location

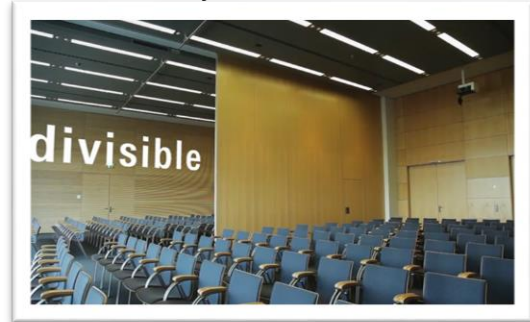
#### Portalhaus



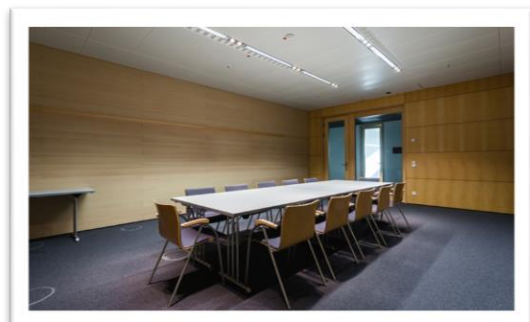
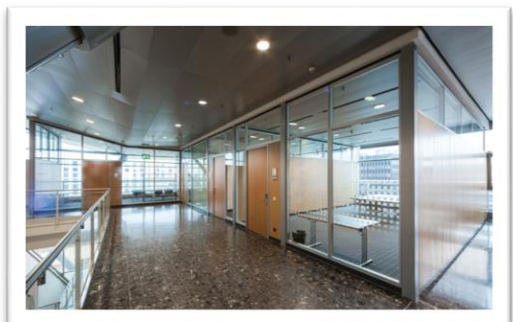
#### Conference rooms Large:



#### Hall: as two conference rooms combined



#### Meeting rooms Small:



\*Picture shown are examples of the rooms. Please note that they may vary due to availability.



@Enlit\_Europe and be part of the discussion by using #EnlitEurope  
<http://enlit-europe.com/>

### Overview pricing:

Hall	Setup					Price (excl.VAT) 3 days
<b>12.1</b>	Category	Theater	Boardroom	Class/ Parlament	U shape	
<b>Lapis</b>	Meeting room, Large	30	20	18	17	€ 5,000.00
<b>Jaspis</b>	Meeting room, Large	30	20	18	17	€ 5,000.00
<b>Smaragd</b>	Meeting room, Large	30	20	18	17	€ 5,000.00
<b>Saphir</b>	Meeting room, Large	30	20	18	17	€ 5,000.00
<b>Rubin</b>	Meeting room, Large	30	20	18	17	€ 5,000.00
<b>Achat</b>	Meeting room, Large	30	20	18	17	€ 5,000.00
<b>Amethyst</b>	Meeting room, Large	30	20	18	17	€ 5,000.00
<b>Aventurin</b>	Meeting room, Large	30	20	18	17	€ 5,000.00
<b>Jade</b>	Meeting room, Large	30	20	18	17	€ 5,000.00
<b>Onyx</b>	Meeting room, Large	30	20	18	17	€ 5,000.00
<b>Opal</b>	Meeting room, Large	30	20	18	17	€ 5,000.00
<b>Pyrit</b>	Meeting room, Large	30	20	18	17	€ 5,000.00

Hall	Setup					Price (excl.VAT) 1 day
<b>PH.VIA</b>	Category	Theater	Boardroom	Class/ Parlament	U shape	
<b>Frequenz 1</b>	Conference room, Large	142	44	49		€ 4,500.00
<b>Frequenz 2</b>	Conference room, Large	142	44	49		€ 4,500.00
<b>Frequenz 1+2</b>	Hall, Medium	299	68	140		€ 8,000.00
<b>PH.1</b>	Category	Theater	Boardroom	Class/ Parlament	U shape	
<b>Sequenz</b>	Meeting room, Large	35	14			€ 2,500.00
<b>Transparenz 1</b>	Conference room, Large	142	44	49		€ 4,500.00
<b>Transparenz 2</b>	Conference room, Large	142	44	49		€ 4,500.00
<b>Transparenz 1+2</b>	Hall, Medium	299	68	140		€ 8,000.00
<b>PH.C</b>	Category	Theater	Boardroom	Class/ Parlament	U shape	
<b>Lux</b>	Meeting room, Small	20	14			€ 1,750.00
<b>Lumen</b>	Meeting room, Large	35	18			€ 2,000.00
<b>Candela</b>	Meeting room, Large	35	14			€ 2,000.00
<b>Focus</b>	Meeting room, Large	35	18	15		€ 2,000.00
<b>Prisma</b>	Meeting room, Large	54	24	25		€ 3,000.00

#### Included in the rooms:

- Standard furniture (tables and chairs)
- daily cleaning

#### Would you like to order extras services for your Meeting Room?

Please contact [enlit@4foreverything.com](mailto:enlit@4foreverything.com).

For catering please contact [delivery@accente.com](mailto:delivery@accente.com).

Pricing per room excluding VAT.

The duration of use commences at 8:00 a.m. and ends at 7:00 p.m. on 29 and 30 November and at 8:00 a.m. and ends at 4:00 p.m. on 1<sup>st</sup> December. Additional services for Catering, AV, Internet, and setup changes are available at an additional cost. Meeting rooms are available for **exhibiting companies** during **Enlit Europe 2022**.

For any questions, please contact us via [exhibitor@enlit-europe.com](mailto:exhibitor@enlit-europe.com).



@Enlit\_Europe and be part of the discussion by using #EnlitEurope  
<http://enlit-europe.com/>