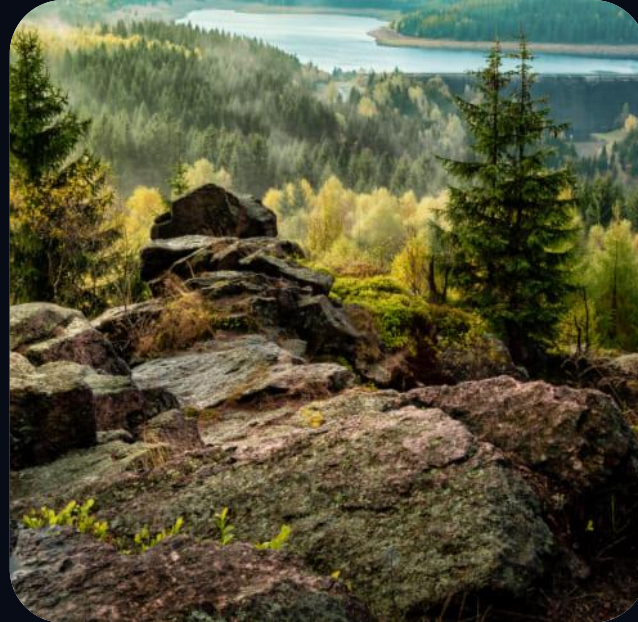


iNex

Artificial intelligence
for efficiency



Ai
iNex



Contents

Presentation of iNex

Our team

Our proposition

Our added value

Our platform : iNex Sourcing

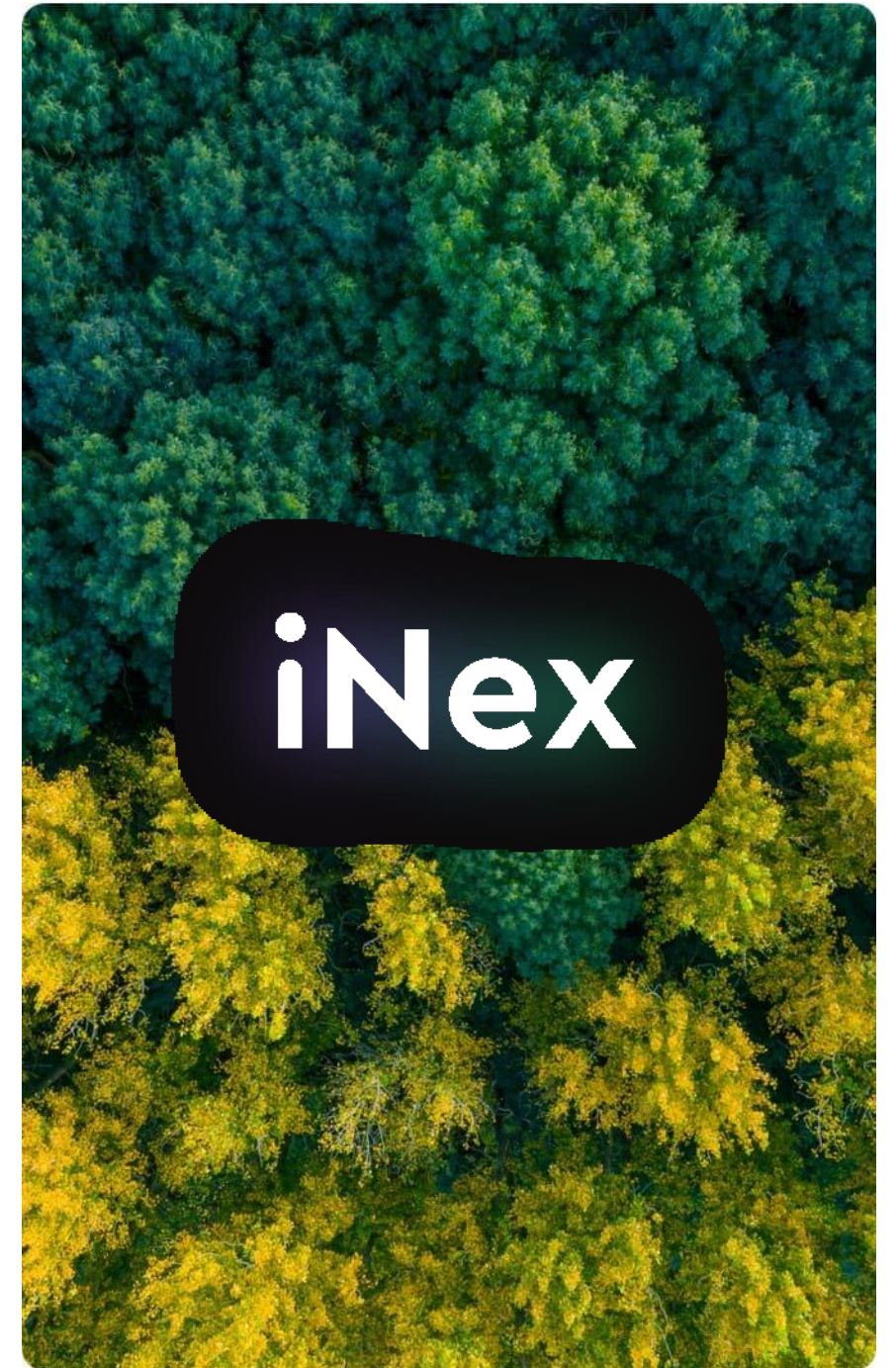
Our traceability solution Feedback(k)s

Let's work together

Next step : The workshop

Our customers & references

Contact



Introduction

Created in 2012, iNex is initially a sustainable development **consulting firm** that assists local authorities and industrialists to **develop waste-related investment policies**.

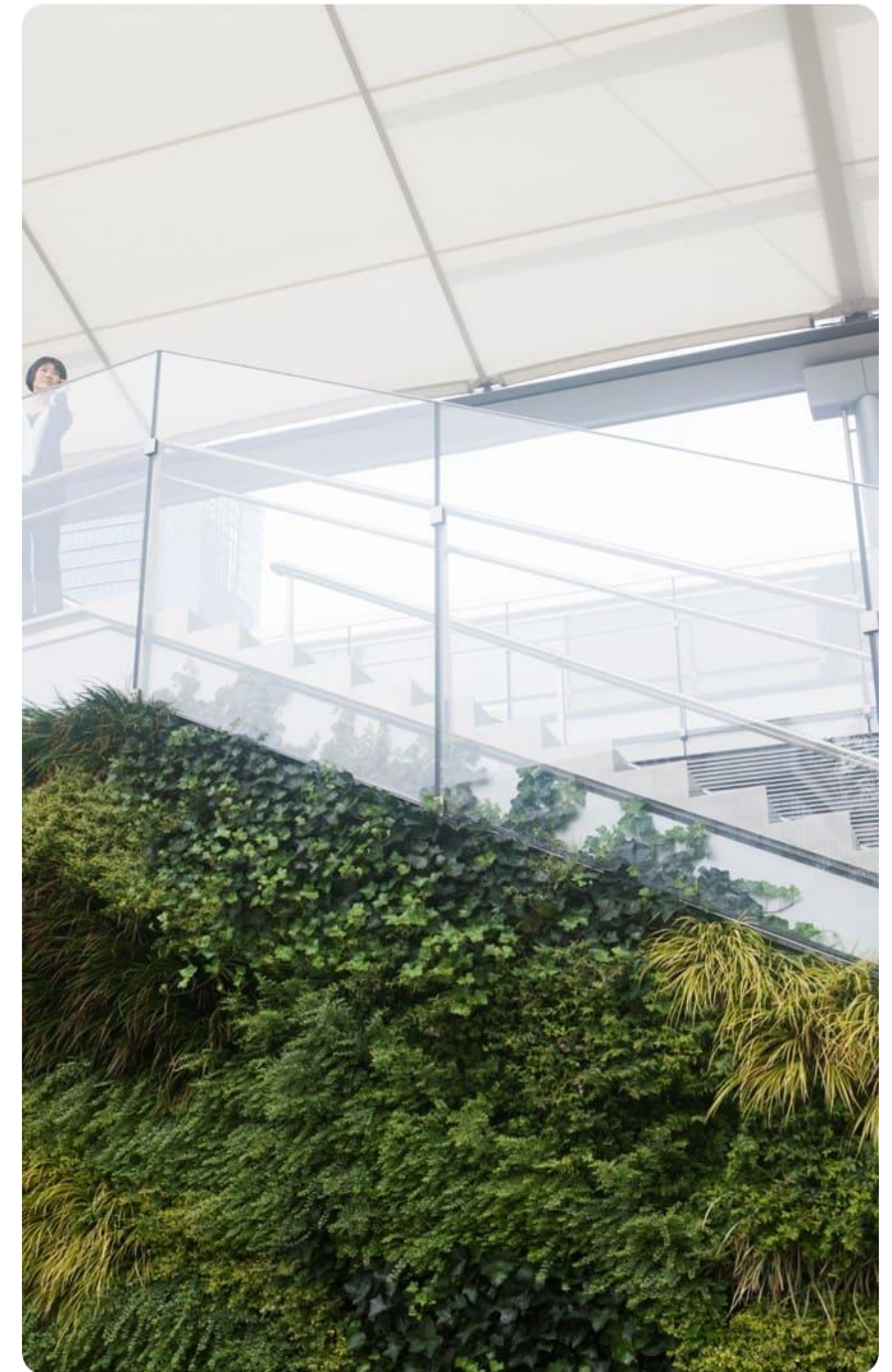
Taken over in 2018 by Olivier Gambari and Pierre Beuret, **iNex is becoming a technological company that offers digital solutions to industrialize strategic studies in the world of renewable energy, waste and raw material substitution on precise topics** : plastic, paper, cardboard, glass, biogas, biomethane, bio-GNV, photovoltaic, land, strategic materials.

iNex **provida a solution based on the expertise of a complementary team and a data aggregation and predictive technology designed in partnership with the Ecole Polytechnique de Paris**.

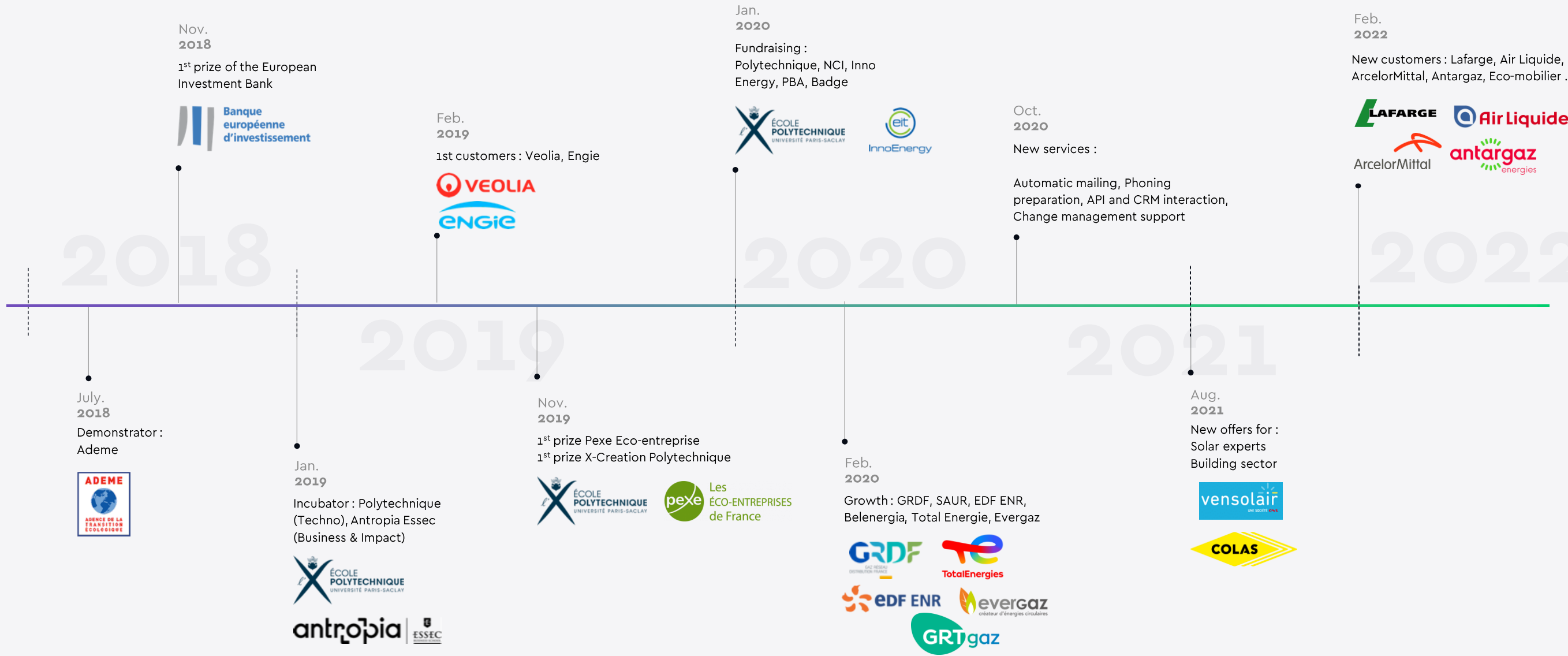
Based on studies from 8 years of consulting and more than 5,000 data sources, **iNex Sourcing is the flagship tool used by the strategy departments of industrialists** (Chanel, Soprema, Solvay), **energy companies** (Total Energies, Engie, GRDF, Naskeo, Evergaz) and **recyclers** (Veolia, Suez, Nicollin).

In 2020, with a strong technology validated by the main market players, iNex raises 1M Euro from Inno Energy, Nci, PBA and Badge to accelerate its growth.

2022 marks a new phase with an acceleration of its activity and **a new capital increase to develop new territories : Europe, US & Canada**



History



Our team



Tech, Skills, Data

iNex is the connection of complementary talents who have decided to contribute through technology to the ecological transition.

A complementary team



Olivier Gambari

CEO & Founder



Pierre Beuret

COO & Founder



Benoit de Menthère

CDO



Philippe Huger

Mentor



But also an operational team

4

Data Analyst

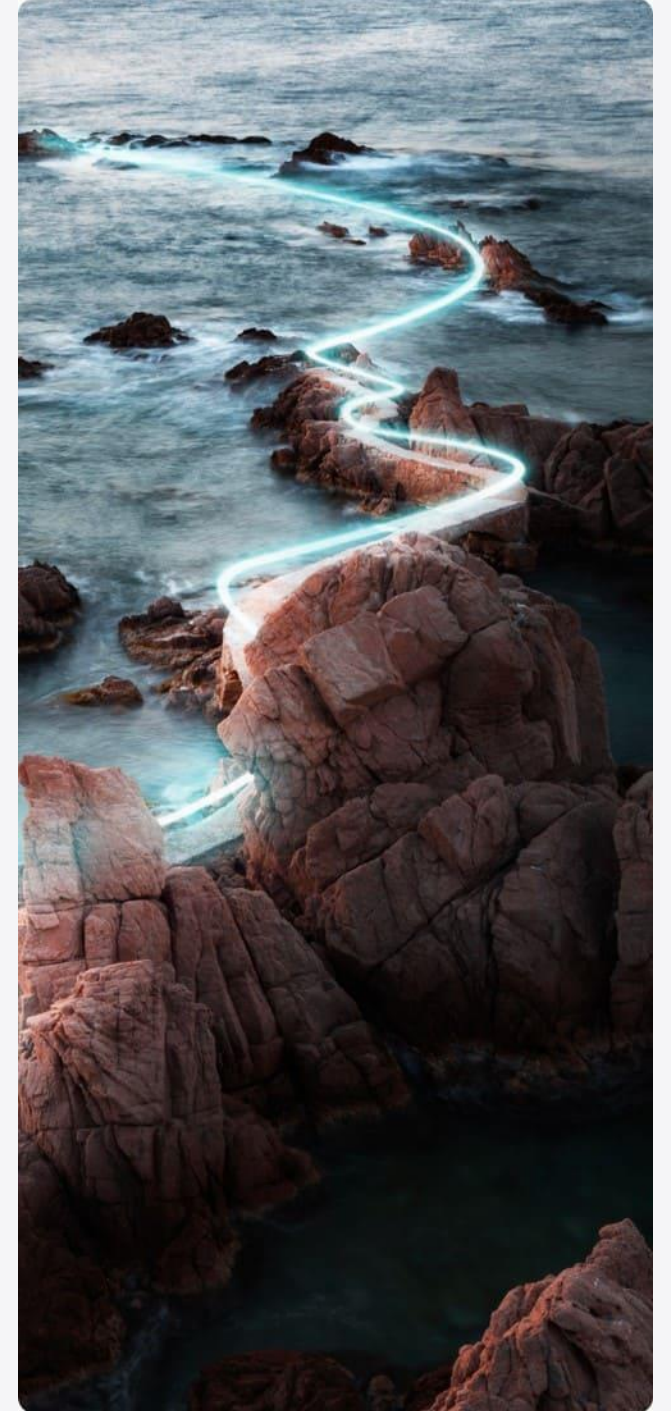
3

Data Scientist

2

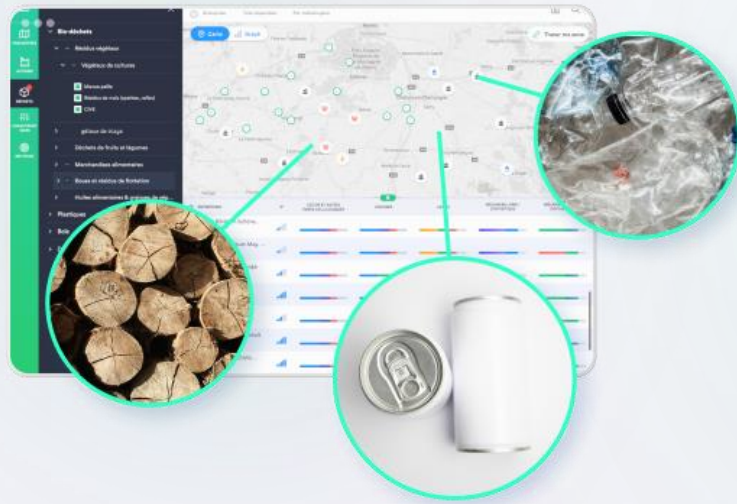
Business developer

Our offer



What is iNex doing ?

Sourcing



Ressources

Recycling
solutions

Tracking



Measuring



Expand the circular economy in your business

iNex helps you to expand the circular economy into your business. If you want to substitute raw materials, find a recycled material, recycle your waste in a better way or become your own recycler, iNex is the right partner.

Thanks to our solution to detect the right partners, to ensure the logistic organization and the quality follow-up.

1) Find your partners to source material or to recycle

- Mapping of mobilizable deposits and outlets according to your strategic criteria
- Visualize the key data of a territory : outlets, competitors, recycle material
- Indicators allowing you to carry out precise market studies in a few clicks
- Obtain qualified contacts to approach them



2) Organize your recycling chain with your suppliers and ensure the traceability of quality throughout the supply chain.

For your suppliers

- Trigger plastic removal
- Online management

For your teams

- Manage your recycler
- Manage waste streams
- Automate exchanges

Connect data

- Connect our custom API to your TMS to manage transport
- Offer our customised API to your suppliers who already have an information system

Measure your impact

- Follow all your action in a dashboard
- Reach your goals with a precise measure technology linked to your information system

iNex will

ADVISE

Propose innovative solutions from similar experiences in material sourcing and in digital solutions

CUSTOMIZE

Customize the ergonomics and design of our solution from your functional needs

SUPPORT

We support you during the entire process, ensure assistance in the use of interfaces and ensure experience sharing during the implementation of industrial symbiosis



HOST

Host the digital solutions and ensure data security

MAINTAIN

We offer a long-term corrective and application maintenance

CONNECT

Connect our tools with your technical environment: CRM, ERP or databases via our API

Use case of Chanel

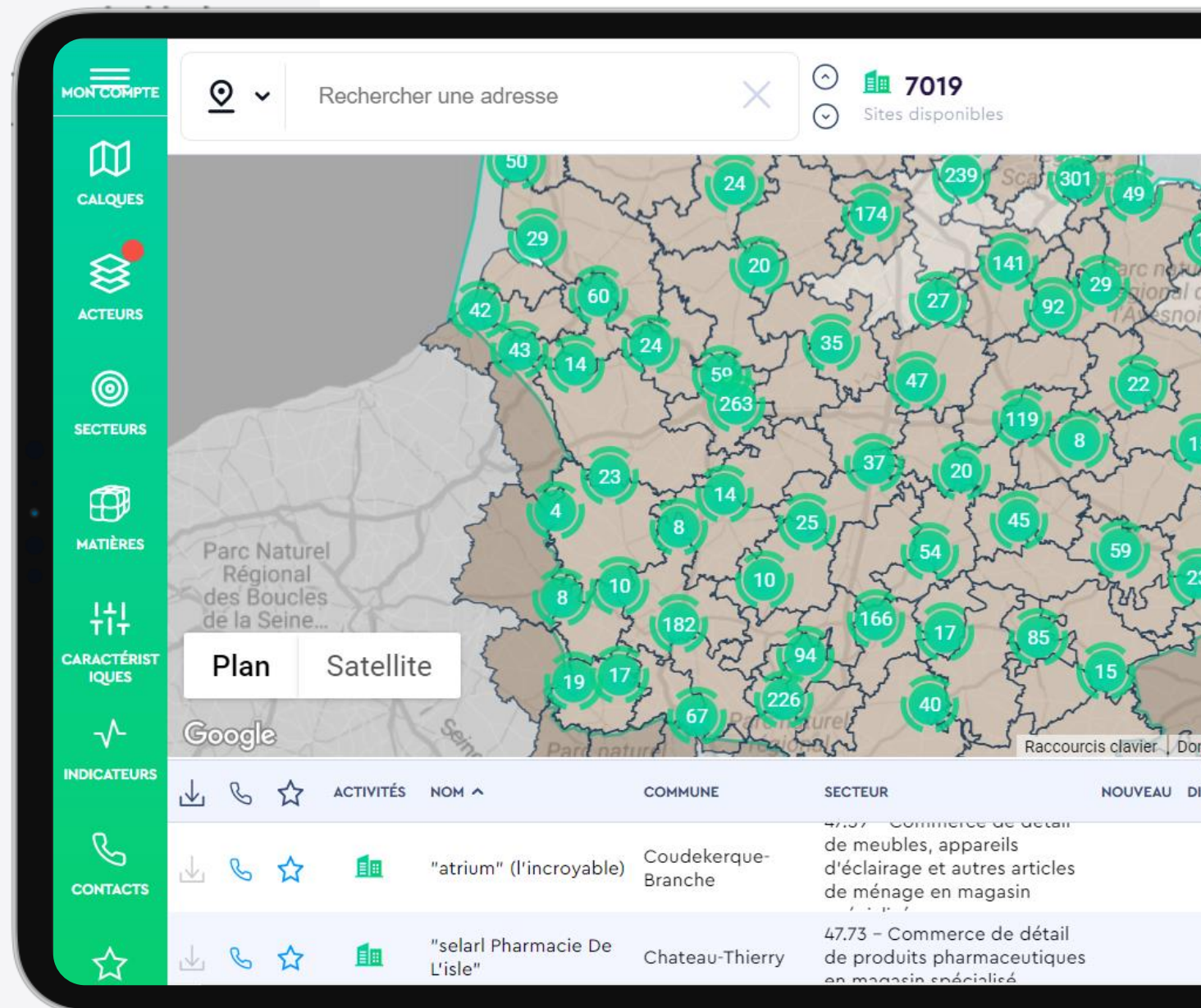
Inex supports **Chanel** achieving their environmental objectives: **stop waste incineration, substitute raw materials by recycled waste and reduce their CO2 emissions.**

Chanel uses the Inex Sourcing tool within a 50km perimeter in their activity zone in order **to obtain in a few clicks a study** of the possible outlets around their production plant.

Chanel access to: **recyclers, collectors, similar waste producing companies as well as the potential quantity of mobilizable material.**

With the support of iNex consulting and the tools iNex sourcing, **Chanel was able to create synergies between 12 industrialists on their territory.** (BASF, Colgate, Unilever ...)

The symbiosis is growing every month and become a famous and inspiring use case in France and has **an ambition of 10.000t of PET stickers to be recycled every year** within 2025.



Use case of Soprema

Soprema is supported by iNex **to become its own recycler**. They created their recycle plant and they need to source paper glassine waste.

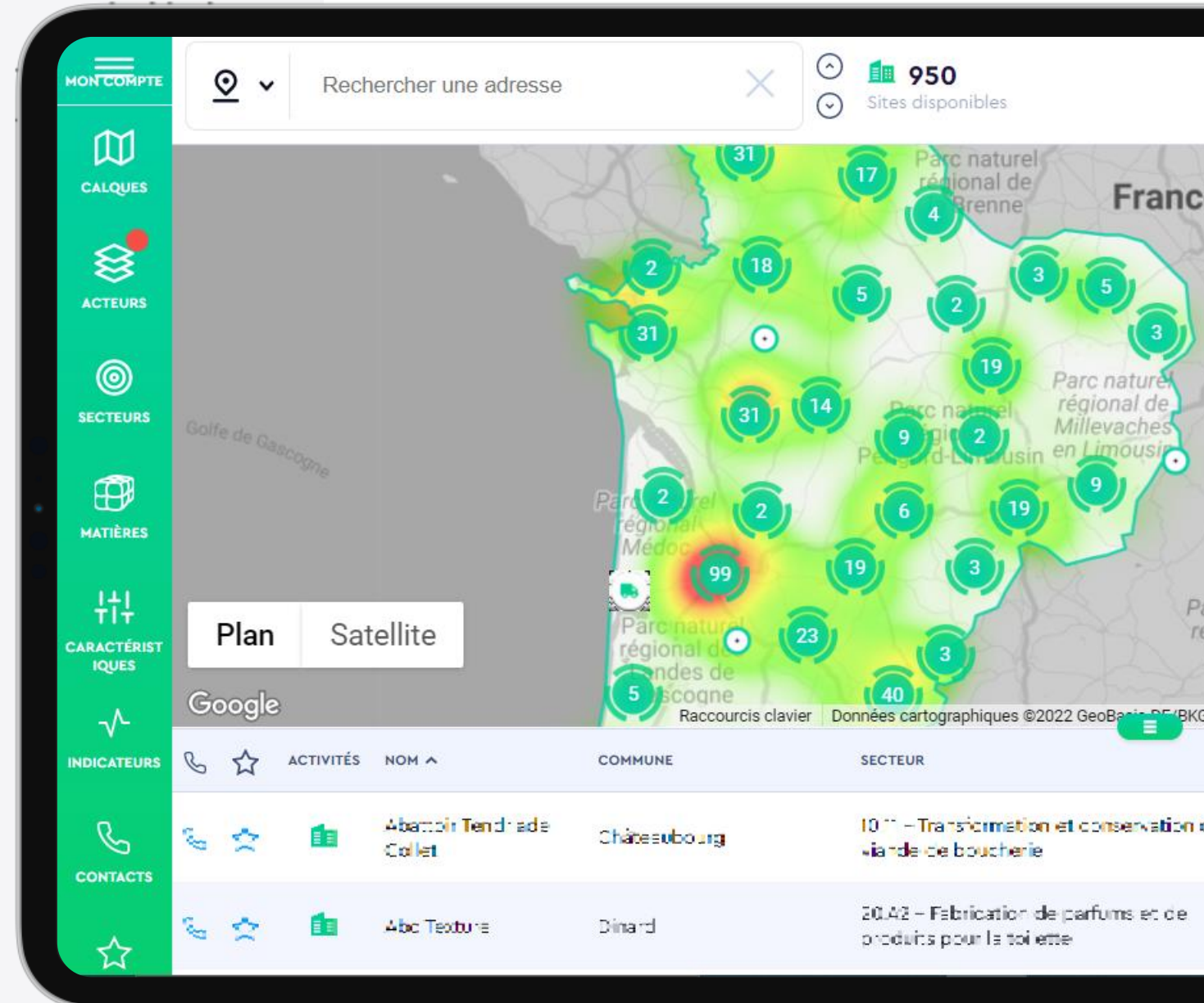
Thanks to iNex consulting and iNex sourcing, **Soprema is able to source the paper glassine waste in France to substitute the raw materials that are used in their product**.

The iNex solution allows Soprema to **visualize in a few clicks the whole potential of these territories : potential of quantity to be mobilized, producing companies, companies concerned** as well as **the quality and the quantity of paper glassine waste produced**.

In concrete terms, Soprema has source :

- **770 producing companies** for more than **15.000 tons of waste**
- **85 professional waste collectors** under public contract

Several Soprema collaborators use our solution **to promote the recycling of paper glassine** thanks to a precise technical analysis from our solution.



Return on Investment



For each year



1000 t
of material recycled

700 t
of CO2 avoided



€ € €
€ € € **200 000€**
saved



For each year



15 000 t
of material recycled

70 000 t
of CO2 avoided



€ € €
€ € € **420 000€**
saved



For each year



300 000 t
of material recycled

100 000 t
of CO2 avoided



€ € €
€ € € **5 000 000€**
saved

Interface, data and features

Our interface summarizes our experience with companies that want to start ambitious circular economy project. iNex sourcing is designed to provide strategic data and technical analysis allowing you to invest serenely to source better material, recycle in a better way or to become your own recycler.

You will find in iNex sourcing :

List of companies in the defined area

- Company information: Company name, company register, Address, Activity sector (NACE), GPS coordinates

Qualification of waste

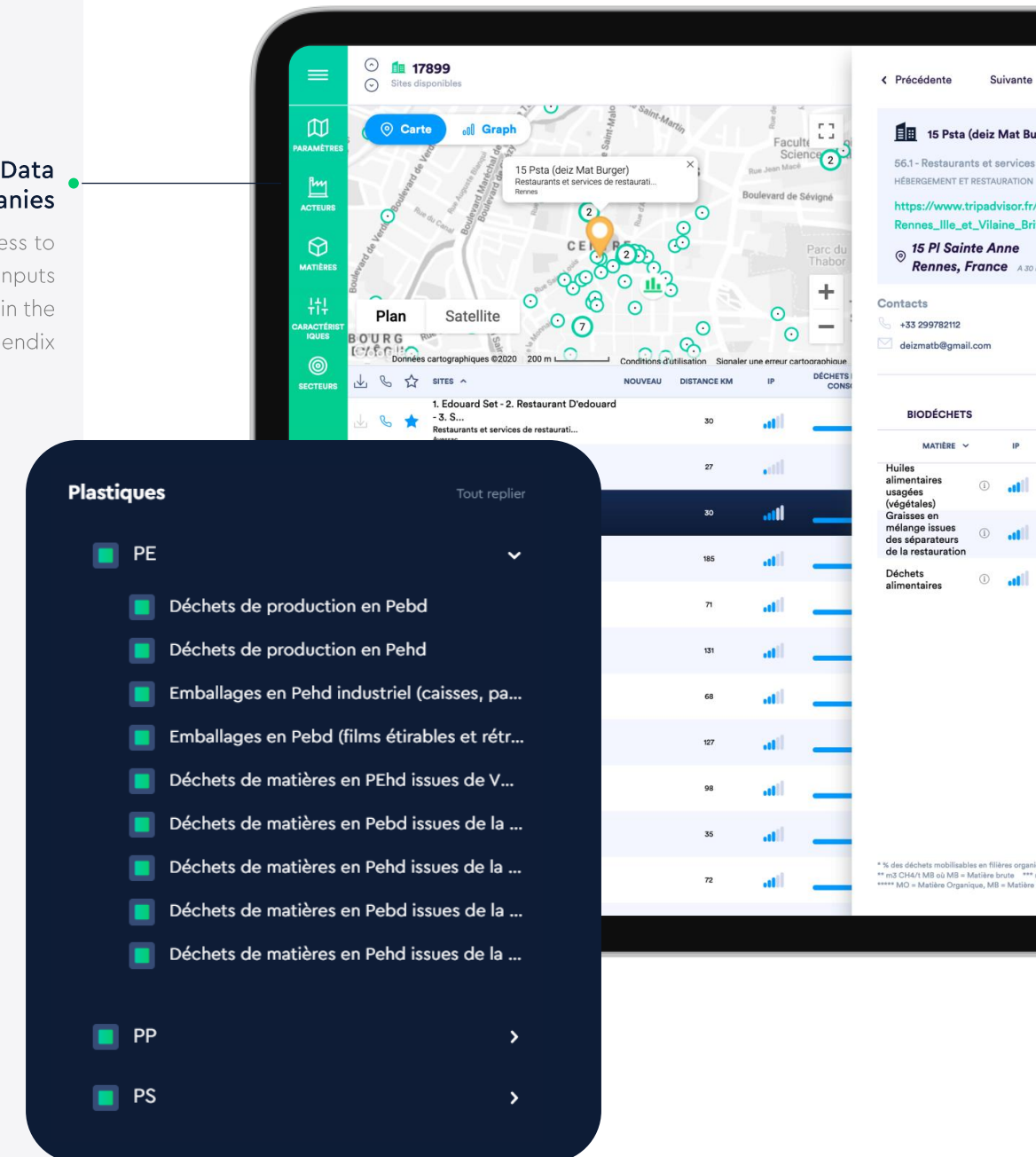
- **Nature of waste** : Detailed typology based on the improved waste nomenclature
- **Characteristics** : rigidity, coloring of the material, transparency, presence of external undesirables, presence of packaging, seasonality
- **Unit** : Tonnage of materials generated per year

In summary, the functionalities are the following:

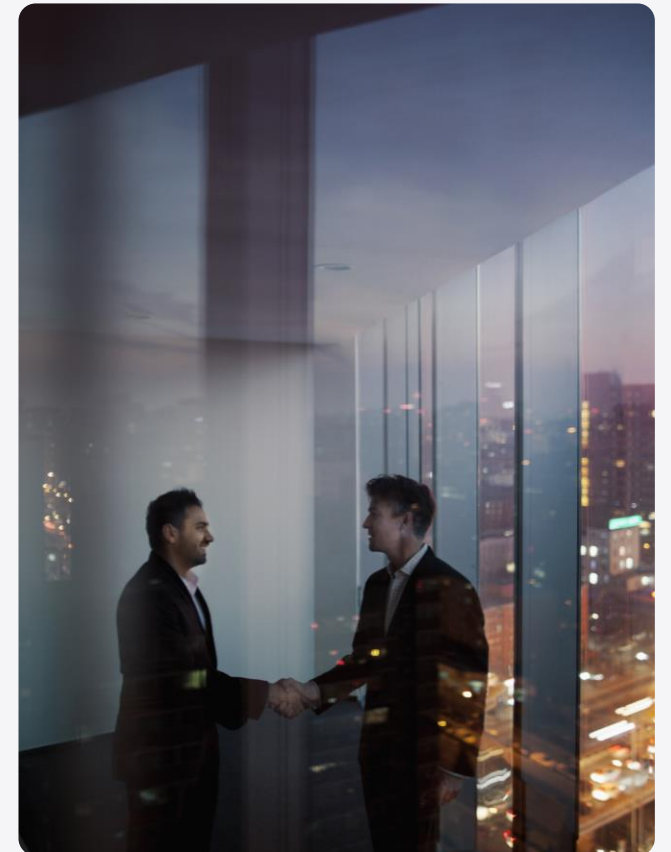
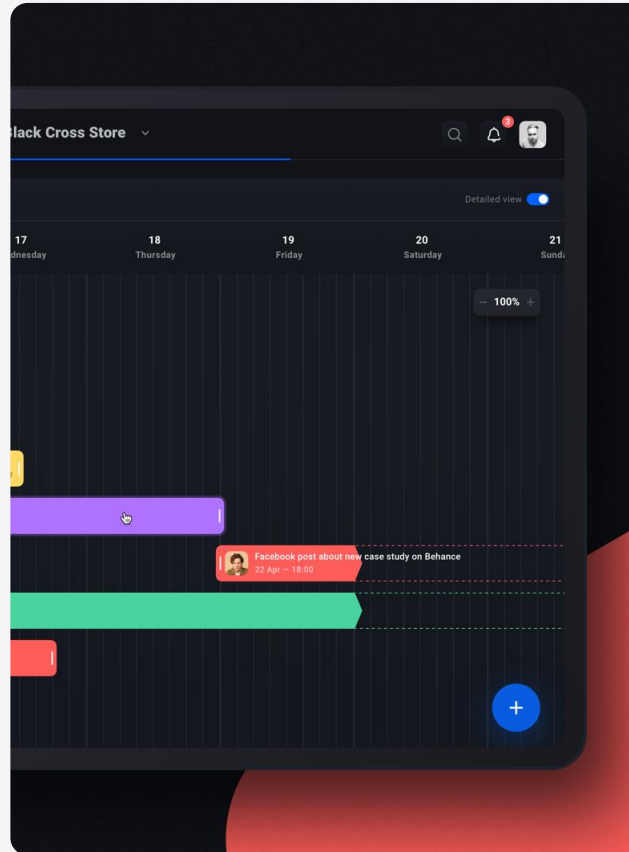
- Statistics by sectors of activity / Actors / Collectors ...
- Classification and sorting of companies according to your characteristics
- Mapping of actors / satellite view
- Heat map showing the main areas of interest and reactivity according to your parameters
- Filters by actors
- Display of outlets and competition
- Indicators allowing you to sharpen your canvassing, to be defined during the framing
- Tool to measure the distance between a compagny and collection areas, etc...

Data companies

You have access to contacts and inputs
More details in the appendix



Our add-value



iNex values

We offer you a customizable and agile digital solution to realize your ecological transition in all serenity: :

1 Expertise

Leader in qualification of ressources

- 12 years of support to industrialists in their low-carbon strategy in Europe, India and the USA
- Quantitative, qualitative and geolocalized knowledge of the resources of a territory
- Solid chemical knowledge: replicable on any type of material, anywhere in the world
- Customization of each project and support

2 Technology

An innovative and unique technology

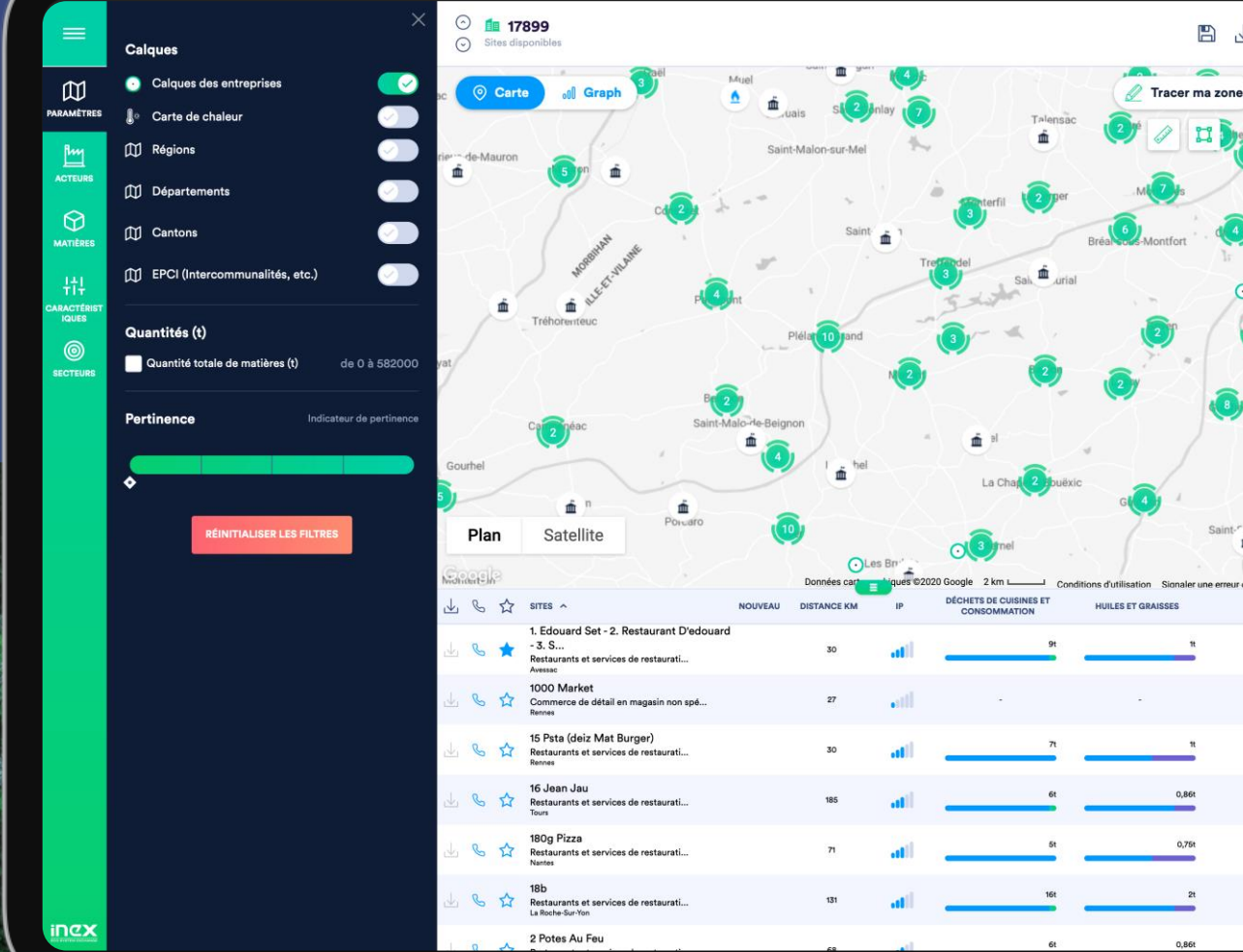
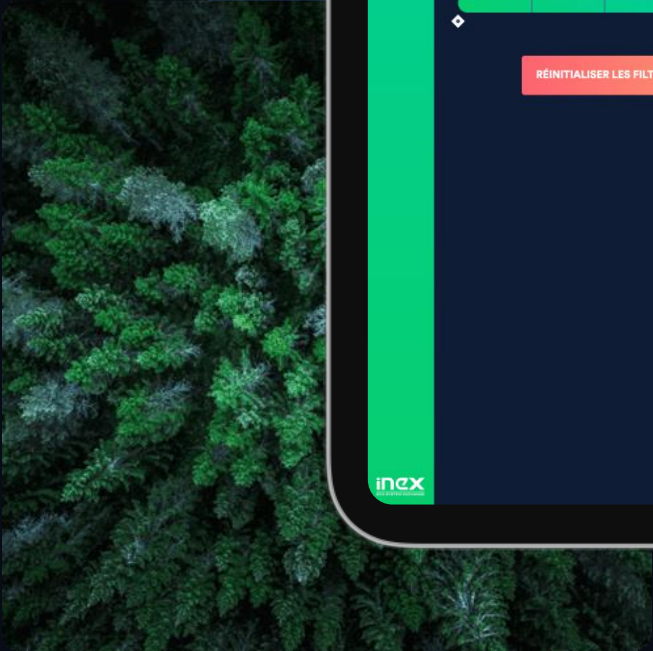
- A predictive technology developed at Polytechnique, the leading French engineering school
- A technology that relies on artificial intelligence: massive data collection, automatic processing and real-time updating of data
- An universal technology

3 Agile startup

A multidisciplinary and complementary team

- Experts in materials, data, technology and business to advise you
- 10 young, interconnected and reactive people
- A total support of your activity: from sourcing, to the contact, to the contractualization and the traceability of your inputs

Our platform iNex Sourcing



Our technology

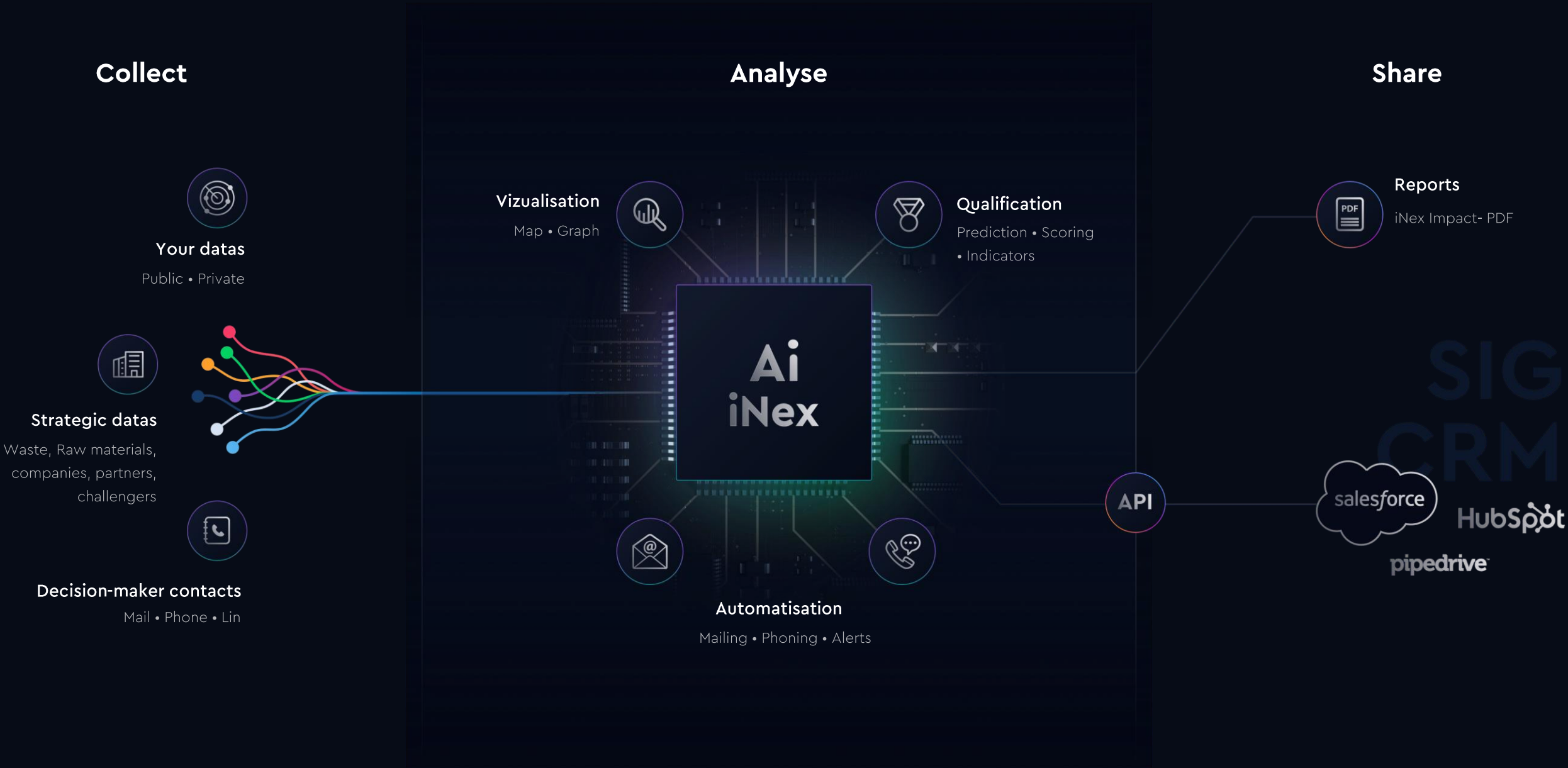
Predicting the quantity,
quality and type of waste
produced or the needs in
raw material by a company
across USA.

We aggregate more than
5.000 data sources !



iNex sourcing

From data to action



Select the relevant firms

Plastic producers, Incinerators, Waste sorting center,

Filter on characteristics

PARAMÈTRES

ACTEURS

MATIÈRES

CARACTÉRISTIQUES

SECTEURS

Producteurs

Entreprises productrices

Communes (Ménages)

Collecte sélective sur l'EPCI des bio-déchets pour les particuliers

Fin Contrat Collecte_Année

Fin Contrat Collecte_Estimation

Collecteurs

Collecteurs de déchets ménagers sous contrat public

Collecteurs de déchets professionnels sous contrat public

Transformateurs

Composteurs

Bio-Déconditionneurs

Incinérateurs

17899 Sites disponibles

Carte

Graph

Plan

Satellite

SITES

NOUVEAU

DISTANCE KM

IP

DÉCHETS DE CUISINES ET CONSOMMATION

HUILES ET GRAISSES

BIODÉCHETS SPÉCIFIQUES

1. Edouard Set - 2. Restaurant D'edouard - 3. S... Restaurants et services de restaurati... Avesac 1000 Market

Residence De Letang Hébergement médicalisé Marcellie Robert

27

17t

2t

16 Jean Jau Restaurants et services de restaurati... Tours 185

180g Pizza Restaurants et services de restaurati... Nantes 71

18b Restaurants et services de restaurati... La Roche-Sur-Yon 131

2 Potes Au Feu Restaurants et services de restaurati... Nantes 68

201 Forest Avenue Restaurants et services de restaurati... Saint-Hilaire-De-Riez 127

2lmc Restaurants et services de restaurati... Le May-Sur-Evre 98

2lpr (domino's Pizza) Restaurants et services de restaurati... La Guerche-De-Bretagne 35

2m Restaurants et services de restaurati... Chateau-Gontier-Sur-Mayenne 72

2n (burger King)

Visualize the distribution of deposits in a territory

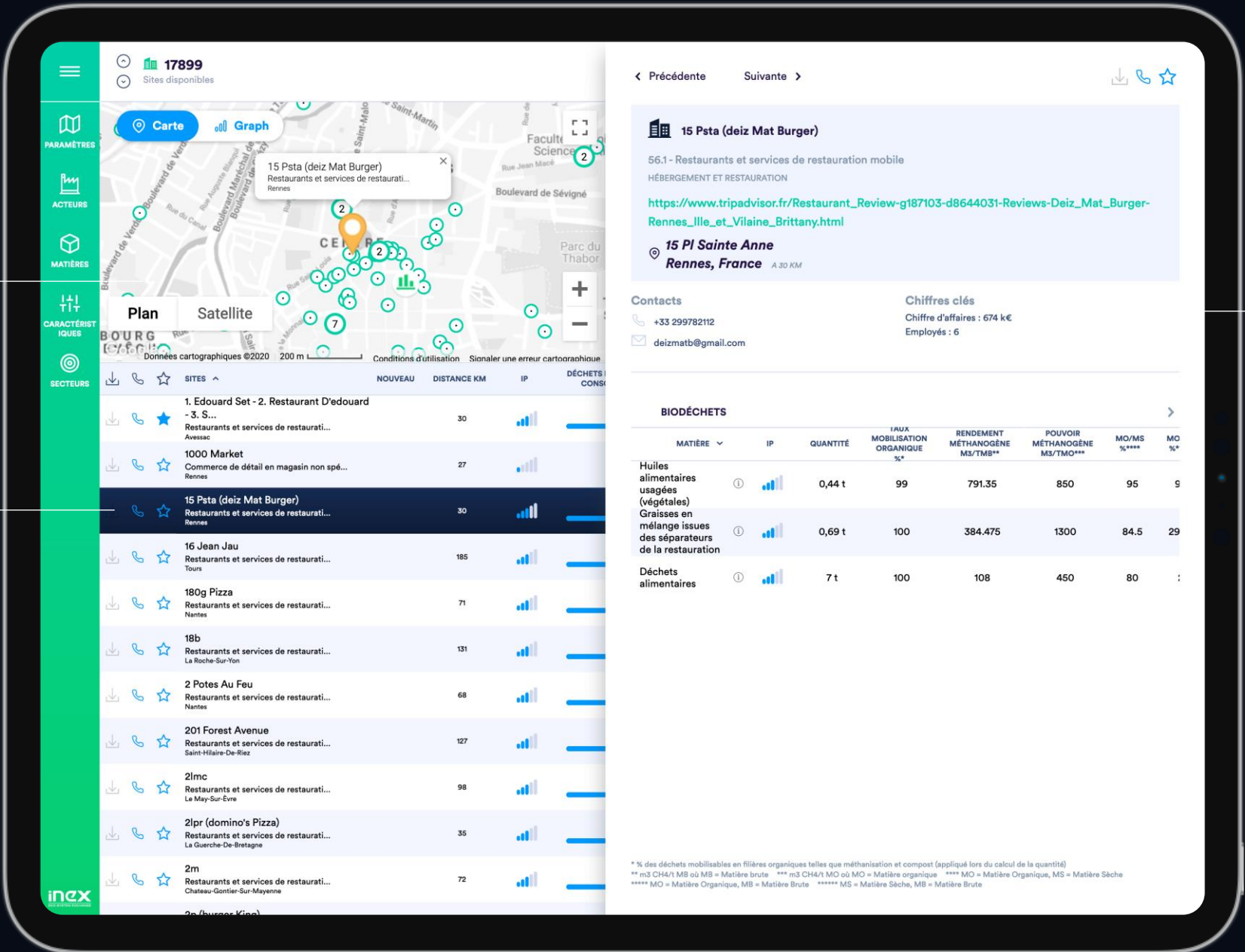
Details by afirms

Nature of the waste: Detailed typology and packaging
Quantities generated in Tons
Indicator of relevance of the predicted data

Geolocate relevant companies

List of firms

Nature of the waste: Detailed typology
Characteristics : rigidity,,
transparency, presence of external
undesirables, presence of
packaging,
Quantities generated in Tons
Indicator of data relevance



Get details for each firms

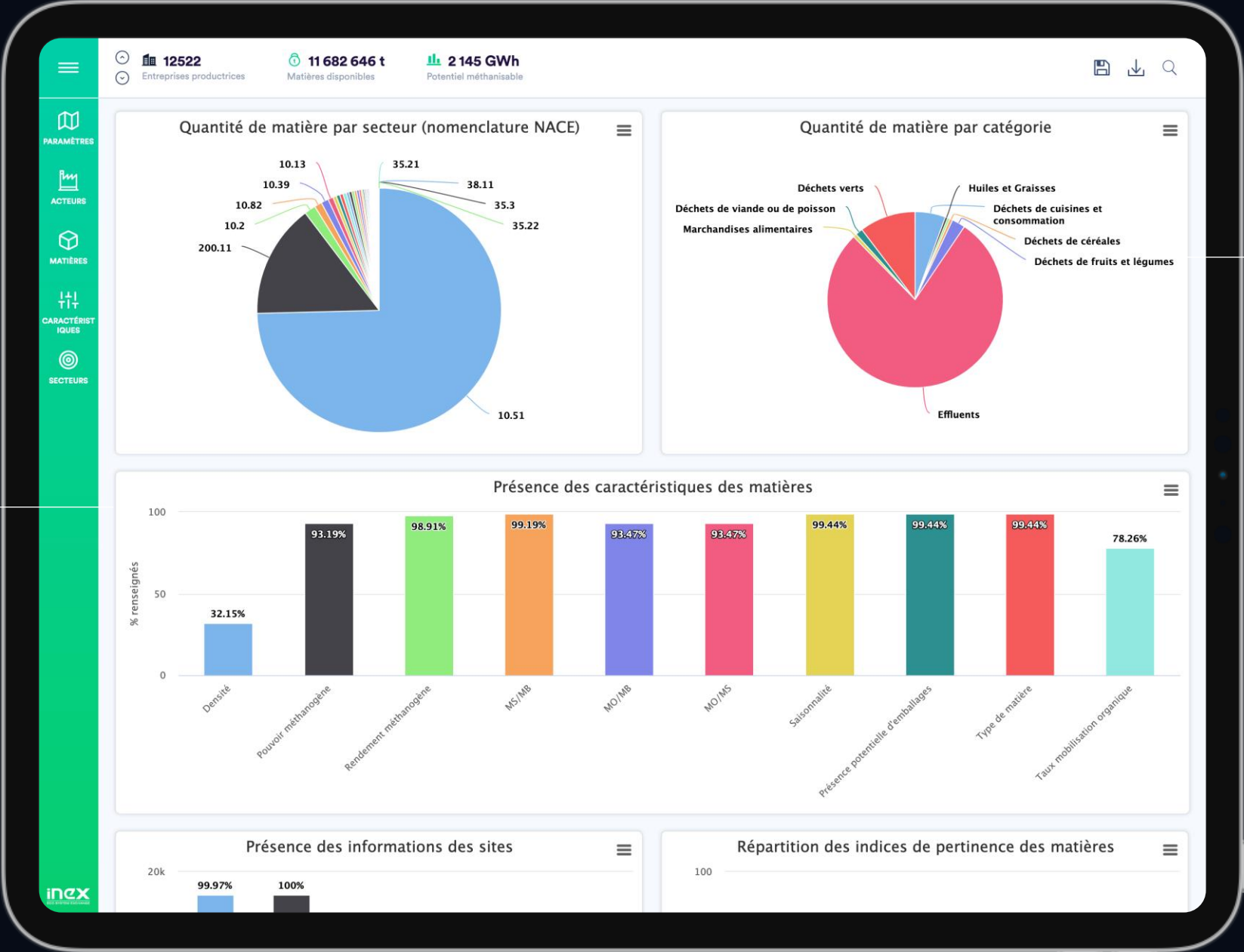
Details for each firm

Company information: Customer name, SIRET, Address, Sector of activity (NACE), Number of employees, Turnover
Contacts : E-mail, Phone number

Get quantitative analysis on the selected area

List of companies in the defined area

Nature of the waste: Detailed typology and packaging
Quantities generated in Tons
Indicator of relevance of the predicted data



Quantitative analyses on the selected area

Company information: Customer name, SIRET, Address, Sector of activity (NACE), Number of employees, Turnover
Contacts : E-mail, Phone number

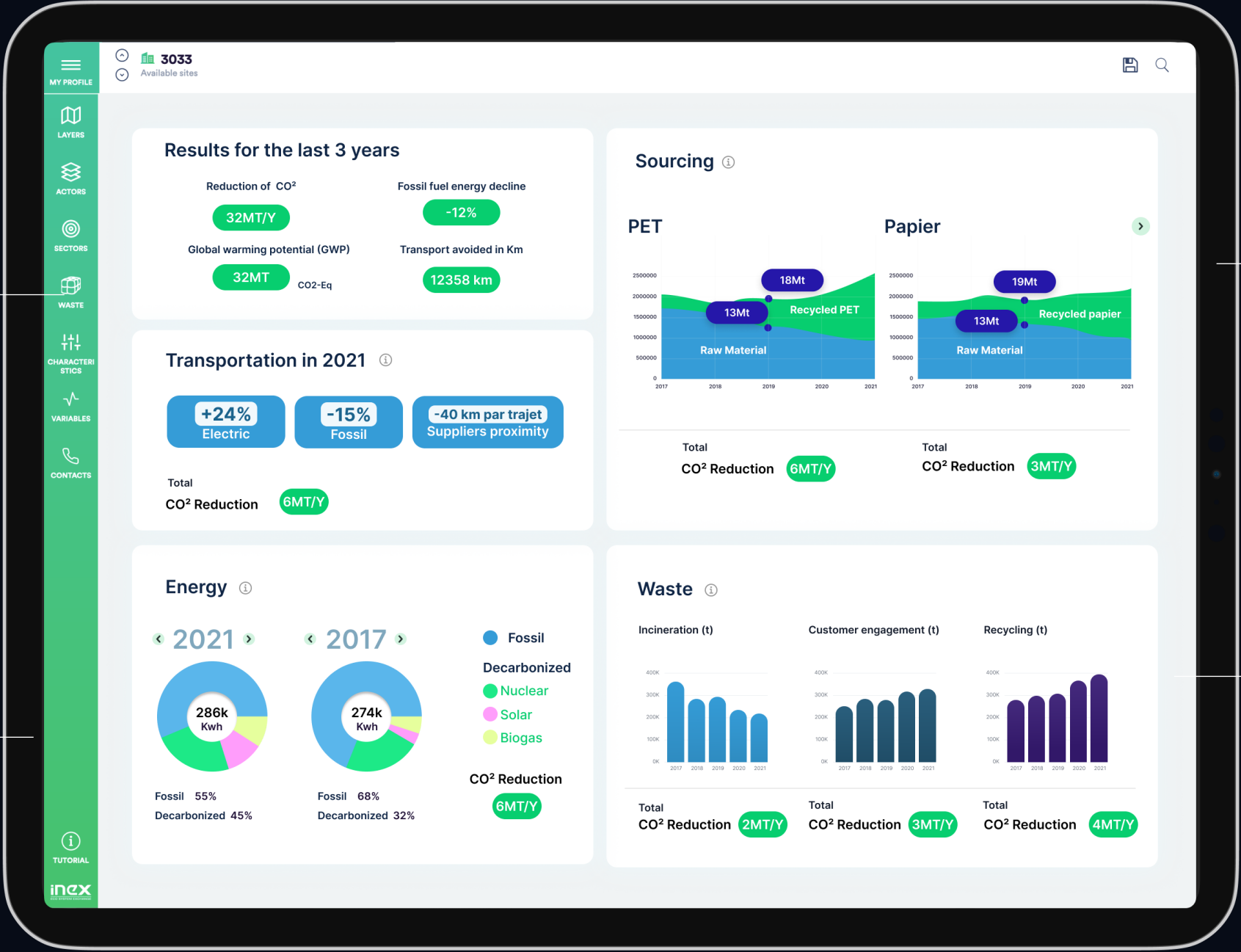
Follow you impact in real-time by connecting your datas

Environmental impact over time

Co2 reduction, transport avoid, fossil fuel decline,

Visualize the environmental impact of your activity

Distribution by type of waste



Details about your sourcing

Details by waste
Incineration, recycling..

Our traceability solution Feedback(k)s





Feedbacks, What is it ?

It's a traceability platform composed of apps and API into a blockchain in order to easily and efficiency track the origin and quality of a material.

Mostly used by industrials and recyclers looking for waste or recycled materials, Feedbacks is an easy tool to implement and customize.



Use case

The plastic

1

Industrialist

The waste producer tags the QR code with his phone. It uses our app or its own information system connected via our API.



2

Transporter

The transporter tags the QR code with his phone. He uses our API and connects his information system to our platform.

Transport orders and regulatory documentation are managed automatically



3

Transformer deconditioner

The deconditioner scans the QR code on the container and receives the information in his information system connected via our API.



It indicates the quantity and quality supplied and takes a photo.

4

Plant of plastic recycling

The recovering unit tags the QR code on the tray with its phone.

Thanks to the **blockchain**, he is 100% sure of the origin and quality of his material.





Sends a validation to the whole previous chain + legal documentation



Sending a penalty to the user concerned + legal documentation

The plastic is sent to an incinerator for burning, so sad !

Next step
a workshop to
understand your
project



Description and goals of the workshop

The workshop is an essential phase of the project:

- **Clarify** the objectives of your project
- **Plan** the priorities,
- **Coordinate** the different internal and external teams,
- **Prepare** the project management between Coca-Cola and iNex

The main objective is to understand the needs of Coca-Cola and in order to prepare the best recycling project.

To achieve this objective, we propose an analysis grid that addresses the main themes in order to answer the 3 key questions:

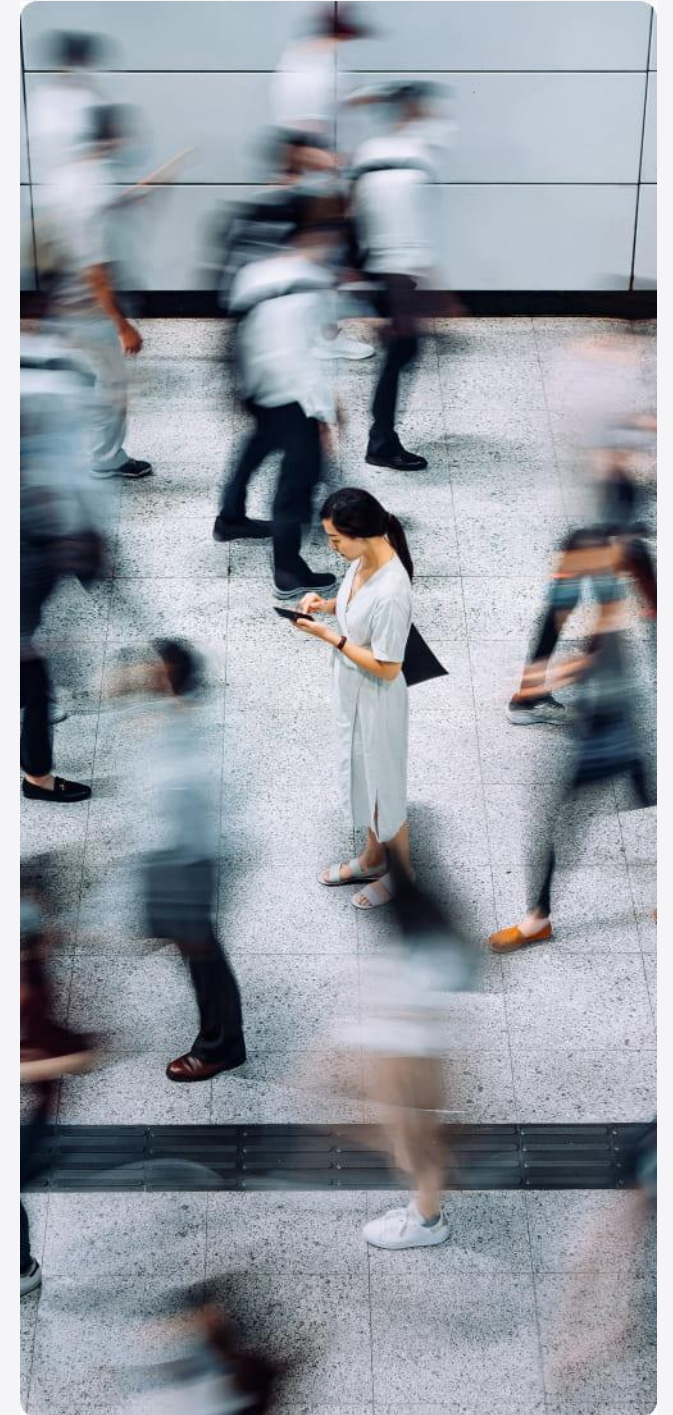
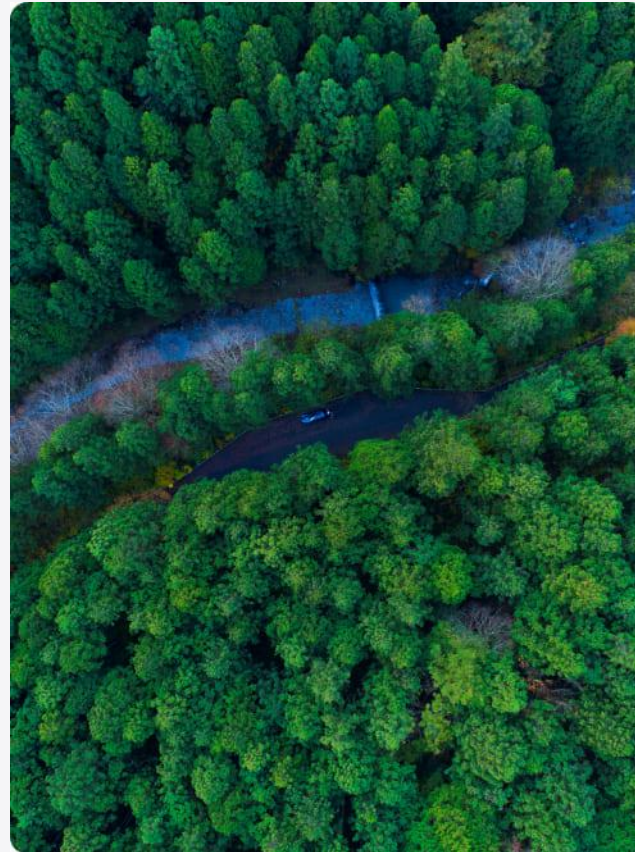
- **What the project is ?**
- **Who is going to work on it ?**
- **How is he going to be done ?**

Let your creativity run free, a 2nd workshop will allow you to specify the data and functionalities you will retain.



Objectives	Employees and professions	Methods of work
What are your objectives in this project ? What are your short, medium and long term objectives ?	Who will work on the project ? Which jobs are concerned ?	How do your employees work today on this project ? Do they use software?
Data	Functionnalités	
Do you have any data you want to implement into the iNex tool? What type of data? What data do you want to find in iNex tools ?	How could our tool help you save more time ? What are your pain points ? Which functionalities may solve them ?	
Expected benefits	Your team	
What benefits do you expect of this project ?	What are the internal resources? Who are our referents?	

Our customers & references



Our clients

Recyclers & Energy specialists



« Since 2021, the tool allows us to be more efficient in the development phases of our projects and in the management of our units as the operation progresses. Coupled with regular support, iNex ensures a quality service that is as close as possible to the needs of our various users. »



Christina Ferreira
TotalEnergies

« My colleagues and I were impressed by the results presented today: the platform is very intuitive and easy to use, and the statistically calculated volume data is realistic.»



Patrick Durand
Veolia

Use cases

CHANEL
PARFUMS BEAUTÉ



France

Implementation of an industrial symbiosis for the recycling of label backings (glassines) with 12 manufacturers

Re_fashion



France

Creation of a platform for the textile professional in order to create an European symbiosis for textile recycling and reuse



France

Transform Soprema as a recycler in order to substitute their raw materials with pet and label waste

For more information or a meeting

Contact-us

Olivier Gambari

06 07 19 44 63
gambari@inex.pro

Pierre Beuret

07 70 00 77 37
beuret@inex.pro





iNex



Artificial intelligence for
efficiency