



MYTILINEOS

SUSTAINABLE ENGINEERING SOLUTIONS BUSINESS UNIT





Contents

About MYTILINEOS	4
SES BU at a Glance	6
Leading through Excellence	8
International Presence	10
Power & Grid Solutions	12
Environmental Solutions	18
New Energy Solutions	20
Infrastructure Projects	22
Our People	26
Our Sustainability Platform	28



MYTILINEOS today is internationally recognized for its unmatched responsiveness and ability to deliver highly demanding projects

About MYTILINEOS

MYTILINEOS is a leading global industrial and energy company with a strong presence in all five continents. The company operates four Business Units, the Power & Gas BU (also known as the retail brand Protergia), the Metallurgy BU (previously known as Aluminium of Greece), the Renewables & Storage Development BU (formerly known as METKA EGN) and the Sustainable Engineering Solutions BU (widely known until recently as METKA).

The company started as a family business in 1908 as a metal trading business and became a corporate entity in 1990. In 1995, the company was listed in the Athens Stock Exchange, while today is a constituent of the FTSE LARGE CAP Index.

In 2017, MYTILINEOS combined its subsidiaries Aluminium of Greece, METKA and Protergia, into a new single business entity, enhancing operational flexibility and further boosting its purchasing and financing capacity. With the corporate transformation of 2020, MYTILINEOS established a new business unit the International Renewables & Storage Development (RSD) Business Unit, while transformed the EPC BU - METKA into a new, modern and innovative Business Unit; the Sustainable Engineering Solutions (SES) BU.

The company's focus on sustainability is strengthened by the subsidiaries EPALME, which is the largest independent producer of recycled aluminum (secondary) and ZEOLGIC, a young technology provider that specializes in innovative solutions for the solid and liquid waste treatment.

MYTILINEOS pursues its development through its business model, responding to the global challenges of Sustainable Development. The company's path to sustainability is characterized mainly by its conscious commitment to responsible entrepreneurship and the alignment of its strategic priorities with the Global Sustainable Development Goals, as well as by its leading role in the evolving national energy transformation and decarbonization.

In 2021, MYTILINEOS became the first Greek company to set solid targets and committed to minimize its carbon footprint. In particular, MYTILINEOS committed to minimize its total direct and indirect CO₂ emissions by at least 30% by 2030, compared to 2019 levels, while by 2050 it committed to achieve net zero emissions in its entire business activity. With this decision, MYTILINEOS paved the way for a greener and more environmentally friendly industry, according to ESG (Environment, Social and Government) performance indices.



SES BU at a glance

OUR BUSINESS SEGMENTS

- Power & Grid Solutions
- Environmental Solutions
- New Energy Solutions
- Infrastructure Projects

OUR STRENGTHS

- Over 50 years track record
- Experience in power generation
- Fast-track project expertise
- Strong international project capacity
- Highly qualified personnel
- Robust financial position
- Strong collaborations
- Reliable partner

OUR PRINCIPLES

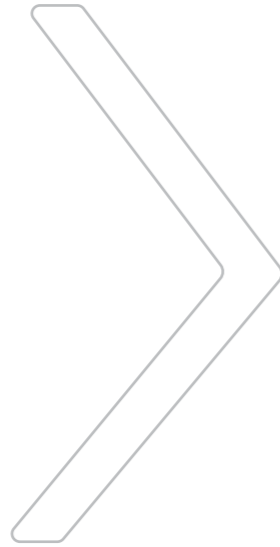
- Business excellence
- Integrity
- Technical leadership
- Safety First
- Transparency
- Sustainability

OUR COMMITMENT TODAY

Today, the Sustainable Engineering Solutions Business Unit (SES BU - formerly known as EPC BU - METKA) of MYTILINEOS focuses on development and implementation of sustainable engineering projects, as well as the construction of thermal power plants and selected infrastructure projects.

We are strongly focused on serving the needs of international markets and carrying out sustainable projects throughout Europe, the Middle East and Africa. We have been continuously developing our know-how, human resources and capacity. Today, leveraging our values and capabilities, we have evolved into a leading international contractor, recognized for its reliability, flexibility and strong execution track-record. In addition to the track-record in successful project execution, we pursue a well-defined development strategy and aims at expanding its business activities into new regional markets with booming energy needs.

As a strategic Business Unit of MYTILINEOS, we are committed to playing a positive role in the broader community, to promote human values and social integration, as well as to follow environmentally responsible practices in all of its business operations.



Leading through Excellence

We carry out highly demanding, complex projects that require strong project management expertise and technical know-how. Leading through excellence is the motto for our performance, thus enabling us to gain the reputation of being a reliable and trustworthy partner.

EXPERTS IN PROJECT EXECUTION

The Sustainable Engineering Solutions (SES) Business Unit, is successful because the entire organization is highly focused on project execution. Excellent project management skills, combined with a wide range of functional expertise in areas such as design engineering, technical procurement, logistics, site construction, quality management, and plant commissioning, enable us to consistently deliver complex and demanding projects to the highest technological standards.

“Leading through Excellence” is our motto for performance, enabling us to gain the reputation of a reliable and trustworthy partner

OUR TEAM IS OUR POWER

We have developed our capabilities through continuous investment in Human Resources across all functions. With nearly 800 skilled employees and approximately 300 highly qualified engineers, we have the full range of technical resources and required experience to undertake the most complex and demanding projects.

ON-TIME AND ON-BUDGET

Our excellent track-record in delivering projects on-time and on-budget, has enabled our sustained, profitable growth over the past 20 years. As a strategic Business Unit of MYTILINEOS, we have both the financial strength and stability which are critical to the viability of major international investments.

CAPACITY AND FLEXIBILITY

We have the critical mass to successfully manage major projects, whilst maintaining the essential flexibility to respond quickly and effectively to unexpected events, as well as a proven capacity to execute multiple projects simultaneously with world class performance.

RELIABLE PARTNER

As a leading international contractor of turn-key and manufacturing projects, with an experience of over 50 years, we are a reliable partner for major international projects. Above all, MYTILINEOS values the trust placed in it by its partners and recognizes that the reputation of the group is built on its integrity and the ability to reliably deliver complex projects for the long-term benefit of the customers and communities served.



International Presence

GREECE

- Headquarters
- 2 industrial facilities
- 826 MW CCGT natural gas fired power plant owned by MYTILINEOS (under construction)

ALBANIA

- 400kV "Elbasan 3" substation

ALGERIA

- Representation office
- 38 mobile gas turbine units, 775 MW total
- 368 MW & 590 MW Open Cycle Power Plant in Hassi Rmel

GEORGIA

- 2 new 220/110kV substations

GHANA

- Representation office
- 10 mobile gas turbine units, 250 MW total
- 192 MW Combined Cycle Power Plant, both in Takoradi
- 200 MW LPG Power Plant in Tema

IRAQ

- 1,250 MW Open Cycle Power Plant in Basra

JORDAN

- 146 MW Fast-Track Simple Cycle Combustion Turbine Power Plant
- 143 MW Combined Cycle Power Plant, both in Zarqa

LIBYA

- 650MW dual fuel plant in Tobruk
- Branch office in Benghazi & Tripoli

NIGERIA

- Representation office
- 8 mobile gas turbine units, 240 MW total
- Off-Grid Hybrid Power Fast-Track Project 7.5 MW total, part of the Energizing Education Program aiming to provide uninterrupted power to universities and hospitals across the country

PAKISTAN

- 220 MW Combined Cycle Power Plant in Karachi

-ROMANIA

- 860 MW Combined Cycle Power Plant in Ploiesti

SAUDI ARABIA

- Representation office

SLOVENIA

- Representation office
- 110MW Combined Heat & Power Plant in Ljubljana

TURKEY

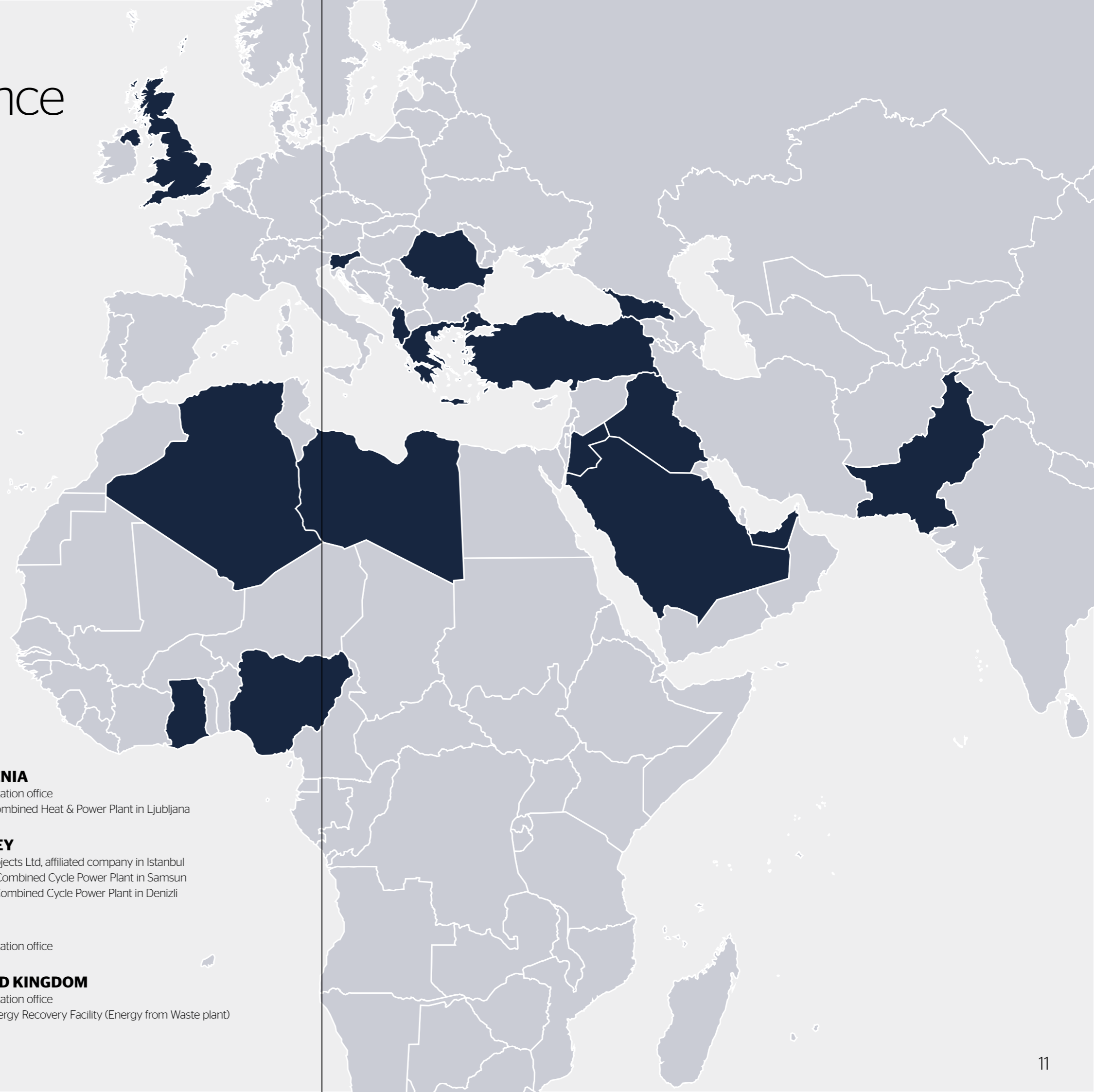
- Power Projects Ltd, affiliated company in Istanbul
- 870 MW Combined Cycle Power Plant in Samsun
- 775 MW Combined Cycle Power Plant in Denizli

U.A.E.

- Representation office

UNITED KINGDOM

- Representation office
- Protos Energy Recovery Facility (Energy from Waste plant)



Power & Grid Solutions

The Power & Grid Solutions segment traditionally focuses on the turn-key construction of natural gas-fired thermal power plants, the implementation of electrical substation projects (T&D projects) and Oil & Gas projects, capitalising on its more than 50 years of experience in this sector, during which it implemented more than 14,000 MW of projects globally.

POWER PLANTS

In the power generation field, we have extensive references and a strong record of successfully delivering major plant projects, often on very demanding fast-track project schedules, to support governments, local communities and industrial customers around the world.

Our customers range from state-owned utilities to independent power plant developers mainly throughout Europe, the Middle East and Africa.

In all cases, MYTILINEOS's objective is to provide the optimal solution for the specific requirements and project needs. Today, MYTILINEOS is already established as one of the largest EPC contractors in the world.

We offer the complete range of services in project management, engineering, procurement, construction and plant commissioning.

With over 50 years' experience in the sector, recognized for its reliability, flexibility and strong execution track-record, MYTILINEOS delivers complete power generation plants on turn-key basis, using different types of power generation equipment, to support the needs of power utilities.

Combined Cycle Power Plant, Brazi

Design/engineering, supply, erection and commissioning of a **860 MW** combined cycle power plant, in 2+2+1 configuration, natural gas fired, with auxiliary installations and required interconnections inside the refinery.
Romania



TRANSMISSION & DISTRIBUTION

Within the electricity transmission sector, our electrical substations solutions cover the full range of operating voltages, from medium to ultra-high voltage levels, as well as transmission grid supporting technologies such as: power regulation or step-down auto/transformers, phase shift transformers, reactor strings, capacitor banks and static VAR compensators.

With more than 50 years of experience, we are a reliable partner for transmission network owners, system operators and local communities around the world.

We provide complete turn-key solutions for all types of electrical substations, including Gas Insulated Substations (GIS) type, Air Insulated Substations (AIS) type, as well as Hybrids and Mobile configurations. In addition, we provide full turn-key construction of medium, high and extra high voltage transmission lines.

Air Insulated Substation (AIS), Denizli CCPP

Air Insulated Substation (AIS), consisting of 7 DBB with bypass BB bays 380 kV, which interconnect the relevant plant with 3 consumer substations, at Denizli 775 MW CCPP.
Turkey



Power & Grid Solutions

OIL & GAS AND INDUSTRIAL PROJECTS

Building on our strong track record and references in relevant projects, as well as our high technical/executional capability, we focus primarily on 2 types of projects:

- Natural gas infrastructure projects (e.g. LNG terminals, FSRUs, distribution pipelines and compression stations)
- Industrial plants such as aluminum, cement, desalination, and ammonia plants

OPERATIONS & MAINTENANCE

Building on its technical and organizational expertise and the significant operational experience acquired on the MYTILINEOS power plants in Greece, the Sustainable Engineering Solution Business Unit offers a complete range of Operations & Maintenance (O&M) services to power plant owners. We have experience in setting up full scope O&M organizations to ensure safe and efficient operations, and effective management of both planned and unplanned maintenance activities.

Mobile Gas Turbine Power Generating Sets, Algeria

Engineering, procurement, installation and commissioning of 38 mobile gas turbine power generating sets including trailer mounted balance of plant equipment, 775 MW in total, installed at 8 different sites.
Algeria



FAST-TRACK EXECUTION

We have extensive references and a strong record of successfully delivering major plant projects, often on very demanding fast-track project schedules, to support governments, local communities and industrial customers across several countries.

Using state-of-the-art technology, we provide a broad range of complete, specialized and cost effective, fast-track power solutions. Our customized, fast-track power solutions encompass both mobile/temporary and permanent options, in order to serve the different power needs in the most efficient way:

- Experience in permanent installations
- Experience in smaller mobile units

Fast-Track Execution

We provide a broad range of complete, specialized and cost effective fast-track power solutions



Samra Fast-Track Simple Cycle Project, Zarqa

Engineering, procurement, construction and commissioning of a simple cycle power plant in Zarqa, with output of 146 MW at site conditions, completed in the record time of 8 months.
Jordan



Power & Grid Solutions

Selected Reference Projects



Aluminium of Greece, Co-Generation Power Plant
Design/engineering, supply, erection and commissioning of a **334 MW** Co-Generation Power Plant.
Greece

Korinthos Power S.A., Combined Cycle Plant
Engineering, procurement, construction and commissioning of a **437 MW** combined cycle gas turbine natural gas fired power plant.
Greece



Combined Cycle Power Plant, Samsun
Engineering, procurement and construction of a natural gas fired power plant, of **870 MW** consisting of 2 combined cycle units.
Turkey



Combined Cycle Power Plant, Takoradi
Engineering, procurement, construction and commissioning of a **192 MW**, with the capability to operate on both natural gas and light crude oil.
Ghana



Ag. Nikolaos IPP II, Combined Cycle Power Plant
Engineering, procurement, construction and commissioning of a **826 MW** power plant in combined cycle (CCGT) configuration, operated by a GE H-Class gas turbine with a thermal efficiency of more than 63%, rendering the CCGT plant as the most efficient across Europe.
Greece

High-Voltage Substation (GIS) 400/150 KV, Aliveri
Design, supply of equipment and installation of one high voltage gas insulated substation (GIS) of **400/150 KV**.
Greece



Combined Cycle Power Plant, Denizli
Turn-key engineering, procurement and construction for a state-of-the-art natural gas fired combined cycle power plant, with a net power output of **775 MW**.
Turkey



Power Plant of 200MW, Tema
Engineering, procurement, construction and commissioning of a **200 MW** power project in combined cycle (CCGT) configuration.
Ghana

Environmental Solutions

Selected Reference Projects

We offer high-quality innovative environmental solutions and EPC services worldwide for water, liquid and solid waste. MYTILINEOS is recognized as an environmental pioneer in the circular economy. We have a strategic interest in the international environmental business sector for liquid and solid waste treatment, combining EPC and technology provider capabilities. Through the subsidiary ZEOLIGIC, we have developed a series of competitive patented solutions based on nanotechnology which effectively address a wide variety of water, sludge, and liquid waste issues.

WATER, LIQUID WASTE TREATMENT & SLUDGE TREATMENT AND UTILIZATION

MYTILINEOS provides unique technologies and suitable treatment solutions over a wide range of wastewater and liquid waste projects. Our subsidiary ZEOLIGIC, has developed a series of innovative products to support its patented solutions such as: nanocoagulant mediums, nanoflocculants, organoflocculant compounds and metallic oxidation nanoparticles. These enhance significantly the plant treatment's performance and overall efficiency. The solutions provided are suitable for urban, industrial and agricultural waste, including the construction of new facilities or the upgrade and optimization of existing ones. The portfolio includes applications such as: Municipal Wastewater Treatment, Industrial & Hazardous Wastewater Treatment, Ship-Generated Liquid Waste Treatment (slops, ballast water, bilge water), Potable Water Plants, Heavily Contaminated Sludge Treatment, Air Pollutants Control residues Treatment, Landfill Leachate Treatment and Environmental Restoration.

SOLID WASTE TREATMENT AND UTILIZATION

Regarding Solid Waste Treatment & Utilisation our focus is primarily set on the following:

- Energy Recovery Facilities (ERF) from:
 - Municipal Solid Waste (MSW)
 - C&I Waste
 - RDF / SRF
 - Biomass
- Wet and Dry Anaerobic Digestion (AD) applications
- Landfill Gas (LFG) applications
 - Sorting and Mechanical-Biological Treatment (MBT) facilities of MSW.

We provide innovative and competitive environmental solutions worldwide for water, liquid and solid waste.



Protos Energy Recovery Facility Project

The plant is located in Cheshire, United Kingdom, and has a total annual capacity of 400,000 tonnes p.a. of non-recyclable waste with net power output of approx. 45 MW. 2 lines plant, with a common water-steam cycle, of waste-deriving energy recovery with annual capacity of 200,000 tons each. The Protos ERF Project will be processing 2 types of waste, Residual fraction of Municipal Solid Waste (MSW) and Commercial & Industrial (C&I) Waste. MYTILINEOS is the consortium leader of MYTILINEOS S.A. - Standardkessel Baumgarte GmbH, as well as the Principal Designer and Principal Contractor of the project.

United Kingdom



Liquid Waste and Potable Water Treatment Modularized Units with Zeologic technology.
Greece



Wastewater Treatment Plant (WWTP) for the food processing industry (fruits and vegetables) with Zeologic technology.
Greece

New Energy Solutions

We focus on the national and global goal of energy transition through the dynamic development of sustainability projects and the implementation of new technologies.



From energy efficiency programs to energy systems that minimize carbon fuel consumption, from combining energy and information technology into smart energy solutions and from introducing hydrogen and fuel cells into the new energy mix for power generation and transportation, we are already well positioned to make a significant headway in decarbonizing the energy system.

Furthermore, we are fully dedicated to the European Green Deal which provides a roadmap with actions to boost the efficient use of resources by moving to a clean, circular economy, as well as an official member of the Hydrogen Europe Alliance.

HYBRID / OFF-GRID SYSTEMS

We identify and develop customized solutions to meet the challenges of the rapidly growing hybrid and off-grid power markets. Combining the usage of traditional and renewable energy sources with energy storage systems, controlled and managed by intelligent power conversion technology, We deliver reliable power to individuals, communities and industries which are not supported by the grid or aim to minimize their dependency on carbon fuels, particularly diesel oil.

We design and implement projects of the highest quality around the globe, using a vast network of global partnerships and local manufacturers/contractors, whilst offering a diversified portfolio of solutions, serving a wide range of customers and industries, such as: oil & gas remote power systems, isolated islands, telecom towers, off-grid communities, industrial facilities and/or residential units.

ENERGY EFFICIENCY & SMART ENERGY SOLUTIONS

We are active in the development, installation and integrated construction of energy efficiency projects. Being one of the largest Energy Services Companies (ESCOs) in Greece, our portfolio of services ranges from street lighting rehabilitation and O&M for municipalities and districts to energy efficiency projects in public and private buildings, to net metering and virtual net-metering solutions for large customers (above 0.5MW), actively participating in protecting the environment by producing "cleaner" electricity and lowering CO2 emissions.

We are committed to providing solutions that promote the efficient use of energy coupled with the latest developments in information technology. These smart energy solutions can be applied in various business segments throughout the complete value chain, from efficient production of electricity to smart metering systems, and from micro-grid applications to the complete portfolio of smart city solutions.

POWER TO X

Power-to-X is a number of electricity conversion, energy storage, and reconversion pathways that use surplus electric power, typically during periods where fluctuating renewable energy generation exceeds load. Power-to-X conversion technologies allow for the decoupling of power from the electricity sector for use in other sectors (such as transport or chemicals etc).

Utilizing our vast experience in the power sector, including conventional fuel and renewables power generation, while investing in Power-to-X conversion technologies, thus being one of the pioneers in creating a new, greener chain of electricity production and usage.

Selected Reference Projects



Nigerian Universities off-grid hybrid power plants

Off-Grid Hybrid Power Project of 7.5 MW for the electrification of four Nigerian universities. Each system is composed of a PV park, batteries, power management equipment, diesel generating set, upgrade of existing distribution network, rehabilitation & provision of street lighting, as well as a building to be used as a training centre in each University.

Nigeria



Street Lighting Project, Municipality of Volos

Energy upgrade of public areas in the Greek municipality of Volos, with state-of-the-art lighting solutions. Conventional street lights (short life cycle, erratic luminosity and highly energy consuming), will be replaced by a higher quality lighting system, with improved visible luminous efficacy and a better ambiance in the urban environment. Energy savings up to 55% are estimated, reducing the electricity cost and the Municipality's energy footprint

Greece

Infrastructure Projects

The solid financial position, along with strategic partnerships with key international players, enable MYTILINEOS to pursue its development strategy and expand further its business activities within the infrastructure sector to undertake large-scale complex infrastructure projects.

The main activities of the Sustainable Engineering Solutions (SES) Business Unit in the infrastructure segment, in Greece and abroad, are the following:

- Bridge & Road Construction
- Railway Projects
- Certified Buildings
- Marine Works
- Private Concessions

With our accumulated experience and know-how and the continuous focus on high-technology products and applications, we are a consistent and reliable partner for the project management and execution of specialised infrastructure projects, according to the stringent international standards. We are also classified in the highest category of construction

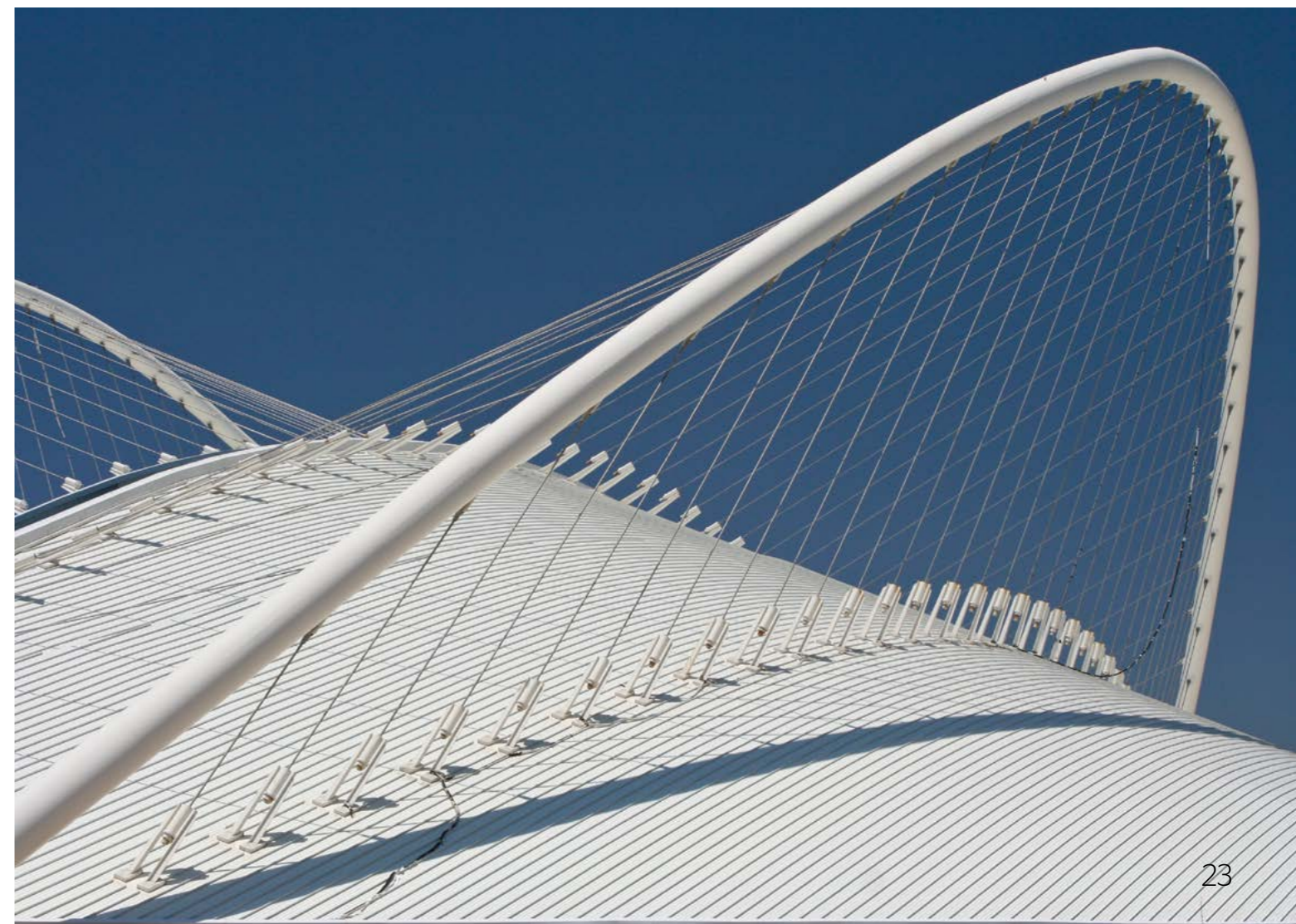
contractors for major public works projects in Greece (including Electromechanical, Industrial, Energy, Civil Engineering, Road Construction, Marine Works, etc.).

In 2020 MYTILINEOS completed the High-speed Railway project "Kiato - Rododafni" in Greece. The scope of the project refers to the construction of remaining infrastructure, permanent way, signaling-telecommanding, telecommunications and electrical engineering works for the tunnel facilities for the new railway line Kiato-Rododafni, which connects the Peloponnese with the modern railway network of Athens.

We have also successfully completed highly demanding projects, such as the construction of the steel roof structure of the Olympic Velodrome, at the main athletics complex of the Athens 2004 Olympic Games, designed by the renowned architect Santiago Calatrava.



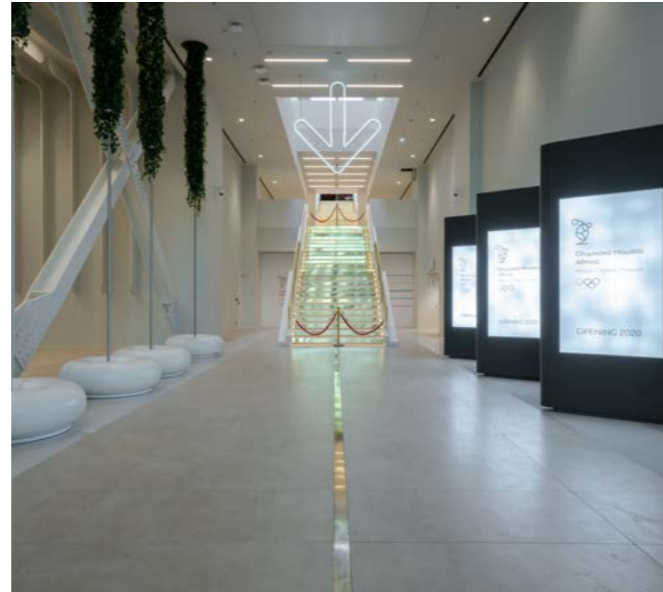
We are a consistent and reliable partner for the project management and execution of specialised infrastructure projects.



Infrastructure Projects



LEED Platinum Certified Building in Athens
Construction of a multi-storey, 21,000 m², LEED Platinum Certified Office Complex in Athens.
Greece



Golden Hall Extension
Architectural and electromechanical works for the extension of the prestigious Golden Hall shopping center in Athens.
Greece



Kiato-Rododafni Railway Line
Completion of a 71 km long new double-track high speed railway line, including signalling, telecommanding and telecommunications, from Kiato to Rododafni.
Greece



Aktio-Amvrakia Motorway
Scope involves constructing 32 km of the new motorway connecting Aktio with Ionia Odos.
Greece. Currently in progress.

Selected Reference Projects



Olympos Naousa Hotel
Renovation and extension of a historical and listed building, transforming it into a 5* Hotel, in Thessaloniki.
Greece. Currently in progress.



Rio-Antirrio Bridge Steel Works
Scope involved the delivery of the head steel structures of the pylons of the impressive suspension Rion-Antirrio Bridge.
Greece



Accommodation Camps
Construction of accommodation facilities (3 camps), including all necessary infrastructure, accommodation and auxiliary buildings, at the islands of Samos, Kos and Leros.
Greece



Amandi CCPP Marine Works
Installation of one HDPE outfall pipeline DN280 of 350m, construction of a plumping wells system of 150m and construction of a 600m anti-scour protection in the sea front, using 50,000m³ of stone material.
Ghana

Our People

HUMAN RESOURCES

MYTILINEOS safeguards equality, irrespective of nationality, gender or religion, with zero tolerance to discrimination. In addition, as one of Greece's largest Heavy Industry Companies, MYTILINEOS provides more than 3,850 direct and indirect jobs, creating a work environment characterised by job security, equality, stability and employee commitment to the corporate values.

The Human Resources of the Company comprise highly skilled and trained people active in various sectors and disciplines. In MYTILINEOS we seek to treat our people in a responsible and consistent manner and to remain their first choice of employer throughout the course of their careers. We are standing by our people and we take concrete steps to support their professional development.

Corporate Culture

The corporate culture of MYTILINEOS is the element that ensures cohesion and consensus in the efforts to realize the Company's vision, and is present across all the levels of the workforce – from the top management down to the production line.

The core priority of the corporate culture is to invest constantly in the human capital, which is the Company's driving force.

To this end:

- We focus on attracting and retaining competent professionals, whose values and principles are aligned with those of the Company
- We put to good use the potential of our people and we seek to provide them with tools and opportunities to help them develop their skills and support their professional development within the Company
- We encourage innovation, initiative, learning and diversity
- We recognise the importance that maintaining a balance between professional and personal life has for our employees
- We keep in place a set of corporate values that promote business excellence and social responsibility

HEALTH & SAFETY

The Sustainable Engineering Solutions Business Unit (SES BU) is strongly committed to ensuring the Health and Safety of its employees, external collaborators and of visitors to its facilities and sites, through full compliance with the applicable European and international regulations.

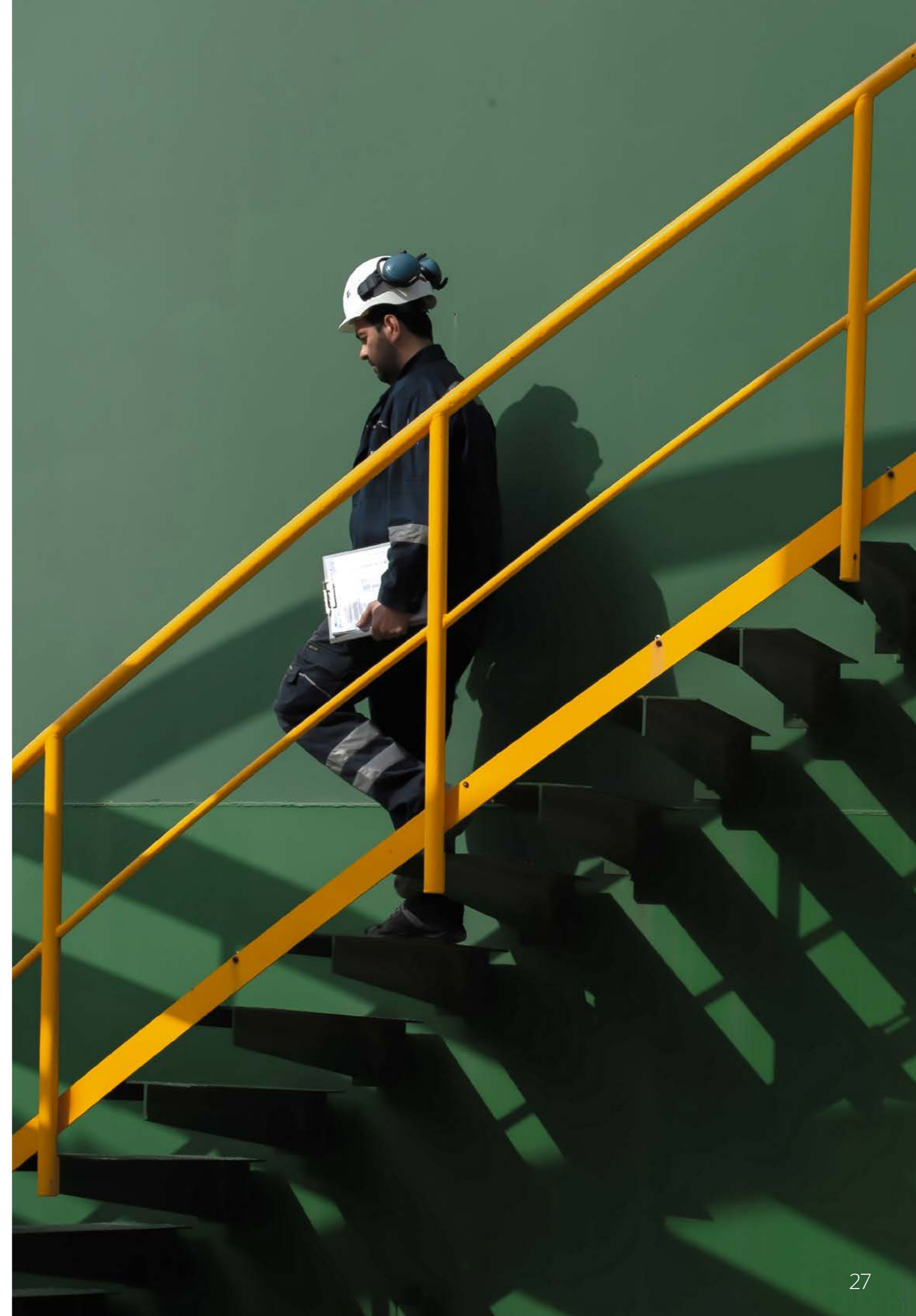
Our Occupational Health & Safety Management System has been certified since 2005, in accordance with the OHSAS 18001 International Standard and recently with the new ISO 45001 standard which sets the framework for the systematic identification, assessment and management of risks for health and safety at workplaces for improving the safety and health of both employees and others; thus, contributing to the minimization of accident possibilities. Moreover, the certification requires the compliance with the relevant legislation and helps in the overall optimization of corporate performance.

Anywhere we operate, this policy seeks to:

- prevent workplace injuries
- improve the working conditions and well-being at work

Moreover, we invest systematically in the implementation of modern, up-to-date methods for identifying, assessing, preventing and eliminating potential hazards at work, giving particular emphasis to Workplace Health & Safety issues, reflecting a desire to achieve outstanding performance and meet the target of "ZERO WORKPLACE INJURIES".

MYTILINEOS invests systematically in the implementation of modern, up-to-date methods for identifying, assessing, preventing and eliminating hazards.



Our Sustainability Platform

MYTILINEOS pursues Business Excellence with a sense of responsibility towards society, the environment and people creating value for customers, business partners and shareholders



SUSTAINABLE DEVELOPMENT STRATEGY

Sustainable Development is a high priority for MYTILINEOS and a key factor of the company's strategy and organization, facing current challenges and contributing to an efficient development model without social exclusions. MYTILINEOS strategy is governed by specific Principles and aims at the creation of long-term and sustainable value for all Social Partners, through three basic stages, combining financial stability with social and environmental sustainability.

ESG APPROACH

MYTILINEOS amplifies its ability to create long-term value and handle the significant changes in the environment that operates through ESG approach. The company responds not only to the modern sustainability requirements of investment community, capital markets and financial organizations, but also to the expectations of society for commitment and transparency regarding those issues, that progressively are increasing. The company's target is the amplification of its corporate value assessment, the effective management of ESG risks and opportunities and the complete incorporation of ESG criteria in its strategic decisions.

CLIMATE CHANGE

Climate change is one of the most pressing issues planet is facing, for the next decade, and also a key element for the sustainability of the company's activities in total, equally in the production processes of aluminum and electricity. In this context, MYTILINEOS is the first Greek company that sets clear and ambitious goals while is committed to eradicate its carbon footprint by 2050, by designing a timely strategy to tackle climate change. The company lays the foundation for a 100% sustainable and green industrial activity, with a 30% reduction in emissions throughout its business by 2030 and with a carbon neutral footprint by 2050, contributing substantially to tackling the phenomenon of climate change.

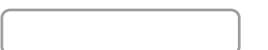
CORPORATE SOCIAL RESPONSIBILITY

Corporate Social Responsibility for MYTILINEOS is a continuous process of self-improvement and constant learning while it also functions as a key mechanism for renewing its "social" operating license, while improving its competitiveness in national and international level. The company operates responsibly through its Corporate Social Responsibility and its commitment to the 10 Principles of the UN Global Compact and has oriented its strategy to the 17 Global Sustainable Development Goals (Agenda 2030), expressing in this way its commitment to contribute to their implementation.

SUSTAINABLE DEVELOPMENT STRATEGY OF THE SES BU

The Sustainable Engineering Solutions Business Unit of MYTILINEOS combines all its forces at the service of Sustainable Development. Specifically:

- Transforms the Integrated Projects and Infrastructure Sector into a new, modern and innovative Business Sector, called the "Sustainable Engineering Solutions-SES BU.
- Sets a target for NetZero carbon footprint by 2050.
- Commits to achieving the only acceptable goal about "No Accident and Occupational Disease".
- Implements the new Corporate Policy for the Protection of Human Rights in its daily practices.





Contact Details

GREECE

CORPORATE HEADQUARTERS

8 Artemidos Str. 15125 Maroussi
Athens Greece
T: +30 210 270 9200
F: +30 210 275 9528
E: info@mytilineos.gr

ALGERIA

MYTILINEOS ALGERIA BRANCH

06, Bis Rue Amar Mahasri
Hydra - Alger, Algérie
T: +213 2160 5209
F: +213 2348 4466
E: info@mytilineos.gr

GHANA

MYTILINEOS GHANA BRANCH

Plot 139 Labone
Ring Road Extension North
Accra, Ghana, West Africa
T: +233 (0) 302 772587
E: info@mytilineos.gr

LIBYA

METKA INTERNATIONAL LTD.

5th Floor, Office No 6, Burj Al Naaman,
Aliastiqlal Street, Al-Berka
Benghazi, Libya
T: +21 891 218 2487
M: +21 891 897 2548
E: info@mytilineos.gr

NIGERIA

METKA POWER WEST AFRICA LTD.

6th Floor, The King's Court
3 Keystone Bank Crescent
Victoria Island, Lagos, Nigeria
T: +234 708 329 8129
M: +234 802 778 5338
E: info@mytilineos.gr

SAUDI ARABIA

MYTILINEOS KSA BRANCH

King Faisal Rd, Al Bandariyah,
Building no. 6528, Tower A, Office no. 304
Al Khobar 34423, Saudi Arabia
M: +966 507 658 888
E: info@mytilineos.gr

SLOVENIA

MYTILINEOS SLOVENIA BRANCH

Toplarniska Ulica 19
1000 Ljubljana, Slovenia
T: +30 210 2709 343
M: +38 669 931 688
E: info@mytilineos.gr

TURKEY

POWER PROJECTS LTD.

Visnezade Mah. Süleyman Seba Cd.
No: 44 B1 Blok D: 9
34357 Besiktas-Akaretler, Istanbul
T: +90 212 381 8100
F: +90 212 327 4256
E: info@powerprojects.com.tr
www.powerprojects.com.tr

U.A.E.

METKA INTERNATIONAL FZE

Sheikh Rashid Tower, Office no. 126
Dubai World Trade Center
9292 Dubai, U.A.E.
E: info@mytilineos.gr

UNITED KINGDOM

MYTILINEOS UK BRANCH

361-373 City Road,
EC1V 1LR, London, UK
T: +44 7754 241 155
E: info@mytilineos.gr



MYTILINEOS

SUSTAINABLE ENGINEERING SOLUTIONS BUSINESS UNIT